



Somatic genetic aberrations in gallbladder cancer: comparison between Chinese and US patients

Pingzhou Yang¹, Milind Javle², Fei Pang³, Wei Zhao⁴, Reham Abdel-Wahab^{2,5}, Xiaofeng Chen⁶, Funda Meric-Bernstam⁷, Huanwei Chen⁸, Mitesh J. Borad⁹, Yu Liu¹⁰, Chuntao Zou³, Shuo Mu³, Yutong Xing³, Kai Wang³, Chuang Peng¹, Xu Che¹¹

¹Department of Hepatobiliary Surgery/Hunan Research Center of Biliary Disease, Hunan Provincial People's Hospital/The First Affiliated Hospital of Hunan Normal University, Changsha 410005, China; ²Department of Gastrointestinal Medical Oncology, The University of Texas MD Anderson Cancer Center, Houston, TX, USA; ³OrigiMed Inc., Shanghai 201114, China; ⁴Department of Hepatobiliary Surgery, The Affiliated Hospital of Qingdao University, Qingdao 266024, China; ⁵Department of Clinical Oncology, Assiut University Hospitals, Assiut, Egypt; ⁶Department of Oncology, The Affiliated Hospital of Nanjing Medical University, Nanjing 210000, China; ⁷Investigational Cancer Therapeutics, The University of Texas MD Anderson Cancer Center, Houston, TX, USA; ⁸Department of Liver surgery, First People's Hospital of Foshan, Foshan 528314, China; ⁹Division of Hematology and Oncology, Mayo Clinic, Scottsdale, AZ, USA; ¹⁰Department of Pathology, People's Hospital of Hunan Province, Changsha 410005, China; ¹¹National Cancer Center/National Clinical Research Center for Cancer/Department of Pancreatic and Gastric Surgery, Cancer Hospital, Chinese Academy of Medical Sciences and Peking Union Medical College/National Cancer Center/National Clinical Research Center for Cancer/Department of Hepatobiliary and Pancreatic Surgery, Cancer Hospital & Shenzhen Hospital, Chinese Academy of Medical Sciences and Peking Union Medical College, Shenzhen 518116, China

Contributions: (I) Conception and design: P Yang, C Peng, X Che; (II) Administrative support: None; (III) Provision of study materials or patients: C Peng, P Yang; (IV) Collection and assembly of data: M Javle, F Pang, R Abdel-Wahab; (V) Data analysis and interpretation: M Javle, F Pang, R Abdel-Wahab, X Chen, F Meric-Bernstam, MJ Borad, Y Liu, S Mu, Y Xing, K Wang; (VI) Manuscript writing: All authors; (VII) Final approval of manuscript: All authors.

Correspondence to: Chuang Peng. Department of Hepatobiliary Surgery/Hunan Research Center of Biliary Disease, Hunan Provincial People's Hospital/The First Affiliated Hospital of Hunan Normal University, No. 61, Jiefang Avenue West, Changsha, Changsha 410005, China. Email: pengchuangen@163.com; Xu Che. Department of Hepatobiliary and Pancreatic Surgery, Cancer Hospital & Shenzhen Hospital, Chinese Academy of Medical Sciences and Peking Union Medical College, Shenzhen, No. 113 Baohe Avenue, Longgang District, Shenzhen 518116, China. Email: dr.chex@hotmail.com.

Background: Gallbladder cancer (GBC) is often diagnosed at an advanced stage with limited therapeutic options and poor prognosis. The five-year survival rate of this cancer when diagnosed at an advanced stage is below 5%, and the median survival time is less than a year with standard gemcitabine-based chemotherapy. Survival benefit with second-line treatment is unknown. Thus, there is an urgent need for novel treatment strategies and targeted therapy based on next generation sequencing (NGS) may be of value.

Methods: Comprehensive genomic profiling (CGP) was performed with NGS panel on paraffin-embedded tumors from a cohort of 108 Chinese and 107 US GBC patients. Clinical data were collected using an IRB approved protocol from a single-center in US and from China.

Results: In Chinese and US GBC cohorts, an average of 6.4 vs. 3.8 genomic alterations (GAs) were identified per patient. The most frequent alterations were *TP53* (69.4%), *CDKN2A/B* (26%), *ERBB2* (18.5%), *PIK3CA* (17%) and *CCNE1* (13%) in Chinese cohort, *TP53* (57.9%), *CDKN2A/B* (25%), *SMAD4* (17%), *ARID1A* (14%), *PIK3CA* (14%) and *ERBB2* (13.1%) in US patients. *NFE2L2* mutations were present in 6.5% of Chinese patients and not observed in the US cohort. Interestingly, *ERBB2* genetic aberrations were significantly associated with better pathological tumor differentiation and tended to co-occurrence with *CDKN2A/B* mutations in both the Chinese and US GBC cases. Out of the top 9 dysregulated genetic pathways in cancer, Chinese patients harbored more frequent mutations in *ERBB* genes (30.6% vs. 19.0%, $P=0.04$). High frequency of PI3K/mTOR pathway variations was observed in both Chinese (37%) and US cohort (33%) ($P=0.5$). Additionally, both Chinese and US GBC patients exhibited a relatively high tumor

mutational burden (TMB) (17.6% and 17.0%, respectively). In the Chinese cohort, a significant association was seen between direct repair gene alterations and TMB ≥ 10 muts/Mb ($P=0.004$).

Conclusions: In our study, over 83% Chinese and 68% US GBC patients had actionable alterations that could potentially guide and influence personalized treatment options. The identification of high TMB, *ERBB2*, *CDKN2A/B*, PI3K/mTOR pathway and DNA repair mutations indicated that both Chinese and US GBC patients may benefit from targeted or immune checkpoint inhibitors.

Keywords: Gallbladder cancer (GBC); comprehensive genomic profiling (CGP); *ERBB2*; *CDKN2A/B*; PI3K/mTOR

Submitted Jan 25, 2019. Accepted for publication Mar 26, 2019.

doi: 10.21037/hbsn.2019.04.11

View this article at: <http://dx.doi.org/10.21037/hbsn.2019.04.11>

Introduction

Gallbladder cancer (GBC) is the most common malignancy of the biliary tract cancer. It often presents at an advanced, unresectable stage, and has an aggressive course with a 5-year survival rate of less than 5% (1). This disease is considered rare in the US, while it is more common in geographic pockets, including the West coast of Latin America, particularly Chile, Eastern Europe, Northern India and East Asia.

While, surgery can offer potential cure, GBC is often diagnosed at an advanced stage with limited treatment options. Systemic therapy comprising of gemcitabine and cisplatin is the first line therapy for locally advanced and metastatic and the benefit of second line treatment is unknown at this time (2,3). This is therefore an area of unmet need and novel targeted therapy or immunotherapy approaches are needed.

In recent times, next generation sequencing (NGS) has been incorporated in the management of various cancers. Prior studies have documented important differences in mutation spectra between the Asian and Western patients within the same cancer type. For example, the *EGFR* L858R mutation rate in Chinese non-small cell lung cancer population was higher (39%), while *KRAS* mutation rate was lower (11%) as compared with the Western patients (4). Also, *RHPN2*, *GLI3* and *MRC2* have higher mutation rates in the Chinese population (5). These results are of clinical value both for targeted therapy as well as to understand the underlying basis for clinical and epidemiologic differences. Data regarding genetic heterogeneity of GBC in different populations are very limited and need further investigation given the varied geographic distribution of this cancer.

Methods

Comprehensive genomic profiling (CGP)

Comprehensive profiling of genomic alterations (GAs) was

performed for formalin-fixed, paraffin-embedded (FFPE) tissue samples obtained from 108 Chinese and 107 US GBC patients using NGS based cancer gene panel as described below.

In all cases, 4 μ m thick paraffin sections were stained by hematoxylin and eosin (H&E), tumor cell content was assessed by the pathologist; 20% (tumor cellularity) were considered to be of acceptable quality. DNA extraction was performed, and 50–250 ng double-stranded DNA was interrupted ultrasonically.

Hybrid selection and sequencing

A custom hybridization capture panel including over 23,660 individually synthesized 5'-biotinylated DNA 120 bp oligonucleotides, and the library construction used the APA Hyper Prep Kit (KAPA Biosystems) were used, and the amount of sample DNA extracted for subsequent sequencing needed to be greater than 40 ng. Customized panel for approximately 2.6 Mb (7,029 exons of 450 cancer-associated genes and selected introns of 38 genes which commonly rearranged in cancer) was used. The captured libraries sequenced on an Illumina NextSeq 500 (sequencing mean coverage $\geq 700\times$). CGP was performed using the Yuansu assay (Origimed, China) Paired end sequencing (2 \times 75 bp) followed the manufacturer's protocol. For the US cohort, CGP was performed using the FoundationOne assay (Cambridge, USA), as previously reported (6,7). Following DNA extraction of ≥ 50 ng, hybridization capture of exons of 322 genes and introns of 31 genes that are commonly rearranged in cancer was performed. These libraries were sequenced with the mean coverage sequencing $\geq 700\times$ (6). For the purpose of estimation of sequencing error rate, a PhiX spike-in was added as an external control to measure the percentage of reads with 0–4 mismatches, following the

method described by Manley *et al.* (8). The gene list of the Yuansu (Origimed) and FoundationOne assay (Cambridge) between the two cohorts were presented in <http://fp.amegroups.cn/cms/hbsn.2019.04.11-1.pdf>.

Bioinformatics pipeline for single nucleotide variation (SNV) and short indels, long indel, copy number alternations (CNA) and gene rearrangement

Alignment of raw reads to the human genome reference sequence (hg19) was done with the Burrows-Wheeler Aligner (BWA, v0.6.2), followed by PCR duplicates removal using MarkDuplicates algorithm from Picard (version 1.47). Local realignment and base quality recalibration for SNV was performed using GATK (v3.1-1) and subsequently called by MUTECT (v1.7). Short insertion/deletions were calibrated for alignment using ABRA (v0.97) and then called by PINDEL (v0.2.5a8). Common single nucleotide polymorphism (SNPs) defined as those from dbSNP database (version 147).

For detection of long indel (deletion size 100 bp–3 kbp, insertions 25 bp–3 kbp), adaptor sequences were first removed and the resulted reads having more than 1% bases with quality score less than 15 were excluded, error bases were then corrected. All high-quality reads were collected and potential error was corrected for each base to achieve matched k-mer ($k=33$) with high confidence, the cleaned reads were then assembled into multiple Unitigs by FM-index algorithm (9), the resulted Unitigs were aligned to the hg19 reference genome and L-indels were inferred from breakpoint information. The matched normal reference DNA was needed for making this L-indel calls.

To identify CNA, aligned reads were first normalized by EXCAVATOR (version v2.2). Log₂ ratio of the read depths between tumor tissue and matched normal blood was calculated. Segmentation was performed based on Bayesian information criterion (10). Tumor cellularity was estimated by allele frequencies of over 4,000 sequenced SNPs, following the method in ASCAT (11).

To validate gene rearrangement, paired-end reads with abnormal insert size of over 2,000 bp aligned to the same chromosome or aligned to different ones were collected and used as discordant reads. The group consisting of discordant reads with the distance less than 500 bp formed a cluster and paired clusters were obtained according to the pairing relationship. Consistent breakpoints from the paired-end discordant reads within a cluster were identified and the corresponding reads were further assembled by

fermi-lite to establish potential rearrangement breakpoints. The candidates reads supporting gene rearrangement were genomic annotated.

Tumor mutational burden (TMB)

For Chinese cohort, TMB was estimated for each sample by counting its somatic mutations including coding SNVs and indels per megabase. Driver mutations and germline alterations in dbSNP database were not counted, following the method of Chalmers *et al.* (12). Innovatively, TMB of each sample were turned into adjusted panel TMB with a linear predictive model.

For US cohort, all base substitutions and indels in the coding region of targeted gene were counted (12). Alterations listed as known somatic alterations in COSMIC and truncations of tumor suppressor genes, germline mutation were not counted for TMB calculation (13,14).

Microsatellite instability (MSI)

MSI status was determined in all cases with detectable TMB status. According to the MSI score, we classified the samples as MSI high, defined as instability in 2 or more microsatellite loci; MSI low, defined as instability in only 1 locus; and microsatellite stable (MSS), defined as absence of any evidence of microsatellite loci instability. If the results for a sample were ambiguous, the analysis would be performed again. Polymerase chain reaction (PCR) validation confirms the diagnosis of MSI high.

Immunohistochemistry (IHC)

FFPE Sections (4 μm thick) were incubated with antibody against programmed death-ligand 1 (PD-L1) using 28-8 pharmDx assay and the Dako PD-L1 IHC 22C3 pharmDx assay IHC assays were performed on a Gene Stainer automated staining instrument according to the manufacturer's instructions. IHC was carried out on FFPE sample using a well-established method (15). All immunohistochemical stained sections were independently analyzed by two pathologists, and the positive criteria used the standards method (16-18).

Statistical analysis

Alignment of raw reads to the human genome reference sequence (hg19) was done. Comparison between the

Table 1 Patients' demographics and clinical characteristics

Parameters	Chinese cohort, N=108 (%)	US cohort, N=107 (%)	P value
Age (years): median [range]	61 [31–85]	64 [38–86]	0.5
Gender			1
Female	70 (64.8)	69 (64.5)	
Male	38 (35.2)	38 (35.5)	
Subtype			0.1
Gallbladder adenocarcinoma	100 (92.6)	98 (91.6)	
Mixed adenocarcinoma	2 (1.9)	3 (2.8)	
Others	6 (5.6)	6 (5.6)	
Histological grade			0.3
Well/moderately differentiated	38 (35.2)	48 (44.9)	
Poorly/undifferentiated	59 (54.6)	51 (47.7)	
Not available	11 (10.2)	8 (7.5)	

Chinese and US cohort in all classes of GAs, TMB, MSI was done. χ^2 or Fisher exact test was used to assess associations between clinical characteristics and high frequency mutation between the two cohorts. Statistical analysis was performed using IBM SPSS version 23.0 (Armonk, USA). P values greater than 0.05 were considered significant.

Results

Patient population

One hundred and eight Chinese and 107 US GBC patients were included. The Chinese cohort comprised of 70 females and 38 males with male-to-female ratio 0.5:1, median age at diagnosis was 61 years and most of them (92.6%) had adenocarcinoma. Other histologies were squamous, mixed adenosquamous, or neuroendocrine. The US GBC patients comprised of 69 females and 38 males with median age at diagnosis of 64 years. In this cohort, 98 (91.6%) had adenocarcinoma (Table 1).

Mutational landscape of GBC patients

Among Chinese patients, the most frequently altered genes were *TP53* (69.4%), *CDKN2A/B* (26%), *ERBB2* (18.5%), *PIK3CA* (17%) and *CCNE1* (13%) with 83.3% of patients having at least one actionable genetic aberration. Actionable

genetic aberration was based on databases such as oncoKB (www.oncoKB.org), cosmic (cancer.sanger.ac.uk/cosmic), clinicaltrials (cancer.sanger.ac.uk/cosmic/) and pubmed (www.ncbi.nlm.nih.gov/pubmed). While, in US patients the most commonly reported genetic aberrations were *TP53* (57.9%), *CDKN2A/B* (25%), *SMAD4* (17%), *PIK3CA* (14%), *ARID1A* (14%) and *ERBB2* (13.1%) with 68.2% of patients having at least one actionable genetic aberration (Figures 1,2). Out of the most commonly dysregulated genetic pathways in cancer, genetic aberrations in *ERBB* pathway were more frequent in Chinese cohort as compared to US cohort (30.6% vs. 19.0%, P=0.04). Additionally, genetic aberrations in DNA repair pathway were more frequent in Chinese cohort, in particular *ATM* (8.3% vs. 1.9%, P=0.03) and *CDK12* (9.3% vs. 0.9%, P=0.006). DNA repair gene mutation status for these cohorts is depicted in Table 2. Moreover, high frequency of PI3K/mTOR pathway genetic aberrations was noticed in both Chinese (37%) and US cohort (33%) (37% vs. 33%, P=0.5).

TMB was analyzed in 108 Chinese patients and 53 US patients. Notably, both Chinese and US GBC patients exhibited high TMB ≥ 10 muts/Mb in 17.6% and 17.0%, respectively. While, in Chinese cohort the median TMB (range) was 5.4 muts/Mb (0.8–36.7), it was 5 mut/Mb (0–65) in US cohort. All samples in Chinese cohort were MSS. For US Cohort, microsatellite instability-high (MSI-H) accounted for 3.3% (1/30) of GBC, with average TMB of 30 muts/Mb.

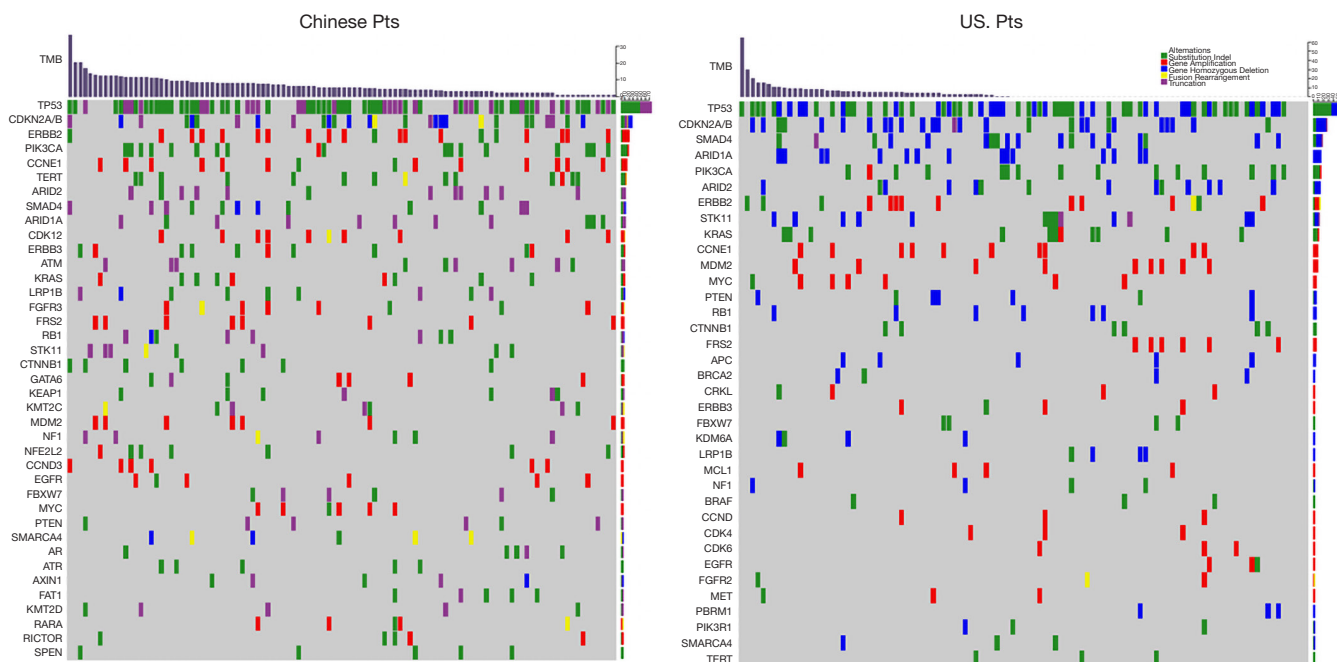


Figure 1 Mutational landscape of GBC patients. Top panel indicates the distribution of TMB value in Chinese and US GBC patients. Bottom panel shows mutational landscape among the two cohorts. Mutations are colored according to mutation types of substitution/indel, gene amplification, gene homozygous deletion, truncation and fusion/rearrangement. Alteration types are presented in the legend at the top right. Pts, patients; TMB, tumor mutational burden; GBC, gallbladder cancer.

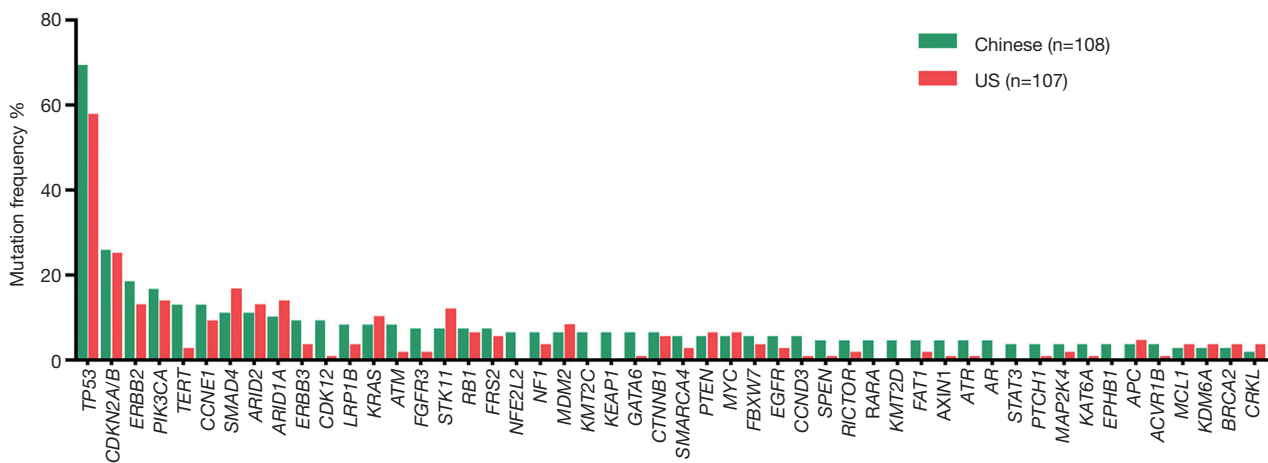


Figure 2 The most common alterations in both cohorts, each gene is separately stated in China (108 patients) and US (107 patients).

PD-L1 expression was assessed in 21 out of 108 Chinese patients with no available data about PD-L1 expression in US GBC patients. At cut off point 1%, 6/21 (29%) had PD-L1 overexpression; and at cut-off point 50%, 3/21 patients (14%) had PD-L1 tumor sample expression. Representative picture is shown in *Figure 3*.

Actionable mutations

ErbB family mutation status

In our cohorts, mutations in ErbB family including *EGFR*, *ERBB2*, *ERBB3*, and *ERBB4* were identified. However, *ERBB4* mutation occurred only in Chinese patients

Table 2 Direct repair genes genetic aberrations in Chinese and US gallbladder cancer patients

Category	Gene	Chinese cohort N=108 (%)	US cohort N=107 (%)	P value
Care taker	<i>TP53</i>	75 (69.4)	62 (57.9)	0.08
	<i>CDK12</i>	10 (9.3)	1 (0.9)	0.006
	<i>BAP1</i>	3 (2.8)	0 (0.0)	0.2
Direct repair gene	<i>ATM</i>	9 (8.3)	2 (1.9)	0.03
	<i>ATR</i>	5 (4.6)	1 (0.9)	0.2
	<i>RAD50</i>	3 (2.8)	0 (0.0)	0.2
	<i>BRCA2</i>	3 (2.8)	4 (3.7)	1
	<i>BRCA1</i>	3 (2.8)	0 (0.0)	0.2
	<i>PALB2</i>	2 (1.9)	1 (0.9)	1
	<i>MSH2</i>	2 (1.9)	2 (1.9)	0.6
	<i>PRKDC</i>	1 (0.9)	0 (0.0)	NA
	<i>POLE</i>	1 (0.9)	0 (0.0)	NA
	<i>POLD1</i>	1 (0.9)	0 (0.0)	NA
	<i>MSH6</i>	1 (0.9)	1 (0.9)	NA
	<i>FANCA</i>	1 (0.9)	1 (0.9)	NA

NA, not available.

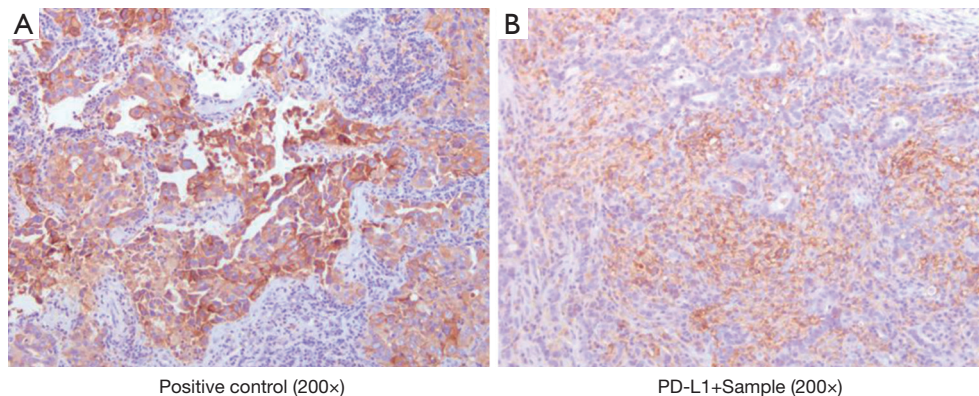


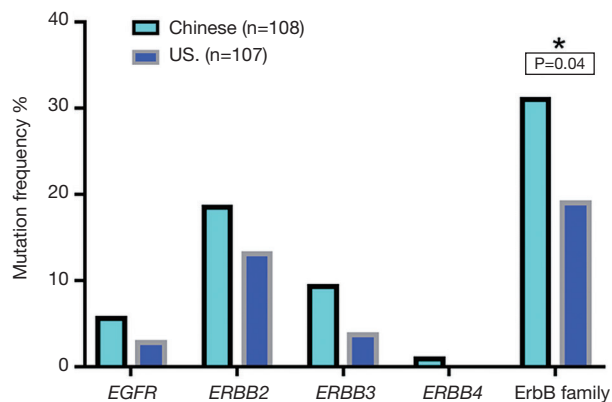
Figure 3 PD-L1 expression status of a Chinese GBC patient. PD-L1 expression was assessed in 21 out of 108 Chinese patients. (A) Positive control (200× magnification); (B) representative example of PD-L1 positive sample (200× magnification). GBC, gallbladder cancer; PD-L1, programmed death-ligand 1.

(Table 3, Figure 4). Chinese patients harbored more frequent mutations in ERBB family (30.6% vs. 18.7%, $P=0.04$). *ERBB2* variation was significantly associated with better tumor differentiation in both cohorts (Table 4). In our study, 5% (1/20) of *ERBB2* mutated cases in Chinese cohort had coexisting *KRAS* mutation while this association was not observed in US patients. Interestingly, *ERBB2* genetic

aberrations were tended to co-occurrence with *CDKN2A/B* mutations in Chinese GBC cases [95% confidence interval (CI): 1.7–17.6, odds ratio 5.4, $P=0.0014$], and were strong tended to co-occurrence with *CDKN2A/B* variations in US GBC cases (95% CI: 2.7–53.2; odds ratio 10.8, $P=0.0001$). Eleven (55%) out of 20 Chinese patients with *ERBB2* genetic aberrations had *CDKN2A/B* mutations whereas

Table 3 ErbB family gene mutation frequency in Chinese and US gallbladder cancer patients

Gene variation	Chinese patients, N=108 (%)	US patients, N=107 (%)	P value
<i>EGFR</i>	6 (5.6)	3 (2.8)	0.5
<i>ERBB2</i>	20 (18.5)	14 (13.1)	0.4
Amplification	16/20 (80.0)	9/14 (64.3)	
Mutation	4/20 (20.0)	4/14 (28.6)	
Fusion/rearrangement	0 (0.0)	1/14 (7.1)	
<i>ERBB3</i>	10 (9.3)	4 (3.7)	0.1
<i>ERBB4</i>	1 (0.9)	0 (0.0)	1
ErbB family	33 (30.6)	20 (18.7)	0.04

**Figure 4** Chinese patients harbored more frequent mutations in ErbB family. Mutations in ErbB family including *EGFR*, *ERBB2*, *ERBB3*, and *ERBB4* has been identified except for *ERBB4* which was found only in Chinese patients, Chinese patients harbored more frequent mutations in ErbB family (30.6% vs. 19.0%, P=0.04).

10 (71.4%) out of 14 *ERBB2* US patients had *CDKN2A/B* mutations (Table 5). For Chinese patients with *ERBB2* genetic aberrations, 80.0% (16/20) patients had *ERBB2* gene amplification, 20.0% (4/20) patients had substitution. In US cohort, 64.3% (9/14) patients with *ERBB2* gene amplification, 28.6% (4/14) patients had *ERBB2* gene substitution and 7.1% (1/14) patients had *ERBB2* gene fusion/rearrangement. *ERBB2* S310Y and S310F were the most common substitution types in both cohorts.

DNA repair pathway

DNA repair genetic aberrations were classified into direct, which include *ATM*, *ATR*, *BRCA1*, *BRCA2*, *FANCA*, *FANCD2*, *MLH1*, *MSH2*, *MSH6*, *PALB2*, *POLD1*, *POLE*, *PRKDC*, *RAD50*, and *SLX4* and caretaker genes comprising of *BAP1*, *CDK12*, *MLL3*, *TP53*, *BLM*. Significant association was seen between direct repair genetic

Table 4 Correlation between *ERBB2* and histological grade

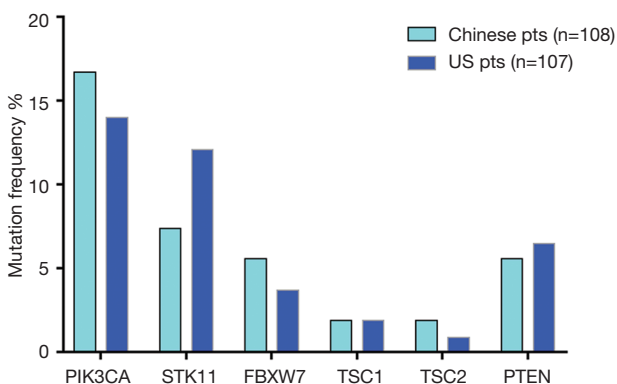
Cohort	<i>ERBB2</i>	Poorly/undifferentiated (%)	Well/moderately differentiated (%)	P value
Chinese cohort	MT*	6 (33.3)	12 (66.7)	0.008
	WT**	53 (67.1)	26 (32.9)	
US cohort	MT***	3 (23.1)	10 (76.9)	0.03
	WT****	25 (58.1)	18 (41.9)	

*, data is not available in 2 patients; **, data is not available in 9 patients; ***, data is not available in 1 patient; ****, data is not available in 50 patients. MT, mutant type; WT, wild type.

Table 5 Correlation between *ERBB2* and *CDKN2A/B* mutation status

Cohort	<i>ERBB2</i>	<i>CDKN2A/B</i> MT (%)	<i>CDKN2A/B</i> WT (%)	Odds ratio	P value
Chinese cohort	MT*	11 (55.0)	9 (45.0)	5.4	0.0014
	WT**	16 (18.2)	72 (81.8)		
US cohort	MT***	10 (71.4)	4 (28.6)	10.8	0.0001
	WT****	17 (18.3)	76 (81.7)		

*, data is not available in 2 patients; **, data is not available in 9 patients; ***, data is not available in 1 patient; ****, data is not available in 50 patients. NA, not available; MT, mutant type; WT, wild type.

**Figure 5** PI3K/mTOR pathway gene mutation status in Chinese and US cohorts.

aberrations and TMB ≥ 10 in Chinese cohort ($P=0.004$).

PI3K/mTOR pathway

High frequency PI3K/mTOR pathway variation was observed in both Chinese (37%) and US cohort (33%) ($P=0.5$), including *PIK3CA*, *FBXW7*, *TSC1/2*, *STK11*, and *PTEN* (Figure 5). There was no significant difference in the variation of these genes between two cohorts.

Discussion

To successful treatment of GBC, the important strategy is to understand the pathogenesis of it. Gallstones, gallbladder polyps, chronic cholecystitis and primary sclerosing cholangitis are etiologic factors in the western countries while chronic Salmonella and H. Pylori infections predispose to this cancer in the developing world (19-21). Additionally, although only a small proportion of patients with gallstone disease develop GBC, the presence of gallstones has been consistently linked with increased risk of GBC (22). Molecular alterations playing a role in the

pathogenesis of GBC: from chronic inflammation (*TP53*); hyperplasia, dysplasia, *in situ* carcinoma (loss of p16/gain of CDK4/cyclin D1); invasive adenocarcinoma and finally metastatic disease (pERK1/2, Hedgehog pathway/VHL overexpression) (23). In our study, genetic aberrations: *TP53*, (69.4% vs. 57.9%), *CDKN2A/B* (26% vs. 25%), *ERBB2* (18.5% vs. 13.1%) *PIK3CA* (17% vs. 14%) was observed in Chinese and US cohort respectively, The evidence available is supporting the involvement of some genetic aberrations in the development of GBC.

Our study examines the somatic genomic landscape of GBCs in Asia and the West and has made several interesting observations. Both Chinese and US patients with GBC have a relatively high TMB. Genetic aberrations in *ERBB*, *PI3K/mTOR* and DNA repair pathway occur in both Chinese and US GBC patients and targeted therapies or immune checkpoint inhibitors are worthy of further investigation in this cancer. Currently, none of genomically matched targeted therapy or immune checkpoint inhibitors are FDA-approved for treatment of GBCs. *ERBB2* genetic aberration was one of the most common actionable genetic aberrations in both the Chinese and US cohort. In our study, *ERBB2* genetic aberrations account for 18.5% in Chinese patients and 13.1% in US patients, and *ERBB2* gene amplification was the most common variation type. *ERBB2* genetic aberrations, particularly amplification may represent an important opportunity for targeted therapy. The use of HER2/neu-directed therapy including trastuzumab, lapatinib, pertuzumab and ado-trastuzumab emtansine have been under investigation. In a retrospective study of eight GBC patients with *ERBB2* gene amplification treated with trastuzumab, lapatinib, or pertuzumab, over 50% of patients achieved partial response or complete response (24). Similar results were reported when *ERBB2*-directed therapy was combined with taxanes (25). In our Chinese cohort, a 45-year-old female patient diagnosed with locally advanced T4N2M0 GBC underwent cholecystectomy.



Figure 6 A 45-year-old Chinese T4N2M0 gallbladder papillary adenocarcinoma patient. CT images demonstrate (A) before cholecystectomy; (B) after 1.5 months of trastuzumab; (C) after 3 months (3 cycles) of trastuzumab with nab-paclitaxel.

CGP showed *ERBB2* amplification, *CDK12* amplification, *ARID2* exon 4-exon 18 deletion (108 kb), *ARID2* c.5148-2A>G (splicing site mutation), *TP53* M237I, and TMB 4.6 muts/Mb. Post-operative computerized tomography showed multiple enlarged hepatic hilar and retroperitoneal lymph node. Patient was treated with trastuzumab plus nab-paclitaxel and remained stable for 5 months (Figure 6). Additionally, we observed that *ERBB2* alteration is positively correlated with differentiation both in Chinese and US cohort. Similarly, Yoshikawa *et al.* reported a higher incidence of *ERBB2* gene amplification in well differentiated cholangiocarcinoma (26). *ERBB2* acts as an oncogene in several human cancers (24,27). Overexpression of ErbB-2 in the basal layer of biliary tract epithelium led to the development of gallbladder adenocarcinoma in 100% of transgenic mice by 3 months of age (28). This suggests that *ERBB2* overexpression can potentially drive gallbladder carcinogenesis.

KRAS genetic aberrations have been previously reported in 3–30% of GBC patients (29). Previous studies identified coexisting *KRAS* mutations with *ERBB3* genetic aberrations in primary GBC tumor tissue and GBC cell lines (30). In our study, we observed concurrent *KRAS* G12A mutation with *ERBB2* in 5% of Chinese GBC patients but not in US cohort. The presence of *KRAS* mutation may be a negative predictive factor for HER2-directed therapy (30,31). The current study is the first to report co-occurrence between *ERBB2* and *CDKN2A/B* genetic aberration. Based on The cBioPortal for Cancer Genomics (32) (<http://cbioportal.org>), $2 < \text{odds ratio} < 10$ indicated the tendency toward co-occurrence, strong tendency towards co-occurrence (Odds Ratio > 10). *ERBB2* genetic aberrations were tended to co-occurrence with *CDKN2A/B* mutations in Chinese GBC cohort (odds ratio 5.4, $P=0.0014$), and were strong tended to co-occurrence with *CDKN2A/B* variations in US GBC

cohort (odds ratio 10.8, $P=0.0001$). On another hand, *CDKN2A/2B* alterations were significantly associated with distant metastases in our study. The biological interrelationships between these mutations need further study.

In our study, high tumor mutational burden (TMB-H) was defined as $\text{TMB} \geq 10$, based on the recently published results of the CheckMate 568 that showed 44% overall response rate in patients with non-small cell lung cancer treated with nivolumab and ipilimumab regardless of the PD-1 expression. We identified that 17.6% of the Chinese GBC patients and 17.0% of US GBC patients have TMB-H. Additionally, a significant association between direct DNA repair GAs and TMB-H has been observed in Chinese patients. This emphasizes the importance of using PD-1 inhibitors alone and combined with PARP inhibitors in this subpopulation.

Our study has some important limitations. We have used two different NGS platforms that have two distinct targeted gene panels. However, in the analysis we included 320 overlapping genes (<http://fp.amegroups.cn/cms/hbsn.2019.04.11-1.pdf>). Furthermore, due to lack of epidemiological and clinicopathological data, we did not assess genomic profiling variation in regards to disease risk factors and staging. The data regarding PD-L1 expression was only available in 19% of Chinese patients, PD-L1 data was not available in US cohort. Therefore, we could not identify variations in immune biomarker expression between the two cohorts in this study.

In conclusion, GBC is highly mutated cancer with over 83% Chinese and 68% US gallbladder patients had at least 1 actionable alteration with high *ERBB2* mutation rates and high TMB. We identified some actionable alterations between Chinese and US gallbladder patients, some of which may have therapeutic implications. The findings

presented here highlight the need for prospective genomic characterization of patients with GBC, and enrich drug target in the design of future clinical trials, development of model systems, and the assessment of patient outcomes. Future clinical trials are also required to gauge the efficacy and safety of targeted and immunotherapy in this cancer.

Acknowledgments

None.

Footnote

Conflicts of Interest: F Pang, C Zou, S Mu, Y Xing and K Wang are employees of Origimed. The other authors have no conflicts of interest to declare.

Ethical Statement: The study was approved by Medical ethics committee, Hunan Provincial People's Hospital/The First Affiliated Hospital of Hunan Normal University (IEC number: 2017-15).

References

- Rakić M, Patrlj L, Kopljar M, et al. Gallbladder cancer. *Hepatobiliary Surg Nutr* 2014;3:221-6.
- Kabbach G, Assi HA, Bolotin G, et al. Hepatobiliary Tumors: Update on Diagnosis and Management. *J Clin Transl Hepatol* 2015;3:169-81.
- Lamarca A, Barriuso J, McNamara MG, et al. Biliary Tract Cancer: State of the Art and potential role of DNA Damage Repair. *Cancer Treat Rev* 2018;70:168-77.
- Wu K, Zhang X, Li F, et al. Frequent alterations in cytoskeleton remodelling genes in primary and metastatic lung adenocarcinomas. *Nat Commun* 2015;6:10131.
- Cancer Genome Atlas Research Network. Comprehensive molecular profiling of lung adenocarcinoma. *Nature* 2014;511:543-50.
- Frampton GM, Fichtenholtz A, Otto GA, et al. Development and validation of a clinical cancer genomic profiling test based on massively parallel DNA sequencing. *Nat Biotechnol* 2013;31:1023-31.
- He J, Abdel-Wahab O, Nahas MK, et al. Integrated genomic DNA/RNA profiling of hematologic malignancies in the clinical setting. *Blood* 2016;127:3004-14.
- Manley LJ, Ma D, Levine SS. Monitoring Error Rates In Illumina Sequencing. *J Biomol Tech* 2016;27:125-8.
- Li H. Fast construction of FM-index for long sequence reads. *Bioinformatics* 2014;30:3274-5.
- Xi R, Lee S, Xia Y, et al. Copy number analysis of whole-genome data using BIC-seq2 and its application to detection of cancer susceptibility variants. *Nucleic Acids Res* 2016;44:6274-86.
- Van Loo P, Nordgard SH, Lingjaerde OC, et al. Allele-specific copy number analysis of tumors. *Proc Natl Acad Sci USA* 2010;107:16910-5.
- Chalmers ZR, Connelly CF, Fabrizio D, et al. Analysis of 100,000 human cancer genomes reveals the landscape of tumor mutational burden. *Genome Med* 2017;9:34.
- Bamford S, Dawson E, Forbes S, et al. The COSMIC (Catalogue of Somatic Mutations in Cancer) database and website. *Br J Cancer* 2004;91:355-8.
- Lek M, Karczewski KJ, Minikel EV, et al. Analysis of protein-coding genetic variation in 60,706 humans. *Nature* 2016;536:285-91.
- McCourt CM, Boyle D, James J, et al. Immunohistochemistry in the era of personalised medicine. *J Clin Pathol* 2013;66:58-61.
- Garon EB, Rizvi NA, Hui R, et al. Pembrolizumab for the treatment of non-small-cell lung cancer. *N Engl J Med* 2015;372:2018-28.
- Paik JH, Choe G, Kim H, et al. Screening of anaplastic lymphoma kinase rearrangement by immunohistochemistry in non-small cell lung cancer: correlation with fluorescence in situ hybridization. *J Thorac Oncol* 2011;6:466-72.
- Wolff AC, Hammond ME, Hicks DG, et al. Recommendations for human epidermal growth factor receptor 2 testing in breast cancer: American Society of Clinical Oncology/College of American Pathologists clinical practice guideline update. *Arch Pathol Lab Med* 2014;138:241-56.
- Sharma A, Sharma KL, Gupta A, et al. Gallbladder cancer epidemiology, pathogenesis and molecular genetics: Recent update. *World J Gastroenterol* 2017;23:3978-98.
- DeLeon TT, Ahn DH, Bogenberger JM, et al. Novel targeted therapy strategies for biliary tract cancers and hepatocellular carcinoma. *Future Oncol* 2018;14:553-66.
- Wistuba II, Gazdar AF. Gallbladder cancer: lessons from a rare tumour. *Nat Rev Cancer* 2004;4:695-706.
- Mhatre S, Wang Z, Nagrani R, et al. Common genetic variation and risk of gallbladder cancer in India: a case-control genome-wide association study. *Lancet Oncol* 2017;18:535-44.
- Barreto SG, Dutt A, Chaudhary A. A genetic model for gallbladder carcinogenesis and its dissemination. *Ann*

- Oncol 2014;25:1086-97.
24. Javle M, Churi C, Kang HC, et al. HER2/neu-directed therapy for biliary tract cancer. *J Hematol Oncol* 2015;8:58.
 25. Czink E, Heining C, Weber TF, et al. Durable remission under dual HER2 blockade with Trastuzumab and Pertuzumab in a patient with metastatic gallbladder cancer. *Z Gastroenterol* 2016;54:426-30.
 26. Yoshikawa D, Ojima H, Iwasaki M, et al. Clinicopathological and prognostic significance of EGFR, VEGF, and HER2 expression in cholangiocarcinoma. *Br J Cancer* 2008;98:418-25.
 27. Gutierrez C, Schiff R. HER2: biology, detection, and clinical implications. *Arch Pathol Lab Med* 2011;135:55-62.
 28. Kiguchi K, Carbajal S, Chan K, et al. Constitutive expression of ErbB-2 in gallbladder epithelium results in development of adenocarcinoma. *Cancer Res* 2001;61:6971-6.
 29. Müller BG, De Aretxabala X, González Domingo M. A review of recent data in the treatment of gallbladder cancer: what we know, what we do, and what should be done. *Am Soc Clin Oncol Educ Book* 2014:e165-70.
 30. Iyer P, Shrikhande SV, Ranjan M, et al. ERBB2 and KRAS alterations mediate response to EGFR inhibitors in early stage gallbladder cancer. *Int J Cancer* 2019;144:2008-19.
 31. A phase 2b of eriyaspase in combination with gemcitabine or FOLFOX as second-line therapy in patients with metastatic pancreatic adenocarcinoma (NCT02195180). *Ann Oncol* 2017;28:v209-68.
 32. Gao J, Aksoy BA, Dogrusoz U, et al. Integrative analysis of complex cancer genomics and clinical profiles using the cBioPortal. *Sci Signal* 2013;6:p11.

Cite this article as: Yang P, Javle M, Pang F, Zhao W, Abdel-Wahab R, Chen X, Meric-Bernstam F, Chen H, Borad MJ, Liu Y, Zou C, Mu S, Xing Y, Wang K, Peng C, Che X. Somatic genetic aberrations in gallbladder cancer: comparison between Chinese and US patients. *Hepatobiliary Surg Nutr* 2019;8(6):604-614. doi: 10.21037/hbsn.2019.04.11