



Erratum to dexmedetomidine promotes breast cancer cell migration through Rab11-mediated secretion of exosomal TMPRSS2

Meng Chi¹, Xiaoding Shi¹, Xing Huo¹, Xiaohong Wu¹, Pinyi Zhang¹, Guonian Wang^{1,2}

¹Department of Anesthesiology, Harbin Medical University Cancer Hospital, Harbin, China; ²Pain Research Institute of Heilongjiang Academy of Medical Sciences, Harbin, China

Correspondence to: Guonian Wang, MD. Department of Anesthesiology, Harbin Medical University Cancer Hospital, 150 Haping Road, Nangang District, Harbin, China. Email: wangguonian609cn@aliyun.com.

doi: 10.21037/atm-2020-26

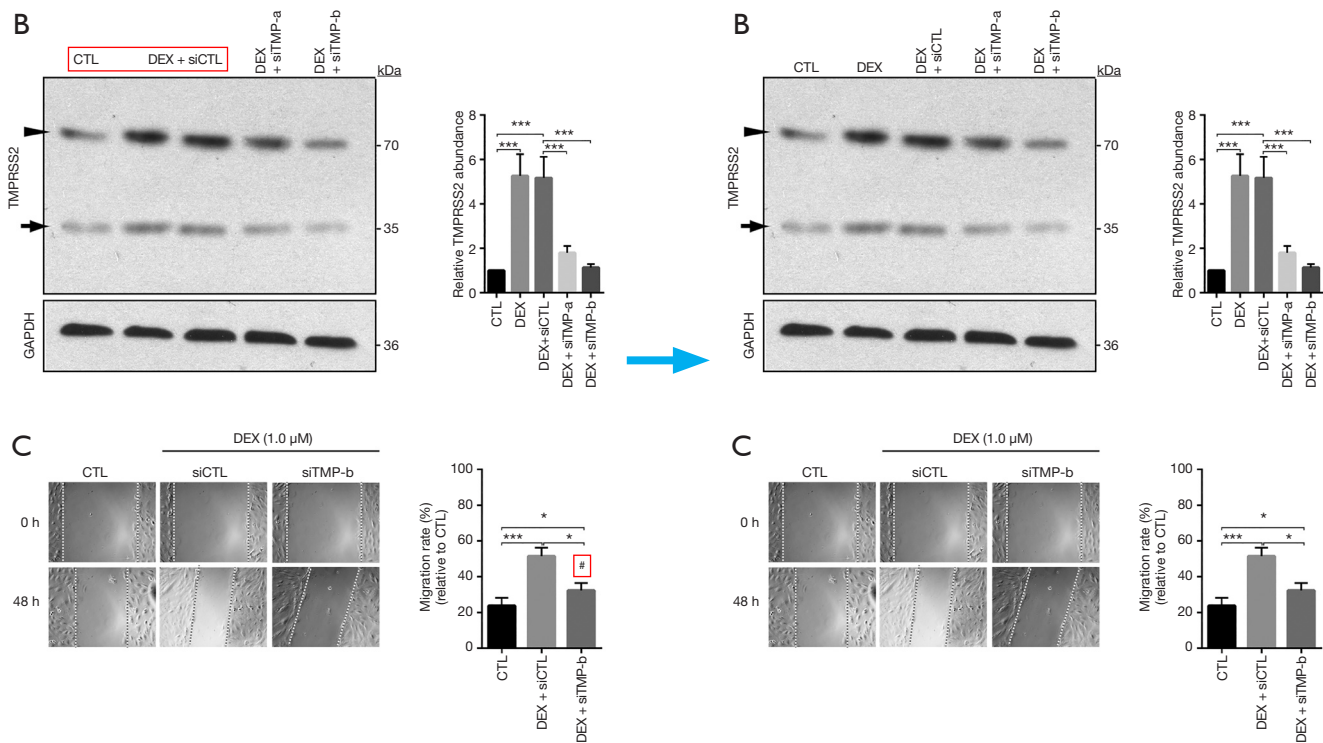
View this article at: <http://dx.doi.org/10.21037/atm-2020-26>

Erratum to: *Ann Transl Med* 2020;8:531.

Dexmedetomidine promotes breast cancer cell migration through Rab11-mediated secretion of exosomal TMPRSS2

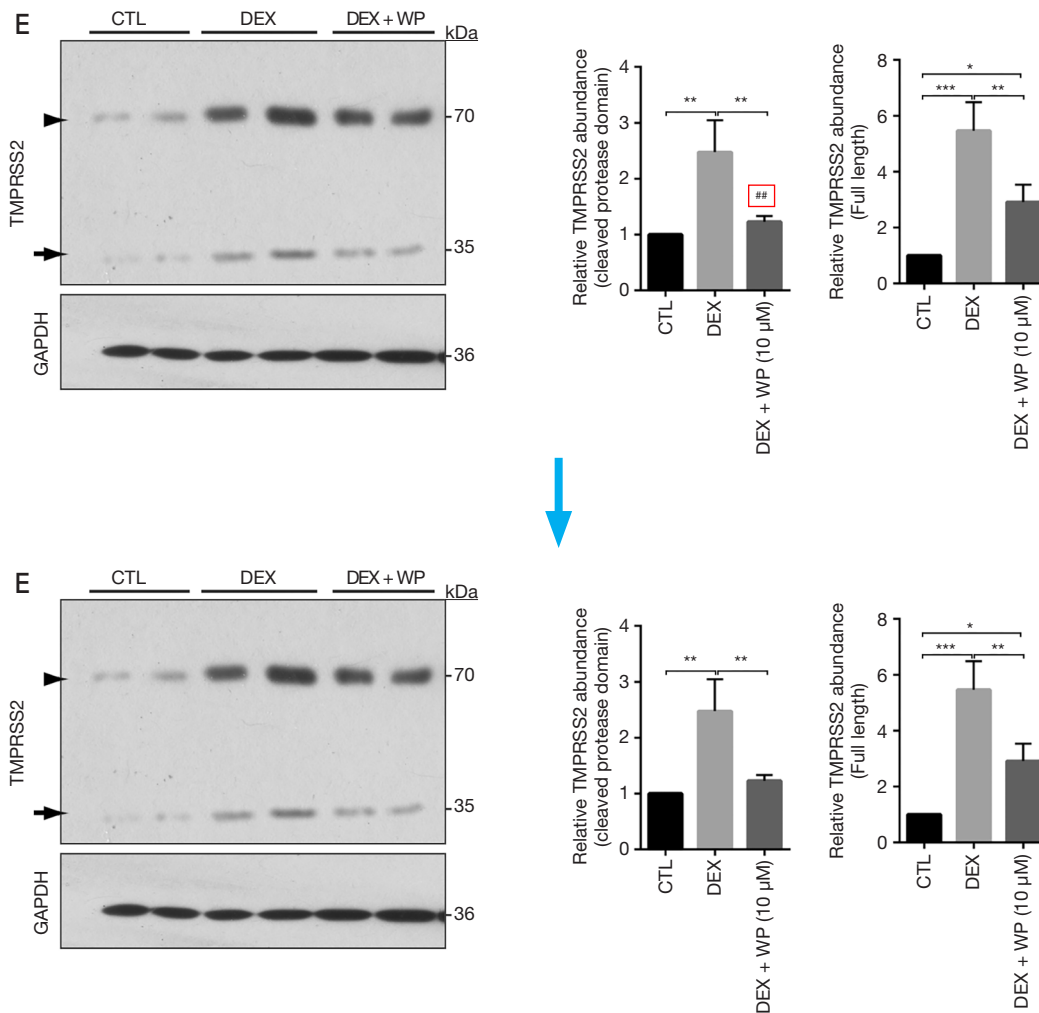
In the April 2020 issue of *Annals of Translational Medicine*, the paper “Dexmedetomidine promotes breast cancer cell migration through Rab11-mediated secretion of exosomal TMPRSS2” by Dr. Chi *et al.* (1) was published with some errors concerning the figures and should be corrected as follow.

In the left part of *Figure 2B*, “DEX” was missed and it should be added between “CTL” and “DEX + siCTL” while the legend for *Figure 2B* remains correct. In *Figure 2C*, the “[#]” should be removed, and accordingly the words “[#], P<0.05” in the figure legend should be deleted. So the *Figure 2B* and *Figure 2C* should be corrected as below:



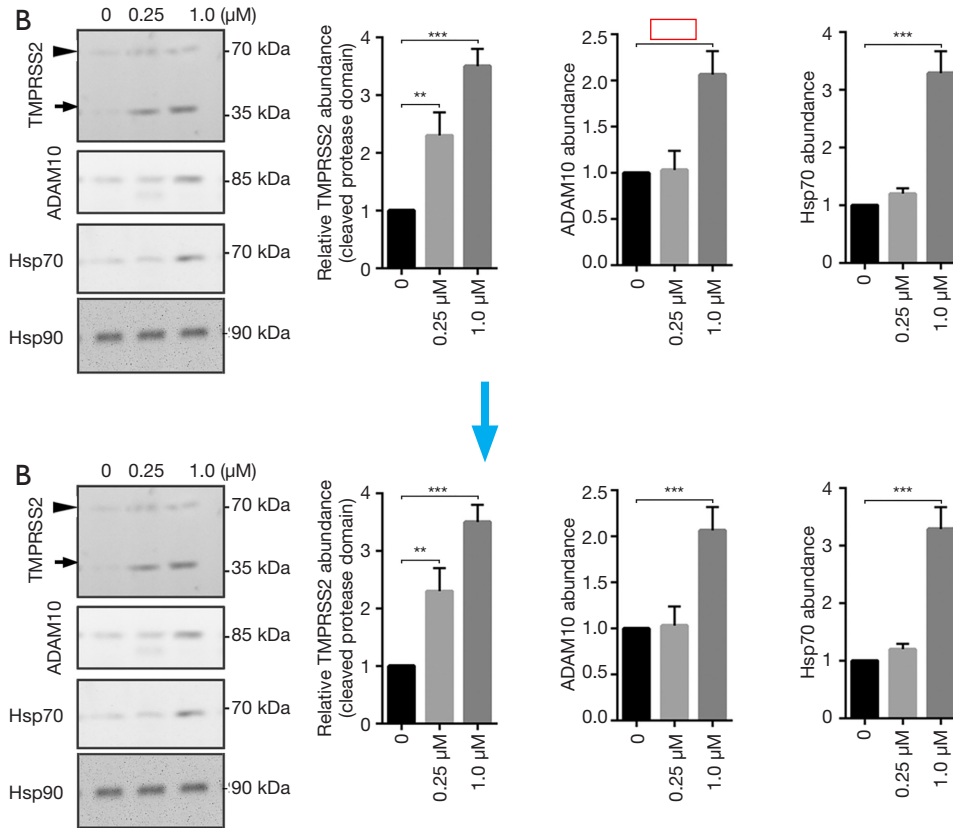
Corrected legend for *Figure 2C*: (C) Scratch assay was performed in DEX-treated MCF-7 that expressed siTMP-b. DEX-induced increase of migration was prevented by the siTMP-b. Magnification $\times 20$ for all panels. Data are presented as mean \pm SD. The experiment was carried out independently in triplicate. *, P<0.05; **, P<0.01; ***, P<0.001.

In *Figure 3E*, the “##” should be removed from the left graph and the words “##, P<0.01” in the figure legend should be accordingly deleted. So the *Figure 3E* should be corrected as below:

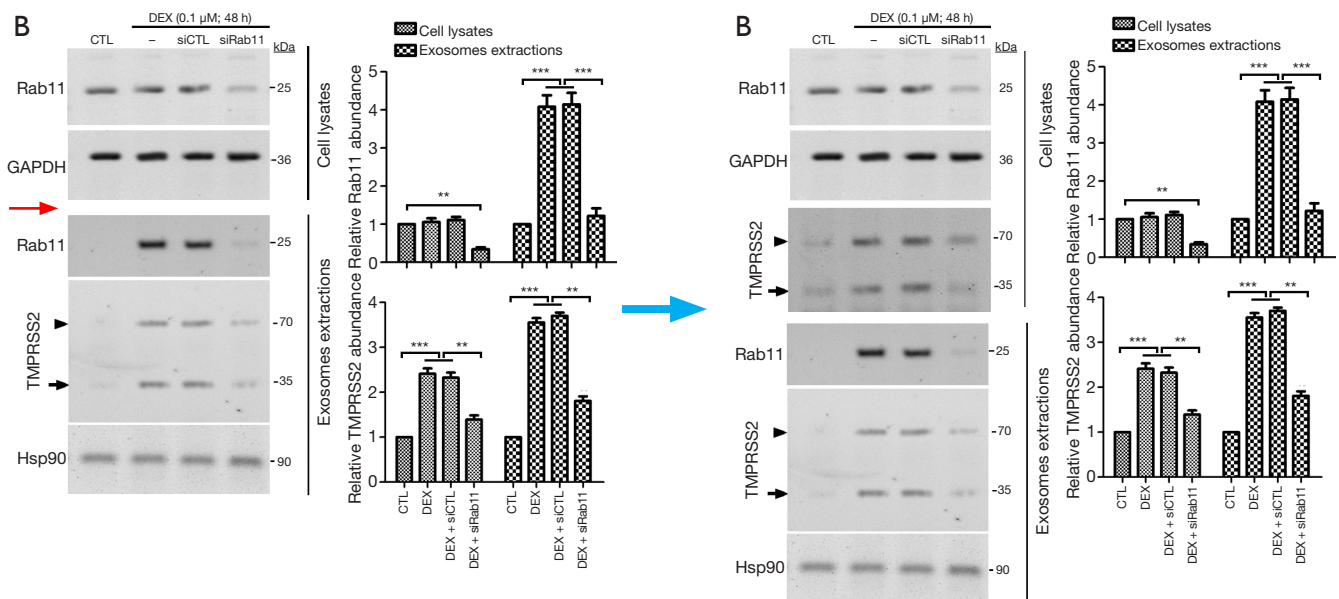


Corrected legend for *Figure 3E*: (E) MCF-7 was pretreated for 1 h with 10 μM of WP1066 followed by incubation for 48 h with 1 μM of DEX. Total cellular protein was extracted, and Western blot assay was performed to detect the expressions of full-length (arrowhead) and the cleaved protease domain (arrow) of TMPRSS2. Data are presented as the mean ± SD. The experiment was conducted independently in triplicate. *, P<0.05; **, P<0.01; ***, P<0.001.

In *Figure 4B*, the “****” was missed in the middle graph and it has been added. So, the *Figure 4B* should be corrected as below:



In *Figure S3B*, the blot for TMPRSS2 in the Cell lysates fraction was missed and it has been added. So the *Figure S3B* should be corrected as below:



The authors regret the errors and all inconveniences caused.

Open Access Statement: This is an Open Access article distributed in accordance with the Creative Commons Attribution-NonCommercial-NoDerivs 4.0 International License (CC BY-NC-ND 4.0), which permits the non-commercial replication and distribution of the article with the strict proviso that no changes or edits are made and the original work is properly cited (including links to both the formal publication through the relevant DOI and the license). See: <https://creativecommons.org/licenses/by-nc-nd/4.0/>.

References

1. Chi M, Shi X, Huo X, et al. Dexmedetomidine promotes breast cancer cell migration through Rab11-mediated secretion of exosomal TMPRSS2. *Ann Transl Med* 2020;8:531.

Cite this article as: Chi M, Shi X, Huo X, Wu X, Zhang P, Wang G. Erratum to dexmedetomidine promotes breast cancer cell migration through Rab11-mediated secretion of exosomal TMPRSS2. *Ann Transl Med* 2020;8(16):1040. doi: 10.21037/atm-2020-26