

Structure and space

Rachael Wren

Brooklyn, NY, USA

Correspondence to: Rachael Wren. Brooklyn, NY, USA. Email: rw@rachaelwren.com.

Submitted Dec 04, 2018. Accepted for publication Dec 10, 2018.

doi: 10.21037/cdt.2018.12.03

View this article at: <http://dx.doi.org/10.21037/cdt.2018.12.03>

My paintings use geometry to give form and structure to ephemeral natural phenomena. I am drawn to moments in nature when form and space seem to mingle, when edges disappear and atmosphere becomes all-encompassing—fog playing between tree branches, light shining through clouds, the water's horizon as it meets the sky. In my work, hints of landscape emerge and then dissolve into layers of subtly shifting color and mark. The small, discrete brushstrokes accumulate into dense, shimmering spaces, echoing the fundamental

particles that compose all matter. They hover and vibrate between the crisp lines of an anchoring grid, an interplay that suggests the universal duality between structure and randomness, order and chaos, the known and the unknown (*Figures 1-6*).

Rachael Wren lives and works in Brooklyn, NY. Her work has been exhibited in museums and galleries nationally and internationally, and she has been awarded numerous artist residencies and grants. More of Rachael's work can be seen at www.rachaelwren.com.

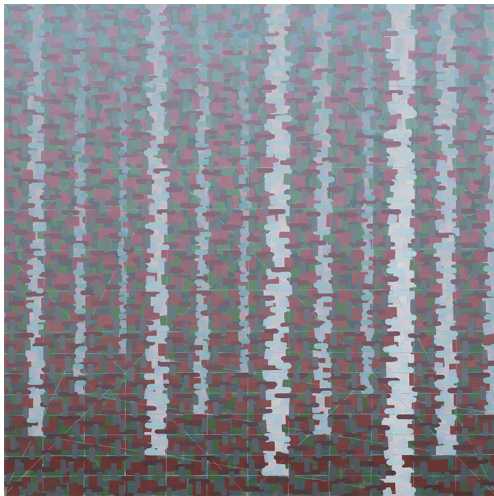


Figure 1 Parallax, oil on linen, 36 inches × 36 inches.

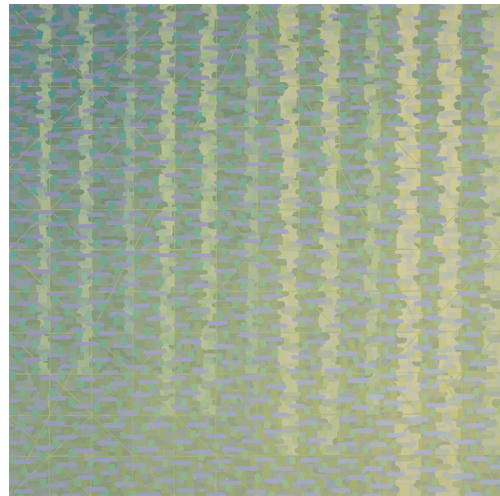


Figure 2 Dreamstate, oil on linen, 30 inches × 30 inches.

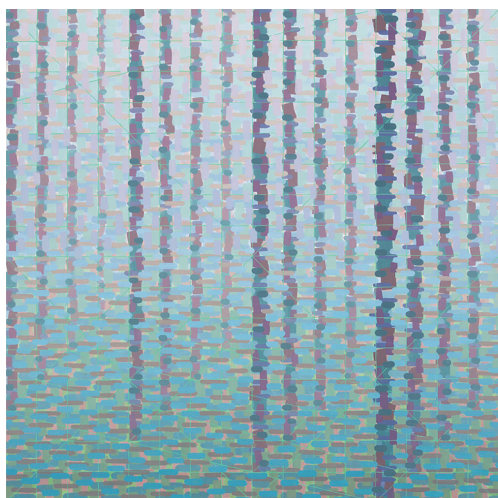


Figure 3 Threshold, oil on linen, 36 inches × 36 inches.



Figure 5 Overgrowth, oil on linen, 24 inches × 24 inches.

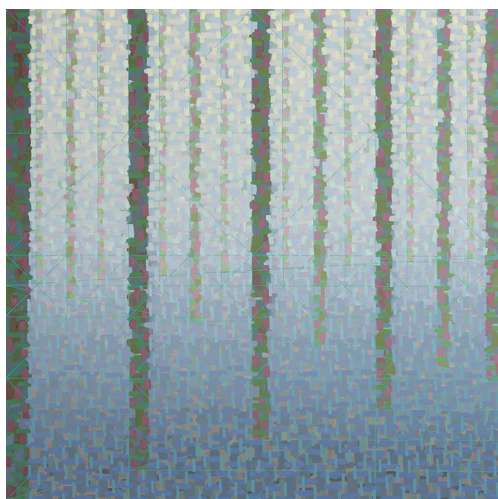


Figure 4 Mirage, oil on linen, 48 inches × 48 inches.

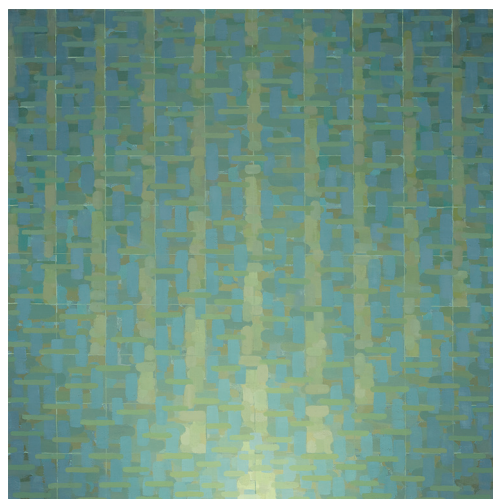


Figure 6 Marsh, oil on linen, 20 inches × 20 inches.

Acknowledgments

None.

Footnote

Conflicts of Interest: The author has no conflicts of interest to declare.

Cite this article as: Wren R. Structure and space. *Cardiovasc Diagn Ther* 2019;9(3):299-300. doi: 10.21037/cdt.2018.12.03