

Anatomical neon

Jessica Lloyd-Jones

North Wales, UK

Correspondence to: Jessica Lloyd-Jones. North Wales, UK. Email: jessica.lloydjones1@btinternet.com.

Submitted Dec 05, 2018. Accepted for publication Dec 10, 2018.

doi: 10.21037/cdt.2018.12.02

View this article at: <http://dx.doi.org/10.21037/cdt.2018.12.02>

During an International Visiting Artist Fellowship at Urban Glass, New York, Jessica Lloyd-Jones created a series of ‘Anatomical Neon’ artworks inspired by biological electricity—the presence of natural electrical activity in the human body.

The human anatomy is a complex, biological system in which energy plays a vital role. The blown glass organs encapsulate inert gases displaying different colours under the influence of an electric current. ‘Pulse’ is a representation of the human heart illuminated by still red neon gas (*Figure 1*). ‘Brain Wave’ conveys neurological processing activity as a kinetic and sensory, physical phenomena through its display of moving electric plasma (*Figure 2*). ‘Optic Nerve’ shows a similar effect, more akin to the blood vessels of the eye and with a front ‘lens’ magnifying the movement and the intensity of light (*Figure 3*). ‘Electric Lungs’ is a more technically intricate structure

with xenon gas spreading through its passage ways, communicating our human unawareness of the trace gases we inhale in our breathable atmosphere (*Figure 4*).

The work has been exhibited nationally and internationally, including SOFA New York [2010], Second European Triennial of Ceramic and Glass, Mons, Belgium [2010], Foundation Claude Verdan, Musee de la Main, Lausanne, Switzerland [2013], Ruthin Craft Centre and Mission Gallery, Wales [2014], Canary Wharf, London [2015].

Jessica Lloyd-Jones is a visual artist based in North Wales, with a First Class Honours degree in Fine Art and MFA in Sculpture from Edinburgh College of Art in 2007. Merging art, science and technology, Jessica Lloyd-Jones explores concepts of energy, matter and natural phenomena through the innovative use of materials and light to provide new perspectives on the world in which we live. She presents this enquiry in a broad portfolio of work which includes light

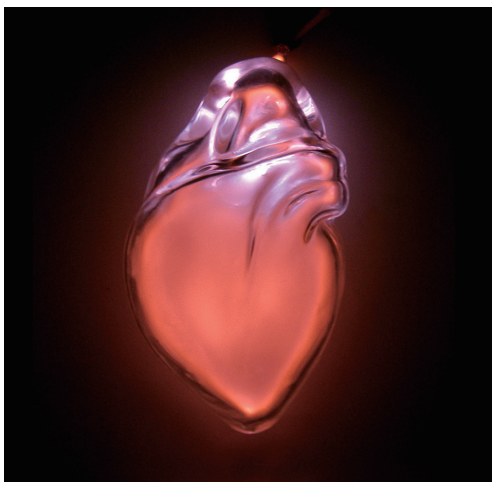


Figure 1 ‘Pulse’ 2008–2010, 16 cm × 12 cm × 10 cm, Blown glass, neon, electrics.

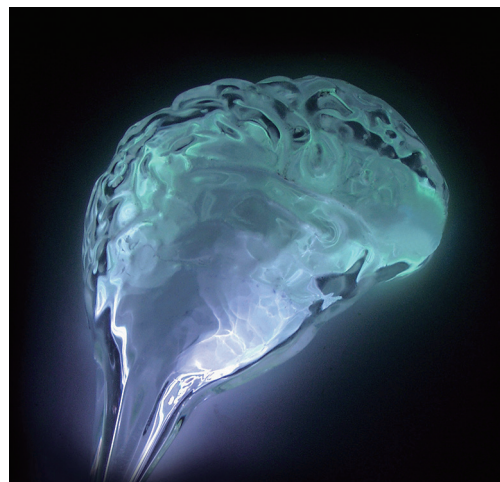


Figure 2 ‘Brain Wave’ 2008–2010, 21 cm × 14 cm × 6 cm, Blown glass, xenon, electrics.

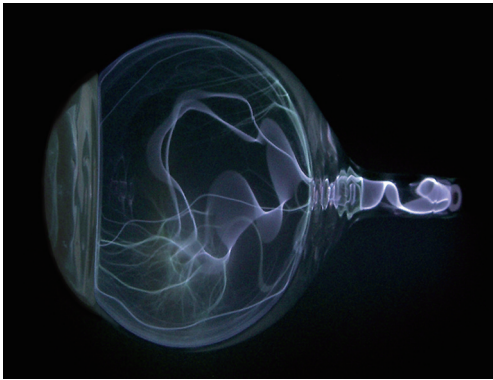


Figure 3 'Optic Nerve' 2008–2010, 12 cm × 20 cm × 12 cm, Blown glass, xenon, electrics.

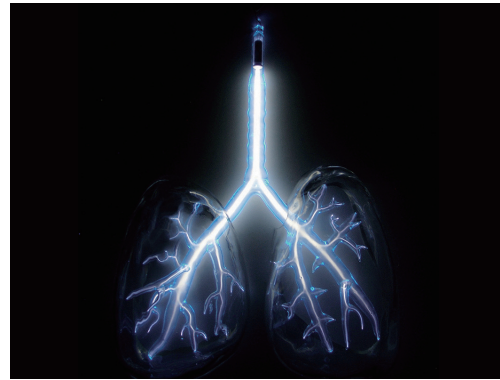


Figure 4 'Electric Lungs' 2008–2010, 40 cm × 30 cm × 10 cm, Blown glass, xenon, electrics.

installations, projection, sculpture and wall-based artwork created from a wide variety of materials and processes, drawing inspiration from scientific subject matter.

Experimenting with the physical properties of materials and the intangible nature of light, the artist explores a dialogue between the material and non-material world, often employing elements of illumination, colour and optics to evoke active energy and sensory experience. Lloyd-Jones collaborates with specialists in varying fields of science research as well as architects and design teams. Her large scale public art works are ambitious projects reinterpreting site-specific spaces through imaginative and engaging

artistic approaches.

Her artwork can be found at www.jessicalloyd-jones.com/home.

Acknowledgments

None.

Footnote

Conflicts of Interest: The author has no conflicts of interest to declare.

Cite this article as: Lloyd-Jones J. Anatomical neon. *Cardiovasc Diagn Ther* 2019;9(Suppl 1):S183–S184. doi: 10.21037/cdt.2018.12.02