

# Percutaneous ablation of colorectal lung metastases

Carole A. Ridge<sup>1</sup>, Stephen B. Solomon<sup>2</sup>

<sup>1</sup>Department of Radiology, Mater Misericordiae University Hospital, Dublin 7, Ireland; <sup>2</sup>Department of Radiology, Memorial Sloan-Kettering Cancer Center, New York, NY 10065, USA

**Contributions:** (I) Conception and design: All authors; (II) Administrative support: None; (III) Provision of study materials or patients: All authors; (IV) Collection and assembly of data: All authors; (V) Data analysis and interpretation: None; (VI) Manuscript writing: All authors; (VII) Final approval of manuscript: All authors.

**Correspondence to:** Carole A. Ridge, FFRRCSI. Department of Radiology, Mater Misericordiae University Hospital, Eccles St., Dublin 7, Ireland. Email: cridge@mater.ie.

**Abstract:** Lung metastasectomy can prolong survival in patients with metastatic colorectal carcinoma. Thermal ablation offers a potential solution with similar reported survival outcomes. It has minimal effect on pulmonary function, or quality of life, can be repeated, and may be considered more acceptable to patients because of the associated shorter hospital stay and recovery. This review describes the indications, technique, reported outcomes, complications and radiologic appearances after thermal ablation of colorectal lung metastases.

**Keywords:** Ablation techniques; colorectal neoplasms; neoplasm metastasis; radiology; interventional

Submitted Mar 23, 2015. Accepted for publication Aug 04, 2015.

doi: 10.3978/j.issn.2078-6891.2015.095

**View this article at:** <http://dx.doi.org/10.3978/j.issn.2078-6891.2015.095>

## Introduction

Lung metastasectomy can prolong survival in patients with metastatic colorectal carcinoma. Reported median survival ranges from 35-50 months (1,2). Reported 5-year survival rates after surgical resection range from 36-67.8% (3-5). However, many patients are considered ineligible for surgical metastasectomy due to medical co-morbidities or prior metastasectomy, rendering further resection technically challenging. Furthermore, with the possibility of additional future metastases, lung function preservation and quality of life should be a priority. In all of these clinical scenarios, thermal ablation offers a potential solution with similar reported median survival ranging from 33-46 months (6-8). It has minimal effect on pulmonary function or quality of life (9), can be repeated, and may be considered more acceptable to patients because of the associated short hospital stay and post-procedure recovery. Lastly, chemotherapy treatment does not need to be interrupted while thermal ablation is performed (*Figure 1*).

Heat-based ablation was first described in normal liver in 1990 using a modified Bovie knife and radiofrequency

energy (10,11). Subsequent descriptions of successful thermal liver tumor ablation prompted further study of using the technique in other organs (12,13). Its successful use in lung tumors in humans was described in patients with inoperable non-small cell lung carcinoma in 2000 (14). These initial studies included a heterogeneous patient population with primary and secondary lung malignancies but provided the initial impetus to study thermal ablation as a safe method of treating inoperable lung tumors and metastases. Radiofrequency ablation (RFA) has since been joined by other heat based therapies: microwave and cryoablation.

## Mechanism of action

Each ablation technique mechanism of action is described below in brief. For a more detailed description, the interested reader is directed to the following review articles on the topic (15-17).

During RFA, molecular friction is created when an electrical current is delivered to tumor cells surrounding the RFA probe tip, thus creating a rise in tissue temperature

#### Thermal ablation

1. Has minimal effect on pulmonary function
2. Has minimal effect on quality of life
3. Does not require interruption of chemotherapy

**Figure 1** Benefits of thermal ablation.

named the Joule effect (15). A temperature at the electrode tip above 60 °C will achieve cell death (18,19). Tissue surrounding the electrode is heated by electrical conduction. The adjacent tissue is then heated by thermal conduction. Thermal conduction is impeded by tissue charring which can occur if ablation temperatures are too high (e.g., above 95 °C). Tissue charring decreases ablation effectiveness (20-22). In order to avoid tissue charring, technical adaptations have been made to ablation probes including the use of multiple ablation probes (23), internally cooled probes (24) and pulsed RFA ablation systems (25).

When microwave energy is applied to human tissue, water molecules in the tissue adjacent to the probe tip continuously realign with the applied field leading to an increase in local tissue temperatures (26). Tissue destruction occurs when tissues are heated to lethal temperatures. Temperature at the probe tip can be as high as 150 °C. Microwave power penetrates tissues of low electric conductivity such as lung and charred tissue, the latter feature confers an advantage over RFA in the lungs.

Cryoablation involves rapid tumor cooling causing cell death at temperatures in the range of -50 °C. This occurs as a result of the rapid expansion of argon released from the ablation probe, named the Joule-Thompson effect, causing cooling of the adjacent tissues. Sequential warming and cooling augments the degree of cellular damage (17,27). The ice ball that forms during freezing is visible on computed tomography (CT), allowing the operator to closely monitor the ablation zone (28).

### Indications for thermal ablation of colorectal lung metastases

Patients with colorectal cancer lung oligometastases can benefit from surgical metastasectomy (3-5). Similarly, these patients benefit from curative thermal ablation. Patients with tumor size smaller than 3 cm (29) and a favorable biologic profile are shown to have a lower rate of local tumor progression and cancer specific survival after thermal ablation than those with tumors larger than 3 cm and

unfavorable biologic profile, including Ki67 positivity, a marker for cell proliferation (30). The 2012 Cardiovascular and Interventional Radiological Society of Europe (CIRSE) standards of practice based on expert consensus (31) state that the maximum number of lung metastases that may be ablated is not clearly defined with most centers treating patients with five or fewer metastases. Combination therapies are suggested as an option for improving chance of cure and sparing lung function including thermal ablation combined with surgery (32) or chemotherapy (33). Patients should be assessed by an interdisciplinary team and the maximum tumor diameter should not exceed 3 cm in diameter (31). A recent expert consensus document suggests that if curative ablation is intended, a tumor number cutoff of  $\leq 3$  in the case of unilateral metastases and  $\leq 5$  in the case of bilateral metastases be employed, echoing the CIRSE guidelines which suggest a cutoff of five metastases in total (31). Finally, the guideline suggests that no metastasis should be greater than 3 cm if multiple (34).

One interesting application of thermal ablation has been to render the patient free of active disease and thus permit a chemotherapy holiday while receiving rigorous imaging surveillance. Such chemotherapy breaks are reported to be possible without disease progression for durations of up to 20 months (35). An approach previously described in the case of thermal ablation of liver metastases is known as the “test of time” and may have an application in lung metastasis ablation (36). Selected resectable patients with limited disease suitable for thermal ablation undergo percutaneous ablation and imaging surveillance with the intention to undergo metastasectomy if thermal ablation does not lead to tumor control. This delayed period allows the biology of disease to declare itself. Patients completely treated by ablation, in addition to those who develop unresectable metastases under surveillance, are spared unnecessary surgery (37).

Relative contraindications for treatment include underlying interstitial disease, such as pulmonary fibrosis due to the risk of severe pulmonary failure, and coagulopathies (38-41). Lesions within 1 cm of sensitive structures such as the trachea, main bronchi, esophagus and central vessels are at higher risk of complications and may often be incompletely ablated due to heat sink effect (42).

### Complications

Major complications as a result of thermal ablation are rare. Complications after lung RFA are reported to occur in 9.8%

**Table 1** Patients' outcomes after thermal ablation of colorectal lung metastasis

| Authors                    | Year of publication | Modality      | Patients | Mean size (SD) cm | Lesion number | Mean follow-up (months) | 1-year survival (%) | 2-year survival (%) | 3-year survival (%) | 5-year survival (%) | Median survival (months) | 2-year CSS (%) | Local progression, N (%)   |
|----------------------------|---------------------|---------------|----------|-------------------|---------------|-------------------------|---------------------|---------------------|---------------------|---------------------|--------------------------|----------------|----------------------------|
| Yamakado <i>et al.</i> (6) | 2009                | RFA           | 78       | NR                | 198           | 24.6±7.6                | 83.9                | NR                  | 56.1                | 34.9                | 38                       | NR             | 11/78 (14.1)               |
| Yan <i>et al.</i> (29)     | 2006                | RFA           | 55       | NR                | NR            | NR                      | 85                  | NR                  | 46                  | NR                  | 33                       | NR             | 21/55 (38.0)               |
| Lencioni <i>et al.</i> (9) | 2008                | RFA           | 53       | NR                | NR            | 24                      | 89                  | 66                  | NR                  | NR                  | NR                       | 68             | NR                         |
| Vogl <i>et al.</i> (50)    | 2011                | MWA           | 40       | NR                | 58            | 9                       | NR                  | NR                  | NR                  | NR                  | NR                       | NR             | NR                         |
| Yamauchi <i>et al.</i> (8) | 2011                | Cryo-ablation | 24       | 1.3 (±0.7)        | 55            | 40                      | 91                  | NR                  | 59.6                | NR                  | 43                       | NR             | 17/55 (26.0)               |
| Petre <i>et al.</i> (35)   | 2013                | RFA           | 45       | NR* (0.4-3.5)     | 69            | 18                      | 95                  | NR                  | 50                  | NR                  | 46                       | NR             | 9/69 (13.0)                |
| Gillams <i>et al.</i> (7)  | 2013                | RFA           | 122      | 1.7 (0.5-4)       | 398           | NR                      | NR                  | NR                  | 57                  | NR                  | 41                       | NR             | 52/268 (19.0) <sup>#</sup> |

Data is reported on a per lesion basis rather than a per patient basis. <sup>#</sup>, 268 tumors with more than 6 months' imaging follow-up were included in recurrence analysis; CSS, cancer specific survival; RFA, radiofrequency ablation; NR, not reported; MWA, microwave ablation.

of patients; the most frequently reported complications include pleuritis, pneumonia, abscess, hemorrhage, and refractory pneumothorax requiring pleurodesis (40). Major complications are rare and include bronchopleural fistula, tumor seeding, and nerve (0.3%) (43) or diaphragmatic injury. Self-limiting rib fractures after ablation of tumor located close to the chest wall has a reported incidence of 13.5% of patients treated with RFA and MWA (44). Similar complication rates including self-limiting pneumothorax and pneumothorax requiring chest tube insertion are described after microwave and cryoablation (45). Skin burns are rare with an incidence of 0.3% (45). In terms of lung function, Lencioni and colleagues report a mild change at 3 month's follow-up in forced vital capacity (FVC) of +13.7%, and forced expiratory volume in 1 second (FEV<sub>1</sub>) of -5.4% (9). This compares well to the surgical metastasectomy literature: one study of 27 patients after surgical resection of metastases describes a mild loss of pulmonary function including a decline in FVC of -15.2% and FEV<sub>1</sub> of -16.3% (46).

The reported mortality rate after lung tumor RFA is 0.4% (47) and is slightly less than that reported after surgical metastasectomy (1.4-2.4%) (48). Careful patient selection can minimize the risk of complications. For example, in the largest case series reporting complications

after RFA, previous systemic chemotherapy was a risk factor for pleuritis, while prior external beam radiotherapy and advanced age were risk factors for pneumonia (49). Patients with emphysema have a greater predilection for lung abscess and refractory pneumothorax. Serum platelet count (≤180,000 cells/μL) and tumor size >3 cm are risk factors for hemorrhage (49).

### Reported outcomes

The literature analyzing outcomes after thermal ablation of colorectal metastases is limited by study size and patient heterogeneity. The majority of published literature describes outcomes after RFA of colorectal carcinoma lung metastases (4,6,7,29,35). Two studies report outcomes in patients after cryoablation and microwave respectively, although the latter does not report specific outcomes for patients with colorectal carcinoma lung metastases (8,50). Allowing for these limitations, the findings of 7 studies analyzing outcomes of 417 patients over a mean follow-up period range of 9-40 months after ablation of colorectal cancer lung metastases (*Table 1*) report 1-year survival ranging from 83.9-95%, and 3-year survival ranging from 46-59.6% (6,8,9,29,35). A 5-year survival of 34.9% is

**Table 2** Patient outcomes after surgical resection of colorectal lung metastasis

| Authors                      | Year of publication | Patients | Tumor size               | Lesion number  | Median follow-up (months) | 1-year survival (%) | 3-year survival (%) | 5-year survival (%) | Median survival (months) |
|------------------------------|---------------------|----------|--------------------------|----------------|---------------------------|---------------------|---------------------|---------------------|--------------------------|
| Meimarakis <i>et al.</i> (1) | 2014                | 77       | <3 cm: 108;<br>≥3 cm: 48 | 1: 88; ≥2: 68  | 35.2                      | 88.8                | 52.1                | 35.2                | 35.2                     |
| Zampino <i>et al.</i> (2)    | 2014                | 199      | NR                       | 1: 95; ≥2: 98  | 48                        | NR                  | NR                  | 43                  | 50                       |
| Watanabe <i>et al.</i> (3)   | 2009                | 113      | 1.8 <sup>^</sup>         | 1: 83; ≥2: 30  | 49                        | NR                  | 80.4                | 67.8                | NR                       |
| Mori <i>et al.</i> (4)       | 1991                | 35       | NR                       | 1: 22; ≥2: 13  | NR                        | NR                  | NR                  | 38                  | NR                       |
| Saito <i>et al.</i> (5)      | 2002                | 165      | 2.5                      | 1: 104; ≥2: 61 | 56.5                      | NR                  | NR                  | 39.6                | NR                       |

<sup>^</sup>, median value. NR, not reported; CSS, cancer specific survival.

reported by one group (6). Reported median survival ranges from 33–46 months (6–8,29,35). Reported local recurrence rates range from 13–38% (6–8,29,35). These findings are comparable to reported surgical outcomes which state that median survival ranges from 35–50 months (1,2). Surgical 5-year survival rates after surgical resection range from 36–67.8% (3–5). Comparable outcomes after thermal ablation and surgical resection are described in the literature. In both patient groups, there are similarities in the number of metastases treated (on average 1–2 per patient) and tumor size (typically <3 cm). However, a like for like comparison is limited by the nuances of surgical versus thermal ablation techniques and the inherent differences in the selected patient populations (Table 2). For example, there is a broad variety of surgical approaches depending on tumor size and number ranging from wedge resection to pneumonectomy, whereas thermal ablation involves only one approach. Secondly, the surgical literature concentrates on 5-year survival data, reflecting the life expectancy of patients eligible for surgical intervention. In contrast, the ablation literature is more likely to report 1–3 year survival data, due to the multiple co-morbidities inherent to this patient population. Five-year survival after thermal ablation, when reported, is less favorable than that reported in the surgical literature.

### Outcome prognostic factors

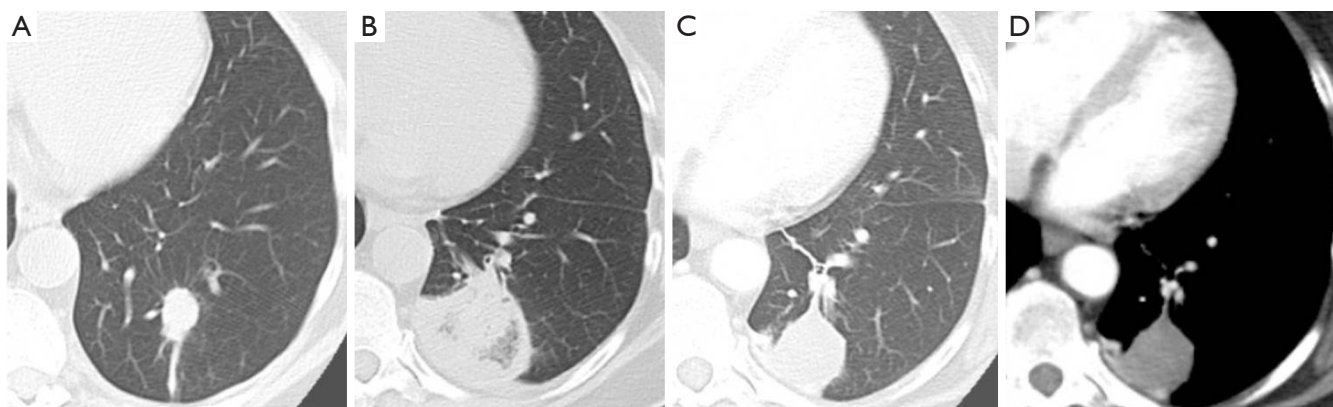
In a prospective study of 293 patients with colorectal cancer lung metastases treatment with RFA, tumor size >2 cm and a number of metastases ≥3 was significantly associated with overall survival (51). Clinical factors such as the presence

of treated liver metastases, and a history of prior lung surgery has no impact on survival after RFA of colorectal cancer lung metastases (7). The administration of prior or concomitant chemotherapy has a variable reported impact on outcome with one study indicating that it does not affect survival (8) and another stating that it confers a survival advantage (33). Carcinoembryonic antigen level greater than 5 ng/mL is associated with decreased local tumor progression free survival (29).

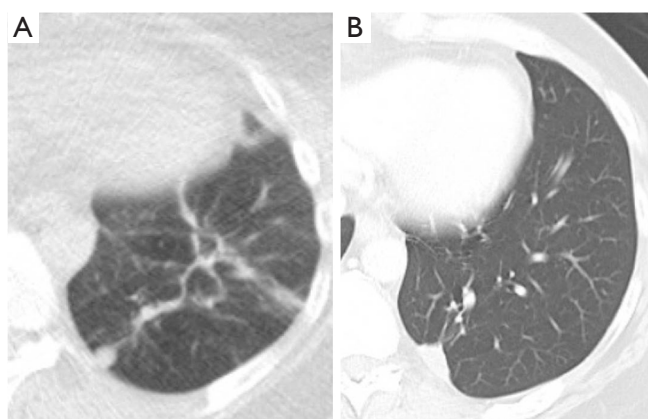
### Imaging surveillance

In clinical practice, PET-CT and/or CT are typically performed within two months of thermal ablation, to establish a new baseline for surveillance. In the initial imaging after ablation, the treated nodule always appears larger than the original tumor size as the ablation zone encompasses a margin around the tumor. Over time, this ablation zone should decrease in size. The patient undergoes imaging every three months for a year, and annual surveillance thereafter. An initial perilesional ground glass halo on CT during the first 2 months is likely due to inflammation which decreases over time. The expected CT appearances after 6 months include: (I) a residual nodule which is stable or decreasing in size (Figure 2); (II) an elongated linear nodule due to fibrosis; (III) atelectasis (Figure 3); or (IV) cavitation. Complete disappearance of the initial nodule is rarely observed (52).

PET-CT at 24 hours and at 1 month after ablation can exhibit tracer activity at the ablation site despite adequate treatment, due to inflammation. Tracer uptake is expected to resolve by 3 months after ablation (53). The absence of



**Figure 2** Axial CT images of a 62-year-old patient with a left lower lobe adenocarcinoma (A). Typical perilesional concentric rings of varying density, often referred to as the cockade phenomenon, are observed on CT 1 month after the procedure (B). Contrast enhanced CT performed 2 years later demonstrates a rounded low attenuation nodule without focal enhancement or enlargement (C,D) since the initial post ablation CT. CT, computed tomography.



**Figure 3** Expected CT appearances after thermal ablation. (A) Axial CT images of a 73-year-old patient with a left lower lobe adenocarcinoma; (B) at 3 months after radiofrequency ablation atelectasis is seen at the ablation zone. CT, computed tomography.

tracer activity at the site of ablation on PET-CT at 6 months after ablation has been shown to correlate better with clinical outcome at 1 year than PET-CT performed within 4 days of ablation (54). The expected early PET-CT appearance is that of a relatively uniform ring of low level FDG activity (about the same as mediastinal blood pool activity) and central photopenia, a finding which may persist until 6 months and should resolve by 12 months (*Figure 4*) (55).

Residual disease or recurrence of disease may be present if there is contrast enhancement in the ablation zone,

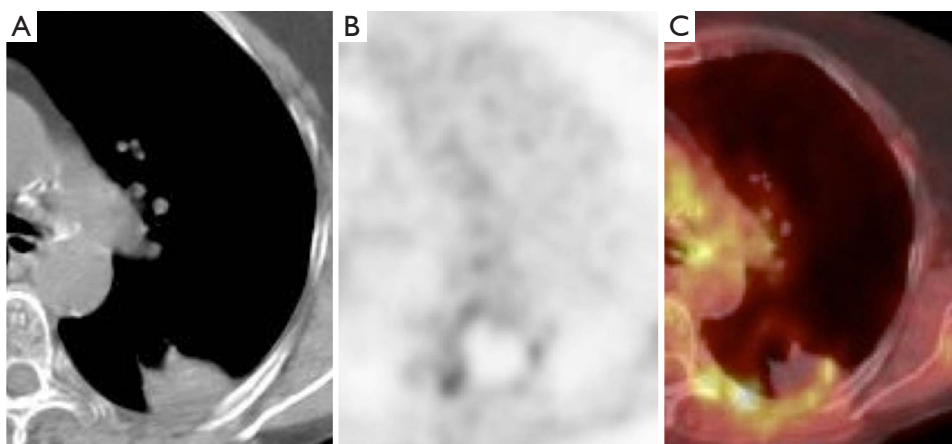
peripheral nodular growth, a change within the ablation zone from ground-glass to solid opacity, regional or distant lymph node enlargement, new sites of intrathoracic disease, or new extrathoracic disease; and increased metabolic activity centrally or in a nodular pattern at the ablation site on PET-CT more than 3 months after ablation (56).

### Thermal ablation in combination with adjunctive therapies

Combined multimodality therapy using thermal ablation and radiation or chemotherapy may synergistically result in an improved survival compared with either modality alone. A study of 21 patients analyzing multimodality therapy reported a 3-year survival of 87.5% after multimodality therapy including RFA, radiotherapy and chemotherapy compared to 33.3% using chemotherapy alone (57).

### Conclusions

Thermal ablation is an effective therapy for colorectal carcinoma lung metastases that controls disease while preserving adjacent normal lung and quality of life (9), can be repeated, and may be considered more acceptable to patients because of the associated shorter hospital stay and recovery. Patient selection is based on patient and lesion characteristics and appropriate patient selection substantially influences survival. The ideal candidate for thermal ablation has 5 metastases or fewer, with an individual lung metastasis size



**Figure 4** Expected PET-CT appearances after thermal ablation. Unenhanced CT (A), fused (B) and unfused PET-CT (C) images of a left upper lobe adenocarcinoma 4 months after radiofrequency ablation exhibit a halo of mild peripheral tracer uptake in the ablation zone with central photopenia, referred to as a bullseye appearance, indicating successful ablation. CT, computed tomography.

of <3 cm. A lesion location distant from sensitive structures and large vessels is ideal to minimize complications and avoid local recurrence, respectively. One and 3 year survival after thermal ablation of unresectable colorectal carcinoma lung metastases are good and therefore thermal ablation offers a lung-preserving therapeutic alternative to patients with medical co-morbidities.

### Acknowledgements

None.

### Footnote

*Conflicts of Interest:* The authors have no conflicts of interest to declare.

### References

1. Meimarakis G, Spelsberg F, Angele M, et al. Resection of pulmonary metastases from colon and rectal cancer: factors to predict survival differ regarding to the origin of the primary tumor. *Ann Surg Oncol* 2014;21:2563-72.
2. Zampino MG, Maisonneuve P, Ravenda PS, et al. Lung metastases from colorectal cancer: analysis of prognostic factors in a single institution study. *Ann Thorac Surg* 2014;98:1238-45.
3. Watanabe K, Nagai K, Kobayashi A, et al. Factors influencing survival after complete resection of pulmonary metastases from colorectal cancer. *Br J Surg* 2009;96:1058-65.
4. Mori M, Tomoda H, Ishida T, et al. Surgical resection of pulmonary metastases from colorectal adenocarcinoma. Special reference to repeated pulmonary resections. *Arch Surg* 1991;126:1297-301, discussion 1302.
5. Saito Y, Omiya H, Kohno K, et al. Pulmonary metastasectomy for 165 patients with colorectal carcinoma: a prognostic assessment. *J Thorac Cardiovasc Surg* 2002;124:1007-13.
6. Yamakado K, Inoue Y, Takao M, et al. Long-term results of radiofrequency ablation in colorectal lung metastases: single center experience. *Oncol Rep* 2009;22:885-91.
7. Gillams A, Khan Z, Osborn P, et al. Survival after radiofrequency ablation in 122 patients with inoperable colorectal lung metastases. *Cardiovasc Intervent Radiol* 2013;36:724-30.
8. Yamauchi Y, Izumi Y, Hashimoto K, et al. Percutaneous cryoablation for the treatment of medically inoperable stage I non-small cell lung cancer. *PLoS One* 2012;7:e33223.
9. Lencioni R, Crocetti L, Cioni R, et al. Response to radiofrequency ablation of pulmonary tumours: a prospective, intention-to-treat, multicentre clinical trial (the RAPTURE study). *Lancet Oncol* 2008;9:621-8.
10. McGahan JP, Browning PD, Brock JM, et al. Hepatic ablation using radiofrequency electrocautery. *Invest Radiol* 1990;25:267-70.
11. Rossi S, Fornari F, Pathies C, et al. Thermal lesions induced b480 KHz localized current field in guinea pig and pig liver. *Tumori* 1990;76:54-7.
12. Buscarini L, Rossi S, Fornari F, et al. Laparoscopic

- ablation of liver adenoma by radiofrequency electrocautery. *Gastrointest Endosc* 1995;41:68-70.
13. Fraker DL. Percutaneous radiofrequency interstitial thermal ablation. *Cancer J Sci Am* 1995;1:30-1.
  14. Dupuy DE, Zagoria RJ, Akerley W, et al. Percutaneous radiofrequency ablation of malignancies in the lung. *AJR Am J Roentgenol* 2000;174:57-9.
  15. Hong K, Georgiades C. Radiofrequency ablation: mechanism of action and devices. *J Vasc Interv Radiol* 2010;21:S179-86.
  16. Lubner MG, Brace CL, Hinshaw JL, et al. Microwave tumor ablation: mechanism of action, clinical results, and devices. *J Vasc Interv Radiol* 2010;21:S192-203.
  17. Erinjeri JP, Clark TW. Cryoablation: mechanism of action and devices. *J Vasc Interv Radiol* 2010;21:S187-91.
  18. Goldberg SN, Gazelle GS, Mueller PR. Thermal ablation therapy for focal malignancies: a unified approach to underlying principles, techniques, and diagnostic imaging guidance. *AJR Am J Roentgenol* 2000;174:323-31.
  19. Sapareto SA, Dewey WC. Thermal dose determination in cancer therapy. *Int J Radiat Oncol Biol Phys* 1984;10:787-800.
  20. Cosman ER, Nashold BS, Ovelman-Levitt J. Theoretical aspects of radiofrequency lesions in the dorsal root entry zone. *Neurosurgery* 1984;15:945-50.
  21. Goldberg SN, Gazelle GS, Dawson SL, et al. Tissue ablation with radiofrequency: effect of probe size, gauge, duration, and temperature on lesion volume. *Acad Radiol* 1995;2:399-404.
  22. Brace CL. Radiofrequency and microwave ablation of the liver, lung, kidney, and bone: what are the differences? *Curr Probl Diagn Radiol* 2009;38:135-43.
  23. Siperstein AE, Rogers SJ, Hansen PD, et al. Laparoscopic thermal ablation of hepatic neuroendocrine tumor metastases. *Surgery* 1997;122:1147-54; discussion 1154-5.
  24. Goldberg SN, Gazelle GS, Solbiati L, et al. Radiofrequency tissue ablation: increased lesion diameter with a perfusion electrode. *Acad Radiol* 1996;3:636-44.
  25. Goldberg SN, Stein MC, Gazelle GS, et al. Percutaneous radiofrequency tissue ablation: optimization of pulsed-radiofrequency technique to increase coagulation necrosis. *J Vasc Interv Radiol* 1999;10:907-16.
  26. Ahmed M, Brace CL, Lee FT Jr, et al. Principles of and advances in percutaneous ablation. *Radiology* 2011;258:351-69.
  27. Sharma A, Moore WH, Lanuti M, et al. How I do it: radiofrequency ablation and cryoablation of lung tumors. *J Thorac Imaging* 2011;26:162-74.
  28. Ahrar K, Littrup PJ. Is cryotherapy the optimal technology for ablation of lung tumors? *J Vasc Interv Radiol* 2012;23:303-5.
  29. Yan TD, King J, Sjarif A, et al. Percutaneous radiofrequency ablation of pulmonary metastases from colorectal carcinoma: prognostic determinants for survival. *Ann Surg Oncol* 2006;13:1529-37.
  30. Sofocleous CT, Garg SK, Cohen P, et al. Ki 67 is an independent predictive biomarker of cancer specific and local recurrence-free survival after lung tumor ablation. *Ann Surg Oncol* 2013;20:S676-83.
  31. Pereira PL, Masala S; Cardiovascular and Interventional Radiological Society of Europe (CIRSE). Standards of practice: guidelines for thermal ablation of primary and secondary lung tumors. *Cardiovasc Intervent Radiol* 2012;35:247-54.
  32. Sano Y, Kanazawa S, Mimura H, et al. A novel strategy for treatment of metastatic pulmonary tumors: radiofrequency ablation in conjunction with surgery. *J Thorac Oncol* 2008;3:283-8.
  33. Chua TC, Thornbury K, Saxena A, et al. Radiofrequency ablation as an adjunct to systemic therapy for colorectal pulmonary metastases. *Cancer* 2010;116:2106-14.
  34. Ye X, Fan W; Minimally Invasive and Comprehensive Treatment of Lung Cancer Branch, et al. Expert consensus for thermal ablation of primary and metastatic lung tumors. *Zhongguo Fei Ai Za Zhi* 2014;17:294-301.
  35. Petre EN, Jia X, Thornton RH, et al. Treatment of pulmonary colorectal metastases by radiofrequency ablation. *Clin Colorectal Cancer* 2013;12:37-44.
  36. Livraghi T, Solbiati L, Meloni F, et al. Percutaneous radiofrequency ablation of liver metastases in potential candidates for resection: the "test-of-time approach". *Cancer* 2003;97:3027-35.
  37. Petre EN, Sofocleous CT, Solomon SB. Ablative and Catheter-Directed Therapies for Colorectal Liver and Lung Metastases. *Hematol Oncol Clin North Am* 2015;29:117-33.
  38. Percutaneous radiofrequency ablation for primary or secondary lung cancers. Available online: <http://www.nice.org.uk/guidance/ipg372/chapter/2-the-procedure>. Accessed January 21, 2015.
  39. Alexander ES, Dupuy DE. Lung Cancer Ablation Technologies and Techniques. *Semin Intervent Radiol* 2013;30:141-50.
  40. Carrafiello G, Mangini M, Fontana F, et al. Complications of microwave and radiofrequency lung ablation: personal experience and review of the literature. *Radiol Med*

- 2012;117:201-13.
41. Rose SC, Dupuy DE, Gervais DA, et al. Research reporting standards for percutaneous thermal ablation of lung neoplasms. *J Vasc Interv Radiol* 2009;20:S474-85.
  42. Bargellini I, Bozzi E, Cioni R, et al. Radiofrequency ablation of lung tumours. *Insights Into Imaging* 2011;2:567-76.
  43. Palussière J, Canella M, Cornelis F, et al. Retrospective review of thoracic neural damage during lung ablation - what the interventional radiologist needs to know about neural thoracic anatomy. *Cardiovasc Intervent Radiol* 2013;36:1602-13.
  44. Alexander ES, Hankins CA, Machan JT, et al. Rib fractures after percutaneous radiofrequency and microwave ablation of lung tumors: incidence and relevance. *Radiology* 2013;266:971-8.
  45. Wolf FJ, Grand DJ, Machan JT, et al. Microwave ablation of lung malignancies: effectiveness, CT findings, and safety in 50 patients. *Radiology* 2008;247:871-9.
  46. Welter S, Cheufou D, Zahin M, et al. Short- and Mid-Term Changes in Lung Function after Bilateral Pulmonary Metastasectomy. *Thorac Cardiovasc Surg* 2014. [Epub ahead of print].
  47. Steinke K, Sewell PE, Dupuy D, et al. Pulmonary radiofrequency ablation—an international study survey. *Anticancer Res* 2004;24:339-43.
  48. Schlijper RC, Grutters JP, Houben R, et al. What to choose as radical local treatment for lung metastases from colo-rectal cancer: surgery or radiofrequency ablation? *Cancer Treat Rev* 2014;40:60-7.
  49. Kashima M, Yamakado K, Takaki H, et al. Complications after 1000 lung radiofrequency ablation sessions in 420 patients: a single center's experiences. *AJR Am J Roentgenol* 2011;197:W576-80.
  50. Vogl TJ, Naguib NN, Gruber-Rouh T, et al. Microwave ablation therapy: clinical utility in treatment of pulmonary metastases. *Radiology* 2011;261:643-51.
  51. de Baère T, Aupérin A, Deschamps F, et al. Radiofrequency ablation is a valid treatment option for lung metastases: experience in 566 patients with 1037 metastases. *Ann Oncol* 2015;26:987-91.
  52. Palussière J, Marcet B, Descat E, et al. Lung tumors treated with percutaneous radiofrequency ablation: computed tomography imaging follow-up. *Cardiovasc Intervent Radiol* 2011;34:989-97.
  53. Deandreis D, Leboulleux S, Dromain C, et al. Role of FDG PET/CT and chest CT in the follow-up of lung lesions treated with radiofrequency ablation. *Radiology* 2011;258:270-6.
  54. Yoo DC, Dupuy DE, Hillman SL, et al. Radiofrequency ablation of medically inoperable stage IA non-small cell lung cancer: are early post treatment PET findings predictive of treatment outcome? *AJR Am J Roentgenol* 2011;197:334-40.
  55. Sharma A, Lanuti M, He W, et al. Increase in fluorodeoxyglucose positron emission tomography activity following complete radiofrequency ablation of lung tumors. *J Comput Assist Tomogr* 2013;37:9-14.
  56. Abtin FG, Eradat J, Gutierrez AJ, et al. Radiofrequency ablation of lung tumors: imaging features of the postablation zone. *Radiographics* 2012;32:947-69.
  57. Inoue Y, Miki C, Hiro J, et al. Improved survival using multi-modality therapy in patients with lung metastases from colorectal cancer: a preliminary study. *Oncol Rep* 2005;14:1571-6.

**Cite this article as:** Ridge CA, Solomon SB. Percutaneous ablation of colorectal lung metastases. *J Gastrointest Oncol* 2015;6(6):685-692. doi: 10.3978/j.issn.2078-6891.2015.095