



Changes in immune markers in tumor-free lymph node and peripheral blood of malignant head and neck cancer patients

Soon-Hyun Ahn, Sung Joon Park, Hanaro Park, Joo Yeon Choi, Seong Dong Kim, Sungjun Han, Eun Jae Chung, Woo-Jin Jeong

Department of Otorhinolaryngology-Head and Neck Surgery, Seoul National University College of Medicine, Seoul National University Hospital, Seoul, South Korea

Contributions: (I) Conception and design: SH Ahn; (II) Administrative support: SH Ahn; (III) Provision of study materials or patients: SH Ahn, EJ Chung, WJ Jeong; (IV) Collection and assembly of data: H Park, SJ Park, S Han; (V) Data analysis and interpretation: SH Ahn, JY Choi, SJ Park; (VI) Manuscript writing: All authors; (VII) Final approval of manuscript: All authors.

Correspondence to: Soon-Hyun Ahn, MD, PhD. Professor, Department of Otorhinolaryngology-Head and Neck Surgery, Seoul National University Hospital, 101, Daehak-ro, Jongno-gu, Seoul 03080, South Korea. Email: ahnsh30@snu.ac.kr.

Background: Immunoediting theory, which explains the balance between the host immunity and cancer cells, could suggest a new way to reduce the recurrence of cancer. This study aimed to compare changes in immune cells in tumor-free lymph node and peripheral blood according to their malignancy, disease status, and prognosis.

Methods: From October 2016 to August 2017, 26 malignant and 14 benign cases were enrolled, and the tumor-free lymph node and peripheral blood were harvested during the surgery. The proportions of cluster of differentiation 4 (CD4), CD8, CD19, CD33, CD40, and CD40 ligand (CD40L) expression and cytokine levels in the serum were compared between the malignant and benign patients. Furthermore, among the malignant group, the changes occurring due to the disease progression or recurrence were evaluated.

Results: In the malignant patients, a significantly decreased proportion of cells expressing CD8 and CD40 in the peripheral blood was observed compared to benign patients. In the advanced stage (stage III or IV) and in patients with extracapsular spread, significant decrease in CD33 cells in tumor-free lymph nodes could be observed. On performing a survival analysis based on the recurrence, patients with interferon- γ (IFN γ) level greater than 16 pg/mL exhibited significantly higher recurrence rate, and this higher level of IFN γ was associated with distant metastasis.

Conclusions: Immune markers exhibiting clinical significance differ from each other based on the comparison between benign and malignant groups, between advanced and early cancer, and between recurrence and nonrecurrence. And this result suggests that research in the immune system is likely to have an important effect on future treatment.

Keywords: Head and neck cancer; cancer immunomodulation; lymph node; blood; immune

Submitted Mar 04, 2019. Accepted for publication Jul 09, 2019.

doi: 10.21037/tcr.2019.07.35

View this article at: <http://dx.doi.org/10.21037/tcr.2019.07.35>

Introduction

Many prognostic factors for head and neck cancers are still emerging with new techniques (1). Most of these studies emphasize on the tumor tissue, and are directed towards identifying biomarkers for cancer cells or changes in the microenvironment surrounding the cancer cells in

primary tumor tissue. However, there is a limit to reducing recurrence by studying only the tumor characteristics, and the role of immune system is important not only in the microenvironment but also in systematic conditions. The immunoediting theory can appropriately explain the balance between the immune system and cancer invasiveness (2).

According to this theory, we previously evaluated the tumor-free lymph node in a neck dissection specimen retrospectively to find the prognostic markers, and the decreased cluster of differentiation 40 ligand (CD40L) expression indicated significant correlation with high recurrence rate (3). In accordance with the previous study, we tried to assess the differences in the systemic immune system via prospective evaluation of peripheral blood and tumor-free lymph node between the malignant and benign cancer patients and also by considering the disease progression or recurrence.

Methods

Patients

Tumor-free lymph nodes and peripheral blood were collected during surgery, prospectively, from October 2016 to August 2017. This prospective study protocol was approved by the Institutional Review Board of Seoul National University Bundang Hospital (B-1512-328-305). The patients who decided to enroll gave their informed consent. Patients who underwent surgery for head and neck malignancy including neck dissection, elective or therapeutic, without previous treatment history, were included in the malignant group. The tumor-free lymph node was harvested at the farthest level from the primary disease. In the benign group, the patients who underwent surgery for parotid or submandibular gland tumor were enrolled, and during surgery, the nearest lymph node that could be harvested by minimal dissection without further skin incision was selected. Patients who were diagnosed as malignant postoperatively, were excluded. In total, 5–10 cc of peripheral blood was collected from the forearm after inducing general anesthesia. Age, sex, stage, p16 expression, extracapsular spread, and recurrence were included as independent variables.

Flow cytometry analysis

Blood was centrifuged and serum was separated and preserved at -70°C in a refrigerator for cytokine analysis. After hemolysis of red blood cell (RBC), the precipitate was suspended in flow cytometry buffer solution. The harvested lymph node was mechanically dissociated, and a single cell suspension was made with 40 μm nylon cell strainer. Anti-human fluorescein isothiocyanate (FITC) CD4, phycoerythrin (PE) CD40L, PerCP-Cy5.5 CD8,

allophycocyanin (APC) CD40, FITC CD33, and PerCP-Cy5.5 CD19 (BD Bioscience, CA, USA) were used for staining.

Cytokine analysis

Interferon- γ (IFN γ), interleukin 1 β (IL1 β), IL2, IL4, IL5, IL6, IL10, IL12, soluble CD40 ligand (sCD40L), and tumor necrosis factor α (TNF α) levels were measured using human cytokine/chemokine magnetic bead panel (EMD Millipore Corp, MI, USA) from stored serum of the collected blood.

Statistical analysis

The flow cytometry result was analyzed via FCS express 5 flow (De Novo software, CA, USA). All statistical analyses were performed using the Statistical Package for the Social Sciences (SPSS) for Windows version 20.0 (SPSS Inc.; Chicago, IL, USA). Independent sample *t*-test, analysis of variance (ANOVA), and Kaplan-Meier survival analysis were performed.

Results

A total of 29 malignant and 21 benign patients were enrolled during this period. One patient who was diagnosed with acinic cell carcinoma after surgery was excluded from the benign group. Three patients from the malignant group and six patients from the benign group were excluded due to insufficient tissue sample for the experiment. Eventually, 26 malignant and 14 benign cases were included. The malignant group included squamous cell carcinoma of head and neck, and the benign group included pleomorphic adenoma or Warthin's tumor. The age of patients was significantly higher in the malignant group compared to that in the benign group. Average follow-up was at 14.7 months for the malignant group and *Table 1* lists the other demographic findings.

Figure 1 presents the flow cytometric dot plotting of peripheral blood and lymph node. The proportion of upper left and lower right quadrant was used as a value of each positively stained cell. As the patients in the malignant group were significantly elder than those in the benign group, correlation between the proportion of immune cell and age was evaluated using bivariate Pearson's correlation, and CD8 in blood and lymph node exhibited significant correlation with age (Pearson's correlation coefficient was

Table 1 Demographic findings

| Clinical factor | Malignancy (N=26) | Benign (N=14) | P value |
|---------------------|---|---|---------|
| Male:female | 22:4 | 13:1 | 0.640 |
| Age | 57.9±5.2 | 46.1±7.6 | 0.014 |
| Primary | Oral: 12 (46.2%) Oropharynx: 9 (34.6%) Hypopharynx: 3 (11.5%) Larynx: 2 (7.7%) | Parotid: 11 (78.6%) Submandibular gland: 3 (21.4%) | |
| Pathology | Squamous cell carcinoma: 26 (100%) | PA: 10 (71.4%) WA: 4 (28.6%) | |
| T stage | | | |
| T1 | 4 (15.4%) | | |
| T2 | 16 (61.5%) | | |
| T3 | 1 (3.8%) | | |
| T4 | 5 (19.2%) | | |
| N stage | | | |
| N0 | 12 (46.2%) | | |
| N1 | 5 (19.2%) | | |
| N2 | 8 (30.8%) | | |
| N3 | 1 (3.8%) | | |
| Stage | | | |
| I | 3 (11.5%) | | |
| II | 6 (23.1%) | | |
| III | 5 (19.2%) | | |
| IV | 12 (46.2%) | | |
| P16 positive | 13 (50.0%) | | |
| ECS positive | 8 (30.8%) | | |
| Follow-up (average) | 14.7 months | | |

PA, pleomorphic adenoma; WA, Warthin's tumor; ECS, extracapsular spread.

-0.450 with P value 0.005 for blood and -0.439 with P value 0.028 for lymph node, respectively, *Figure 2*).

A comparison between the malignant and benign groups revealed that the CD8 and CD40 positive cell population in peripheral blood was significantly lower in the malignant group than that in the benign group (15.8% in malignant and 20.6% in benign for CD8 cells and 4.5% and 7.2% for CD40 cells, respectively). No significant difference was found in the tumor-free lymph node. Among cytokines in the peripheral blood serum,

concentration of IL6 was significantly higher in the malignant group (9.6 vs. 2.1 pg/mL, *Table 2*).

When compared between the known prognostic factors among malignant group, T stage, N stage, p16, and primary site did not reveal any significant difference. When divided in stage I, II and stage III, IV and between no lymph node metastasis group and extracapsular spread group, CD33 showed significantly higher proportion in tumor-free lymph node in early stage and no lymph node metastasis group (*Table 3*).

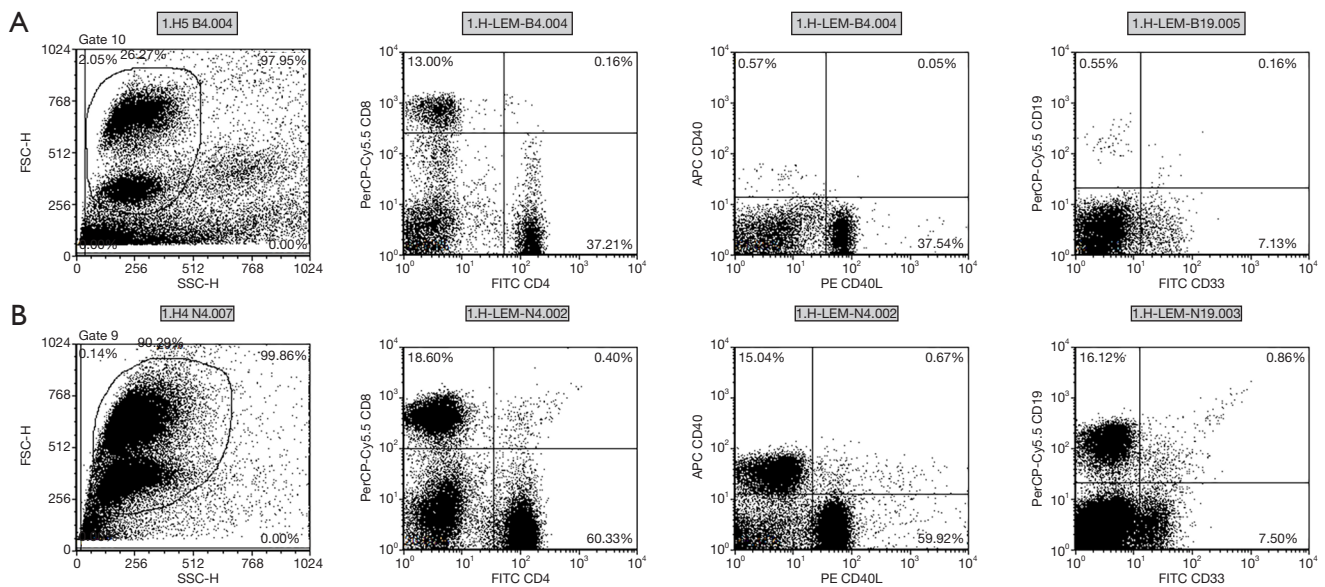


Figure 1 Flow cytometry analysis of CD markers. (A) Peripheral blood sample; (B) tumor-free lymph node sample. CD, cluster of differentiation.

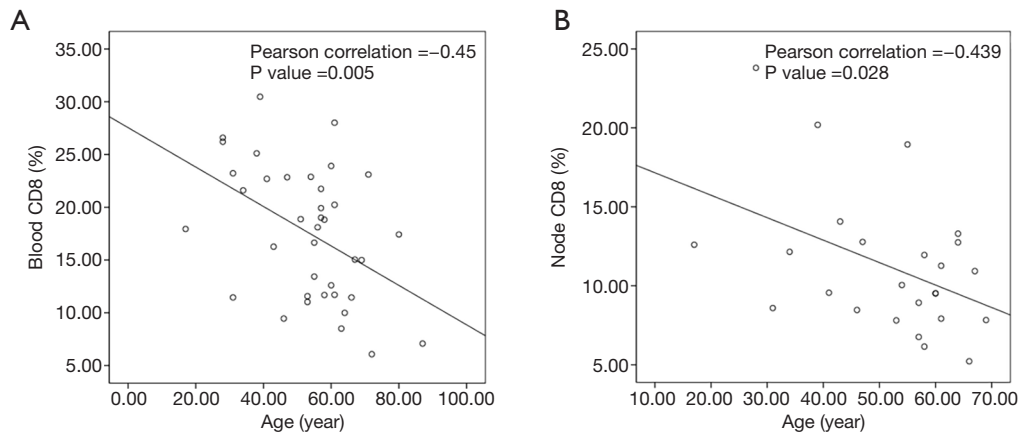


Figure 2 Correlation with proportion of CD8 and age. (A) Blood CD8 and age; (B) nodal CD8 and age. CD, cluster of differentiation.

During the follow-up period, eight cases of recurrence were observed in the malignant group. Distant metastasis to lung or bone in four cases, regional recurrence in three cases, and one primary recurrence in laryngeal cancer was observed. The proportions of CD markers did not show any difference or tendency according to the recurrence or not. Among the serum cytokine levels, IFN γ exhibited a tendency to have a higher value in the recurrence group (30.4 vs. 14.1 pg/mL, $P=0.085$) although the P -value was not significant (Table 4). Receiver operating characteristic

(ROC) curve of IFN γ with state value as recurrence exhibited the highest sensitivity and specificity in the cut-off value of 16 pg/mL. Kaplan-Meier survival analysis using this cut-off value revealed significantly higher recurrence rate in the patients' group with IFN γ level more than 16 pg/mL in serum (Figure 3A). ANOVA analysis between no recurrence, loco-regional recurrence, and distant metastasis indicated significantly higher level of IFN γ in the patients who developed distant metastasis (Figure 3B).

Table 2 Comparison of proportion of immune cells in flowcytometry and serum cytokines between malignant and benign patients

| Markers | Malignancy (N=26) | Benign (N=14) | P value |
|---------------------------|----------------------|------------------|---------|
| Peripheral blood (%) | | | |
| CD4 | 28.2±4.4 (N=24) | 30.5±4.3 (N=14) | 0.503 |
| CD8 | 15.8±2.5 (N=24) | 20.6±2.6 (N=14) | 0.020 |
| CD40L | 30.5±4.3 (N=24) | 32.1±4.0 (N=14) | 0.633 |
| CD40 | 4.5±1.5 (N=24) | 7.2±2.1 (N=14) | 0.049 |
| CD33 | 8.3±2.3 (N=22) | 7.9±5.3 (N=13) | 0.880 |
| CD19 | 5.5±1.9 (N=22) | 8.3±4.3 (N=13) | 0.085 |
| Tumor free lymph node (%) | | | |
| CD4 | 52.4±6.3 (N=15) | 57.7±5.6 (N=10) | 0.262 |
| CD8 | 11.3±2.5 (N=15) | 11.2±2.4 (N=10) | 0.969 |
| CD40L | 51.2±5.9 (N=16) | 56.0±5.8 (N=10) | 0.290 |
| CD40 | 24.6±6.2 (N=16) | 25.4±7.0 (N=10) | 0.865 |
| CD33 | 6.2±3.4 (N=11) | 5.4±2.6 (N=10) | 0.745 |
| CD19 | 26.3±7.6 (N=11) | 26.9±6.6 (N=10) | 0.909 |
| Serum cytokines (pg/mL) | | | |
| IFN γ | 19.7±6.26 (N=26) | 16.1±6.6 (N=14) | 0.476 |
| IL1 β | 5.2±2.1 (N=26) | 3.5±1.4 (N=14) | 0.289 |
| IL2 | 5.4±6.6 (N=26) | 1.5±1.0 (N=14) | 0.402 |
| IL4 | 31.1±14.3 (N=26) | 31.7±19.4 (N=14) | 0.959 |
| IL5 | 0.5±0.4 (N=26) | 1.2±1.2 (N=14) | 0.151 |
| IL6 | 9.6±5.4 (N=26) | 2.1±2.1 (N=14) | 0.016 |
| IL10 | 28.6±32.9 (N=26) | 4.1±3.0 (N=14) | 0.292 |
| sCD40L | 1,018.8±633.2 (N=26) | 843±687.8 (N=14) | 0.734 |
| TNF α | 19.6±3.9 (N=26) | 16.4±4.4 (N=14) | 0.326 |

Variables showing statistical significance (P<0.05) is marked as bold character. CD, cluster of differentiation; IL, interleukin; sCD40L, soluble CD40 ligand; TNF α , tumor necrosis factor α .

Table 3 Comparison of proportion of immune cell according to the stage and extracapsular spread in malignancy

| Tumor free lymph node (%) | Stage | | | Extracapsular spread | | |
|---------------------------|-------------------|----------------------|---------|----------------------|-----------------|---------|
| | Stage I, II (N=9) | Stage III, IV (N=17) | P value | N0 (N=12) | ECS (+) (N=8) | P value |
| CD4 | 50.5±12.8 (N=6) | 53.7±6.8 (N=9) | 0.644 | 53.2±10.0 (N=8) | 54.4±8.1 (N=4) | 0.882 |
| CD8 | 12.3±5.1 (N=6) | 10.6±2.5 (N=9) | 0.539 | 11.8±3.9 (N=8) | 8.4±1.7 (N=4) | 0.265 |
| CD40L | 49.2±10.4 (N=7) | 52.7±7.1 (N=9) | 0.582 | 51.7±8.6 (N=9) | 53.7±8.6 (N=4) | 0.782 |
| CD40 | 24.4±8.1 (N=7) | 11.9±5.6 (N=9) | 0.961 | 23.4±6.4 (N=9) | 21.2±15.8 (N=4) | 0.769 |
| CD33 | 11.9±5.6 (N=4) | 2.9±1.7 (N=7) | 0.047 | 9.1±4.9 (N=6) | 1.4±0.4 (N=3) | 0.027 |
| CD19 | 22.8±11.6 (N=4) | 28.2±10.3 (N=7) | 0.530 | 22.3±7.4 (N=6) | 29.1±15.5 (N=3) | 0.400 |

Variables showing statistical significance (P<0.05) is marked as bold character. ECS, extracapsular spread; CD, cluster of differentiation; CD40L, CD40 ligand.

Table 4 Comparison of serum cytokines in recurrent cases (pg/mL)

| Cytokines | Recurrence (-) (N=20) | Recurrence (+) (N=8) | P value |
|--------------|-----------------------|-----------------------|---------|
| IFN γ | 14.1 \pm 4.3 | 30.4 \pm 15.7 | 0.085 |
| IL1 β | 3.9 \pm 1.6 | 7.5 \pm 5.5 | 0.247 |
| IL2 | 1.1 \pm 0.7 | 14.8 \pm 20.7 | 0.322 |
| IL4 | 22.5 \pm 12.7 | 45.6 \pm 34.4 | 0.233 |
| IL5 | 0.2 \pm 0.2 | 2.0 \pm 2.0 | 0.133 |
| IL6 | 7.6 \pm 6.4 | 12.2 \pm 8.2 | 0.138 |
| IL10 | 10.3 \pm 6.5 | 67.4 \pm 105.2 | 0.441 |
| sCD40L | 925.0 \pm 730.3 | 1,057.5 \pm 1,051.2 | 0.848 |
| TNF α | 16.9 \pm 2.9 | 24.7 \pm 9.9 | 0.173 |

Variables showing tendency is marked as italic. IFN γ , interferon- γ ; IL, interleukin; sCD40L, soluble CD40 ligand; TNF α , tumor necrosis factor α .

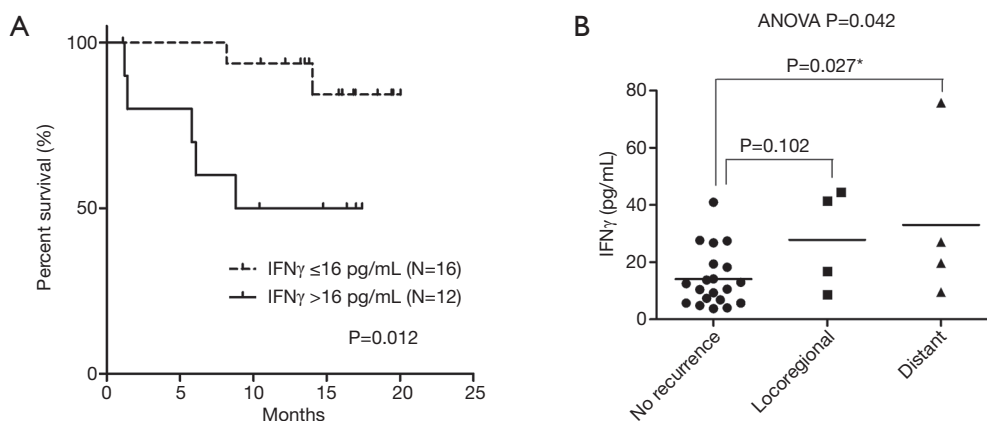


Figure 3 Cancer recurrence and level of IFN γ . (A) Recurrence free survival using cut-off value of IFN γ at 16 pg/mL; (B) ANOVA comparison of IFN γ level between the mode of recurrences. IFN γ , interferon- γ ; ANOVA, analysis of variance. *, statistically significant ($P < 0.05$).

Discussion

This study aimed to investigate whether there is differential expression of immune markers in the peripheral blood or tumor-free lymph node in malignant patients and also to find the difference in cancer patients having adverse feature and the predictive factors for future disease progression or recurrence. Using flow cytometric evaluation of the blood and tumor-free lymph node, the key markers for the immune system were evaluated. The markers tested were CD4 and CD8a for T cells, CD19 for B cells, and CD33 for macrophages or monocytes. However, the panel of flow cytometry was very limited, and the markers are not specific for one kind of cell. Therefore, defining the immune cells

by only one marker may be difficult and we will cite them as marker positive cell rather than T or B cell. In addition, following our previous study, which suggested CD40L as an important prognostic marker, CD40 and CD40L are included in this analysis (3).

On comparing the malignant and benign groups, it was observed that the proportion of cells expressing CD8 and CD40 in the peripheral blood was significantly lower in the malignant group (15.8% vs. 20.6% in CD8 and 4.5% vs. 7.2% in CD40). In addition, the level of IL6 in the peripheral blood serum was significantly higher in the malignant group. The role of CD4 and CD8 T cells in controlling cancer growth was extensively evaluated by

several studies. Before a malignant tumor is established, aberrant activation of oncogenes induces cellular senescence and these senescent cells are cleared with CD4 T cells and macrophages. If the genetic alteration overloads the senescence, CD8 T cell becomes more important for controlling the tumor growth (4). CD40 is known to be expressed mainly in the B cells and CD40L expressed in activated CD4 T helper cell is crucial in T cell-dependent humoral immune responses (5). In addition, a recent article reported that CD40 is expressed not only in the antigen-presenting cells but also in CD8 T cells, so that CD8 T cells could directly interact with the CD4 cells (6). Therefore, the decreased proportion of CD8 and CD40 positive cells in the peripheral blood could be an important issue in the malignant patients. Nevertheless, the proportion of CD8 in blood and lymph node revealed statistically significant negative correlation with age. Considering this negative correlation of CD8, decreased CD40 in the peripheral blood could be an essential marker in the malignant patients. IL6 is also crucial in cancer growth and can promote cancer survival and proliferation by suppressing T cell activity, and negative correlation of survival in cancer patients with elevated serum IL6 levels is reported (7). Elevated IL6 is known to constitutively activate janus kinase (JAK)/signal transducer and activator of transcription 3 (STAT 3) signaling and novel inhibitors for IL-6/JAK/STAT3 pathway are currently in development (8). However, we compared the squamous cell carcinoma with salivary gland benign tumor instead of normal patients because obtaining lymph node from normal subject is impossible, and it can be a confounding factor.

The markers correlating with disease progression or prognosis are different from those found by comparing the malignant and benign patients. The patients with advanced stage (stage III or IV) and with extracapsular spread in metastatic lymph node exhibited significantly lower proportion of CD33 in tumor-free lymph node compared with the early stage (I or II) or patients with no lymph node metastasis. CD33 mainly expressed in macrophages or monocyte and is studied mainly in acute myeloid leukemia as the main treatment target (9). However, in our unpublished experiment using Balb/C mouse, macrophage or monocytes in the lymph node was decreased during the process of cancer cell elimination, and this decrease was delayed in the immunocompromised mice (unpublished data).

Prediction of recurrence indicated correlation with another marker and patients with increased serum IFN γ level revealed higher recurrence rate, in particularly,

correlating with the distant metastasis. As the number of patients with recurrence is small, and the variations of IFN γ level are widely distributed with some outlier especially in distant metastasis, this finding may require verification with larger number of patients in future study. IFN γ is known to promote immune responses and prevents tumor development (10). A recent study reported the role of IFN γ in cytotoxic T cell-dependent cancer immunoeediting (11). Therefore, explanation of the reason why CD33 in tumor-free lymph node is low in advanced disease or why IFN γ in serum is so high in patients with distant metastasis later on is not easy. Therefore, this reaction is assumed to be the difference that occurs because the immune system is more active due to large tumor burden. As increased tumor burden could result in a larger amount of microscopic remnant after surgery and cancer cells have higher chance to escape the host immunity (12).

With investigation of blood and tumor-free lymph node, we tried to find the immunologic prognostic markers. Most significant markers, CD8, CD40, IL-6 and IFN γ , could be found in peripheral blood and only CD33 in tumor-free lymph node showed some correlation with staging. Lymph node is specialized organ that provides a microenvironment for meeting of migratory immune cells and evokes the defense system. In our animal study about cancer elimination, we found that changes in lymph nodes occur first and similar changes occur later in the blood (unpublished data). Therefore, in already established cancer patients, meaningful changes in lymph node can be difficult to find.

Despite many limitations in this study, the important point is that the selected markers vary depending on what we compared. For example, comparison with benign tumor makes CD40 look like important prognostic factor but analysis based on recurrence of disease pointed IFN γ level as prognostic factor. For the future translational research, this can have important issue. Just targeting the factors showing difference between malignancy and surrounding normal tissue as frequently performed research may not improve prognosis.

Conclusions

This study is based on few cases and it is difficult to derive a clinically significant conclusion for each marker; however, an important fact is that markers exhibiting clinical significance differ from each other based on the comparison between benign and malignant groups, between

advanced and early cancer, and between recurrence and nonrecurrence. Another important aspect of our results is that although several studies emphasize on the cancer tissue itself to identify prognostic markers or therapeutic targets, the host immunity should be considered along with cancer invasiveness to obtain a complete picture on prognosis.

Acknowledgments

Funding: This work was supported by the Basic Science Research Program through the National Research Foundation of Korea (NRF) funded by the Ministry of Education, Science, and Technology (Grant No. NRF-2015R1D1A1A01060660).

Footnote

Conflicts of Interest: All authors have completed the ICMJE uniform disclosure form (available at <http://dx.doi.org/10.21037/tcr.2019.07.35>). The authors have no conflicts of interest to declare.

Ethical Statement: The authors are accountable for all aspects of the work in ensuring that questions related to the accuracy or integrity of any part of the work are appropriately investigated and resolved. The study was conducted in accordance with the Declaration of Helsinki (as revised in 2013). This prospective study protocol was approved by the Institutional Review Board of Seoul National University Bundang Hospital (B-1512-328-305). The patients who decided to enroll gave their informed consent.

Open Access Statement: This is an Open Access article distributed in accordance with the Creative Commons Attribution-NonCommercial-NoDerivs 4.0 International License (CC BY-NC-ND 4.0), which permits the non-commercial replication and distribution of the article with the strict proviso that no changes or edits are made and the original work is properly cited (including links to both the formal publication through the relevant DOI and the license).

Cite this article as: Ahn SH, Park SJ, Park H, Choi JY, Kim SD, Han S, Chung EJ, Jeong WJ. Changes in immune markers in tumor-free lymph node and peripheral blood of malignant head and neck cancer patients. *Transl Cancer Res* 2019;8(4):1523-1530. doi: 10.21037/tcr.2019.07.35

See: <https://creativecommons.org/licenses/by-nc-nd/4.0/>.

References

1. Kang H, Kiess A, Chung CH. Emerging biomarkers in head and neck cancer in the era of genomics. *Nat Rev Clin Oncol* 2015;12:11-26.
2. Kim R, Emi M, Tanabe K. Cancer immunoediting from immune surveillance to immune escape. *Immunology* 2007;121:1-14.
3. Rah YC, Ahn JC, Jeon EH, et al. Low expression of CD40L in tumor-free lymph node of oral cavity cancer related with poor prognosis. *Int J Clin Oncol* 2018;23:851-9.
4. Ostroumov D, Fekete-Drimusz N, Saborowski M, et al. CD4 and CD8 T lymphocyte interplay in controlling tumor growth. *Cell Mol Life Sci* 2018;75:689-713.
5. van Kooten C, Banchereau J. CD40-CD40 ligand. *J Leukoc Biol* 2000;67:2-17.
6. Bourgeois C, Rocha B, Tanchot C. A role for CD40 expression on CD8+ T cells in the generation of CD8+ T cell memory. *Science* 2002;297:2060-3.
7. Wang L, Miyahira AK, Simons DL, et al. IL6 signaling in peripheral blood T cells predicts clinical outcome in breast cancer. *Cancer Res* 2017;77:1119-26.
8. Johnson DE, O'Keefe RA, Grandis JR. Targeting the IL-6/JAK/STAT3 signalling axis in cancer. *Nat Rev Clin Oncol* 2018;15:234-48.
9. Laing AA, Harrison CJ, Gibson BES, et al. Unlocking the potential of anti-CD33 therapy in adult and childhood acute myeloid leukemia. *Exp Hematol* 2017;54:40-50.
10. Ikeda H, Old LJ, Schreiber RD. The roles of IFN gamma in protection against tumor development and cancer immunoediting. *Cytokine Growth Factor Rev* 2002;13:95-109.
11. Takeda K, Nakayama M, Hayakawa Y, et al. IFN- γ is required for cytotoxic T cell-dependent cancer genome immunoediting. *Nat Commun* 2017;8:14607.
12. Schreiber RD, Old LJ, Smyth MJ. Cancer immunoediting: integrating immunity's roles in cancer suppression and promotion. *Science* 2011;331:1565-70.