



Approach to wild-type gastrointestinal stromal tumors

Joshua K. Kays¹, Jeffrey D. Sohn², Bradford J. Kim¹, Katherine Goze¹, Leonidas G. Koniaris¹

¹Department of Surgery, Indiana University School of Medicine, Indianapolis, IN, USA; ²Monmouth Medical Center, Robert Wood Johnson Barnabas Health, Long Branch, NJ, USA

Contributions: (I) Conception and design: JK Kays, LG Koniaris; (II) Administrative support: All authors; (III) Provision of study material or patients: JK Kays, BJ Kim, K Goze, JD Sohn; (IV) Collection and assembly of data: JK Kays, BJ Kim, K Goze, JD Sohn; (V) Data analysis and interpretation: All authors; (VI) Manuscript writing: All authors; (VII) Final approval of manuscript: All authors.

Correspondence to: Leonidas G. Koniaris, MD, MBA. Department of Surgery, Indiana University School of Medicine, EH 511 SGEN, Indianapolis, IN 46202, USA. Email: lkoniari@iu.edu.

Abstract: Gastrointestinal stromal tumors (GISTs) arise from the intestinal pacemaker cells of Cajal. Wild-type gastrointestinal stromal tumors (WT-GIST) are a unique and uncommon subtype of GISTs that lack activating mutations in the tyrosine kinase c-KIT or platelet derived growth factor receptor alpha (PDGFRA) receptors. The lack of these growth-stimulating mutations renders tyrosine kinase receptor inhibitors, such as imatinib mesylate, relatively ineffective against these tumors. WT-GIST arises most commonly due to underlying alternate proliferative signals associated with germ-line, genetic mutations. WT-GIST frequently arises in patients with BRAF mutations, Carney's Triad or neurofibromatosis type-1 (NF-1). All patients with WT-GIST require a careful examination for germ-line mutations and very close observation for recurrent tumors. Surgery remains a mainstay therapy for these patients. This review aims to discuss the most recent data available on the diagnosis and treatment of WT-GIST.

Keywords: Gastrointestinal stromal tumor (GIST); sarcoma; succinate dehydrogenase (SDH); wild-type gastrointestinal stromal tumor (WT-GIST)

Received: 20 October 2018; Accepted: 29 October 2018; Published: 15 November 2018.

doi: 10.21037/tgh.2018.10.13

View this article at: <http://dx.doi.org/10.21037/tgh.2018.10.13>

Introduction

Originating from the interstitial cells of Cajal, gastrointestinal stromal tumors (GISTs) are the most common mesenchymal neoplasms of the gastrointestinal (GI) tract (1,2). Subendothelial in location, GISTs typically present in the seventh decade of life and can arise anywhere along the GI tract, most commonly in the stomach. The discovery of the KIT and platelet derived growth factor receptor alpha (PDGFRA) tyrosine-kinase gain of function mutations, which result in continuous activation and signaling, dramatically altered the understanding and treatment of GISTs (3,4). Approximately 90% of GISTs are driven by gain-of-function mutations in one of the two type-III tyrosine kinase receptors. Although resection remains a principle therapy, tyrosine-kinase inhibitors have revolutionized the treatment of advanced and recurrent

GISTs, allowing many patients with advanced disease to live many years and in some instances, obtain complete remission (5-8).

Wild-type gastrointestinal stromal tumors (WT-GISTs) are defined as GISTs that lack the gain-of-function mutations in KIT and PDGFRA (9). Due to the different molecular drivers and the distinct tumor biology and behavior of these wild-type neoplasms, a different approach to treatment may be required when addressing these distinct GISTs.

Epidemiology of WT-GIST

Regardless of subtype, the incidence of all GISTs is approximately 14–20 per million population (1). The incidence of WT-GIST is as much as 10% of all GISTs (10). Patients with WT-GISTs usually present at a much younger

age. GISTs arising in younger patients are much more commonly associated with the wild-type variant. In patients under 23 years of age, 85% of GISTs are WT (4,11).

Molecular characteristics of WT-GIST

The majority of GISTs have mutations in the proto-oncogenes KIT or PDGFRA. Mutations in these tyrosine kinase receptors result in ligand independent kinase activation, resulting in cellular proliferation and oncogenesis (1,3,4,9). Wild-type GIST variants are negative for mutations in KIT and PDGFRA. Consequently, these rare wild-type GISTs are generally resistant to tyrosine kinase inhibitors (i.e., imatinib and sunitinib) currently used in the treatment of the more common variety of GISTs (1). Thus, an understanding of the molecular characteristics of these wild-type GISTs is important for making clinical decisions and for the future development of targeted therapeutic agents against these rare tumors.

Recent studies demonstrate that WT-GISTs are an entity with multiple subtypes. Of these subtypes, the succinate dehydrogenase (SDH) deficiency variant is the most common. The SDH-ubiquinone complex II is an enzyme complex found in the Krebs cycle and the electron transport chain. Loss of function of SDH is thought to play a central role in the pathogenesis of many WT-GISTs. It is postulated that SDH deficiency may lead to activation of insulin-like growth factor 1-receptor (IGF1R) signaling and results in oncogenesis. These SDH deficient GISTs arise exclusively in the stomach as multiple lesions. They also have a predilection for young female patients and are responsible for over half of gastric GISTs in patients under 40 years (1,12-15). Mutations of SDH are not solely exclusive to GIST pathogenesis and have been associated with other tumors such as malignant pheochromocytoma and renal cell carcinoma (13).

The majority of SDH deficient WT-GISTs are due to germline or somatic mutation in the SDH complex, specifically in genes coding for its subunits: SDHA, SDHB, SDHC, or SDHD. SDHA and SDHB code for subunits involved in the enzymatic activity of SDH, while SDHC and SDHD code for the subunits which anchor the SDH complex to the inner mitochondrial membrane. Mutations in all subunits have been implicated in WT-GIST formation; however, mutations in the SDHA subunit are most common. SDH deficiency can also be expressed without inactivating mutations of the gene itself, but through hypermethylation. Specifically, it has been found

that methylation at the SDHC promoter leads to silencing of gene expression (16,17).

The remaining WT-GISTs are classified as SDH-competent. These tumors have demographic features similar to c-KIT/PDGFRA mutant tumors with the exception of their propensity to occur in the small bowel (17). SDH-competent WT-GISTs may be associated with other mutations such as Neurofibromatosis type-1 (NF1), BRAF V600E (BRAF), RAS, or quadruple WT GISTs, which lack abnormalities in c-KIT, PDGFRA, SDH and RAS (17-22).

Syndromic associations of WT-GIST

In addition to occurring sporadically, WT-GISTs may be the result of an associated syndrome. GISTs are a well-established manifestation of neurofibromatosis type-I (NF1), with up to 25% of patients with NF1 developing a GIST over their lifetime (23,24). Additionally, these tend to be WT-GISTs (25,26).

Carney-Stratakis syndrome (CSS) is characterized by paragangliomas and GISTs. Carney triad (CT) describes the association of paragangliomas with GISTs and pulmonary chondromas. Both CSS and CT have been associated with SDH-deficient WT-GISTs (14).

Familial GIST syndrome is a rare hereditary disorder characterized by germline gain-of-function KIT mutations and less commonly PDGFRA mutations. These are *not* associated with WT-GIST tumors (1).

Diagnosis

Initial diagnosis and treatment is similar for all GISTs and is outlined in *Figure 1*. Imaging, biopsy, pathologic examination and molecular analysis are all part of the diagnostic work up.

Imaging

The diagnosis of all GIST can often be suspected based on imaging features. Computed tomography (CT) scan of the abdomen and pelvis showing a heterogeneously, vascularity enhancing exophytic mass emanating from the GI tract is the predominant pattern seen with GIST (27,28).

Endoscopic ultrasound and biopsy

Diagnosis of an abdominal mass suspicious for GIST can reasonably be treated with surgery directly without

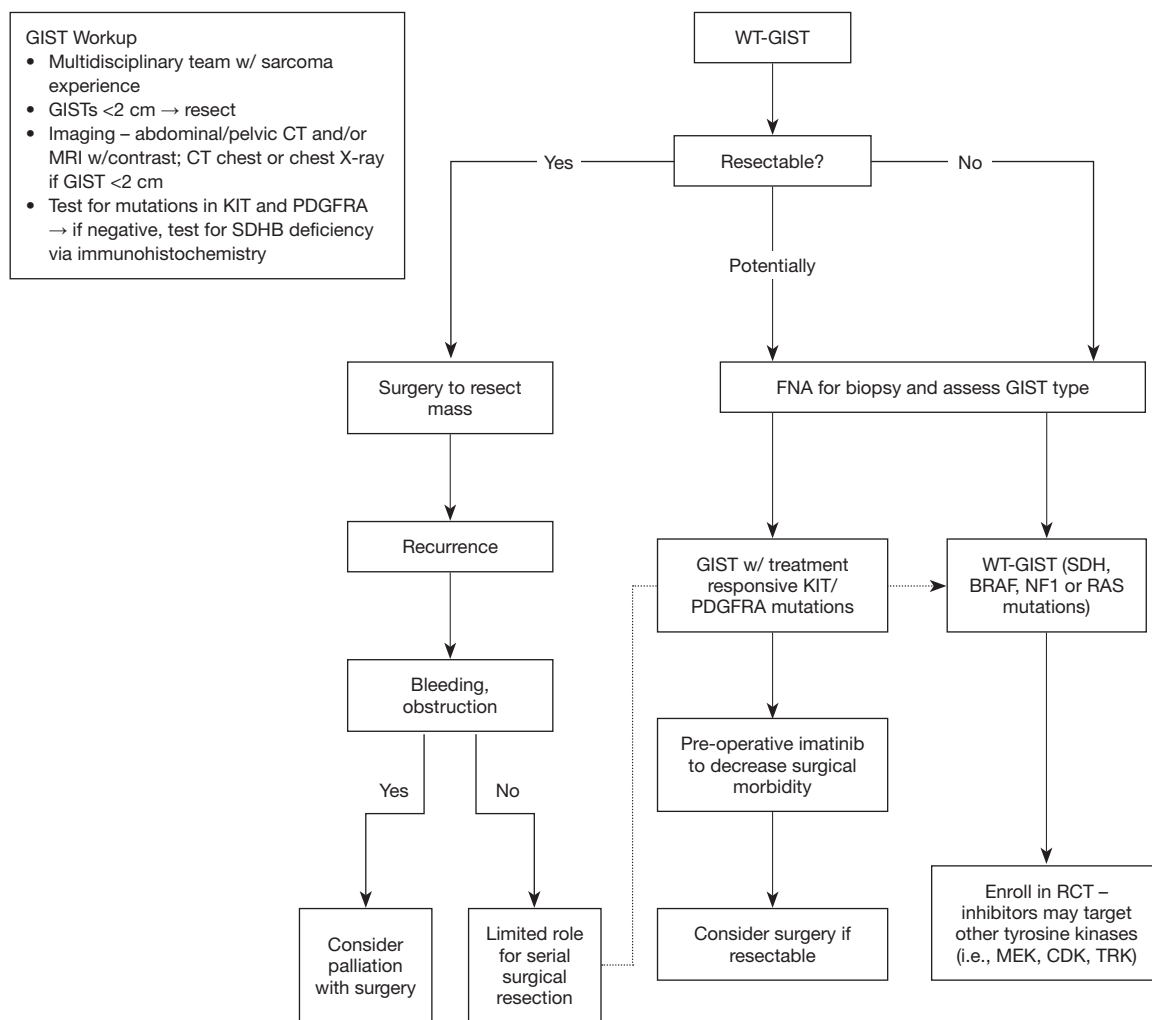


Figure 1 Diagnostic algorithm for WT-GIST; WT-GIST, wild-type gastrointestinal stromal tumor.

additional procedures. If the diagnosis remains unclear, however, endoscopic or endoscopic ultrasound-directed fine needle aspiration may be performed (29). Percutaneous biopsy should be avoided due to the risk of seeding the biopsy tract with cancerous cells. In the setting of large tumors PET scanning may also be considered to better stage patients and to monitor the metabolic activity of the tumor.

Pathologic analysis

Initial pathologic analysis must include the determination of the dimensions of the tumor and histologic analysis focusing specifically on mitotic rate. Size and mitotic rate are the main factors in risk stratification (Table 1). Testing for the

presence of c-KIT and PDGFRA mutations is a standard part of the initial analysis for any GIST (29).

Molecular subtyping

Tumors lacking c-KIT and PDGFRA mutations should be approached in a step wise fashion starting with testing for SDH status (Figure 2) (31). Immunohistochemical staining with observed loss of the ubiquitously expressed SDHB has proven to be an accurate and cost-efficient diagnostic marker for SDH deficiency (15,17,32,33). Patients with SDH competent tumors should be tested for mutations in NF1 and BRAF as these have been identified to be present in SDH competent WT-GISTs (34).

Patients with SDH deficient WT-GISTs should undergo

tumor and germline sequencing of SDH because those with SDHX germline mutations are at increased risk for developing paraganglioma, pheochromocytoma, and other tumors (35). Routine screening with total body magnetic resonance imaging (MRI), urine metanephrines, and/or plasma catecholamines along with referral to a genetic counselor should also be strongly considered (36).

Treatment for WT-GIST

In our current armamentarium against GISTs, surgical management remains standard and is the only option that offers the potential for cure in patients with resectable tumors (18). In about 60% of individuals, surgery can offer cure (27). GISTs are resistant to standard cytotoxic chemotherapeutics available (11). In patients with locally advanced disease, metastatic disease or recurrent disease, tyrosine kinase inhibitors, like imatinib mesylate, have offered patients a treatment option with studies demonstrating excellent response (9). However, WT-GISTs in particular remain a challenge as they are generally resistant to imatinib (31).

While treatment strategies for WT-GISTs are not

clearly established. The NIH Pediatric and Wild-Type GIST clinic data demonstrated no improvement in event-free survival with extensive or serial resections and proposed surgical therapy to be reserved for initial resection and only repeat resections to address palliation of symptoms such as obstruction or bleeding (37). Nonetheless, surgical resection remains a critical component, perhaps the key component, in the overall treatment of WT-GIST as it provides the only chance for cure and can optimize palliation (38-40).

Although type-III tyrosine kinase receptor therapy

Table 1 Risk stratification for GIST

Risk of progression	Size (cm)	Mitotic count (per 50 HPF)
Very low	<2	<5
Low	2–5	<5
Intermediate	<5	6–10
	5–10	<5
High	>5	>5
	>10	Any mitotic count

Adapted with permission from Trifan *et al.* (30). HPF, high power fields; GIST, gastrointestinal stromal tumor.

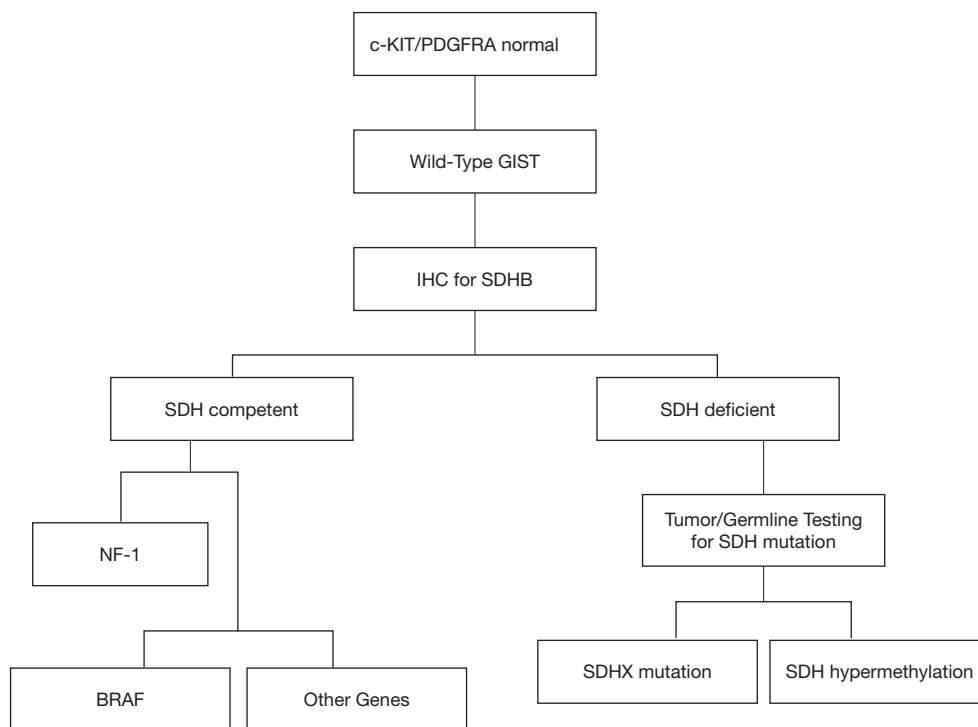


Figure 2 Treatment algorithm for WT-GIST. WT-GIST, wild-type gastrointestinal stromal tumor.

has proven ineffective, there may be a role for alternative adjunct treatments in WT-GIST. Pazopanib, a vascular endothelial growth factor receptor (VEGFR) inhibitor has recently been shown to improve progression-free survival in patients with advanced GIST resistant to imatinib and sunitinib (41). Additionally, the BRAF inhibitor dabrafenib, has demonstrated prolonged antitumor activity in V600E BRAF-mutated GIST (42). MEK inhibition has similarly been shown to reduce the growth of tumors in patients with NF-1 (43). Lastly, inhibition of insulin-like growth factor receptor 1 has led to cytotoxicity and induced apoptosis in patients with WT-GIST (44). For all of the adjunctive therapies additional trials will be needed.

Conclusions

In summary, WT-GISTs represent a special subset of GIST that require specialized treatment strategies based on their unique biological characteristics. While surgical resection remains the cornerstone of treatment for resectable tumors and an option for symptomatic tumors, testing for SDH competence is indicated for all GISTs that lack c-KIT and PDGFRA mutations. Further testing and treatment must be individualized based on SDH competence and include testing for SDHX somatic and germline mutations, NF-1, V600E BRAF, RAS, and other genes. While these tumors are not responsive to imatinib, initiation of novel therapeutic agents based on additional testing may prove to be beneficial. WT-GIST still, however, represents a unique clinical entity for which additional research needs to be undertaken to establish the best therapeutic approach.

Acknowledgements

None.

Footnote

Conflicts of Interest: The authors have no conflicts of interest to declare.

References

- Miettinen M, Lasota J. Gastrointestinal stromal tumors. *Gastroenterol Clin North Am* 2013;42:399-415.
- Miettinen M, Lasota J. Histopathology of gastrointestinal stromal tumor. *J Surg Oncol* 2011;104:865-73.
- Hirota S, Isozaki K, Moriyama Y, et al. Gain-of-function mutations of c-kit in human gastrointestinal stromal tumors. *Science* 1998;279:577-80.
- Heinrich MC, Corless CL, Duensing A, et al. PDGFRA activating mutations in gastrointestinal stromal tumors. *Science* 2003;299:708-10.
- Joensuu H, Roberts PJ, Sarlomo-Rikala M, et al. Effect of tyrosine kinase inhibitor STI571 in a patient with metastatic gastrointestinal stromal tumor. *N Engl J Med* 2001;344:1052-6.
- Pedroso FE, Raut CP, Xiao H, et al. Has the survival rate for surgically resected gastric gastrointestinal stromal tumors improved in the tyrosine kinase inhibitor era? *Ann Surg Oncol* 2012;19:1748-58.
- Cheung MC, Zhuge Y, Yang R, et al. Disappearance of racial disparities in gastrointestinal stromal tumor outcomes. *J Am Coll Surg* 2009;209:7-16.
- Perez EA, Livingstone AS, Franceschi D, et al. Current incidence and outcomes of gastrointestinal mesenchymal tumors including gastrointestinal stromal tumors. *J Am Coll Surg* 2006;202:623-9.
- Heinrich MC, Corless CL, Blanke CD, et al. Molecular correlates of imatinib resistance in gastrointestinal stromal tumors. *J Clin Oncol* 2006;24:4764-74.
- Corless CL, Fletcher JA, Heinrich MC. Biology of gastrointestinal stromal tumors. *J Clin Oncol* 2004;22:3813-25.
- Janeway KA, Liegl B, Harlow A, et al. Pediatric KIT wildtype and platelet-derived growth factor receptor alpha wild-type gastrointestinal stromal tumors share KIT activation but not mechanisms of genetic progression with adult gastrointestinal stromal tumors. *Cancer Res* 2007;67:9084-8.
- Miettinen M, Lasota J, Sobin LH. Gastrointestinal stromal tumors of the stomach in children and young adults: a clinicopathologic, immunohistochemical, and molecular genetic study of 44 cases with long-term follow-up and review of the literature. *Am J Surg Pathol* 2005;29:1373-81.
- Janeway KA, Kim SY, Lodish M, et al. Defects in succinate dehydrogenase in gastrointestinal stromal tumors lacking KIT and PDGFRA mutations. *Proc Natl Acad Sci USA* 2011;108:314-8.
- Stratakis CA and Carney JA. The triad of paragangliomas, gastric stromal tumours, and pulmonary chondromas (Carney triad), and the dyad of paragangliomas and gastric stromal sarcomas (Carney-Stratakis syndrome): molecular genetics and clinical implications. *J Intern Med* 2009;266:43-52.
- Miettinen M, Wang ZF, Sarlomo-Rikala M, et al. Succinate

- dehydrogenase-deficient GISTs: a clinicopathologic, immunohistochemical, and molecular genetic study of 66 gastric GISTs with predilection to young age. *Am J Surg Pathol* 2011;35:1712-21.
16. Haller F, Moskaley EA, Faucz FR, et al. Aberrant DNA hypermethylation of SDHC: a novel mechanism of tumor development in Carney triad. *Endocr Relat Cancer* 2014;21:567-77.
 17. Boikos SA, Pappo AS, Killian JK, et al. Molecular subtypes of KIT/PDGFR α wild-type gastrointestinal stromal tumors: a report from the National Institutes of Health Gastrointestinal Stromal Tumor Clinic. *JAMA Oncol* 2016;2:922-28.
 18. Nishida T, Tsujimoto M, Takahashi T, et al. Gastrointestinal stromal tumors in Japanese patients with neurofibromatosis type I. *J Gastroenterol* 2016;51:571-8.
 19. Huss S, Pasternack H, Ihle MA, et al. Clinicopathological and molecular features of a large cohort of gastrointestinal stromal tumors (GISTs) and review of the literature: BRAF mutations in KIT/PDGFR α wild-type GISTs are rare events. *Hum Pathol* 2017;62:206-14.
 20. Hechtman JF, Zehir A, Mitchell T, et al. Novel oncogene and tumor suppressor mutations in KIT and PDGFR α wild type gastrointestinal stromal tumors revealed by next generation sequencing. *Genes Chromosomes Cancer* 2015;54:177-84.
 21. Pantaleo MA, Nannini M, Corless CL et al. Quadruple wild-type (WT) GIST: defining the subset of GIST that lacks abnormalities of KIT, PDGFR α , SDH or RAS signaling pathways. *Cancer Med* 2015;4:101-3.
 22. Andersson J, Sihto H, Meis-Kindblom JM, et al. NF1-associated gastrointestinal stromal tumors have unique clinical, phenotypic, and genotypic characteristics. *Am J Surg Pathol* 2005;29:1170-6.
 23. Ricci R. Syndromic gastrointestinal stromal tumors. *Hered Cancer Clin Pract* 2016;14:15.
 24. Agaimy A, Vassos N, Croner RS. Gastrointestinal manifestations of neurofibromatosis type 1 (Recklinghausen's disease): clinicopathological spectrum with pathogenic considerations. *Int J Clin Exp Pathol* 2012;5:852-62.
 25. Mussi C, Schildhaus HU, Gronchi A, et al. Therapeutic consequences from molecular biology for gastrointestinal stromal patients affected by neurofibromatosis type 1. *Clin Cancer Res* 2008;14:4550-5.
 26. Kinoshita K, Hirota S, Isozaki K, et al. Absence of c-kit gene mutations in gastrointestinal stromal tumours from neurofibromatosis type 1 patients. *J Pathol* 2004;202:80-5.
 27. von Mehren M, Joensuu H. Gastrointestinal stromal tumors. *J Clin Oncol* 2018;36:136-43.
 28. Sandrasegaran K, Rajesh A, Rydberg J, et al. Gastrointestinal stromal tumors: clinical, radiologic, and pathologic features. *AJR Am J Roentgenol* 2005;184:803-11.
 29. National Comprehensive Cancer Network. Soft Tissue Sarcoma (Version 2.2018). Available online: <https://www.nccn.org/professionals/physician/gls/pdf/sarcoma.pdf>, accessed September 22, 2018.
 30. Trifan A, Singeap AM, Stanciu C. Small bowel stromal tumors: Approach by capsule endoscopy. In: Pascu O. editor. *New Techniques in Gastrointestinal Endoscopy*. InTech. Available online: <http://www.intechopen.com/books/new-techniques-in-gastrointestinalendoscopy/small-bowel-stromal-tumors-approach-by-capsule-endoscopy>, accessed on October 28, 2018.
 31. Nishida T. Therapeutic strategies for wild-type gastrointestinal stromal tumor: is it different from KIT or PDGFR α -mutated GISTs? *Transl Gastroenterol Hepatol* 2017;2:92.
 32. Gill AJ, Chou A, Vilain R, et al. Immunohistochemistry for SDHB divides gastrointestinal stromal tumors (GISTs) into 2 distinct types. *Am J Surg Pathol* 2010;34:636-44.
 33. Gaal J, Stratakis CA, Carney JA, et al. SDHB immunohistochemistry: a useful tool in the diagnosis of Carney-Stratakis and Carney triad gastrointestinal stromal tumors. *Mod Pathol* 2011;24:147-51.
 34. Agaram NP, Wong GC, Guo T, et al. Novel V600E BRAF mutations in imatinib-naïve and imatinib-resistant gastrointestinal stromal tumors. *Genes Chromosomes Cancer* 2008;47:853-59.
 35. Evenepoel L, Papatomas TG, Krol N, et al. Toward an improved definition of the genetic tumor spectrum associated with SDH germ-line mutations. *Genet Med* 2015;17:610-20.
 36. Jaspersen KW, Kohlmann W, Gammon A, et al. Role of rapid sequence whole-body MRI screening in SDH-associated hereditary paraganglioma families. *Fam Cancer* 2014;13:257-65.
 37. Weldon CB, Madenci AL, Boikos SA, et al. Surgical management of wild-type gastrointestinal stromal tumors: a report from the National Institutes of Health Pediatric Wild-Type GIST clinic. *J Clin Oncol* 2017;35:523-8.
 38. Kim BJ, Kays JK, Koniaris LG, et al. Understanding the critical role for surgery in the management of wild-type gastrointestinal stromal tumors (GIST). *Transl Gastroenterol Hepatol* 2017;2:91.
 39. Valsangkar N, Sehdev A, Misra S, et al. Current

- management of gastrointestinal stromal tumors: surgery, current biomarkers, mutations, and therapy. *Surgery* 2015;158:1149-64.
40. Zhuge Y, Cheung MC, Yang R, et al. Pediatric intestinal foregut and small bowel solid tumors: a review of 105 cases. *J Surg Res* 2009;156:95-102.
 41. Mir O, Cropet C, Toulmonde M, et al. Pazopanib plus best supportive care versus best supportive care alone in advanced gastrointestinal stromal tumours resistant to imatinib and sunitinib (PAZOGIST): a randomised, multicenter, open-label phase 2 trial. *Lancet Oncol* 2016;17:632-41.
 42. Falchook GS, Trent JC, Heinrich MC, et al. BRAF mutant gastrointestinal stromal tumor: first report of regression with BRAF inhibitor dabrafenib (GSK2118436) and whole exomic sequencing for analysis of acquired resistance. *Oncotarget* 2013;4:310-5.
 43. Jessen WJ, Miller SJ, Jousma E, et al. MEK inhibition exhibits efficacy in human and mouse neurofibromatosis tumors. *J Clin Invest* 2013;123:340-7.
 44. Tarn C, Rink L, Merkel E, et al. Insulin-like growth factor 1 receptor is a potential therapeutic target for gastrointestinal stromal tumors. *Proc Natl Acad Sci USA* 2008;105:8387-92.

doi: 10.21037/tgh.2018.10.13

Cite this article as: Kays JK, Sohn JD, Kim BJ, Goze K, Koniari LG. Approach to wild-type gastrointestinal stromal tumors. *Transl Gastroenterol Hepatol* 2018;3:92.