

A comparison of native vaginal and ligament surgery for cure of pelvic organ prolapse and overactive bladder

Nikita Kubin^{1^}, Dmitry Shkarupa^{1^}, Ekaterina Shapovalova^{2^}, Anastasiya Zaytseva^{1^}

¹Department of Urology, Saint Petersburg State University Hospital, Saint Petersburg, Russian Federation; ²Department of Gynecology, Saint Petersburg State University Hospital, Saint Petersburg, Russian Federation

Contributions: (I) Conception and design: All authors; (II) Administrative support: All authors; (III) Provision of study materials or patients: All authors; (IV) Collection and assembly of data: All authors; (V) Data analysis and interpretation: All authors; (VI) Manuscript writing: All authors; (VII) Final approval of manuscript: All authors.

Correspondence to: Nikita Kubin, MD, PhD. Department of Urology, Saint Petersburg State University Hospital, 154, Fontanka Embankment, Saint Petersburg 190103, Russian Federation. Email: nikitakubin@gmail.com.

Abstract: The key messages from the Shkarupa *et al.* native cardinal/uterosacral ligament (CL/USL) study, was that, in premenopausal women, ligament repair alone is sufficient for cure of pelvic organ prolapse (POP) and urgency, achieving cure rates of 85.7% for POP and 81.6% for urgency at 12 months. However, in postmenopausal women, the cure rates were 20.5% for POP and 33.3% for urge at 12 months. The *Lancet* Prospect Trial recorded 21% for native vaginal repair at 12 months. The poor POP cure rate in the Prospect Trial, and the rapid deterioration in the post-menopausal CL/USL repair group, can be explained by known biomechanics. The vagina has little structural strength. Ligaments, with a much higher breaking strain, are the main structural support of pelvic organs. Yet, even native ligament repair reported very low cure rates at 12 months. The poor results in postmenopausal women with native ligament repair can be explained by collagen breakdown after the menopause, as collagen is the key structural component of ligaments. An important question posed in the ligament repair study was, “What happens to women cured by ligament repair after the menopause when the collagen leaches out of the ligaments?”. One recommendation was that collagen creating tapes be routinely applied in prolapse surgery and OAB, at least in postmenopausal women. The recommendation for routine collagen-creating ligament repair methods, especially in older women, are supported by high 5-year surgical cure rates in 70-year-old Japanese women, 91.2% for POP, at 12 months, falling to 79.0 at 60 months, using collagen creating Tissue Fixation System (TFS) minislings.

Keywords: Postmenopausal; premenopausal; collagen; native tissue; ligament repair

Submitted Jul 20, 2023. Accepted for publication Jan 31, 2024. Published online Apr 11, 2024.

doi: 10.21037/atm-23-1781

View this article at: <https://dx.doi.org/10.21037/atm-23-1781>

Introduction

The key points of the article are summarized in the video abstract ([Video S1](#)).

“*Ligaments are for structure, vagina for function*”. Integral Theory (1).

The incidence of pelvic organ prolapse (POP) and overactive bladder (OAB) (frequency, urge, nocturia) is increasing, parallel with the ageing of the population, more especially in Japan (2). Worldwide, about 40% of women will experience POP, and this proportion is expected to increase with the ageing of the population (3). As regards

[^] ORCID: Nikita Kubin, 0000-0001-5189-4639; Dmitry Shkarupa, 0000-0003-0489-3451; Ekaterina Shapovalova, 0000-0002-4574-2492; Anastasiya Zaytseva, 0000-0002-8763-6188.

surgery, in 2008, the lifetime risk for an 80-year-old woman undergoing at least one POP surgery in Denmark was 18.7% (4). Traditionally, native anterior and posterior repair of the vagina have been applied to repair prolapse, but cure rates remain dismally low. In contrast, high cure rates for POP and OAB (urge frequency nocturia) have been reported using collagen-creating sling (5) techniques to repair the uterosacral ligaments (USLs) (6-12), analogous to midurethral sling (MUS) surgery.

However, more recently, these posterior sling operations have been placed in the same category as mesh sheets. They are banned by regulatory bodies in many western countries, and in some, the MUS also. In such countries, native tissue repair remained the only available option for women who have prolapse.

Results from studies

We compare native vaginal tissue repair (12), native ligament (13) and site-specific ligament repair with collagen-producing mesh tapes (10,14).

Native vaginal repair

In 2017, the *Lancet* Prospect Trial assessed 430 women mean age 59 years, who had mainly standard vaginal repair for “POP” (12); 78 had co-occurring urinary incontinence (12). The failure rate for native tissue vaginal repair of the prolapse 6 months after surgery was 79% (12).

Native cardinal/uterosacral ligament (CL/USL) repair

In 2021, Shkarupa *et al.* studied the effect of native tissue

Table 1 Cure rate of POP and overactive bladder symptoms in different points of follow-up (13)

POP/OAB symptoms	Pre-menopausal group (n=49) (%)	Post-menopausal group (n=39) (%)
3 months		
Frequency	71.5	64.1
Urgency	85.7	82
Nocturia	96	64.1
POP	98	89.7
6 months		
Frequency	77.5	48.7
Urgency	85.7	64.1
Nocturia	98	59
POP	85.7	48.7
12 months		
Frequency	63.3	38.5
Urgency	81.6	33.3
Nocturia	71.5	25.6
POP	85.7	20.5
18 months		
Frequency	59.2	15.4
Urgency	67.3	17.9
Nocturia	87.7	20.5
POP	79.6	15.4

Reused from (13). Copyright 2021, with permission from *Central European Journal of Urology*. POP, pelvic organ prolapse; OAB, overactive bladder.

CL/USL repair on POP and “OAB” (frequency, urgency, nocturia) and POP (*Table 1*) (13). An important inclusion criterion was decrease of urge symptoms following insertion of a roll gauze tampon in the posterior fornix of the vagina (“simulated operation”) (13). The importance of this preoperative test was that it linked the urge symptom to the USLs. Exclusion criteria were stress urinary incontinence (SUI), and POP grades 3–4. The surgery consisted of plication of cardinal and USLs.

Prolapse was assessed by the Baden-Walker classification, and OAB by the Urinary Distress Inventory Short Form 6 (UDI-6), Overactive Bladder Questionnaire (OAB-q), Pelvic Floor Impact Questionnaire-Short Form 7 (PFIQ-7), and International Consultation on Incontinence Questionnaire-

Highlight box

Key findings

- Native ligament surgery gives good cure rates for pelvic organ prolapse (POP) and overactive bladder (OAB) pre-menopausally, but low cure rates post-menopausally.

What is known and what is new?

- Vaginal surgery has poor results for POP repair.
- Ligament surgery gives good cure rates for OAB and POP, but only in premenopausal women, not postmenopausal women.

What is the implication, and what should change now?

- In postmenopausal women, collagen-creating methods are needed to structurally reinforce weakened ligaments for POP repair.

Urinary Incontinence Short Form (ICIQ-SF) questionnaires and voiding diary. Postoperative assessment was performed at 3, 6, 12 and 18 months after surgery. There was a marked difference between the premenopausal and postmenopausal women for POP, and all the OAB symptoms, urge, frequency, nocturia (*Table 1*) (13).

Ligament repair alone was sufficient for cure of POP and urgency in premenopausal women, achieving cure rates of 85.7% for POP and 81.6% for urgency at 12 months. For postmenopausal women, at 12 months, the cure rate for POP was 20% and for urge 33% (*Table 1*) (13).

With reference to the excellent results for premenopausal women at 18 months (*Table 1*), the authors (13) raised the questions, “What happens after the menopause? Would collagen breakdown cause POP and OAB?” (13). Their recommendation to use collagen creating tapes for women with significant prolapse and OAB, was based on their unit’s experience (6). More comprehensive details are available in Shkarupa *et al.*’s paper (13).

POP repair using collagen-creating slings

A dramatic difference between native ligament repair and collagen-creating slings in post-menopausal women was demonstrated by long-term data from Japan; Inoue *et al.*’s 5-year data for POP and lower urinary tract symptoms (LUTS) (12) in 70-year-old Japanese women was: 91.2% for POP, 96.8% for urge at 12 months, falling to 79.0% for POP and 91.7% for urge at 60 months (11). Further validation was provided by this group’s 10-year data, 960 women with 3,100 implants (10).

Ligaments are the main structural support of the pelvic organs, while the vagina’s principal role is to transmit the pelvic muscle forces which open and close the urethra and prevent premature bladder emptying (urge incontinence) (1). Native CL/USL ligament repairs work well for premenopausal women, but not for postmenopausal women (12,13). The experience of many authors (7-13) and, in particular, the 10-year experience of Inoue *et al.*, 3,100 tape implants in 960 70-year-old women with 3rd and 4th degree POP with no vaginal excision, indicates that collagen creation methods will be required for good POP surgery results, at least in postmenopausal women (10). Hand-cut artisan tapes can be used with individual patients where commercial kits are banned (14). An emerging technique, plication of ligaments with wide-bore polyester sutures (15), already shows great promise. If longer-term results are satisfactory, it could become an available low-cost solution

for countries where all mesh products are banned for vaginal surgery. This method has already been applied to repair pubourethral ligaments for SUI (15), cardinal and USLs for prolapse and OAB symptoms, and also, deep transversus perinei ligaments for cure of descending perineal syndrome and urge fecal incontinence, as described elsewhere in this special series.

Discussion

Hitherto, the relationship between age and higher incidence of OAB and POP after the menopause was known but was never clearly defined. Shkarupa *et al.*’s trial (*Table 1*) very clearly delineated that the menopause is a defining point as regards prospects for surgical cure for both POP and OAB symptoms, and, therefore, the decision for surgery (13).

A very important part of Shkarupa *et al.*’s study (13) was the direct linking of USL weakness and urge by only operating on women who were screened by a preoperative test: reduction of urge by placement of a roll gauze in the vaginal fornix to mechanically support USLs. Cure of OAB by CL/USL repair provides the first experimental evidence of a direct link between USL laxity and OAB (13).

One important difference between the *Lancet* Prospect vaginal repair Trial (12) and the ligament repair trial (13), was the different strengths of the tissues which were repaired: ligaments have a breaking strain 300 mg/mm² and the vagina, 60 mg/mm² (16). Shkarupa *et al.* repaired the CL/USL with no vaginal excision. Ligaments are the structural components of the pelvic floor, while the vagina is concerned with function, transmitting the muscle forces which open and close the urethra (1). The structural collagen 1 in ligaments is much stronger than the collagen 3 and elastin of the vagina which provide its elasticity.

We can deduce from basic biomechanical principles, that, in order to preserve its elastic function, the vagina should be conserved, not excised. Furthermore, collagen deficient ligaments in the menopause need new collagen to be created, so as to prevent the USL ligament elongation which results in organ prolapse and even anterior rectal wall intussusception (*Figure 1*), and to retain their structural function. It is evident on inspecting *Figure 1*, that the organs are suspended by ligaments. Excising and suturing the vagina, a weak structure, cannot by itself cure either a cystocele, or a uterine prolapse, as proven by the *Lancet* Prospect Trial (12). Notwithstanding adherence to these surgical principles (13), the poor results in the menopausal group (*Table 1*), can be reasonably explained by

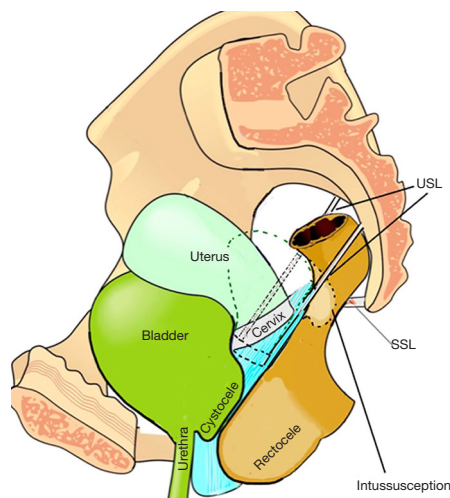


Figure 1 Anatomy of uterine prolapse, cystocele, rectal intussusception, rectocele. The cardinal ligament (not shown) is attached to the anterior part of the cervix; the anterior vaginal wall is attached to the cardinal ligament and the cervix. The uterus is suspended by “USL” which if stretched or damaged, elongate to cause uterine prolapse. The rectal intussusception is a consequence of the lateral USL attachment to the rectum pulling down the anterior rectal wall so it invaginates into the rectal cavity. An overstretched or torn perineal body posteriorly allows ingress of the rectum into the vagina as a rectocele. Reused from Petros P. The female pelvic floor function, dysfunction and management according to the Integral Theory. 3rd ed. Heidelberg: Springer Berlin; 2010. With permission from Peter Petros; retains ownership of the copyright. USL, uterosacral ligament; SSL, sacrospinous ligament.

collagen breakdown after the menopause and excretion as hydroxyproline throughout the menopausal period (17).

Conclusions

The key message from Shkarupa *et al.*'s CL/USL study was that in premenopausal women, ligament repair alone provides good cure rates for POP, and urgency at 12 months. However, catastrophically low cure rates were noted for both conditions in post-menopausal women. Shkarupa *et al.* advised that post-menopausal women required collagen-creating slings. These comments were validated by Inoue *et al.* Using the collagen-creating Tissue Fixation System (TFS) minisling, high 5- and 10-year surgical results for POP and urge were reported in 70-year-old Japanese women (2,11). The final question by Shkarupa

et al. was “What happens to the successful POP and urge group results after the menopause?”. However, this raises another significant question, “Should collagen-creating methods be used routinely for women with POP and LUTS?”.

Acknowledgments

We would like to express our gratitude to Editors Professor Peter Petros and Vani Bardetta for their exceptional support in the design and refinement of the article.

Funding: None.

Footnote

Provenance and Peer Review: This article was commissioned by the International Society for Pelviperineology for the series “Integral Theory Paradigm” published in *Annals of Translational Medicine*. Peter Petros (Editor) and Vani Bardetta (Assistant Editor) served as the unpaid Guest Editors of the series. The article has undergone external peer review.

Peer Review File: Available at <https://atm.amegroups.com/article/view/10.21037/atm-23-1781/prf>

Conflicts of Interest: All authors have completed the ICMJE uniform disclosure form (available at <https://atm.amegroups.com/article/view/10.21037/atm-23-1781/coif>). The series “Integral Theory Paradigm” was commissioned by the International Society for Pelviperineology without any funding or sponsorship. The authors have no other conflicts of interest to declare.

Ethical Statement: The authors are accountable for all aspects of the work in ensuring that questions related to the accuracy or integrity of any part of the work are appropriately investigated and resolved.

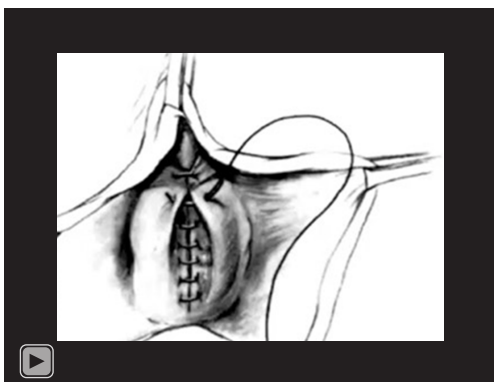
Open Access Statement: This is an Open Access article distributed in accordance with the Creative Commons Attribution-NonCommercial-NoDerivs 4.0 International License (CC BY-NC-ND 4.0), which permits the non-commercial replication and distribution of the article with the strict proviso that no changes or edits are made and the original work is properly cited (including links to both the formal publication through the relevant DOI and the license).

See: <https://creativecommons.org/licenses/by-nc-nd/4.0/>.

References

- Petros PE, Ulmsten UI. An integral theory of female urinary incontinence. Experimental and clinical considerations. *Acta Obstet Gynecol Scand Suppl* 1990;153:7-31.
- Inoue H, Nakamura R, Sekiguchi Y, et al. Tissue Fixation System ligament repair cures major pelvic organ prolapse in ageing women with minimal complications - a 10-year Japanese experience in 960 women. *Cent European J Urol* 2021;74:552-62.
- Wang B, Chen Y, Zhu X, et al. Global burden and trends of pelvic organ prolapse associated with aging women: An observational trend study from 1990 to 2019. *Front Public Health* 2022;10:975829.
- Løwenstein E, Ottesen B, Gimbel H. Incidence and lifetime risk of pelvic organ prolapse surgery in Denmark from 1977 to 2009. *Int Urogynecol J* 2015;26:49-55.
- Petros PE, Ulmsten UI, Papadimitriou J. The autogenic ligament procedure: a technique for planned formation of an artificial neo-ligament. *Acta Obstet Gynecol Scand Suppl* 1990;153:43-51.
- Shkarupa D, Kubin N, Pisarev A, et al. The hybrid technique of pelvic organ prolapse treatment: apical sling and subfascial colporrhaphy. *Int Urogynecol J* 2017;28:1407-13.
- Liedl B, Inoue H, Sekiguchi Y, et al. Is overactive bladder in the female surgically curable by ligament repair? *Cent European J Urol* 2017;70:53-9.
- Petros P, Abendstein B, Swash M. Retention of urine in women is alleviated by uterosacral ligament repair: implications for Fowler's syndrome. *Cent European J Urol* 2018;71:436-43.
- Caliskan A, Ozeren M, Goeschen K. Modified posterior intravaginal slingplasty: does the additional bilateral tape attachment to the sacrospinous ligament improve the results? *Cent European J Urol* 2018;71:326-33.
- Inoue H, Kohata Y, Sekiguchi Y, et al. The TFS minisling restores major pelvic organ prolapse and symptoms in aged Japanese women by repairing damaged suspensory ligaments - 12-48 month data. *Pelviperrineology* 2015;34:79-83.
- Inoue H, Kohata Y, Fukuda T, et al. Repair of damaged ligaments with tissue fixation system minisling is sufficient to cure major prolapse in all three compartments: 5-year data. *J Obstet Gynaecol Res* 2017;43:1570-7.
- Glazener CM, Breeman S, Elders A, et al. Mesh, graft, or standard repair for women having primary transvaginal anterior or posterior compartment prolapse surgery: two parallel-group, multicentre, randomised, controlled trials (PROSPECT). *Lancet* 2017;389:381-92.
- Shkarupa D, Zaytseva A, Kubin N, et al. Native tissue repair of cardinal/uterosacral ligaments cures overactive bladder and prolapse, but only in pre-menopausal women. *Cent European J Urol* 2021;74:372-8.
- Piñango-Luna S, Level-Córdova L, Petros PE, et al. A low cost artisan tension-free tape technique cures pelvic organ prolapse and stress urinary incontinence - proof of concept. *Cent European J Urol* 2020;73:490-7.
- Petros P, Palma P. Conceptualizing stress urinary incontinence surgery beyond midurethral slings: Very early results from simplified ligament repair without tapes. *Neurourol Urodyn* 2023;42:383-8.
- Yamada H. Aging rate for the strength of human organs and tissues. In: Evans FG, editor. *Strength of biological materials*. Baltimore: Williams & Wilkins Co; 1970:272-80.
- Sone T, Miyake M, Takeda N, et al. Urinary excretion of type I collagen crosslinked N-telopeptides in healthy Japanese adults: age- and sex-related changes and reference limits. *Bone* 1995;17:335-9.

Cite this article as: Kubin N, Shkarupa D, Shapovalova E, Zaytseva A. A comparison of native vaginal and ligament surgery for cure of pelvic organ prolapse and overactive bladder. *Ann Transl Med* 2024. doi: 10.21037/atm-23-1781



Video S1 Video abstract.