



An excellent nomogram predicts microvascular invasion that cannot independently stratify outcomes of small hepatocellular carcinoma

Huanhuan Chong^{1,2#}, Peiyun Zhou^{3,4#}, Chun Yang², Mengsu Zeng^{1,2,5^}

¹Shanghai Institute of Medical Imaging, Shanghai, China; ²Department of Radiology, Zhongshan Hospital, Fudan University, Shanghai, China; ³Department of Liver Surgery and Transplantation, Liver Cancer Institute, Zhongshan Hospital, Fudan University, and Key Laboratory of Carcinogenesis and Cancer Invasion, Ministry of Education, Shanghai, China; ⁴Key Laboratory of Medical Epigenetics and Metabolism, Institutes of Biomedical Sciences, Fudan University, Shanghai, China; ⁵Department of Medical Imaging, Shanghai Medical College, Fudan University, Shanghai, China

Contributions: (I) Conception and design: H Chong, P Zhou, M Zeng; (II) Administrative support: M Zeng, C Yang; (III) Provision of study materials or patients: H Chong, C Yang; (IV) Collection and assembly of data: H Chong, P Zhou; (V) Data analysis and interpretation: H Chong, P Zhou; (VI) Manuscript writing: All authors; (VII) Final approval of manuscript: All authors.

[#]These authors contributed equally to this work.

Correspondence to: Mengsu Zeng, MD, PhD; Chun Yang, MD, PhD. Department of Radiology, Zhongshan Hospital, Fudan University, 180 Feng Lin Road, Shanghai 200032, China. Email: mengsu_zeng@163.com; dryangchun@hotmail.com.

Background: Whether microvascular invasion is a prognosis factor for small hepatocellular carcinoma (sHCC) is controversial, and a preoperatively predictive model based on gadoxetate disodium (Gd-EOB-DTPA) MRI is clinically needed for MVI in sHCC.

Methods: Between March 2012 and September 2020, 455 consecutive patients with pathologically confirmed HCC ≤ 3 cm who underwent hepatectomy and preoperative Gd-EOB-DTPA MRI were retrospectively enrolled. Univariate and multivariate logistic regression combined with cox regression were conducted to find the confounding factors in the cohorts. Propensity score matching (PSM) was employed to balance the biases between MVI and non-MVI groups. Nomogram with C-index visualized the predictive model of MVI.

Results: Multivariate logistic regression identified that 5 characteristics (AFP, tumor size, tumor margin, peritumoral enhancement, radiologic capsule) were markedly associated with MVI of sHCC and incorporated into the nomogram with excellent predictive performance in the training (AUC/C-index: 0.884/0.874, n=288), validation (AUC/C-index: 0.845/0.828, n=123) and test cohorts (AUC/C-index: 0.903/0.954, n=44). Before PSM, histologic MVI independently affected tumor recurrence (hazard ratio: 1.555, 95% CI: 1.055–2.293, P=0.026). However, due to the confounder of tumor size, there was a significant bias between MVI-positive and MVI-negative groups (propensity score: 0.249 \pm 0.105 vs. 0.179 \pm 0.106, P<0.001). Meanwhile, the frequency of MVI significantly increased as tumor size growing (P<0.001). After PSM, 70 of 79 MVI cases matched with 171 non-MVI (total 332), and no biases were observed between the two groups (propensity score: 0.238 \pm 0.104 vs. 0.217 \pm 0.109, P=0.186). Although the median recurrence time in non-MVI sHCC was still longer than that in MVI group (74.3 vs. 43.0 months, P=0.063), MVI was not an independent risk factor for RFS in sHCC. Additionally, MVI was not independently vulnerable to mortality in our population.

Conclusions: A preoperative model, mainly based on the peritumoral hallmarks of Gd-EOB-DTPA MRI, showed an excellent performance to predict the occurrence of MVI. Nevertheless, MVI was a potential but not an independent risk factor for recurrence and mortality in sHCC ≤ 3 cm.

[^] ORCID: 0000-0002-0299-9407.

Keywords: Gadoxetate disodium; hepatocellular carcinoma; magnetic resonance imaging; microvascular invasion; neoplasm prognosis

Submitted Dec 12, 2020. Accepted for publication Mar 05, 2021.

doi: 10.21037/atm-20-7952

View this article at: <http://dx.doi.org/10.21037/atm-20-7952>

Introduction

Hepatocellular carcinoma (HCC) is the sixth most prevalent neoplasm and the third leading cause of cancer death (1). The 5-year overall survival (OS) of HCC is approximately 10–20% (2-4), with 5-year recurrence rate after liver resection reaching 50–70% (5). Increasing evidence shows that microvascular invasion (MVI) impairs the surgical outcome (6,7), and tumor size is closely correlated to the incidence of MVI (7) and poor prognosis (8). This implies tumor size may be a potential confounder—a major threat to the retrospective study's validity—for MVI in predicting prognosis. Meanwhile, early diagnosis of MVI in patients with HCC, especially small HCC (sHCC), will enable clinicians to better understand its pathobiological behaviour for optimizing therapeutic regimens and improving long-term survival.

The definition of sHCC varies greatly owing to its confusing criteria of the maximum tumor diameter from 2 to 5 cm (9-13). Recent studies have indicated that tumor growth over 3 cm is a critical turning point towards more aggressive behaviour (10,12,13). MVI presents in 15–57.1% surgical specimens of HCC and is only visible under microscopy (14). But a wide resection margin is recommended for MVI-positive patients (15). Hence, the effective prediction of histopathological MVI and the identification of key prognostic indicators before surgery can tailor the initial treatment plan to achieve the maximum benefit in sHCC patients.

Recently, some preoperative imaging traits (e.g., peritumoral enhancement) and radiomics features (e.g., texture signatures) have shown great discrimination in the diagnosis of MVI (6,14-16). But few studies focus on the tumor size within 3 cm. Compared with extracellular agents, gadoxetate disodium (Gd-EOB-DTPA) with hepatocyte-specific properties can not only reflect the vascularity of HCC lesions, but also can effectively identify small/early HCC (17-19). Additionally, few studies (20,21) have noticed the application of the Liver Imaging Reporting and Data System (LI-RADS) in MVI or outcome, especially for sHCC patients underwent Gd-EOB-DTPA MRI.

Meanwhile, previous studies concerning MVI in HCC patients are retrospective analysis, which cannot avoid selective bias.

Therefore, this study aimed to explore the preoperative value of Gd-EOB-DTPA MRI based on LI-RARS for predicting MVI in patients with sHCC ≤ 3 cm, and to investigate the correlation between MVI and prognosis by propensity score matching (PSM). We present the following article in accordance with the TRIPOD reporting checklist (available at <http://dx.doi.org/10.21037/atm-20-7952>).

Methods

Study population

This retrospective, single-center, cohort study was conducted in accordance with the Declaration of Helsinki (as revised in 2013). The study was approved and informed consent was waived by the Ethical Review Committee of Zhongshan Hospital, Fudan University, Shanghai, China (approval No. B2018-236). Between March 2012 and September 2020, 455 consecutive patients with pathologically confirmed sHCC ≤ 3 cm underwent liver resection and preoperative Gd-EOB-DTPA MRI, who met the following inclusion criteria (*Figure 1A*): (I) without gross vascular invasion, bile duct tumor thrombosis or extrahepatic metastasis upon preoperative imaging; (II) without previous history of HCC-related treatments: radiotherapy, chemotherapy, transarterial chemoembolization (TACE), radiofrequency ablation (RFA), immunosuppressive therapy, liver resection or transplantation; (III) complete clinicoradiologic data (i.e., the pathologic report and laboratory indexes); (IV) MRI with sufficient image quality scanned within 1 month before hepatectomy. Besides, the frequency of MVI stratified by tumor size is plotted in *Figure 1B*.

Laboratory examinations and histopathology

Preoperative laboratory indexes (*Table 1*) comprised serum alpha-fetoprotein (AFP), viral hepatitis type B

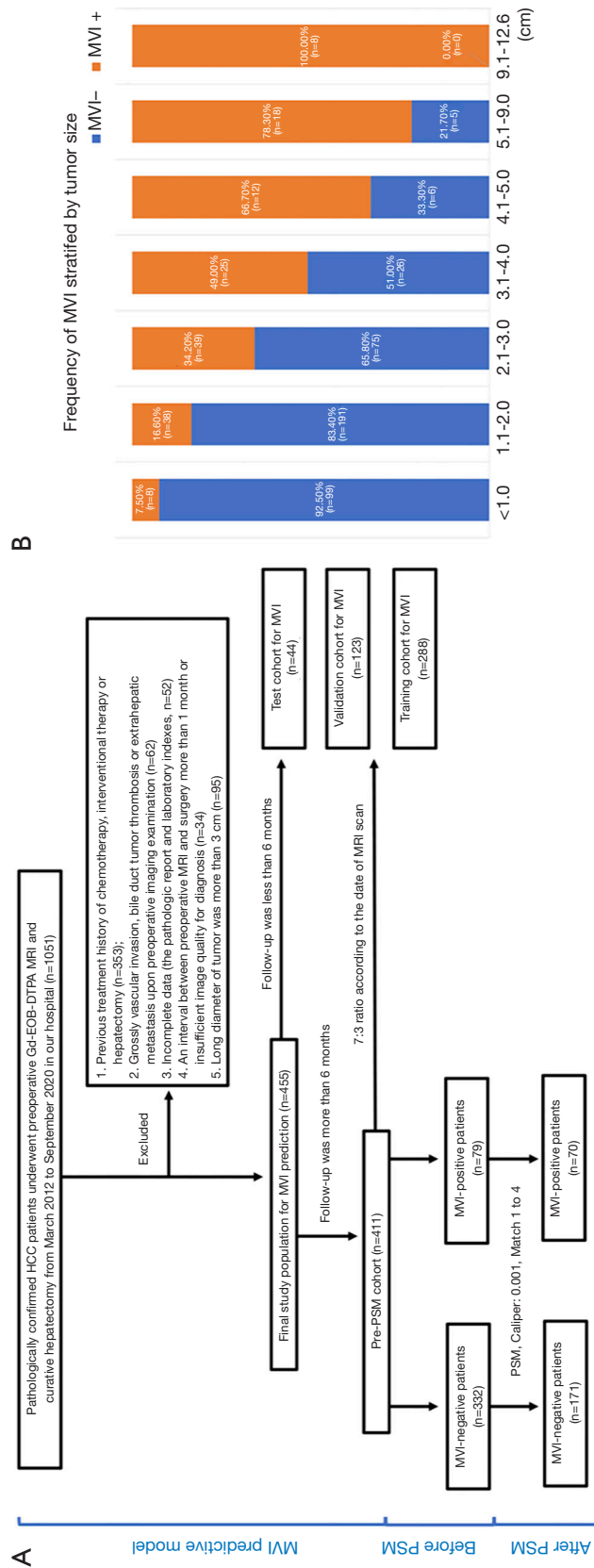


Figure 1 Flowchart of the study population. (A) the workflow of our study population before and after propensity score matching (PSM); (B) the frequency of MVI stratified by tumor size; (C) the distribution of propensity scores in MVI-negative and MVI-positive groups before and after PSM; (D) line plot of individual differences indicated that the standard difference of each covariate decreased significantly after matching; (E) histogram of standardized differences showed that the standard differences concentrated around 0 after PSM, indicating that the variables were balanced and the matching effect was excellent; (F) dot plot of standardized mean differences (SMD) demonstrated an excellent balance in terms of propensity score and the confounder (tumor size), as result of the corresponding SMD reaching 0 after PSM.

Table 1 Baseline characteristics for identifying MVI before and after PSM

Characteristics	Before PSM			After PSM		
	MVI negative (n=332)	MVI positive (n=79)	P	MVI negative (n=171)	MVI positive (n=70)	P
Age (years), mean ± SD	54.57±11.48	54.58±9.72	0.994	55.67±11.30	54.90±9.56	0.615
Sex (female/male)	49 (11.9)/283 (68.9)	12 (2.9)/67 (16.3)	0.923	20 (8.3)/151 (62.7)	10 (4.1)/60 (24.9)	0.580
Size (cm), mean ± SD	1.57±0.63	2.02±0.57	<0.001 [†]	1.83±0.60	1.95±0.57	0.112 [†]
≤1/1–2/>2 cm	88/178/66	6/35/38	<0.001	22/97/52	6/35/29	0.224
ES (I–II/III–IV)	218 (53.0)/114 (27.7)	38 (9.2)/41 (10.0)	0.004	112 (46.5)/59 (24.5)	36 (14.9)/34 (14.1)	0.042
Cirrhosis [†]	118 (28.7)/214 (52.1)	24 (5.8)/55 (13.4)	0.386	66 (27.4)/105 (43.6)	22 (9.1)/48 (19.9)	0.294
Ki-67 (%)	23.68 (18.05)	32.27 (21.79)	0.001 [†]	24.90 (17.78)	32.56 (22.34)	0.032 [†]
HBV or HCV [†]	71 (17.3)/261 (63.5)	14 (3.4)/65 (15.8)	0.470	52 (21.6)/119 (49.4)	13 (5.4)/57 (23.7)	0.060
HBV-DNA (≤10 ⁴ />10 ⁴)	242 (58.9)/90 (21.9)	51 (12.4)/28 (6.8)	0.141	119 (49.4)/52 (21.6)	45 (18.7)/25 (10.4)	0.423
Multifocality [†]	286 (69.6)/46 (11.2)	62 (15.1)/17 (4.1)	0.114	145 (60.2)/26 (10.8)	55 (22.8)/15 (6.2)	0.243
Anatomical resection [†]	304 (74.0)/28 (6.8)	67 (16.3)/12 (2.9)	0.069	161 (66.8)/10 (4.1)	58 (24.1)/12 (5.0)	0.006
Alpha-fetoprotein (≤20/20–400/>400 ng/mL)	200/103/29	34/32/13	0.012	111/43/17	31/31/8	0.008
TBIL (≤20.4/>20.4 μmol/L)	285 (69.3)/47 (11.4)	63 (15.3)/16 (3.9)	0.176	150 (62.2)/21 (8.7)	57 (23.7)/13 (5.4)	0.203
DBIL (≤20.4/>20.4 μmol/L)	268 (65.2)/64 (15.6)	57 (13.9)/22 (5.4)	0.092	140 (58.1)/31 (12.9)	51 (21.2)/19 (7.9)	0.117
ALB (>35/≤35 g/L)	323 (78.6)/9 (2.2)	79 (19.2)/0 (0.0)	0.139 [§]	167 (69.3)/4 (1.7)	70 (29.0)/0 (0)	0.462 [§]
ALT (≤50/>50 U/L)	275 (66.9)/57 (13.9)	68 (16.5)/11 (2.7)	0.485	139 (57.7)/32 (13.3)	61 (25.3)/9 (3.7)	0.272
AST (≤40/>40 U/L)	261 (63.5)/71 (17.3)	70 (17.0)/9 (2.2)	0.044	130 (53.9)/41 (17.0)	62 (25.7)/8 (3.3)	0.028
AKP (≤125/>125 U/L)	309 (75.2)/23 (5.6)	76 (18.5)/3 (0.7)	0.304	157 (65.1)/14 (5.8)	68 (28.2)/2 (0.8)	0.131
GGT (≤60/>60 U/L)	238 (57.9)/94 (22.9)	60 (14.6)/19 (4.6)	0.446	114 (47.3)/57 (23.7)	54 (22.4)/16 (6.6)	0.108
PALB (>250/≤250 mg/L)	79 (19.2)/253 (61.6)	14 (3.4)/65 (15.8)	0.246	38 (15.8)/133 (55.2)	12 (5.0)/58 (24.1)	0.377
PT (≤13.0/>13 s)	283 (68.9)/49 (11.9)	69 (16.8)/10 (2.4)	0.632	140 (58.1)/31 (12.9)	61 (25.3)/9 (3.7)	0.318
Child-Pugh (A/B)	316 (76.9)/16 (3.9)	75 (18.2)/4 (1.0)	0.928 [§]	161 (66.8)/10 (4.1)	66 (27.4)/4 (1.7)	1.000 [§]
Nodule in nodule [†]	313 (76.2)/19 (4.6)	76 (18.5)/3 (0.7)	0.494	160 (66.4)/11 (4.6)	67 (27.8)/3 (1.2)	0.731 [§]
Fat deposition [†]	232 (56.4)/100 (24.3)	54 (13.1)/25 (6.1)	0.791	114 (47.3)/57 (23.7)	46 (19.1)/24 (10.0)	0.887
Necrosis [†]	283 (68.9)/49 (11.9)	57 (13.9)/22 (5.4)	0.006	139 (57.7)/32 (13.3)	54 (22.4)/16 (6.6)	0.465
Hemorrhage [†]	286 (69.6)/46 (11.2)	69 (16.8)/10 (2.4)	0.780	145 (60.2)/26 (10.8)	62 (25.7)/8 (3.3)	0.445
Ascites [†]	316 (76.9)/16 (3.9)	75 (18.2)/4 (1.0)	0.928 [§]	162 (67.2)/9 (3.7)	66 (27.4)/4 (1.7)	1.000 [§]
Nonim APHE [†]	71 (17.3)/261 (63.5)	26 (6.3)/53 (12.9)	0.030	38 (15.8)/133 (55.2)	22 (9.1)/48 (19.9)	0.133
Mosaic architecture [†]	327 (79.6)/5 (1.2)	77 (18.)/2 (0.5)	0.527 [§]	169 (70.1)/2 (0.8)	68 (28.2)/2 (0.8)	0.707 [§]
Targetoid [†]	304 (74.0)/28 (6.8)	74 (18.0)/5 (1.2)	0.536	153 (63.5)/18 (7.5)	66 (27.4)/4 (1.7)	0.239
HBV hypointensity [†]	9 (2.2)/323 (78.6)	3 (0.7)/76 (18.5)	0.606	3 (1.2)/168 (69.7)	3 (1.2)/67 (27.8)	0.490
Non-smooth margin [†]	226 (55.0)/106 (25.8)	15 (3.6)/64 (15.6)	<0.001	114 (47.3)/57 (23.7)	15 (6.2)/55 (22.8)	<0.001
Non-peripheral washout [†]	42 (10.2)/290 (70.6)	7 (1.7)/72 (17.5)	0.350	19 (7.9)/152 (63.1)	6 (2.5)/64 (26.6)	0.557

Table 1 (continued)

Table 1 (continued)

Characteristics	Before PSM			After PSM		
	MVI negative (n=332)	MVI positive (n=79)	P	MVI negative (n=171)	MVI positive (n=70)	P
LI-RADS (3/4/5)	24/94/214	7/25/47	0.698	8/52/111	7/21/42	0.294
Enhancing capsule (intact/incomplete/absent)	236/40/56	15/33/31	<0.001	118/26/27	13/27/30	<0.001
Peritumoral enhancement [†]	269 (65.5)/63 (15.3)	31 (7.5)/48 (11.7)	<0.001	129 (53.5)/42 (17.4)	29 (12.0)/41 (17.0)	<0.001
Peritumoral hypointensity [†]	295 (71.8)/37 (9.0)	50 (12.2)/29 (7.1)	<0.001	147 (61.0)/24 (10.0)	44 (18.3)/26 (10.8)	<0.001
Propensity score	0.179±0.106	0.249±0.105	<0.001	0.217±0.109	0.238±0.104	0.186

Continuous and categorical variables were expressed as mean ± standard deviation and numbers (proportions), respectively. [†], absent/present; [‡], Mann-Whitney U test; [§], continuity correction. The other categorical variables, Chi-square test; the other numeric variables, independent samples *t*-test. MVI, microvascular invasion; PSM, propensity score matching; ES, Edmondson-Steiner grade; HBV, hepatitis B virus; HCV, hepatitis C virus; HBV-DNA, deoxyribonucleic acid of hepatitis B virus; ALT, alanine aminotransferase; AST, aspartate aminotransferase; TBIL, total bilirubin; DBIL, direct bilirubin; AKP, alkaline phosphatase; GGT, γ -glutamyl transpeptidase; ALB, albumin; PALB, prealbumin; PT, prothrombin time; APHE, arterial phase hyperenhancement; HBP, hepatobiliary phase; LI-RADS, Liver Imaging Reporting and Data System.

(HBV), anti-hepatitis C virus, HBV-DNA loads, alanine aminotransferase, aspartate aminotransferase, total bilirubin, direct bilirubin, alkaline phosphatase, γ -glutamyl transpeptidase, albumin, prealbumin, and prothrombin time.

Histopathological characteristics included tumor size, tumor number, Edmondson-Steiner grade, MVI status, Ki-67 protein expression, liver fibrosis grade based on the Scheuer scoring system. MVI is defined as the cancerous thrombosis of portal vein, hepatic vein, or large capsular vessels lined with endothelium in the contiguous hepatic parenchyma (13-16). MVI grades are stratified as M0 (no MVI), M1 (invasion of micro-vessels up to five at peritumoral parenchyma within 1 cm from tumor surface) and M2 (MVI >5 sites or at >1 cm away from tumor surface) (13,16,22). These indexes were independently assessed by two experienced abdominal pathologists. In case of disagreement, a consensus was reached after discussion.

Meanwhile, the Barcelona Clinic Liver Cancer (BCLC) staging classification, the tumor-node-metastasis (TNM) system of the American Joint Committee on Cancer (8th Edition), the preoperative and postoperative Early Recurrence After Surgery for Liver tumor (ERASL-pre, ERASL-post) models (23) were enrolled into the prognostic study.

Gd-EOB-DTPA MRI

A 1.5T MRI scanner (Magnetom Aera, Siemens Healthcare,

Erlangen, Germany) equipped with phased-array coils was performed on all eligible patients. Gd-EOB-DTPA (Primovist, Bayer Pharma, Berlin, Germany) was injected intravenously at a dosage of 0.025 mmol/kg at a rate of 1.5 mL/s, and immediately flushed by 20-mL saline. The conventional MRI sequences of upper abdomen were as below: free-breath diffusion-weighted imaging with b values of 0 and 500 s/mm², axial T2-weighted imaging with fat suppression, in-phase and opposed-phase T1-weighted imaging (T1WI), pre- and post-contrast dynamic three-dimensional volumetric-interpolated breath-hold examination. When Gd-EOB-DTPA reached the ascending aorta (at 20–30 s after injection), the acquisition of arterial phase (AP) was automatically triggered. The subsequent portal venous phase (PVP), transitional phase (TP), and hepatobiliary phase (HBP) were collected at 60–70 s, 180 s and 20 min after injection, respectively. Detailed MRI parameters are shown in Table S1.

MRI hallmarks

Two radiologists with 8 and 15 years of abdominal MRI experience, who were blinded to MVI status, independently reviewed MRI morphologic hallmarks. Inconsistent diagnoses were discussed to make a final decision.

The major features of LI-RADS (version 2018) (24,25) were as follows: (I) tumor size, the longest axis diameter measured on HBP images; (II) enhancing capsule on PVP or TP images; (III) non-peripheral washout; (IV) non-

rim arterial phase hyperenhancement (APHE). LI-RADS categories were calculated by these major features. The ancillary features of LI-RADS (24) were as below: (I) necrosis; (II) hemorrhage; (III) fat deposition; (IV) targetoid architecture; (V) nodule-in-nodule architecture; (VI) mosaic architecture; (VII) hypointensity of tumor on HBP images. Non-LI-RADS morphologic hallmarks comprised (I) non-smooth tumor margin, (II) peritumoral enhancement on AP images (26), (III) peritumoral hypointensity on HBP images (26), (VI) ascites. The definition of MRI hallmarks is shown in [Supplementary methods](#).

Follow-up and data-grouping

Consistent follow-up with laboratory and imaging examinations was performed at intervals of 3 to 6 months after curative resection. Pathologic reports of recurrent/metastatic lesions were also included in the follow-up items, if applicable. The imaging follow-up was conducted by two radiologists, mainly based on the modified Response Evaluation Criteria in Solid Tumors (27) and the reliable diagnosis of HCC by “washin and washout” imaging pattern (1). Specifically, image-guided recurrent/metastatic lesion was determined by metabolic (i.e., maximum standardized uptake value beyond 2.5) or anatomic (e.g., altered lesion size, morphology, diffusivity, signal intensity, and contrast enhancement) pattern recognition of the *de novo* or original lesion. Notably, the abnormally elevated metabolism was regarded as an important auxiliary determinant of progression.

Patients were censored on September 26, 2020. The date of operation, recurrence, metastasis, death, and the last follow-up were recorded to calculate OS and recurrence-free survival (RFS). Among the 455 enrolled patients, 411 consecutive patients completed at least 6 months of follow-up, named as Pre-PSM cohort, and were used for MVI, PSM and prognosis analyses. In terms of MVI prediction, the 411 patients were divided into training and validation sets, according to the date of MRI examination at a ratio of 7:3. The remaining 44/455 population was classified as the test set to further verify the predictive performance of MVI model. Furthermore, the dataset of the eligible patients after PSM was denoted by post-PSM cohort.

Statistical analyses

Analyses were performed with IBM SPSS Statistics software (version 25.0; IBM Corporation, Armonk, NY, USA) or

R (version 3.6.1, <https://www.r-project.org>) software. Continuous and categorical variables were expressed as mean \pm standard deviation and numbers (proportions), respectively. Independent sample *t*-test, Mann Whitney U test, Chi-square test, Fisher's exact test and logistic regression was applied to the univariate analysis, as appropriate. The intra-observer consistency of radiologic features was evaluated by McNemar's and Kappa tests (κ statistics <0.40, poor; 0.40–0.59, fair; 0.60–0.80, good; and 0.80–1.00, excellent). $P < 0.05$ was considered statistically significant.

Multivariate logistic regression (backward stepwise: ward) was used to identify the independent predictors of MVI. The discrimination of prediction model was quantified by the area under receiver operating characteristic curve (AUC) as well as Harrell's C-index. The consistency between the predicted MVI model and the actual MVI state was evaluated by calibration curve analysis. With Kaplan-Meier analysis of two-sided log-rank test, survival curves were stratified by MVI status. The sample size was estimated by the reported median RFS of MVI and non-MVI cohorts (6). The detailed calculation is illustrated in [Supplementary methods](#), and our sample sizes meets the statistical requirements. Multivariate Cox regression (forward stepwise: maximum like-hood ratio) determined the independent predictors of recurrence/mortality.

Multivariate logistic and Cox regressions were combined to identify confounding factors (28), and PSM was implemented to reduce confounders (28–30). Meanwhile, three R packages “PS MATCHING 3.03”, “SPSS Statistics R Essentials 22.0” and “R-2.15.3-win” were installed in SPSS for PSM analysis (29). The caliper and the optimal match ratio were set at 0.001 and 1:4, respectively. After PSM, the propensity score ensured that no significant differences were found in the baseline contexts of the matched cases, which was visualized in [Figure 1C,B,C,D,E,F](#).

Results

455 eligible sHCC patients' clinicoradiologic hallmarks for identifying MVI

Baseline characteristics of the training (n=288), validation (n=123) and test (n=44) cohorts for preoperative MVI prediction are shown in [Table S2](#). The representative images of non-MVI and MVI cases are displayed in [Figure 2](#). Multivariate logistic regression indicated that AFP >20 ng/mL, larger tumor size, incomplete or absent capsule

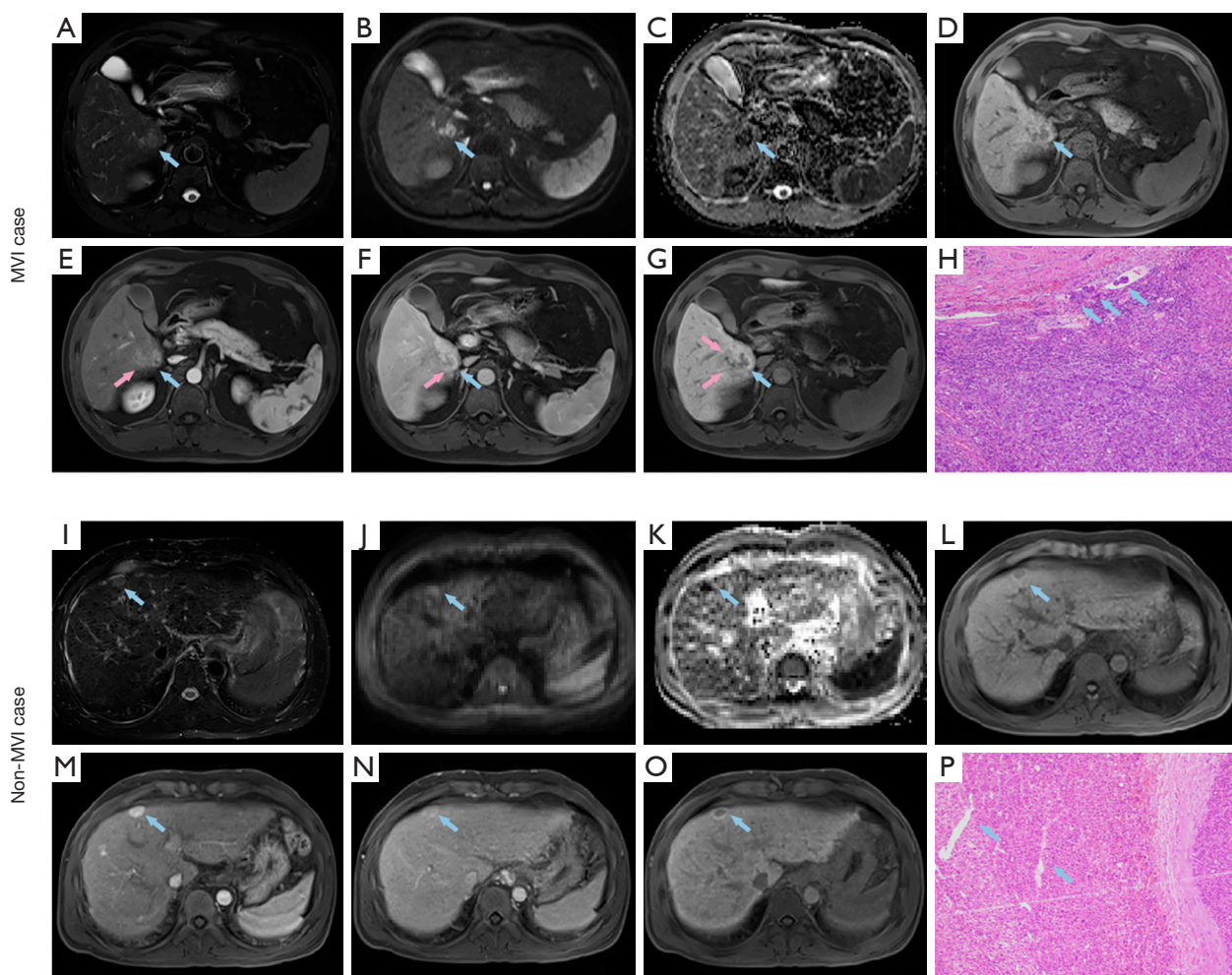


Figure 2 Representative images of MVI and non-MVI cases. MVI case: Gd-EOB-DTPA MRI displayed an unsmooth lesion (A-G, blue arrows) in hepatic segment VI, with the following architectures: slight hyperintensity of T2-weighted images (A), restricted diffusion (B,C), wedge-shaped peritumoral enhancement on arterial phase images (E, red arrow), absent/incomplete capsule enhancement on transitional phase images (F, red arrow), and peritumoral hypointensity on hepatobiliary phase (G, red arrow). MVI was diagnosis by hematoxylin and eosin (HE, $\times 100$) sample: multiple tumor thrombi of microvasculature (H, blue arrows) were detected in the triangle region between the liver membrane (the left upper corner), normal liver parenchyma (the right upper corner) and the infiltrating HCC lesion without tumor capsule (below). Non-MVI case: The lesion located at hepatic segment IV also detected slight hyperintensity on T2-weighted images (I) and restricted diffusion (J and K), but showed a well-circumscribed smooth tumor edge (L) without peritumoral enhancement and hypointensity (M/O, arrows), intact capsule enhancement (N, O, arrows). HE (100 \times) signified that no tumor thrombus was detected in microvascular system (P, arrows), which was distributed the normal liver tissue (the left side) that was separated from HCC lesion (the right side) by an intact tumor capsule.

enhancement, peritumoral enhancement and non-smooth margin were significantly susceptible to MVI ($P < 0.05$), both in training and Pre-PSM cohorts. These five independent predictors were visualized as a nomogram (Figure 3A) that was further evaluated by calibration curves of training, validation and test cohorts (Figure 3B,C,D). The sensitivity, specificity, cut-off, AUC and C-index of the nomogram

were as follows: 0.810, 0.848, 0.237, 0.884 (95% CI: 0.838–0.931; $P < 0.001$; Figure 3E) and 0.874 (95% CI: 0.826–0.921) in the training cohort; 0.762, 0.873, 0.255, 0.845 (95% CI: 0.734–0.956; $P < 0.001$; Figure 3F) and 0.828 (95% CI: 0.703–0.953) in the validation cohort; 1.000, 0.757, 0.182, 0.903 (95% CI: 0.813–0.994; $P = 0.001$; Figure 3G) and 0.954 (95% CI: 0.897–1.010) in the test cohort. The formula of

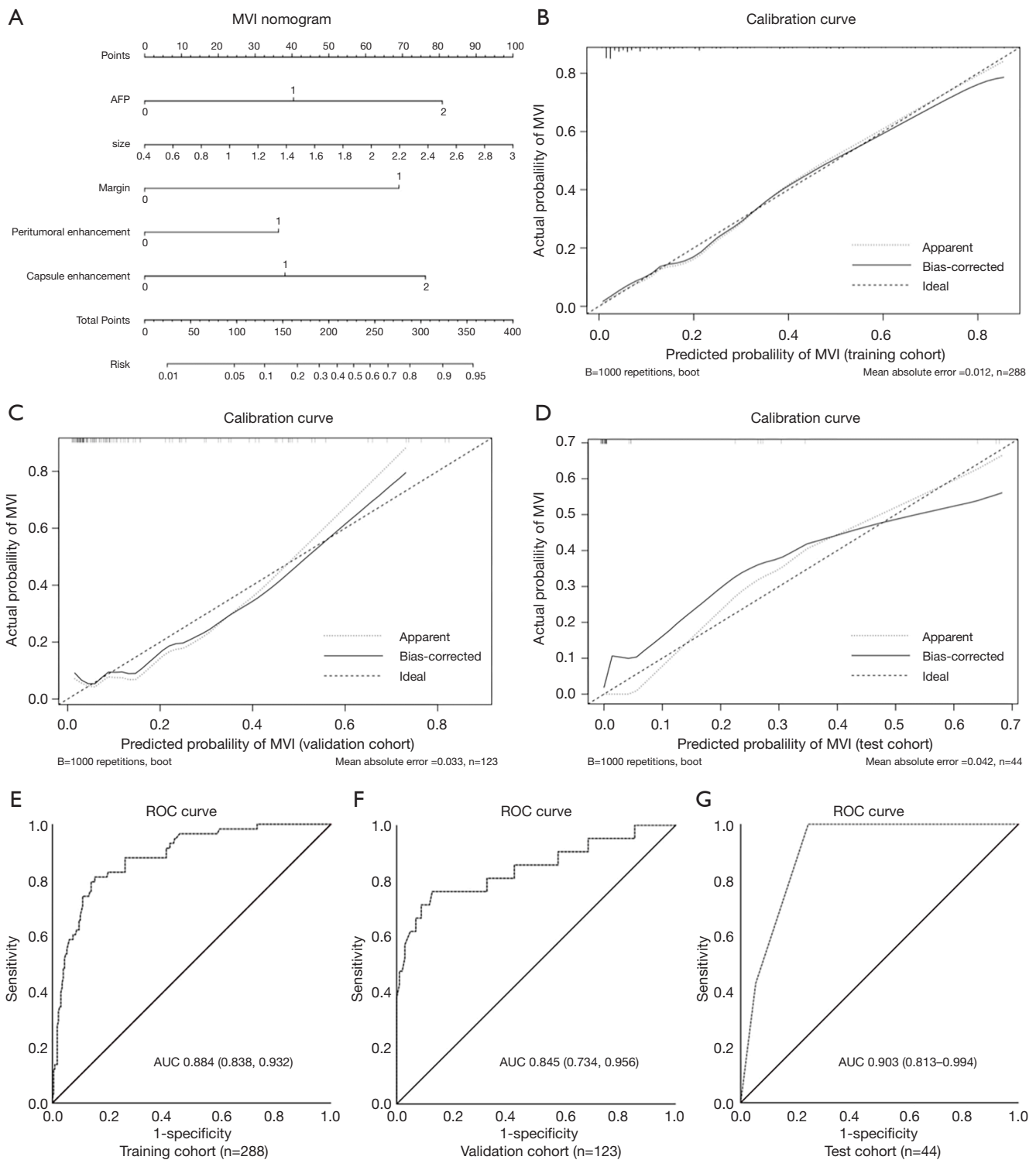


Figure 3 The nomogram, calibration and receiver operating characteristic curves for predicting MVI. The predictive model for MVI in the training cohort was visualized as nomogram (A). The calibration and receiver operating characteristic curves of the training, validation and test cohorts for MVI prediction were plotted in (B) and (E), in (C) and (F), and in (D) and (G), respectively.

the predictive MVI nomogram were illustrated as below:

$$\begin{aligned}
 Y(MVI) = & 0.804 \text{ Tumor size} + 1.236 \text{ Tumor margin}(0, \text{smooth}; 1, \text{nonsmooth}) \\
 & + 0.814 \text{ Peritumoral enhancement}(0, \text{absent}; 1, \text{present}) \\
 & + 1.027 \text{ AFP}(0 \leq 20 \text{ ng/mL}; 1: 20 \sim 400 \text{ ng/mL}) \\
 & + 1.468 \text{ AFP}(> 400 \text{ ng/mL}) \\
 & + 1.891 \text{ Capsule enhancement}(0, \text{absent}; 1, \text{incomplete}) \\
 & + 1.768 \text{ Capsule enhancement}(2, \text{intact})
 \end{aligned}$$

[1]

Meanwhile, the AUC and C-index yielded 0.875 (95% CI: 0.828–0.921; $P < 0.001$) and 0.863 (95% CI: 0.815–0.911) in Pre-PSM cohort, and reached 0.824 (95% CI: 0.761–0.887; $P < 0.001$) and 0.826 (95% CI: 0.764–0.887) in post-PSM cohort. Additionally, AFP > 20 ng/mL, non-smooth margin, incomplete or absent capsule were robust independent risk factors for MVI after PSM.

411 sHCC patients' clinicoradiologic hallmarks before PSM

Pathologically confirmed 79 (19.2%) MVI-positive and 332 (80.8%) MVI-negative patients in our hospital. Baseline characteristics of the two groups in Pre-PSM cohort are shown in *Table 1*. Owing to the conspicuous bias, the clinicoradiologic data for 11 of the 37 variables differed significantly ($P < 0.05$), with an unmatched propensity score between MVI and non-MVI cases (0.249 ± 0.105 vs. 0.179 ± 0.106 , $P < 0.001$).

Confounders between MVI and prognosis

To investigate whether the existing confounders could lead to any bias, univariate logistic and Cox regressions were first conducted on the Pre-PSM dataset to filter out the variables related to MVI and recurrence/mortality (*Table 2*), respectively. Multivariate logistic regression showed that larger tumor size, AFP > 20 ng/mL, non-smooth margin, peritumoral enhancement, incomplete or absent capsule enhancement were significantly positive associated with MVI ($P < 0.05$, *Table 3*). Meanwhile, larger tumor size, MVI and prealbumin < 250 mg/L markedly suffered from postoperative recurrence by the multivariate cox analysis ($P < 0.05$). Moreover, the older, HBV-DNA loads $> 10^4$, alkaline phosphatase > 125 U/L, peritumoral enhancement, and peritumoral hypointensity were independent risk factors for mortality ($P < 0.05$).

Therefore, tumor size was selected out to be the only confounder of MVI for predicting recurrence in our study population. Additionally, the frequency of MVI dramatically

increased as tumor size growing (*Figure 1B*, $P < 0.001$): ≤ 1 cm, 7.5% (8/107); 1.1–2 cm, 16.6% (38/229); 2.1–3 cm, 34.2% (39/114); 3.1–4 cm, 49.0% (25/51); 4.1–5 cm, 66.7% (12/18); 5.1–9 cm, 78.3% (18/23); 9.1–12.6 cm, 100% (8/8).

241 matched sHCC patients' clinicoradiologic hallmarks after PSM

Though reducing the confounder—tumor size, 70 of 79 MVI-positive cases were matched with 171 of 332 MVI-negative subjects. The distribution of propensity scores in MVI-negative and MVI-positive groups before and after PSM is shown in *Figure 1C*. After PSM, the standard difference of each covariate decreased significantly (*Figure 1D*), the standard difference was concentrated around 0 (*Figure 1E*), and the standardized mean difference of tumor size and propensity score decreased to 0 (*Figure 1F*), all of which indicated an excellent matching effect. Consequently, no bias was found for 37 clinicoradiologic characteristics in the matched MVI and non-MVI groups (propensity score: 0.238 ± 0.104 vs. 0.217 ± 0.109 , $P = 0.186$; *Table 1*).

Prognostic value of MVI

Univariate Cox analysis demonstrated that MVI exerted an adverse impact on RFS of Pre-PSM (HR: 1.835, 95% CI: 1.264–2.662, $P = 0.001$) and Post-PSM (HR: 1.493, 95% CI: 0.976–2.283, $P = 0.065$) cohorts. Meanwhile, the Kaplan-Meier curve (*Figure 4*) signified that non-MVI patients benefited in a longer median RFS than that of MVI patients, whether before PSM (85.4 vs. 43.0 months, $P = 0.001$) or after PSM (74.3 vs. 43.0 months, $P = 0.063$). Baseline characteristics of recurrent prediction models before and after PSM are presented in *Table S3*.

Before PSM, MVI (HR 1.555, 95% CI: 1.055–2.293, $P = 0.026$), prealbumin < 250 mg/L (HR 1.625, 95% CI: 1.037–2.548, $P = 0.034$) and tumor size (HR 1.412, 95% CI: 1.078–1.849, $P = 0.012$) were independently adverse to RFS. The formulas are as below, with AUC of 0.662 (95% CI: 0.604–0.719, $P < 0.001$). Notably, the clinicoradiologic model outperformed the BCLC, TNM, ERASL-pre and ERASL-post models in predicting RFS (*Table 4*).

$$\begin{aligned}
 Y(RFS, \text{Pre-PSM}) = & 0.441 \text{ MVI}(0: \text{absent}; 1: \text{present}) \\
 & + 0.486 \text{ prealbumin}(0: > 250 \text{ mg/L}; 1: \leq 250 \text{ mg/L}) \\
 & + 0.345 \text{ tumor size}(cm)
 \end{aligned}$$

[2]

After PSM, prealbumin < 250 mg/L (HR 1.980, 95% CI: 1.082–3.660, $P = 0.027$), γ -glutamyl transpeptidase > 60 U/L

Table 2 Univariate logistic and Cox regressions for confounders based on MVI status before and after PSM

Variables	Before PSM (univariate analysis, n=411)					After PSM (univariate analysis, n=241)				
	Logistic regression (MVI)		Cox regression (RFS)		Cox regression (OS)	Logistic regression (MVI)		Cox regression (RFS)		Cox regression (OS)
	OR (95% CI)	P	HR (95% CI)	P	HR (95% CI)	P	OR (95% CI)	P	HR (95% CI)	P
MVI [†]	-	-	1.835 (1.264–2.662)	0.001	2.646 (1.155–6.063)	0.021	-	-	1.493 (0.976–2.283)	0.065
Age, mean (SD), years	1.000 (0.978–1.022)	0.994	1.020 (1.004–1.037)	0.012	1.054 (1.019–1.089)	0.002	0.993 (0.968–1.019)	0.614	1.018 (0.998–1.038)	0.075
Sex (male/female)	0.967 (0.487–1.918)	0.923	0.826 (0.523–1.303)	0.411	0.766 (0.262–2.244)	0.628	0.795 (0.351–1.797)	0.581	0.734 (0.422–1.277)	0.273
Size (cm)	2.952 (1.979–4.404)	<0.001	1.549 (1.197–2.006)	0.001	1.658 (0.906–3.034)	0.101	1.429 (0.891–2.294)	0.139	1.345 (0.954–1.897)	0.091
ES (III–IV/I–II)	2.063 (1.256–3.388)	0.004	1.478 (1.057–2.067)	0.022	1.680 (0.753–3.746)	0.205	1.793 (1.019–3.154)	0.043	1.463 (0.973–2.200)	0.068
Cirrhosis [†]	1.264 (0.744–2.146)	0.386	0.862 (0.609–1.221)	0.403	1.515 (0.601–3.818)	0.378	1.371 (0.759–2.477)	0.295	0.974 (0.636–1.492)	0.904
Ki-67 (%)	1.022 (1.010–1.034)	<0.001	1.007 (0.998–1.016)	0.112	1.020 (1.002–1.039)	0.034	1.020 (1.005–1.034)	0.007	1.002 (0.991–1.012)	0.762
HBV or HCV [†]	1.263 (0.670–2.362)	0.471	0.872 (0.555–1.370)	0.552	0.562 (0.208–1.520)	0.256	1.916 (0.966–3.800)	0.063	0.827 (0.494–1.386)	0.472
HBV-DNA (>10 ⁴ ≤10 ⁶) [†]	1.476 (0.877–2.485)	0.143	1.247 (0.869–1.787)	0.231	3.037 (1.360–6.784)	0.007	1.271 (0.707–2.288)	0.423	1.386 (0.903–2.127)	0.135
Multifocality [†]	1.705 (0.917–3.170)	0.092	1.603 (1.058–2.428)	0.026	0.039 (0–5.001)	0.190	1.521 (0.750–3.085)	0.245	1.677 (1.021–2.755)	0.041
Anatomical resection [†]	1.466 (0.705–3.046)	0.306	1.001 (0.584–1.716)	0.997	1.781 (0.777–4.081)	0.172	1.440 (0.608–3.409)	0.407	0.932 (0.510–1.700)	0.817
AFP, ng/mL		0.014		0.986		0.535		0.009		0.623
≤20	Reference		Reference		Reference		Reference		Reference	
20–400	1.828 (1.067–3.130)	0.028	1.016 (0.705–1.464)	0.934	1.339 (0.555–3.232)	0.516	2.581 (1.403–4.750)	0.002	0.866 (0.551–1.361)	0.533
>400	2.637 (1.248–5.574)	0.011	0.966 (0.555–1.680)	0.902	1.878 (0.598–5.905)	0.281	1.685 (0.665–4.270)	0.271	0.737 (0.372–1.461)	0.382
TBIL (>20.4/≤20.4 μmol/L)	1.540 (0.821–2.890)	0.179	1.237 (0.768–1.993)	0.382	1.043 (0.310–3.511)	0.946	1.629 (0.765–3.469)	0.206	1.470 (0.829–2.604)	0.187
DBIL (>20.4/≤20.4 μmol/L)	1.616 (0.921–2.836)	0.094	1.226 (0.825–1.822)	0.313	0.955 (0.356–2.562)	0.928	1.682 (0.874–3.239)	0.119	1.304 (0.808–2.105)	0.278
ALB (>35/≤35 g/L)	0	0.999	1.721 (0.636–4.661)	0.285	2.037 (0.275–15.105)	0.486	0	0.999	1.161 (0.286–4.722)	0.835
ALT (>50/≤50 U/L)	0.780 (0.388–1.568)	0.486	1.237 (0.801–1.910)	0.337	2.171 (0.899–5.239)	0.085	0.641 (0.288–1.424)	0.275	1.193 (0.704–2.023)	0.512
AST (>40/≤40 U/L)	0.473 (0.225–0.993)	0.048	1.204 (0.795–1.825)	0.380	1.775 (0.736–4.284)	0.202	0.409 (0.181–0.925)	0.032	1.235 (0.752–2.028)	0.404
AKP (>125/≤125 U/L)	0.530 (0.155–1.813)	0.312	1.202 (0.611–2.364)	0.595	2.757 (0.941–8.074)	0.064	0.330 (0.073–1.491)	0.150	1.441 (0.696–2.981)	0.325
GGT (>60/≤60 U/L)	0.802 (0.454–1.416)	0.446	1.261 (0.881–1.804)	0.205	1.5333 (0.671–3.504)	0.311	0.593 (0.312–1.126)	0.110	1.432 (0.938–2.186)	0.096
PALB (≤250/>250 mg/L)	1.450 (0.772–2.723)	0.248	1.695 (1.083–2.655)	0.021	2.309 (0.688–7.752)	0.176	1.381 (0.673–2.833)	0.379	2.031 (1.107–3.728)	0.022
PT (>13/≤13 s)	0.837 (0.404–1.736)	0.633	1.018 (0.626–1.653)	0.944	0.849 (0.253–2.850)	0.791	0.666 (0.299–1.484)	0.320	1.296 (0.765–2.195)	0.335
Child-Pugh (B/A)	1.053 (0.342–3.242)	0.928	1.633 (0.830–3.213)	0.155	0.831 (0.112–6.154)	0.856	0.976 (0.296–3.222)	0.968	1.153 (0.504–2.640)	0.736

Table 2 (continued)

Table 2 (continued)

Variables	Before PSM (univariate analysis, n=411)				After PSM (univariate analysis, n=241)				
	Logistic regression (MVI)	Cox regression (RFS)	HR (95% CI)	P	Logistic regression (OS)	Cox regression (MVI)	OR (95% CI)	P	Cox regression (RFS)
Nodule in nodule [†]	0.650 (0.188–2.254)	0.497	0.971 (0.454–2.079)	0.941	0.046 (0–139.683)	0.451	0.651 (0.176–2.409)	0.521	0.995 (0.403–2.453)
Fat deposition [†]	1.074 (0.633–1.823)	0.791	1.060 (0.741–1.518)	0.749	0.757 (0.301–1.909)	0.556	1.043 (0.580–1.877)	0.887	0.962 (0.623–1.485)
Necrosis [†]	2.229 (1.251–3.973)	0.007	0.849 (0.542–1.329)	0.474	0.841 (0.287–2.467)	0.752	1.287 (0.654–2.534)	0.465	0.626 (0.354–1.106)
Hemorrhage [†]	0.901 (0.433–1.875)	0.780	1.607 (1.042–2.480)	0.032	1.765 (0.658–4.731)	0.259	0.720 (0.309–1.678)	0.446	1.527 (0.902–2.585)
Ascites [†]	1.053 (0.342–3.242)	0.928	1.424 (0.724–2.802)	0.306	0.656 (0.154–2.795)	0.569	1.091 (0.325–3.666)	0.888	1.015 (0.443–2.326)
Nonim APHE [†]	0.555 (0.324–0.949)	0.032	0.783 (0.541–1.135)	0.197	0.624 (0.267–1.459)	0.276	0.623 (0.335–1.159)	0.135	1.087 (0.678–1.743)
Mosaic architecture [†]	1.699 (0.323–8.921)	0.531	0.047 (0.000–5.961)	0.216	0.048 (0–14212.712)	0.637	2.485 (0.343–18.002)	0.368	0.048 (0–29.068)
Targetoid [†]	0.734 (0.274–1.964)	0.538	1.086 (0.612–1.928)	0.778	1.501 (0.446–5.048)	0.511	0.515 (0.168–1.581)	0.246	0.979 (0.490–1.958)
HBP hypointensity [†]	1.417 (0.375–5.358)	0.608	0.612 (0.195–1.923)	0.401	0.047 (0–1017.030)	0.549	2.507 (0.494–12.736)	0.268	0.337 (0.047–2.432)
Non-smooth margin [†]	9.097 (4.954–16.704)	<0.001	1.420 (1.016–1.984)	0.040	2.509 (1.072–5.870)	0.034	7.333 (3.815–14.096)	<0.001	1.304 (0.868–1.960)
Non-peripheral washout [†]	1.490 (0.643–3.453)	0.353	0.843 (0.513–1.384)	0.499	1.357 (0.319–5.777)	0.679	1.333 (0.509–3.493)	0.558	1.025 (0.531–1.979)
LI-RADS		0.699		0.751		0.582		0.310	0.704
LR-3	Reference	Reference	Reference	Reference	Reference	Reference	Reference	Reference	Reference
LR-4	0.912 (0.352–2.359)	0.849	0.848 (0.445–1.616)	0.617	0.572 (0.148–2.217)	0.419	0.462 (0.149–1.434)	0.181	0.845 (0.347–2.058)
LR-5	0.753 (0.306–1.851)	0.536	0.797 (0.435–1.461)	0.463	0.515 (0.147–1.798)	0.298	0.432 (0.148–1.267)	0.126	1.028 (0.444–2.382)
Capsule enhancement	<0.001	<0.001	0.009	0.032	0.032	<0.001	<0.001	<0.001	0.019
Incomplete/intact	12.980 (6.470–26.042)	<0.001	1.680 (1.104–2.556)	0.015	3.236 (1.214–8.627)	0.019	9.426 (4.294–20.690)	<0.001	1.628 (0.987–2.686)
Absent/intact	8.710 (4.404–17.223)	<0.001	1.696 (1.136–2.530)	0.010	2.990 (1.122–7.969)	0.029	10.085 (4.653–21.860)	<0.001	1.930 (1.187–3.138)
Peritumoral enhancement [†]	6.611 (3.898–11.214)	<0.001	1.653 (1.168–2.340)	0.005	3.543 (1.573–7.981)	0.002	4.342 (2.409–7.829)	<0.001	1.584 (1.050–2.389)
Peritumoral hypointensity [†]	4.624 (2.612–8.186)	<0.001	1.697 (1.143–2.521)	0.009	2.376 (1.016–5.557)	0.046	3.619 (1.891–6.926)	<0.001	1.442 (0.911–2.281)

[†], present/absent. MVI, microvascular invasion; PSM, propensity score matching; ES, Edmondson-Steiner grade; HBV, hepatitis B virus; HCV, hepatitis C virus; HBV-DNA, deoxyribonucleic acid of hepatitis B virus; ALT, alanine aminotransferase; AST, aspartate aminotransferase; TBIL, total bilirubin; DBIL, direct bilirubin; AKP, alkaline phosphatase; GGT, γ -glutamyl transpeptidase; ALB, albumin; PALB, prealbumin; PT, prothrombin time; APHE, arterial phase hyperenhancement; HBP, hepatobiliary phase; LI-RADS, Liver Imaging Reporting and Data System.

Table 3 Multivariate logistic analysis for predicting MVI before and after PSM

Variables	Before PSM				After PSM	
	Training cohort		Training & validation cohorts (pre-PSM cohort)		(post-PSM cohort)	
	OR (95% CI)	P	OR (95% CI)	P	OR (95% CI)	P
AFP, ng/mL		0.011		0.020		0.040
≤20	Reference		Reference		Reference	
20–400	2.793 (1.249–6.246)	0.012	2.081 (1.050–4.122)	0.036	2.347 (1.139–4.835)	0.021
>400	4.342 (1.308–14.406)	0.016	3.580 (1.287–9.956)	0.015	2.623 (0.842–8.172)	0.096
DBIL (>20.4/≤20.4 μmol/L)	–	–	1.862 (0.909–3.813)	0.089	–	–
ES grade (III–IV/I–II)	–	–	1.758 (0.936–3.305)	0.080	–	–
Tumor size (cm)	2.235 (1.240–4.028)	0.007	2.187 (1.333–3.587)	0.002	–	–
Non-smooth margin [†]	3.443 (1.425–8.319)	0.011	3.429 (1.648–7.134)	0.001	3.667 (1.756–7.661)	0.001
Capsule enhancement		<0.001		<0.001		<0.001
Incomplete/intact	6.623 (2.490–17.618)	<0.001	4.901 (2.171–11.063)	<0.001	4.970 (2.101–11.756)	<0.001
Absent/intact	5.860 (2.148–15.987)	0.001	5.523 (2.456–12.423)	<0.001	7.288 (3.095–17.160)	<0.001
Peritumoral enhancement [†]	2.257 (1.044–4.879)	0.038	2.568 (1.320–4.993)	0.005	–	–

[†], present/absent. MVI, microvascular invasion; PSM, propensity score matching; AFP, alpha-fetoprotein; DBIL, direct bilirubin; ES, Edmondson–Steiner grade; OR, odd ratio; CI, confidence interval.

(HR 1.588, 95% CI: 1.036–2.434, P=0.034), incomplete or absent capsule enhancement (HR 1.804, 95% CI: 1.190–2.736, P=0.005) were independently induced to recurrence. Similarly, this clinicoradiologic algorithm (AUC 0.658, 95% CI: 0.587–0.730, P<0.001, Table 4) was also superior to the BCLC, TNM, ERASL-pre and ERASL-post models for RFS prediction. However, MVI did not independently impair RFS in sHCC ≤3 cm after balancing the confounder—tumor size.

$$Y(\text{RFS, Post-PSM}) = 0.460\gamma - \text{Glutamyl transpeptidase}(0 \leq 60 \text{ U/L}; 1 > 60 \text{ U/L}) \\ + 0.682 \text{ prealbumin}(0 > 250 \text{ mg/L}; 1 \leq 250 \text{ mg/L}) \\ + 0.590 \text{ Capsule enhancement}(0: \text{absent}; 1: \text{present}) \quad [3]$$

In the multivariable Cox regression of OS, the older (HR 1.045, 95% CI: 1.010–1.081, P=0.012), alkaline phosphatase >125 U/L (HR 3.143, 95% CI: 1.144–8.636, P=0.026), HBV–DNA load >10⁴ (HR 2.045, 95% CI: 1.044–4.009, P=0.037), peritumoral enhancement (HR 2.319, 95% CI: 1.126–4.778, P=0.022), and peritumoral hypointensity (HR 2.377, 95% CI: 1.126–5.018, P=0.023) were independently associated with mortality before PSM:

$$Y(\text{OS}) = 0.044 \text{ Age} + 0.716 \text{ HBV-DNA loads}(0 \leq 10^4; 1 > 10^4) \\ + 1.186 \text{ Alkaline phosphatase}(0 \leq 125 \text{ U/L}; 1 > 125 \text{ U/L}) \\ + 0.910 \text{ Peritumoral enhancement}(0: \text{absent}; 1: \text{present}) \\ + 0.769 \text{ Peritumoral hypointensity}(0: \text{absent}; 1: \text{present}) \quad [4]$$

The median OS of MVI-positive and MVI-negative patients were 90.533 and >103.067 months (P=0.064), respectively. Despite MVI had a significant effect on mortality in univariate Cox regression (HR: 2.646, 95% CI: 1.155–6.063, P=0.021, Table 2), it failed to be an independent risk factor for mortality. Additionally, we further stratified MVI status into M0, M1, and M2, with median OS of >103.1, >81.7 and 90.5 months (P=0.005), respectively. However, MVI grade only significantly impaired OS in univariate Cox regression (P=0.011; M1, HR: 1.317, 95% CI: 0.539–3.220, P=0.546; M2, HR: 4.383, 95% CI: 1.671–11.493, P=0.003), it was also not independently prone to mortality. Accordingly, this MVI-related paper did not involve the Post-PSM analysis of overall survival. In

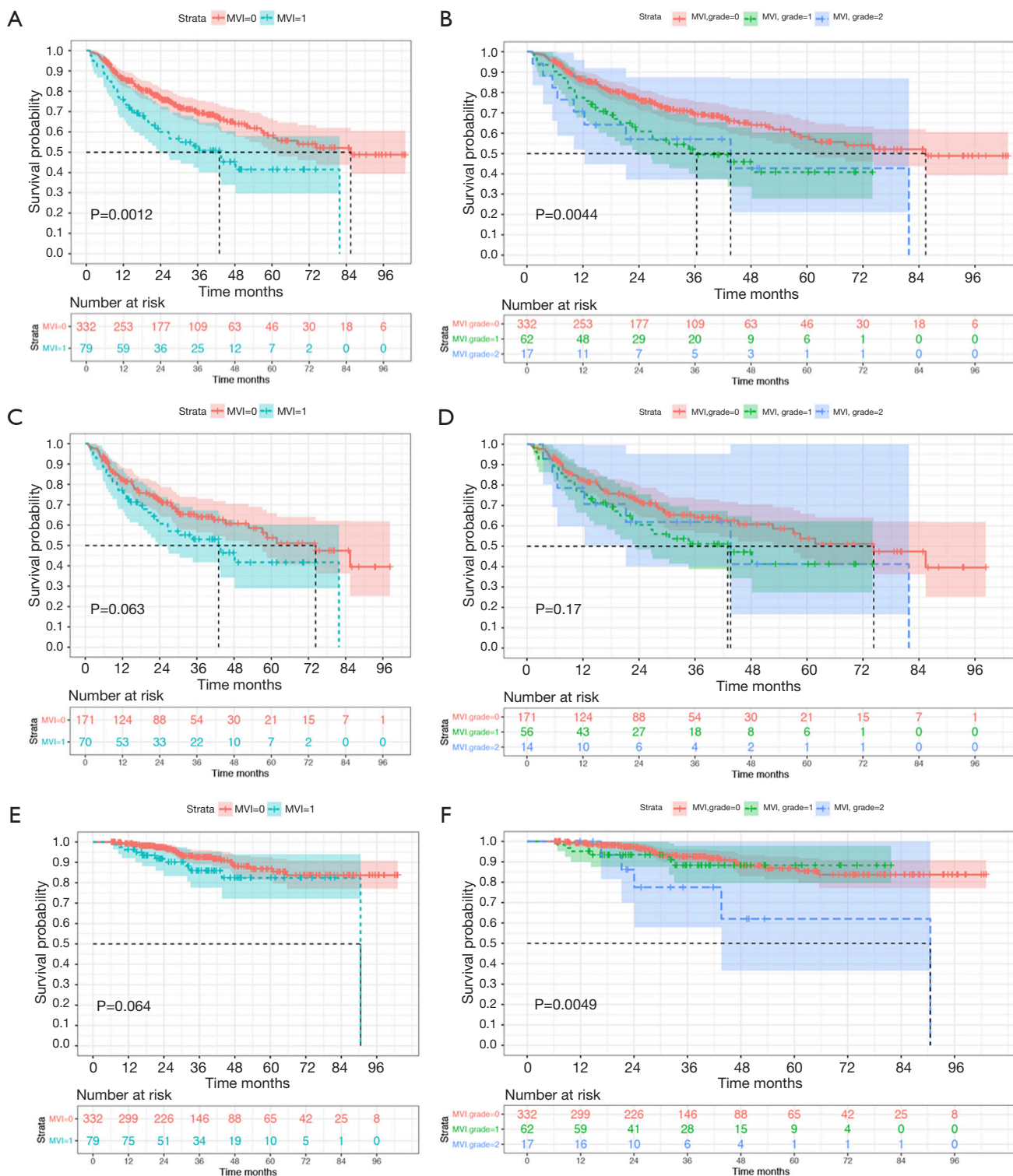


Figure 4 The Kaplan-Meier curves in terms of MVI status and grade. Recurrence-free survival curves were stratified by MVI status (A) and MVI grade (B) in the Pre-PSM subgroup, and were classified by MVI status (C) and MVI grade (D) in the Post-PSM subgroup, respectively. In addition, the overall survival curves were divided by MVI status (E) and MVI grade (F), respectively.

Table 4 The prediction models for recurrence before and after PSM

Model	Pre-PSM cohort (n=411)		Post-PSM cohort (n=241)	
	AUC (95% CI)	P	AUC (95% CI)	P
Clinicoradiologic model	0.662 (0.604–0.719)	<0.001	0.658 (0.587–0.730)	<0.001
BCLC stage	0.573 (0.514–0.632)	0.015	0.550 (0.476–0.625)	0.187
TNM stage	0.564 (0.504–0.624)	0.033	0.555 (0.480–0.631)	0.148
ERASL-post risk	0.511 (0.461–0.570)	0.723	0.503 (0.428–0.578)	0.933
ERASL-pre risk	0.509 (0.450–0.568)	0.766	0.504 (0.429–0.579)	0.917

BCLC, Barcelona clinic liver cancer; TNM, tumour-node-metastasis system of the American Joint Committee on Cancer (8th Edition); ERASL, early recurrence after surgery for liver tumour. ERASL-pre score = 0.818 gender (0: female, 1: male) + 0.447 Albumin-Bilirubin grade (0: Grade 1; 1: Grade 2 or 3) + 0.100 ln (serum AFP in ng/mL) + 0.580 ln (tumour size in cm) + 0.492 tumour number (0: single; 1: two or three; 2: four or more). Low risk: score \leq 2.558; intermediate risk: score: 2.558–3.521; High risk: score $>$ 3.521 [5]. ERASL-post score = 0.677 gender (0: female, 1: male) + 0.458 Albumin-Bilirubin grade (0: Grade 1; 1: Grade 2 or 3) + 0.661 microvascular invasion (0: no, 1: yes) + 0.082 ln (serum AFP in ng/mL) + 0.451 ln (tumour size in cm) + 0.379 tumour number (0: single; 1: two or three; 2: four or more). Low risk: score \leq 2.332; Intermediate risk: score: 2.332–3.445; High risk: score $>$ 3.445 [6].

Table 5 The nomograms for predicting MVI in our and the published studies

Previous studies	Sample size (mean tumor size)	Training cohort (AUC, 95% CI)	Validation cohort (AUC, 95% CI)	Model category	Outcome
Yan <i>et al.</i> (31)	268 (57.8% of patients $>$ 5 cm)	0.828 (0.767–0.886)	0.804 (0.707–0.901)	Clinical model	Present
Wang <i>et al.</i> (32)	454 ($>$ 4 cm)	0.79 (0.74–0.84)	0.81 (0.74–0.89)	Clinical model	Absent
Zhang <i>et al.</i> (33)	267 ($>$ 4 cm)	0.784 (0.719–0.840)	0.820 (0.713–0.900)	MRI radiomics	Absent
Ma <i>et al.</i> (37)	157 ($>$ 3.2 cm)	0.835 (0.760–0.910)	0.801 (0.672–0.930)	CT radiomics	Absent
Gao <i>et al.</i> (34)	89 ($>$ 5 cm)	0.851 (0.761–0.951)	0.861 (0.725–0.996)	Clinicoradiologic model of CT	Absent
Deng <i>et al.</i> (35)	513 (6.29 cm)	0.71 (0.66–0.75)	–	Clinicoradiologic model (CT/MR/US)	Absent
Peng <i>et al.</i> (36)	304 ($>$ 4.9 cm)	0.846 (0.787–0.905)	0.844 (0.774–0.915)	CT radiomics	Absent
Yang <i>et al.</i> (15)	208 ($>$ 1.7 cm)	0.943 (0.905–0.980)	0.861 (0.750–0.970)	Gd-EOB-DTPA MRI radiomics	Absent
Lei <i>et al.</i> (14)	707 ($>$ 3.15 cm)	0.81 (0.78–0.85)	0.80 (0.75–0.86)	Clinicoradiologic model (CT/MR/US)	Present
Xu <i>et al.</i> (6)	495 ($>$ 4.9 cm)	0.909 (0.860–0.928)	0.889 (0.851–0.919)	CT radiomics	Present
Our study of HCC \leq 3 cm	455 ($>$ 1.67 cm); Post-PSM: 241 ($>$ 1.83 cm)	0.884 (0.838–0.931) [†] ; Pre-PSM: 0.875 (0.828–0.921)	0.845 (0.734–0.956) [‡] ; 0.903 (0.813–0.994) [§] ; Post-PSM: 0.824 (0.761–0.887)	Clinicoradiologic model based on Gd-EOB-DTPA MRI	Present

[†], the training cohort (n=288); [‡], the validation cohort (n=123); [§], the test cohort (n=44). Pre-PSM: Pre-PSM cohort (n=411); Post-PSM cohort (n=241). Gd-EOB-DTPA, gadoxetate disodium; US, ultrasound examination.

addition, the comparison of the nomogram for predicting MVI between the published studies (6,14,15,31-36) and our research is summarized in *Table 5*.

Discussion

Predictive and preventable strategies of MVI based on

precision medicine will bring profound benefits (28). Compared with large HCC, sHCC within 3 cm has unique genetic changes (13,38), relatively homogeneous DNA stemline ploidy (39), benign biological behavior and favorable prognosis (10,12,13,39). Thus, this study aimed to investigate whether Gd-EOB-DTPA MRI is an efficient preoperative biomarker for MVI and whether

MVI independently impairs prognosis in patients with sHCC ≤ 3 cm using a RCT-like method—PSM. We found that AFP >20 ng/mL, non-smooth margin, incomplete or absent capsule, peritumoral enhancement and larger tumor size were independent risk factors for histologic MVI. The frequency of MVI significantly elevated as tumor size growing (from 0 to 12.6 cm). Despite MVI independently impaired RFS before balancing the confounder—tumor size, it was ultimately identified as a potential but not an independent risk factor for recrudescence of sHCC ≤ 3 cm after PSM. Similarly, MVI was not independently detrimental to OS.

Elevated AFP level (14,15), non-smooth margin (6,7,15), incomplete/absent capsule enhancement (6,14), increased tumor size (14,40) and peritumoral enhancement (6,7,15) have been reported as independent risk factors for MVI, which also highly suitable for our patients with sHCC ≤ 3 cm. Furthermore, the first three predictors remained reliability and robustness in MVI prediction after PSM. Notably, peritumoral enhancement, peritumoral hypointensity, capsule and margin statuses imply peritumoral biological behaviour, reflecting an aggressive tendency to invade the tumor capsule and infiltrate into the peritumoral non-neoplastic parenchyma (41). Histologically, HCC's capsule is composed of a fibrous-rich inner layer, and an outer layer containing portal venules (or sinusoids) and newly formed bile ducts (19). Thus, an intact capsule may serve as a border defenced against HCC's dissemination and progression. Once cancerous cells break through the capsule, imaging signs of the incomplete/absent capsule enhancement and infiltrative border (non-smooth margin) will appear (42). These may interpret the excellent performance of capsule status in predicting MVI and even recurrence after PSM.

Pathologically, peritumoral parenchyma is the representative of tumor heterogeneity, rich in highly invasive cells (13), and is the first and most common susceptible region of MVI (26,41). Peritumoral enhancement potentiates the formation of MVI, which may stem from (I) compensatory arterial hyperperfusion, which often occurs in areas of decreased portal flow (e.g., minute portal venule occlusion caused by tumor thrombi) (15,42); (II) high expression of placental growth factor and vascular endothelial growth factor receptor (VEGFR) in peritumoral zones (43). Moreover, the tumor-host interaction between VEGFR and MVI has been reported to promote the progression of renal cell carcinoma (44). Hence, these may explain that peritumoral enhancement independently

induce MVI and mortality in sHCC ≤ 3 cm. Analogically, peritumoral hypointensity independently shortened OS and is a potential risk indicator for MVI in our study. This imaging trait reflects the peritumoral reduction of Gd-EOB-DTPA uptake on HBP images, that is, a decreased expression of organic anionic transporting polypeptide (45). It may be induced by impaired hepatocyte function (45,46) or Kupffer cells injury in tumorous arterioportal shunts (46) because of portal branches obstruction by cancer embolus (i.e., MVI). Controversially, this radiologic feature is paucity of robustness for identifying MVI, RFS or OS in different studies (6,7,15,45,47-49). Thus, this equivocal finding needs further study.

According to the LI-RADS category, most patients are classified into the high-risk HCC of LR-5. Among the major features of LI-RADS, only tumor size and enhancing capsule were closely correlated with MVI and RFS. Similarly, in the majority of LI-RADS auxiliary features after univariate analysis, only non-rim APHE and necrosis were remarkably vulnerable to MVI, and only haemorrhage was markedly susceptible to recurrence. Generally, LI-RADS category and most LI-RADS features cannot independently predict MVI and prognosis. Our findings are basically agreement with the relationship between LI-RADS category/features and MVI in combined hepatocellular-cholangiocarcinoma (50), and postoperative recurrence in early HCC (21) or in LR-5 HCC (20,47). Previous study indicated (20) that mosaic architecture independently identified MVI and fat deposition independently predicted recurrence in LR-5 HCC after hepatectomy. The controversial results may originate from different grades of LI-RADS and thresholds of tumor size. Therefore, more homogeneous studies are needed to further explore these hallmarks for expanding the applicability of LI-RADS.

Compared with the published nomograms of MVI (6,14,15,31-36), only our study focused on sHCC ≤ 3 cm and the confounding factors of MVI for predicting prognosis. More precisely, two of ten published studies involved the prognostic analysis with the findings given below: the CT radiomics-related index of Xu *et al.* (6) and the clinicoradiologic indicators (HBV-DNA load, tumor size and number) of Lei *et al.* (14) were independent risk factors of MVI and recurrence/mortality. However, the two studies ignored the above-mentioned confounders between MVI and outcomes, and thus failed to recognize the actual role of MVI in prognosis to a certain extent. Besides, the study of Yan *et al.* (31) paid more attention to HCC lesions with tumor size >5 cm (155/268) and lymph node metastasis

(41/268), and ignored the importance of imaging hallmarks in predicting MVI. Above all, while the Kaplan-Meier curves of Yan *et al.* (31) signified significance differences between MVI and non-MVI patients in RFS and OS, this study did not involve the multivariable COX analysis. Hence, this published paper (31) cannot interpret whether MVI independently predicts prognosis, and whether there are confounders between MVI and outcomes.

Controversially, MVI exerts an ambiguous effect on sHCC's outcome. A non-PSM study of Du *et al.* (9) presented that MVI independently shortened OS and progression-free survival, and increasing tumor size facilitated higher incidences of MVI in solitary sHCC ≤ 3 cm. The results were highly consistent with our findings before PSM. However, the conclusion of Du *et al.* (9) neglected the bias of respective study and the potential confounder (e.g., tumor size) of MVI in prognostic analysis. Intriguingly, we identified that tumor size was the only confounder for MVI to predict RFS in our sHCC cases, confirming the hypothesis mentioned in the introduction. Furthermore, tumor size was significantly positive relevant to MVI incidence from 0 to 12.6 cm. This may interpret that unlike previous studies of larger tumor size (6,51), histologic MVI status or even MVI grades cannot independently induce to postoperative recurrence and mortality in our study. Contrary to our findings, the PSM study of Wang *et al.* (22) demonstrated that MVI engendered a negative influence on the RFS of solitary sHCC ≤ 2 cm. Nevertheless, this study only balanced the bias variables ($P < 0.1$) between MVI and non-MVI groups, but neglected to reduce the confounder (alanine transaminase) which independently associated with both MVI and RFS. Meanwhile, this study displayed a higher percentage of MVI (pre-PSM cohort: 33.1%; post-PSM cohort: 50%) than that of our population with maximal size ≤ 2 cm (pre-PSM cohort: 13.7%; post-PSM cohort: 13.4%). In brief, our study had a lower but more robust incidence of MVI before and after PSM, and balanced the actual confounder between MVI and RFS, leading to an opposite conclusion of Wang *et al.* (22). Furthermore, Shindoh *et al.* (52) presented that the presence of MVI (26.5%) did not affect the long-term outcome of sHCC ≤ 2 cm, which was analogous with our findings. The prognostic discrepancy of MVI among sHCC studies may attribute to the mixture of different tumor sizes or stages, MVI incidences, underlying liver diseases, geographic heterogeneity, surgical procedure (e.g., wide or narrow resection margin, anatomical or non-anatomical resection, curative resection or liver

transplantation) or postoperative treatment (e.g., preventive TACE, immunosuppression therapy). Consequently, the impact of MVI on sHCC's prognosis remains a challenge, and more homogeneous studies need to be further verified.

At present, the radical treatment ratio of patients with sHCC ≤ 3 cm is markedly increased, posing an urgent and practical issue in hepatic surgery (12). Hence, we speculate that this random controlled trial (RCT)-like PSM study allows clinicians more time to optimize therapeutic schedule (I) with a reasonable surgical margin, because MVI status is independently irrespective of recurrence/mortality in sHCC ≤ 3 cm; (II) with a reasonable residual liver volume, for reducing the frequency of hepatic dysfunction/infection and improving the safety of liver resection (53). Furthermore, solitary HCC ≤ 3 cm can be ablated almost completely after RFA (54). Nowadays, the disparity of HCC patients' survival between curative RFA and surgery is narrowing, especially for sHCC within 3 cm (55). Hence, this PSM study also provides additional evidence for clinicians to apply RFA for sHCC ≤ 3 cm, regardless of the histologic MVI status.

Several limitations should be noted. Firstly, this is a retrospective single-center study. Thus, we implemented PSM analysis to simulate a random controlled trial for minimizing selection bias. Meanwhile, the robustness of our results needs to be further verified by external and prospective dataset. Secondly, while BCLC, TNM, ERASL-pre, ERASL-post risk and the clinicoradiologic models have been used to predict prognosis, the AUCs of these algorithms were unsatisfactory. The results may stem from (I) the paucity of immunohistochemical biomarkers and postoperative characteristics; (II) the exclusion of well-established key risk factors for dismal outcomes (e.g., tumor size > 3 cm, tumor thrombus in gross vessels) in our population; (III) the absence of radiomics that can high-throughput extract quantitative imaging signatures to improve diagnostic or prognostic accuracy (16,56). Hence, the above three points can be implemented to further investigate the relationship between MVI and prognosis of sHCC.

Conclusions

Mainly based on the peritumoral hallmarks rather than LI-RADS features of Gd-EOB-DTPA MRI, our preoperative nomogram can excellently distinguish the histopathological MVI status. However, MVI is a potential but not an independent risk factor for prognosis in patients with sHCC ≤ 3 cm.

Acknowledgments

Funding: The study was supported by National Natural Science Foundation of China (No. 91859107), Shanghai Science and Technology Committee (No. 18DZ1930102 & No. 19411965500), Zhongshan Hospital, Fudan University (No. 2018ZSLC22 & No. 2020ZSLC61), Shanghai Municipal Key Clinical Specialty (No. W2019-018), Clinical Research Plan of SHDC (No. SHDC2020CR1029B).

Footnote

Reporting Checklist: The authors have completed the TRIPOD reporting checklist. Available at <http://dx.doi.org/10.21037/atm-20-7952>

Data Sharing Statement: Available at <http://dx.doi.org/10.21037/atm-20-7952>

Conflicts of Interest: All authors have completed the ICMJE uniform disclosure form (available at <http://dx.doi.org/10.21037/atm-20-7952>). The authors have no conflicts of interest to declare.

Ethical Statement: The authors are accountable for all aspects of the work in ensuring that questions related to the accuracy or integrity of any part of the work are appropriately investigated and resolved. This study was conducted in accordance with the Declaration of Helsinki (as revised in 2013). The study was approved and informed consent was waived by the Ethical Review Committee of Zhongshan Hospital, Fudan University, Shanghai, China (approval No. B2018-236).

Open Access Statement: This is an Open Access article distributed in accordance with the Creative Commons Attribution-NonCommercial-NoDerivs 4.0 International License (CC BY-NC-ND 4.0), which permits the non-commercial replication and distribution of the article with the strict proviso that no changes or edits are made and the original work is properly cited (including links to both the formal publication through the relevant DOI and the license). See: <https://creativecommons.org/licenses/by-nc-nd/4.0/>.

References

- Forner A, Reig M, Bruix J. Hepatocellular carcinoma. *Lancet* 2018;391:1301-14.
- De Angelis R, Sant M, Coleman MP, et al. Cancer survival in Europe 1999-2007 by country and age: results of EURO CARE--5-a population-based study. *Lancet Oncol* 2014;15:23-34.
- Fujiwara N, Friedman SL, Goossens N, et al. Risk factors and prevention of hepatocellular carcinoma in the era of precision medicine. *J Hepatol* 2018;68:526-49.
- Hwang S, Lee YJ, Kim KH, et al. The Impact of Tumor Size on Long-Term Survival Outcomes After Resection of Solitary Hepatocellular Carcinoma: Single-Institution Experience with 2558 Patients. *J Gastrointest Surg* 2015;19:1281-90.
- Vogel A, Cervantes A, Chau I, et al. Hepatocellular carcinoma: ESMO Clinical Practice Guidelines for diagnosis, treatment and follow-up†. *Ann Oncol* 2018;29:238-55.
- Xu X, Zhang HL, Liu QP, et al. Radiomic analysis of contrast-enhanced CT predicts microvascular invasion and outcome in hepatocellular carcinoma. *J Hepatol* 2019;70:1133-44.
- Lee S, Kim SH, Lee JE, et al. Preoperative gadoxetic acid-enhanced MRI for predicting microvascular invasion in patients with single hepatocellular carcinoma. *J Hepatol* 2017;67:526-34.
- Takuma Y, Shota I, Miyatake H, et al. Nomograms to Predict the Disease-free Survival and Overall Survival after Radiofrequency Ablation for Hepatocellular Carcinoma. *Intern Med* 2018;57:457-68.
- Du M, Chen L, Zhao J, et al. Microvascular invasion (MVI) is a poorer prognostic predictor for small hepatocellular carcinoma. *BMC Cancer* 2014;14:38.
- Lu XY, Xi T, Lau WY, et al. Pathobiological features of small hepatocellular carcinoma: correlation between tumor size and biological behavior. *J Cancer Res Clin Oncol* 2011;137:567-75.
- Lim C, Mise Y, Sakamoto Y, et al. Above 5 cm, size does not matter anymore in patients with hepatocellular carcinoma. *World J Surg* 2014;38:2910-8.
- Cong WM, Wu MC. Small hepatocellular carcinoma: current and future approaches. *Hepatol Int* 2013;7:805-12.
- Cong WM, Bu H, Chen J, et al. Practice guidelines for the pathological diagnosis of primary liver cancer: 2015 update. *World J Gastroenterol* 2016;22:9279-87.
- Lei Z, Li J, Wu D, et al. Nomogram for Preoperative Estimation of Microvascular Invasion Risk in Hepatitis B Virus-Related Hepatocellular Carcinoma Within the Milan Criteria. *JAMA Surg* 2016;151:356-63.
- Yang L, Gu D, Wei J, et al. A Radiomics Nomogram for

- Preoperative Prediction of Microvascular Invasion in Hepatocellular Carcinoma. *Liver Cancer* 2019;8:373-86.
16. Chong HH, Yang L, Sheng RF, et al. Multi-scale and multi-parametric radiomics of gadoxetate disodium-enhanced MRI predicts microvascular invasion and outcome in patients with solitary hepatocellular carcinoma ≤ 5 cm. *Eur Radiol* 2021. doi: 10.1007/s00330-020-07601-2. [Epub ahead of print].
 17. Renzulli M, Biselli M, Brocchi S, et al. New hallmark of hepatocellular carcinoma, early hepatocellular carcinoma and high-grade dysplastic nodules on Gd-EOB-DTPA MRI in patients with cirrhosis: a new diagnostic algorithm. *Gut* 2018;67:1674-82.
 18. Kitao A, Matsui O, Yoneda N, et al. Gadoteric acid-enhanced MR imaging for hepatocellular carcinoma: molecular and genetic background. *Eur Radiol* 2020;30:3438-47.
 19. Cho ES, Choi JY. MRI features of hepatocellular carcinoma related to biologic behavior. *Korean J Radiol* 2015;16:449-64.
 20. Chen J, Zhou J, Kuang S, et al. Liver Imaging Reporting and Data System Category 5: MRI Predictors of Microvascular Invasion and Recurrence After Hepatectomy for Hepatocellular Carcinoma. *AJR Am J Roentgenol* 2019;213:821-30.
 21. Zhang L, Kuang S, Chen J, et al. The Role of Preoperative Dynamic Contrast-enhanced 3.0-T MR Imaging in Predicting Early Recurrence in Patients With Early-Stage Hepatocellular Carcinomas After Curative Resection. *Front Oncol* 2019;9:1336.
 22. Wang H, Wu MC, Cong WM. Microvascular invasion predicts a poor prognosis of solitary hepatocellular carcinoma up to 2 cm based on propensity score matching analysis. *Hepatol Res* 2019;49:344-54.
 23. Chan AWH, Zhong J, Berhane S, et al. Development of pre and post-operative models to predict early recurrence of hepatocellular carcinoma after surgical resection. *J Hepatol* 2018;69:1284-93.
 24. American College of Radiology (2018). CT/MRI LI-RADS® v2018 core. Available online: <https://www.acr.org/Clinical-Resources/Reporting-and-Data-Systems/LI-RADS/CT-MRI-LI-RADS-v2018>
 25. Chernyak V, Fowler KJ, Kamaya A, et al. Liver Imaging Reporting and Data System (LI-RADS) Version 2018: Imaging of Hepatocellular Carcinoma in At-Risk Patients. *Radiology* 2018;289:816-30.
 26. Hu HT, Shen SL, Wang Z, et al. Peritumoral tissue on preoperative imaging reveals microvascular invasion in hepatocellular carcinoma: a systematic review and meta-analysis. *Abdom Radiol (NY)* 2018;43:3324-30.
 27. Eisenhauer EA, Therasse P, Bogaerts J, et al. New response evaluation criteria in solid tumours: revised RECIST guideline (version 1.1). *Eur J Cancer* 2009;45:228-47.
 28. Tang Z, Liu WR, Zhou PY, et al. Prognostic Value and Prediction Model of Microvascular Invasion in Patients with Intrahepatic Cholangiocarcinoma. *J Cancer* 2019;10:5575-84.
 29. Zhou PY, Tang Z, Liu WR, et al. Perioperative blood transfusion does not affect recurrence-free and overall survivals after curative resection for intrahepatic cholangiocarcinoma: a propensity score matching analysis. *BMC Cancer* 2017;17:762.
 30. Lim C, Bhangui P, Salloum C, et al. Impact of time to surgery in the outcome of patients with liver resection for BCLC 0-A stage hepatocellular carcinoma. *J Hepatol* 2017.
 31. Yan Y, Zhou Q, Zhang M, et al. Integrated Nomograms for Preoperative Prediction of Microvascular Invasion and Lymph Node Metastasis Risk in Hepatocellular Carcinoma Patients. *Ann Surg Oncol* 2020;27:1361-71.
 32. Wang L, Jin YX, Ji YZ, et al. Development and validation of a prediction model for microvascular invasion in hepatocellular carcinoma. *World J Gastroenterol* 2020;26:1647-59.
 33. Zhang R, Xu L, Wen X, et al. A nomogram based on bi-regional radiomics features from multimodal magnetic resonance imaging for preoperative prediction of microvascular invasion in hepatocellular carcinoma. *Quant Imaging Med Surg* 2019;9:1503-15.
 34. Gao SX, Liao R, Wang HQ, et al. A Nomogram Predicting Microvascular Invasion Risk in BCLC 0/ A Hepatocellular Carcinoma after Curative Resection. *Biomed Res Int* 2019;2019:9264137.
 35. Deng G, Yao L, Zeng F, et al. Nomogram For Preoperative Prediction Of Microvascular Invasion Risk In Hepatocellular Carcinoma. *Cancer Manag Res* 2019;11:9037-45.
 36. Peng J, Zhang J, Zhang Q, et al. A radiomics nomogram for preoperative prediction of microvascular invasion risk in hepatitis B virus-related hepatocellular carcinoma. *Diagn Interv Radiol* 2018;24:121-7.
 37. Ma X, Wei J, Gu D, et al. Preoperative radiomics nomogram for microvascular invasion prediction in hepatocellular carcinoma using contrast-enhanced CT. *Eur Radiol* 2019;29:3595-605.
 38. Moribe T, Iizuka N, Miura T, et al. Methylation of

- multiple genes as molecular markers for diagnosis of a small, well-differentiated hepatocellular carcinoma. *Int J Cancer* 2009;125:388-97.
39. Cong WM, Wu MC. The biopathologic characteristics of DNA content of hepatocellular carcinomas. *Cancer* 1990;66:498-501.
 40. Banerjee S, Wang DS, Kim HJ, et al. A computed tomography radiogenomic biomarker predicts microvascular invasion and clinical outcomes in hepatocellular carcinoma. *Hepatology* 2015;62:792-800.
 41. Hu H, Zheng Q, Huang Y, et al. A non-smooth tumor margin on preoperative imaging assesses microvascular invasion of hepatocellular carcinoma: A systematic review and meta-analysis. *Sci Rep* 2017;7:15375.
 42. Wei Y, Huang Z, Tang H, et al. IVIM improves preoperative assessment of microvascular invasion in HCC. *Eur Radiol* 2019;29:5403-14.
 43. Kusano H, Han J, Bulthuis M, et al. Microvascular invasion in hepatocellular carcinoma is defined by tumor characteristics and aberrant angiogenesis in peritumoral tissue. *Hepatology* 2013;58:1214A.
 44. Yildiz E, Gokce G, Kilicarslan H, et al. Prognostic value of the expression of Ki-67, CD44 and vascular endothelial growth factor, and microvessel invasion, in renal cell carcinoma. *BJU Int* 2004;93:1087-93.
 45. Shin SK, Kim YS, Shim YS, et al. Peritumoral decreased uptake area of gadoteric acid enhanced magnetic resonance imaging and tumor recurrence after surgical resection in hepatocellular carcinoma: A STROBE-compliant article. *Medicine (Baltimore)* 2017;96:e7761.
 46. Nishie A, Asayama Y, Ishigami K, et al. Clinicopathological significance of the peritumoral decreased uptake area of gadolinium ethoxybenzyl diethylenetriamine pentaacetic acid in hepatocellular carcinoma. *J Gastroenterol Hepatol* 2014;29:561-7.
 47. Wei H, Jiang H, Zheng T, et al. LI-RADS category 5 hepatocellular carcinoma: preoperative gadoteric acid-enhanced MRI for early recurrence risk stratification after curative resection. *Eur Radiol* 2021;31:2289-302.
 48. Lee S, Kim KW, Jeong WK, et al. Gadoteric acid-enhanced MRI as a predictor of recurrence of HCC after liver transplantation. *Eur Radiol* 2020;30:987-95.
 49. Bae JS, Kim JH, Lee DH, et al. Hepatobiliary phase of gadoteric acid-enhanced MRI in patients with HCC: prognostic features before resection, ablation, or TACE. *Eur Radiol* 2020. doi: 10.1007/s00330-020-07499-w. [Epub ahead of print].
 50. Wang X, Wang W, Ma X, et al. Combined hepatocellular-cholangiocarcinoma: which preoperative clinical data and conventional MRI characteristics have value for the prediction of microvascular invasion and clinical significance? *Eur Radiol* 2020;30:5337-47.
 51. Feng LH, Dong H, Lau WY, et al. Novel microvascular invasion-based prognostic nomograms to predict survival outcomes in patients after R0 resection for hepatocellular carcinoma. *J Cancer Res Clin Oncol* 2017;143:293-303.
 52. Shindoh J, Andreou A, Aloia TA, et al. Microvascular invasion does not predict long-term survival in hepatocellular carcinoma up to 2 cm: reappraisal of the staging system for solitary tumors. *Ann Surg Oncol* 2013;20:1223-9.
 53. Schindl MJ, Redhead DN, Fearon KC, et al. The value of residual liver volume as a predictor of hepatic dysfunction and infection after major liver resection. *Gut* 2005;54:289-96.
 54. Gao J, Wang SH, Ding XM, et al. Radiofrequency ablation for single hepatocellular carcinoma 3 cm or less as first-line treatment. *World J Gastroenterol* 2015;21:5287-94.
 55. Tiong L, Maddern GJ. Systematic review and meta-analysis of survival and disease recurrence after radiofrequency ablation for hepatocellular carcinoma. *Br J Surg* 2011;98:1210-24.
 56. Lambin P, Leijenaar RTH, Deist TM, et al. Radiomics: the bridge between medical imaging and personalized medicine. *Nat Rev Clin Oncol* 2017;14:749-62.

Cite this article as: Chong H, Zhou P, Yang C, Zeng M. An excellent nomogram predicts microvascular invasion that cannot independently stratify outcomes of small hepatocellular carcinoma. *Ann Transl Med* 2021;9(9):757. doi: 10.21037/atm-20-7952

Supplementary methods

MRI hallmarks

The major features of LI-RADS (version 2018) (24,25) were as follows: (I) tumor size, the longest axis diameter measured on HBP images; (II) enhancing capsule, an uniform, thin, smooth, linear and enhanced border surrounded most or all of the tumor on PVP or TP images; (III) non-peripheral washout, defined as non-peripheral hypoenhancement on PVP images as the result of the reduction of tumor enhancement from earlier to later phase; (IV) non-rim arterial phase hyperenhancement (APHE), defined as nonrim-like enhancement in arterial phase unequivocally greater in whole or in part of tumor than liver. Furthermore, the algorithms of LI-RADS categories were calculated by the above major features.

Some ancillary features of LI-RADS (24) were as below: (I) intratumoral necrosis, (II) intratumoral hemorrhage, (III) intratumoral fat deposition; (IV) targetoid architecture is defined as rim APHE, peripheral washout, delayed central enhancement, targetoid restriction on DWI, or targetoid appearance on TP or HBP; (V) nodule in nodule architecture, defined as the presence of smaller inner nodule within and having architecture different imaging features than larger outer nodule; (VI) mosaic architecture is defined as the presence of randomly distributed internal nodules or compartments, usually with different imaging features; (VII) hypointensity of tumor on HBP images.

Non-LI-RADS morphologic hallmarks comprised the presence or absence of: (I) non-smooth tumor margin; (II) peritumoral enhancement is defined as an enhancement region adjacent to tumor boundary in arterial phase images, which became isointense with the background liver parenchyma on PVP or TP images (26); (III) peritumoral hypointensity presented as an irregular, wedge-shaped, or flame-like hypointense area of liver parenchyma located outside of the tumor margin on HBP images (26); (IV) ascites.

Sample size calculation

The sample size was estimated by the log-rank test (Lakatos: median survival time). The parameters of Lakatos were set as below: α (significance level), $1-\beta$ (power), the sample proportion of MVI-positive group, accrual time and follow-up time were 0.05, 0.90, 0.25, 96 and 103 months, respectively.

Based on the previous study (6), the median RFS of MVI was 9.2 months and that of non-MVI was 46.7 months. Hence, the sample size needs to be satisfied with ≥ 23 , ≥ 9 and ≥ 14 in the overall, MVI-positive, and MVI-negative datasets, respectively.

In terms of our study population, the median RFS of MVI-positive and MVI-negative cohorts before PSM were 43.0 and 85.4 months, respectively. The corresponding sample sizes were 212 in total, 82 in MVI and 130 in non-MVI cases.

Generally, our sample sizes basically meet the statistical requirements: 441 subjects in the total population (>212 and >23 calculated patients), 79 patients in the MVI-positive dataset (>9 but slight less than 82 calculated MVI HCCs), and 171 cases in the MVI-negative group (>14 and >130 calculated non-MVI HCCs).

Table S1 Parameters of MRI sequences

Parameters	TR (millisecond)	TE (millisecond)	Bandwidth (Hz/pixel)	FOV (mm)	Matrix	Section thickness (mm)	Acquisition time (second)
Respiratory-triggered T2-weighted imaging	4,918	106	195	285×380	384×273	5.5	Respiration-dependent
Free-breathing DWI [†]	5,100	55	1565	285×380	192×154	5.5	74
Breath-hold T1-weighted in-phase and opposed-phase imaging	6.88	2.39/4.77	435	356×380	320×240	3.5	18
Breath-hold T1-weighted VIBE imaging	3.47	1.36	400	308×380	320×240	3	15

[†], DWI was performed with b values of 0 and 500 sec/mm². TR, repetition time; TE, echo time; BW, bandwidth; FOV, field of view; DWI, diffusion-weighted Imaging; VIBE, volumetric interpolated breath-hold examination.

Table S2 Clinicopathologic and imaging characteristics of 455 eligible patients for MVI prediction in cohorts

Variables	Training cohort			Validation cohort			Test cohort		
	MVI- (n=230)	MVI+ (n=58)	P	MVI- (n=102)	MVI+ (n=21)	P	MVI- (n=37)	MVI+ (n=7)	P
Age, mean ± SD, year	54.5±11.15	55.4±9.64	0.608 [†]	54.8±12.24	52.4±9.86	0.398	55.6±11.46	53.3±13.93	0.639
Female/Male	27/203	10/48	0.263	22/80	2/19	0.334 [§]	9/28	1/6	0.929 [§]
Size (cm, mean ± SD)	1.6±0.62	2.0±0.56	<0.001 [†]	1.6±0.65	2.1±0.60	0.005 [†]	1.0±0.76	1.0±0.82	0.706 [†]
≤1/1–2/>2 cm	62/128/40	4/28/26	<0.001	26/50/26	2/7/12	0.014	10/16/11	2/3/2	0.996
ES (I–II/III–IV)	150/80	25/33	0.002	68/34	13/8	0.675	31/6	3/4	0.060 [§]
Cirrhosis [†]	77/153	16/42	0.391	41/61	8/13	0.858	12/25	2/5	0.100 [§]
Ki-67 (%)	23.4±16.85	31.2±21.12	0.012 [†]	24.3±20.60	35.3±23.81	0.035 [†]	31.1±24.15	55.7±31.55	0.089 [†]
HBV or HCV [†]	29/201	6/52	0.637	42/60	8/13	0.793	10/27	1/6	0.812 [§]
HBV-DNA (≤10 ⁴ / ^{>} 10 ⁴)	168/62	36/22	0.100	74/28	15/6	0.917	27/10	3/4	0.260 [§]
Multifocality [†]	202/28	45/13	0.046	84/18	17/4	1.000 [§]	31/6	7/0	0.585 [§]
Anatomical resection [†]	207/23	50/8	0.405	92/10	18/3	0.827 [¶]	34/3	6/1	0.513 [§]
AFP (≤20/20–400/>400 ng/mL)	140/68/22	22/26/10	0.006	60/35/7	12/6/3	0.506	24/12/1	4/1/2	0.039
TBIL (≤20.4/>20.4 μmol/L)	203/27	49/9	0.437	82/20	14/7	0.274 [§]	29/8	7/0	0.409 [§]
DBIL (≤20.4/>20.4 μmol/L)	183/47	43/15	0.369	85/17	14/7	0.146 [§]	35/2	7/0	1.000 [¶]
ALB (>35/≤35 g/L)	224/6	58/0	0.466 [§]	99/3	21/0	1.000 [¶]	36/1	6/1	0.296 [§]
ALT (≤50/>50 U/L)	189/41	50/8	0.465	86/16	18/3	1.000 [§]	30/7	6/1	1.000 [§]
AST (≤40/>40 U/L)	179/51	52/6	0.043	82/20	18/3	0.793 [§]	31/6	5/2	0.808 [§]
AKP (≤125/>125 U/L)	212/18	55/3	0.487	97/5	21/0	0.587 [¶]	35/2	6/1	0.413 [¶]
GGT (≤60/>60 U/L)	160/70	47/11	0.083	78/24	13/8	0.166	29/8	6/1	1.000 [§]
PALB (>180/≤180 mg/L)	56/174	12/46	0.558	23/79	2/19	0.177	19/18	5/2	0.572 [§]
PT (≤13/>13 s)	197/33	50/8	0.914	86/16	19/2	0.698 [§]	28/9	5/2	1.000 [§]
Child-Pugh (A/B)	219/11	54/4	0.517	97/5	21/0	0.587	35/2	6/1	0.413 [¶]
Nodule in nodule [†]	217/13	56/2	0.500	96/6	20/1	1.000 [§]	33/4	7/0	1.000 [¶]

Table S2 (continued)

Table S2 (continued)

Variables	Training cohort			Validation cohort			Test cohort		
	MVI- (n=230)	MVI+ (n=58)	P	MVI- (n=102)	MVI+ (n=21)	P	MVI- (n=37)	MVI+ (n=7)	P
Fat deposition [†]	161/69	37/21	0.362	71/31	17/4	0.294	28/9	5/2	1.000 [§]
Necrosis [†]	199/31	41/17	0.004	84/18	16/5	0.725 [§]	29/8	6/1	1.000 [§]
Hemorrhage [†]	200/30	51/7	0.843	86/16	18/3	1.000 [§]	31/6	7/0	0.568 [¶]
Ascites [†]	217/13	54/4	0.962 [§]	99/3	21/0	1.000 [¶]	36/1	7/0	1.000 [¶]
Nonim APHE [†]	50/180	19/39	0.079	21/81	7/14	0.326 [§]	23/14	5/2	0.969 [§]
Mosaic architecture [†]	227/3	57/1	1.000 [¶]	10/2	20/1	0.433 [¶]	35/2	7/0	1.000 [¶]
Targetoid [†]	209/21	56/2	0.248 [§]	95/7	18/3	0.487 [§]	30/7	5/2	0.944 [§]
HBP hypointensity [†]	6/224	2/56	1.000 [§]	3/99	1/20	0.532 [¶]	4/33	0/7	1.000 [¶]
Non-smooth margin [†]	154/76	10/48	<0.001	72/30	5/16	<0.001	28/9	0/7	0.001 [§]
Non-peripheral washout [†]	28/202	5/53	0.448	14/88	2/19	0.869	6/31	0/7	0.568 [¶]
LI-RADS (3/4/5)	17/67/146	5/19/34	0.790	7/27/68	2/6/13	0.879	6/15/16	0/2/5	0.311
Enhancing capsule (intact/incomplete/absent)	163/26/41	10/28/20	<0.001	73/14/15	5/5/11	<0.001	22/4/11	0/4/3	0.003
Peritumoral enhancement [†]	183/47	22/36	<0.001	86/16	9/12	<0.001	32/5	4/3	0.190 [§]
Peritumoral hypointensity [†]	200/30	35/23	<0.001	95/7	15/6	0.011	2/2	5/1	0.118 [§]

[†], absent/present; [‡], Mann-Whitney U test; [§], Fisher's test; [¶], continuity correction. The other categorical variables, Chi-square test; the other numeric variables, independent samples *t*-test. MVI, microvascular invasion; PSM, propensity score matching; ES, Edmondson-Steiner grade; HBV, hepatitis B virus; HCV, hepatitis C virus; HBV-DNA, deoxyribonucleic acid of hepatitis B virus; ALT, alanine aminotransferase; AST, aspartate aminotransferase; TBIL, total bilirubin; DBIL, direct bilirubin; AKP, alkaline phosphatase; GGT, γ -glutamyl transpeptidase; ALB, albumin; PALB, prealbumin; PT, prothrombin time; APHE, arterial phase hyperenhancement; HBP, hepatobiliary phase; LI-RADS, Liver Imaging Reporting and Data System.

Table S3 Baseline characteristics for predicting postoperative recurrence and mortality

Variables	Pre-PSM cohort (n=411)			After-PSM cohort (n=241)					
	Non-relapse (n=273)	Relapse (n=138)	P value	Non-mortality (n=375)	Mortality (n=36)	P value	Non-relapse (n=148)	Relapse (n=93)	P value
MVI [†]	40/233	39/99	0.001	68/307	11/25	0.071	36/112	34/59	0.042
Age (year; mean ± SD)	53.7±11.38	56.30±10.51	0.021 [‡]	54.09±11.10	59.61±10.51	0.002 [‡]	54.57±11.21	56.85±10.03	0.921
Male/ Female	234/39	116/22	0.656	321/54	29/7	0.416	133/15	78/15	0.170
Size (cm; mean ± SD)	1.59±0.62	1.79±0.67	0.003 [‡]	1.64±0.62	1.91±0.77	0.049 [‡]	1.82±0.58	1.94±0.61	0.113 [‡]
ES (III–IV/I–II)	92/181	63/75	0.018	136/239	19/17	0.051	49/99	44/49	0.027
Cirrhosis [†]	181/92	88/50	0.610	245/130	24/12	0.872	93/55	60/33	0.792
Ki-67 (%)	24.51±18.38	26.94±20.43	0.366 [‡]	24.93±18.84	29.50±21.50	0.201 [‡]	26.98±19.27	27.35±19.91	0.882 [‡]
ERASL-pre risk (intermediate/low risk)	3/270	4/134	0.353 [§]	5/370	2/34	0.118 [¶]	2/146	2/91	1.000 [§]
ERASL-post risk (intermediate/low risk)	8/265	7/131	0.274	12/363	3/33	0.270 [§]	7/141	5/88	1.000 [§]
TNM (T1a/T1b/T2 stage)	191/32/50	78/17/43	0.010	251/43/81	18/6/12	0.124	88/26/34	47/15/31	0.207
BCLC (0/A/B stage)	188/83/2	75/61/2	0.014	246/126/3	7/18/1	0.062	88/59/1	46/46/1	0.310
HBV or HCV [†]	211/62	115/23	0.153	299/76	27/9	0.503	129/19	74/19	0.115
HBV-DNA (>10 ⁴ /≤10 ⁴)	75/198	43/95	0.438	103/272	15/21	0.072	44/104	33/60	0.351
Multifocality [†]	35/238	28/110	0.047	56/319	7/29	0.473	21/127	20/73	0.141
Anatomical hepatectomy [†]	29/244	15/123	0.939	37/338	7/29	0.135 [§]	14/134	8/85	0.822
AFP (≤20/20–400/>400 ng/mL)	157/89/27	77/46/15	0.929	215/123/37	19/12/5	0.725	88/45/15	54/29/10	0.975
TBIL (>20.4/≤20.4 μmol/L)	43/230	20/118	0.738	60/315	3/33	0.223	20/128	14/79	0.738
DBIL (>20.4/≤20.4 μmol/L)	54/219	32/106	0.422	77/298	9/27	0.529	28/120	22/71	0.377
ALB (>35/≤35 g/L)	5/268	4/134	0.485	8/367	1/35	1.000 [§]	2/146	2/91	0.636
ALT (>50/≤50 U/L)	43/230	25/113	0.542	60/315	8/28	0.337	24/124	17/76	0.678
AST (>40/≤40 U/L)	52/221	28/110	0.764	71/304	9/27	0.380	29/119	20/73	0.720
AKP (>125/≤125 U/L)	17/256	9/129	0.908	21/354	5/31	0.111 [§]	8/140	8/85	0.332
GGT (>60/≤60 U/L)	69/204	44/94	0.156	101/274	12/24	0.411	39/109	34/59	0.093
PALB (≤250/>250 mg/L)	203/70	115/23	0.040	287/88	31/5	0.190	110/38	81/12	0.017
PT (>13/≤13 s)	40/233	19/119	0.809	55/320	4/32	0.561	23/125	17/76	0.578
ALBI grade (2/1)	46/227	24/114	0.890	40/233	6/23	0.556 [§]	28/120	16/77	0.737
Child-Pugh (B/A)	11/262	9/129	0.267	18/357	2/34	1.000 [§]	8/140	6/87	0.735
Nodule in nodule [†]	15/258	7/131	0.858	22/353	0/36	0.269 [§]	9/139	5/88	0.820
Fat deposition [†]	81/192	44/94	0.645	115/260	10/26	0.719	50/98	31/62	0.943
Necrosis [†]	48/225	23/115	0.817	63/312	8/28	0.411	34/114	14/79	0.134
Hemorrhage [†]	31/242	25/113	0.059	47/328	9/27	0.067 [§]	17/131	17/76	0.140
Ascites [†]	11/262	9/129	0.267	16/359	4/32	0.156 [§]	7/141	6/87	0.565

Table S3 (continued)

Table S3 (continued)

Variables	Pre-PSM cohort (n=411)						After-PSM cohort (n=241)		
	Non-relapse (n=273)	Relapse (n=138)	P value	Non-mortality (n=375)	Mortality (n=36)	P value	Non-relapse (n=148)	Relapse (n=93)	P value
Non-rim APHE [†]	215/58	99/39	0.114	289/86	25/11	0.304	111/37	70/23	0.963
Mosaic architecture [†]	7/266	0/138	0.135 [§]	7/368	0/36	1.000 [¶]	4/144	0/93	0.280 [§]
Targetoid [†]	20/253	13/125	0.461	27/348	6/30	0.094 [§]	13/135	9/84	0.815
HBP hypointensity [†]	264/9	135/3	0.743 [§]	363/12	36/0	0.568 [§]	143/5	92/1	0.264
Non-smooth margin [†]	100/173	70/68	0.006	146/229	24/12	0.001	63/85	49/44	0.125
Non-peripheral washout [†]	242/31	120/18	0.618	328/47	34/2	0.335 [§]	133/15	83/10	0.878
LI-RADS (LR-3/4/5)	19/78/176	12/41/85	0.769	28/108/239	3/11/22	0.950	9/47/92	6/26/61	0.823
Capsule enhancement (absent/incomplete/intact)	50/41/182	37/32/69	0.005	77/60/238	10/13/13	0.002	29/28/91	28/25/40	0.019
Peritumoral enhancement [†]	61/212	50/88	0.003	91/284	20/16	<0.001	43/105	40/53	0.026
Peritumoral hypointensity [†]	34/239	32/106	0.005	53/322	13/23	0.001	25/123	25/68	0.063

[†], present/absent; [‡], Mann-Whitney U test; [§], Continuity correction; [¶], Fisher's test; the other numeric variables, independent samples *t*'-test; the other categorical variables, Chi-square test. MVI, microvascular invasion; PSM, propensity score matching; ES, Edmondson-Steiner grade; HBV, hepatitis B virus; HCV, hepatitis C virus; HBV-DNA, deoxyribonucleic acid of hepatitis B virus; ALT, alanine aminotransferase; AST, aspartate aminotransferase; TBIL, total bilirubin; DBIL, direct bilirubin; AKP, alkaline phosphatase; GGT, γ -glutamyl transpeptidase; ALB, albumin; PALB, prealbumin; PT, prothrombin time; APHE, arterial phase hyperenhancement; HBP, hepatobiliary phase; LI-RADS, Liver Imaging Reporting and Data System.