



Identification of significant genes with a poor prognosis in skin cutaneous malignant melanoma based on a bioinformatics analysis

Jin Wang^{1,2,3,4}, Jilong Yang^{1,2}

¹Department of Bone and Soft Tissue Tumor, Tianjin Medical University Cancer Institute and Hospital, Tianjin, China; ²National Clinical Research Center for Cancer, Key Laboratory of Cancer Prevention and Therapy, Tianjin's Clinical Research Center for Cancer, Tianjin, China; ³Department of Dermatology, Tianjin Academy of Traditional Chinese Medicine Affiliated Hospital, Tianjin, China; ⁴Graduate School, Tianjin Medical University, Tianjin, China

Contributions: (I) Conception and design: J Wang; (II) Administrative support: J Yang; (III) Provision of study materials or patients: J Yang; (IV) Collection and assembly of data: J Wang; (V) Data analysis and interpretation: J Wang; (VI) Manuscript writing: Both authors; (VII) Final approval of manuscript: Both authors.

Correspondence to: Jilong Yang. National Clinical Research Center for Cancer, Key Laboratory of Cancer Prevention and Therapy, Tianjin's Clinical Research Center for Cancer, Tianjin 300060, China. Email: yangjilong@tjmuch.com.

Background: Skin cutaneous malignant melanoma (SKCM) is a deadly mutated malignancy that arises from melanocytes in the basal layer of the skin. This study sought to identify effective treatment targets that could serve as prospective therapeutic targets to improve patient outcomes.

Methods: The GSE83583, GSE111766, and GSE104849 data sets from the GPL10558 platform in the Gene Expression Omnibus (GEO) were used in this study. The candidate genes were identified using the GEO2R tool and a Venn diagram. The Gene Ontology (GO) enrichment and Kyoto Encyclopedia of Gene and Genome (KEGG) preliminary analyses of the differentially expressed genes (DEGs) were conducted using the Database for Annotation, Visualization and Integrated Discovery, and R software. The protein-protein interaction (PPI) network was examined using Cytoscape software. The survminer package was used to examine the overall survival of patients with the identified genes. The Human Protein Atlas (HPA) was used to verify the protein levels of significant genes with poor prognosis. The highly expressed genes in the melanoma tissues were visualized using the ggplot2 package.

Results: In total, 160 DEGs from 124 melanoma tissues and 9 normal melanocyte tissues were examined in this study. Cytoscape displayed 19 central nodes from the 160 DEGs. The re-analysis showed that the cytochrome P450 family 1 subfamily B member 1 (*CYP1B1*) and protein kinase C beta (*PRKCB*) were significantly enriched in the micro ribonucleic acids (RNAs) in cancer.

Conclusions: *CYP1B1* and *PRKCB* were overexpressed in and correlated with the poor prognosis of SKCM. Our findings might help explore the prognosis and diagnostic markers of SKCM.

Keywords: Poor prognosis; skin cutaneous malignant melanoma (SKCM); bioinformatics analysis; significant genes; biomarker

Submitted Feb 26, 2022. Accepted for publication Apr 02, 2022.

doi: 10.21037/atm-22-1163

View this article at: <https://dx.doi.org/10.21037/atm-22-1163>

Introduction

Skin cutaneous malignant melanoma (SKCM) is a potentially fatal skin malignant tumor, and its incidence is increasing worldwide (1). At present, the average lifetime risk for melanoma has now reached 1 in 63 in the United States, and a similar probability has been reported in other Western countries (2). SKCM is rarer than other skin cancers; however, it is more lethal, and accounts for about 73% of skin cancer-related deaths (3). Early SKCM can be treated surgically, and the 5-year survival rate is as high as 90% (4). However, when patients are diagnosed with advanced or metastatic SKCM, the 5-year survival rate decreases significantly to 64% for regional malignant melanoma and 23% for distant malignant melanoma, and the options for treatment are very limited (5,6).

The emergence of immunotherapy and targeted therapy in recent years represents a breakthrough in the treatment of metastatic melanoma, and while immunotherapy has achieved certain results (7), its clinical application is limited due to its high immunotoxicity (8). Thus, modern molecular biology techniques and bioinformatics methods are being applied to study skin melanoma at the molecular level. The identification of the exact molecular mechanisms and metastasis-related biomarkers of cutaneous melanoma, and the identification of effective therapeutic targets, appear to be critical to the development of more effective therapies for cutaneous melanoma.

In this study, 3 data sets (GSE83583, GSE111766, and GSE104849) were chosen from Gene Expression Omnibus (GEO). In previous similar study (9), the GSE data sets were from different GPL platforms. It is well known that the gene annotation information of different GPL platforms is not the same, which ultimately leads to errors in research results. The GSE data sets in our study are all from the same GPL platform, which makes our final results more convincing. Next, the commonly differentially expressed genes (DEGs) in the 3 data sets were identified using the GEO2R online tool and R software with the ggplot2 and UpSet R packages. Next, the Database for Annotation, Visualization and Integrated DiscKery (DAVID) was used to test the DEGs to determine their molecular functions (MFs), cellular components (CCs), biological processes (BPs), and Kyoto Encyclopedia of Gene and Genome (KEGG) pathways. A protein-protein interaction (PPI) network was then formed, and the Cytotype Molecular Complex Detection (MCODE) plug-ins were used to further analyze and identify the core DEGs. The core

DEGs were then imported into the software R with the survminer package to identify the significant prognostic information ($P < 0.05$). Further, we validated the significantly expressed DEGs in the tumor stage I (T1), tumor stage II (T2), tumor stage III (T3) and tumor stage IV (T4) of melanoma stages via the R package, mainly ggplot2 (Version 3.3.3) ($P < 0.05$). Notably, only 6 DEGs qualified for the clinical correlation analysis of tumor stage, which were subsequently re-analyzed via a KEGG pathway enrichment analysis. Ultimately, 2 DEGs [i.e., *PRKCB* and *CYP11B1*] were identified and found to be significantly enriched in the micro ribonucleic acids (RNAs) in the cancer pathway. The transcriptional levels were examined by quantitative real-time polymerase chain reaction, and the protein levels were obtained from the Human Protein Atlas (HPA). In conclusion, our bioinformatics study identified additional useful biomarkers that may serve as effective targets in the treatment of SKCM. We present the following article in accordance with the STREGA reporting checklist (available at <https://atm.amegroups.com/article/view/10.21037/atm-22-1163/rc>).

Methods

Microarray data information

The GEO of the National Center for Biotechnology Information is a public functional genomics data repository that contains 200,000+ human gene expression samples for data submissions (<https://www.ncbi.nlm.nih.gov/geo/>). We obtained the gene expression profiles of GSE83583, GSE111766, and GSE104849 in melanoma tissues and normal melanocyte tissues from this database. The microarray data of GSE83583, GSE111766, and GSE104849 all accessed from the GPL10558 Platform (Illumina HumanHT-12 V4.0 expression Bead chip). Among them, GSE83583 included 81 melanoma tissues and 3 normal melanocyte tissues, GSE111766 included 21 melanoma tissues and 3 normal melanocyte tissues, and GSE104849 included 22 melanoma tissues and 3 normal melanocyte tissues. The study was conducted in accordance with the Declaration of Helsinki (as revised in 2013).

Data filtering of DEGs

The DEGs of the melanoma and normal melanocyte specimens were identified using the GEO2R online tools (10). The filter criteria were as follows: a $|\log_2FC|$

>1.5 and an adjusted P value <0.05. The filtered data in TXT format were tested and visualized using R software (Version 3.5.3) by ggplot2 (Version 3.3.3) and UpSet R package (Version 1.4.0) to identify the common DEGs among the 3 data sets (11). The DEGs with a logFC <0 were considered downregulated genes, and those with a logFC >0 were considered upregulated genes.

Gene Ontology (GO) enrichment and KEGG pathway enrichment analyses

The GO enrichment analysis is a commonly used method to define genes and their protein or RNA products to identify the exclusive biological characteristics of high-throughput genomic data or transcriptomes (12). A KEGG analysis examines genomes, biological pathways, chemical materials, diseases, and drugs (13). The DAVID website (<https://david.ncicrf.gov/home.jsp>) was designed to identify a large number of protein or gene functions (14). The enrichment of the DEGs in terms of their BPs, CCs, MFs, and KEGG pathways (P<0.05) was also analyzed by DAVID.

PPI network construction and module analysis

PPI information can be captured by the Search Tool for the Retrieval of Interacting Genes (STRING, <https://cn.string-db.org/>) (15). The STRING database (Version 11.5) and Cytoscape software (Version 3.6.0) (16) were used to check the potential physical and functional correlations among the DEGs (the conditions were a confidence score ≥ 0.4 and a maximum number of interactors =0). Further, the MCODE plug-in was used to check and visualize modules of the PPI network with the following parameter settings: node score cutoff =0.2; degree cutoff =2; maximum depth =100; and k-core =2.

Survival analysis, protein level, and RNA sequencing expression of core genes

The protein levels of the DEGs were examined by immunohistochemistry from the HPA (17) (<http://www.proteinatlas.org/>). R is a free software environment for statistical computing and graphics. We applied the R software for the statistical analysis and visualization of the data. The survival data and relevance (tumor stage) data were downloaded RNA Sequencing (RNAseq) data from the SKCM Project in the cancer genome atlas (TCGA)

database (<https://portal.gdc.cancer.gov/>). Survminer R package (Version 0.4.9) (for the visualization of the Kaplan-Meier survival curves) and survival R package (Version 3.2–10) [for statistical the analysis of the survival data and clinical relevance (tumor stage) data] were used for the data analysis.

Statistical analysis

Statistical analysis was performed by R packages. All data in the study were presented as mean \pm standard deviation (SD). Differences between two groups were determined using the Cox proportional hazards model. And the significance value was determined when P<0.05.

Results

Identification of DEGs in melanoma tissues

In the present study, the raw data of the 3 data sets contained a total of 124 melanoma tissues and 9 normal melanocyte tissues. GEO2R (<https://www.ncbi.nlm.nih.gov/geo/geo2r/?acc=>) was used to extract 4,378, 921, and 4,187 DEGs from the GSE83583, GSE111766, and GSE104849 data sets, respectively. All the 160 common DEGs were identified using R package (ggplot2 and UpSet). The DEGs included 154 upregulated genes (logFC >0) and 6 downregulated genes (logFC <0) in the melanoma tissues (see *Figure 1* and *Figure S1A*).

GO and KEGG pathway analyses of DEGs in melanoma tissues

The GO annotation and KEGG pathway enrichment analyses of the 160 DEGs were conducted using the DAVID website. The results of the GO enrichment analysis were as follows: (I) in relation to the BPs, the upregulated DEGs were significantly enriched in the endothelial cell migration, positive regulation of endothelial cell proliferation, positive regulation of gene expression, cellular response to glucose stimulus, fatty acid metabolic process and signal transduction (no significant results were found for the downregulated DEGs); (II) in relation to the CCs, the upregulated DEGs were significantly enriched in oxidoreductase activity, peptide antigen binding, L-cystine transmembrane transporter activity, growth factor activity, and cytokine activity (no significant results were found for the downregulated DEGs); and (III) in relation to the

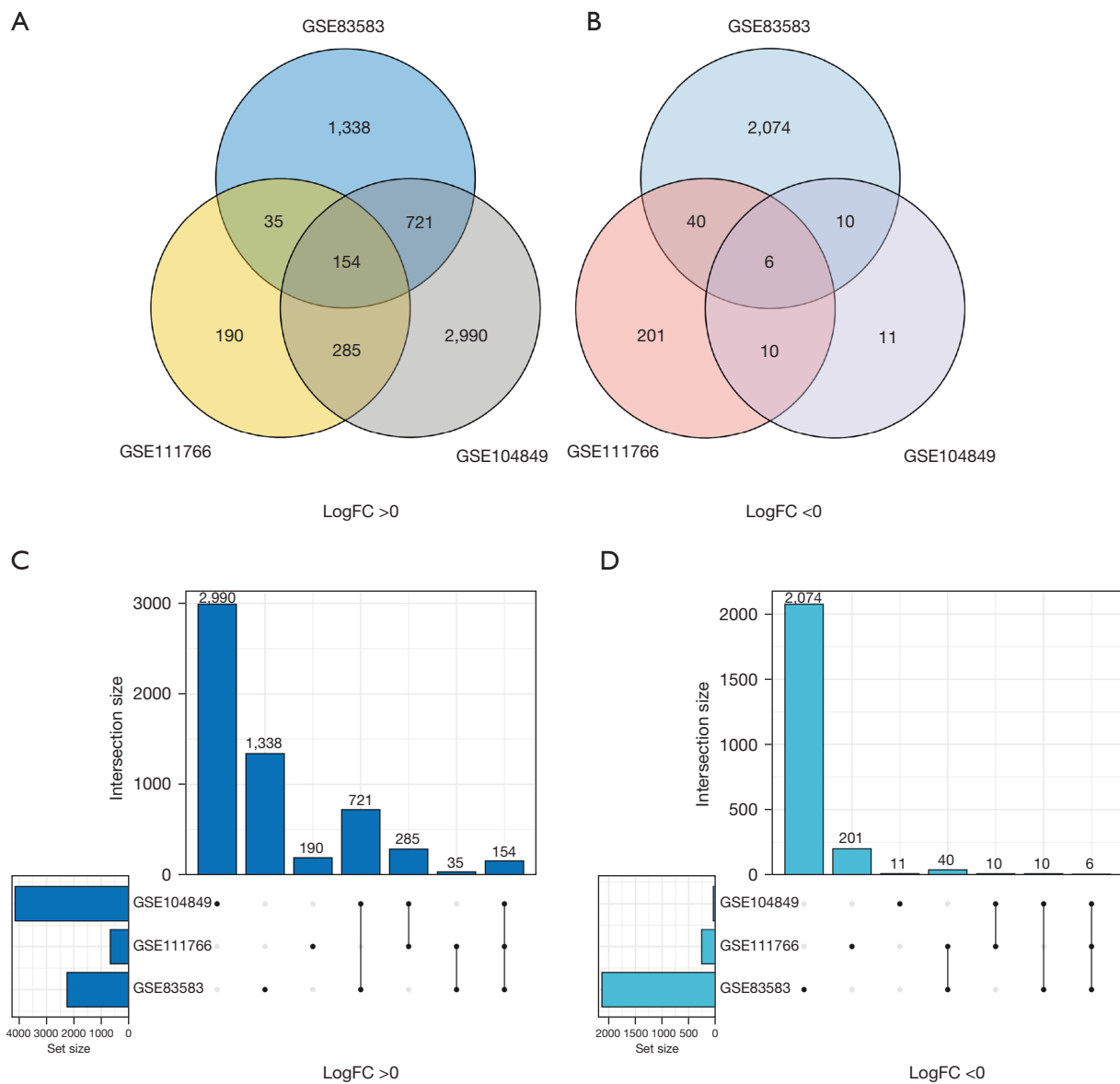


Figure 1 Authentication of 160 common DEGs in the 3 data sets (GSE83583, GSE111766, and GSE104849) using Venn diagram software (the different colors represent the different data sets and UpSet plots. (A,C) One hundred and fifty-four DEGs were upregulated in the 2 data sets ($\log_{FC} > 0$). (B,D) Six DEGs were downregulated in 3 data sets ($\log_{FC} < 0$). DEG, differentially expressed gene.

MFs, the upregulated DEGs were significantly enriched in the extracellular exosome, extracellular space, lysosomal membrane, melanosome, endoplasmic reticulum membrane and lysosomal lumen (no significant results were found for the downregulated DEGs) (see *Table 1*).

The KEGG analysis results are set out in *Table 2*. The upregulated DEGs were significantly enriched in Fc-gamma receptor-mediated phagocytosis, the erythroblastic oncogene B (erbB) signaling pathway, non-small cell lung

cancer, and the prolactin signaling pathway, while the downregulated DEGs were not significantly enriched in any signaling pathways ($P < 0.05$).

PPI network construction and module analysis

In total, 160 DEGs were input into the DEG-PPI network complex to examine the molecular mechanisms regulating SKCM progression. The PPI interaction network included

Table 1 GO analysis of DEGs in melanoma tissues

Expression	Category	Term	Count	%	P value	FDR
Upregulated	GOTERM_BP_DIRECT	GO:0043542~endothelial cell migration	4	2.649006623	0.001429913	1
	GOTERM_BP_DIRECT	GO:0001938~positive regulation of endothelial cell proliferation	5	3.311258278	0.002010012	1
	GOTERM_BP_DIRECT	GO:0010628~positive regulation of gene expression	8	5.298013245	0.004314346	1
	GOTERM_BP_DIRECT	GO:0006631~fatty acid metabolic process	4	2.649006623	0.007600221	1
	GOTERM_BP_DIRECT	GO:0071333~cellular response to glucose stimulus	4	2.649006623	0.007600221	1
	GOTERM_BP_DIRECT	GO:0007165~signal transduction	18	11.9205298	0.008212234	1
	GOTERM_CC_DIRECT	GO:0070062~extracellular exosome	41	27.15231788	5.21E-05	0.009220898
	GOTERM_CC_DIRECT	GO:0005615~extracellular space	24	15.89403974	2.38E-04	0.016008507
	GOTERM_CC_DIRECT	GO:0005765~lysosomal membrane	10	6.622516556	2.71E-04	0.016008507
	GOTERM_CC_DIRECT	GO:0042470~melanosome	6	3.973509934	0.001092801	0.048356431
	GOTERM_CC_DIRECT	GO:0005789~endoplasmic reticulum membrane	16	10.59602649	0.002606126	0.092256876
	GOTERM_CC_DIRECT	GO:0043202~lysosomal lumen	5	3.311258278	0.004176494	0.123206574
	GOTERM_MF_DIRECT	GO:0016491~oxidoreductase activity	7	4.635761589	0.004053253	1
	GOTERM_MF_DIRECT	GO:0042605~peptide antigen binding	3	1.986754967	0.018681714	1
	GOTERM_MF_DIRECT	GO:0015184~L-cystine transmembrane transporter activity	2	1.324503311	0.029757723	1
	GOTERM_MF_DIRECT	GO:0008083~growth factor activity	5	3.311258278	0.034060443	1
	GOTERM_MF_DIRECT	GO:0005125~cytokine activity	5	3.311258278	0.043985806	1
	Downregulated	None				

GO, Gene Ontology; DEG, differentially expressed gene; FDR, false discovery rate.

Table 2 KEGG pathway analysis of DEGs in the melanoma tissues

Pathway ID	Name	Count	%	P value	Genes
has04666	Fc-gamma R-mediated phagocytosis	5	3.31	0.005654767	<i>MARCKSL1, GSN, PRKCB, PIK3CD, AKT1</i>
hsa04012	ErbB signaling pathway	5	3.31	0.006400644	<i>STAT5A, ERBB3, PRKCB, PIK3CD, AKT1</i>
hsa05223	Non-small cell lung cancer	4	2.64	0.012041001	<i>PRKCB, PIK3CD, AKT1, FOXO3</i>
hsa04917	Prolactin signaling pathway	4	2.64	0.022686686	<i>STAT5A, PIK3CD, AKT1, FOXO3</i>

KEGG, Kyoto Encyclopedia of Gene and Genome; DEG, differentially expressed gene.

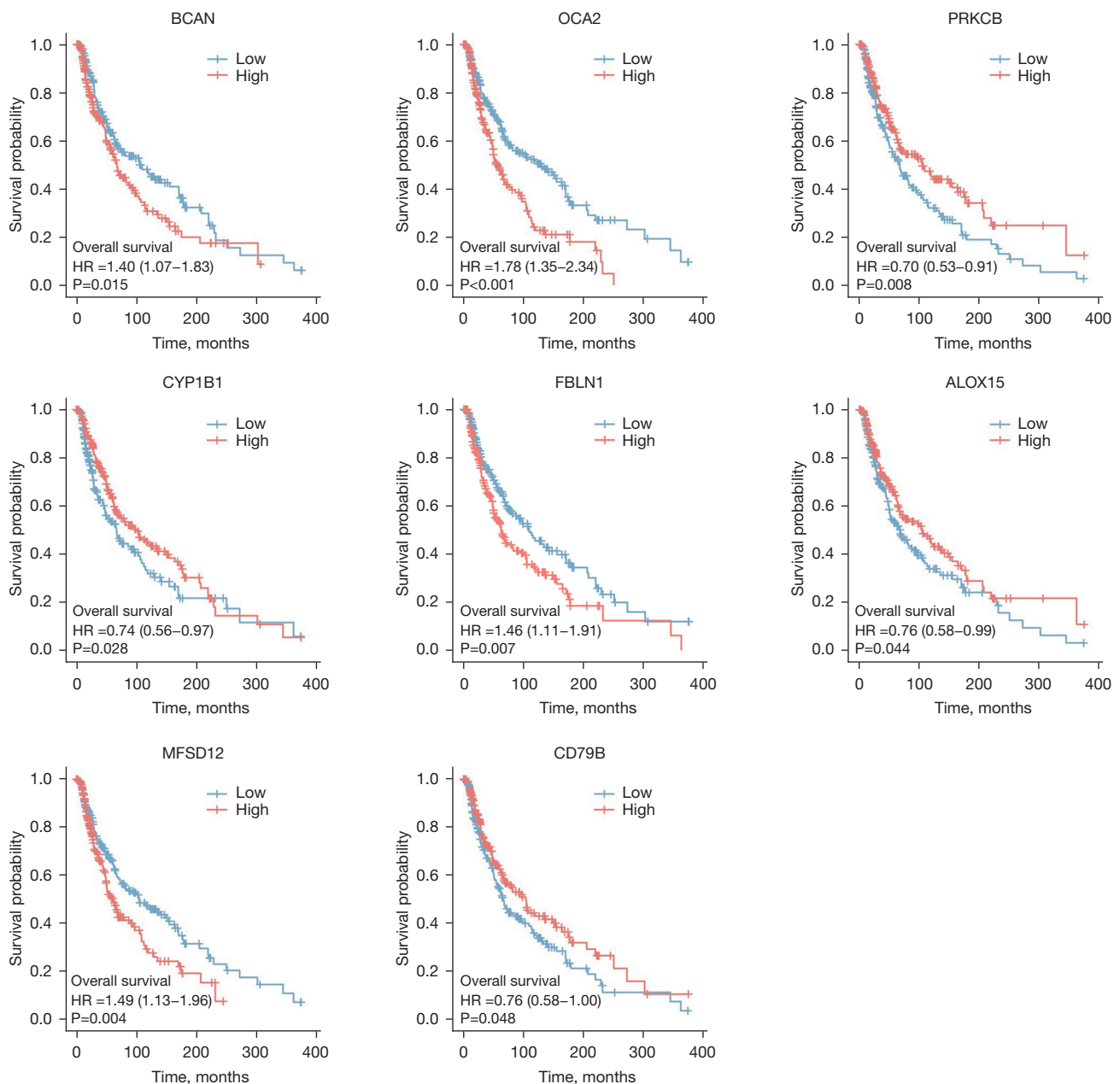


Figure 2 The overall survival analysis of the 19 core genes. Of the 19 genes, 8 had a significantly worse overall survival rate in SKCM patients (a P value <0.05 was considered significant). SKCM, skin cutaneous malignant melanoma.

210 edges and 89 nodes, and 88 upregulated genes were isolated, and 1 downregulated gene was isolated. Of the 160 DEGs, 71 were not contained in the DEG-PPI network (see [Figure S1B1](#)). Based on the PPI network, using Cytotype parameter settings, we applied the MCODE plug-in to further analyze the 89 nodes. The visual results identified 19 central nodes with upregulated genes (see [Figure S1B2](#)).

Analysis of core genes by the R software

The survminer package of R software was used to identify 19 core survival genes. Of these, 8 genes had a significantly worse overall survival in SKCM patient, while 11 had no significant effect ($P < 0.05$; see [Figure 2](#), [Figure S1B3](#)). Next, the R package, mainly ggplot2 (Version 3.3.3), was used

to quantify the expression levels of the 8 genes between the cancerous and normal tissues. We found that *CYP1B1*, *PRKCB*, P450 cytochrome oxidoreductase (*POR*), CD79b molecule immunoglobulin-associated beta (*CD79B*), major facilitator superfamily domain containing 12 (*MFS12*), and oculocutaneous albinism II (*OCA2*) had significant expression levels in the T1, T2, T3, and T4 SKCM tumor stages ($P < 0.05$; see *Figure 3* and *Figure S1C*).

Re-analysis of the 6 high correlation genes via DAVID, and the effects of the protein levels of the core genes on the survival of patients

To interpret the potential pathways of these 6 genes, the KEGG pathway enrichment data were re-analyzed ($P < 0.05$), and 2 genes (*PRKCB* and *CYP1B1*) were found to be significantly enriched in the microRNAs in the cancer pathway (see *Table 3*, *Figure S1D*, and *Figure S2*). The expression levels of *PRKCB* and *CYP1B1* were detected using immunohistochemistry from the HPA. The protein levels of the 2 core genes were significantly higher in the SKCM tissues than the normal tissues (see *Figure 4*).

Discussion

In the current study, we used 3 profile data sets (GSE83583, GSE111766, and GSE104849) to identify useful prognostic biomarkers in SKCM using bioinformatics methods. The present research examined 124 melanoma specimens and 9 normal melanocytes specimens. By using the GEO2R and R software, 160 commonly changed DEGs, including 154 upregulated and 6 downregulated DEGs, were identified. The results of the GO and KEGG enrichment analyses were as follows: (I) in relation to the BPs, the upregulated DEGs were significantly enriched in the cellular response to glucose stimulus, signal transduction, positive regulation of gene expression, endothelial cell migration, fatty acid metabolic process, positive regulation of endothelial cell proliferation, extracellular exosome (no significant results were found for the downregulated DEGs); (II) in relation to the MFs, the upregulated DEGs were enriched in oxidoreductase, peptide antigen binding, L-cystine transmembrane transporter activity, growth factor activity, and cytokine activity (no significant results were found for the downregulated DEGs); and (III) in relation to the CCs, the upregulated DEGs were particularly enriched in the extracellular exosome, extracellular space, lysosomal membrane, melanosome, endoplasmic reticulum membrane,

and lysosomal lumen (no significant results were found for the downregulated DEGs). The KEGG analysis revealed that the upregulated DEGs were significantly enriched in Fc-gamma receptor-mediated phagocytosis, the erbb signaling pathway, non-small cell lung cancer, the prolactin signaling pathway, while the downregulated DEGs were not enriched in any noteworthy pathways.

Using the STRING online database and Cytoscape software, we then constructed a DEG-PPI network complex, which included 89 nodes and 210 edges. The MCODE plug-in was used to screen 19 vital upregulated genes from the PPI network complex. Further, through the survminer package of the R software analysis and by plotting Kaplan-Meier survival curves, we discovered that 8 of the 19 genes had significantly worse overall survival in SKCM patients. In examining the 8 genes using R package (mainly ggplot2) we found that 6 genes were more highly expressed in the melanoma samples than the normal melanocyte samples. Ultimately, we re-analyzed 6 genes via a KEGG enrichment analysis and determined that 2 genes (i.e., *PRKCB* and *CYP1B1*) were enriched in the microRNAs of cancer tissues. These genes could potentially serve as novel molecular biomarkers and improve the diagnosis and prognosis of SKCM patients. In the future, we look forward to using computer AI-assisted technology and animal models to combine our experimental results to provide new candidate targets for the treatment of SKCM.

The *CYP1B1* gene is a member of the extrahepatic xenobiotic-metabolizing enzyme family, which is known to encode 1 of the cytochrome P450 superfamily members of the enzyme. The cytochrome P450 proteins are monooxygenases that can accelerate the synthesis of steroids, other lipids, and cholesterol and drug metabolism. The enzyme encoded by this gene is located in the endoplasmic reticulum and metabolizes 17beta-estradiol, polycyclic aromatic hydrocarbons, and other carcinogens. A study of multiple biological pathways showed that single nucleotide polymorphisms (SNPs) near *CYP1B1*, which is a nevus gene, reached global significance in a bivariate analysis examining melanoma risk (18). Recent research has shown that certain germline mutations, such as *CYP1B1*, may contribute to the differential development of melanoma susceptibility (19). In 2016, Sumantran *et al.* reported that *CYP1B1*, which metabolizes most anti-cancer drugs, was more downregulated in melanoma samples than normal skin samples. The downregulation of *CYP1B1* in melanoma prevents estrogen-dependent hormonal carcinogenesis while protecting the dermis and epidermis from activating

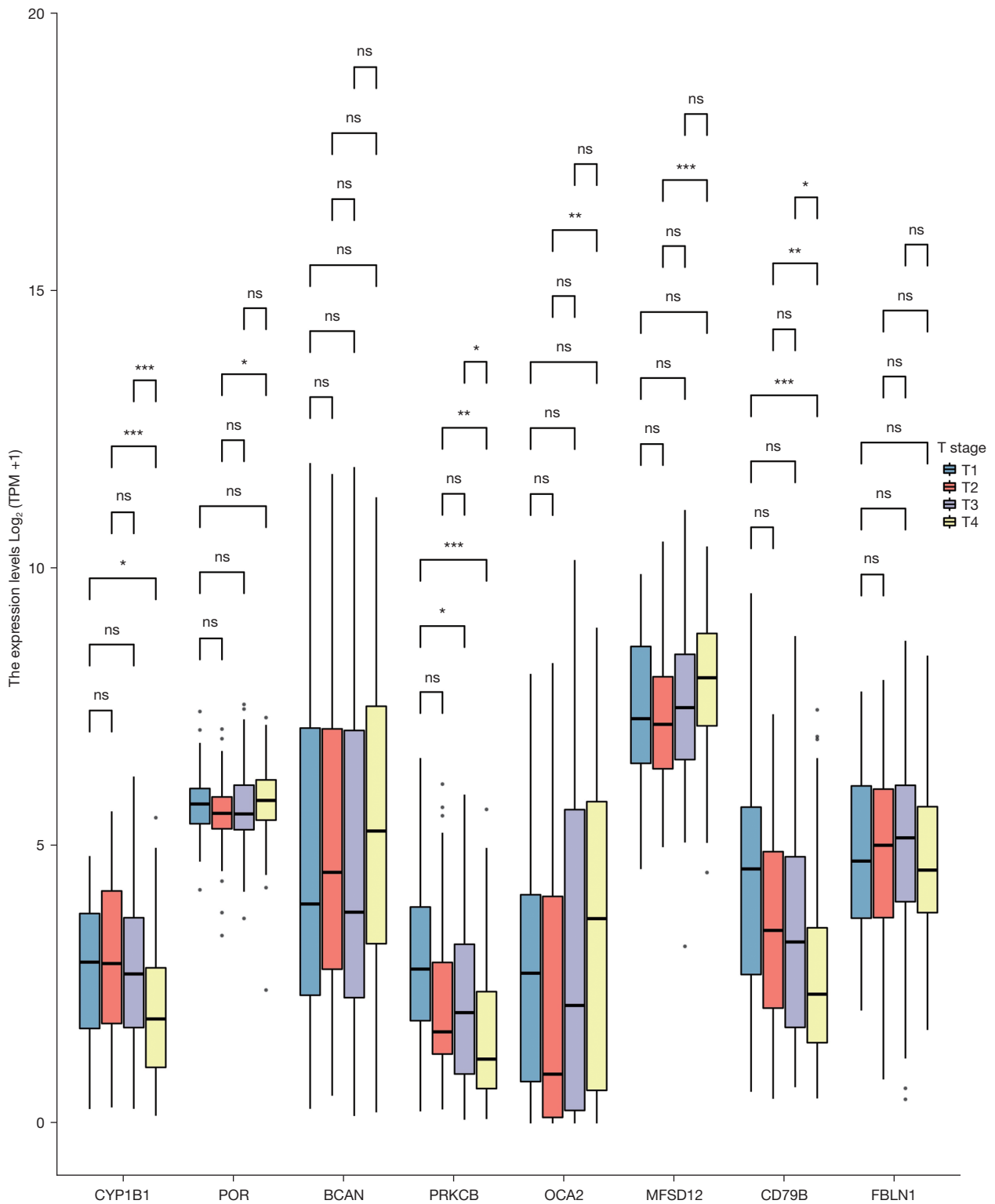


Figure 3 In total, 8 genes were related to a poor prognosis. Of the 8 genes, 6 had significant expression levels in the T1, T2, T3, and T4 SKCM stages (ns, no significant; $P \geq 0.05$; *, $P < 0.05$; **, $P < 0.01$; ***, $P < 0.001$). SKCM, skin cutaneous malignant melanoma.

many environmental mutagens (20). Additionally, the increased sensitivity to specific anti-cancer drugs led to the low expression of *CYP1B1*, and *CYP1B1* depletion might have an anti-cancer effect on melanoma (20). Further, in the protein kinase A (PKA) and protein kinase C (PKC) pathways, the parathyroid hormone induces an increase in endothelial nitric oxide synthase activity (21). PKC beta

II negatively regulates the HGF signaling process from growth factor receptor bound protein 2-associated protein 1 (Gab1) to phosphatidylinositol 3 kinase (PI3K), and the deletion of *CYP1B1* is very important for melanoma cells to obtain invasive potential the demarcation of HLA-DR/CD18 complex within or outside lipid rafts (21).

PRKCB (also known as protein kinase C beta) is a serine- and threonine-specific protein kinase family that can be activated by second messenger diacylglycerol and calcium. *PRKCB* family members are known to be involved in a variety of cellular signaling pathways and act as major receptors for phorbol esters (tumor promoters) (22,23). A wide variety of protein targets are phosphorylated by *PRKCB* family members. The protein encoded by this gene is a member of the *PRKCB* family. This protein kinase has

Table 3 KEGG pathway enrichment re-analysis of the 6 selected genes

Pathway ID	Name	Count	%	Genes
hsa05206	MicroRNAs in cancer	2	33.33	<i>PRKCB</i> , <i>CYP1B1</i>

KEGG, Kyoto Encyclopedia of Gene and Genome.

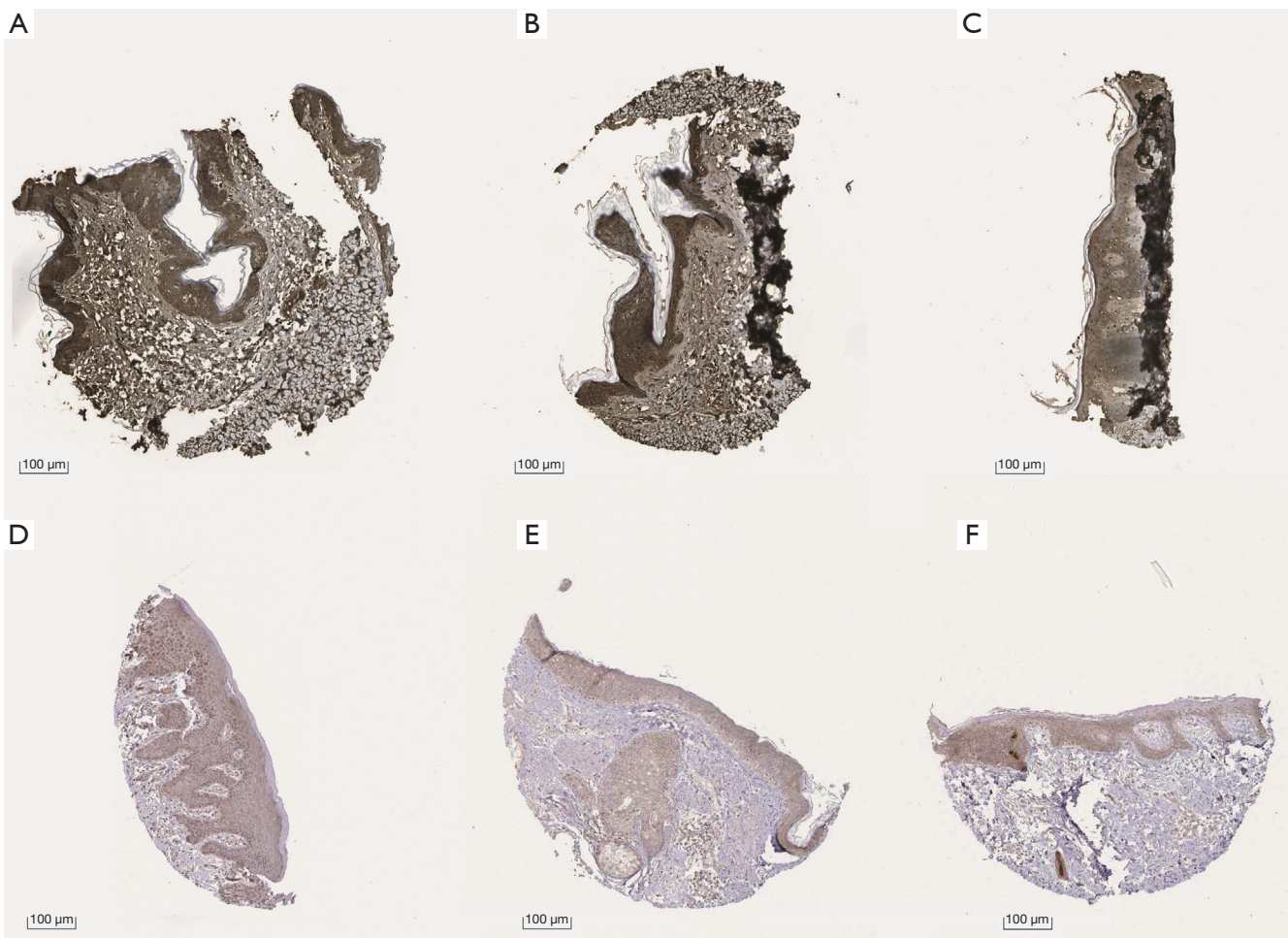


Figure 4 Verification at the protein levels of the 2 genes. The immunohistochemistry staining of *CYP1B1* (A-C) and *PRKCB* (D-F) from the HPA. HPA, Human Protein Atlas.

been reported to be involved in many different cellular functions, such as intestinal sugar absorption, apoptosis induction, endothelial cell proliferation, and B cell activation (24,25). In the 2018 World Health Organization's "multidimensional" classification of cutaneous melanocytic neoplasms, it was pointed out that fusions studies of *PRKCB* and other genes have been used as advanced molecular studies to carefully distinguish between severely atypical (high-grade) melanocytomas and "classical" melanomas (26). Thus, the importance of *PRKCA* as a related gene in melanoma research is clear.

Previous study has shown that tyrosinase is a rate-limiting enzyme of melanin production that interacts with *PRKCB* and be activated (27). Additionally, the *PRKCB* mutation affects tyrosinase and its sequential signal transduction, which hinders melanin production and increases the risk of melanoma (28). Banerjee *et al.* (29) showed that the *PRKCB* mutation has a significant effect on 2 crucial serine residues at the C-terminal of tyrosinase protein. This mutation can inactivate tyrosinase, hinder melanogenesis, and strongly increase the risk of developing melanoma. Voris *et al.* (30) found that as the functions of *PRKCB* include oxidative stress response and melanin production, colony formation in soft agar is inhibited when *PRKCB* is re-expressed in melanoma cells; thus, the loss of *PRKCB* in melanoma plays an important role in melanoma growth.

Conclusions

This study used bioinformatics methods to identify 2 DEGs (i.e., *CYP1B1* and *PRKCB*) in melanoma and normal melanocyte tissues based on 3 different microarray data sets from the same GPL platform. The results showed that *CYP1B1* and *PRKCB* play critical roles in the process of SKCM development. However, further experiments need to be conducted to verify the function and mechanism prediction of these genes. These findings may provide insights into and guidance on the potential biomarkers, therapeutic targets, and biological mechanisms of SKCM.

Acknowledgments

Funding: This work was funded by the Tianjin Science and Technology Committee (grant No. 18YFZCSY01090).

Footnote

Reporting Checklist: The authors have completed the

STREGA reporting checklist. Available at <https://atm.amegroups.com/article/view/10.21037/atm-22-1163/rc>

Conflicts of Interest: Both authors have completed the ICMJE uniform disclosure form (available at <https://atm.amegroups.com/article/view/10.21037/atm-22-1163/coif>). JW reports that this work was funded by the Tianjin Science and Technology Committee (grant No. 18YFZCSY01090). The other author has no conflicts of interest to declare.

Ethical Statement: The authors are accountable for all aspects of the work in ensuring that questions related to the accuracy or integrity of any part of the work are appropriately investigated and resolved. The study was conducted in accordance with the Declaration of Helsinki (as revised in 2013).

Open Access Statement: This is an Open Access article distributed in accordance with the Creative Commons Attribution-NonCommercial-NoDerivs 4.0 International License (CC BY-NC-ND 4.0), which permits the non-commercial replication and distribution of the article with the strict proviso that no changes or edits are made and the original work is properly cited (including links to both the formal publication through the relevant DOI and the license). See: <https://creativecommons.org/licenses/by-nc-nd/4.0/>.

References

1. Global Burden of Disease Cancer Collaboration, Fitzmaurice C, Abate D, et al. Global, Regional, and National Cancer Incidence, Mortality, Years of Life Lost, Years Lived With Disability, and Disability-Adjusted Life-Years for 29 Cancer Groups, 1990 to 2017: A Systematic Analysis for the Global Burden of Disease Study. *JAMA Oncol* 2019;5:1749-68.
2. Garbe C, Keim U, Gandini S, et al. Epidemiology of cutaneous melanoma and keratinocyte cancer in white populations 1943-2036. *Eur J Cancer* 2021;152:18-25.
3. Shah R, Patel N, Patel Y, et al. Age Demographics of Subjects Enrolled in Global, Interventional Phase 3 Melanoma Clinical Trials. *Ther Innov Regul Sci* 2022;56:184-90.
4. Moran B, Silva R, Perry AS, et al. Epigenetics of malignant melanoma. *Semin Cancer Biol* 2018;51:80-8.
5. Wang Y, Lian B, Si L, et al. Real-world analysis of clinicopathological characteristics, survival rates, and prognostic factors in patients with melanoma

- brain metastases in China. *J Cancer Res Clin Oncol* 2021;147:2731-40.
6. Govender P, Fashoto SG, Maharaj L, et al. The application of machine learning to predict genetic relatedness using human mtDNA hypervariable region I sequences. *PLoS One* 2022;17:e0263790.
 7. Popescu D, El-Khatib M, El-Khatib H, et al. New Trends in Melanoma Detection Using Neural Networks: A Systematic Review. *Sensors (Basel)* 2022;22:496.
 8. Agha A, Tarhini AA. Adjuvant Therapy for Melanoma. *Curr Oncol Rep* 2017;19:36.
 9. Huang B, Han W, Sheng ZF, et al. Identification of immune-related biomarkers associated with tumorigenesis and prognosis in cutaneous melanoma patients. *Cancer Cell Int* 2020;20:195.
 10. Davis S, Meltzer PS. GEOquery: a bridge between the Gene Expression Omnibus (GEO) and BioConductor. *Bioinformatics* 2007;23:1846-7.
 11. Conway JR, Lex A, Gehlenborg N. UpSetR: an R package for the visualization of intersecting sets and their properties. *Bioinformatics* 2017;33:2938-40.
 12. The Gene Ontology Consortium. The Gene Ontology Resource: 20 years and still GOing strong. *Nucleic Acids Res* 2019;47:D330-8.
 13. Kanehisa M, Goto S. KEGG: kyoto encyclopedia of genes and genomes. *Nucleic Acids Res* 2000;28:27-30.
 14. Huang da W, Sherman BT, Lempicki RA. Systematic and integrative analysis of large gene lists using DAVID bioinformatics resources. *Nat Protoc* 2009;4:44-57.
 15. Szklarczyk D, Franceschini A, Wyder S, et al. STRING v10: protein-protein interaction networks, integrated over the tree of life. *Nucleic Acids Res* 2015;43:D447-52.
 16. Shannon P, Markiel A, Ozier O, et al. Cytoscape: a software environment for integrated models of biomolecular interaction networks. *Genome Res* 2003;13:2498-504.
 17. Uhlén M, Fagerberg L, Hallström BM, et al. Proteomics. Tissue-based map of the human proteome. *Science* 2015;347:1260419.
 18. Duffy DL, Zhu G, Li X, et al. Novel pleiotropic risk loci for melanoma and nevus density implicate multiple biological pathways. *Nat Commun* 2018;9:4774.
 19. De Summa S, Lasorella A, Strippoli S, et al. The Genetic Germline Background of Single and Multiple Primary Melanomas. *Front Mol Biosci* 2020;7:555630.
 20. Sumantran VN, Mishra P, Bera R, et al. Microarray Analysis of Differentially-Expressed Genes Encoding CYP450 and Phase II Drug Metabolizing Enzymes in Psoriasis and Melanoma. *Pharmaceutics* 2016;8:4.
 21. Rashid G, Bernheim J, Green J, et al. Parathyroid hormone stimulates the endothelial nitric oxide synthase through protein kinase A and C pathways. *Nephrol Dial Transplant* 2007;22:2831-7.
 22. Zhang HL, Hu BX, Li ZL, et al. PKC β II phosphorylates ACSL4 to amplify lipid peroxidation to induce ferroptosis. *Nat Cell Biol* 2022;24:88-98.
 23. Zhu Z, Yang L, Zhang Y, et al. Increased expression of PRKCB mRNA in peripheral blood mononuclear cells from patients with systemic lupus erythematosus. *Ann Hum Genet* 2018;82:200-5.
 24. Kandasamy K, Mohan SS, Raju R, et al. NetPath: a public resource of curated signal transduction pathways. *Genome Biol* 2010;11:R3.
 25. Saltiel AR, Kahn CR. Insulin signalling and the regulation of glucose and lipid metabolism. *Nature* 2001;414:799-806.
 26. Ferrara G, Argenziano G. The WHO 2018 Classification of Cutaneous Melanocytic Neoplasms: Suggestions From Routine Practice. *Front Oncol* 2021;11:675296.
 27. Park HY, Perez JM, Laursen R, et al. Protein kinase C-beta activates tyrosinase by phosphorylating serine residues in its cytoplasmic domain. *J Biol Chem* 1999;274:16470-8.
 28. Banerjee A, Ray S. Structural Exploration and Conformational Transitions in MDM2 upon DHFR Interaction from Homo sapiens: A Computational Outlook for Malignancy via Epigenetic Disruption. *Scientifica (Cairo)* 2016;2016:9420692.
 29. Banerjee A, Ray S. Structural insight with mutational impact on tyrosinase and PKC- β interaction from Homo sapiens: Molecular modeling and docking studies for melanogenesis, albinism and increased risk for melanoma. *Gene* 2016;592:99-109.
 30. Voris JP, Sitailo LA, Rahn HR, et al. Functional alterations in protein kinase C beta II expression in melanoma. *Pigment Cell Melanoma Res* 2010;23:216-24.
- (English Language Editor: L. Huleatt)

Cite this article as: Wang J, Yang J. Identification of significant genes with a poor prognosis in skin cutaneous malignant melanoma based on a bioinformatics analysis. *Ann Transl Med* 2022;10(8):448. doi: 10.21037/atm-22-1163

154 Up-regulated

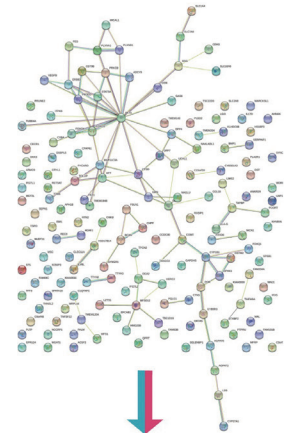
GAS6 NCCRP1 KCNIP5 FBLN1 DPP4 LSS MAP1LC5A
 TOM1 C6orf48 CIQTNF1 REC8 FAM53B TSC2D3 TSPO
 C15orf59 CTNS PQLC1 ILVBL LG3 FAM69C DPP7
 LIMS2 MFS012 NAGLU CYP1B1 NICN1 TPCN2 PALM
 CCL18 HS1BP3 AGPAT2 BMP1 CYB561A3 FOXO3
 VEGFB RTN2 CYB5R3 GRN OSBP15 IFI271 MARCKSL1
 SYNCR1 TBC1D16 POR KIAA0930 FOXO4 PIPRU
 TANGO2 SERP1 WFS1 TMEM120A STATA5A FAM234A
 HMG20B CRYL1 CYBA NAALADL1 BSC WDR81 CHPF
 CHKB KIAA0556 EPHX1 EFCAB1 PRKCB PLBD2 AKT1
 GSTM2 TOLLIP HERC2 QPRT UAP1L1 MICAL1 CTSD
 PLXNA1 DKK3 ANKRD9 OR7A5 OCA2 THNSL2 ERBB3
 SLC04A1-AS1 TMEMBA HTT GSN IFI272 ST5 MSC
 CFAPB1 TMEM184B MAL ACSF2 TNFSF12 CD79B
 TABBP COMT H2AF3 FCGRT UCHL1 NUDT11 CSRP9
 FXVD6 PRUNE2 SELENBP1 NINJ1 HSD17B14 ADCY9
 MCF2L PLXNB1 AHNK1 TTYH2 PYCARD MGAT1
 CYP27A1 GAPDH5 HLA-G TFF3 APH1B CIQTNF5
 TUBB4A GPAT4 KLHDCCB TMEM140 BCAN SPSB1 GBA
 PLTP RETSAT FAM101B STXB2 SLC2A8 SYNC CDH3
 SLC1A4 IL17D ARMC9 CLEC11A MRPL44 FEZ1
 ADORA2 ITPKB PES NYNND1 LZTSL1 4400B SERPINF1
 SLC16A6 SLC7A8 PIK3CD CECR1 IRX5 TMEM204
 TTYH3 RASIP1

A

6 Down-regulated

ISM1 PLA2R1 SPATA18 LINC01279 DST FOXQ1

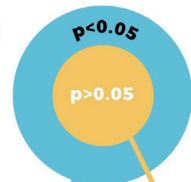
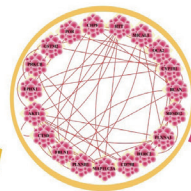
B1



B3



19 core genes



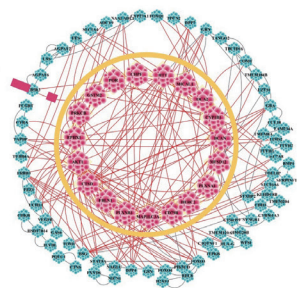
8 Genes with significantly worse survival

CYP1B1 POR BCAN PRKCB
 OCA2 MFS012 CD79B FBLN1

11 Genes without significantly worse survival

EPHX1 CTSD HTT AKT1 MICAL1 PLXNB1
 PLXNA1 HERC2 GSTM2 CHPF MAP1LC5A

B2



2 Genes without expressed in melanoma tissues (p > 0.05)

BACN FBLN1

6 Genes with high expressed in melanoma tissues (p < 0.05)

CYP1B1 POR PRKCB CD79B MFS012 OCA2

C

Two significant up-regulated DEGs with poor prognosis in SKCM

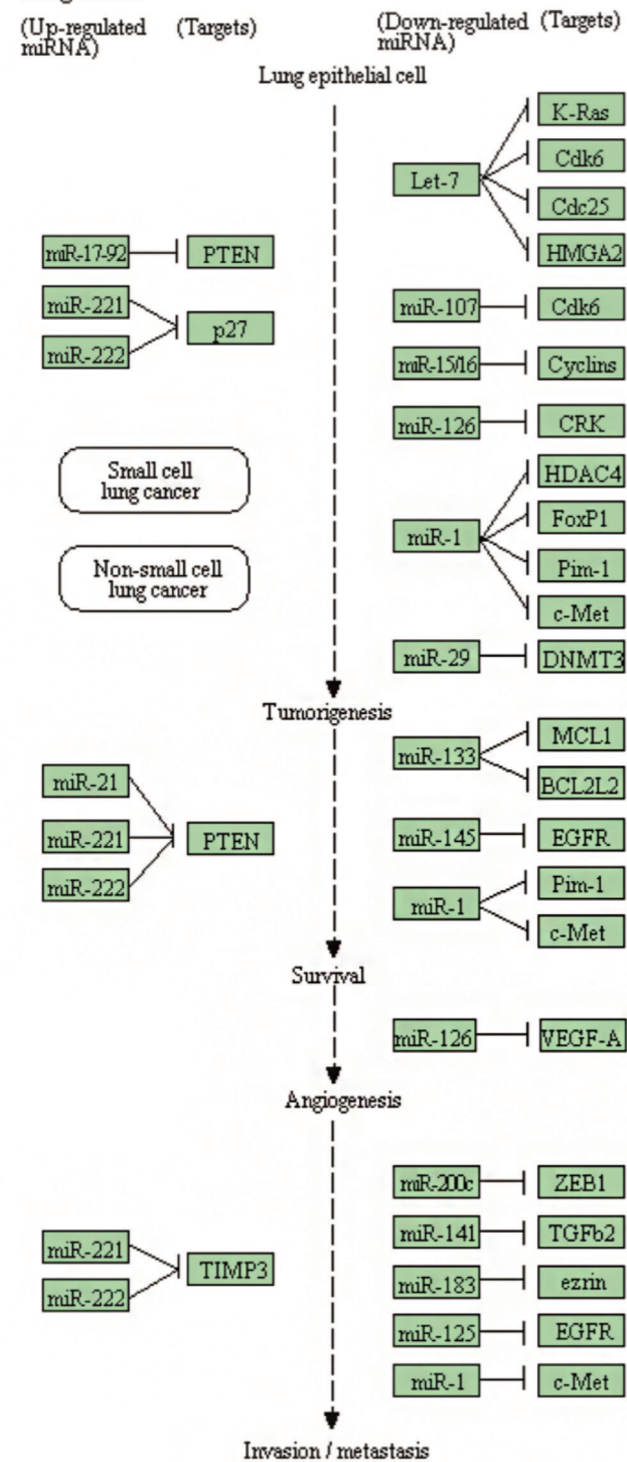
PRKCB CYP1B1

D

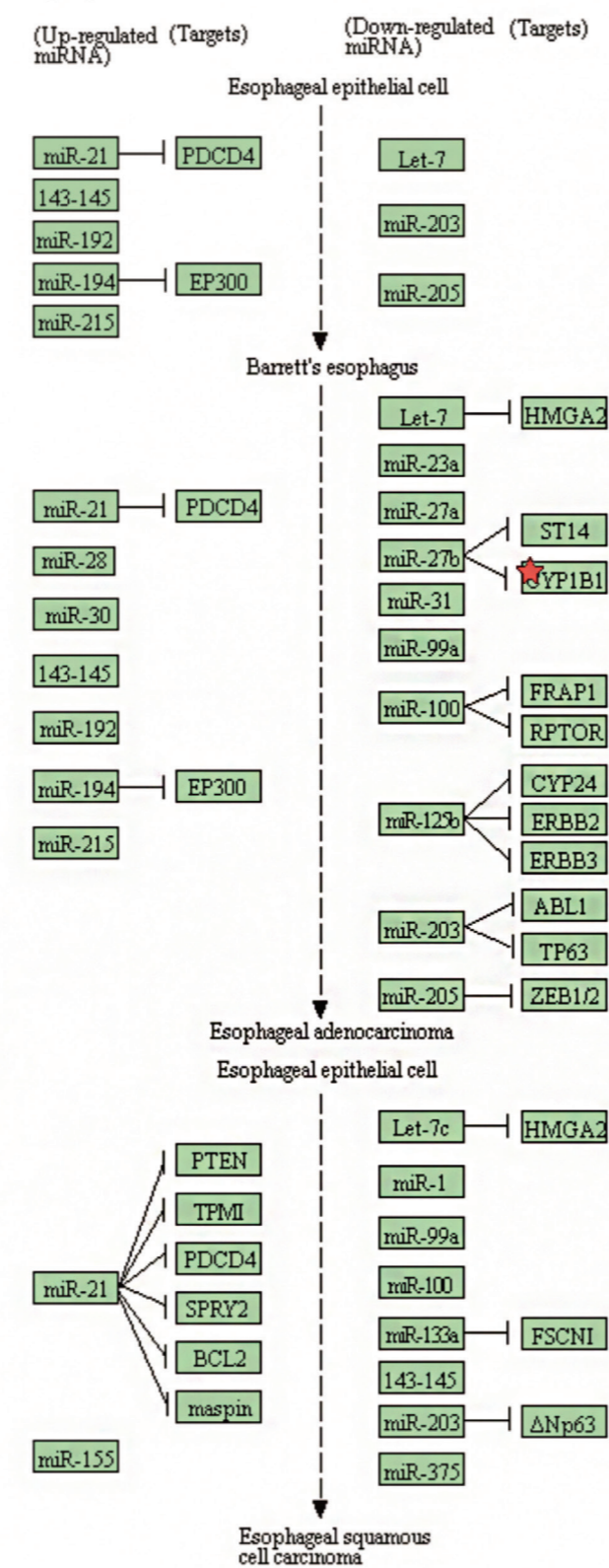
Figure S1 Data preprocessing. (A) All 160 common DEGs (154 upregulated genes and 6 downregulated genes). (B1) 89 DEGs are selected from 160 genes following a module analysis of the PPI network. (B2) The Cytoscape MCODE plug-in selected 19 genes. The red-gene models denote the selected genes. (B3) The prognostic information of the 19 key candidate genes. (C) Validation of 8 genes via R package. (D) 2 DEGs (*PRKCB* and *CYP1B1*) were identified and significantly enriched in the microRNAs in the cancer pathway. DEG, differentially expressed gene; PPI, protein-protein interaction; SKCM, skin cutaneous malignant melanoma.

MicroRNAs IN CANCER

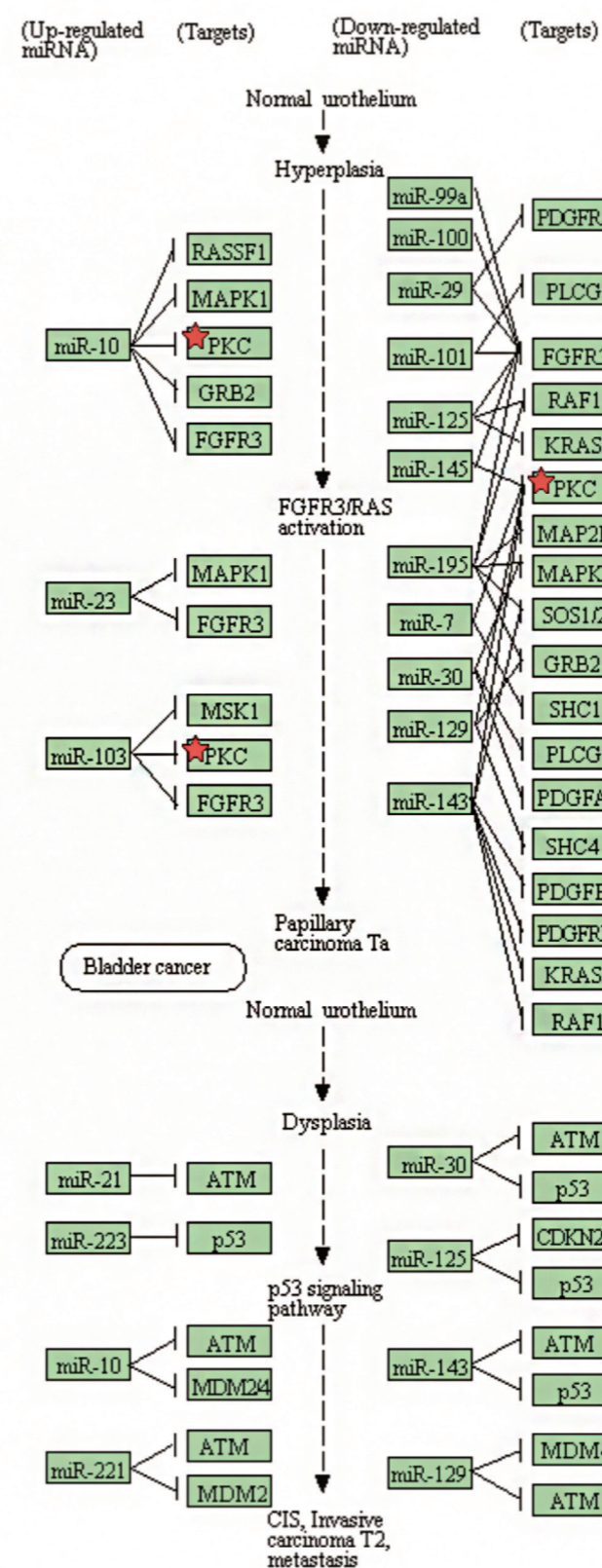
Lung cancer



Esophageal cancer



Bladder cancer



Prostate cancer

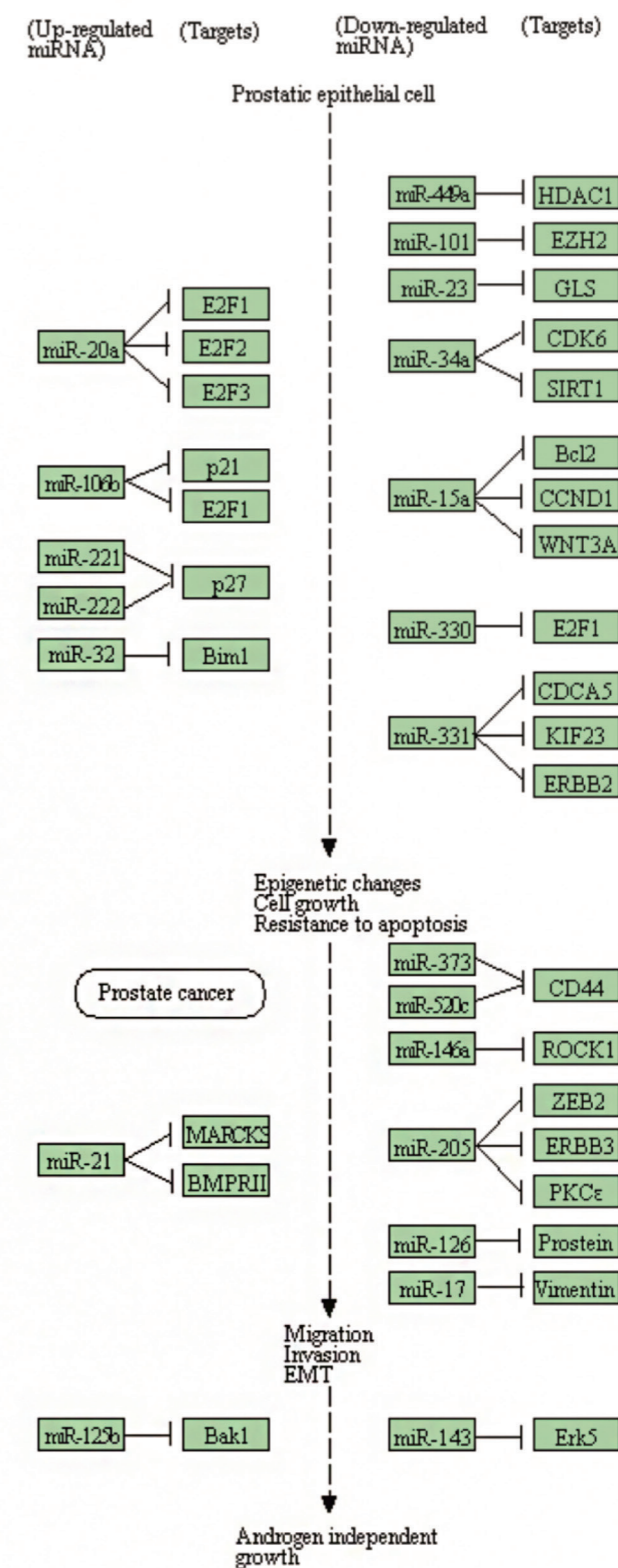


Figure S2 PRKCB and CYP1B1 were enriched in microRNAs in the cancer pathway. PKC refers to PRKCB.