



Erratum to SLC6A8 is involved in the progression of non-small cell lung cancer through the Notch signaling pathway

Editorial Office

Annals of Translational Medicine

Correspondence to: Editorial Office. Annals of Translational Medicine. Email: editor@atmjournals.org.

Submitted Apr 25, 2022. Accepted for publication May 05, 2022

doi: 10.21037/atm-2022-12

View this article at: <https://dx.doi.org/10.21037/atm-2022-12>

Erratum to: Ann Transl Med 2021;9:264

In the article entitled “SLC6A8 is involved in the progression of non-small cell lung cancer through the Notch signaling pathway” (1), GAPDH pictures mentioned below was misplaced and repeated incorrectly due to lack of picture editing of the article:

- (I) The GAPDH pictures of group H-1299 in Figures 2C, 4D and 5B were repeatedly used, which should be corrected as follows:

Figure 4D in H-1299 group needs to be changed to:

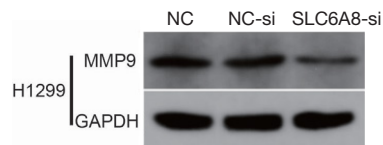
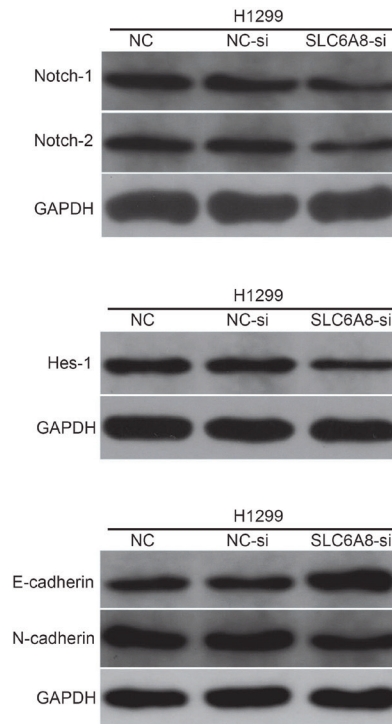


Figure 5B in H-1299 group needs to be changed to:



(II) The GAPDH pictures of group H-520 in Figures 2D, 4D and 5B were repeatedly used and should be corrected as follows:

Figure 4D in H-520 group needs to be changed to:

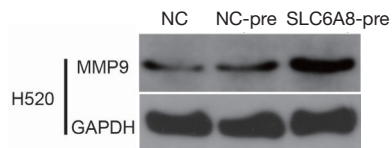
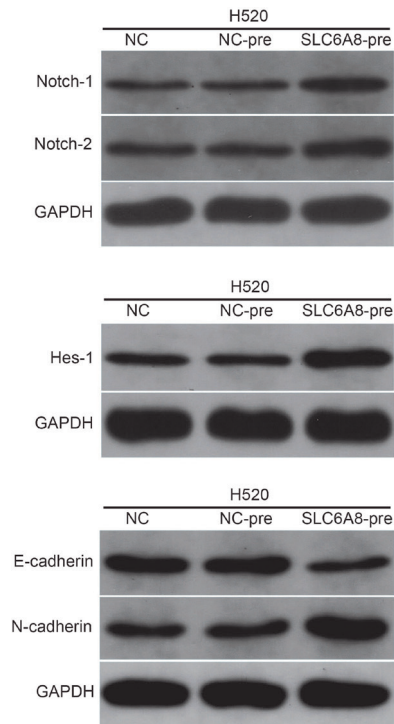


Figure 5B in H-520 group needs to be changed to:



The authors confirmed this error did not affect either the results or the conclusions of the paper.

Click [here](#) to view the updated version of the article.

Open Access Statement: This is an Open Access article distributed in accordance with the Creative Commons Attribution-NonCommercial-NoDerivs 4.0 International License (CC BY-NC-ND 4.0), which permits the non-commercial replication and distribution of the article with the strict proviso that no changes or edits are made and the original work is properly cited (including links to both the formal publication through the relevant DOI and the license). See: <https://creativecommons.org/licenses/by-nc-nd/4.0/>.

References

1. Feng Y, Guo X, Tang H. SLC6A8 is involved in the progression of non-small cell lung cancer through the Notch signaling pathway. *Ann Transl Med* 2021;9:264.

Cite this article as: Editorial Office. Erratum to SLC6A8 is involved in the progression of non-small cell lung cancer through the Notch signaling pathway. *Ann Transl Med* 2022;10(15):845. doi: 10.21037/atm-2022-12