

Effect art that dominates space

Go Ogawa

2455-3, Kamimizo, Chuo-ku Sagamihara-shi, Kanagawa, 252-0243, Japan

Correspondence to: Go Ogawa. 2455-3, Kamimizo, Chuo-ku Sagamihara-shi, Kanagawa, 252-0243, Japan. Email: gosigosigosi5454@yahoo.co.jp.

Submitted Oct 09, 2017. Accepted for publication Jan 21, 2018.

doi: 10.21037/cdt.2018.01.05

View this article at: <http://dx.doi.org/10.21037/cdt.2018.01.05>

I am inspired by the phenomenon of the galaxy of the universe and the light of the natural world and produce three-dimensional works and installations combining special film and various materials and surface processing.

By applying the refraction effect of light caused by the prism, the particles of light dispersed in multiple colors dominate the space, we are making efforts to create a

work that dramatically changes the visual environment by disturbing the viewer's awareness (*Figures 1-5*).

I am working on the theme of virtual images and real images. Through the prism, my look like no real image and colorless. However, the viewer can actually feel color and be moved. I think that I will continue to explore the boundary of art in the narrow space between the virtual image and the real image.

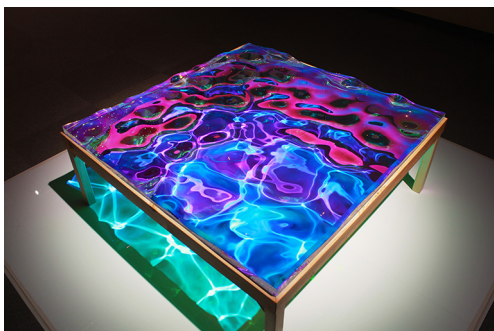


Figure 1 Liquid prism (Acrylic, special film, wood/H 40 cm, W 100 cm, D 100 cm).



Figure 3 Melt prism (Acrylic, special film/H 5 cm, W 50 cm, D 30 cm).

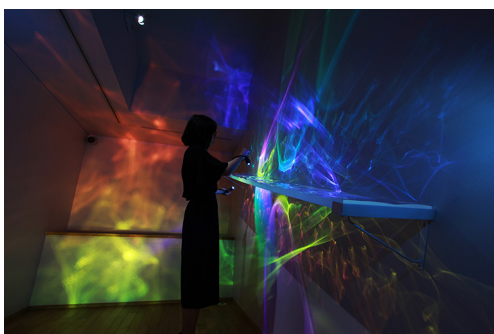


Figure 2 Luminous flux (Acrylic, special film/H 5 cm, W 200 cm, D 300 cm).

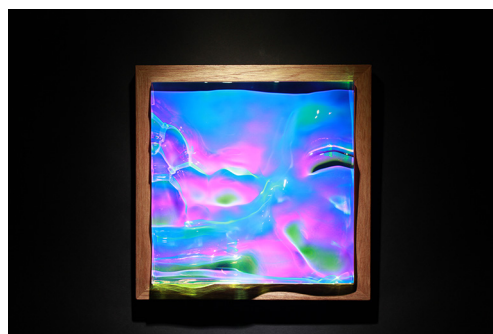


Figure 4 Liquid prism (Acrylic, special film, wood/H 33 cm, W 30 cm, D 5 cm).



Figure 5 Foam prism (Acrylic, special film, wood/H 22 cm, W 22 cm, D 5 cm).

Acknowledgements

None.

Footnote

Conflicts of Interest: The author has no conflicts of interest to declare.

Cite this article as: Ogawa G. Effect art that dominates space. *Cardiovasc Diagn Ther* 2018;8(5):694-695. doi: 10.21037/cdt.2018.01.05