

Comprehensive analysis of the lncRNA-miRNA-mRNA regulatory network for bladder cancer

Minyu Huang^{1#}, Yi Long^{1#}, Yuzhu Jin¹, Wentong Ya¹, Dongdong Meng¹, Tianzi Qin¹, Lize Su¹, Wei Zhou¹, Jichao Wu¹, Chunhe Huang², Qun Huang¹

¹Department of Urology, Affiliated Hospital of Youjiang Medical University for Nationalities, Baise, China; ²Department of Infectious Disease, Affiliated Hospital of Youjiang Medical University for Nationalities, Baise, China

Contributions: (I) Conception and design: M Huang, Y Long; (II) Administrative support: Q Huang, C Huang; (III) Provision of study materials or patients: Y Jin, W Ya; (IV) Collection and assembly of data: T Qin, L Su; (V) Data analysis and interpretation: M Huang, Y Long; (VI) Manuscript writing: All authors; (VII) Final approval of manuscript: All authors.

[#]These authors contributed equally to this work.

Correspondence to: Qun Huang, Department of Urology, Affiliated Hospital of Youjiang Medical University for Nationalities, No.18 Zhongshan 2nd Road, Baise 533000, China. Email: huangqundao@163.com; Chunhe Huang, Department of Infectious Disease, Affiliated Hospital of Youjiang Medical University for Nationalities, No.18 Zhongshan 2nd Road, Baise 533000, China. Email: ChunHeHuang@126.com.

Background: Long non-coding RNAs (lncRNAs) are essential regulators for various human cancers. However, these lncRNAs need to be further classified for cancer. In the present study, we identified novel competing endogenous RNA (ceRNA) network for bladder cancer (BC) and explored the gene functions of the ceRNA regulatory network.

Methods: Differential gene expression analysis were performed on The Cancer Genome Atlas Urothelial Bladder Carcinoma (TCGA-BLCA) datasets to identify differentially expressed messenger RNAs (mRNAs), lncRNAs, and microRNAs (miRNAs). Based on the competing endogenous RNA (ceRNA) hypothesis, a lncRNA-miRNA-mRNA network was constructed using the StarBase database and visualization by Cytoscape software. Functional enrichment analyses of Gene Ontology and the Kyoto Encyclopedia of Genes and Genomes (KEGG) pathway were performed via R package ClusterProfiler. The protein-protein interaction network was constructed by STRING database and visualization by Cytoscape. Finally, we used CIBERSORT and the TIMER database to analyze the immune infiltrations for BC.

Results: The regulatory network was constructed via TCGA BLCA cohort. The differential expressions of lncRNA, miRNA, and mRNA were 186, 200, and 2,661, respectively. There were 106 lncRNA, miRNA, and mRNA included in the ceRNA network. In this network, Calcium Voltage-gated Channel Auxiliary Subunit Alpha2delta1 (CACNA2D1, $P < 0.001$), domain containing engulfment adaptor1 (GULP1, $P = 0.001$), latent transforming growth factor beta binding protein 1 (LTBP1, $P = 0.006$), myosin light chain kinase (MYLK, $P = 0.001$), serpin family E member 2 (SERPINE2, $P = 0.002$), spectrin beta non-erythrocytic 2 (SPTBN2, $P = 0.047$), and hsa-miR-590-3p ($P < 0.001$) significantly affected the prognosis of BC patients. Functional enrichment analyses showed that the biological functions included negative regulation of protein phosphorylation, cell morphogenesis, and sensory organ morphogenesis. Important cancer pathways of KEGG included parathyroid hormone synthesis secretion action, the notch signaling pathway, MAPK signaling pathway, the Rap1 signaling pathway, signaling pathways regulating the pluripotency of stem cells, and the transforming growth factor- β signaling pathway. Our findings demonstrated that the ceRNA network has important biological functions and a significant influence on the prognosis of BC.

Conclusions: The lncRNA-miRNA-mRNA network constructed in the present study could provide useful insight into the underlying tumorigenesis of BC, and can determine new molecular biomarkers for the diagnosis and therapeutical treatment of BC.

Keywords: Bladder cancer (BC); competing endogenous RNA; long non-coding RNAs (lncRNAs)

Submitted Dec 17, 2020. Accepted for publication Mar 05, 2021.

doi: 10.21037/tau-21-81

View this article at: <http://dx.doi.org/10.21037/tau-21-81>

Introduction

Each year, there are 74,000 newly diagnosed bladder cancer (BC) patients in the USA and 430,000 worldwide, making it the fourth and 11th most common cancer among males and females, respectively (1,2). BC is divided into non-muscle-invasive BC (NMIBC) and muscle-invasive BC (MIBC). However, despite BC being the leading cancer type among all human cancers, most of BC patients are not well managed. According to an analysis of 2012 Surveillance, Epidemiology, and End Results Program data, 4,790 BC patients with high-grade NMIBC were diagnosed from 1992 to 2002, but only 1 patient received the recommended treatment (3). Despite advances in BC therapeutic regimens (e.g., chemotherapy, surgical, and radiotherapy), only about 60% of MIBC patients have a 5-year survival. The underlying pathogenesis of BC may be responsible for this; however, it is not well understood (4).

Tumorigenesis is a complex process significantly related to various genetic mutations, epigenetic alterations and chromosomal translocations (5). Non-coding RNAs (ncRNAs) are coded by the genome, but most of ncRNAs cannot be translated to proteins (6). Despite not being translated into proteins, ncRNAs have an essential role in multiple biological processes (BPs) (7). Long ncRNAs (lncRNAs; >200 nt) may be the most critical regulator of gene expression, cell growth, cell differentiation, cell development, and chromatin dynamics (8). However, the biological functions of lncRNAs still be needed to be further classified (9). Thousands of lncRNAs have been found to have aberrant expression or mutations in multiple cancer types (10). Prensner *et al.* revealed that prostate cancer antigen 3, prostate cancer gene expression marker 1, and prostate cancer-associated ncRNA transcript 1 (PCAT-1) have been observed in prostate cancer (11). PCAT-1 promotes prostate cancer cell proliferation via the upregulation of c-Myc in the post-transcriptional phase (12). The aberrant expression of lncRNAs have also been observed in breast cancer, lung cancer, colorectal cancer, and BC (13-16). The role of lncRNAs may differ in various cancers; even the same lncRNAs could have different biological functions in different cancers. The overexpression of MEG3 could accelerate apoptosis and inhibit the proliferation of BC

and lung cancer cells (17). However, the overexpression of linc-RoR has been found to promote epithelial-mesenchymal transition (EMT), drug resistance, and invasiveness of breast, pancreatic, and hepatocellular cancer cells (18). One of the significant molecular mechanisms of lncRNAs is competing endogenous RNAs (ceRNAs), which act as sponges of microRNA (miRNA). The aberrant expression of miRNAs has also found in many cancer types (19,20). Furthermore, they are significant regulators of tumorigenesis, progression, tumor suppressor, and drug resistance for various cancer types (21-23). Therefore, lncRNAs and miRNAs play an essential role in tumorigenesis, progression, and resistance. However, interactions between lncRNAs, miRNAs, and messenger RNAs (mRNA) still be needed to further investigated in BC.

In the present study, we investigated the potential biological functions and underlying pathological mechanisms of distinct lncRNAs, miRNAs, and mRNAs for BC using computational biology, further constructing a network to explore their relationship. The findings provide significant insight into the molecular mechanisms. Compared to Lyu *et al.* (24) and Wang *et al.* (25) studies, we not only investigated the Immune infiltration status between bladder cancer and normal tissue, we also explored the correlation expressed between the mRNA in BC ceRNA network and immune cells. Furthermore, we explored the immune cell types that significantly influence bladder cancer prognosis.

We present the following article in accordance with the MDAR reporting checklist (available at <http://dx.doi.org/10.21037/tau-21-81>).

Methods

Data preparation and differentially expressed gene analysis

Raw data of BC were collected from The Cancer Genome Atlas (TCGA) including transcriptome profiling and clinical data. Limma package (version 3.44.0) in R software (<https://www.r-project.org/>) was used to analyze and identify differentially expressed RNAs (including DE mRNAs and DE lncRNAs) and DE miRNAs with thresholds of $|\log FC| > 1.0$ and false discovery rate (FDR < 0.05). The package ggplot2 was used to construct the heatmap and volcano plot.

Construction of the ceRNA network

We constructed a ceRNA network base on the ceRNA hypothesis. Relevant miRNA target genes were obtained from StarBase, and only the targets which supported by experiments, including luciferase reporter assay, Western blot, Northern blot, or quantitative reverse transcription polymerase chain reaction, those we defined as the target genes. Only the DEmiRNAs were using to predict the target gene.

Biomarker screening and validation

The survival data of BC patients were extracted from TCGA. Subsequently, the RNAs identified in ceRNA network were selected for screening biomarkers. We used univariate Cox regression to screen prognostic RNAs ($P < 0.05$), and prognostic RNAs with expression levels significantly relevant to patients' overall survival ($P < 0.05$) were selected as primitive biomarkers.

Cox risk regression establishment and validation

The raw data of lncRNAs, mRNAs, and miRNAs were transformed and normalized in a $\log_2(\text{cpm}[x]+1)$ manner. Base on univariate Cox regression prognostic biomarkers, we performed multivariate Cox regression analysis combined with stepwise regression to establish a Cox risk model. We randomly selected half of the BC ($n=404$) samples to establish the risk model, another half of samples set and the total samples set were applied to validate the accuracy of the model. Finally, we identified the risk score as an independent prognostic factor from the clinical traits.

Protein-protein interaction analysis

DEmRNAs in the ceRNA network were used in the protein-protein interaction (PPI) network through the STRING (version 11.0) database (<https://string-db.org/>), with a confidence score > 0.4 .

Functional enrichment analysis

ClusterProfiler package in R was used for the Kyoto Encyclopedia of Genes and Genomes (KEGG) pathway and Gene Ontology enrichment analyses, including BP, cellular component (CC), and molecular function (MF). The ggplot2 and nrichplot packages were used to visualize the enrichment results.

Immune infiltration analysis

To explore the infiltration of immune cells into the tumor microenvironment, we used CIBERSORT to estimate the abundance profile of immune cells in 414 tumor samples, we only selected the P value of CIBERSORT algorithm less than 0.05 for the infiltration analysis, which followed by only 175 tumor samples. Furthermore, we used the TIMER database to explore the relationship between the significant influence on prognosis in DEmRNAs and immune cell infiltration in BC, and investigated the prognosis of immune cells in BC.

The study was conducted in accordance with the Declaration of Helsinki (as revised in 2013).

Statistical analysis

The differential genes were identified via limma package in R software (<https://www.r-project.org/>). The threshold for screening significantly expressed genes was set as log fold change $|\log\text{FC}| > 1$ and false discovery rate $\text{FDR} < 0.05$; The StarBase database was used to predict the miRNA target genes (<http://starbase.sysu.edu.cn/>), and the ceRNA network were visualization by Cytoscape software (version 3.8.1). The Kaplan-Meier method was used to perform the survival curves. Enrichment analysis (GO and KEGG) were used the cluterProfiler and enrichplot package; The PPI network was constructed via the STRING website with a confidence score > 0.4 ; The CIBERSORT package in R and TIMER database (<https://cistrome.shinyapps.io/timer/>) were used to estimate the tumor infiltrating immune cells. P value < 0.05 was seem as the significant difference.

Results

Differential expression of lncRNAs, miRNAs, and mRNAs

The differential expression analysis results showed that there were 59 downregulated and 129 upregulated lncRNAs, 121 upregulated and 79 downregulated miRNAs, and 1,726 downregulated and 935 upregulated mRNAs significantly expressed in the TCGA BC cohort, respectively ($P < 0.05$) (Figure 1).

Construction of the ceRNA network

We further used the StarBase dataset to investigate the interaction of DElncRNAs, DEmiRNAs, and DEmRNAs. The results showed that 6 DEmiRNAs (has-mir-18a-

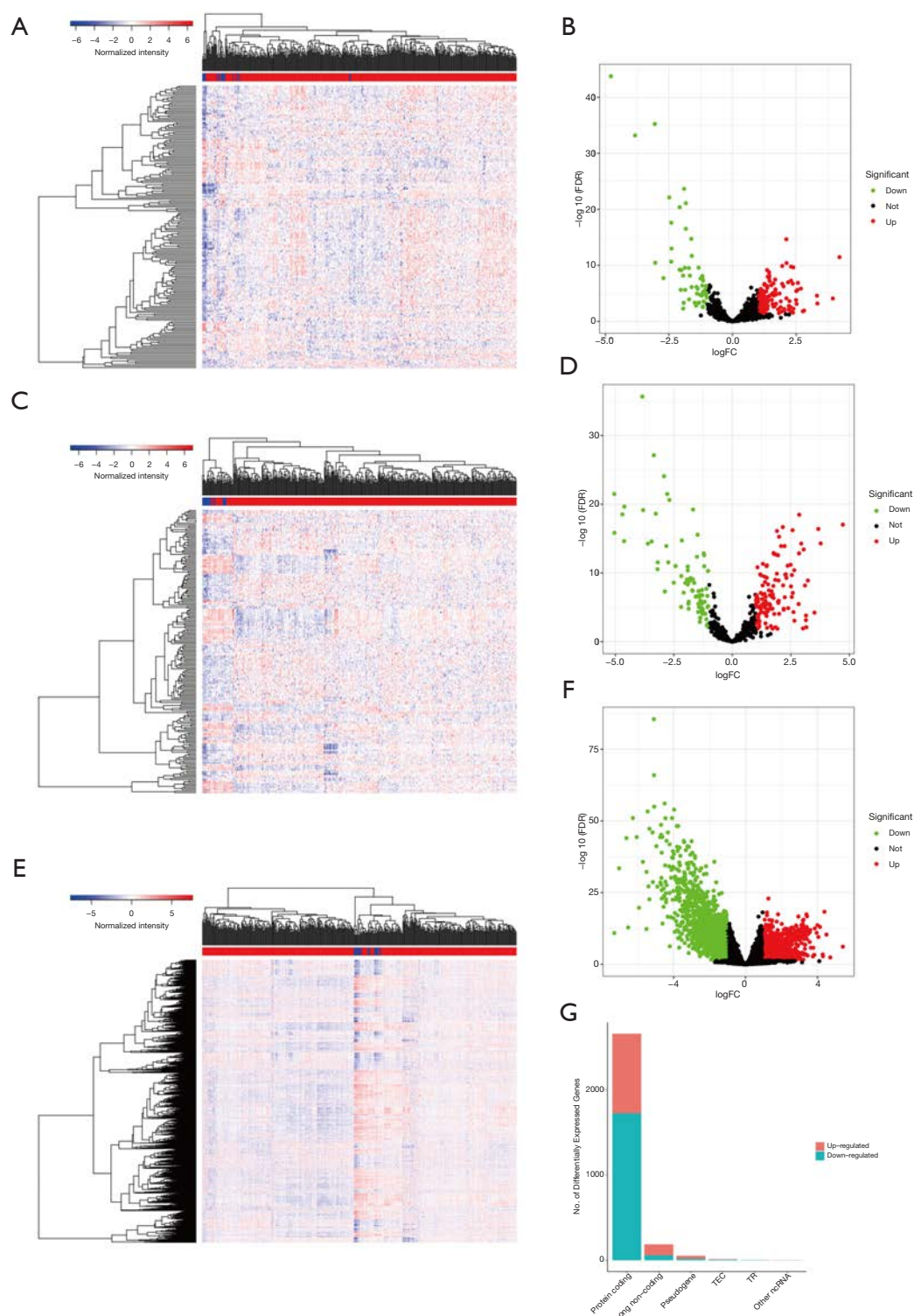


Figure 1 Analysis of differential expression of long non-coding RNAs (lncRNAs), microRNAs (miRNAs), and messenger RNAs (mRNAs) for The Cancer Genome Atlas bladder cancer cohort. (A,B) Heatmap and volcano plot of lncRNAs. (C,D) Heatmap and volcano plot of miRNAs (E,F). Heatmap and volcano plot of mRNAs. (G) Summary of all differential expression genes.

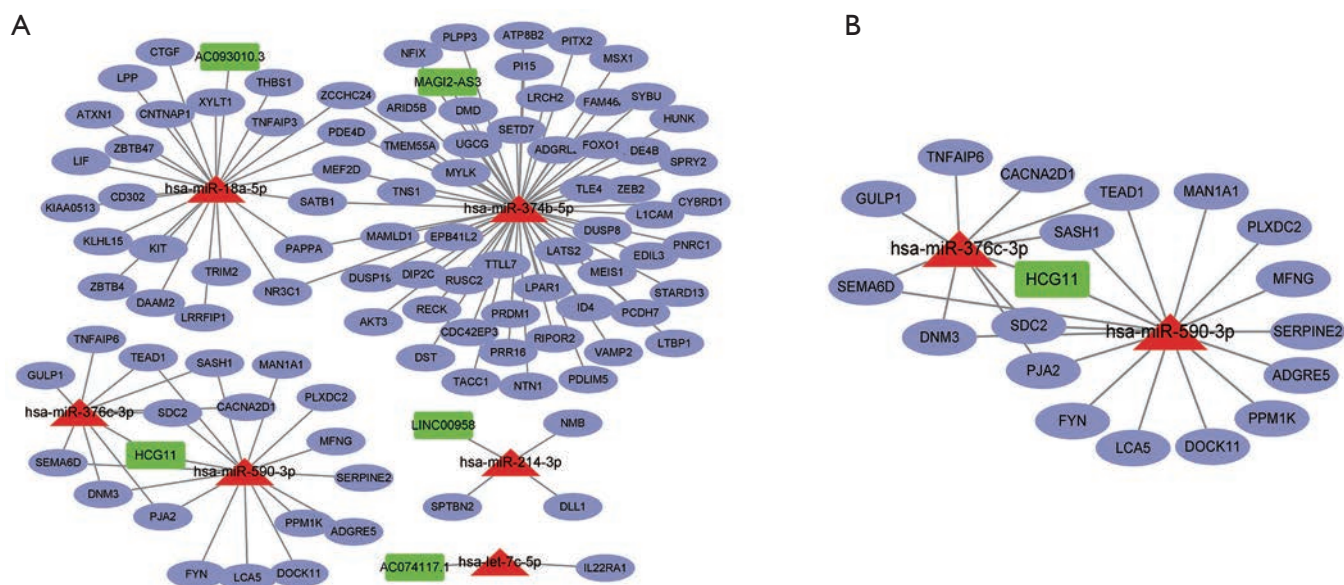


Figure 2 Competing endogenous RNA network constructed based on the significant differential expression of long non-coding RNAs, microRNAs, and messenger RNAs (StarBase). (A). The subnetwork at left bottom of ceRNA network (B).

5p, has-mir-347b-5p, has-mir-376c-3p, has-mir-590-3p, has-mir-214-3p, and has-let-7c-5p), 5 DElncRNAs (AC093010.3, MAGI2-AS3, HCG11, LINC00958, and ACO74117), and 97 DEMRNA were included in the ceRNA network (Figure 2A). One subnetwork showed that the potential interaction between lncRNA and miRNA and mRNA, such as lncRNA HCG11 (HLA complex group 11) may act as a sponge for has-miR-376c-3p to regulated mRNA Calcium Voltage-gated Channel Auxiliary Subunit Alpha2delta1 (CACNA2D1) (Figure 2B). The findings indicated that DElncRNAs regulated mRNA expression via interaction with miRNAs.

Cox model analysis

To explore the association DElncRNAs, DEMiRNAs, and DEMRNAs with the prognosis of BC, we used lncRNAs, miRNAs, and mRNAs in the ceRNA network to perform a Cox regression analysis combined with stepwise regression to establish a Cox risk model. There were 404 patients with complete clinical information be enrolled in the prognosis analyzed.

Training cohort showed that the high-risk patients had a shorter overall survival, the test cohort and all samples cohort also revealed that high-risk patients had a worse prognosis. (Figure 3A,B,C). These models predicted the

correct rates of 1-year overall survival [area under the curve (AUC) for all samples cohort: 0.688, training cohort AUC: 0.719, test cohort AUC: 0.659], 3-year overall survival (AUC for all samples cohort: 0.697, training cohort AUC: 0.75, test cohort AUC: 0.655), and 5-year overall survival (AUC for all samples cohort: 0.714, training cohort AUC: 0.788, test cohort AUC: 0.639), respectively (Figure 3D,E,F). The results of survival status of 3 cohorts showed in Figure 3G,H,I. These results showed that our model can be a good predictor for BC prognosis. There were six DEMRNAs [CACNA2D1: $P < 0.001$, domain containing engulfment adaptor1 (GULP1): $P = 0.001$, latent transforming growth factor beta binding protein 1 (LTBP1): $P = 0.006$, myosin light chain kinase (MYLK): $P = 0.001$, serpin family E member 2 (SERPINE2): $P = 0.002$, spectrin beta non-erythrocytic 2 (SPTBN2): $P = 0.047$] and 1 DEMiRNA (hsa-miR-590-3p: $P < 0.001$) with the significant influence on BC patients' prognosis in our risk model (Figure 4). The overexpression of CACNA2D1, GULP1, LTBP1, MYLK, SERPINE2, and SPTBN2 led to poor BC prognosis, but the overexpression of hsa-miR-590-3p appeared to be a favorable biomarker. We used univariate and multivariate analyses to determine the association between risk scores and clinical features. The findings indicated that this risk model was an independent predictive factor for BC prognosis (Figure 5).

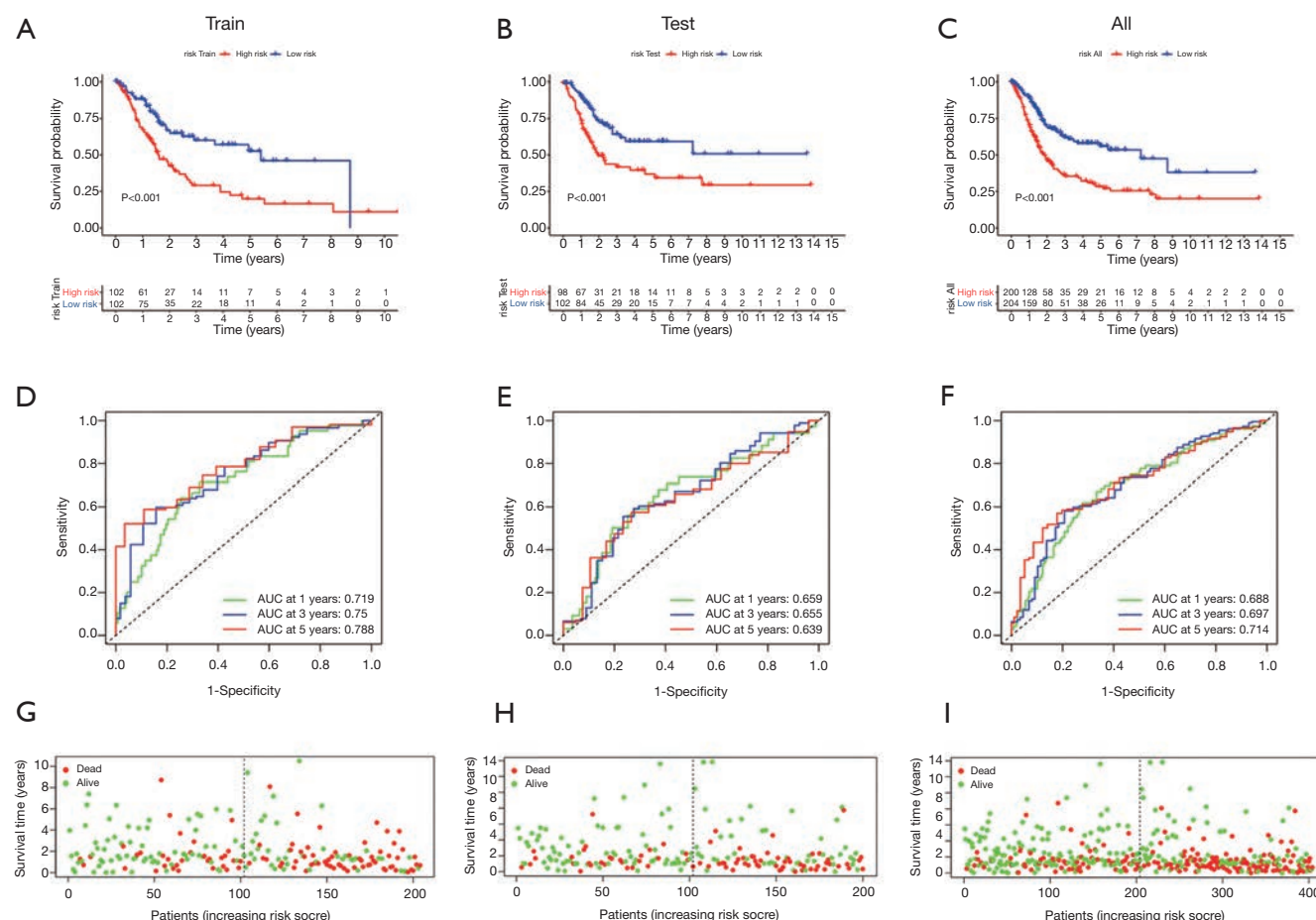


Figure 3 Constructions of a risk model base on the genes of competing endogenous RNA network. Kaplan-Meier curves of the risk model in train cohorts (A), test cohorts (B), all samples cohorts (C); the ROC curves of 1-, 3- and 5-year in Train cohorts (D), test cohorts (E), all samples cohorts (F); the distribution of survival status in train cohorts (G), test cohorts (H), All samples cohorts (I), red and green represents of dead and alive, respectively, and the dotted lines indicate the median risk scores between low-risk and high-risk groups.

Expression levels of individual genes of risk model between tumor and normal tissue

Compared to normal samples, hsa-miR-590-3p and SPTBN2 ($P<0.001$) were significantly upregulated in tumor samples (Figure 6A,B). The findings indicated that SERPINE2 ($P<0.001$), CACNA2D1 ($P<0.001$), GULP1 ($P<0.001$), LTBP1 ($P<0.001$), and MYLK ($P<0.001$) were significantly overexpressed in normal samples than BC samples (Figure 6C,D,E,F,G). These results indicated that these genes may also be a diagnostics biomarker for BC patients.

Functional enrichment analysis

We explored the potential biological functions of ceRNA.

The findings indicated that the top 5 BPs of DElncRNAs, DEMiRNAs, and DEMRNAs were the negative regulation of protein phosphorylation, positive regulation of cell projection organization, regulation of cell morphogenesis, ameboidal-type cell migration, and negative regulation of phosphorylation. The top 5 CCs were voltage-gated calcium channel complex, I band, Z disc, cell-substrate junction, and collagen-containing extracellular matrix. The top 5 MFs were cytokine binding, actin binding, DNA-binding transcription repressor activity, RNA polymerase II-specific DNA-binding transcription repressor activity, and protein self-association (Figure 7A,B,C). The results of the KEGG pathway analysis indicated that the top 10 pathways of DEMRNAs were parathyroid hormone synthesis, secretion and action, the notch signaling pathway,

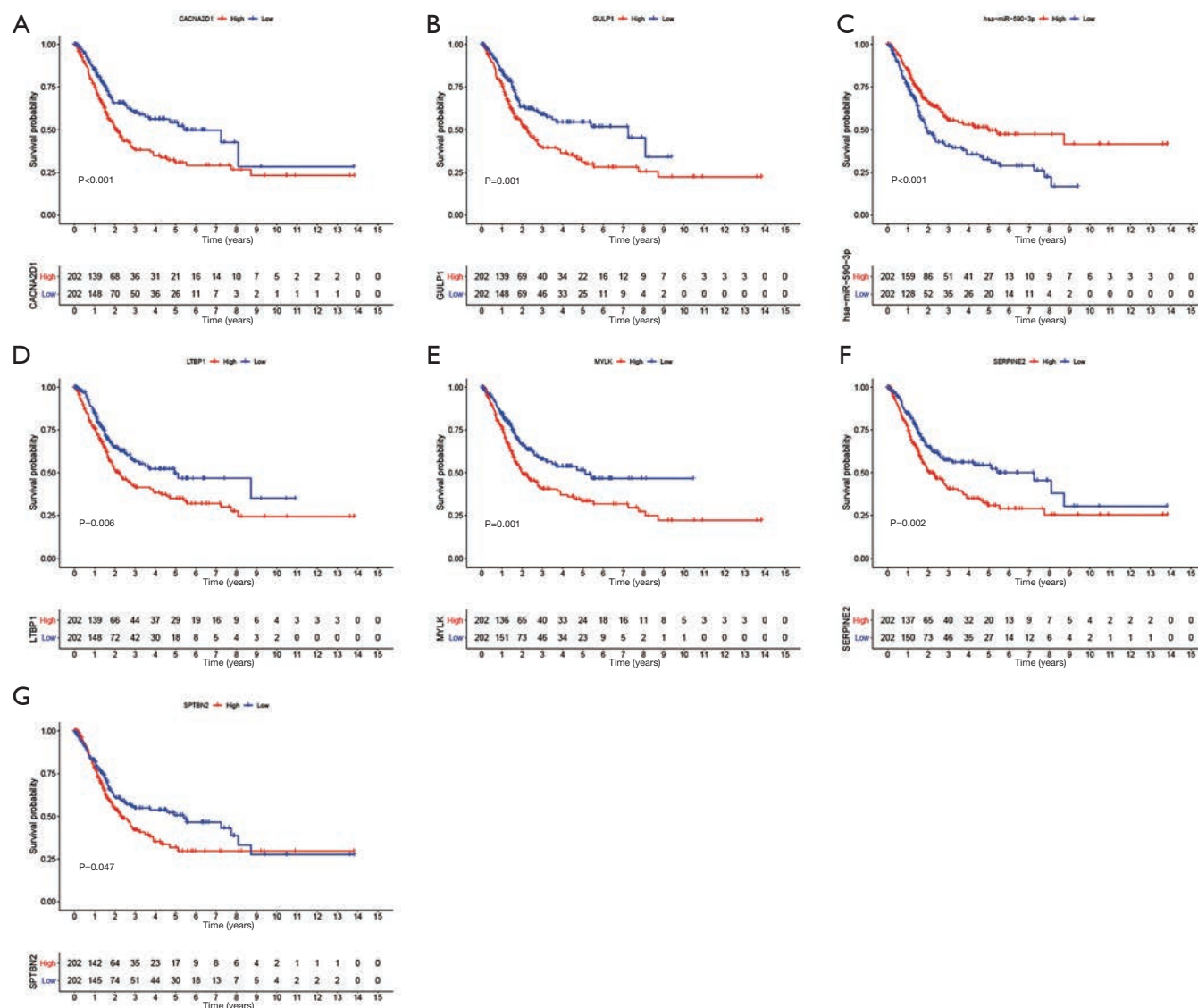


Figure 4 Overall survival analysis of single long non-coding RNAs, microRNAs, and messenger RNAs in the risk model. (A) The overall survival of CACNA2D1; (B) the overall survival of GULP1; (C) the overall survival of has-miR-590-3p; (D) the overall survival of LTBP1; (E) the overall survival of MYLK; (F) The overall survival of SERPINE2; (G) the overall survival of SPTBN2. CACNA2D1, Calcium Voltage-gated Channel Auxiliary Subunit Alpha2delta1; GULP1, domain containing engulfment adaptor1; LTBP1, latent transforming growth factor beta binding protein 1; MYLK, myosin light chain kinase; SERPINE2, serpin family E member 2; SPTBN2, spectrin beta non-erythrocytic 2.

the mitogen-activated protein kinase signaling pathway (MAPK), the Rap1 signaling pathway, focal adhesion, axon guidance, signaling pathways regulating the pluripotency of stem cells, the transforming growth factor- β (TGF- β) signaling pathway, the phospholipase D signaling pathway, and the tumor necrosis factor (TNF) signaling pathway (Figure 7C,D). The PPI network of the ceRNA network's

messenger RNA is shown in Figure 8.

Immune infiltration analysis

The results of the immune cell abundance profile of individual BC samples are shown in Figure 9A. The relationship between various immune cells and other immune

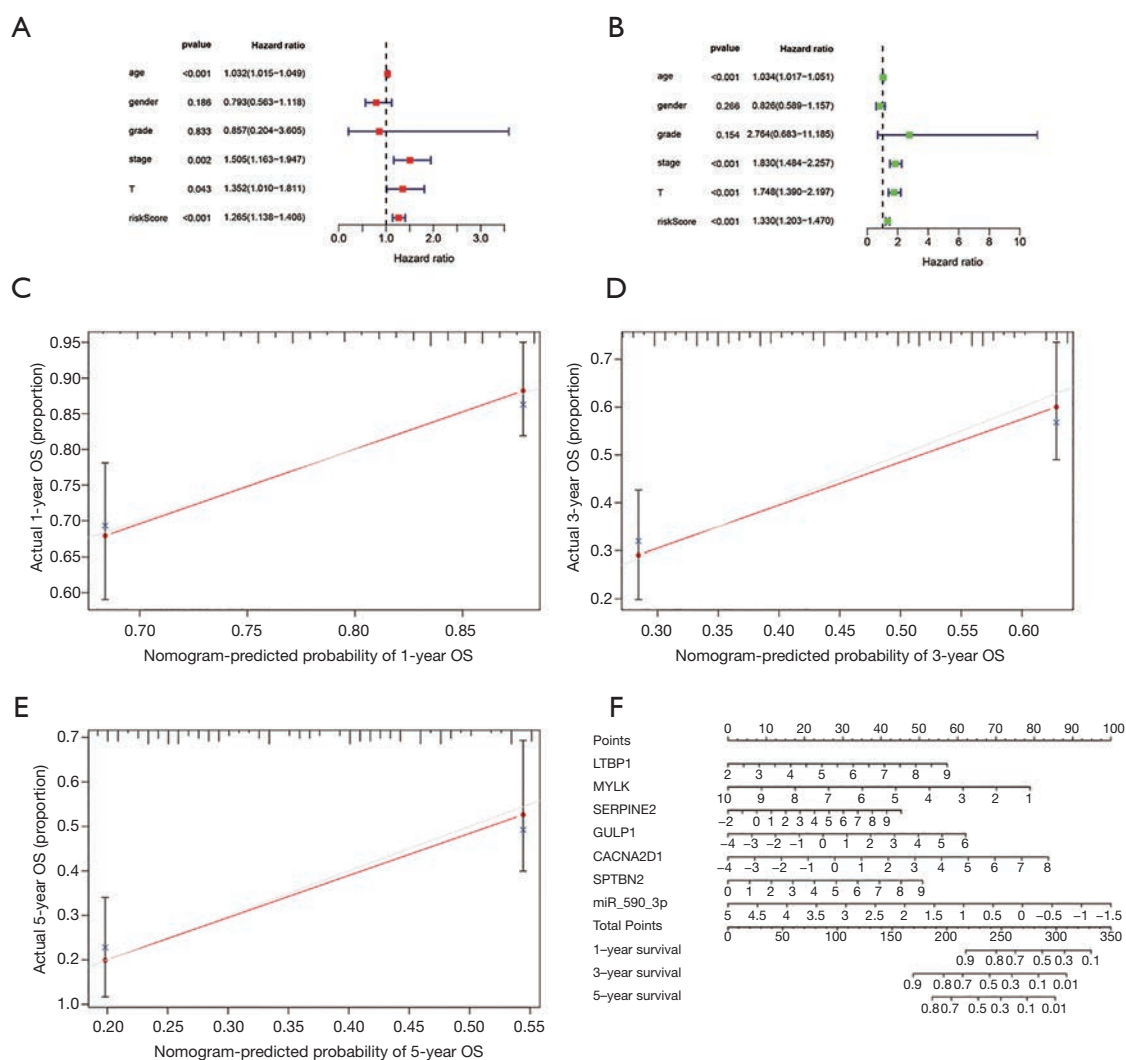


Figure 5 Prognostic analysis of different clinical features and risk scores for bladder cancer. (A,B) Univariate cox analysis and multivariate cox analysis between risk score and clinical features. Calibration plots of the nomogram for predicting OS at (C) 1-year, (D) 3-year and (E) 5-year for bladder cancer patient. (F) A seven-RNA risk model-based nomogram to predict 1-, 3- and 5-year OS in bladder cancer patients.

cells showed that macrophages (M0), neutrophils, and resting mast cells had a negative relationship with naïve B cells and T-cell CD4 memory activation (Figure 9B). Compared to tumor samples, normal samples had significantly higher naïve B cells, B cell memory, and monocyte cell infiltration, but significantly lower macrophage (M0) infiltration (Figure 9C). The prognostic role of immune cells for BC showed that higher naïve B cells and T-cell CD4 memory activation had a better prognosis for BC, but higher infiltration of macrophages (M0), resting mast cells, and neutrophils led to poor BC prognosis (Figure 10). The results showed that immune cells may have a significant influence on BC

prognosis via the regulation of other immune cell infiltration. Further, we explored the immune infiltration of our risk model's messenger RNA (mRNA), and the results showed that all mRNA were positive correlation with Macrophages, while MYLK, SERPINE2, and SPTBN2 had a negative correlation with B cell infiltration (Figure 11).

Discussion

With the exception of protein-coding gene mutations and aberrant expression, the mutations and dysregulation of ncRNAs, in particular lncRNA, appear to have an essential

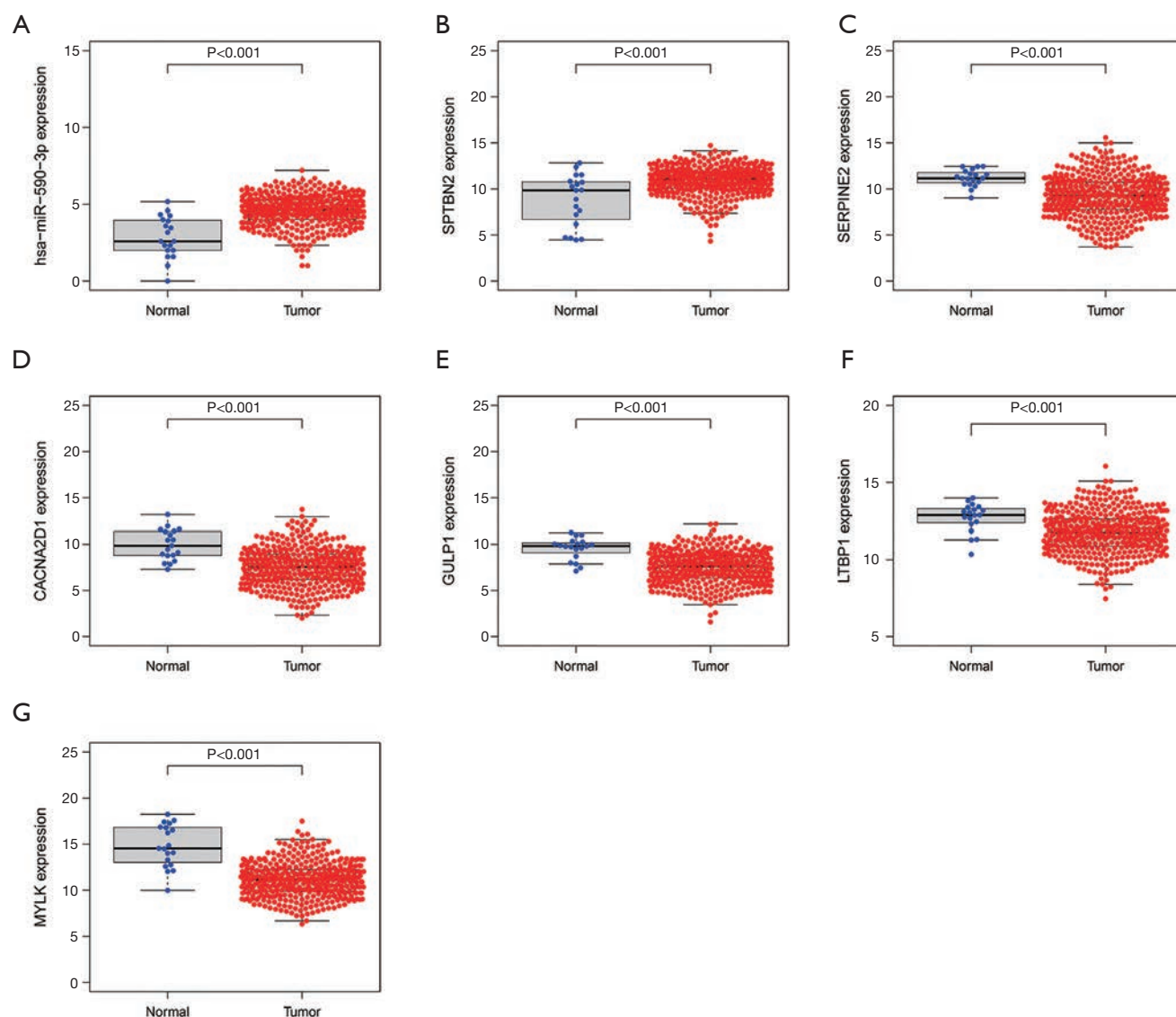


Figure 6 Expression levels of long non-coding RNAs, microRNAs, and messenger RNAs that significantly affect the prognosis of bladder cancer patients. (A) has-miR-590-3p; (B) SPTBN2; (C) SERPINE2; (D) CACNA2D1; (E) GULP1; (F) LTBP1; (G) MYLK. SPTBN2, spectrin beta non-erythrocytic 2; SERPINE2, serpin family E member 2; CACNA2D1, Calcium Voltage-gated Channel Auxiliary Subunit Alpha2delta1; GULP1, domain containing engulfment adaptor1; LTBP1, latent transforming growth factor beta binding protein 1; MYLK, myosin light chain kinase.

role in cancer's progress and prognosis. Many genome-wide associated studies of tumor samples have found that lncRNAs are significantly related to multiple cancer types. The aberrant expression and mutations of lncRNA can enhance tumorigenesis and metastasis, but several lncRNAs can act as tumor suppressors. Combined with miRNAs and target genes, lncRNA-miRNA-mRNA can serve as a

comprehensive network that regulates gene expression. It can also act as diagnostic and prognostic biomarkers, and even as therapeutic targets for various cancer types.

To date, several lncRNAs, such as Urothelial Cancer Associated 1 (UCA1), HOX Transcript antisense RNA (HOTAIR), and Imprinted Maternally Expressed Transcript (H19), have been observed in BC (26). The overexpression

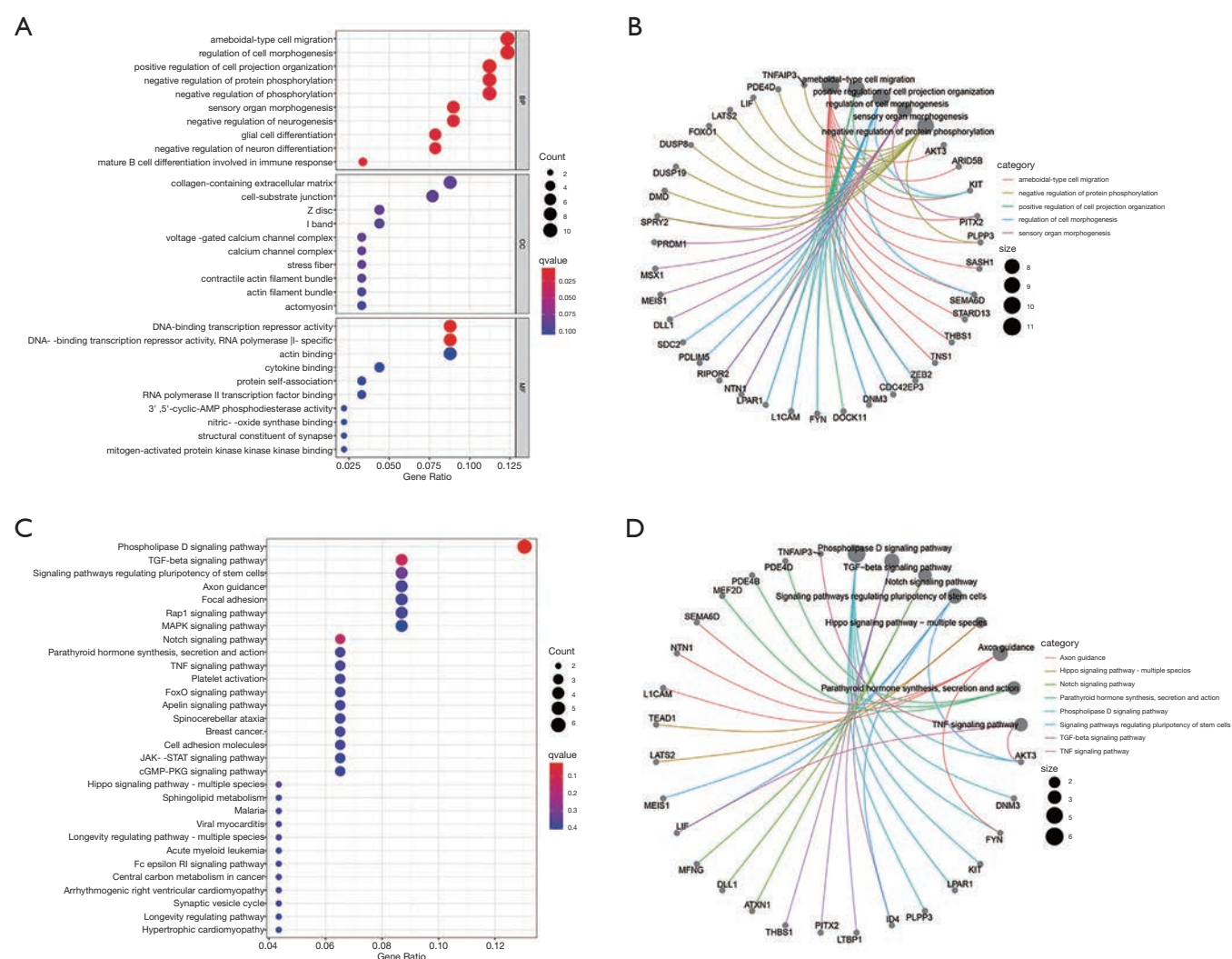


Figure 7 Functional enrichment analysis of the ceRNA network. (A,B) Biological process, cellular component, and molecular functions of the ceRNA network. (C,D) Potential pathways of the ceRNA network. ceRNA, competing endogenous RNA.

of UCA1 can promote chemoresistance via regulation of the Wnt signaling pathway, and it may act as a potential urine diagnostics biomarker for BC (26). Shang *et al.* found that HOTAIR was overexpressed in BC samples compared with normal samples, and the overexpression of HOTAIR enhances tumor cell proliferation and induces resistance to doxorubicin, and appears to be an adverse biomarker for BC (27). In their research, Ariel *et al.* found that H19 was overexpressed in BC patients, resulting in a greater risk of BC recurrence (28). The potential functions of lncRNAs in BC requires further investigation.

In the present study, we comprehensive analyzed the

regulatory network comprising lncRNAs, miRNAs, and mRNAs in a TCGA BC cohort. In total, 188 DELncRNAs, 200 DEMiRNA, and 2,661 DEMRNA were selected to construct the ceRNA network. Finally, 6 DEMiRNAs (has-mir-18a-5p, has-mir-347b-5p, has-mir-376c-3p, has-mir-590-3p, has-mir-214-3p, and has-let-7c-5p), 5 DELncRNAs (AC093010.3, MAGI2-AS3, HCG11, LINC00958, and ACO74117), and 97 DEMRNA were used for further analysis.

Potential mechanism of lncRNAs in regulating tumor's progress are under research; many lncRNAs regulate gene expression by acting as miRNA sponges (29). We used the

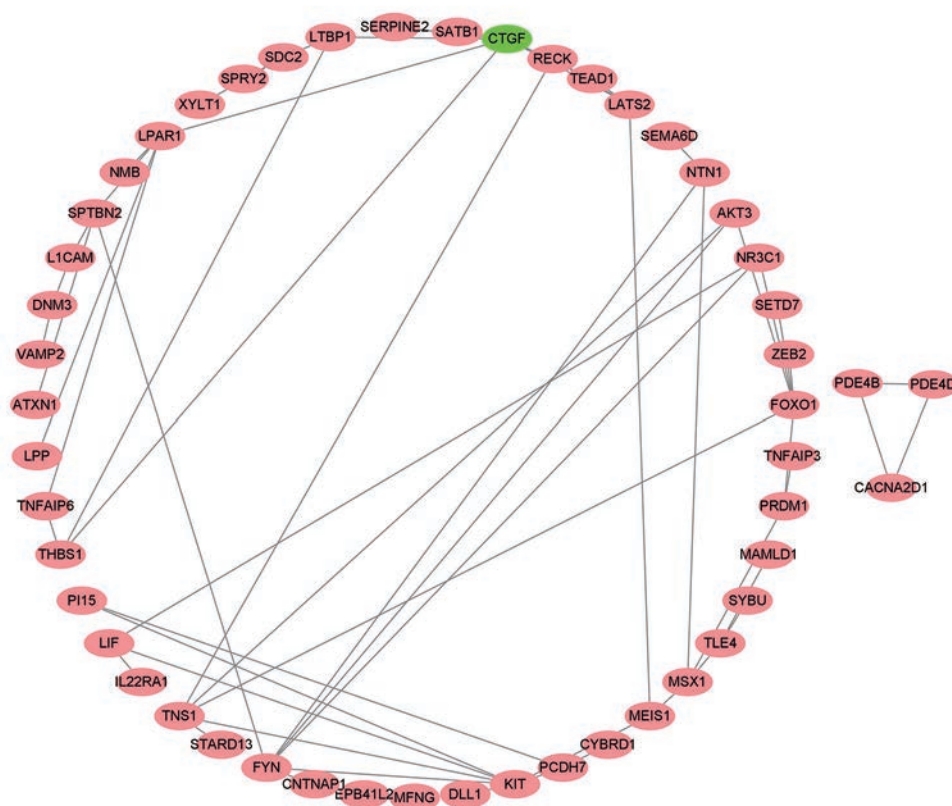


Figure 8 Protein-protein interaction network of competing endogenous RNA messenger RNA.

StarBase database to explore the ceRNA regulatory network of BC, and the results showed that AC093010.3, MAGI2-AS3, LINC00958, HCG11, and ACO74117 interacted with has-mir-18a-5p, has-mir-347b-5p, has-mir-214-3p, has-mir-376c-3p, has-mir-590-3p, and has-let-7c-5p, respectively.

We further used the ceRNA network to construct a model for predicting the prognosis of BC patients. The model (total, test, training) indicated that a high risk of BC led to poor outcomes for BC patients. Further analysis of the risk factors and other clinical features of BC prognosis showed that risk scores were an independent factor for predicting BC prognosis. The overexpression of CACNA2D1, GULP1, LTBP1, MYLK, SERPINE2, and SPTBN2 led to poor BC prognosis, but the overexpression of hsa-miR-590-3p appeared to be a favorable biomarker. Interestingly, Hayashi *et al.* showed that the downregulation of GULP1 could lead to cisplatin resistance (30). This indicates that the overexpression of CULP1 may act as a protector for BC. The overexpression of CACNA2D1

led to radioresistance non-small cell lung cancer stem-like cells (31). Cai *et al.* found that LTBP1 was overexpressed in esophageal squamous cell carcinoma (ESCC), and that the overexpression of LTBP1 was a promotor for ESCC progression via EMT and cancer-associated fibroblast transformation (32). Zhong *et al.* revealed that circular RNA MYLK acts as a ceRNA to accelerate the process of BC via regulating the Vascular Endothelial Growth Factor AVEGFA/Vascular Endothelial Growth Factor receptor 2 signaling pathway (33). Several studies have indicated SERPINE2 as a promotor for cancer progression (34,35). Du *et al.* showed that the overexpression of has-mir-590-3p could enhance chemoradiotherapy sensitivity for colorectal cancer (36). Based on these studies, we can conclude that DElncRNAs, DEMiRNAs, and DEMRNAs play a key role in tumorigenesis, tumor progression, and therapeutic response.

We not only explored the prognostic role of DElncRNAs, DEMiRNAs, and DEMRNA but also

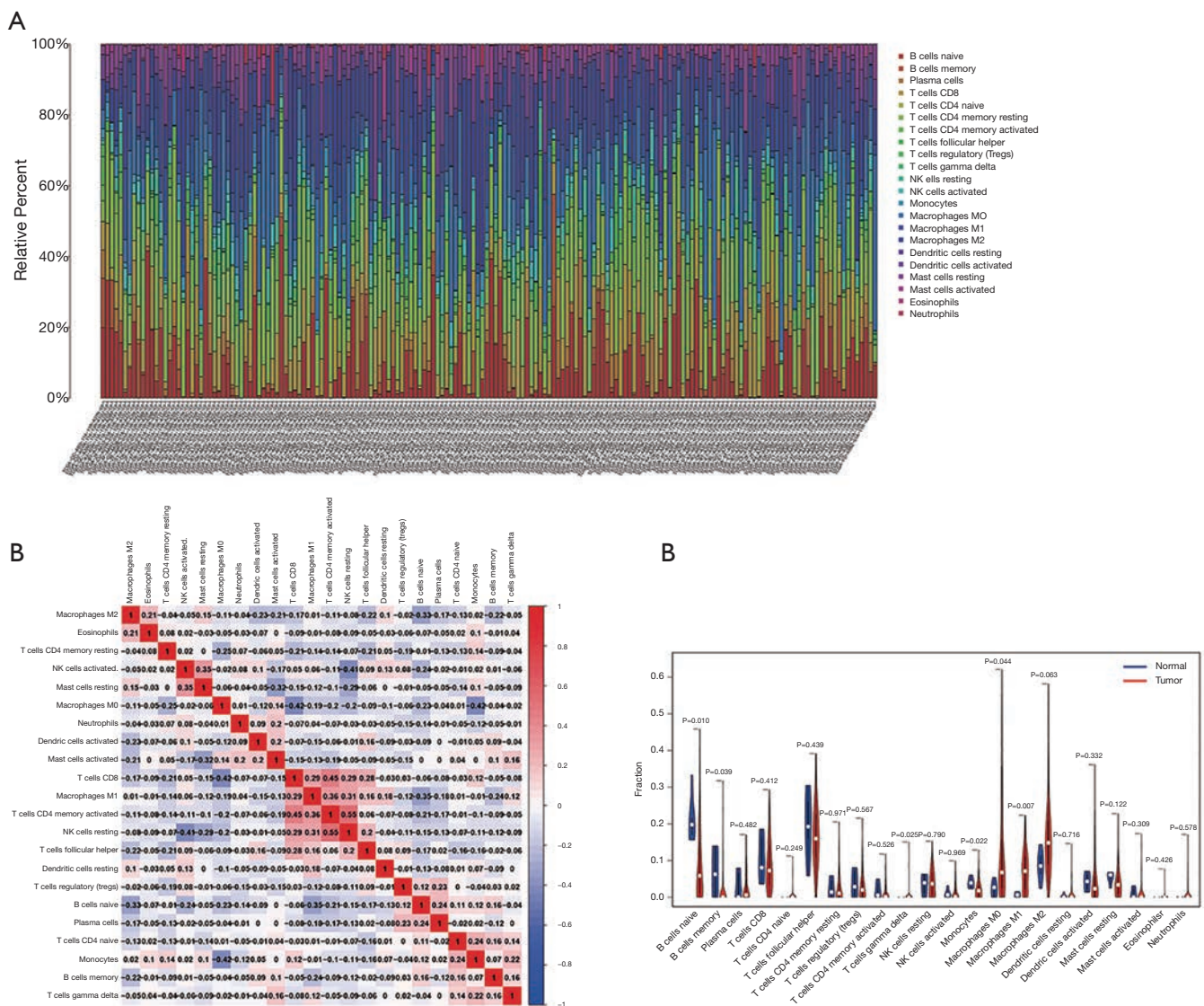


Figure 9 Analysis of immune infiltration for BC. (A) Results of immune cell abundance profile of individual BC samples. (B) Relationship between various immune cells and other immune cells. (C) Difference in immune cell infiltration between BC and normal samples. BC, bladder cancer.

investigated their underlying potential BP in BC. The results of the functional enrichment analysis demonstrated that DElncRNAs, DEMiRNAs, and DEMRNAs had several biological functions and were involved in several significant pathways, such as the negative regulation of protein phosphorylation, the notch signaling pathway, the MAPK signaling pathway, the Rap1 signaling pathway, the TGF- β signaling pathway, and the TNF signaling pathway. Some of these functions or signaling pathways have been approved

that played the critical role in several cancer types (37-41).

In addition to the dysregulation of lncRNAs, miRNAs, and mRNAs, tumorigenesis, tumor progression, and therapeutic response are also significantly influenced by the tumor microenvironment. We explored the relationship between DEMRNA, which significantly affects BC prognosis, and immune cell infiltration. The results showed that naïve B cells and T-cell CD4 memory activation were tumor suppressors, but macrophages (M0), resting mast

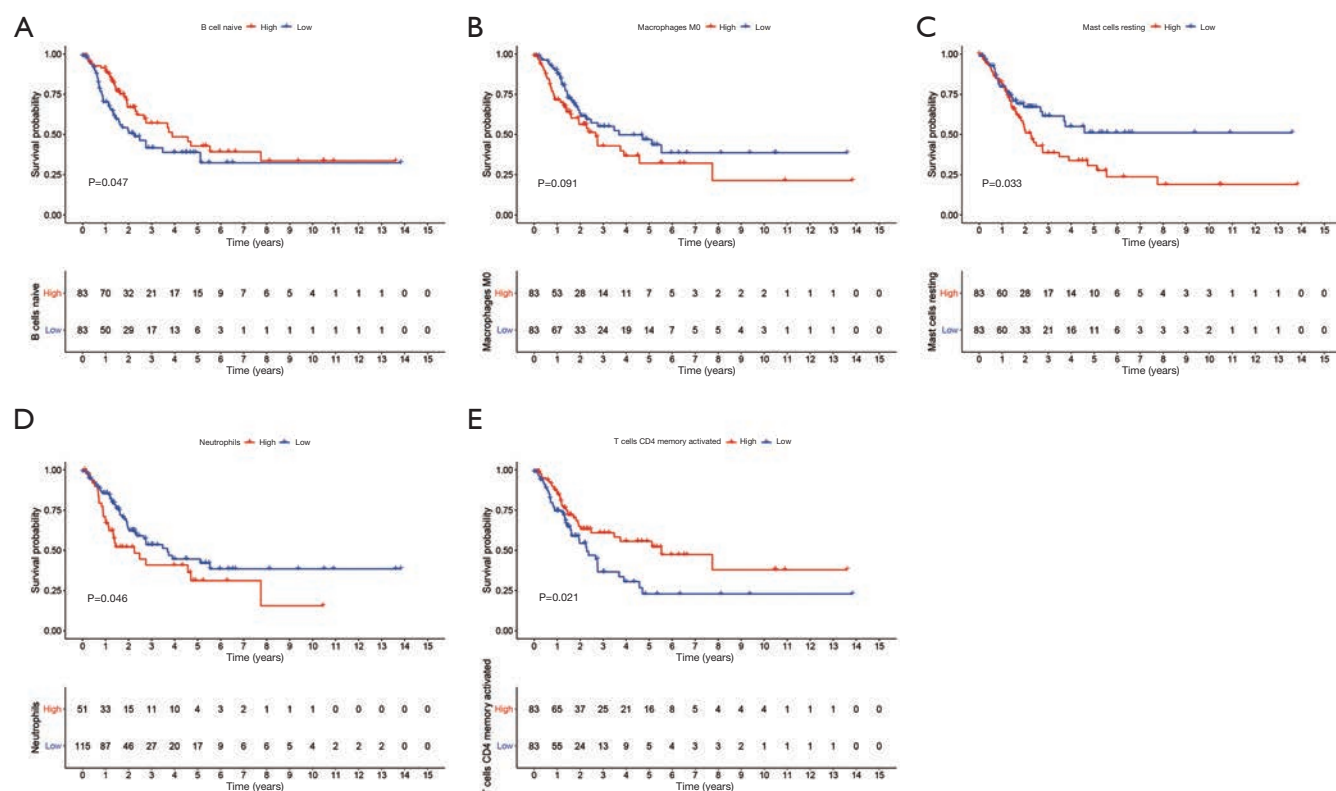


Figure 10 Immune cell types that significantly and marginally influence bladder cancer prognosis. (A) B cells naïve; (B) macrophages M0; (C) mast cells resting; (D) neutrophils; (E) T cells memory activated.

cells, and neutrophils as tumor promoters for BC. There are significant differences in immune cell infiltrates between normal and tumor samples. Of these, DE mRNAs influenced BC prognosis via the regulation immune cell infiltration in BC. At steady state, the immune system can recognize and kill specific molecules expressed on tumor cells membranes, these up-expressed or down-expressed heterogeneous molecules can activate and increase the immune cells infiltration in the tumor microenvironment (42). In our study, up-regulation of SPTBN2 in bladder cancer can increased the abundance of macrophages cells and lead to poor prognosis of BC patients. A down-regulation of SERPINE2, CACNA2D1, GULP1, LTBP1, and MYLK in bladder cancer can reduced the abundance of macrophages cells and lead to poor prognosis of BC patients, and reduced the abundance of T-cell CD4 memory activation while lead to better prognosis. Expression of mRNAs in bladder cancer was altered via the ceRNA mechanism, and then influenced

the immune cells infiltration in tumor microenvironment. The combined effect of these regulatory mechanisms leads to the dynamic development of bladder cancer tumors.

The limitation of our study is that absence of validation by experiments.

Conclusions

We constructed a lncRNA-miRNA-mRNA regulatory network by selecting DE lncRNAs, DE miRNAs, and mRNAs via comprehensive bioinformatics analysis. We found that CACNA2D1, GULP1, LTBP1, MYLK, SERPINE2, SPTBN2, and has-miR-590-3p could act as prognostic and diagnostic biomarkers for BC. LncRNA-HCG11 may influence BC via interacting with has-miR-590-3p and has-miR-376c-3p. Further studies are needed to determine the role of regulatory modules in the tumorigenesis, tumor progression, and therapeutic response of BC.

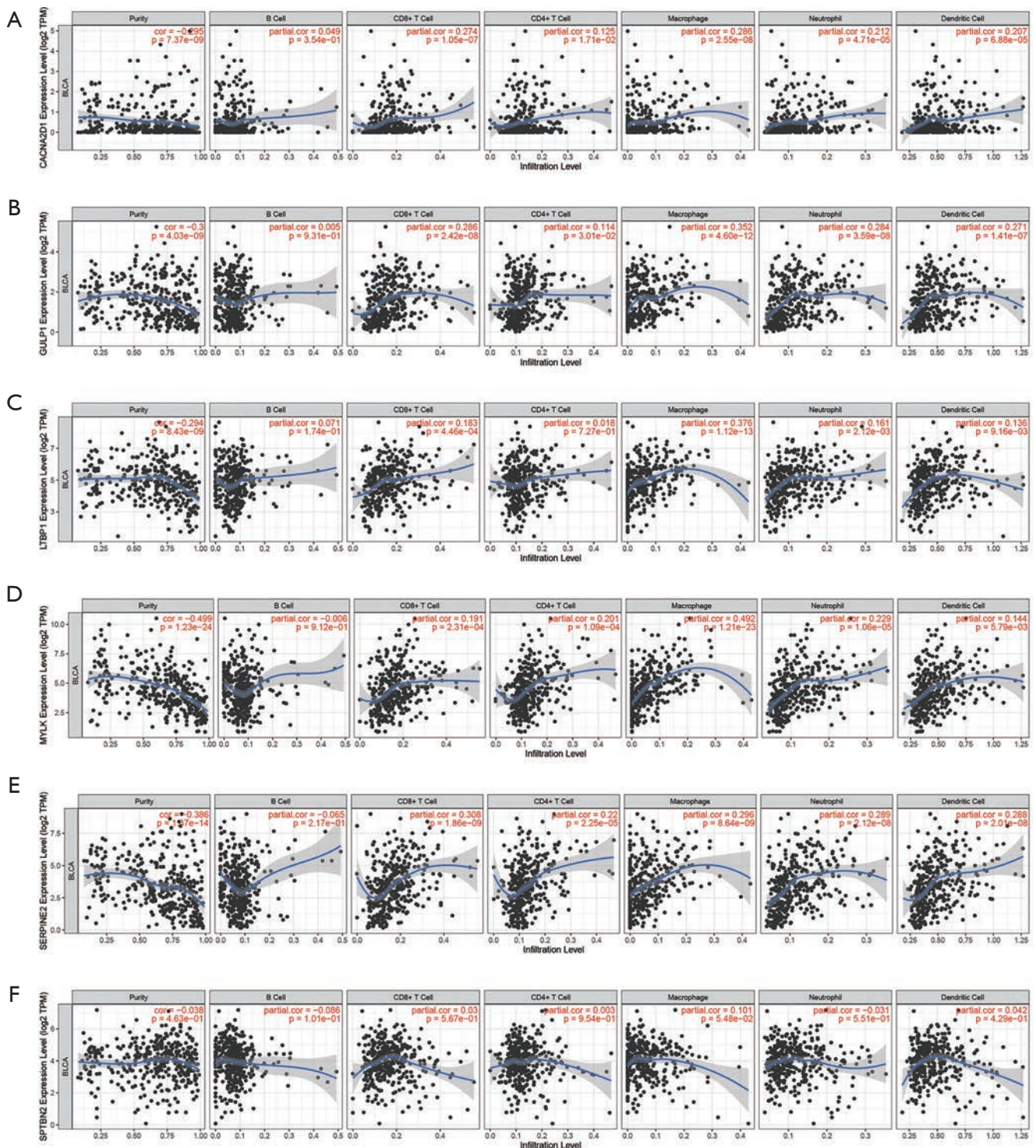


Figure 11 Relationship between messenger RNAs that significantly affect bladder cancer patients' prognosis and immune cell infiltration. (A) CACNA2D1; (B) GULP1; (C) LTBP1; (D) MYLK; (E) SERPINE2; (F) SPTBN2. CACNA2D1, Calcium Voltage-gated Channel Auxiliary Subunit Alpha2delta1; GULP1, domain containing engulfment adaptor1; LTBP1, latent transforming growth factor beta binding protein 1; MYLK, myosin light chain kinase; SERPINE2, serpin family E member 2; SPTBN2, spectrin beta non-erythrocytic 2.

Acknowledgments

Funding: The present study was funded by the National Natural Science Foundation (No. 81600541).

Footnote

Reporting Checklist: The authors have completed the MDAR reporting checklist. Available at <http://dx.doi.org/10.21037/tau-21-81>

Conflicts of Interest: All authors have completed the ICMJE uniform disclosure form (available at <http://dx.doi.org/10.21037/tau-21-81>). The authors have no conflicts of interest to declare.

Ethical Statement: The authors are accountable for all aspects of the work in ensuring that questions related to the accuracy or integrity of any part of the work are appropriately investigated and resolved. The study was conducted in accordance with the Declaration of Helsinki (as revised in 2013).

Open Access Statement: This is an Open Access article distributed in accordance with the Creative Commons Attribution-NonCommercial-NoDerivs 4.0 International License (CC BY-NC-ND 4.0), which permits the non-commercial replication and distribution of the article with the strict proviso that no changes or edits are made and the original work is properly cited (including links to both the formal publication through the relevant DOI and the license). See: <https://creativecommons.org/licenses/by-nc-nd/4.0/>.

References

- Humphrey PA, Moch H, Cubilla AL, et al. The 2016 WHO Classification of Tumours of the Urinary System and Male Genital Organs-Part B: Prostate and Bladder Tumours. *Eur Urol* 2016;70:106-19.
- Bresalier RS, Kopetz S, Brenner DE. Blood-based tests for colorectal cancer screening: do they threaten the survival of the FIT test? *Dig Dis Sci* 2015;60:664-71.
- Chamie K, Saigal CS, Lai J, et al. Quality of care in patients with bladder cancer: a case report? *Cancer* 2012;118:1412-21.
- Racioppi M, D'Agostino D, Totaro A, et al. Value of current chemotherapy and surgery in advanced and metastatic bladder cancer. *Urol Int* 2012;88:249-58.
- Glassman ML, de Groot N, Hochberg A. Relaxation of imprinting in carcinogenesis. *Cancer Genet Cytogenet* 1996;89:69-73.
- Khalil AM, Guttman M, Huarte M, et al. Many human large intergenic noncoding RNAs associate with chromatin-modifying complexes and affect gene expression. *Proc Natl Acad Sci U S A* 2009;106:11667-72.
- Guttman M, Amit I, Garber M, et al. Chromatin signature reveals over a thousand highly conserved large non-coding RNAs in mammals. *Nature* 2009;458:223-7.
- Bhan A, Mandal SS. LncRNA HOTAIR: A master regulator of chromatin dynamics and cancer. *Biochim Biophys Acta* 2015;1856:151-64.
- Sanfilippo PG, Hewitt AW. Translating the ENCyclopedia Of DNA Elements Project findings to the clinic: ENCODE's implications for eye disease. *Clin Exp Ophthalmol* 2014;42:78-83.
- Bhan A, Mandal SS. Long noncoding RNAs: emerging stars in gene regulation, epigenetics and human disease. *ChemMedChem* 2014;9:1932-56.
- Prensner JR, Iyer MK, Balbin OA, et al. Transcriptome sequencing across a prostate cancer cohort identifies PCAT-1, an unannotated lincRNA implicated in disease progression. *Nat Biotechnol* 2011;29:742-9.
- Walsh AL, Tuzova AV, Bolton EM, et al. Long noncoding RNAs and prostate carcinogenesis: the missing 'linc'? *Trends Mol Med* 2014;20:428-36.
- Askarian-Amiri ME, Crawford J, French JD, et al. SNORD-host RNA Zfas1 is a regulator of mammary development and a potential marker for breast cancer. *RNA* 2011;17:878-91.
- Weber DG, Johnen G, Casjens S, et al. Evaluation of long noncoding RNA MALAT1 as a candidate blood-based biomarker for the diagnosis of non-small cell lung cancer. *BMC Res Notes* 2013;6:518.
- Xue Y, Gu D, Ma G, et al. Genetic variants in lncRNA HOTAIR are associated with risk of colorectal cancer. *Mutagenesis* 2015;30:303-10.
- Ying L, Huang Y, Chen H, et al. Downregulated MEG3 activates autophagy and increases cell proliferation in bladder cancer. *Mol Biosyst* 2013;9:407-11.
- Zhang X, Gejman R, Mahta A, et al. Maternally expressed gene 3, an imprinted noncoding RNA gene, is associated with meningioma pathogenesis and progression. *Cancer Res* 2010;70:2350-8.
- Loewer S, Cabili MN, Guttman M, et al. Large intergenic non-coding RNA-RoR modulates reprogramming of human induced pluripotent stem cells. *Nat Genet*

- 2010;42:1113-7.
19. Ruff SM, Ayabe RI, Malekzadeh P, et al. MicroRNA-210 May Be a Preoperative Biomarker of Malignant Pheochromocytomas and Paragangliomas. *J Surg Res* 2019;243:1-7.
 20. Zhang H, Zhu M, Shan X, et al. A panel of seven-miRNA signature in plasma as potential biomarker for colorectal cancer diagnosis. *Gene* 2019;687:246-54.
 21. Calin GA, Dumitru CD, Shimizu M, et al. Frequent deletions and down-regulation of micro- RNA genes miR15 and miR16 at 13q14 in chronic lymphocytic leukemia. *Proc Natl Acad Sci U S A* 2002;99:15524-9.
 22. Lujambio A, Lowe SW. The microcosmos of cancer. *Nature* 2012;482:347-55.
 23. Si W, Shen J, Zheng H, et al. The role and mechanisms of action of microRNAs in cancer drug resistance. *Clin Epigenetics* 2019;11:25.
 24. Lyu L, Xiang W, Zhu JY, et al. Integrative analysis of the lncRNA-associated ceRNA network reveals lncRNAs as potential prognostic biomarkers in human muscle-invasive bladder cancer. *Cancer Manag Res* 2019;11:6061-77.
 25. Wang X, Ding Y, Wang J, et al. Identification of the Key Factors Related to Bladder Cancer by lncRNA-miRNA-mRNA Three-Layer Network. *Front Genet* 2020;10:1398.
 26. Fan Y, Shen B, Tan M, et al. Long non-coding RNA UCA1 increases chemoresistance of bladder cancer cells by regulating Wnt signaling. *FEBS J* 2014;281:1750-8.
 27. Shang C, Guo Y, Zhang H, et al. Long noncoding RNA HOTAIR is a prognostic biomarker and inhibits chemosensitivity to doxorubicin in bladder transitional cell carcinoma. *Cancer Chemother Pharmacol* 2016;77:507-13.
 28. Ariel I, Sughayer M, Fellig Y, et al. The imprinted H19 gene is a marker of early recurrence in human bladder carcinoma. *Mol Pathol* 2000;53:320-3.
 29. Pennisi E. Shining a light on the genome's 'dark matter'. *Science* 2010;330:1614.
 30. Hayashi M, Guida E, Inokawa Y, et al. GULP1 regulates the NRF2-KEAP1 signaling axis in urothelial carcinoma. *Sci Signal* 2020;13:eaba0443.
 31. Sui X, Geng JH, Li YH, et al. Calcium channel alpha2delta1 subunit (CACNA2D1) enhances radioresistance in cancer stem-like cells in non-small cell lung cancer cell lines. *Cancer Manag Res* 2018;10:5009-18.
 32. Cai R, Wang P, Zhao X, et al. LTBP1 promotes esophageal squamous cell carcinoma progression through epithelial-mesenchymal transition and cancer-associated fibroblasts transformation. *J Transl Med* 2020;18:139.
 33. Zhong Z, Huang M, Lv M, et al. Circular RNA MYLK as a competing endogenous RNA promotes bladder cancer progression through modulating VEGFA/VEGFR2 signaling pathway. *Cancer Lett* 2017;403:305-17.
 34. Liu J, Song S, Lin S, et al. Circ-SERPINE2 promotes the development of gastric carcinoma by sponging miR-375 and modulating YWHAZ. *Cell Prolif* 2019;52:e12648.
 35. Zhang J, Luo A, Huang F, et al. SERPINE2 promotes esophageal squamous cell carcinoma metastasis by activating BMP4. *Cancer Lett* 2020;469:390-8.
 36. Du B, Wang T, Yang X, et al. SOX9, miR-495, miR-590-3p, and miR-320d were identified as chemoradiotherapy-sensitive genes and miRNAs in colorectal cancer patients based on a microarray dataset. *Neoplasia* 2019;66:8-19.
 37. Anbalagan M, Rowan BG. Estrogen receptor alpha phosphorylation and its functional impact in human breast cancer. *Mol Cell Endocrinol* 2015;418:264-72.
 38. Balkwill F. TNF-alpha in promotion and progression of cancer. *Cancer Metastasis Rev* 2006;25:409-16.
 39. Colak S, Ten Dijke P. Targeting TGF-beta Signaling in Cancer. *Trends Cancer* 2017;3:56-71.
 40. Kontomanolis EN, Kalagasidou S, Pouliliou S, et al. The Notch Pathway in Breast Cancer Progression. *ScientificWorldJournal* 2018;2018:2415489.
 41. Lee S, Rauch J, Kolch W. Targeting MAPK Signaling in Cancer: Mechanisms of Drug Resistance and Sensitivity. *Int J Mol Sci* 2020;21:1102.
 42. Schneider AK, Chevalier MF, Derre L. The multifaceted immune regulation of bladder cancer. *Nat Rev Urol* 2019;16:613-30.

Cite this article as: Huang M, Long Y, Jin Y, Ya W, Meng D, Qin T, Su L, Zhou W, Wu J, Huang C, Huang Q. Comprehensive analysis of the lncRNA-miRNA-mRNA regulatory network for bladder cancer. *Transl Androl Urol* 2021;10(3):1286-1301. doi: 10.21037/tau-21-81