

# Erratum to clinical role of a new prognostic score using platelet-to-lymphocyte ratio in patients with malignant pleural mesothelioma undergoing extrapleural pneumonectomy

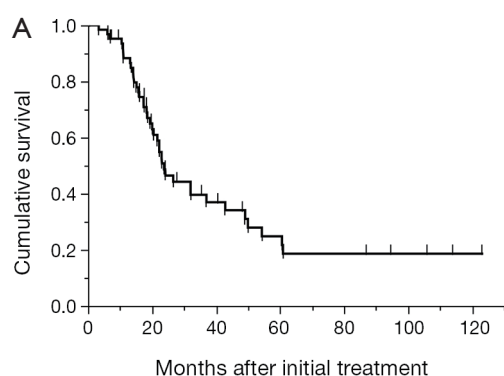
doi: 10.3978/j.issn.2072-1439.2016.01.51

View this article at: <http://dx.doi.org/10.3978/j.issn.2072-1439.2016.01.51>

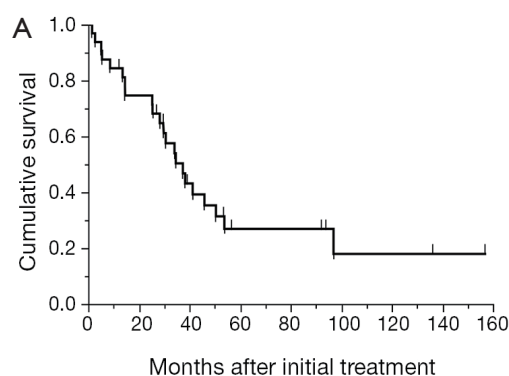
Erratum to: J Thorac Dis 2015;7:1898-1906.

In the article that appeared on Page 1898-1906 (1) of the November 2015 Issue of the *Journal of Thoracic Disease*, there were needless legends in *Figure 2A* and *4A*: PLR <215, PLR ≥215 and P=0.014 in *Figure 2A*; Risk 0, 1, 2 and P=0.0002 in *Figure 4A*. The legends mentioned above should be deleted.

Therefore, the correct figures are as follows:



**Figure 2** (A) Kaplan-Meier curve for overall survival of 65 patients in the training cohort. The median survival time was 23.7 months and the overall 2- and 5-year survival was 48.7% and 21.7%, respectively.



**Figure 4** (A) Kaplan-Meier curve for overall survival of 32 patients in the validation cohort. The median survival time was 37.4 months and the overall 2- and 5-year survival was 74.6% and 26.9%, respectively.

The publisher regrets these errors.

## References

1. Tagawa T, Anraku M, Morodomi Y, et al. Clinical role of a new prognostic score using platelet-to-lymphocyte ratio in patients with malignant pleural mesothelioma undergoing extrapleural pneumonectomy. J Thorac Dis 2015;7:1898-906.

**Cite this article as:** Erratum to clinical role of a new prognostic score using platelet-to-lymphocyte ratio in patients with malignant pleural mesothelioma undergoing extrapleural pneumonectomy. J Thorac Dis 2016;8(1):E161. doi: 10.3978/j.issn.2072-1439.2016.01.51