



USP11 promotes tumorigenesis and enhances MRI detection in breast cancer

Ling Yang, Mo Zhu, Xinxing Ma, Chunhong Hu

Department of Radiology, the First Affiliated Hospital of Soochow University, Suzhou University, Suzhou 215006, China

Contributions: (I) Conception and design: L Yang, C Hu; (II) Administrative support: C Hu; (III) Provision of study materials or patients: X Ma; (IV) Collection and assembly of data: X Ma; (V) Data analysis and interpretation: L Yang, M Zhu; (VI) Manuscript writing: All authors; (VII) Final approval of manuscript: All authors.

Correspondence to: Chunhong Hu. Department of Radiology, the First Affiliated Hospital of Soochow University, Suzhou University, No. 188 Shizi Street, Suzhou 215006, China. Email: Chunhonghu1981@sina.com.

Background: Ubiquitin-specific protease 11 (USP11) is a member of the deubiquitylating enzyme families. It usually works as an oncogene in some types of cancer such as colorectal and pancreatic cancers. But whether USP11 has a role in mediating tumorigenesis in breast cancer, the evidence is rare.

Methods: In order to evaluate the role of USP11 in breast cancer, qRT-PCR, western blot, cell growth assay, transwell assay and *in vivo* MRI assay was used. Co-immunoprecipitation assay and GST pull down assay revealed that the mechanism of USP11 contributes to the breast cancer progression *in vivo* and *in vitro*.

Results: The higher expression of USP11 was observed in the 120 breast cancer samples as well as the breast cancer cell lines compared with the normal breast tissues or normal breast mammary epithelial cell line. Furthermore, the higher expression of USP11 indicated a poorer overall 5-year survivals and worse prognosis. We identified USP11 played a critical role in the breast cancer cells proliferation, invasion and *in vivo* magnetic resonance imaging detection through counterbalanced Enhancer of zeste homologue 2 (EZH2) ubiquitination and stabilized it in MCF-7 cells and MDA-MB-231 cells.

Conclusions: Taken together, our study suggested that USP11 promoted breast cancer cell tumorigenesis and might work as a new biomarker and novel therapeutic target.

Keywords: Ubiquitin-specific protease 11 (USP11); Enhancer of zeste homologue 2 (EZH2); tumorigenesis; MRI detection; breast cancer

Submitted Jul 30, 2016. Accepted for publication Nov 16, 2016.

doi: 10.21037/tcr.2017.01.16

View this article at: <http://dx.doi.org/10.21037/tcr.2017.01.16>

Introduction

Breast cancer is one of the most common malignancy in females and the second leading cause of cancer-related mortality all over the world (1,2). In china, metastatic related deaths of breast cancer continuously rise at 3% per year (3). Although more and more biomarkers were reported to act as predictors of malignant status, the early and effective novel therapeutic targets still need further explore. Among numerous the targets, we focus our interest on the Enhancer of zeste homologue 2 (EZH2), which is the enzymatic subunit of the polycomb-repressive complex 2 (PRC2) (4), and mainly

work as histone H3 lysine 27 (H3K27) trimethyltransferase using the SET domain (5). More and more groups have reported that EZH2 was aberrantly overexpressed in various types of cancers, such as breast, colon, prostate and liver cancers (6), and the high expression of EZH2 was associated with cancer cell proliferation, migration, and invasion abilities. Especially in breast cancer (7-9), EZH2 was correlated with histological grade, estrogen receptor (ER), as well as progesterone receptor (PR) expression, and might be an independent prognostic factor for OS, DFS and MFS (10,11). But the questions which still disturb us are why EZH2 is highly expressed and the regulation of EZH2 is

still uncertain. As we known, the ubiquitination of proteins was an essential step for degradation and was involved in the modification of the target proteins. To the contrary, the antagonizing effect of ubiquitylation was induced by deubiquitylating enzymes (DUBs).

USP11 (ubiquitin-specific protease 11), was a member of the deubiquitylating enzyme families. USP11 was reported to stabilize and modulate the HPV-16E7 (12). Similarly, BRCA2 could be deubiquitinated by USP11 (13) and therefore exhibits its preserving function of DNA damage. The type I TGF β receptor (ALK5) could also be deubiquitinated by USP11, which resulting in enhanced TGF β -induced gene transcription (14). However, knowledges about the biological roles of USP11 in breast cancer progression are still lacking. By far, there was only one paper about that low USP-11 expression was correlated with better survival outcomes (15).

In this study, we identified EZH2 was a substrate for USP11, and the function of USP11 was to promote tumorigenesis, metastasis and enhancing MRI detection in breast cancer. On the whole, we were trying to reveal USP11 worked as a new biomarker and therapeutic target in triggering breast cancer.

Methods

Tumor specimens

Breast cancer tumor specimens and their adjacent normal tissues were received from 120 patients who were diagnosed as breast cancer and underwent breast surgery in our hospital from January 2007 to December 2013. The tissues were obtained after surgery and stored at -80°C immediately until used for mRNA isolation. The tumor samples were classified according to the American Society of Clinical Oncology (ASCO). Patients subjected to preoperative chemotherapy before surgery were excluded. Written consent was obtained from all participants prior to the study. The ethical approval was given by the hospital ethics committee and the ethics approval ID was Suzhou University-Ethics-D-20150831. The survival times were calculated from operation to recurrence or metastasis related death.

Cell lines

Human breast cancer cell lines MCF-7 cells (luminal), MDA-MB-231 cells (triple-negative) and the normal

human mammary epithelial cells (MCF-10A) were purchased from the American Type Culture Collection (Manassas, VA, USA). All the above cells were cultured in DMEM medium or 1640 medium or the MEGM Bullet Kit (HyClone) containing 10% fetal bovine serum (GIBCO, NY, USA) and then supplemented with antibiotics (100 U/mL penicillin and 100 g/mL streptomycin; Sigma-Aldrich, USA). Cells were cultured in a humidified 5% CO_2 incubator at 37°C .

Reagents and antibodies

Lipofectamine 2000 reagent and Lipofectamine RNAiMAX (Invitrogen) were used for plasmids or siRNAs transfection. Cells were transfected at 70% confluent and were routinely passaged at 90–95% confluent, according to manufacturer's instructions. Matrigel was from BD Biosciences (San Diego, CA, USA). Non-targeting siRNA was used as a negative control (NC). Two different small interfering RNAs (siRNAs) targeting USP11 (siUSP11) or EZH2 (siEZH2) were synthesized respectively (Genechem, Shanghai, China). Antibodies used were as follows: anti-USP11 antibody (Cell Signaling Technology, Danvers, MA, USA), anti-EZH2 antibody (BD Biosciences, Bedford, MA, USA) and anti- β -actin (Sigma-Aldrich). The secondary antibody was purchased from Santa Cruz (Santa Cruz, CA, USA).

RNA isolation and quantitative real-time PCR (qRT-PCR)

Total RNA of cell lysates was isolated using Trizol solution (Invitrogen Life Technologies, Carlsbad, CA, USA), according to the manufacture's introduction. The quality and concentration of the RNA was measured with a RNA Pico chip. Reverse transcription was performed using 1 μg of total RNA (Invitrogen Life Technologies), Oligo (deoxythymidine)₂₀ was used as primers.

qRT-PCR was performed on an ABI 7900 Fast System Real-Time detection system (Applied Biosystems, Foster City, CA, USA) using SYBR (Roche). GAPDH mRNA was used as an internal normalization control. The amplification protocol was: denaturation at 95°C for 5 min, followed by 40 cycles of denaturation at 95°C for 10 sec, annealing and extension at 60°C for 30 sec. All the experiments were performed in three times. Specific primers for the USP11 gene: forward primer CCGTGACTACAACAACCTCCT; reverse primer TCGTCATCTTCTTTCTCATCCC.

Co-immunoprecipitation assay

MCF-cells or MDA-MB-231 cells were lysed with cold lysis buffer (50 mM Tris-Cl, 0.5% NP-40, 150 mM NaCl, 1 mM EDTA, 0.5% sodium deoxycholate, pH 7.4 and protease inhibitor cocktail) on a rotator at 4 °C for 1 hour. The supernatants of the whole cell lysates were incubated with appropriate primary antibodies such as USP11 or EZH2 or normal rabbit/mouse immunoglobulin G (IgG) on a rotator at 4 °C overnight, and then the immune complexes were added with protein A/G Sepharose CL-4B beads for 2 h at 4 °C. After washed 5 times with lysis buffer, the immune complexes with beads were subjected to SDS-PAGE, followed by western blot analysis.

GST pull down assay

GST-USP11 fusion construct was expressed in BL21 *Escherichia coli* cells. The *in vitro* transcription and translation of EZH2 was done using rabbit reticulocyte lysate (TNT systems, Promega) according to the manufacturer's instruction. GST pull-down was performed using 5 µg of GST-USP11 with 8 µL of the transcribed/translated EZH2 and 30 µL of glutathione-Sepharose beads.

Western blot analysis

Protein extracts were lysed in SDS lysis buffer (50 mM Tris/HCl pH 8.0, 150 mM NaCl, 1 mM EDTA, 0.5% SDS), followed by centrifugation, the supernatants were collected. Equal amounts of protein (30 µg) in each group were resolved on 10% SDS-polyacrylamide gel electrophoresis. Separated proteins were transferred to polyvinylidene difluoride membranes followed by blocked with 5% non-fat milk and probed with antibodies against EZH2 (1:1,000), USP11 (1:500) or β-actin (1:2,000). Finally, the blots were incubated with peroxidase-conjugated secondary antibody against mouse or against rabbit (1:3,000). The immunoblots were visualized by the enhanced chemiluminescence assay (WBKLS0500, Millipore) and the intensity was determined using the Image-Pro Plus 6.0 software (Japan). β-actin was used as an internal normalization control.

Cell growth analysis

The breast cancer cell line MCF-7 was plated into 6-well culture plates (5×10^4 cells/well), and incubated in a humidified atmosphere of 5% CO₂ at 37 °C. Cell growth rate was

monitored at different time intervals by counting cell numbers. Independent experiments were carried out in triplicate.

Transwell invasion assay

The invasive ability of breast cancer cells was measured using Transwell assay (Chemicon Incorporation), and matrigel were from BD Biosciences. After transfected with the relative siRNA, 2×10^5 MDA-MB-231 cells in 100 µL serum free media were added onto the upper chamber. The lower compartment was incubated with RPMI 1640 containing 10% fetal bovine serum. MDA-MB-231 cells were incubated for 24 hours at 37 °C. The cells invaded into the lower surface were fixed with 2% paraformaldehyde, stained with 0.5% crystal violet and counted for five different fields under a microscope.

MRI detection

For *in vivo* MRI, MCF-7 siUSP7 cells, SCR cells, Vector cells and USP7 cells were used, and the details of the protocol were mentioned early. Mice were sacrificed and blood T1's determined from samples were taken from the inferior vena cava (16).

Statistical analyses

All statistical analyses were done using SPSS 19.0 (SPSS Inc., Chicago, IL, USA). P value <0.05 was considered as statistically significant. All results were expressed as mean ± SD, and were performed for at least three times independently. Student's *t*-test was used to correlate two independent groups comparison. Kaplan-Meier survival curves were plotted to analyze the breast cancer morbidity. Univariate Cox regression analysis was used to assess the marginal effect. The differences between groups were assessed using log-rank analysis.

Results

The higher expression of USP11 indicated a poorer prognosis in breast cancer

In order to understand the role of USP11 in breast cancer, qRT-PCR was used to examine the USP11 mRNA expression level, as showed in *Figure 1A*, there was obviously increase in the USP11 expression in 120 breast cancer samples compared with normal breast

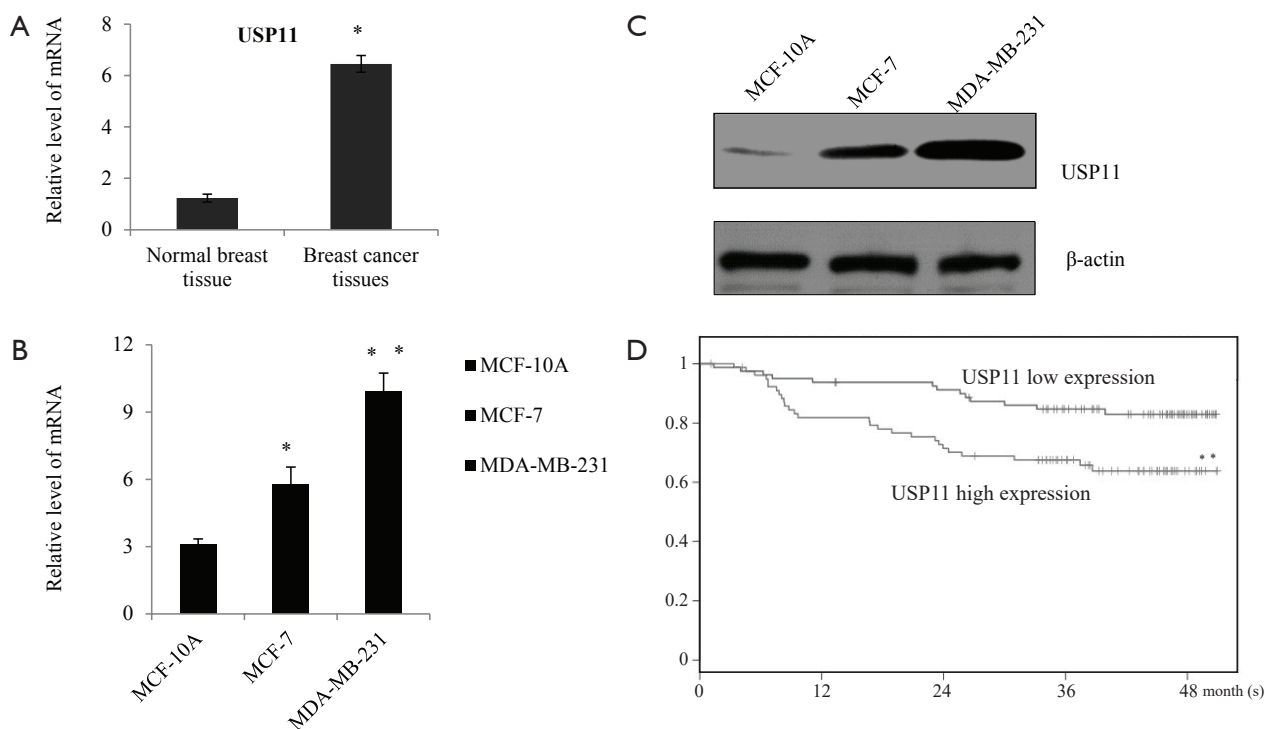


Figure 1 The higher expression of USP11 indicated a poorer prognosis in breast cancer. (A) The expression of USP11 was determined by quantitative real-time PCR in 120 breast cancer samples and adjacent normal breast tissue (NT). Error bars mean standard error of the mean, student's *t*-test. *, $P < 0.05$; (B) the mRNA level of USP11 in MCF-10A, MCF-7 and MDA-MB-231 was determined using quantitative real-time PCR, of three independent experiments. Error bars represent standard error of the mean. *, $P < 0.05$; **, $P < 0.01$; (C) the protein level of USP11 in MCF-10A, MCF-7 and MDA-MB-231 was determined by western blotting, β -actin was used as a normalization control; (D) Kaplan-Meier curves were used to analyze the 5-year overall survival rates, according to the USP11 level. Cox log-rank test was used for comparison, **, $P < 0.01$. USP11, ubiquitin-specific protease 11.

tissues, ($P < 0.05$). GAPDH was used as an internal control. The similar tendency was also observed in the breast cancer cell lines MCF-7 and MDA-MB-231 compared with the normal breast epithelial cell line MCF-10A, from both mRNA (Figure 1B) and protein level (Figure 1C). Depending on the median USP11 mRNA expression level, the breast cancer patients were divided in to two groups, and the higher expression of USP11 was with a poorer prognosis for overall 5-year survival times ($P < 0.01$) (Figure 1D). As summarized in Table 1, the higher USP11 expression was significantly associated with higher histological grade, ER negative, higher clinical stage and Lymph node metastasis breast cancer, all of which indicated worse prognosis.

USP11 promoted breast cancer cells proliferation *in vitro*

To explore the function of USP11 in breast cancer cells,

firstly, MCF-7 cells as well as MDA-MB-231 cells were infected with control siRNA, siUSP11#1, or siUSP11#2, the knockdown efficiency was detected. Cells transfected with siUSP11 were significantly reduced in the USP11 mRNA level compared with the control groups (Figure 2A). Concomitantly, in the USP11 protein level, the siUSP11 groups were also markedly lower than the control groups as detected by western blot analysis (Figure 2B). siUSP11#2 was chosen for the further experiments because of better efficiency. USP11 over expression efficiency was also detected in MCF-7 cells or MDA-MB-231 cells transfected with vector or USP11 construct (Figure 2C). Cell growth assays was performed in MCF-7 cells transfected with vector, USP11 gain-of-function, USP11 loss-of-function. As showed in Figure 2D, MCF-7 cells with USP11 over expression showed an obviously growth promotion, while in the USP11 knockdown group, there was an evident growth inhibition,

Table 1 Clinicopathologic variables in 120 breast cancer patients

Variables	No. (n=120)	USP11 expression		P value
		Low [45]	High [75]	
Clinical stage				<0.001
I-II	66	35	31	
III-IV	54	10	44	
Age (years)				0.370
<40	57	19	38	
≥40	63	26	37	
Histological grade				0.002
G1	58	30	28	
G2-G3	62	15	47	
Estrogen receptor				<0.001
Positive	52	29	23	
Negative	68	16	52	
Lymph node metastasis				<0.001
No	70	39	31	
Yes	50	6	44	
HER2				0.813
Positive	63	23	40	
Negative	57	22	35	

USP11, ubiquitin-specific protease 11.

compared with the untreated group. Cell growth assays using MDA-MB-231 cell lines further proved the function of USP11 in promoting proliferation *in vitro* (Figure 2E).

USP11 promoted breast cancer cells invasion and enhanced MRI detection

In order to explore the role of USP11 in the migration and invasion, transwell assay was conducted, as an approach to study invasion. MDA-MB-231 cells were pretreated with control siRNA or siUSP11#2, or vector, or USP11 plasmid. Cells transmigrated to the lower chamber were counted, as showed, after infection with siUSP11 #2, the migrated cells were significantly decreased. While after infection with USP11, the migrated cells were obviously increased. Altogether, the above experiments indicated USP11 caused a notable increase in migrating cells (Figure 3A,B). In the vivo MRI assay, as measured, in the USP11 knockdown group, the permeability-surface area product was hardly to detected (Figure 3C). Oppositely, USP11 over expression resulted in the noninvasive MCF-7 to a more detectable phenotype, as the permeability-surface area product was

significantly higher compared with the vector (Figure 3D).

EZH2 was identified as a USP11-interacting protein

Since USP11 was a deubiquitylating enzyme, we tried to investigate the potential substrates of USP11 in breast cancer. Co-immunoprecipitation (co-IP) assay was performed to identify the USP11-interacting proteins in MCF-7 cells. Several key regulators that have been reported to work as breast cancer driver were chosen for study such as transcription factors and histone modification enzymes. As showed in Figure 4A, H3 lysine 27 (H3K27) trimethyltransferase EZH2 could interact with USP11 *in vivo*. Since firstly immune precipitated with antibodies against USP11, and then followed by western blotting against EZH2 antibody, there was obviously band compared with the normal IgG group. Reciprocal immunoprecipitation with EZH2 antibody and immunoblotting with antibody against USP11 also indicated the fact. The interaction was also observed in MDA-MB-231 cells with endogenous proteins (Figure 4B). The above data indicated that USP11 interacted with EZH2

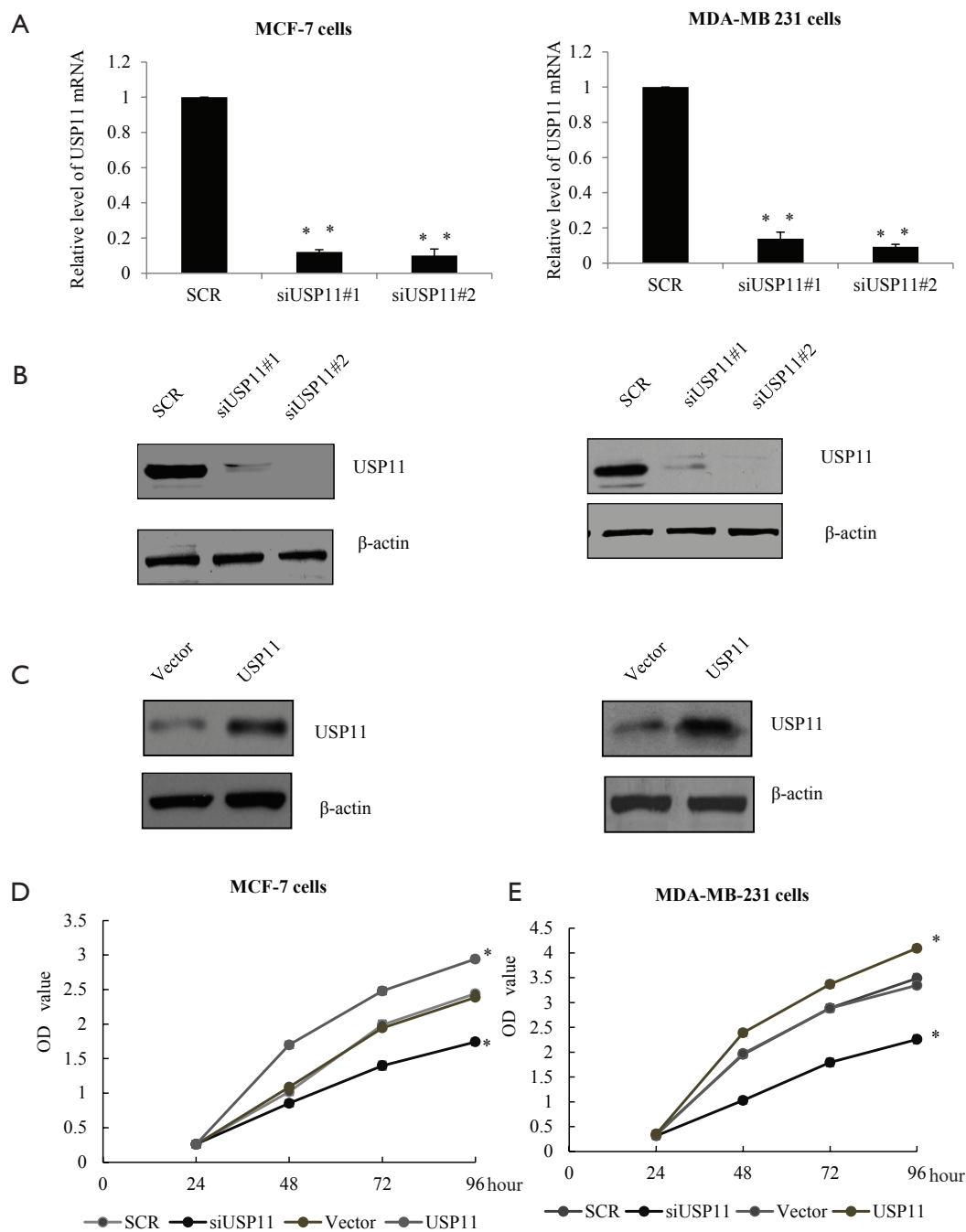


Figure 2 USP11 promoted breast cancer cells tumorigenesis *in vitro*. (A) The knockdown efficiencies of USP11 were confirmed by quantitative real-time PCR in MCF-7 cells or MDA-MB-231 cells transfected with NC, siUSP11#1, or siUSP11#2, and GAPDH was used as a normalization control. **, $P < 0.01$; (B) the knockdown efficiencies of USP11 in MCF-7 cells or MDA-MB-231 cells were confirmed by western blotting, and β -actin was used as a normalization control; (C) the over expression efficiencies of USP11 in MCF-7 cells or MDA-MB-231 cells were detected by western blotting in cells transfected with vector or USP11, β -actin was used as a normalization control; (D) MCF-7 cells transfected with NC, siUSP11, vector, or USP11 were subjected to cell growth curve analysis. Equal numbers of cells were seeded into replicate plates. *, $P < 0.05$; (E) cell growth curve analysis was performed in MDA-MB-231 cells. USP11, ubiquitin-specific protease 11. *, $P < 0.05$.

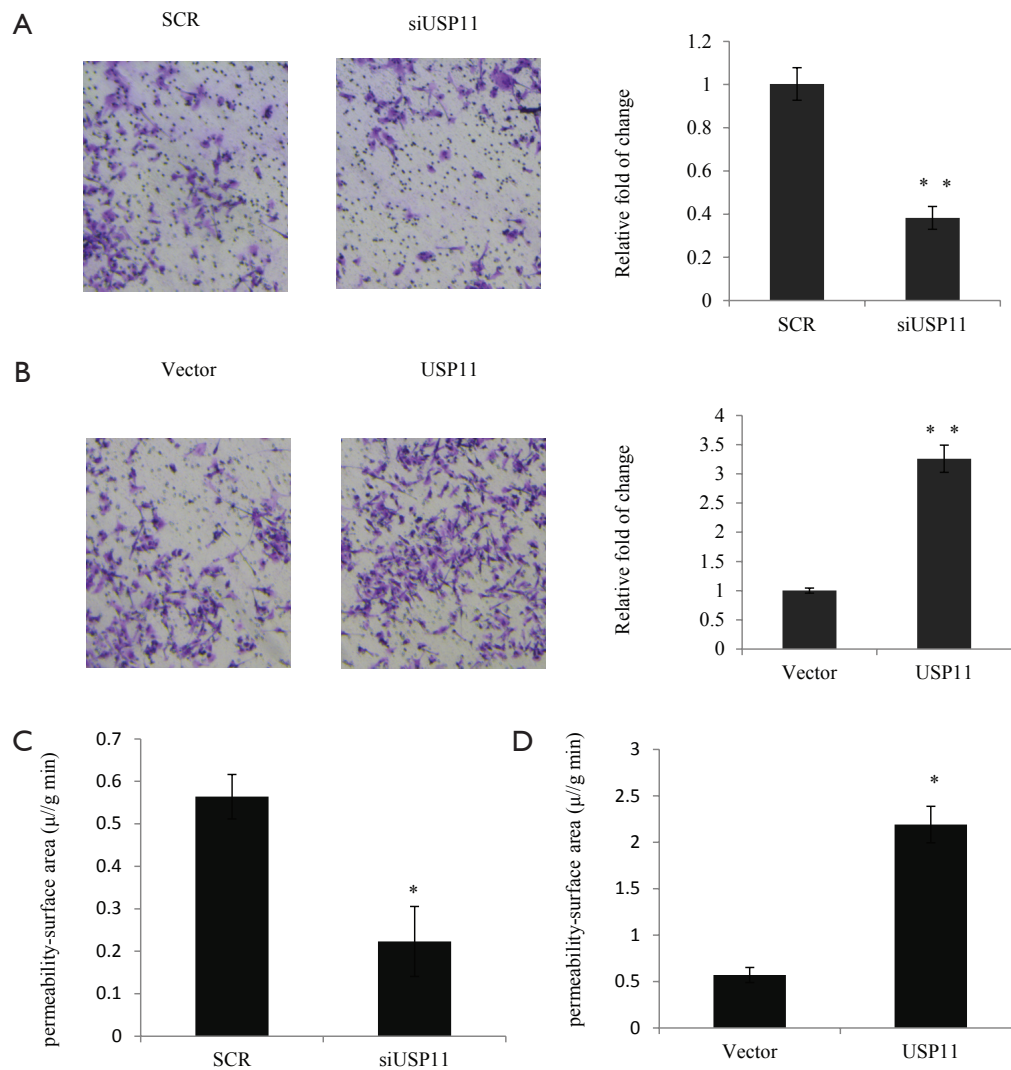


Figure 3 USP11 promoted breast cancer cells invasion and enhanced MRI detection. (A) MDA-MB-231 cells were transfected with NC or siUSP11, the invaded cells were stained and counted. Representative photos were shown in each group. Data was represented as fold of change compared with the vector. Error bars mean the mean \pm SD for triplicate measurements. The magnification was 40; (B) MDA-MB-231 cells were transfected with vector or USP11, the invaded cells were stained and counted. The magnification was 40; (C) comparison MRI maps of the permeability-surface area product were drawn from MCF-7 NC or MCF-7 siUSP11 tumor-bearing mice. Statistically analyzed were represented; (D) comparison MRI maps of the permeability-surface area product were drawn from MCF-7 vector or MCF-7 USP11 over expression tumor-bearing mice. Statistically analyzed were represented. *, $P < 0.05$; **, $P < 0.01$. USP11, ubiquitin-specific protease 11.

in vivo. Further, GST pull-down assay was performed to investigate whether USP11 could interact with EZH2 directly. Glutathione S-transferase fusion protein USP11 was immobilized on glutathione Sepharose 4B beads, and incubated with translated FLAG-tagged EZH2, with GST protein used as a NC. As showed in *Figure 4C*, EZH2 was found to bind with USP11 directly *in vitro*. Collectively, the above experiments indicated that USP11 was physically

associated with EZH2 *in vivo* and *in vitro*.

USP11 inhibited EZH2 ubiquitination and stabilized EZH2 in vivo

Since USP11 was reported to deubiquitinate and stabilize BRCA2 and ALK5, it was reasonable to make the hypothesis that USP11 might also regulate EZH2 via its deubiquitinase

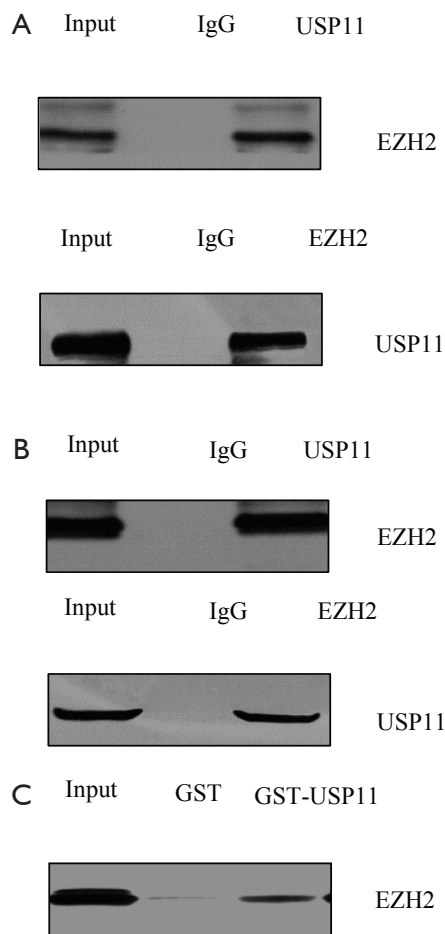


Figure 4 EZH2 was identified as a USP11-interacting protein. (A) Co-immunoprecipitation (Co-IP) assay was used to detect the association between EZH2 and USP11. Whole cell lysates of MCF-7 were immunoprecipitated with antibody against USP11, with normal IgG as the negative control, whole cell lysates as positive control. The immunocomplexes were then immunoblotted with EZH2, then inversely; (B) whole MDA-MB-231 cell lysates were used to detect the association between EZH2 and USP11; (C) GST pull-down assay was used to detect the association between EZH2 and USP11. The GST-fused USP11 and *in vitro* transcribed/translated EZH2 was incubated, and the immunocomplexes were then immunoblotted with EZH2. USP11, ubiquitin-specific protease 11.

activity. To explore this, MCF-7 cells or MDA-MB-231 cells were infected with control siRNA, siUSP11#2, vector, or USP11 separately, and the expression of EZH2 was detected. As expected, although the mRNA expression was not changed (Figure 5A), in the USP11 knockdown group, the protein level of EZH2 decreased notably, while in the

USP11 over expression group, EZH2 expression increased remarkably (Figure 5B). Those indicated USP11 may influence EZH2 through post transcription modification. To determine whether USP11 could influence EZH2 expression through protein ubiquitination pathway, MG132, a proteasome-specific inhibitor, was used. In the USP11 knockdown MCF-7 or MDA-MB-231 cells, MG132 was successful to rescue EZH2 protein from degradation (Figure 5C,D). Based on the above experiments, we made the conclusion that USP11 stabilized the expression of EZH2 possibly based on its deubiquitinating activity.

Discussion

Several groups have reported that USP11 could stabilize the target genes by deubiquitinating the polyubiquitinated substrates, for example, USP11 regulated p53 stability by deubiquitinating p53 (17). Similarly, USP11 negatively regulated NF-kappaB activation by catalyzing deubiquitination of IkappaBalpha (18). So we made the hypothesis that more and more substrates regulated by USP11 will be identified in the future.

Although lower expression of USP11 was correlated with better survival outcomes in breast cancer (15), the mechanism was still unclear. More evidence needs to be excavated to understand the role of USP11 in breast cancer. In the present study, we first investigated the expression of USP11 in 120 cases of breast cancer and the adjacent normal tissues, our data demonstrated that USP11 mRNA expression was higher in the cancer samples compared with the normal tissues. We defined the function of USP11 in the breast cancer cell proliferation and invasion. Using MCF-7 and MDA-MB-231 cell lines, the ectopic expression of USP11 could increase the proliferation ability of MCF-7 cells, the invasion ability of MDA-MB-231 cells and enhance the MRI detection, while the knockdown of USP11 opposite the tendency. One of the mechanisms was because USP11 could interact with EZH2 *in vivo* and *in vitro* directly. Another evidence to support our argument was that over expression of USP11 could result in the enrichment in the protein level of EZH2 but not the mRNA level, which further indicated that regulation of EZH2 by USP11 was due to post-transcriptional modification, possibly based on its deubiquitinating activity. As it has been well studied that EZH2 worked as a breast cancer tumorigenesis driver (19-21), it was reasonable that USP11 might play an important role in breast cancer progression and work as a new therapeutic target in triggering breast cancer by stabilization of EZH2.

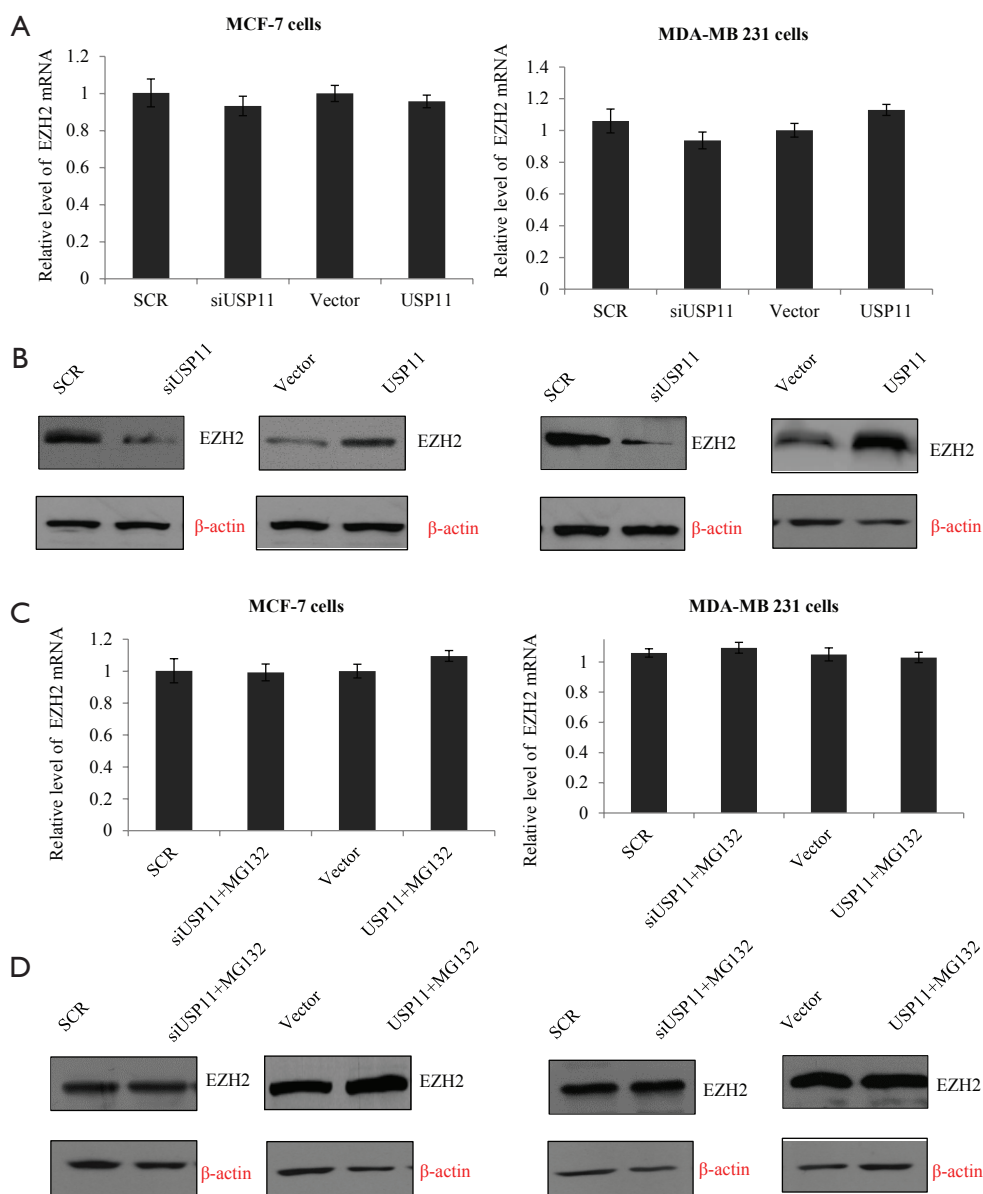


Figure 5 USP11 inhibited EZH2 ubiquitination and stabilized EZH2 *in vivo*. (A) MCF-7 cells or MDA-MB-231 cells were transfected with control siRNA, siUSP11#2, vector, or USP11, and the mRNA level of EZH2 was detected. Experiments were repeated three times, Error bars mean average \pm SD. No significant difference; (B) MCF-7 cells or MDA-MB-231 cells were transfected with control siRNA, siUSP11#2, vector, or USP11, and the protein level of EZH2 was detected. β -actin was used as a normalization control. Data not shown; (C) MCF-7 cells or MDA-MB-231 cells were transfected with control siRNA, siUSP11#2, vector, or USP11, after MG132 treatment, cells were harvested and the mRNA level of EZH2 was detected; (D) MCF-7 cells or MDA-MB-231 cells were transfected with control siRNA, siUSP11#2, vector, or USP11, after MG132 treatment, cells were harvested and the protein level of EZH2 was detected using western blot. β -actin was used as a normalization control. Data not shown. USP11, ubiquitin-specific protease 11.

Acknowledgments

Funding: This work was supported by a Grant for the Science and Technology Project of Suzhou (SYS201614).

Footnote

Conflicts of Interest: All authors have completed the ICMJE uniform disclosure form (available at <http://dx.doi.org>).

[org/10.21037/tcr.2017.01.16](https://doi.org/10.21037/tcr.2017.01.16)). The authors have no conflicts of interest to declare.

Ethical Statement: The authors are accountable for all aspects of the work in ensuring that questions related to the accuracy or integrity of any part of the work are appropriately investigated and resolved. The study was conducted in accordance with the Declaration of Helsinki (as revised in 2013). Written consent was obtained from all participants prior to the study. The ethical approval was given by the hospital ethics committee and the ethics approval ID was Suzhou University-Ethics-D-20150831.

Open Access Statement: This is an Open Access article distributed in accordance with the Creative Commons Attribution-NonCommercial-NoDerivs 4.0 International License (CC BY-NC-ND 4.0), which permits the non-commercial replication and distribution of the article with the strict proviso that no changes or edits are made and the original work is properly cited (including links to both the formal publication through the relevant DOI and the license). See: <https://creativecommons.org/licenses/by-nc-nd/4.0/>.

References

- Jemal A, Bray F, Center MM, et al. Global cancer statistics. *CA Cancer J Clin* 2011;61:69-90.
- Bombonati A, Sgroi DC. The molecular pathology of breast cancer progression. *J Pathol* 2011;223:307-17.
- Hong W, Dong E. The past, present and future of breast cancer research in China. *Cancer Lett* 2014;351:1-5.
- Cao R, Wang L, Wang H, et al. Role of histone H3 lysine 27 methylation in Polycomb-group silencing. *Science* 2002;298:1039-43.
- Asangani IA, Ateeq B, Cao Q, et al. Characterization of the EZH2-MMSET histone methyltransferase regulatory axis in cancer. *Mol Cell* 2013;49:80-93.
- Xu K, Wu ZJ, Groner AC, et al. EZH2 oncogenic activity in castration-resistant prostate cancer cells is Polycomb-independent. *Science* 2012;338:1465-9.
- Bachmann IM, Halvorsen OJ, Collett K, et al. EZH2 expression is associated with high proliferation rate and aggressive tumor subgroups in cutaneous melanoma and cancers of the endometrium, prostate, and breast. *J Clin Oncol* 2006;24:268-73.
- Chang CJ, Yang JY, Xia W, et al. EZH2 promotes expansion of breast tumor initiating cells through activation of RAF1- β -catenin signaling. *Cancer Cell* 2011;19:86-100.
- Yu H, Simons DL, Segall I, et al. PRC2/EED-EZH2 complex is up-regulated in breast cancer lymph node metastasis compared to primary tumor and correlates with tumor proliferation in situ. *PLoS One* 2012;7:e51239.
- Chang CJ, Hung MC. The role of EZH2 in tumour progression. *Br J Cancer* 2012;106:243-7.
- Chen S, Huang L, Sun K, et al. Enhancer of zeste homolog 2 as an independent prognostic marker for cancer: a meta-analysis. *PLoS One* 2015;10:e0125480.
- Lin CH, Chang HS, Yu WC. USP11 stabilizes HPV-16E7 and further modulates the E7 biological activity. *J Biol Chem* 2008;283:15681-8.
- Schoenfeld AR, Apgar S, Dolios G, et al. BRCA2 is ubiquitinated in vivo and interacts with USP11, a deubiquitinating enzyme that exhibits prosurvival function in the cellular response to DNA damage. *Mol Cell Biol* 2004;24:7444-55.
- Al-Salihi MA, Herhaus L, Macartney T, et al. USP11 augments TGF β signalling by deubiquitylating ALK5. *Open Biol* 2012;2:120063.
- Bayraktar S, Gutierrez Barrera AM, Liu D, et al. USP-11 as a predictive and prognostic factor following neoadjuvant therapy in women with breast cancer. *Cancer J* 2013;19:10-7.
- Pathak AP, McNutt S, Shah T, et al. In vivo "MRI phenotyping" reveals changes in extracellular matrix transport and vascularization that mediate VEGF-driven increase in breast cancer metastasis. *PLoS One* 2013;8:e63146.
- Ke JY, Dai CJ, Wu WL, et al. USP11 regulates p53 stability by deubiquitinating p53. *J Zhejiang Univ Sci B* 2014;15:1032-8.
- Sun W, Tan X, Shi Y, et al. USP11 negatively regulates TNF α -induced NF- κ B activation by targeting on I κ B α . *Cell Signal* 2010;22:386-94.
- Gonzalez ME, Moore HM, Li X, et al. EZH2 expands breast stem cells through activation of NOTCH1 signaling. *Proc Natl Acad Sci U S A* 2014;111:3098-103.
- Mu Z, Li H, Fernandez SV, et al. EZH2 knockdown suppresses the growth and invasion of human inflammatory breast cancer cells. *J Exp Clin Cancer Res* 2013;32:70.
- Moore HM, Gonzalez ME, Toy KA, et al. EZH2 inhibition decreases p38 signaling and suppresses breast cancer motility and metastasis. *Breast Cancer Res Treat* 2013;138:741-52.

Cite this article as: Yang L, Zhu M, Ma X, Hu C. USP11 promotes tumorigenesis and enhances MRI detection in breast cancer. *Transl Cancer Res* 2017;6(1):218-227. doi: 10.21037/tcr.2017.01.16