



Characterization of diagnostic and prognostic significance of cell cycle-linked genes in hepatocellular carcinoma

Jukun Wang, Yu Li, Chao Zhang, Xin Chen, Linzhong Zhu, Tao Luo

Department of General Surgery, Xuanwu Hospital of Capital Medical University, Beijing, China

Contributions: (I) Conception and design: J Wang, Y Li; (II) Administrative support: T Luo, L Zhu; (III) Provision of study materials: J Wang, Y Li, C Zhang; (IV) Collection and assembly of data: J Wang, X Chen; (V) Data analysis and interpretation: J Wang, Y Li, L Zhu; (VI) Manuscript writing: All authors; (VII) Final approval of manuscript: All authors.

Correspondence to: Tao Luo. General Surgery, Xuanwu Hospital, Capital Medical University, No. 45, Changchun Street, Xicheng District, Beijing, China. Email: TaoLuo35@126.com.

Background: The high degree of heterogeneity of hepatocellular carcinoma (HCC) imposes a significant challenge to predict the prognosis. Currently, increasing evidence has indicated that cell cycle-linked genes are strongly linked to occurrence and progress of HCC. Herein, we purposed to create a prediction model on the basis of cell cycle-linked genes.

Methods: The transcriptome along with clinicopathological data abstracted from The Cancer Genome Atlas (TCGA) were used as a training cohort. Lasso regression analysis was employed to create a prediction model in TCGA cohort. The data of samples obtained from the International Cancer Genome Consortium (ICGC) data resource were applied in the verification of the model. A series of bioinformatics analyzed the relationship of the risk signature with overall survival (OS), biological function, and clinicopathological features.

Results: Six cell cycle-linked genes (*PLK1*, *CDC20*, *HSP90AA1*, *CHEK1*, *HDAC1*, and *NDC80*) were chosen to create the prognostic model, demonstrating a good prognostic capacity. Further analyses indicated that the model could independently assess the OS of HCC patients. A single-sample gene set enrichment analysis (ssGSEA) indicated that the risk signature was remarkably linked to immune status. Additionally, there was a remarkable association of the risk signature with *TP53* mutation frequency, as well as immune checkpoint molecule expression levels.

Conclusions: We created a prediction model using six cell cycle-linked genes to predict HCC prognosis. The six genes are expected to be novel markers for HCC diagnosis, as well as treatment.

Keywords: Hepatocellular carcinoma (HCC); The Cancer Genome Atlas (TCGA); signature; prognosis

Submitted Jul 01, 2021. Accepted for publication Oct 14, 2021.

doi: 10.21037/tcr-21-1145

View this article at: <https://dx.doi.org/10.21037/tcr-21-1145>

Introduction

Hepatocellular carcinoma (HCC) is the most frequent histological type of liver cancer, that accounts for 75–85% of all types of primary liver cancer (1). On the basis of the 2018 global cancer statistics, HCC incidence ranks sixth, and the mortality rate ranks third (1). Multiple risk factors promoted occurrence and progression of HCC, mainly including hepatitis virus infection, aflatoxin exposure, alcohol abuse, and metabolic syndrome (2,3). At present,

HCC treatment approaches include non-pharmacological and pharmacological therapies, consisting of transcatheter arterial chemoembolization (TACE), surgical resection, small molecule targeted drugs, liver transplantation, ablation, and monoclonal antibodies (4). Although the level of therapeutic approaches of HCC has advanced in recent years, long-term prognosis of individuals with HCC remains unsatisfactory due to late diagnosis and recurrence (5). Therefore, exploring the underlying mechanism contributing to tumorigenesis

of HCC is mandatory to identify novel biomarkers for early diagnosis and targeted therapy.

Increasing evidence indicated that cell cycle dysregulation is strongly associated with tumor initiation and progression (6). The cell cycle is tightly regulated by cyclins and associated regulatory proteins (7,8). Currently, accumulated studies suggested that thorough investigation of biological process of cell cycle may improve survival prognosis and treatment effects for HCC patients. Xiao *et al.* reported that down-regulation of centromere protein M (CENPM) arrested cell cycle, as well as promoted apoptosis of HCC cells, inhibiting HCC migration and invasion (9). Liu *et al.* found that tanshinone (TA) I can induce G0/G1 arrest to exert anti-cancer effects in HCC through inhibiting cyclin D expression (10). Zeng *et al.* demonstrated that CCT6A depletion repressed HCC cell growth via repressing G1-to-S transition, as it downregulated cyclin D expression (11). Therefore, constructing a prediction model on the basis of cell cycle-linked genes may help estimate the prognosis of individuals with HCC.

Herein, we first obtained transcriptome along with the matching clinicopathological data of individuals with HCC from The Cancer Genome Atlas (TCGA) and International Cancer Genome Consortium (ICGC) data resources. Then, TCGA cohort data were employed to create an estimation model on the basis of the cell cycle-linked genes, and ICGC cohort data were employed to validate the prediction model. Furthermore, relationship of the risk signature with the biological function, as well as clinicopathological features, was analyzed.

We present the following article in accordance with the TRIPOD reporting checklist (available at <https://dx.doi.org/10.21037/tcr-21-1145>).

Methods

Data processing

The transcriptome, somatic mutation, along with the matching clinical data of 371 individuals with HCC were abstracted from TCGA (training cohort) (<https://portal.gdc.cancer.gov/>). Besides, the copy number variation (CNV) dataset was obtained from UCSC genome browser (<https://xena.ucsc.edu/>). Similarly, transcriptome profiling along with the matching clinicopathological information of 231 HCC samples were abstracted from the ICGC (<https://dcc.icgc.org/releases>) (validation cohort). A total of 1,875

cell cycle-linked genes were collected from a previous study. In this study, we further deleted 6 samples from the 371 samples from the TCGA database, including 5 samples with a survival time of 0 days and 1 sample with a missing survival time. This is because before the Lasso regression analysis, the survival time of these samples did not meet the prerequisites for the Lasso regression analysis. Therefore, a total of 365 samples from the TCGA database were used as the training cohort. The study was conducted in accordance with the Declaration of Helsinki (as revised in 2013).

Identification of cell cycle-linked genes for constructing a prediction model

First, 1,875 cell cycle-linked genes were uploaded into the Search Tool for Recurring Instances of Neighboring Genes (STRING) website (<https://string-db.org/>) to analyze the protein-protein interaction (PPI) network between genes. Meanwhile, according to each gene's number of adjacent nodules from high to low, the top 50 genes were screened for subsequent analysis. Then, differentially expressed genes (DEGs) among the 50 genes between HCC and neighboring non-malignant tissues were screened with the 'limma' package in R. The screening criteria were $|\log_2\text{fold change} (\log_2\text{FC})| > 1$ along with false discovery rate (FDR) < 0.05 . Moreover, univariate Cox regression analyses were applied to identify genes which could independently assess the prognosis of patients ($P < 0.001$) for the overall survival (OS) of individuals with HCC from the 50 genes, and further intersected with DEGs to obtain DEGs with independent prognostic value using 'Venn' package in R. Additionally, the somatic mutation and CNV information of DEGs with independent prognostic value were analyzed using R software.

Creation and verification of an estimation model using cell cycle-linked genes

DEGs with independent prognostic value were subjected to lasso regression assessment using 'glmnet' package to design a prediction model. Then, risk score of each sample was computed as below:

$$\text{Risk score} = \beta_1 \times \text{Exp1} + \beta_2 \times \text{Exp2} + \dots + \beta_i \times \text{Exp}_i \quad [1]$$

Where β designates the regression coefficient, and Exp designates the levels of genes. On the basis of the median risk score, TCGA cohort samples were stratified to two risk groups: high and low. Principal component analysis

(PCA) and t-distributed stochastic neighbor embedding (t-SNE) analyses were respectively conducted using 'Rtsne' and 'prcomp' functions to assess the clustering ability of prognostic model. Furthermore, Kaplan-Meier survival curve along with the receiver operating characteristic (ROC) curve were respectively drawn using 'survival' and 'survival ROC' packages to explore the accuracy of prediction model. Besides, according to the same calculation formula of the risk score, ICGC cohort samples were employed to verify the estimation capacity of prediction model.

Assessment of independent prognostic value of cell cycle-linked risk genes

To estimate the performance of the risk signature compared to conventional clinicopathologic features, were conducted univariate along with multivariate Cox regression analyses in R software.

Single-sample gene set enrichment analysis (ssGSEA)

To investigate the relationship of the risk signature with immune status, differences in both infiltrations of 16 kinds of immune cells, as well as the functions and pathways of 13 immune-related cells between the two risk groups were compared using 'GSVA' package in R.

Investigating the relationship of somatic mutation with survival outcomes of HCC patients, risk signature in the TCGA database

Tumor mutation burden (TMB) is the total number of mutations present in a tumor specimen (12). In this research, Kaplan-Meier survival assessment was employed to examine the relationship of HCC patients' survival outcomes with TMB, as well as TMB combined with risk signature. Additionally, mutation frequency differences of the top 30 genes between the two risk groups were analyzed with R software.

Exploring the differences in the expression levels of immune checkpoint molecules between the two risk groups in the TCGA database

Immune checkpoint molecules influence the efficacy of immunotherapy (13). The levels of three immune checkpoint molecules, consisting of PD-1, PD-L1, and CTLA-4, between the two risk groups were explored with

R software.

Examining the relationship between subgroups of patients with different clinicopathological features and risk signature in the TCGA database

According to different clinicopathological features (age, gender, and TNM-stage), we first divided patients in TCGA cohort into different subgroups. Then, we analyzed the differences in risk scores between different subgroups. In addition, we estimated the prognostic significance of risk signature in different subgroups using Kaplan-Meier analysis.

Statistical analyses

R software (V.4.0.2) was utilized for data analysis. The significance between the two groups was identified using Wilcox test. The survival time differences between the two risk groups were estimated using Kaplan-Meier curves and log-rank test. The area under the ROC curve (AUC) was calculated to assess the risk signature's accuracy. Independent factors of OS were determined using univariate along with multivariate Cox regression analyses. The ssGSEA scores of immune cells or functions between high- and low-risk groups were compared using Mann-Whitney test. $P < 0.05$ was the cut-off of statistical significance.

Results

Identification of cell cycle-related genes for constructing a prediction model

Figure 1 illustrates the workflow of data analysis (14). According to PPI network, we screened the top 50 cell cycle-linked genes in the TCGA dataset (Figure 2A). The Venn diagram shows 30 cell cycle-linked genes, which showed differential expression between HCC and neighboring non-malignant tissues and the potential to be independent prognostic biomarker (Figure 2B). Meanwhile, the heatmap displayed differential expression levels of 30 cell cycle-linked genes in HCC and neighboring non-malignant tissues (Figure 2C). The forest map showed that 30 cell cycle-linked genes were independent predictors of HCC prognosis [hazard ratio (HR) > 1 ; $P < 0.001$] (Figure 2D). Besides, the CNV analysis indicated that CNV deletion frequency was more common among 30 cell cycle-linked genes (Figure 2E). Based on the TCGA database, the somatic mutation analysis

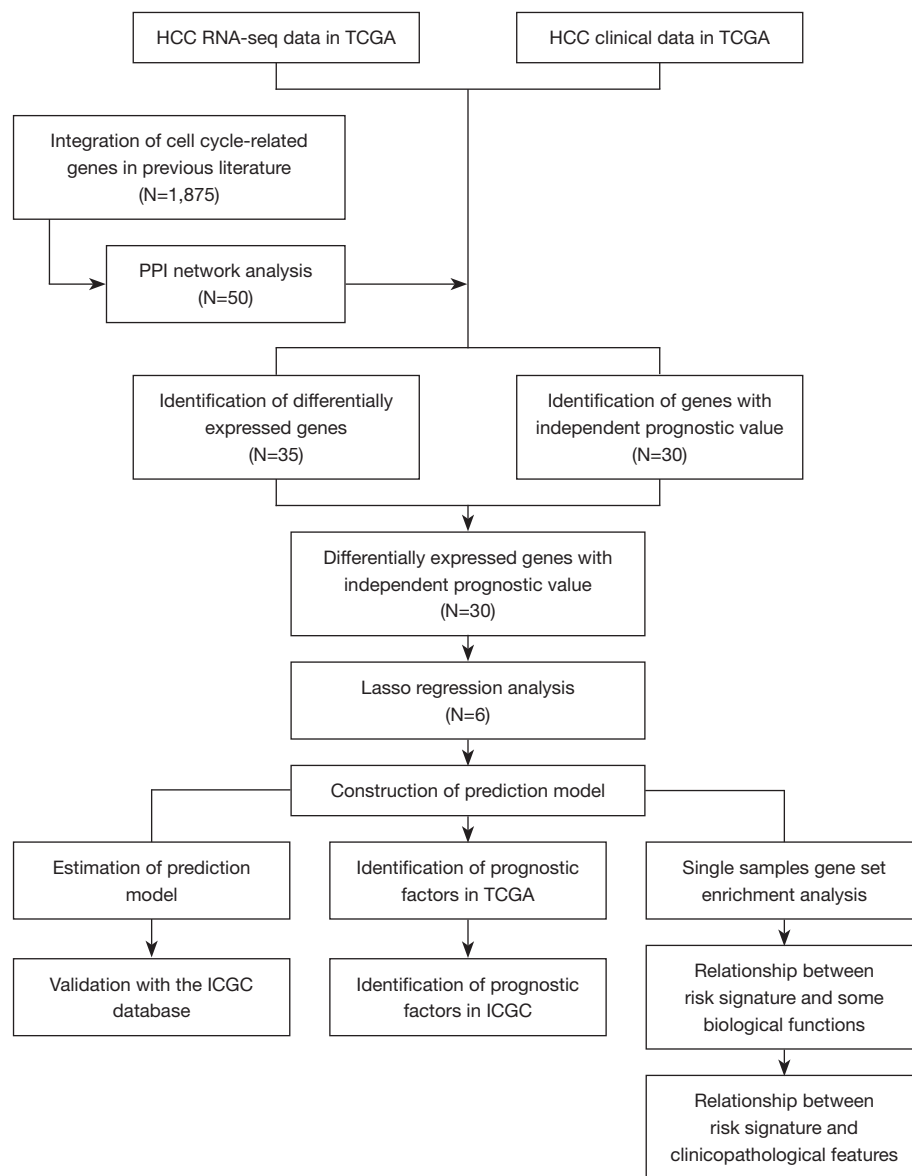


Figure 1 Flow chart of data analysis. HCC, hepatocellular carcinoma; TCGA, The Cancer Genome Atlas; PPI, protein-protein interaction; ICGC, International Cancer Genome Consortium.

illustrated that mutation frequency of 30 cell cycle-linked genes was very low (Figure 2F).

Constructing a prediction model using TCGA cohort

The 30 DEGs with independent prognostic value were conducted lasso regression analysis. Six genes (*PLK1*, *CDC20*, *HSP90AA1*, *CHEK1*, *HDAC1*, and *NDC80*) were selected to construct a prediction model. Risk scores were computed as below:

$$\begin{aligned}
 \text{Risk score} = & (0.007 \times \text{PLK1}) + (0.155 \times \text{CDC20}) \\
 & + (0.191 \times \text{HSP90AA1}) + (0.013 \times \text{CHEK1}) \\
 & + (0.189 \times \text{HDAC1}) + (0.085 \times \text{NDC80}) \quad [2]
 \end{aligned}$$

Evaluating the predictive ability of the prediction model using TCGA cohort

Based on the median risk score, all TCGA data set samples were stratified into high- (N=182) and low-risk (N=183)

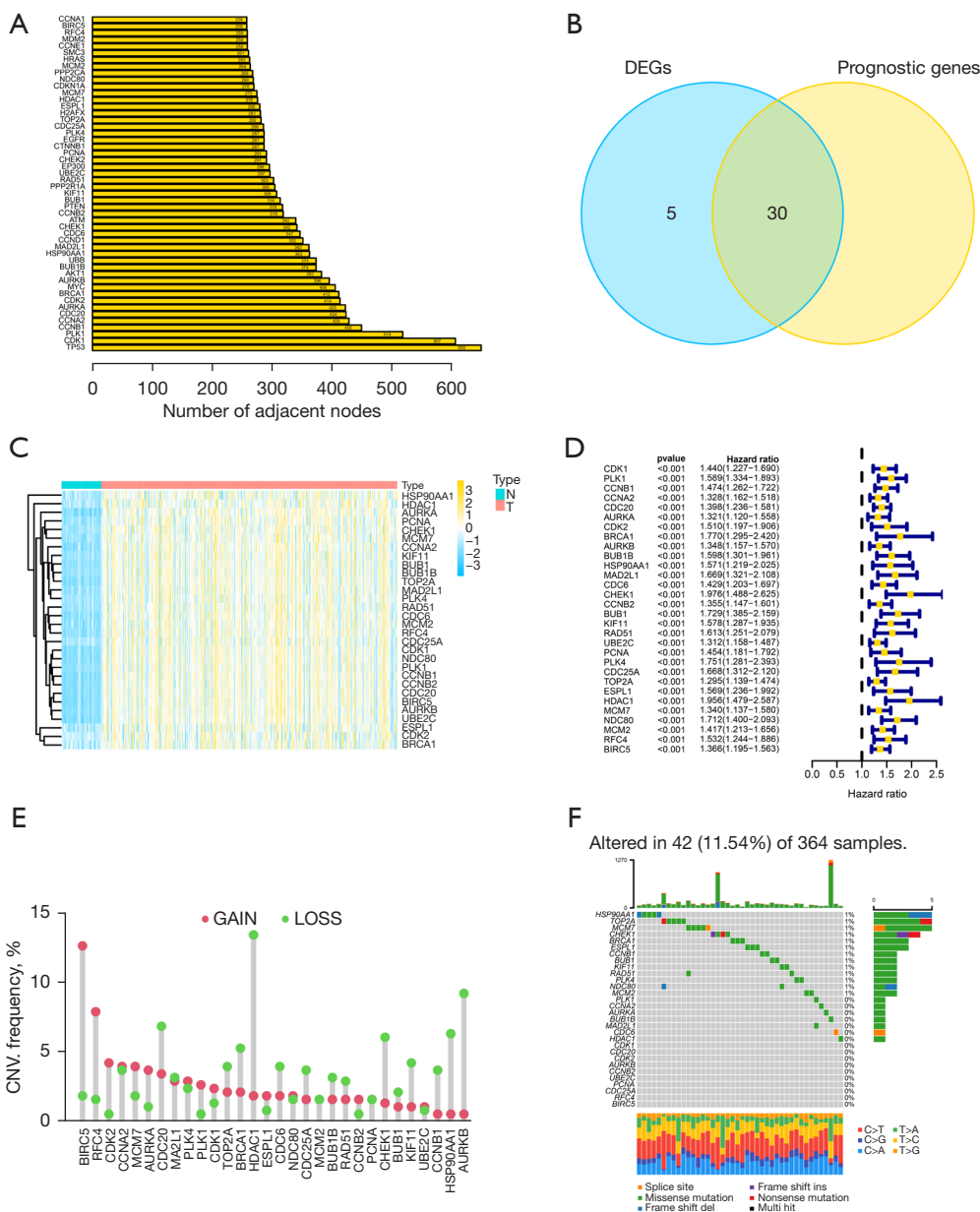


Figure 2 Prediction model based on cell cycle-linked genes. (A) The top 50 genes according to their interaction degrees. (B) Venn plot showing cell cycle-linked genes with differential expression and independent predictive value. (C) Heatmap showing genes with differential expression between HCC and neighboring non-malignant tissues. (D) Forest plots illustrating cell cycle-linked genes with independent predictive value for OS in individuals with HCC. (E) Distribution of the cell cycle-linked genes CNV frequency. (F) Distribution of the cell cycle-linked genes mutation frequency. T represents HCC tissue and N represents neighboring non-malignant tissue. HCC, hepatocellular carcinoma; OS, overall survival; CNV, copy number variation; DEGs, differentially expressed genes.

groups (Figure 3A). The risk plot indicated that high-risk score patients exhibited shorter survival times in contrast with those with low-risk scores (Figure 3B). Besides, PCA along with t-SNE tests uncovered that the prediction

model exhibited good clustering ability (Figure 3C,3D). Additionally, Kaplan-Meier analysis demonstrated that high-risk scores correlated with poorer OS (P=7.232e-05) (Figure 3E). The AUC values were determined using ROC

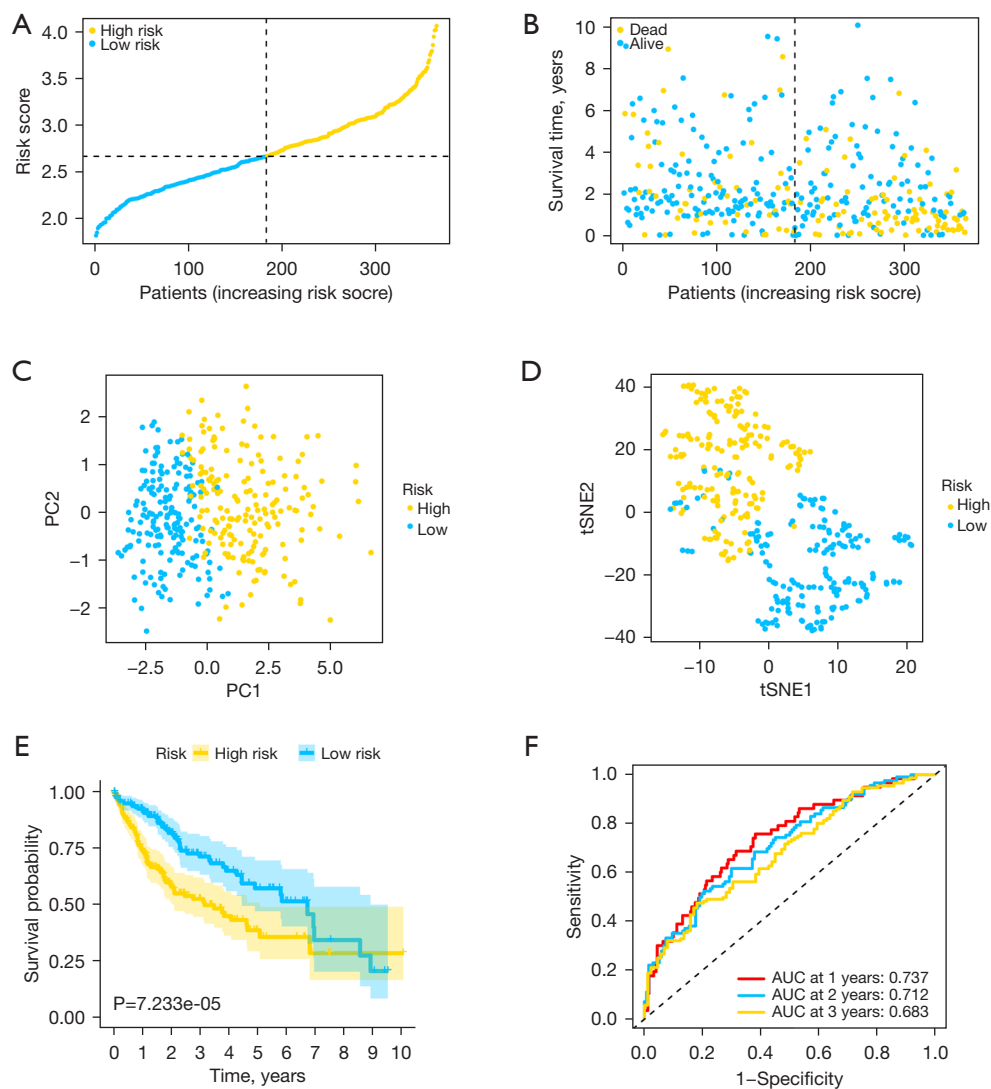


Figure 3 Estimation of prediction model using the TCGA data set. (A) The distribution of the risk scores. (B) The distributions of survival status. (C) PCA analysis of the risk scores. (D) t-SNE analysis of the risk scores. (E) Kaplan-Meier curves showing OS of patients. (F) ROC curves and AUCs were constructed to assess the predictive performance of the model. TCGA, The Cancer Genome Atlas; PCA, principal component analysis; t-SNE, t-distributed stochastic neighbor embedding; OS, overall survival; ROC, receiver operating characteristic; AUC, area under ROC curve.

curve analysis (0.737 at 1 year, 0.712 at 2 years, and 0.683 at 3 years) (Figure 3F).

Validating the performance of the prediction model using ICGC cohort

To test the predictive ability of the estimation model, ICGC data set samples were utilized for validation. The risk score of each sample was computed on the basis of

the same formula from TCGA cohort. ICGC data set samples were then stratified into high- (N=115) and low-risk (N=116) groups (Figure 4A). Similarly, patients with high-risk scores had worse outcomes in contrast with those with low-risk scores (Figure 4B). Likewise, PCA and t-SNE analyses showed that prediction model could well separate patients in different groups into two regions (Figure 4C,4D). Similarly, Kaplan-Meier data validated that patients with high-risk scores had a poorer survival prognosis in contrast

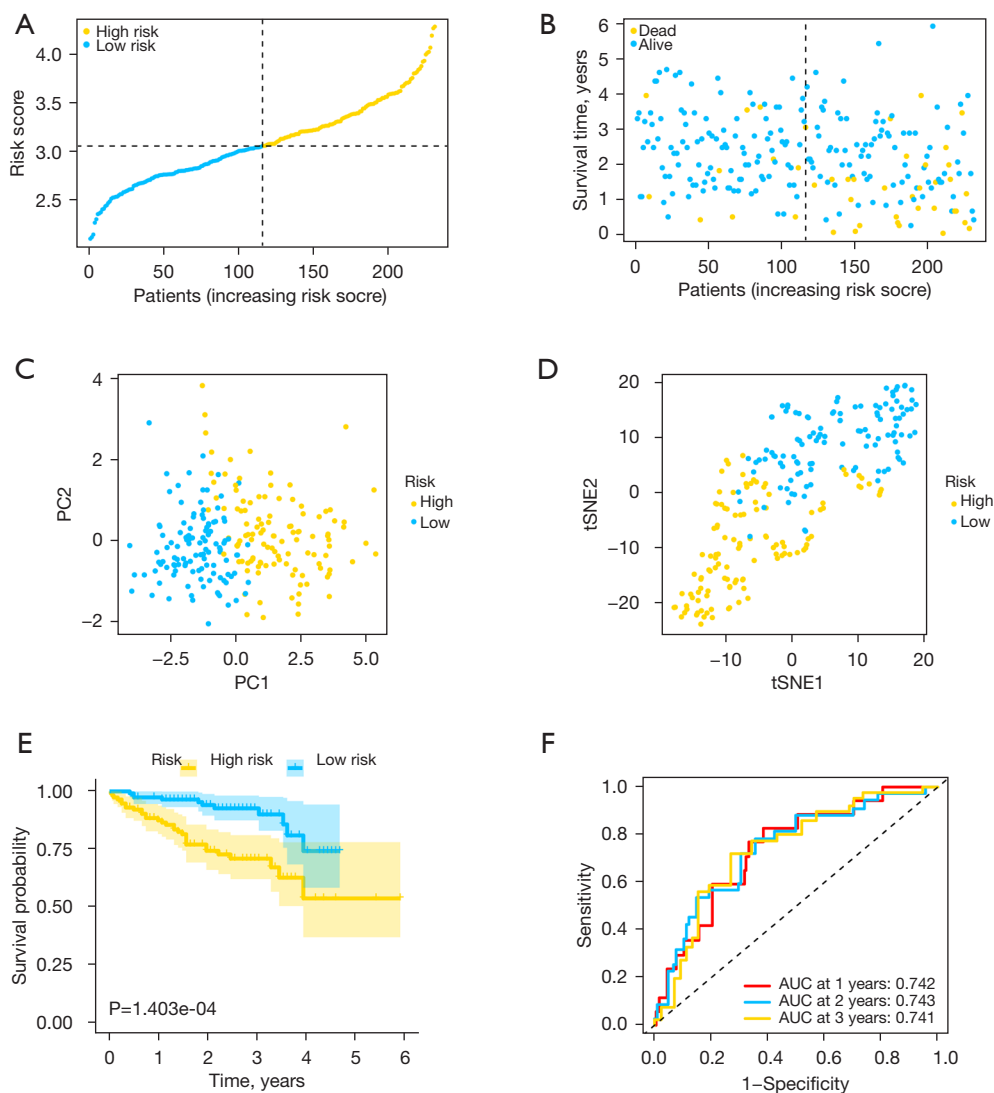


Figure 4 Validation of prediction model using the ICGC data set. (A) The distribution of the risk scores. (B) The distributions of survival status. (C) PCA analysis of the risk scores. (D) t-SNE analysis of the risk scores. (E) Kaplan-Meier curves showing OS of patients. (F) ROC curves and AUCs estimating the performance of the risk model. ICGC, International Cancer Genome Consortium; PCA, principal component analysis; t-SNE, t-distributed stochastic neighbor embedding; OS, overall survival; ROC, receiver operating characteristic; AUC, area under ROC curve.

with those with low-risk scores ($P=1.403e-04$) (Figure 4E). Besides, the AUC values were 0.742 at 1 year, 0.743 at 2 years, and 0.741 at 3 years, respectively (Figure 4F).

Assessment of independent predictive significance of cell cycle-linked risk score signature

Univariate along with multivariate Cox regression analyses

were employed to assess the independent predictive significance of risk signature for OS in TCGA, as well as ICGC cohorts. For TCGA cohort, univariate analysis indicated that TNM stage and risk signature were independent predictors of OS (Figure 5A). Moreover, multivariate analysis confirmed that TNM stage along with risk signature remained independent predictive factors (Figure 5B). Besides, ICGC cohort analysis results

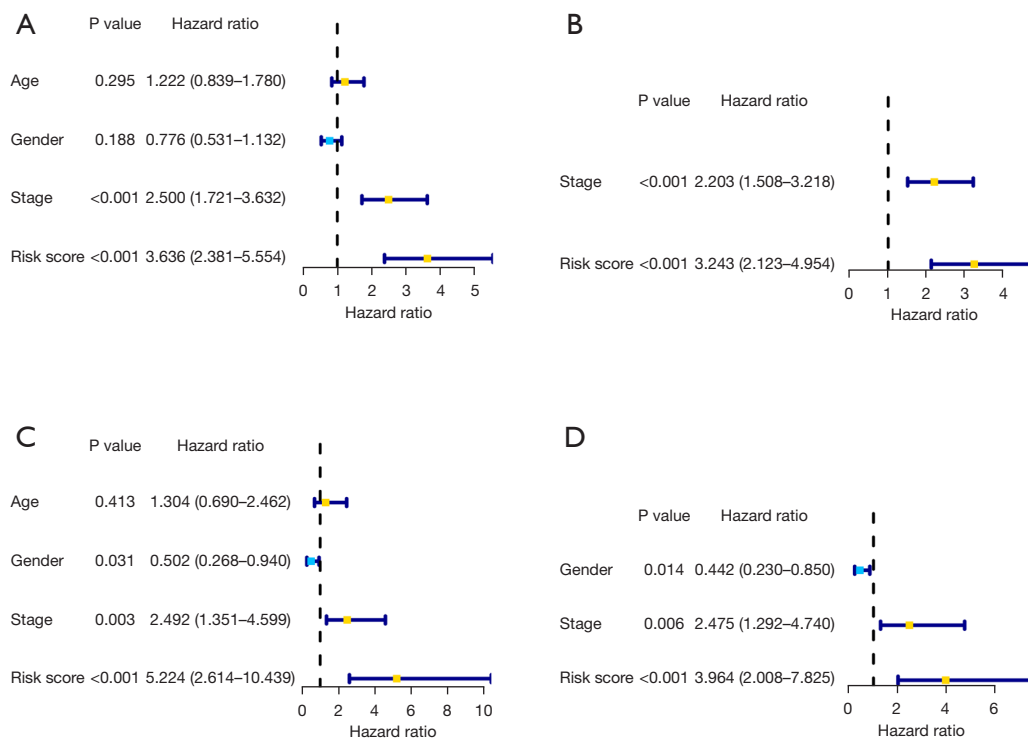


Figure 5 Assessment of the independent predictive significance of the risk signature. Univariate (A) and multivariate (B) Cox regression analyses of OS for individuals with HCC in the TCGA database. Univariate (C) and multivariate (D) Cox regression analyses of OS for patients with HCC in the ICGC dataset. OS, overall survival; HCC, hepatocellular carcinoma; TCGA, The Cancer Genome Atlas; ICGC, International Cancer Genome Consortium.

also demonstrated that TNM stage along with risk signature were independent predictive indicators of OS (Figure 5C, 5D).

The association between the immune status and risk signature

In this study, the infiltration of 13 immune cells, as well as the activity of 16 immune-linked functions or cascades were used to represent immune status and were quantified based on ssGSEA strategy. TCGA cohort patients were employed to explore the relationship of immune status with the risk signature, and ICGC cohort patients were used for validation. The scores of immune cell invasion showed that the scores of activated dendritic cells (aDCs), inhibited dendritic cells (iDCs), macrophages, and T helper 2 (Th2) cells were higher in high-risk group in contrast with those in low-risk group, whereas natural killer (NK) cells were lower in the high-risk group in

contrast with those in low-risk group (Figure 6A, 6B). Furthermore, the immune-linked functions or cascades analysis indicated that type II interferon (IFN) response was lower in the high-risk group in contrast with that in the low-risk group (Figure 6C, 6D). These results confirmed that risk signature could better reflect the immune status in HCC.

The relationship between somatic mutation and survival outcomes, risk signature in the TCGA database

Kaplan-Meier analysis illustrated that patients with high TMB exhibited shorter survival times in contrast with those with low TMB (Figure 7A). Moreover, patients with high TMB and high-risk scores had the worst survival outcomes (Figure 7B). Besides, TP53 is the most commonly mutated gene, and mutation frequency of TP53 was remarkably higher in the high-risk group (43%) in contrast with that in the low-risk group (12%) (Figure 7C, 7D).

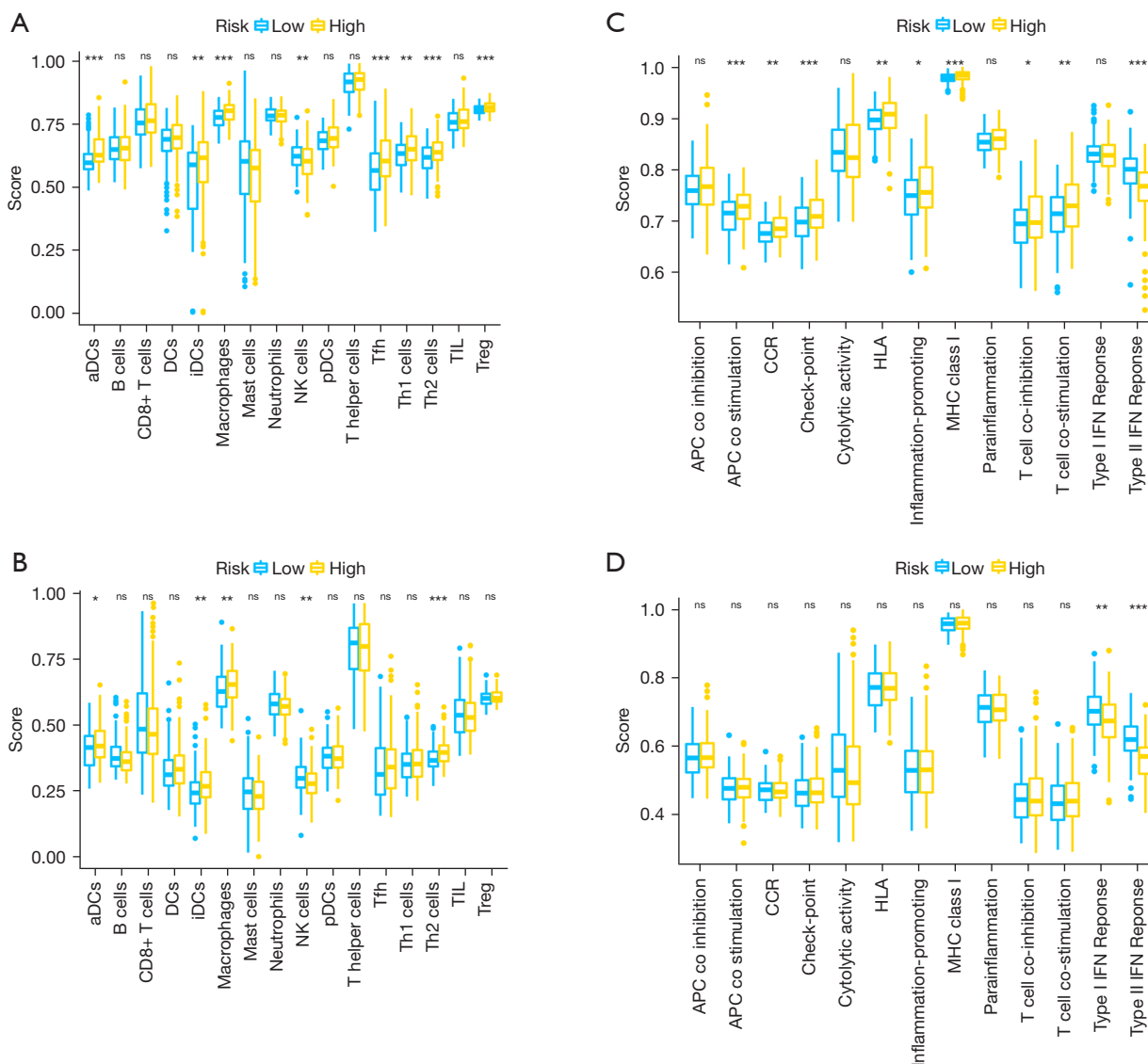


Figure 6 ssGSEA analysis of the enrichment scores of the immune status between the high- and low-risk groups. The scores of 16 immune cells infiltration in the TCGA (A), as well as ICGC (B) data sets. The scores of 13 immune-linked functions or cascades in the TCGA (C) and ICGC (D) data sets. *, $P < 0.05$; **, $P < 0.01$; ***, $P < 0.001$; ns, no significance. ssGSEA, single-sample gene set enrichment analysis; TCGA, The Cancer Genome Atlas; ICGC, International Cancer Genome Consortium; aDCs, activated dendritic cells; iDCs, inhibited dendritic cells; NK, natural killer; Th, T helper; TIL, tumor-infiltrating lymphocyte; HLA, human leukocyte antigen; IFN, interferon; CCR, cytokine-cytokine receptor.

The differences in the expression of immune checkpoint molecules between high- and low-risk groups in the TCGA database

The box plots showed that expression levels of PD-1 ($P = 8.1 \times 10^{-11}$), PD-L1 ($P = 0.044$), and CTLA-4 ($P = 1 \times 10^{-11}$) were remarkably higher in high-risk group in contrast with

those in the low-risk group (Figure 8A-8C).

The relationship between subgroups with different clinicopathological features and risk signature in the TCGA database

In this study, we found that patients with age ≤ 65 or with

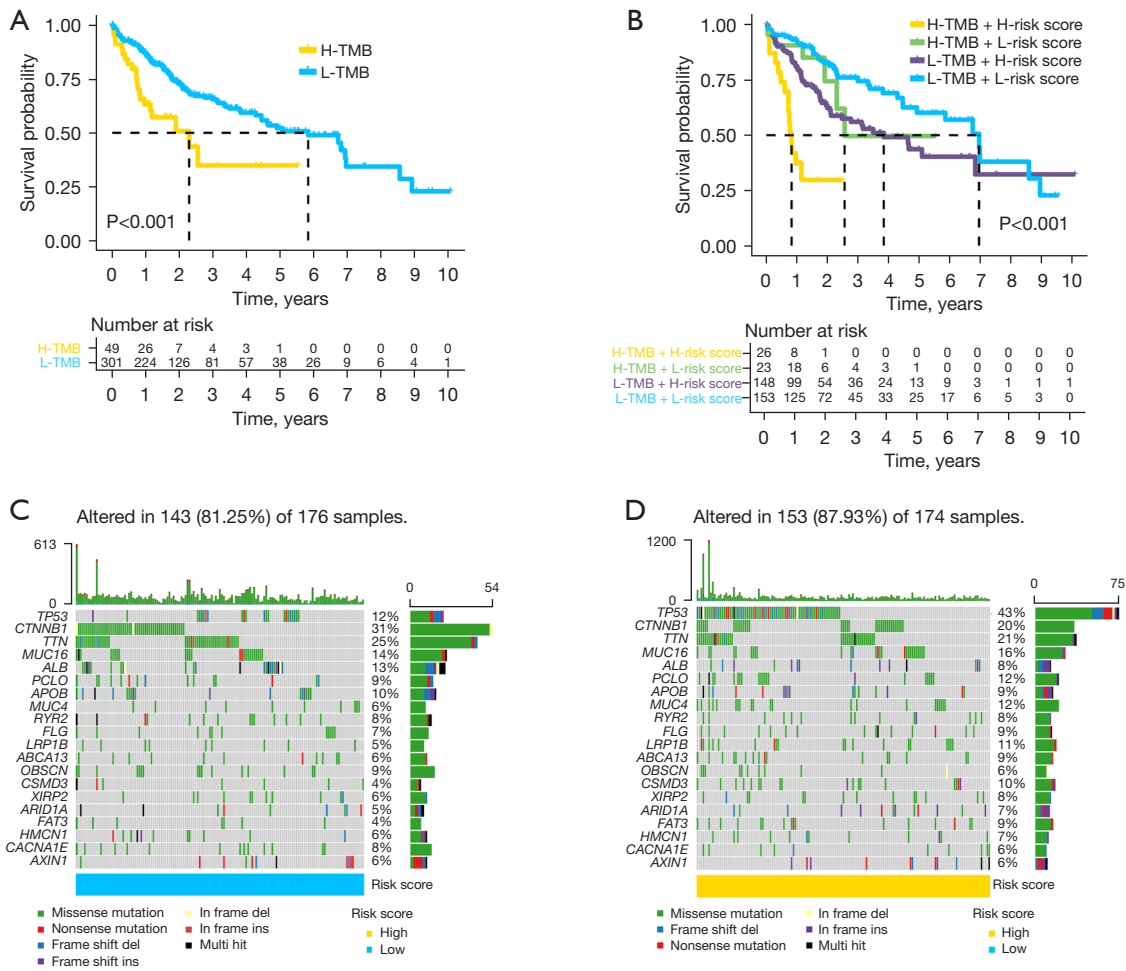


Figure 7 The relationship between somatic mutation and clinical outcomes as well as risk signature based on the TCGA database. The Kaplan-Meier survival assessment of patients with different TMB (A) and different TMB combined risk signature (B). The difference in somatic mutation between low- (C) and high-risk (D) groups. TCGA, The Cancer Genome Atlas; TMB, tumor mutation burden.

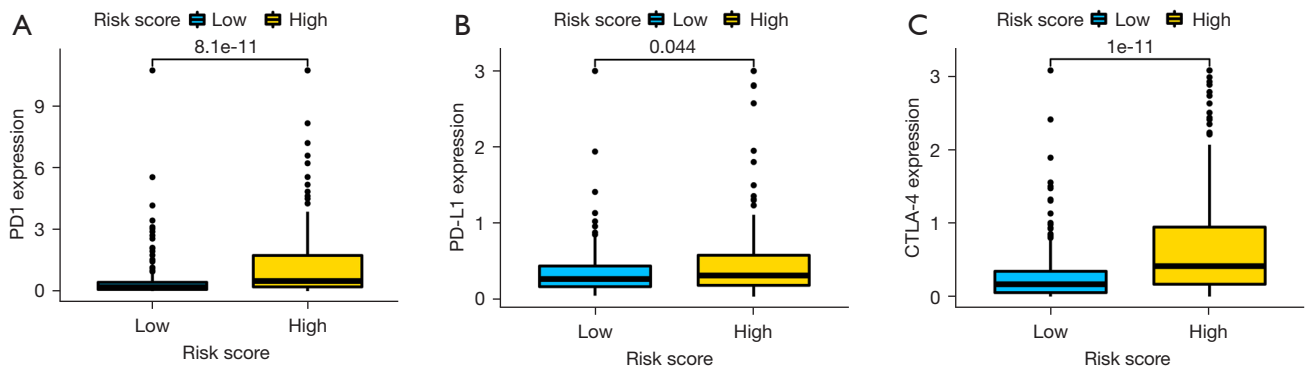


Figure 8 The differences in the expression of immune checkpoint molecules between high- and low-risk groups in the TCGA cohort. The differential expression of PD1 (A), PD-L1 (B), and CTLA-4 (C) between high- and low-risk groups. TCGA, The Cancer Genome Atlas.

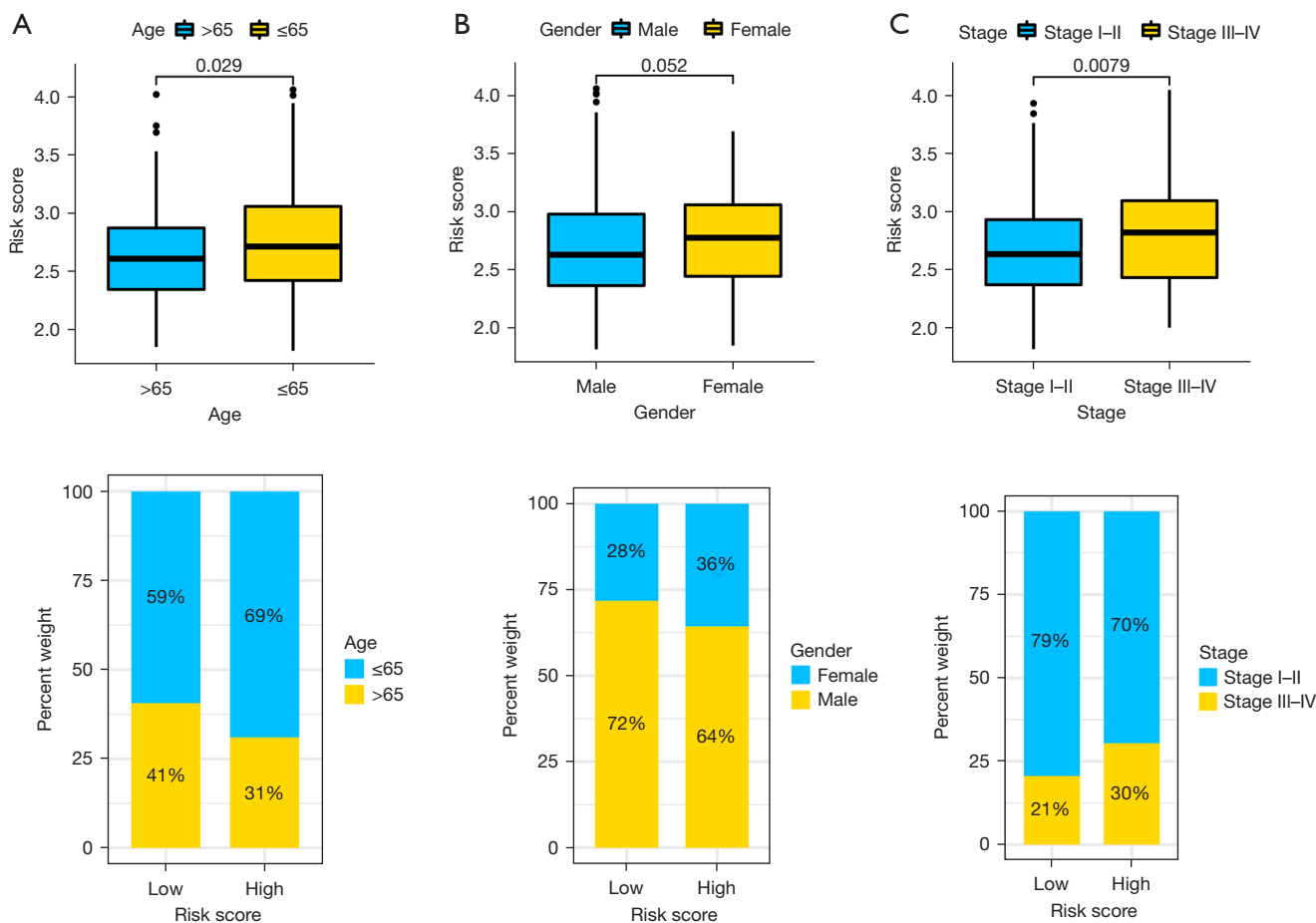


Figure 9 The distribution of risk score between the different subgroups from the TCGA cohort. The distribution of risk score between the different subgroups based on age (A), gender (B), and TNM stage (C), respectively. TCGA, The Cancer Genome Atlas.

stage III–IV exhibited remarkably higher risk score in contrast with corresponding those with age >65 or with stage I–II (Figure 9A–9C). Additionally, there was significant differences between high- and low-risk groups for patients with age >65 ($P < 0.001$) or male ($P < 0.001$) or stage I–II ($P = 0.003$) or stage III–IV ($P = 0.014$) (Figure 10A–10C).

Discussion

Herein, we not only analyzed the differential expression of 50 cell cycle-linked genes in HCC and neighboring non-malignant tissues but also assessed the relationship of the expression of these genes with OS of individuals with HCC. Besides, a prediction model using six cell cycle-linked genes was built and validated based on public database. Importantly, this prediction model can not only predict the survival prognosis and biological function of HCC patients

well but also provide novel biomarkers for precision treatment.

The cell cycle dysregulation is one of the most significant features of tumors, and the elucidation of the underlying mechanisms is expected to improve tumor therapy development (15). Recently, with the rapid development of high-throughput sequencing technology and the release of public databases, it is possible to systematically explore the expression and function of cell cycle-linked genes in HCC tissues. For instance, a study based on bioinformatics reported that *MITD1*, involved in cell cycle regulation, can be employed as an independent predictive factor for individuals with HCC, and *MITD1* expression is associated with clinicopathological characteristics and natural killer cell infiltration (16). Additionally, increasing findings using bioinformatics demonstrated that DEGs between HCC and neighboring non-malignant tissues were remarkably

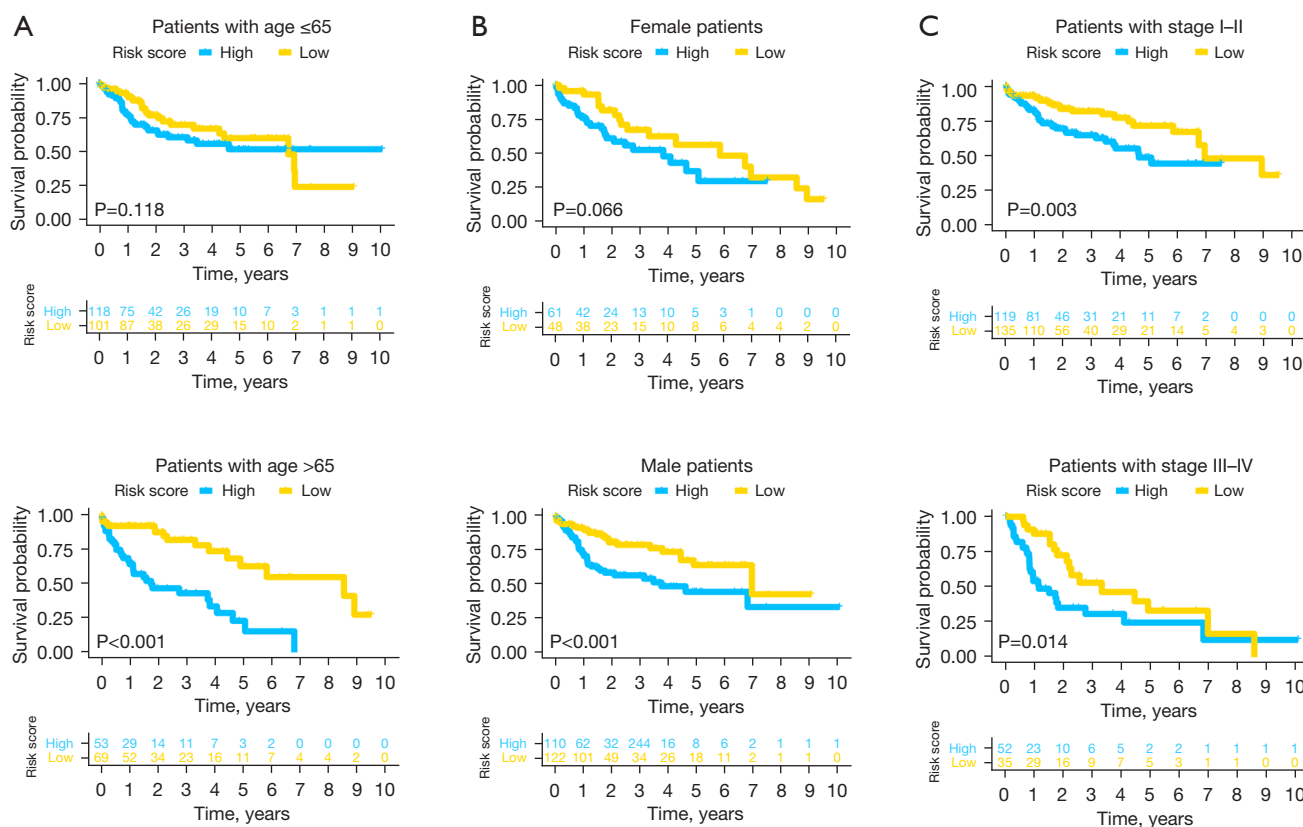


Figure 10 The Kaplan-Meier survival assessment of the different subgroups from the TCGA cohort. The Kaplan-Meier survival results for subgroups based on age (A), gender (B), and TNM stage (C), respectively. TCGA, The Cancer Genome Atlas.

enriched in cell cycle pathway (17-19). Therefore, the utility of bioinformatics to study the function of cell cycle-linked genes in HCC pathogenesis is necessary for improving the therapeutic effect of HCC.

Furthermore, we constructed an estimation model using six cell cycle-linked genes, including *PLK1*, *CDC20*, *HSP90AA1*, *CHEK1*, *HDAC1*, and *NDC80*. For *PLK1*, several studies indicated that *PLK1* expression was higher in HCC tissues in contrast with that in neighboring non-malignant tissues, and *PLK1* overexpression was linked to poor prognosis in individuals with HCC (20-22). Moreover, *PLK1* has proven to be a promising therapeutic target, and its knockout can effectively repress the proliferation and migration of HCC cells (23,24). Deng *et al.* found that *PLK1* inhibition induces mitotic arrest at G2/M phase, leading to HCC cell apoptosis (25). Numerous findings based on bioinformatics confirmed that *CDC20* might have a critical regulatory role in the occurrence and progression of HCC (26-28). Moreover, increased *CDC20* was linked to poor prognosis of individuals with HCC (29,30). Additionally,

Liu *et al.* stated that *CDC20* inhibition could activate HCC cell apoptosis and autophagy (31). For *HSP90AA1*, Chen *et al.* illustrated that *HSP90AA1* expression was remarkably increased in HCC tissues, and high *HSP90AA1* expression is an indicator of unfavorable prognosis in individuals with HCC (32). Shi *et al.* indicated that preventing *HSP90AA1* degradation can activate c-MYC, leading to initiation and progression of HCC (33). Regarding *CHEK1* (also known as *CHK1*), Gong *et al.* illustrated that *CHEK1* was remarkably up-regulated in HCC tissues and demonstrated that *CHEK1* inhibition could diminish proliferative and invasive potentials of HCC cells (34). Another study has also confirmed *CHEK1* significance as a potential therapeutic target for HCC (35). They found that interferon regulatory factor 1 (IRF-1) can inhibit *CHEK1* expression by inducing miR-195, contributing to apoptosis of HCC cells and infiltration of NK cells (35). For *HDAC1*, a previous study demonstrated that *HDAC1* was up-regulated in HCC tissues, and high expression of *HDAC1* was linked to poor tumor differentiation, contributing to tumor progression (36). In

addition, two studies indicated that *HDAC1* upregulation could facilitate HCC development by promoting epithelial-mesenchymal transition (EMT) (37,38). Besides, some findings demonstrated that *HDAC1* inhibition could repress growth of HCC cells and trigger cell cycle arrest and apoptosis in HCC cells (39-42). For *NDC80*, Ju *et al.* documented that *NDC80* expression is remarkably increased in HCC tissues in contrast with that in neighboring non-malignant tissues, and *NDC80* silencing can inhibit proliferation and contribute to apoptosis for HCC cells (43). Liu *et al.* also manifested that *NDC80* knockdown can inhibit growth of HCC cells (44). In general, the expression levels of these six genes (*PLK1*, *CDC20*, *HSP90AA1*, *CHEK1*, *HDAC1*, and *NDC80*) are remarkably increased in HCC tissues, and the up-regulated expression was linked to poor prognosis of individuals with HCC.

Currently, TNM staging system has been widely used to assess survival prognosis and guide treatment in HCC. However, since TNM staging system cannot consider the heterogeneity of patients at the same stage, it cannot always reliably predict a patient's survival. The occurrence and development of tumors are closely linked to disorders of some biological functions. Therefore, exploring the function of linked genes involved in these biological processes is expected to improve prediction accuracy and therapeutic effects in the future. Herein, we constructed an estimation model using cell cycle-linked genes. We found that this cell cycle-linked risk signature can make a good prediction of prognosis and disease progression of individuals with HCC, even for subgroups of patients with different clinicopathological features. Importantly, this risk signature also can reflect some important status of biological functions, such as immune-linked function, gene mutation frequency, and expression of immune checkpoint molecules, which helps clinicians adopt more accurate and personalized treatments for individuals with HCC.

Based on ssGSEA results, we discovered that infiltration of tumor-associated macrophages in the high-risk group was dramatically higher in contrast with that in the low-risk group. In recent years, increasing basic and clinical studies have illustrated that the number and phenotype of tumor-linked macrophages infiltrated in tumor tissues are closely linked to the prognosis of tumor patients (45). As the main component of the tumor microenvironment, tumor-linked macrophages secrete numerous cytokines to repress the body's adaptive immune response, accelerate the growth of tumor cells, and promote tumor-linked angiogenesis and tumor metastasis (46). Yao *et al.* found that HCC cells

cultured with M2-like macrophages exhibit enhanced metastatic ability and upregulation of EMT-linked markers via TLR4/STAT3 signaling cascade (47). In addition, a recent study reported a new type of subpopulation in tumor-associated macrophages (48). These special cells can dramatically promote tumor angiogenesis because of expressing tyrosine-protein kinase receptor Tie-2 (also referred to as angiopoietin-1 receptor), which can bind to all known angiopoietins (49,50).

Additionally, we found that *TP53* mutation is the most common type of mutation, and the frequency of *TP53* mutation is higher in high-risk groups in contrast with that in low-risk groups. A previous study indicated that individuals with HCC with *TP53* mutation are correlated with worse clinical stage and prognosis (51). Long *et al.* reported that *TP53* mutation led to downregulation of immune response in HCC, correlating higher infiltration of immunosuppressive cells and immune checkpoint molecule expression (52). Interestingly, we also found that the expression levels of immune checkpoint molecules were higher in high-risk group in contrast with that those in low-risk group, consistent with a previous study suggesting that tumor cells can suppress T cell-mediated immune responses by up-regulating immune checkpoint molecules, thereby evading immune attacks and promoting metastasis (53). Gao *et al.* demonstrated that PD-L1 overexpression was dramatically associated with progression and postoperative recurrence (54). Another study revealed that adding anti-CTLA-4 antibody can further enhance antitumor effect of tumor-specific T cells (55). These findings further support that expression levels of immune checkpoint molecules are correlated with survival prognosis and therapeutic effect of HCC.

As far as we know, this is the first study to use cell cycle-linked genes to create an estimation model for prognosis of individuals with HCC. Meanwhile, the prediction model had good predictive ability. Besides, this risk signature can be utilized not only as an independent prognostic factor for OS but also to assess differences in biological function status between different groups. Notably, six cell cycle-linked genes are expected to be novel biomarkers for HCC diagnosis, as well as treatment. Nevertheless, this study has some limitations. Firstly, all findings were retrospectively obtained based on a public database, which required further prospective verification. Secondly, the underlying function of the six genes requires additional validation via experimental studies. Thirdly, identifying these six genes comes from comparing the DEGs between HCC and non-malignant tissues, and the influence of different HCC

pathogenic factors on the expression of cell cycle-linked genes needs to be further explored.

Conclusions

We established a prognostic model using six cell cycle-linked genes for predicting HCC prognosis, implying good predictive ability and proved to be an independent predictor of OS. Hence, the six genes were expected to be novel biomarkers for HCC diagnosis and treatment.

Acknowledgments

We thank Home for Researchers editorial team (www.home-for-researchers.com) for editing this manuscript.

Funding: Beijing Hospitals Authority Youth Programme (QMS20200803 to CZ); National Natural Science Foundation of China (No. 81800483).

Footnote

Reporting Checklist: The authors have completed the TRIPOD reporting checklist. Available at <https://dx.doi.org/10.21037/tcr-21-1145>

Peer Review File: Available at <https://dx.doi.org/10.21037/tcr-21-1145>

Conflicts of Interest: All authors have completed the ICMJE uniform disclosure form (available at <https://dx.doi.org/10.21037/tcr-21-1145>). The authors have no conflicts of interest to declare.

Ethical Statement: The authors are accountable for all aspects of the work in ensuring that questions related to the accuracy or integrity of any part of the work are appropriately investigated and resolved. The study was conducted in accordance with the Declaration of Helsinki (as revised in 2013).

Open Access Statement: This is an Open Access article distributed in accordance with the Creative Commons Attribution-NonCommercial-NoDerivs 4.0 International License (CC BY-NC-ND 4.0), which permits the non-commercial replication and distribution of the article with the strict proviso that no changes or edits are made and the original work is properly cited (including links to both the formal publication through the relevant DOI and the license).

See: <https://creativecommons.org/licenses/by-nc-nd/4.0/>.

References

1. Bray F, Ferlay J, Soerjomataram I, et al. Global cancer statistics 2018: GLOBOCAN estimates of incidence and mortality worldwide for 36 cancers in 185 countries. *CA Cancer J Clin* 2018;68:394-424.
2. El-Serag HB, Rudolph KL. Hepatocellular carcinoma: epidemiology and molecular carcinogenesis. *Gastroenterology* 2007;132:2557-76.
3. Welzel TM, Graubard BI, Zeuzem S, et al. Metabolic syndrome increases the risk of primary liver cancer in the United States: a study in the SEER-Medicare database. *Hepatology* 2011;54:463-71.
4. Chen Z, Xie H, Hu M, et al. Recent progress in treatment of hepatocellular carcinoma. *Am J Cancer Res* 2020;10:2993-3036.
5. Finn RS, Zhu AX, Farah W, et al. Therapies for advanced stage hepatocellular carcinoma with macrovascular invasion or metastatic disease: a systematic review and meta-analysis. *Hepatology* 2018;67:422-35.
6. Stein GS, van Wijnen AJ, Stein JL, et al. An architectural perspective of cell-cycle control at the G1/S phase cell-cycle transition. *J Cell Physiol* 2006;209:706-10.
7. Wang XQ, Liu YK, Qing C, et al. A review of the effectiveness of antimetabolic drug injections for hypertrophic scars and keloids. *Ann Plast Surg* 2009;63:688-92.
8. Fang JS, Coon BG, Gillis N, et al. Shear-induced Notch-Cx37-p27 axis arrests endothelial cell cycle to enable arterial specification. *Nat Commun* 2017;8:2149.
9. Xiao Y, Najeeb RM, Ma D, et al. Upregulation of CENPM promotes hepatocarcinogenesis through multiple mechanisms. *J Exp Clin Cancer Res* 2019;38:458.
10. Liu X, Liu J. Tanshinone I induces cell apoptosis by reactive oxygen species-mediated endoplasmic reticulum stress and by suppressing p53/DRAM-mediated autophagy in human hepatocellular carcinoma. *Artif Cells Nanomed Biotechnol* 2020;48:488-97.
11. Zeng G, Wang J, Huang Y, et al. Overexpressing CCT6A contributes to cancer cell growth by affecting the G1-to-S phase transition and predicts a negative prognosis in hepatocellular carcinoma. *Onco Targets Ther* 2019;12:10427-39.
12. Shrestha R, Prithviraj P, Anaka M, et al. Monitoring immune checkpoint regulators as predictive biomarkers in hepatocellular carcinoma. *Front Oncol* 2018;8:269.
13. Xiong Y, Xiong Z, Cao H, et al. Multi-dimensional omics

- characterization in glioblastoma identifies the purity-associated pattern and prognostic gene signatures. *Cancer Cell Int* 2020;20:37.
14. Wang J, Han K, Zhang C, et al. Identification and validation of ADME genes as prognosis and therapy markers for hepatocellular carcinoma patients. *Biosci Rep* 2021;41:BSR20210583.
 15. Malumbres M, Barbacid M. To cycle or not to cycle: a critical decision in cancer. *Nat Rev Cancer* 2001;1:222-31.
 16. Shen H, Wang Z, Ren S, et al. Prognostic biomarker MITD1 and its correlation with immune infiltrates in hepatocellular carcinoma (HCC). *Int Immunopharmacol* 2020;81:106222.
 17. Craske MG, Street L, Barlow DH. Instructions to focus upon or distract from internal cues during exposure treatment of agoraphobic avoidance. *Behav Res Ther* 1989;27:663-72.
 18. Shen S, Kong J, Qiu Y, et al. Identification of core genes and outcomes in hepatocellular carcinoma by bioinformatics analysis. *J Cell Biochem* 2019;120:10069-81.
 19. Wang Z, Pan L, Guo D, et al. A novel five-gene signature predicts overall survival of patients with hepatocellular carcinoma. *Cancer Med* 2021;10:3808-21.
 20. He ZL, Zheng H, Lin H, et al. Overexpression of polo-like kinase1 predicts a poor prognosis in hepatocellular carcinoma patients. *World J Gastroenterol* 2009;15:4177-82.
 21. Sun W, Su Q, Cao X, et al. High expression of polo-like kinase 1 is associated with early development of hepatocellular carcinoma. *Int J Genomics* 2014;2014:312130.
 22. Mok WC, Wasser S, Tan T, et al. Polo-like kinase 1, a new therapeutic target in hepatocellular carcinoma. *World J Gastroenterol* 2012;18:3527-36.
 23. Xu L, Zhu Y, Shao J, et al. Dasatinib synergises with irinotecan to suppress hepatocellular carcinoma via inhibiting the protein synthesis of PLK1. *Br J Cancer* 2017;116:1027-36.
 24. Zheng DW, Xue YQ, Li Y, et al. Volasertib suppresses the growth of human hepatocellular carcinoma in vitro and in vivo. *Am J Cancer Res* 2016;6:2476-88.
 25. Deng Z, Chen G, Liu S, et al. Discovery of methyl 3-((2-((1-(dimethylglycyl)-5-methoxyindolin-6-yl)amino)-5-(trifluoro-methyl) pyrimidin-4-yl)amino)thiophene-2-carboxylate as a potent and selective polo-like kinase 1 (PLK1) inhibitor for combating hepatocellular carcinoma. *Eur J Med Chem* 2020;206:112697.
 26. Yang WX, Pan YY, You CG. CDK1, CCNB1, CDC20, BUB1, MAD2L1, MCM3, BUB1B, MCM2, and RFC4 may be potential therapeutic targets for hepatocellular carcinoma using integrated bioinformatic analysis. *Biomed Res Int* 2019;2019:1245072.
 27. Zhuang L, Yang Z, Meng Z. Upregulation of BUB1B, CCNB1, CDC7, CDC20, and MCM3 in tumor tissues predicted worse overall survival and disease-free survival in hepatocellular carcinoma patients. *Biomed Res Int* 2018;2018:7897346.
 28. Mi N, Cao J, Zhang J, et al. Identification of hub genes involved in the occurrence and development of hepatocellular carcinoma via bioinformatics analysis. *Oncol Lett* 2020;20:1695-708.
 29. Zhang X, Zhang X, Li X, et al. Connection between CDC20 expression and hepatocellular carcinoma prognosis. *Med Sci Monit* 2021;27:e926760.
 30. Yang G, Wang G, Xiong Y, et al. CDC20 promotes the progression of hepatocellular carcinoma by regulating epithelial-mesenchymal transition. *Mol Med Rep* 2021;24:483.
 31. Liu M, Zhang Y, Liao Y, et al. Evaluation of the antitumor efficacy of RNAi-mediated inhibition of CDC20 and heparanase in an orthotopic liver tumor model. *Cancer Biother Radiopharm* 2015;30:233-9.
 32. Chen W, Li G, Peng J, et al. Transcriptomic analysis reveals that heat shock protein 90 α is a potential diagnostic and prognostic biomarker for cancer. *Eur J Cancer Prev* 2020;29:357-64.
 33. Shi W, Feng L, Dong S, et al. FBXL6 governs c-MYC to promote hepatocellular carcinoma through ubiquitination and stabilization of HSP90AA1. *Cell Commun Signal* 2020;18:100.
 34. Gong D, Feng PC, Ke XF, et al. Silencing long non-coding RNA LINC01224 inhibits hepatocellular carcinoma progression via microRNA-330-5p-induced inhibition of CHEK1. *Mol Ther Nucleic Acids* 2020;19:482-97.
 35. Yan Y, Zheng L, Du Q, et al. Interferon regulatory factor 1 (IRF-1) downregulates Checkpoint kinase 1 (CHK1) through miR-195 to upregulate apoptosis and PD-L1 expression in Hepatocellular carcinoma (HCC) cells. *Br J Cancer* 2021;125:101-11.
 36. Ler SY, Leung CH, Khin LW, et al. HDAC1 and HDAC2 independently predict mortality in hepatocellular carcinoma by a competing risk regression model in a Southeast Asian population. *Oncol Rep* 2015;34:2238-50.
 37. Zhou H, Xu J, Zhang C, et al. Aberrant histone deacetylase 1 expression upregulates vimentin expression via an NF-

- κ B-dependent pathway in hepatocellular carcinoma. *Oncol Lett* 2019;18:339-47.
38. Lei W, Zhang K, Pan X, et al. Histone deacetylase 1 is required for transforming growth factor-beta1-induced epithelial-mesenchymal transition. *Int J Biochem Cell Biol* 2010;42:1489-97.
 39. Zhang Y, Chen J, Wu SS, et al. HOXA10 knockdown inhibits proliferation, induces cell cycle arrest and apoptosis in hepatocellular carcinoma cells through HDAC1. *Cancer Manag Res* 2019;11:7065-76.
 40. Zhou H, Cai Y, Liu D, et al. Pharmacological or transcriptional inhibition of both HDAC1 and 2 leads to cell cycle blockage and apoptosis via p21Waf1/Cip1 and p19INK4d upregulation in hepatocellular carcinoma. *Cell Prolif* 2018;51:e12447.
 41. Sun TY, Xie HJ, Li Z, et al. miR-34a regulates HDAC1 expression to affect the proliferation and apoptosis of hepatocellular carcinoma. *Am J Transl Res* 2017;9:103-14.
 42. Buurman R, Sandbothe M, Schlegelberger B, et al. HDAC inhibition activates the apoptosome via Apaf1 upregulation in hepatocellular carcinoma. *Eur J Med Res* 2016;21:26.
 43. Ju LL, Chen L, Li JH, et al. Effect of NDC80 in human hepatocellular carcinoma. *World J Gastroenterol* 2017;23:3675-83.
 44. Liu B, Yao Z, Hu K, et al. ShRNA-mediated silencing of the Ndc80 gene suppress cell proliferation and affected hepatitis B virus-related hepatocellular carcinoma. *Clin Res Hepatol Gastroenterol* 2016;40:297-303.
 45. Lin Y, Xu J, Lan H. Tumor-associated macrophages in tumor metastasis: biological roles and clinical therapeutic applications. *J Hematol Oncol* 2019;12:76.
 46. Chen Y, Song Y, Du W, et al. Tumor-associated macrophages: an accomplice in solid tumor progression. *J Biomed Sci* 2019;26:78.
 47. Yao RR, Li JH, Zhang R, et al. M2-polarized tumor-associated macrophages facilitated migration and epithelial-mesenchymal transition of HCC cells via the TLR4/STAT3 signaling pathway. *World J Surg Oncol* 2018;16:9.
 48. Matsubara T, Kanto T, Kuroda S, et al. TIE2-expressing monocytes as a diagnostic marker for hepatocellular carcinoma correlates with angiogenesis. *Hepatology* 2013;57:1416-25.
 49. Lewis CE, Pollard JW. Distinct role of macrophages in different tumor microenvironments. *Cancer Res* 2006;66:605-12.
 50. Venneri MA, De Palma M, Ponzoni M, et al. Identification of proangiogenic TIE2-expressing monocytes (TEMs) in human peripheral blood and cancer. *Blood* 2007;109:5276-85.
 51. Takai A, Dang HT, Wang XW. Identification of drivers from cancer genome diversity in hepatocellular carcinoma. *Int J Mol Sci* 2014;15:11142-60.
 52. Long J, Wang A, Bai Y, et al. Development and validation of a TP53-associated immune prognostic model for hepatocellular carcinoma. *EBioMedicine* 2019;42:363-74.
 53. Xu F, Jin T, Zhu Y, et al. Immune checkpoint therapy in liver cancer. *J Exp Clin Cancer Res* 2018;37:110.
 54. Gao Q, Wang XY, Qiu SJ, et al. Overexpression of PD-L1 significantly associates with tumor aggressiveness and postoperative recurrence in human hepatocellular carcinoma. *Clin Cancer Res* 2009;15:971-9.
 55. Mizukoshi E, Nakamoto Y, Arai K, et al. Comparative analysis of various tumor-associated antigen-specific t-cell responses in patients with hepatocellular carcinoma. *Hepatology* 2011;53:1206-16.

Cite this article as: Wang J, Li Y, Zhang C, Chen X, Zhu L, Luo T. Characterization of diagnostic and prognostic significance of cell cycle-linked genes in hepatocellular carcinoma. *Transl Cancer Res* 2021;10(11):4636-4651. doi: 10.21037/tcr-21-1145