



# Exploring the causal relationship between omega-3 and omega-6 fatty acids and kidney cancer: a Mendelian randomization study

Weifeng Liu<sup>#</sup>, Yufei Wang<sup>#</sup>, Yibin Zhou

Department of Urology, The Second Affiliated Hospital of Soochow University, Suzhou, China

**Contributions:** (I) Conception and design: W Liu, Y Zhou; (II) Administrative support: Y Zhou; (III) Provision of study materials or patients: W Liu, Y Wang; (IV) Collection and assembly of data: W Liu, Y Wang; (V) Data analysis and interpretation: W Liu, Y Wang; (VI) Manuscript writing: All authors; (VII) Final approval of manuscript: All authors.

<sup>#</sup>These authors contributed equally to this work.

**Correspondence to:** Yibin Zhou, MD, PhD. Department of Urology, The Second Affiliated Hospital of Soochow University, No. 1055 Sanxiang Road, Suzhou 215004, China. Email: 84853612@qq.com.

**Background:** The causal link between kidney cancer and omega-3/6 ( $\omega$ -3/6) fatty acids is yet to be clearly established. Therefore, the objective of our study was to investigate these potential causal relationships.

**Methods:** We conducted a two-sample Mendelian randomization (MR) analysis to investigate the possible causal association between  $\omega$ -3/6 fatty acids and kidney cancer. We utilized the random effect inverse variance weighted (IVW) method as our primary analytical approach for the two-sample MR analysis. In addition, sensitivity analyses such as heterogeneity tests, pleiotropy analyses, and leave-one-out analyses were performed to assess the robustness of the MR analysis results.

**Results:** The IVW method showed statistically significant associations between  $\omega$ -3 and  $\omega$ -6 fatty acids and increased risk of kidney cancer. The result for  $\omega$ -3 and  $\omega$ -6 were [odds ratio (OR) =1.27; 95% confidence interval (CI): 1.04–1.55; P=0.02] and (OR =1.56; 95% CI: 1.17–2.09; P=0.003), respectively. Moreover, in the results of sensitivity analyses, no apparent horizontal gene pleiotropy nor heterogeneity was observed. After performing “the leave-one-out” sensitivity analysis of the data one by one, no single nucleotide polymorphisms (SNPs) sites in each instrumental variable (IV) were found to have greatly affected the disease outcome.

**Conclusions:** Elevated serum  $\omega$ -3/6 fatty acids levels are causally associated with an increased risk of kidney cancer. Therefore, it is crucial to monitor dietary intake and properly intervene to lower these levels in those at risk of kidney cancer.

**Keywords:** Kidney cancer; omega-3 fatty acids ( $\omega$ -3 fatty acids); omega-6 fatty acids ( $\omega$ -6 fatty acids); causal relationship; Mendelian randomization (MR)

Submitted Nov 06, 2023. Accepted for publication Feb 29, 2024. Published online Apr 24, 2024.

doi: 10.21037/tcr-23-2058

**View this article at:** <https://dx.doi.org/10.21037/tcr-23-2058>

## Introduction

The polyunsaturated fatty acids (PUFAs), as part of the human diet, are seen as modifiable factors in lifestyle and may have an impact on cancer risk (1). Omega-3 ( $\omega$ -3) and omega-6 ( $\omega$ -6) are essential PUFA that play important roles in various physiological functions and have been linked to human health (2,3). The majority of studies indicate that

$\omega$ -3 fatty acid have a protective effect against cancer risk, such as colorectal cancer, breast cancer and prostate cancer (4-12), while the consumption of  $\omega$ -6 fatty acid may exacerbate this risk (13-16). However, there were few studies on the relationship between  $\omega$ -3 and  $\omega$ -6 fatty acids and kidney cancer.

Kidney cancer is a significant health concern worldwide, with it being one of the top ten most common cancers.

More than 300,000 new cases were diagnosed every year globally, and in 2020 alone, there were 431,288 new cases reported worldwide, of which 90% of kidney cancer were renal cell carcinoma (RCC) (17). Among them, clear cell renal cell carcinoma (ccRCC) is the predominant subtype of RCC, occupying 80% of RCC (18). Studies have shown that RCC, especially ccRCC, is generally considered as a metabolic disease. Among them, abnormal alterations in lipid metabolism have important effects in the occurrence and development of ccRCC (19–22). At present, a study found that ccRCC samples demonstrate increased levels of fatty acid desaturase 1 (FADS1), which is an essential enzyme involved in the metabolism of PUFAs (23). Moreover, another study has revealed that levels of PUFAs are elevated in ccRCC tumors compared to normal kidney tissues. And high-grade tumor specimens exhibit higher levels of PUFA-phospholipids than low-grade ones (24). Therefore, based on existing evidence, it can be inferred that the occurrence and progression of kidney cancer require a higher level of PUFAs. However, there is currently no specific research to definitively establish a causal relationship between PUFAs and kidney cancer.

To further explore the causality and strength of association between PUFAs and kidney cancer, we used Mendelian randomization (MR). The MR method was first introduced by Katan (25) in 1986, where genetic variation is utilized as an instrumental variable (IV) to evaluate the causal association between exposure and outcome. The underlying principal stemmed from Mendel's second law of inheritance, where alleles were randomly assigned and remained fixed at conception. This concept is similar to

traditional randomized controlled trials (RCTs), where patients were randomized to either a treatment or control group. This method eliminates confounding factors and reverse causality by leveraging the random distribution of genetic variation. It mimics the randomization process of RCTs and avoids potential confounders that may disrupt traditional RCTs (26). Therefore, it is extensively employed for exploring causal relationships. We present this article in accordance with the STROBE-MR reporting checklist (available at <https://tcr.amegroups.com/article/view/10.21037/tcr-23-2058/rc>).

## Methods

### Research design

The MR method was utilized in this research to acquire the association data with  $\omega$ -3/6 fatty acids levels (exposure factors) through the genome-wide association studies (GWAS) database, and to select the single nucleotide polymorphisms (SNPs) closely related to  $\omega$ -3/6. Then, the association data with kidney cancer (disease outcome) were obtained. Finally, five complementary MR methods were employed to analyze the potential causality between  $\omega$ -3/6 fatty acid levels and kidney cancer using SNPs that are closely associated with both variables as IVs. The study was conducted in accordance with the Declaration of Helsinki (as revised in 2013).

### Data sources

The GWAS data for  $\omega$ -3/6 fatty acids were derived from a meta-analysis of 114,999 participants in 2020 with a vast set of 12,321,875 SNPs; GWAS data for kidney cancer patients were derived from the FinnGen Consortium. A total of 971 cases of kidney cancer and 174,006 controls were included in this study. All summary data for association analyses can be accessed by the public on the database website (<https://gwas.mrcieu.ac.uk>) for further details.

### IVs selection

(I) R software was used to incorporate the screened SNPs sites with genome-wide significance based on the GWAS database; (II) the threshold for the LD parameter  $r^2$  was set at 0.001, with a genetic distance of 10,000 kb, SNPs were selected with  $P < 5 \times 10^{-8}$  to guarantee between IVs to exclude the influence of LD on the results; (III) to ensure that the SNPs used in the study were not associated with kidney cancer, the researchers

### Highlight box

#### Key findings

- Elevated serum omega-3/6 ( $\omega$ -3/6) fatty acids levels are causally associated with an increased risk of kidney cancer.

#### What is known and what is new?

- Previous studies have indicated the relationship between  $\omega$ -3/6 fatty acid and certain cancer.
- And this study further explores the relationship between  $\omega$ -3/6 fatty acids and kidney cancer.

#### What is the implication, and what should change now?

- This finding emphasizes the significance of closely monitoring the dietary intake of  $\omega$ -3/6 fatty acids and implementing appropriate interventions to lower their levels in individuals at high risk, with the aim of reducing the occurrence of kidney cancer.

retrieved the secondary phenotype of each SNP. We calculated the F value for each individual SNP and used the weak IVs bias test  $F = \beta^2 \text{exposure} / \text{SE}^2 \text{exposure}$  (27), where  $\beta$  is the effect size of the exposure allele, and SE is the standard error of the exposure; (IV) the data were preprocessed to keep their effect alleles and effect quantities unified.

### Statistical analysis

#### MR analysis

The research employed five different methods to estimate the causal effect between  $\omega$ -3/6 fatty acids and kidney cancer, which included the inverse-variance weighted (IVW) method (28), MR-Egger regression method (29), weighted median method (30), simple mode method (31), and weighted mode method. The principle of the IVW method is based on the assumption that all IVs are effective, and weights are assigned to each IV based on the inverse of its variance. This method is considered one of the most classical methods in MR analysis and has been widely used in research. The MR-Egger and IVW methods take into account the presence of pleiotropy in IVs by incorporating an intercept term in weighted regression analysis. The intercept term is used to evaluate the magnitude of pleiotropy among IVs, while the slope provides an estimate of causal effect. The simple mode method can be understood as a weighted median estimator with identical weights, but it is not very efficient when there are significant differences in estimation accuracy for different genetic variations. The weighted median approach addresses the issue of notable disparities in estimation precision, similar to the IVW method, which typically employs the inverse weight of variance for each genetic variation. In contrast, the simple mode method necessitates that a minimum of 50% of the genetic variations are effective IVs, whereas the weighted median approach only requires a minimum of 50% of the weights attributed to genetic variations to be effective. By using the weighted median approach and ensuring that at least half of the SNPs were valid, we achieved estimates that were consistent with the final effect through a weighted mode approach. The above methods used R software version 4.3.0, “TwoSampleMR” package version 0.5.6, and test level  $\alpha = 0.05$ .

#### Sensitivity analysis

Heterogeneity test is used mainly to test the difference between each IV. If there are significant differences between different IVs, then, heterogeneity would be larger. When significant heterogeneity ( $P < 0.05$ ) was present, the random-effects IVW model was utilized to estimate MR; otherwise, the fixed-effects IVW model was applied. Horizontal

pleiotropic test is used to mainly test whether there is horizontal pleiotropy between each IV. Horizontal pleiotropy is often indicated by the intercept term of the MR-Egger method. A small or near-zero intercept suggests the absence of horizontal pleiotropy. The leave-one-out sensitivity test involves calculating the combined effect of the remaining SNPs after removing one SNP at a time to assess their impact on the overall result. If there is little difference between the MR results obtained from the remaining SNPs analysis and those obtained from analyzing all SNPs, it indicates that the MR analysis is robust and not overly influenced by any single SNP.

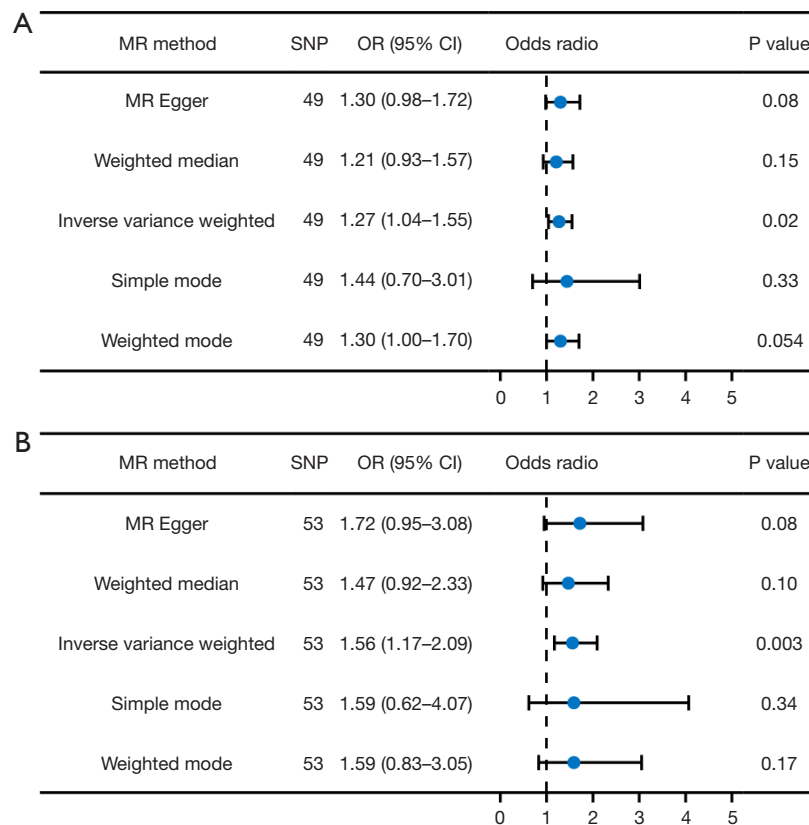
## Results

### IV

There were 49 SNPs associated with  $\omega$ -3 PUFA and kidney cancer (Table S1), and 53 SNPs were associated with  $\omega$ -6 PUFA and kidney cancer (Table S2). In the tables, CHR represents the chromosomal information of genes; EAF represents the effect allele frequency; EA/OA represents the allele;  $\beta$  is the effect size of  $\omega$ -3 or  $\omega$ -6 associated SNPs; SE is the standard error of  $\beta$  value; P value indicates the degree of association of SNP with  $\omega$ -3 or  $\omega$ -6. For a single SNP in this study, the corresponding F-statistic distribution ranged from 26.163 to 6,315.263 and 26.909 to 545.974, respectively, and all F-statistic were  $>10$ , which indicated that there were no weak IVs bias, indicating that the results were reliable.

#### MR analysis between $\omega$ -3/6 PUFAs and kidney cancer

After eliminating linkage disequilibrium, a total of 49 SNPs that demonstrated a strong association with both  $\omega$ -3 fatty acid and renal cancer were identified through screening, and the results of five MR analysis methods (IVW, MR-Egger, weighted median, simple mode, and weighted mode) were [odds ratio (OR) = 1.27; 95% confidence interval (CI): 1.04–1.55;  $P = 0.02$ ], (OR = 1.30; 95% CI: 0.98–1.72;  $P = 0.08$ ), (OR = 1.21, 95% CI: 0.93–1.57;  $P = 0.15$ ), (OR = 1.44; 95% CI: 0.70–3.01;  $P = 0.33$ ), (OR = 1.30, 95% CI: 1.00–1.70;  $P = 0.054$ ), respectively (Figure 1A). Using the same method as above, the results of five MR analysis methods including IVW, MR-Egger, weighted median, simple mode and weighted mode were (OR = 1.56; 95% CI: 1.17–2.09;  $P = 0.003$ ), (OR = 1.72; 95% CI: 0.95–3.08;  $P = 0.08$ ), (OR = 1.47; 95% CI: 0.92–2.33;  $P = 0.10$ ), (OR



**Figure 1** Forest plots of MR analysis. (A) Forest plot of MR analysis between omega-3 and kidney cancer. (B) Forest plot of MR analysis between omega-6 and kidney cancer. MR, Mendelian randomization; SNP, single nucleotide polymorphism; OR, odds ratio; CI, confidence interval.

=1.59; 95% CI: 0.62–4.07;  $P=0.34$ ), (OR =1.59; 95% CI: 0.83–3.05;  $P=0.17$ ), respectively (Figure 1B). Among them, the IVW method was the primary analysis method for MR, and its results indicated a positive correlation between  $\omega$ -3/6 fatty acids and kidney cancer, suggesting a causal relationship. According to the results of the IVW method, an increase of one standard deviation in  $\omega$ -3 fatty acids level was associated with a 27% increase in the prevalence of kidney cancer (Figure 2A), while an increase of one standard deviation in  $\omega$ -6 fatty acids level was associated with a 56% increase (Figure 2B).

### Sensitivity analyses

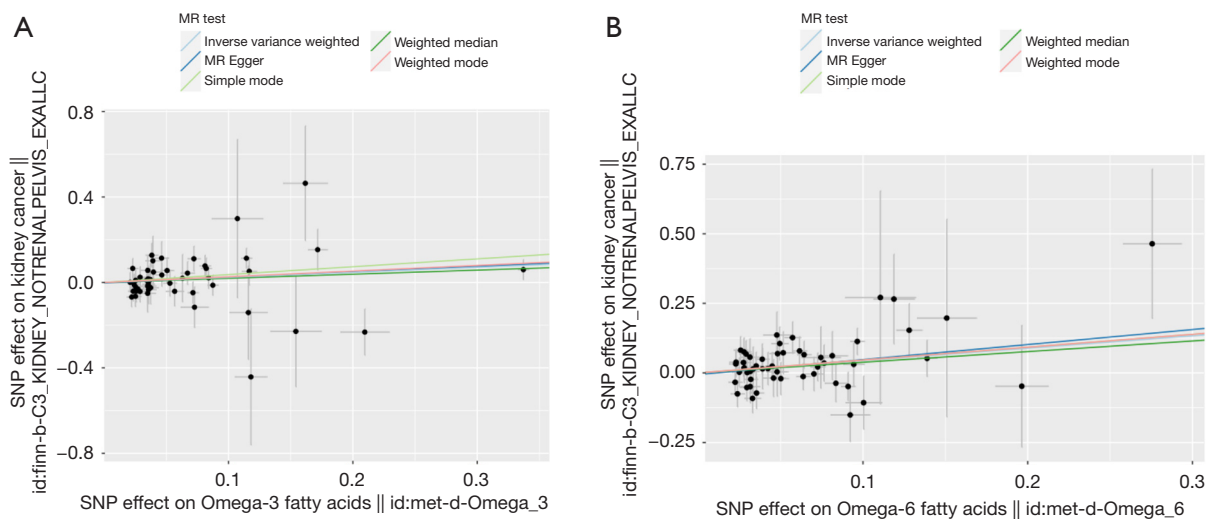
#### Heterogeneity test

The results of heterogeneity test of 49 SNP IVs, MR-Egger regression, IVW method indicated no heterogeneity in each IV [ $P>0.05$  ( $P=0.43$ ,  $P=0.46$ )], thus we used the fixed-effect model to estimate the MR effect quantity. The results of the

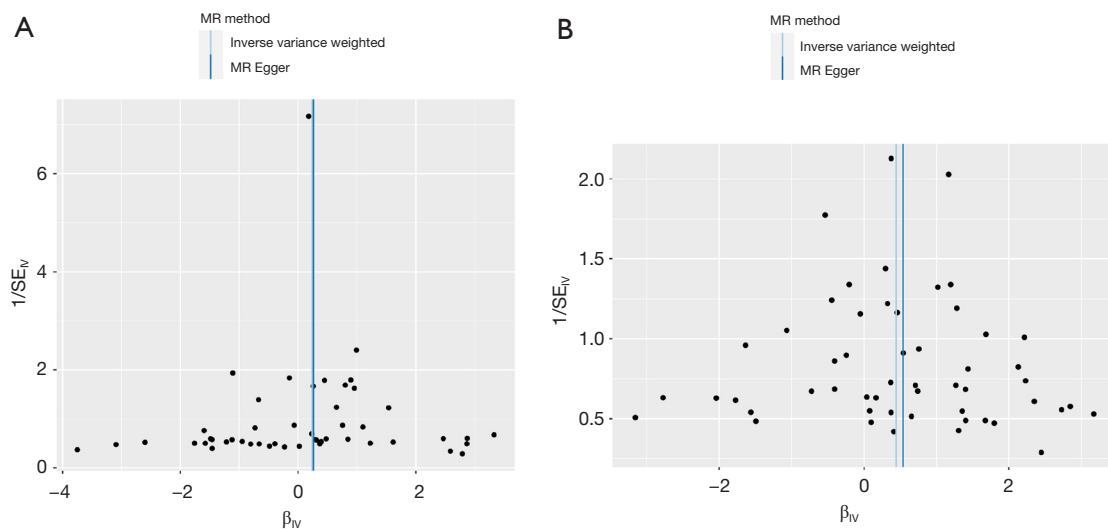
fixed-effect model showed that the OR values and 95% CI were both  $>1$ , and  $P<0.05$  (OR =1.27; 95% CI: 1.04–1.55;  $P=0.02$ ), demonstrating significant statistical significance, indicating a positive causal relationship between higher  $\omega$ -3 fatty acids and the incidence of kidney cancer in the general population. By applying the same method mentioned above, the results indicated that there was no heterogeneity in MR SNPs between  $\omega$ -6 fatty acids and kidney cancer [ $P>0.05$  ( $P=0.47$ ,  $P=0.50$ )]. The results obtained from the fixed-effect model further confirm a causal link between  $\omega$ -6 fatty acids and kidney cancer (OR =1.56; 95% CI: 1.17–2.09;  $P=0.003$ ).

#### Horizontal pleiotropy

The MR-Egger intercept between  $\omega$ -3 PUFA and kidney cancer indicated that the intercept term was approximately 0,  $P>0.05$  (intercept term =-0.003,  $P=0.82$ ). The MR-Egger intercept between  $\omega$ -6 PUFA and kidney cancer had the same result, with an intercept term also close to 0,  $P>0.05$  (intercept term =-0.006,  $P=0.72$ ). These findings imply



**Figure 2** Scatter plots of MR analysis. (A) Scatter plot of MR analysis between omega-3 fatty acids and kidney cancer. (B) Scatter plot of MR analysis between omega-6 fatty acids and kidney cancer. MR, Mendelian randomization; SNP, single nucleotide polymorphism.



**Figure 3** Funnel plots for MR analysis. (A) Funnel plot of MR analysis of omega-3 with kidney cancer. (B) Funnel plot of MR analysis of omega-6 with kidney cancer. MR, Mendelian randomization; SE, standard error.

that the results of this study are not affected by horizontal pleiotropy, which is a reassuring indication of the reliability of the data. Furthermore, the analysis of the funnel plot demonstrates that when using SNPs as IVs individually, the scatter of causal association effects appears to be distributed symmetrically, indicating the absence of potential bias in the results (Figure 3).

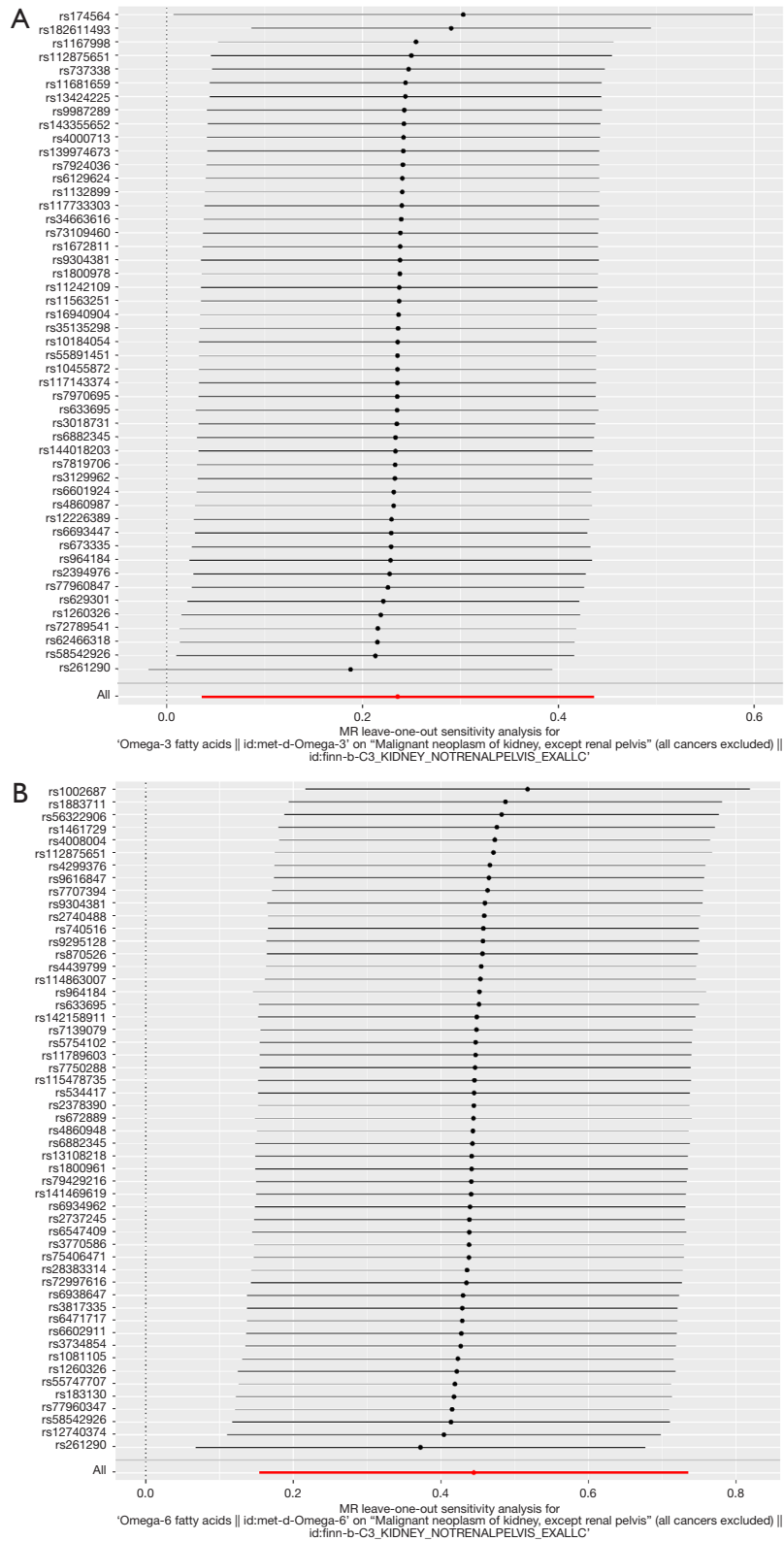
**Leave-one-out analysis**

After performing “the leave-one-out” sensitivity analysis of the data one by one, no SNPs sites in each IV were found to

have greatly affected the disease outcome, and the analysis showed the robustness of MR results (Figure 4).

**Discussion**

In this research, a comprehensive GWAS database was utilized to discover 49 SNPs that have a strong association with both ω-3 PUFA and kidney cancer, along with 53 SNPs that have a significant correlation with both ω-6 PUFA and kidney cancer. To explore the cause-and-effect



**Figure 4** Result of leave-one-out sensitivity analysis. (A) Result of leave-one-out sensitivity analysis of omega-3. (B) Result of leave-one-out sensitivity analysis of omega-6. MR, Mendelian randomization.



connection between these factors, five complementary MR methods were employed. The results implied that there is a potential association between  $\omega$ -3/6 fatty acids levels and kidney cancer, indicating that higher levels of  $\omega$ -3/6 fatty acids could increase the chances of developing kidney cancer. This highlights the importance of monitoring dietary intake of  $\omega$ -3/6 fatty acids to reduce the risk of kidney cancer.

There are several existing findings that could explain our results. Firstly, RCC possesses certain characteristics that set it apart from other types of cancer, with metabolism being the most prominent (32). One prominent character of RCC is the mutation of key genes involved in metabolic pathways. These mutations involve regulatory genes that were associated with aerobic glycolysis, lipid metabolism, and tryptophan metabolism (19,33-36). The mutations of these genes directly affect the metabolic processes of RCC cells, and changes in oxygen, energy, and nutrient metabolism pathways play a crucial role in the occurrence and development of RCC (33,37,38). Secondly, the key enzyme FADS1, involved in the metabolism of PUFAs, was found to be upregulated in ccRCC tissues (23). In addition, another study demonstrated that the levels of PUFAs were elevated in ccRCC compared to normal kidney tissue. Furthermore, the levels of PUFA-phospholipids were higher in high-grade tumor specimens than in low-grade tumor specimens (24). Thirdly, PUFAs play a critical role in various cell functions, including serving as essential components of cell membranes and impacting membrane fluidity. They also function as active molecules in cell signaling, inflammation, and cell death processes (39). PUFAs have been found to be associated with various and metabolic diseases, such as coronary heart disease, obesity, and malignant tumors, etc. (1,4,40). We know that kidney cancer, especially ccRCC, has been widely recognized as a metabolic disease. Therefore, based on the above studies, we believe that high levels of PUFAs are closely related to the occurrence and development of kidney cancer.

In addition, we believed that PUFAs were not only associated with the risk of kidney cancer, but also possibly related to its treatment and prognosis. Several recent studies collectively suggested that metabolic factors such as abnormal body fat, abnormal blood lipids, and abnormal local lipid metabolism in tumors were closely related to the occurrence and development of kidney cancer. The high or low levels of these factors were not only associated with the risk of kidney cancer, but can also be used to judge the prognosis of patients with kidney cancer (41-43). For

example, it was known that there was a correlation between high body mass index (BMI) levels and an increased risk of kidney cancer (43). A meta-analysis showed that in RCC patients after undergoing nephrectomy, for every 5 kg/m<sup>2</sup> increase in BMI, their specific risk of RCC mortality decreased by 34% (44). Furthermore, in metastatic RCC (mRCC) patients treated with immunoncological (IO) drugs, another meta-analysis also showed that a higher BMI was associated with better survival (45). In addition, research by Van Hemelrijck *et al.* showed that the serum total cholesterol (TC) level was negatively associated with the incidence of RCC, and a lower level indicated a worse prognosis for RCC patients (46). At the same time, significant progress has been made in targeting lipid metabolism for kidney cancer treatment. Hypoxia-induced factor (HIF) played a crucial role in the pathophysiology of ccRCC, and they could influence tumorigenesis of ccRCC by controlling fatty acid metabolism (47). Multiple clinical trial studies have shown that the HIF-2 $\alpha$  inhibitor MK-6482 and another HIF-2 $\alpha$  antagonist PT2399 demonstrated significant therapeutic effects and good safety profiles in patients with ccRCC, making them potential treatment options for this type of cancer (48,49). In a population-based cohort study, the use of statin medications was found to lower the risk of RCC, with a risk ratio of 0.64 (95% CI: 0.38-0.87) (50). Further research has indicated that statin drugs can inhibit the growth of RCC cells by inducing cell cycle arrest and apoptosis in a dose and time-dependent manner (51). Therefore, based on the above studies, we believe that  $\omega$ -3/6 fatty acids are not only associated with the risk of kidney cancer occurrence, but also related to its prognosis. However, more research is needed to confirm this, which will be the direction of our future studies.

This study had several notable strengths. Firstly, we provided novel insights into the causal relationship between  $\omega$ -3/6 fatty acids and kidney cancer by utilizing MR analysis for the first time. Secondly, we implemented rigorous quality control measures and analysis methods, utilizing five complementary MR analytical techniques to explore the causal effect while also employing three different sensitivity analyses to ensure that our results were robust. Thirdly, by using MR methods, we were able to minimize the impact of confounding factors or reverse causality on our findings.

There are several limitations to consider regarding this study. Firstly, the sample population used in the research consisted solely of individuals of European ancestry. To expand upon our findings, it will be essential to include samples from Asia and Africa in future studies. Additionally,

the exact mechanism through which  $\omega$ -3/6 fatty acids increases kidney cancer incidence remains unclear, and further research is necessary to verify our hypothesis.

## Conclusions

In conclusion, the results of our study suggest that there is a causal relationship between elevated serum levels of  $\omega$ -3 and  $\omega$ -6 fatty acids and an increased risk of kidney cancer. Specifically, individuals with higher serum levels of these fatty acids are at an increased risk for developing kidney cancer. This finding highlights the importance of monitoring dietary intake these fatty acids, as well as considering proper interventions to reduce their levels in high-risk individuals to reduce the incidence of kidney cancer.

## Acknowledgments

The authors express their gratitude to all the investigators for generously sharing their valuable data.

*Funding:* None.

## Footnote

*Reporting Checklist:* The authors have completed the STROBE-MR reporting checklist. Available at <https://tcr.amegroups.com/article/view/10.21037/tcr-23-2058/rc>

*Peer Review File:* Available at <https://tcr.amegroups.com/article/view/10.21037/tcr-23-2058/prf>

*Conflicts of Interest:* All authors have completed the ICMJE uniform disclosure form (available at <https://tcr.amegroups.com/article/view/10.21037/tcr-23-2058/coif>). The authors have no conflicts of interest to declare.

*Ethical Statement:* The authors are accountable for all aspects of the work in ensuring that questions related to the accuracy or integrity of any part of the work are appropriately investigated and resolved. The study was conducted in accordance with the Declaration of Helsinki (as revised in 2013).

*Open Access Statement:* This is an Open Access article distributed in accordance with the Creative Commons Attribution-NonCommercial-NoDerivs 4.0 International License (CC BY-NC-ND 4.0), which permits the non-

commercial replication and distribution of the article with the strict proviso that no changes or edits are made and the original work is properly cited (including links to both the formal publication through the relevant DOI and the license). See: <https://creativecommons.org/licenses/by-nc-nd/4.0/>.

## References

1. Chilton FH, Murphy RC, Wilson BA, et al. Diet-gene interactions and PUFA metabolism: a potential contributor to health disparities and human diseases. *Nutrients* 2014;6:1993-2022.
2. Downie LE, Ng SM, Lindsley KB, et al. Omega-3 and omega-6 polyunsaturated fatty acids for dry eye disease. *Cochrane Database Syst Rev* 2019;12:CD011016.
3. Brown TJ, Brainard J, Song F, et al. Omega-3, omega-6, and total dietary polyunsaturated fat for prevention and treatment of type 2 diabetes mellitus: systematic review and meta-analysis of randomised controlled trials. *BMJ* 2019;366:l4697.
4. Zheng JS, Hu XJ, Zhao YM, et al. Intake of fish and marine n-3 polyunsaturated fatty acids and risk of breast cancer: meta-analysis of data from 21 independent prospective cohort studies. *BMJ* 2013;346:f3706.
5. Wang J, Zhang Y, Zhao L. Omega-3 PUFA intake and the risk of digestive system cancers: A meta-analysis of observational studies. *Medicine (Baltimore)* 2020;99:e20119.
6. Aglago EK, Huybrechts I, Murphy N, et al. Consumption of Fish and Long-chain n-3 Polyunsaturated Fatty Acids Is Associated With Reduced Risk of Colorectal Cancer in a Large European Cohort. *Clin Gastroenterol Hepatol* 2020;18:654-666.e6.
7. Wu S, Liang J, Zhang L, et al. Fish consumption and the risk of gastric cancer: systematic review and meta-analysis. *BMC Cancer* 2011;11:26.
8. Kim M, Park K. Dietary Fat Intake and Risk of Colorectal Cancer: A Systematic Review and Meta-Analysis of Prospective Studies. *Nutrients* 2018;10:1963.
9. Kim Y, Kim J. Intake or Blood Levels of n-3 Polyunsaturated Fatty Acids and Risk of Colorectal Cancer: A Systematic Review and Meta-analysis of Prospective Studies. *Cancer Epidemiol Biomarkers Prev* 2020;29:288-99.
10. Nguyen S, Li H, Yu D, et al. Dietary fatty acids and colorectal cancer risk in men: A report from the Shanghai Men's Health Study and a meta-analysis. *Int J Cancer* 2021;148:77-89.



11. Farrell SW, DeFina LF, Tintle NL, et al. Association of the Omega-3 Index with Incident Prostate Cancer with Updated Meta-Analysis: The Cooper Center Longitudinal Study. *Nutrients* 2021;13:384.
12. Lee KH, Seong HJ, Kim G, et al. Consumption of Fish and  $\omega$ -3 Fatty Acids and Cancer Risk: An Umbrella Review of Meta-Analyses of Observational Studies. *Adv Nutr* 2020;11:1134-49.
13. Fan YY, Davidson LA, Callaway ES, et al. Differential effects of 2- and 3-series E-prostaglandins on in vitro expansion of Lgr5+ colonic stem cells. *Carcinogenesis* 2014;35:606-12.
14. Yang P, Chan D, Felix E, et al. Formation and antiproliferative effect of prostaglandin E(3) from eicosapentaenoic acid in human lung cancer cells. *J Lipid Res* 2004;45:1030-9.
15. Szymczak M, Murray M, Petrovic N. Modulation of angiogenesis by omega-3 polyunsaturated fatty acids is mediated by cyclooxygenases. *Blood* 2008;111:3514-21.
16. Diggle CP. In vitro studies on the relationship between polyunsaturated fatty acids and cancer: tumour or tissue specific effects? *Prog Lipid Res* 2002;41:240-53.
17. Sung H, Ferlay J, Siegel RL, et al. Global Cancer Statistics 2020: GLOBOCAN Estimates of Incidence and Mortality Worldwide for 36 Cancers in 185 Countries. *CA Cancer J Clin* 2021;71:209-49.
18. Doh L, Curtis AE, Teh BS. Renal-cell carcinoma. *N Engl J Med* 2006;354:1095-6; author reply 1095-6.
19. Lucarelli G, Loizzo D, Franzin R, et al. Metabolomic insights into pathophysiological mechanisms and biomarker discovery in clear cell renal cell carcinoma. *Expert Rev Mol Diagn* 2019;19:397-407.
20. di Meo NA, Lasorsa F, Rutigliano M, et al. Renal Cell Carcinoma as a Metabolic Disease: An Update on Main Pathways, Potential Biomarkers, and Therapeutic Targets. *Int J Mol Sci* 2022;23:14360.
21. De Marco S, Torsello B, Minutiello E, et al. The cross-talk between Abl2 tyrosine kinase and TGF $\beta$ 1 signalling modulates the invasion of clear cell Renal Cell Carcinoma cells. *FEBS Lett* 2023;597:1098-113.
22. di Meo NA, Lasorsa F, Rutigliano M, et al. The dark side of lipid metabolism in prostate and renal carcinoma: novel insights into molecular diagnostic and biomarker discovery. *Expert Rev Mol Diagn* 2023;23:297-313.
23. Saito K, Arai E, Maekawa K, et al. Lipidomic Signatures and Associated Transcriptomic Profiles of Clear Cell Renal Cell Carcinoma. *Sci Rep* 2016;6:28932.
24. Zou Y, Palte MJ, Deik AA, et al. A GPX4-dependent cancer cell state underlies the clear-cell morphology and confers sensitivity to ferroptosis. *Nat Commun* 2019;10:1617.
25. Katan MB. Apolipoprotein E isoforms, serum cholesterol, and cancer. *Lancet* 1986;1:507-8.
26. Lawlor DA, Harbord RM, Sterne JA, et al. Mendelian randomization: using genes as instruments for making causal inferences in epidemiology. *Stat Med* 2008;27:1133-63.
27. Huang W, Xiao J, Ji J, et al. Association of lipid-lowering drugs with COVID-19 outcomes from a Mendelian randomization study. *Elife* 2021;10:e73873.
28. Burgess S, Butterworth A, Thompson SG. Mendelian randomization analysis with multiple genetic variants using summarized data. *Genet Epidemiol* 2013;37:658-65.
29. Bowden J, Davey Smith G, Burgess S. Mendelian randomization with invalid instruments: effect estimation and bias detection through Egger regression. *Int J Epidemiol* 2015;44:512-25.
30. Bowden J, Davey Smith G, Haycock PC, et al. Consistent Estimation in Mendelian Randomization with Some Invalid Instruments Using a Weighted Median Estimator. *Genet Epidemiol* 2016;40:304-14.
31. Hartwig FP, Davey Smith G, Bowden J. Robust inference in summary data Mendelian randomization via the zero modal pleiotropy assumption. *Int J Epidemiol* 2017;46:1985-98.
32. Qi X, Li Q, Che X, et al. The Uniqueness of Clear Cell Renal Cell Carcinoma: Summary of the Process and Abnormality of Glucose Metabolism and Lipid Metabolism in ccRCC. *Front Oncol* 2021;11:727778.
33. Bianchi C, Meregalli C, Bombelli S, et al. The glucose and lipid metabolism reprogramming is grade-dependent in clear cell renal cell carcinoma primary cultures and is targetable to modulate cell viability and proliferation. *Oncotarget* 2017;8:113502-15.
34. Ragone R, Sallustio F, Piccinonna S, et al. Renal Cell Carcinoma: A Study through NMR-Based Metabolomics Combined with Transcriptomics. *Diseases* 2016;4:7.
35. Lucarelli G, Galleggiante V, Rutigliano M, et al. Metabolomic profile of glycolysis and the pentose phosphate pathway identifies the central role of glucose-6-phosphate dehydrogenase in clear cell-renal cell carcinoma. *Oncotarget* 2015;6:13371-86.
36. Lucarelli G, Rutigliano M, Loizzo D, et al. MUC1 Tissue Expression and Its Soluble Form CA15-3 Identify a Clear Cell Renal Cell Carcinoma with Distinct Metabolic Profile and Poor Clinical Outcome. *Int J Mol Sci* 2022;23:13968.

37. Tan SK, Hougen HY, Merchan JR, et al. Fatty acid metabolism reprogramming in ccRCC: mechanisms and potential targets. *Nat Rev Urol* 2023;20:48-60.
38. Lucarelli G, Rutigliano M, Sallustio F, et al. Integrated multi-omics characterization reveals a distinctive metabolic signature and the role of NDUFA4L2 in promoting angiogenesis, chemoresistance, and mitochondrial dysfunction in clear cell renal cell carcinoma. *Aging (Albany NY)* 2018;10:3957-85.
39. Heravi G, Yazdanpanah O, Podgorski I, et al. Lipid metabolism reprogramming in renal cell carcinoma. *Cancer Metastasis Rev* 2022;41:17-31.
40. D'Angelo S, Motti ML, Meccariello R.  $\omega$ -3 and  $\omega$ -6 Polyunsaturated Fatty Acids, Obesity and Cancer. *Nutrients* 2020;12:2751.
41. Bombelli S, Torsello B, De Marco S, et al. 36-kDa Annexin A3 Isoform Negatively Modulates Lipid Storage in Clear Cell Renal Cell Carcinoma Cells. *Am J Pathol* 2020;190:2317-26.
42. Wilson KM, Cho E. Obesity and Kidney Cancer. *Recent Results Cancer Res* 2016;208:81-93.
43. Bukavina L, Bensalah K, Bray F, et al. Epidemiology of Renal Cell Carcinoma: 2022 Update. *Eur Urol* 2022;82:529-42.
44. Choi Y, Park B, Jeong BC, et al. Body mass index and survival in patients with renal cell carcinoma: a clinical-based cohort and meta-analysis. *Int J Cancer* 2013;132:625-34.
45. Takemura K, Yonekura S, Downey LE, et al. Impact of Body Mass Index on Survival Outcomes of Patients with Metastatic Renal Cell Carcinoma in the Immuno-oncology Era: A Systematic Review and Meta-analysis. *Eur Urol Open Sci* 2022;39:62-71. Erratum in: *Eur Urol Open Sci* 2022;48:17.
46. Van Hemelrijck M, Garmo H, Hammar N, et al. The interplay between lipid profiles, glucose, BMI and risk of kidney cancer in the Swedish AMORIS study. *Int J Cancer* 2012;130:2118-28.
47. Du W, Zhang L, Brett-Morris A, et al. HIF drives lipid deposition and cancer in ccRCC via repression of fatty acid metabolism. *Nat Commun* 2017;8:1769.
48. Hasanov E, Jonasch E. MK-6482 as a potential treatment for von Hippel-Lindau disease-associated clear cell renal cell carcinoma. *Expert Opin Investig Drugs* 2021;30:495-504.
49. Chen W, Hill H, Christie A, et al. Targeting renal cell carcinoma with a HIF-2 antagonist. *Nature* 2016;539:112-7.
50. Chou YC, Lin CH, Wong CS, et al. Statin use and the risk of renal cell carcinoma: national cohort study. *J Investig Med* 2020;68:776-81.
51. Santoni M, Monteiro FSM, Massari F, et al. Statins and renal cell carcinoma: Antitumor activity and influence on cancer risk and survival. *Crit Rev Oncol Hematol* 2022;176:103731.

**Cite this article as:** Liu W, Wang Y, Zhou Y. Exploring the causal relationship between omega-3 and omega-6 fatty acids and kidney cancer: a Mendelian randomization study. *Transl Cancer Res* 2024;13(4):1685-1694. doi: 10.21037/tcr-23-2058

**Table S1** 49 SNPs were associated with omega-3 PUFA and kidney cancer

SNP	CHR	EA	OA	EAF	$\beta$	SE	P value	F-statistic
rs9987289	2	G	C	0.224	-0.036	0.005	5.60015E-15	55.192
rs964184	6	G	A	0.079	-0.063	0.008	2.80027E-17	69.824
rs9304381	5	T	G	0.479	0.024	0.004	2.39999E-09	35.025
rs7970695	8	A	G	0.392	-0.087	0.004	3.50026E-98	428.664
rs7924036	19	C	T	0.510	0.027	0.004	8.60003E-11	43.595
rs7819706	2	T	C	0.111	0.035	0.006	0.000000032	29.175
rs77960347	1	A	C	0.645	0.071	0.004	3.59998E-66	281.853
rs737338	2	T	C	0.716	-0.025	0.004	0.00000002	31.370
rs73109460	21	C	T	0.142	-0.037	0.006	2.19999E-10	40.253
rs72789541	6	G	A	0.019	-0.116	0.015	1.39991E-15	59.170
rs6882345	11	C	T	0.186	-0.051	0.005	1.10002E-22	92.979
rs673335	2	C	T	0.604	-0.082	0.004	8.4004E-88	390.344
rs6693447	2	T	G	0.450	0.022	0.004	2.19999E-08	29.326
rs6601924	15	C	T	0.026	0.118	0.013	2.29985E-21	84.867
rs633695	11	T	C	0.010	-0.154	0.020	9.3994E-14	57.049
rs629301	11	C	G	0.011	0.107	0.020	4.20001E-08	27.338
rs62466318	16	C	T	0.748	0.025	0.005	2.99999E-08	28.754
rs6129624	17	T	C	0.227	-0.036	0.005	3.90032E-14	53.066
rs58542926	11	G	A	0.347	-0.337	0.004	1E-200	6315.263
rs55891451	9	G	C	0.124	-0.037	0.006	5.19996E-09	36.341
rs4860987	6	T	G	0.162	-0.046	0.006	1.20005E-15	70.172
rs4000713	15	C	T	0.655	-0.114	0.004	3.8994E-161	713.595
rs35135293	11	G	A	0.718	-0.035	0.005	1.99986E-14	59.889
rs34663616	6	A	G	0.130	-0.039	0.006	1.79999E-09	42.162
rs3129962	6	A	G	0.130	-0.039	0.006	1.79999E-09	42.162
rs3018731	2	T	C	0.517	-0.021	0.004	3.89996E-08	26.163
rs261290	7	A	G	0.295	-0.029	0.004	1E-11	41.747
rs2394976	4	T	A	0.259	0.046	0.005	1.20005E-21	89.089
rs182611493	19	G	C	0.534	0.048	0.004	9.09913E-30	118.974
rs1800978	10	C	A	0.202	0.034	0.005	4.60045E-12	45.271
rs174564	19	T	C	0.074	-0.172	0.008	1.3996E-113	490.350
rs16940904	20	A	G	0.335	-0.026	0.004	5.1E-10	34.600
rs1672811	7	T	C	0.204	-0.072	0.005	1.20005E-45	202.922
rs144018203	1	T	G	0.778	0.038	0.005	1.29987E-14	61.463
rs143355652	15	G	A	0.292	0.084	0.004	9.09913E-80	351.170
rs139974673	10	C	T	0.846	0.035	0.006	8.50002E-10	38.661
rs13424225	1	G	T	0.462	0.023	0.004	4.79999E-09	31.673
rs1260326	11	C	T	0.160	-0.067	0.006	1.10002E-34	146.183
rs12226389	5	A	G	0.633	0.029	0.004	1.9002E-13	47.036
rs117733303	16	A	T	0.296	-0.081	0.004	5.60015E-75	330.551
rs117143374	7	A	G	0.124	-0.035	0.006	9.20005E-10	31.609
rs11681659	19	T	C	0.035	-0.073	0.011	3.50026E-11	43.356
rs1167998	18	G	A	0.013	0.162	0.018	7.19946E-22	82.971
rs11563251	8	G	A	0.118	-0.040	0.006	1.79999E-10	39.741
rs1132899	10	T	G	0.504	0.023	0.004	5.49997E-10	33.011
rs112875651	12	A	G	0.621	-0.025	0.004	1.2E-10	36.366
rs11242109	18	T	C	0.818	0.053	0.005	5.19996E-24	100.394
rs10455872	11	C	G	0.867	-0.117	0.006	8.9002E-87	382.338
rs10184054	8	G	A	0.909	0.057	0.007	3.19963E-16	64.281

**Table S2** 53 SNPs were associated with omega-6 PUFA and kidney cancer

SNP	CHR	EA	OA	EAF	$\beta$	SE	P value	F-statistic
rs964184	11	C	G	0.867	-0.139	0.006	1.099E-125	545.974
rs9616847	22	T	A	0.388	0.024	0.004	1.40001E-08	32.813
rs9304381	18	T	C	0.818	0.070	0.005	7.19946E-42	179.918
rs9295128	6	T	G	0.017	-0.196	0.016	3.40017E-36	151.501
rs870526	2	T	C	0.521	-0.032	0.004	7.70016E-16	62.328
rs79429216	19	A	G	0.013	0.151	0.018	1.29987E-17	70.509
rs77960347	18	G	A	0.013	0.276	0.018	2.80027E-56	244.633
rs7750288	6	G	A	0.285	0.025	0.004	1.29999E-08	31.188
rs7707394	5	A	G	0.357	0.030	0.004	1.20005E-12	49.309
rs75406471	10	A	G	0.155	-0.031	0.006	2.69998E-08	31.560
rs740516	17	G	C	0.151	-0.032	0.006	1.40001E-08	31.127
rs72997616	11	A	C	0.094	-0.052	0.007	1.59993E-13	55.159
rs7139079	12	A	G	0.593	-0.030	0.004	3.29989E-13	52.215
rs6938647	6	C	A	0.782	-0.048	0.005	1.9002E-23	94.738
rs6934962	6	T	C	0.400	0.023	0.004	2.19999E-08	30.808
rs6882345	5	A	G	0.633	0.045	0.004	1.20005E-27	115.324
rs672889	2	G	T	0.860	0.076	0.006	1.29987E-41	173.181
rs6602911	13	T	C	0.360	0.026	0.004	1.29999E-09	37.579
rs6547409	2	T	C	0.051	-0.081	0.009	2.39994E-20	77.380
rs6471717	8	A	G	0.663	-0.029	0.004	4.00037E-12	46.053
rs633695	15	G	A	0.292	0.073	0.004	1.29987E-59	265.507
rs58542926	19	T	C	0.074	-0.128	0.008	2.49977E-65	277.425
rs5754102	22	A	C	0.183	-0.032	0.005	9.90011E-10	35.894
rs56322906	19	A	G	0.035	-0.100	0.011	1.20005E-19	83.880
rs55747707	7	A	G	0.204	-0.049	0.005	1.69981E-22	97.031
rs534417	1	G	A	0.875	0.039	0.006	9.30037E-11	41.253
rs4860948	4	A	T	0.244	0.028	0.005	1.89998E-09	35.146
rs4439799	17	T	C	0.502	0.022	0.004	1.29999E-08	30.720
rs4299376	2	T	G	0.676	-0.035	0.004	1.10002E-16	67.120
rs4008004	9	A	C	0.222	0.033	0.005	8.4004E-12	45.702
rs3817335	11	A	T	0.351	-0.028	0.004	9.79941E-12	43.389
rs3770586	2	T	C	0.484	-0.023	0.004	7.10003E-09	32.135
rs3734854	6	A	G	0.065	0.048	0.008	5.90065E-11	33.745
rs28383314	6	C	T	0.623	0.039	0.004	1.69981E-18	87.240
rs2740488	9	C	A	0.265	-0.050	0.005	5.40008E-28	119.862
rs2737245	8	T	G	0.279	-0.027	0.005	1.40001E-09	37.150
rs261290	15	C	T	0.655	-0.097	0.004	1E-116	515.868
rs2378390	20	A	G	0.141	-0.033	0.006	3.2E-09	32.804
rs1883711	20	C	G	0.031	0.092	0.012	3.19963E-16	60.576
rs183130	16	T	C	0.324	0.062	0.004	1.39991E-48	203.580
rs1800961	20	T	C	0.030	-0.074	0.012	3.29997E-10	39.942
rs1461729	8	G	A	0.899	0.084	0.007	2.80027E-36	155.206
rs142158911	19	A	G	0.117	-0.094	0.006	5.19996E-52	223.269
rs141469619	11	G	A	0.010	0.111	0.021	1.40001E-08	26.909
rs13108218	4	G	A	0.615	-0.035	0.004	3.59998E-18	70.918
rs12740374	1	T	G	0.221	-0.057	0.005	1.50003E-32	139.195
rs1260326	2	C	T	0.604	-0.064	0.004	3.90032E-55	242.997
rs11789603	9	T	C	0.109	0.048	0.006	9.70063E-14	54.416
rs115478735	9	T	A	0.183	0.042	0.005	2.19989E-17	65.682
rs114863007	6	A	G	0.095	-0.046	0.007	7.29962E-12	43.540
rs112875651	8	A	G	0.392	-0.064	0.004	2.19989E-53	231.270
rs1081105	19	C	A	0.028	0.119	0.012	1.80011E-22	92.766
rs1002687	1	A	G	0.645	0.091	0.004	1E-107	466.283