



Brain metastases, patterns of intracranial progression, and the clinical value of upfront cranial radiotherapy in patients with metastatic non-small cell lung cancer treated with PD-1/PD-L1 inhibitors

Tiantian Guo^{1,2}, Li Chu^{1,2}, Xiao Chu^{1,2}, Xi Yang^{1,2}, Yida Li^{1,2}, Yue Zhou^{1,2}, Dayu Xu^{1,2}, Jinmeng Zhang^{1,2}, Shengping Wang^{2,3}, Jie Hu⁴, Qian Chu⁵, Teresa Moran^{6,7}, William Chi-Shing Cho⁸, Kenneth W. Merrell⁹, Stefania Rizzo¹⁰, Yanfei Liu^{2,11}, Jianjiao Ni^{1,2}, Zhengfei Zhu^{1,2,12}

¹Department of Radiation Oncology, Fudan University Shanghai Cancer Center, Shanghai, China; ²Department of Oncology, Shanghai Medical College, Fudan University, Shanghai, China; ³Department of Radiology, Fudan University Shanghai Cancer Center, Shanghai, China; ⁴Department of Pulmonary Medicine, Zhongshan Hospital, Fudan University, Shanghai, China; ⁵Department of Oncology, Tongji Hospital, Tongji Medical College, Huazhong University of Science and Technology, Wuhan, China; ⁶Medical Oncology Department, Catalan Institute of Oncology, Hospital Universitari Germans Trias i Pujol, Badalona Applied Research Group in Oncology, Badalona, Spain; ⁷Department of Medicine, Universitat Autònoma de Barcelona, Badalona, Spain; ⁸Department of Clinical Oncology, Queen Elizabeth Hospital, Hong Kong, China; ⁹Department of Radiation Oncology, Mayo Clinic, Rochester, MN, USA; ¹⁰Imaging Institute of the Southern Switzerland (IIMSI), Ente Ospedaliero Cantonale (EOC), Università della Svizzera italiana, Lugano, Switzerland; ¹¹Office of Clinical Research, Fudan University Shanghai Cancer Center, Shanghai, China; ¹²Institute of Thoracic Oncology, Fudan University, Shanghai, China

Contributions: (I) Conception and design: Z Zhu, J Ni, Y Liu, T Guo; (II) Administrative support: Z Zhu, J Ni, Y Liu; (III) Provision of study materials or patients: L Chu, X Yang, X Chu, J Hu, Q Chu; (IV) Collection and assembly of data: T Guo, L Chu, X Chu, X Yang, Y Li, Y Zhou, D Xu, J Zhang, S Wang, J Hu, Q Chu; (V) Data analysis and interpretation: T Guo; (VI) Manuscript writing: All authors; (VII) Final approval of manuscript: All authors.

Correspondence to: Yanfei Liu, MN. Office of Clinical Research, Fudan University Shanghai Cancer Center, 270 Dong An Road, Shanghai, China. Email: liuyanfei@fudan.edu.cn; Jianjiao Ni, MD. Department of Radiation Oncology, Fudan University Shanghai Cancer Center, 270 Dong An Road, Shanghai, China. Email: nijianjiao8@sina.com; Zhengfei Zhu, MD, PhD. Department of Radiation Oncology, Fudan University Shanghai Cancer Center, 270 Dong An Road, Shanghai, China. Email: fusczzf@163.com.

Background: Despite the emergence of programmed death 1/programmed death-ligand 1 (PD-1/PD-L1) inhibitors in the treatment of non-small cell lung cancer (NSCLC) patients with brain metastases (BMs), knowledge gaps remain regarding the impact and timing of cranial radiotherapy for patients receiving anti-PD-1/PD-L1 therapy.

Methods: Data were collected from 461 consecutive patients who received anti-PD-1/PD-L1 therapy for metastatic NSCLC at three institutions between June 2017 and September 2020. Intracranial progressive disease (PD) at the original disease sites, new sites, or both sites were classified as original-site PD (OPD), new-site PD (NPD), and original-and-new-site PD (ONPD), respectively. Patients with baseline BMs were categorized based on whether they received upfront cranial radiotherapy (uCRT) at any time point between the introduction of anti-PD-1/PD-L1 therapy and the first subsequent progression.

Results: Of the 461 patients enrolled, 110 (23.9%) had BMs at baseline. The presence of BMs did not show independent prognostic value for progression-free survival (PFS) or overall survival (OS). During a median follow-up of 13.2 months, 96 patients with BMs developed PD, of whom 53 (55.2%) experienced intracranial PD. OPD, NPD, and ONPD were observed in 50.9%, 18.9%, and 30.2% of patients, respectively. Patients who received uCRT exhibited a longer median OS than those with BMs who did not receive uCRT (25.4 *vs.* 14.6 months, HR: 0.52, 95% CI: 0.29–0.91, *P*=0.041); this survival advantage was more prominent in patients with 1–4 BMs (median OS, 25.4 *vs.* 17.0 months, HR: 0.42, 95% CI: 0.22–0.81, *P*=0.024), and uCRT was independently associated with OS among these patients.

Conclusions: The presence of BMs at baseline was not associated with poorer OS in patients with metastatic NSCLC treated with anti-PD-1/PD-L1 therapy. Intracranial progression on PD-1/PD-L1 inhibitors predominately occurred at the original BM sites. The use of uCRT may improve OS, especially in NSCLC patients with 1–4 BMs.

Keywords: Cranial radiotherapy; brain metastases (BMs); immune checkpoint inhibitors; non-small cell lung cancer (NSCLC)

Submitted Jun 24, 2021. Accepted for publication Feb 11, 2022.

doi: 10.21037/tlcr-22-54

View this article at: <https://dx.doi.org/10.21037/tlcr-22-54>

Introduction

Historically, the dismal outcomes of patients with non-small cell lung cancer (NSCLC) with brain metastases (BMs) have often led to considerable therapeutic nihilism. However, evolving radiotherapy (RT) techniques, together with the advances in neuroimaging and medical oncology developed in the past few decades, have dramatically transformed the therapeutic landscape of brain-metastatic NSCLC. In particular, the unique pharmacokinetics/pharmacodynamics of programmed death receptor (ligand) 1 (PD-1/PD-L1) inhibitors are challenging the traditional notion of the brain as a fully protected biological sanctuary (1). For example, in high-grade gliomas, cerebrospinal fluid (CSF) concentrations of systemically delivered pembrolizumab show a mean CSF:serum ratio of 0.009, and CSF pembrolizumab concentrations were sufficient to block PD-1 in functional assays, suggesting that systemically administered PD-1/PD-L1 inhibitors could elicit a local effect in the central nervous system (CNS) (2). Unfortunately, most pivotal trials of PD-1/PD-L1 inhibitors in advanced NSCLC have excluded patients with untreated and/or active BMs (3-6). Consequently, knowledge gaps remain regarding the role of PD-1/PD-L1 inhibitors in the treatment of brain-metastatic NSCLC, and data from real-world clinical practice with less-selected populations are therefore urgently needed.

Given the importance of RT as the mainstay of local treatment for patients with BMs, the relative roles of cranial RT and anti-PD-1/PD-L1 therapy are of considerable clinical interest for defining the optimal treatment strategy for brain-metastatic NSCLC. A growing body of literature suggests that the combination of RT and PD-1/PD-L1 inhibitors could be superior to RT alone or exclusively systemic therapy in terms of local control and survival (7-10). However, this combination strategy has not been fully optimized and some questions

remain unanswered, such as the appropriate treatment sequences.

Herein, we hypothesize that upfront cranial radiotherapy (uCRT) delivered before disease progression on PD-1/PD-L1 inhibitors may provide better local and distant tumor control or even improve overall survival (OS) compared to PD-1/PD-L1 inhibitors alone. This hypothesis is based on the idea that immune checkpoint inhibitor-resistant clones which lack particular tumor antigens or antigen presentation in persistent intracranial lesions can serve as seeds for new metastases and lead to distant brain failure. Moreover, cranial irradiation is more likely to achieve potent antitumor efficacy in patients with a lower CNS disease burden than in patients with progressive intracranial disease after anti-PD-1/PD-L1 therapy. However, there is a paucity of data available regarding the patterns of initial and intracranial progression on PD-1/PD-L1 inhibitors, and the efficacy of uCRT in patients with PD-1/PD-L1 inhibitor-treated brain-metastatic NSCLC stratified by the number of BMs has not been explored in a large patient population.

Therefore, we performed a retrospective multi-institutional study to examine the impact of the presence of BMs on OS in patients with metastatic NSCLC treated using PD-1/PD-L1 inhibitors. In addition, we present patterns of initial and intracranial progression on PD-1/PD-L1 inhibitors and the outcomes of patients with PD-1/PD-L1 inhibitor-treated brain-metastatic NSCLC according to the receipt of uCRT (yes *vs.* no) and number of BMs (1–4 *vs.* >4). To limit potential bias in patient selection and data analysis, all consecutive patients with metastatic NSCLC who received PD-(L)1 inhibitor-containing treatment regimen at three participating institutions between June 2017 and September 2020 were considered. Multivariate analysis was performed by incorporating treatment modality and baseline characteristics.

We present the following article in accordance with the STROBE reporting checklist (available at <https://tldr.amegroups.com/article/view/10.21037/tlcr-22-54/rc>).

Methods

Study population and data collection

A retrospective analysis of patients with metastatic NSCLC at diagnosis or early-stage NSCLC with a recurrence or progression who received immune checkpoint inhibitors of the PD-1/PD-L1-axis (pembrolizumab, nivolumab, camrelizumab, or atezolizumab) monotherapy or combined with other regimens in the metastatic setting at three institutions (Tongji Hospital of Tongji Medical College, Fudan University Zhongshan Hospital, and Fudan University Shanghai Cancer Center) between June 2017 and September 2020 was conducted. All included patients had histologically confirmed NSCLC and complete follow-up data. Patients with leptomeningeal metastases were excluded due to their extremely poor prognosis (11). Electronic patient records were reviewed, and the relevant demographic and clinical information was extracted, including sex, age at anti-PD-1/PD-L1 therapy, line of PD-(L)1 inhibitor treatment, smoking history, tumor histology, PD-L1 expression status, Eastern Cooperative Oncology Group performance status (ECOG PS), number of organs harboring metastases, presence or absence of BMs, number of BMs, diameter of the largest BM, clinical presentation (symptomatic *vs.* asymptomatic), treatment regimen (monotherapy or combined with chemotherapy), and prior RT for BMs. Patients with PD-L1 expression $\geq 1\%$ of tumor cells were defined as PD-L1-positive, which is consistent with the threshold for positive PD-L1 expression used in previous clinical trials evaluating the efficacy of PD-(L)1 inhibitors in patients with NSCLC (12).

Follow-up radiological imaging with CT or MRI was typically performed at intervals of 6–8 weeks. To assess tumor response to therapy, two senior radiologists subjected serial scans to review independently according to the Response Evaluation Criteria in Solid Tumors (RECIST) version 1.1. Available follow-up brain MRI scans were evaluated for intracranial therapeutic response and disease progression at original or new sites in the brain. Intracranial progressive disease (PD) at the original disease sites, new sites, or both were classified as original-site PD (OPD), new-site PD (NPD), and original-and-new-site PD (ONPD), respectively. Data collection was cut-off by March

30, 2021. The study was conducted in accordance with the Declaration of Helsinki (as revised in 2013). The study was approved by the Institutional Review Board of Fudan University Shanghai Cancer Center (No. 2012228-3), Ethics Committee of Zhongshan Hospital, Fudan University (No. B2021-125R), and Ethics Committee of the Tongji Medical College of Huazhong University of Science and Technology (No. TJ-IRB20200731), and individual consent for this retrospective analysis was waived.

RT

The patients with BMs were categorized into two groups (uCRT *vs.* non-uCRT) accordingly to whether they received uCRT at any point between the initiation of anti-PD-1/PD-L1 therapy and the first subsequent progression event. Whole-brain radiotherapy (WBRT) was delivered at a median dose of 30 Gy (range, 30–40 Gy) in 10–20 fractions. According to each center's clinical practice, single-fraction stereotactic radiosurgery (SRS)/fractionated stereotactic radiotherapy (SRT) schedules ranged from 15–24 Gy in 1 fraction, 20–30 Gy in 3 fractions, 24–32 Gy in 4 fractions, and 25–35 Gy in 5 fractions. The dose fractionation schedules prescribed varied with tumor location, tumor size, and clinical presentation (symptomatic *vs.* asymptomatic).

Statistical analysis

Patients' clinical and treatment characteristics were compared using the χ^2 test or Fisher's exact test for categorical variables, and unpaired Student's *t*-test or Mann-Whitney *U* test for continuous variables, as appropriate. Progression-free survival (PFS) was defined as the time from the start of anti-PD-1/PD-L1 therapy to disease progression or death. Intracranial PFS (iPFS) was defined as the time from the start of anti-PD-1/PD-L1 therapy to radiologically confirmed intracranial progression or death. OS was defined as the time from the start of anti-PD-1/PD-L1 therapy to death. The Kaplan-Meier method was adopted to estimate PFS, iPFS, and OS, and survival curves were compared using log-rank testing. Cox proportional-hazards regression was used to estimate univariate and multivariate hazard ratios (HRs) and 95% confidence intervals (CIs) for PFS and OS. Variables were selected for the multivariate analysis based on their statistical significance ($P < 0.10$) by univariate analysis. Time to intracranial progression was measured from the start of anti-PD-1/PD-L1 therapy to radiologically confirmed

intracranial progression (event of interest). Competing risk methodology was adopted to perform actuarial univariate and multivariate analyses of factors potentially associated with time to intracranial progression, in which death without the event was defined as a competing risk. A two-sided P value <0.05 was considered statistically significant. All statistical analyses were performed with SPSS 21.0 (SPSS, Chicago, IL, USA) and GraphPad Prism 7.0 (La Jolla, CA).

Results

Patient characteristics

In total, 461 consecutive patients with metastatic NSCLC who met the eligible criteria were identified from the 3 participating centers (Figure S1). PD-(L)1 inhibitor was received in the first-, second-, and third- or later-line setting in 206 (44.7%), 138 (29.9%), and 117 (25.4%) patients, respectively. 110 (23.9%) had BMs at the initiation of anti-PD-1/PD-L1 therapy. Table 1 outlines the baseline characteristics of patients with and without BMs. Clinical characteristics were generally comparable between the two groups of patients, except for the BM group being slightly younger (median age, 60 vs. 61 years, $P=0.045$) and having a greater proportion of cases with adenocarcinoma histology [84.5% (93/110) vs. 61.8% (217/351), $P<0.001$]. Among the patients with BMs at baseline, the median number of BMs was 2, and 22 (20.0%) had symptomatic BMs at the initiation of anti-PD-1/PD-L1 therapy. Further details of patients' BMs and treatment characteristics are summarized in Table S1.

Efficacy of anti-PD-1/PD-L1 therapy

The median follow-up time for the entire cohort is 13.2 months (range, 0.8–44.4 months). There were no significant differences in treatment outcomes among centers. Patients with and without BMs showed an overall response rate (RR) of 24.5% and 28.2%, respectively ($P=0.452$). Among patients that were evaluable for CNS objective response (at least one measurable BM lesion on baseline brain scan according to the RECIST 1.1 criteria) ($n=75$), the intracranial RR was 28.0% ($n=1$ with complete response and $n=20$ with partial response). A discordant intracranial and systemic response was observed in 5 patients, including 3 who developed PD in the brain while showing a systemic response, and 2 patients who experienced intracranial

response with concurrent rapid systemic progression. Information regarding PD-L1 status was available for 20 of the 75 patients who were evaluable for intracranial outcomes: 12 (60%) patients had PD-L1 positivity (PD-L1 expressed on $\geq 1\%$ of tumor cells). The intracranial RR was 33.3% (4/12) and 12.5% (1/8) for PD-L1-positive and PD-L1-negative patients, respectively. The median PFS and OS were 3.0 (95% CI: 2.4–3.6) months and 21.1 (95% CI: 15.1–27.1) months, respectively, in patients with baseline BMs, and 4.8 (95% CI: 4.2–5.4) months and 20.8 (95% CI: 17.9–23.7) months, respectively, in patients without baseline BMs (Figure 1). The presence of BMs showed no prognostic association with PFS or OS (Tables S2,S3).

Initial and intracranial progression

At data cutoff, PD had occurred in 277 (78.9%) of 351 patients without BMs and 96 (87.3%) of 110 patients with BMs. Patterns of initial progression are shown in Figure 2.

Among the 277 patients without BMs at baseline who progressed, the brain was the first site of progression in 21 (7.6%) patients, including 8 (2.9%) patients who had intracranial progression detected synchronously with extracranial recurrence. Of the 21 patients with intracranial PD, 10 (47.6%) developed multiple (>4) brain lesions, whereas the remainder had limited [1–4] BMs. The cumulative actuarial rates of developing BMs at 6, 12, and 18 months were 5.7%, 10.0%, and 14.4%, respectively. Univariate analysis uncovered primary tumor size (HR: 6.39, 95% CI: 1.88–21.71, $P=0.003$) and the number of organs harboring metastases (HR: 5.60, 95% CI: 1.88–16.67, $P=0.002$) as risk factors associated with the development of BMs. On multivariate analysis, primary tumor size remained significant as a risk factor for BMs (HR: 5.79, 95% CI: 1.70–19.69, $P=0.005$), as did the number of organs harboring metastases (HR: 5.07, 95% CI: 1.70–15.10, $P=0.004$; Table S4).

Among the 96 patients with baseline BMs who progressed, the brain was the first site of progression in 53 (55.2%) patients, including 31 (32.3%) patients who had intracranial PD detected synchronously with extracranial progression. OPD, NPD, and ONPD were documented in 27 (50.9%), 10 (18.9%), and 16 (30.2%) patients, respectively. Of note, in the subgroup of patients who did not receive any local therapy for BMs before disease progression and experienced intracranial PD by the time of data cutoff ($n=53$), 31 (58.5%) had intracranial PD as the first site of progression, and of them, 16 (51.6%)

Table 1 Baseline characteristics of patients with advanced NSCLC, stratified according to the presence of BMs

Characteristics	Total (N=461)	Without BMs (N=351)	With BMs (N=110)	P value†
Median age at initiation of PD-(L)1 inhibitor treatment, years [range]	61 [24–86]	61 [29–86]	60 [24–74]	0.045
Sex, n (%)				
Male	371 (80.5)	288 (82.1)	83 (75.5)	0.128
Female	90 (19.5)	63 (17.9)	27 (24.5)	
Smoking status at initiation of PD-(L)1 inhibitor treatment, n (%)				
Current	124 (26.9)	93 (26.5)	31 (28.2)	0.930
Former	220 (47.7)	169 (48.1)	51 (46.4)	
Never	117 (25.4)	89 (25.4)	28 (25.5)	
ECOG PS, n (%)				
0–1	354 (76.8)	275 (78.3)	79 (71.8)	0.157
≥2	107 (23.2)	76 (21.7)	31 (28.2)	
Histology, n (%)				
Adenocarcinoma	310 (67.2)	217 (61.8)	93 (84.5)	<0.001
Squamous cell	126 (27.3)	113 (32.2)	13 (11.8)	
NSCLC, other	25 (5.4)	21 (6.0)	4 (3.6)	
PD-L1 status, n (%)				
Positive	90 (19.5)	66 (18.8)	24 (21.8)	0.517
Negative	30 (6.5)	21 (6.0)	9 (8.2)	
Unknown	341 (74.0)	264 (75.2)	77 (70.0)	
<i>EGFR</i> mutation (238 tested)	41 (17.2)	29 (16.4)	12 (19.7)	0.558
<i>ALK</i> rearrangement (189 tested)	3 (1.6)	2 (1.4)	1 (2.0)	1.00
<i>KRAS</i> mutation (89 tested)	21 (23.6)	16 (23.9)	5 (22.7)	0.912
Median no. of extracranial organs involved in metastatic disease [range]	2 [0–8]	2 [1–8]	2 [0–8]	0.251
PD-(L)1 inhibitor therapy line, range 1–7				
1	206 (44.7)	168 (47.9)	38 (34.5)	0.003
2	138 (29.9)	107 (30.5)	31 (28.2)	
≥3	117 (25.4)	76 (21.7)	41 (37.3)	
Type of inhibitor				
PD-1	435 (94.4)	331 (94.3)	104 (94.5)	0.923
PD-L1	26 (5.6)	20 (5.7)	6 (5.5)	

Table 1 (continued)

Table 1 (continued)

Characteristics	Total (N=461)	Without BMs (N=351)	With BMs (N=110)	P value [†]
Monotherapy or combination				
Anti-PD-1/PD-L1 monotherapy				
1 st line	54 (11.7)	44 (12.5)	10 (9.1)	0.077
≥2 nd line	145 (31.5)	101 (28.8)	44 (40.0)	
Combination*				
1 st line	152 (33.0)	124 (35.3)	28 (25.5)	
≥2 nd line	110 (23.9)	82 (23.4)	28 (25.5)	

[†], patients with and without baseline brain metastases are compared; *, combination of anti-PD-1/PD-L1 therapy and chemotherapy or anti-PD-1/PD-L1 therapy and EGFR-TKIs. ALK, anaplastic lymphoma kinase; NSCLC, non-small cell lung cancer; BMs, brain metastases; ECOG PS, Eastern Cooperative Oncology Group performance status; EGFR, endothelial growth factor receptor; KRAS, Kirsten rat sarcoma; PD-(L)1, programmed death receptor (ligand) 1.

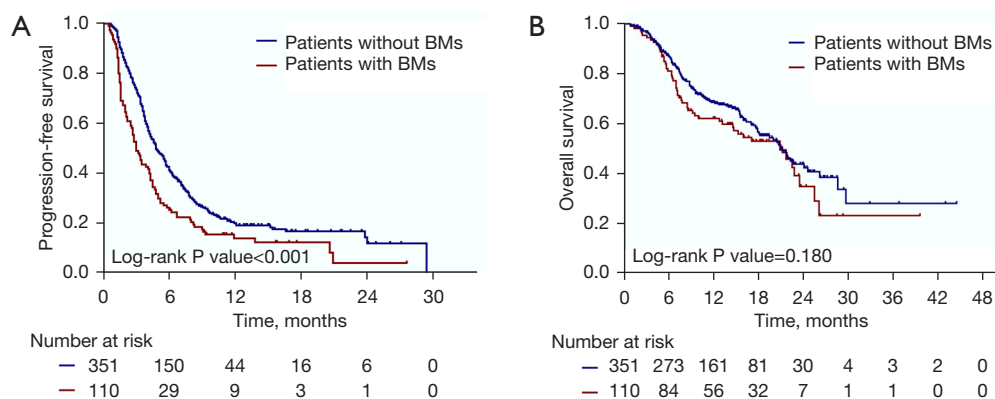


Figure 1 Kaplan-Meier estimates of PFS (A) and OS (B) for patients with baseline BMs versus those without baseline BMs. PFS, progression-free survival; OS, overall survival; BMs, brain metastases.

experienced progressive intracranial disease only at the original BM sites, suggesting a potential role of uCRT in the treatment of these patients.

Outcomes according to the receipt of uCRT and number of BMs

Of the 110 patients with BMs at baseline, 26 (23.6%) received uCRT (WBRT: 6, 23.1%; SRT: 12, 46.2%; SRS: 8, 30.8%). All patients with 1–4 BMs (n=18) in the uCRT group received SRS/SRT. For patients with >4 BMs who were treated with uCRT (n=8), 6 (75%) received WBRT and 2 (25%) received SRS/SRT. The median interval between the initiation of PD-1/PD-L1 inhibitor treatment and the initiation of uCRT was 15 days (inter-quartile

range, 13–47 days). The baseline characteristics of patients treated with and without uCRT are summarized in Table 2. Compared with the non-uCRT group, the uCRT group had higher proportions of patients with symptomatic BMs [34.6% (9/26) vs. 15.5% (13/84), P=0.033] and CNS lesions with a maximum diameter ≥10 mm [88.5% (23/26) vs. 65.5% (55/84), P=0.024]. Patients treated with uCRT had numerically longer iPFS (median iPFS, 9.3 vs. 4.2 months, HR: 0.58, 95% CI: 0.34–1.02, P=0.061, Figure 3A) and statistically significantly improved PFS and OS compared to those with BMs who did not receive uCRT (median PFS, 4.3 vs. 2.7 months, HR: 0.62, 95% CI: 0.40–0.95, P=0.043, Figure 3B; median OS, 25.4 vs. 14.6 months, HR: 0.52, 95% CI: 0.29–0.91, P=0.041, Figure 3C). For patients with BMs at baseline, a significant association was uncovered between

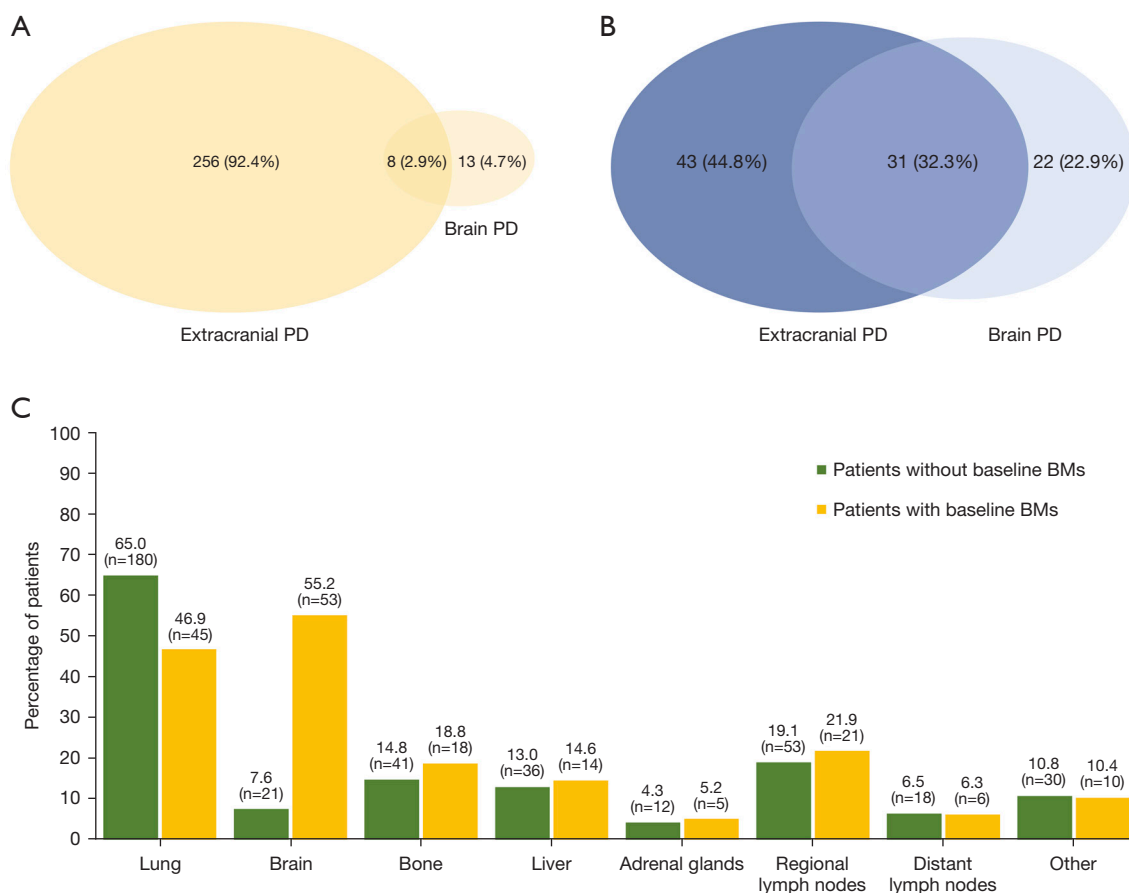


Figure 2 Patterns of initial disease progression analysis. (A) Venn diagram of patterns of initial progression in patients without baseline BMs; (B) Venn diagram of patterns of initial progression in patients with baseline BMs; (C) bar graph showing sites of initial progression on PD-(L)1 inhibitor treatment. BMs, brain metastases; PD, progressive disease.

uCRT and a favorable survival outcome on univariate analysis (HR: 0.50, 95% CI: 0.25–0.99, $P=0.045$), and this association retained borderline significance on multivariate analysis (HR =0.55, 95% CI: 0.28–1.10, $P=0.055$, Table S5).

The patients with baseline BMs were further subdivided into four groups according to the number of BMs (1–4 or >4) and receipt of uCRT (yes or no). The beneficial effects of uCRT in terms of iPFS, PFS, and OS were more prominent in patients with 1–4 BMs ($n=83$) (median iPFS, 20.6 vs. 4.7 months, HR: 0.47, 95% CI: 0.26–0.87, $P=0.034$, Figure 4A; median PFS, 4.8 vs. 3.0 months, HR: 0.55, 95% CI: 0.33–0.90, $P=0.035$, Figure 4B; median OS, 25.4 vs. 17.0 months, HR: 0.42, 95% CI: 0.22–0.81, $P=0.024$, Figure 4C) than in patients with >4 BMs ($n=27$), among whom no significant benefit was indicated in terms of iPFS, PFS, or OS (median iPFS, 5.2 vs. 2.8 months, HR: 1.13, 95% CI: 0.30–4.21, $P=0.843$, Figure 4A; median PFS, 1.8

vs. 1.8 months, HR: 0.84, 95% CI: 0.36–1.95, $P=0.686$, Figure 4B; median OS, 13.1 vs. 14.5 months, HR: 0.82, 95% CI: 0.27–2.49, $P=0.730$, Figure 4C). Table S6 gives details on patients with 1–4 BMs. Among patients with 1–4 BMs, the proportion of cases with symptomatic BMs at the initiation of anti-PD-1/PD-L1 therapy was higher in the uCRT group than the non-uCRT group [33.3% (6/18) vs. 10.8% (7/65), $P=0.049$]. Univariate and multivariate analyses revealed that uCRT was independently associated with improved OS among patients with 1–4 BMs (univariate HR: 0.38, 95% CI: 0.16–0.90, $P=0.028$; multivariate HR: 0.38, 95% CI: 0.16–0.94, $P=0.035$; Table 3).

Discussion

To date, numerous studies have been published focusing on the impact and timing of cranial RT in relation to anti-

Table 2 Baseline characteristics of patients treated with versus without uCRT

Characteristics	Total (N=110)	uCRT group (N=26)	Non-uCRT group (N=84)	P value [†]
Median age at initiation of PD-(L)1 inhibitor treatment, years [range]	60 [24–74]	57 [41–74]	60 [24–72]	0.914
Sex, n (%)				
Male	83 (75.5)	21 (80.8)	62 (73.8)	0.471
Female	27 (24.5)	5 (19.2)	22 (26.2)	
Smoking status at initiation of PD-(L)1 inhibitor treatment, n (%)				
Current	31 (28.2)	9 (34.6)	22 (26.2)	0.610
Former	51 (46.4)	10 (38.5)	41 (48.8)	
Never	28 (25.5)	7 (26.9)	21 (25.0)	
ECOG PS, n (%)				
0–1	79 (71.8)	20 (76.9)	59 (70.2)	0.508
≥2	31 (28.2)	6 (23.1)	25 (29.8)	
Histology, n (%)				
Adenocarcinoma	93 (84.5)	22 (84.6)	71 (84.5)	1.00
Squamous cell	13 (11.8)	3 (11.5)	10 (11.9)	
NSCLC, other	4 (3.6)	1 (3.8)	3 (3.6)	
PD-L1 status, n (%)				
Positive	24 (21.8)	5 (19.2)	19 (22.6)	0.571
Negative	9 (8.2)	1 (3.8)	8 (9.5)	
Unknown	77 (70.0)	20 (76.9)	57 (67.9)	
Extracranial metastases, n (%)				
Yes	90 (81.8)	19 (73.1)	71 (84.5)	0.302
No	20 (18.2)	7 (26.9)	13 (15.5)	
PD-(L)1 inhibitor therapy line, range 1–7, n (%)				
1	38 (34.5)	12 (46.2)	26 (31.0)	0.363
2	31 (28.2)	6 (23.1)	25 (29.8)	
≥3	41 (37.3)	8 (30.8)	33 (39.3)	
Type of inhibitor, n (%)				
PD-1	104 (94.5)	23 (88.5)	81 (96.4)	0.143
PD-L1	6 (5.5)	3 (11.5)	3 (3.6)	
Monotherapy or combination, n (%)				
Anti-PD-1/PD-L1 monotherapy				
1 st line	10 (9.1)	1 (3.8)	9 (10.7)	0.097
≥2 nd line	44 (40.0)	7 (26.9)	37 (44.0)	

Table 2 (continued)

Table 2 (continued)

Characteristics	Total (N=110)	uCRT group (N=26)	Non-uCRT group (N=84)	P value [†]
Combination*				
1 st line	28 (25.5)	11 (42.3)	17 (20.2)	
≥2 nd line	28 (25.5)	7 (26.9)	21 (25.0)	
No. of BMs, n (%)				
1–4	83 (75.5)	18 (69.2)	65 (77.4)	0.399
>4	27 (24.5)	8 (30.8)	19 (22.6)	
Diameter of largest BM, n (%)				
<10 mm	32 (29.1)	3 (11.5)	29 (34.5)	0.024
≥10 mm	78 (70.9)	23 (88.5)	55 (65.5)	
Symptomatic BMs at PD-(L)1 inhibitor treatment initiation, n (%)				
Yes	22 (20.0)	9 (34.6)	13 (15.5)	0.033
No	88 (80.0)	17 (65.4)	71 (84.5)	

[†], patients treated with and without uCRT are compared; *, combination of anti-PD-1/PD-L1 therapy and chemotherapy or anti-PD-1/PD-L1 therapy and EGFR-TKIs. BMs, brain metastases; ECOG PS, Eastern Cooperative Oncology Group performance status; NSCLC, non-small cell lung cancer; PD-(L)1, programmed death receptor (ligand) 1; uCRT, upfront cranial radiotherapy.

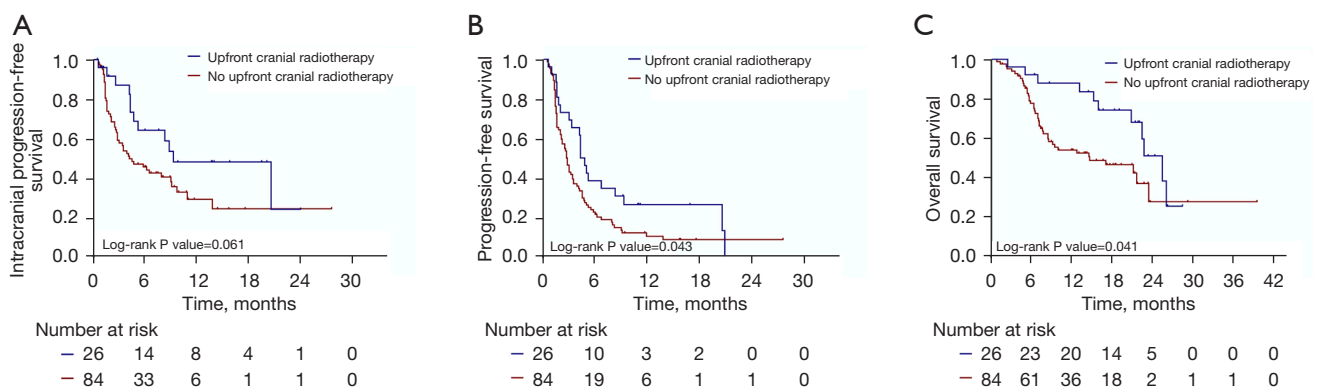


Figure 3 Kaplan-Meier curves for iPFS (A), PFS (B), and OS (C) according to the receipt of uCRT. iPFS, intracranial progression-free survival; OS, overall survival; PFS, progression-free survival.

PD-1/PD-L1 therapy for metastatic NSCLC (8,13-25). Combining cranial RT with PD-1/PD-L1 inhibitors has been demonstrated to provide better tumor control and longer survival than RT alone or exclusively systemic therapy, possibly owing to the favorable immunomodulatory effects of RT (7-9,13-25). For example, Shepard *et al.* reported that the median time to intracranial progression was 3.0 months in the concurrent-ICI cohort, and concurrent ICI and SRS led to an increased rate of complete response in the CNS for NSCLC-BM treated with SRS

compared with SRS alone (50% *vs.* 15.6%, P=0.012) (17). Chen *et al.* retrospectively analyzed the impact of ICIs for patients with NSCLC, melanoma, and RCC with BMs treated with SRS/SRT (8); they reported a superior median OS in those receiving concurrent SRS/SRT and ICI relative to those who underwent SRS/SRT alone (24.7 *vs.* 12.9 months; P=0.002). Furthermore, previous studies have reported extended OS and reduced rates of distant intracranial failure with concurrent PD-1/PD-L1 inhibitors and SRS/SRT compared to sequential therapy (8,14).

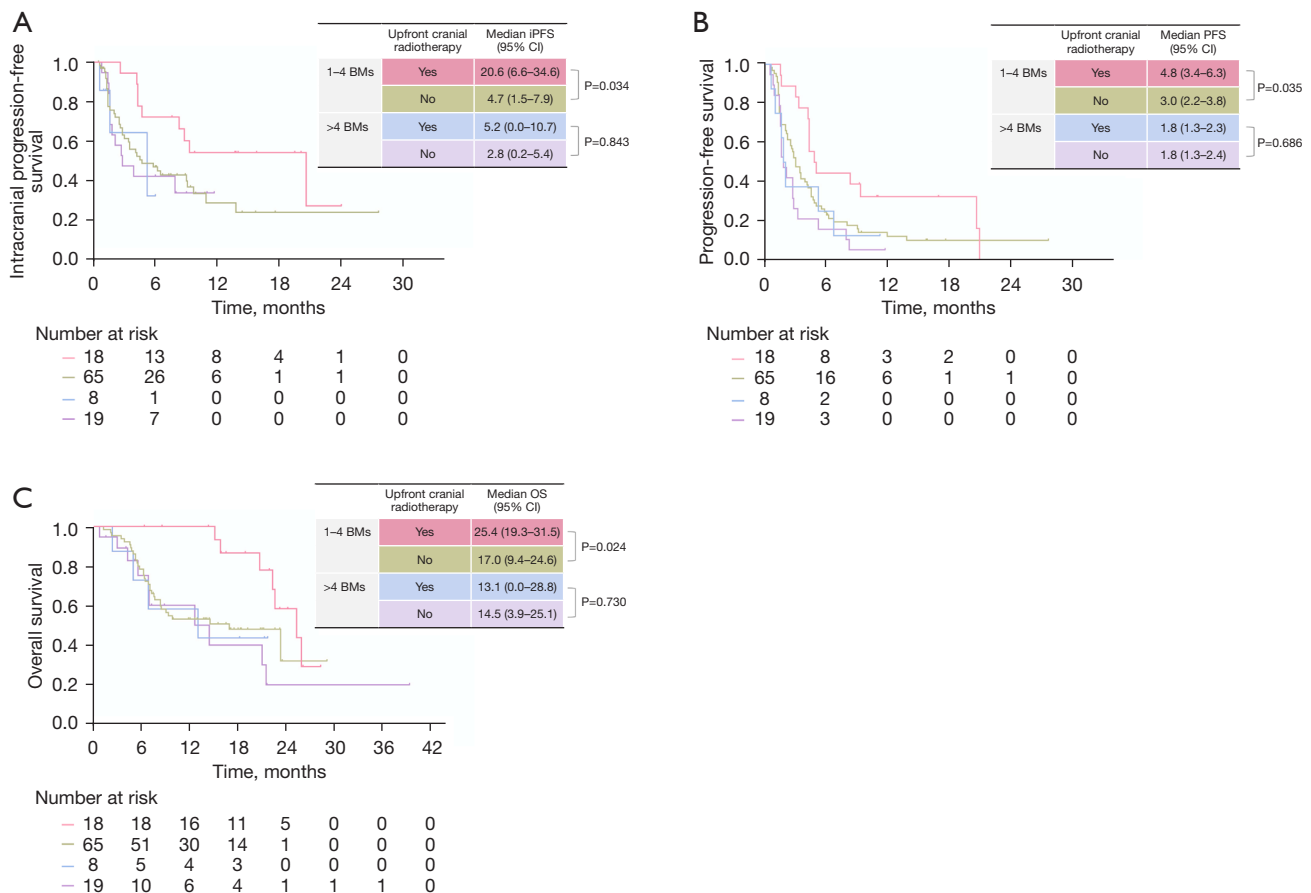


Figure 4 Kaplan-Meier curves for iPFS (A), PFS (B), and OS (C) according to the receipt of uCRT (yes vs. no) and the number of BMs (1-4 vs. >4). BMs, brain metastases; CI, confidence interval; iPFS, intracranial progression-free survival; OS, overall survival; PFS, progression-free survival.

It is noteworthy that most published series are small, single-institution studies and have included heterogeneous groups of patients. Thus, there is still no consensus on the appropriate timing of cranial RT in conjunction to anti-PD-1/PD-L1 therapy in the treatment of patients with brain-metastatic NSCLC. There are several unique features and strengths of the present study compared to previous investigations, e.g., its multi-institutional design, the unique insights it offers into the clinical value of uCRT via a detailed analysis of the patterns of initial and intracranial progression on PD-1/PD-L1 inhibitors and the impact of uCRT on clinical outcomes, focusing particularly on subgroups of patients stratified by the number of BMs.

Despite continuous and considerable efforts, the management of BMs remains a significant challenge in clinical practice. The recent wave of investigations establishing the clinical benefit of anti-PD-1/PD-L1

therapy for advanced NSCLC has also placed a spotlight on the role these immune checkpoint inhibitors can play for patients with BMs. Most studies demonstrated that BM originating from NSCLC was an immunosuppressive microenvironment, suggesting the intriguing possibility that immunotherapy may have a promising role in the treatment of NSCLC-BM (10). Accumulating evidence has shown encouraging results for the use of PD-1/PD-L1 inhibitors in the treatment of brain-metastatic NSCLC (26-32). In our study of patients with metastatic NSCLC treated with PD-1/PD-L1 inhibitors, the median OS was similar between patients with and without BMs. Moreover, univariate and multivariate analyses revealed that the presence of BMs did not carry independent prognostic value for PFS or OS. These observations echo those of earlier studies, in which the presence of BMs at baseline was not identified to be an independent unfavorable prognostic

Table 3 Univariate and multivariate Cox proportional-hazards model for OS in patients with 1–4 BMs

Variables	Univariate analysis			Multivariate analysis		
	HR	95% CI	P	HR	95% CI	P
Age (≤ 60 vs. > 60 years)	1.01	0.74–1.38	0.949	–	–	–
Sex (female vs. male)	1.33	0.94–1.89	0.111	–	–	–
Smoking status (never vs. current or former)	1.00	0.69–1.46	0.989	–	–	–
Histology (adenocarcinoma vs. non-adenocarcinoma)	0.88	0.60–1.30	0.524	–	–	–
ECOG PS (≥ 2 vs. 0–1)	1.83	0.92–3.61	0.083	1.31	0.63–2.72	0.477
Extracranial metastases (yes vs. no)	2.14	0.92–4.99	0.077	1.65	0.67–4.04	0.278
Lines of PD-(L)1 inhibitor treatment (≥ 2 vs. 1)	2.62	1.23–5.56	0.012	2.07	0.93–4.61	0.075
Treatment regimen (monotherapy vs combination therapy)	1.75	0.92–3.32	0.090	1.19	0.60–2.36	0.622
Symptomatic BMs (yes vs. no)	0.39	0.12–1.28	0.122	–	–	–
Diameter of largest BM (≥ 10 vs. < 10 mm)	0.90	0.46–1.75	0.752	–	–	–
Receipt of uCRT (yes vs. no)	0.38	0.16–0.90	0.028	0.38	0.16–0.94	0.035
PD-L1 status						
Positive	0.62	0.17–2.28	0.475	–	–	–
Unknown	0.52	0.16–1.74	0.287	–	–	–
Negative	Ref	–	–	–	–	–

BMs, brain metastases; CI, confidence interval; ECOG PS, Eastern Cooperative Oncology Group performance status; HR, hazard ratio; OS, overall survival; PD-(L)1, programmed death receptor (ligand) 1; uCRT, upfront cranial radiotherapy.

factor for the OS of patients with PD-1/PD-L1 inhibitor-treated NSCLC (22,29,33). Therefore, when patients are treated with PD-1/PD-L1 inhibitors, the brain should not be considered an immune-privileged site, and in carefully selected patients with brain-metastatic NSCLC, anti-PD-1/PD-L1 therapy may provide long-term survival benefit, which requires confirmation in future clinical trials.

The action of PD-1/PD-L1 inhibitors in the CNS can be owing to a dual mechanism: PD-1 blockade of T cells can occur in the systemic circulation before the cells penetrate the blood-brain barrier (BBB) and PD-1/PD-L1 inhibitors themselves can penetrate the BBB and have a direct intracranial antitumor effect. Recently, pembrolizumab CSF levels have been measured in 10 patients with high-grade gliomas treated with intravenous administration of pembrolizumab and intracranial administration of chimeric antigen receptor T cells (2). Results of this study revealed steady-state pembrolizumab CSF concentrations, and *in vitro* tumor rechallenge assays and PD-1 T-cell blocking data demonstrated that CSF concentrations were sufficient for blocking PD-1 on endogenous and adoptively transferred T cells, suggesting the direct intracranial effect

of PD-1/PD-L1 inhibitors in the CNS.

Despite the promising efficacy of PD-1/PD-L1 inhibitors, the development of drug resistance is inevitable in most patients. In our research, the brain was the first site of progression more frequently in patients with baseline BMs than in those without (55.2% vs. 7.6%; $P < 0.001$). Among patients without baseline BMs, the 1-year actuarial rate of developing BMs was 10.0% and having a primary tumor > 2 cm and more than 2 organs involved in metastatic disease increased the likelihood of developing BMs. In most patients without initial CNS involvement who eventually suffered intracranial recurrence, extracranial recurrence preceded intracranial recurrence. Therefore, it is possible that distant metastases to the brain may result from systemic reseeding of resistant tumor clones which lack particular tumor antigens or antigen presentation, especially given that most patients in our study continued anti-PD-1/PD-L1 therapy after initial recurrence. Among the patients with baseline BMs who progressed, the brain was the first site of progression in 55.2% of patients. Moreover, intracranial progression on PD-1/PD-L1 inhibitors occurred predominately at the original tumor sites in the brain.

These observations suggest the intriguing possibility that uCRT before disease progression could carry the potential advantage of prolonging time to progression and improving overall outcomes, without even considering the profound immunomodulatory effects of RT and its potential synergy with anti-PD-1/PD-L1 immunotherapy.

To test this hypothesis, we classified patients with brain-metastatic NSCLC into two groups according to the receipt of uCRT. Our data showed that patients treated with uCRT had numerically longer iPFS and significantly improved PFS and OS compared to those who did not receive uCRT, which suggests a potential synergistic effect of uCRT in combination with anti-PD-1/PD-L1 therapy. It is noteworthy that in the uCRT group, heterogeneity in the modality of uCRT (WBRT or SRT/SRS) and the influence of the number of BMs on treatment selection can be a cause of concern; therefore, to mitigate this concern, we further subdivided patients with BMs into four groups according to the number of BMs and receipt of uCRT. The advantages of using uCRT in terms of iPFS, PFS, and OS were more prominent in patients with 1–4 BMs. Our findings suggest that upfront SRT/SRS may provide survival benefit for selected patients with a limited number of BMs (i.e., 1–4 BMs).

We chose 4 as the cutoff value between limited BMs and multiple BMs in this study for several reasons. First, WBRT is usually offered to patients with multiple BMs, while a maximum of 4 BMs was typically treated with SRS. To limited the selection bias associated with the influence of BM number on RT modality selection, patients with BMs were stratified into 1–4 BMs and >4 BMs groups. Second, the clinical value of cranial RT in conjunction with EGFR-TKIs or chemotherapy for NSCLC patients with 1–4 or >4 BMs has been widely investigated (34–36), while the role of cranial RT in patients stratified by the number of BMs remain a largely unexplored field in the era of immunotherapy. It is noteworthy that as the indications for SRT/SRS continue to expand, an increasing number of patients with multiple (>4) BMs could be considered for SRT/SRS instead of WBRT. More studies on the role of upfront SRT/SRS in the management of patients with multiple BMs treated with PD-1/PD-L1 inhibitors are needed.

There are a few limitations to the present study that should be acknowledged. First, the retrospective nature of this study makes it prone to confounding. For instance, the decision to incorporate uCRT into the treatment of patients with brain-metastatic NSCLC receiving PD-1/PD-L1

inhibitors may have been influenced by multiple factors, such as age, ECOG PS, the burden of intracranial disease, and clinical presentation (symptomatic *vs.* asymptomatic). In turn, these confounding factors could have influenced the outcome comparisons between the groups. Furthermore, we did not report on neurological adverse events due to the lack of clinical documentation. Previous literature suggests that the short-term safety profile of combined PD-1 pathway inhibition and cranial RT appeared to be acceptable, with no significant increase in RT- or immune-related adverse events observed in relation to this combination treatment (8,13,14,37). Nevertheless, caution is warranted, as some reports have raised the concern that PD-1/PD-L1 inhibitors could potentially exacerbate radiation-related necrosis (38–40), and the toxicities of this combination treatment, especially regarding long-term neurological and cognitive sequelae, still need to be established.

Conclusions

The presence of BMs at baseline was not associated with a survival difference in patients with metastatic NSCLC treated with PD-1/PD-L1 inhibitors. Most patients with PD-1/PD-L1 inhibitor-treated brain-metastatic NSCLC developed progressive intracranial disease at the original metastatic sites in the brain. Patients who received uCRT exhibited a longer median OS than those with BMs who did not receive uCRT; this survival advantage was more prominent in patients with 1–4 BMs. The findings obtained from the present study offer insight into and generate hypotheses related to the treatment of brain-metastatic NSCLC, which merit further investigation.

Acknowledgments

The authors appreciate the academic support from AME Lung Cancer Collaborative Group.

Funding: This work was supported by the Chinese Society of Clinical Oncology (Grant Nos. Y-BMS2019082, Y-MSD20200147).

Footnote

Reporting Checklist: The authors have completed the STROBE reporting checklist. Available at <https://tcr.amegroups.com/article/view/10.21037/tcr-22-54/rc>

Data Sharing Statement: Available at <https://tcr.amegroups.com>

[com/article/view/10.21037/tlcr-22-54/dss](https://doi.org/10.21037/tlcr-22-54/dss)

Conflicts of Interest: All authors have completed the ICMJE uniform disclosure form (available at <https://tlcr.amegroups.com/article/view/10.21037/tlcr-22-54/coif>). Dr. KWM receives Research Grant for clinical trials from AstraZeneca and Novartis, Education Grant from Pfizer and Varian; gets Travel support for a research meeting from AstraZeneca; and sits on Board of Directors of Global Access to Cancer Care Foundation. The other authors have no conflicts of interest to declare.

Ethical Statement: The authors are accountable for all aspects of the work in ensuring that questions related to the accuracy or integrity of any part of the work are appropriately investigated and resolved. The study was conducted in accordance with the Declaration of Helsinki (as revised in 2013). The study was approved by the Institutional Review Board of Fudan University Shanghai Cancer Center (No. 2012228-3), Ethics Committee of Zhongshan Hospital, Fudan University (No. B2021-125R), and Ethics Committee of the Tongji Medical College of Huazhong University of Science and Technology (No. TJ-IRB20200731), and individual consent for this retrospective analysis was waived.

Open Access Statement: This is an Open Access article distributed in accordance with the Creative Commons Attribution-NonCommercial-NoDerivs 4.0 International License (CC BY-NC-ND 4.0), which permits the non-commercial replication and distribution of the article with the strict proviso that no changes or edits are made and the original work is properly cited (including links to both the formal publication through the relevant DOI and the license). See: <https://creativecommons.org/licenses/by-nc-nd/4.0/>.

References

- van Bussel MTJ, Beijnen JH, Brandsma D. Intracranial antitumor responses of nivolumab and ipilimumab: a pharmacodynamic and pharmacokinetic perspective, a scoping systematic review. *BMC Cancer* 2019;19:519.
- Portnow J, Wang D, Blanchard MS, et al. Systemic Anti-PD-1 Immunotherapy Results in PD-1 Blockade on T Cells in the Cerebrospinal Fluid. *JAMA Oncol* 2020;6:1947-51.
- Borghaei H, Paz-Ares L, Horn L, et al. Nivolumab versus Docetaxel in Advanced Nonsquamous Non-Small-Cell Lung Cancer. *N Engl J Med* 2015;373:1627-39.
- Brahmer J, Reckamp KL, Baas P, et al. Nivolumab versus Docetaxel in Advanced Squamous-Cell Non-Small-Cell Lung Cancer. *N Engl J Med* 2015;373:123-35.
- Rittmeyer A, Barlesi F, Waterkamp D, et al. Atezolizumab versus docetaxel in patients with previously treated non-small-cell lung cancer (OAK): a phase 3, open-label, multicentre randomised controlled trial. *Lancet* 2017;389:255-65.
- Socinski MA, Jotte RM, Cappuzzo F, et al. Atezolizumab for First-Line Treatment of Metastatic Nonsquamous NSCLC. *N Engl J Med* 2018;378:2288-301.
- Shaverdian N, Lisberg AE, Bornazyan K, et al. Previous radiotherapy and the clinical activity and toxicity of pembrolizumab in the treatment of non-small-cell lung cancer: a secondary analysis of the KEYNOTE-001 phase 1 trial. *Lancet Oncol* 2017;18:895-903.
- Chen L, Douglass J, Kleinberg L, et al. Concurrent Immune Checkpoint Inhibitors and Stereotactic Radiosurgery for Brain Metastases in Non-Small Cell Lung Cancer, Melanoma, and Renal Cell Carcinoma. *Int J Radiat Oncol Biol Phys* 2018;100:916-25.
- Knisely JP, Yu JB, Flanigan J, et al. Radiosurgery for melanoma brain metastases in the ipilimumab era and the possibility of longer survival. *J Neurosurg* 2012;117:227-33.
- Xiao G, Liu Z, Gao X, et al. Immune checkpoint inhibitors for brain metastases in non-small-cell lung cancer: from rationale to clinical application. *Immunotherapy* 2021;13:1031-51.
- Turkaj A, Morelli AM, Valà T, et al. Management of Leptomeningeal Metastases in Non-oncogene Addicted Non-small Cell Lung Cancer. *Front Oncol* 2018;8:278.
- Huang Q, Zhang H, Hai J, et al. Impact of PD-L1 expression, driver mutations and clinical characteristics on survival after anti-PD-1/PD-L1 immunotherapy versus chemotherapy in non-small-cell lung cancer: A meta-analysis of randomized trials. *Oncoimmunology* 2018;7:e1396403.
- Ahmed KA, Kim S, Arrington J, et al. Outcomes targeting the PD-1/PD-L1 axis in conjunction with stereotactic radiation for patients with non-small cell lung cancer brain metastases. *J Neurooncol* 2017;133:331-8.
- Schapiro E, Hubbeling H, Yeap BY, et al. Improved Overall Survival and Locoregional Disease Control With Concurrent PD-1 Pathway Inhibitors and Stereotactic Radiosurgery for Lung Cancer Patients With Brain Metastases. *Int J Radiat Oncol Biol Phys* 2018;101:624-9.
- Singh C, Qian JM, Yu JB, et al. Local tumor response and

- survival outcomes after combined stereotactic radiosurgery and immunotherapy in non-small cell lung cancer with brain metastases. *J Neurosurg* 2019;132:512-7.
16. Crinò L, Bronte G, Bidoli P, et al. Nivolumab and brain metastases in patients with advanced non-squamous non-small cell lung cancer. *Lung Cancer* 2019;129:35-40.
 17. Shepard MJ, Xu Z, Donahue J, et al. Stereotactic radiosurgery with and without checkpoint inhibition for patients with metastatic non-small cell lung cancer to the brain: a matched cohort study. *J Neurosurg* 2019. [Epub ahead of print].
 18. Lanier CM, Hughes R, Ahmed T, et al. Immunotherapy is associated with improved survival and decreased neurologic death after SRS for brain metastases from lung and melanoma primaries. *Neurooncol Pract* 2019;6:402-9.
 19. Qian JM, Martin AM, Martin K, et al. Response rate and local recurrence after concurrent immune checkpoint therapy and radiotherapy for non-small cell lung cancer and melanoma brain metastases. *Cancer* 2020;126:5274-82.
 20. Travis RL, Marcrom SR, Brown MH, et al. Control and Toxicity in Melanoma Versus Other Brain Metastases in Response to Combined Radiosurgery and PD-(L)1 Immune Checkpoint Inhibition. *Adv Radiat Oncol* 2020;6:100561.
 21. Metro G, Gili A, Signorelli D, et al. Upfront pembrolizumab as an effective treatment start in patients with PD-L1 $\geq 50\%$ non-oncogene addicted non-small cell lung cancer and asymptomatic brain metastases: an exploratory analysis. *Clin Transl Oncol* 2021;23:1818-26.
 22. Sun L, Davis CW, Hwang WT, et al. Outcomes in Patients With Non-small-cell Lung Cancer With Brain Metastases Treated With Pembrolizumab-based Therapy. *Clin Lung Cancer* 2021;22:58-66.e3.
 23. Lau SCM, Poletes C, Le LW, et al. Durability of CNS disease control in NSCLC patients with brain metastases treated with immune checkpoint inhibitors plus cranial radiotherapy. *Lung Cancer* 2021;156:76-81.
 24. Rounis K, Skribek M, Makrakis D, et al. Correlation of Clinical Parameters with Intracranial Outcome in Non-Small Cell Lung Cancer Patients with Brain Metastases Treated with Pd-1/Pd-L1 Inhibitors as Monotherapy. *Cancers (Basel)* 2021;13:1562.
 25. Goldberg SB, Schalper KA, Gettinger SN, et al. Pembrolizumab for management of patients with NSCLC and brain metastases: long-term results and biomarker analysis from a non-randomised, open-label, phase 2 trial. *Lancet Oncol* 2020;21:655-63.
 26. Cortinovis D, Chiari R, Catino A, et al. Italian Cohort of the Nivolumab EAP in Squamous NSCLC: Efficacy and Safety in Patients With CNS Metastases. *Anticancer Res* 2019;39:4265-71.
 27. Zhang G, Cheng R, Wang H, et al. Comparable outcomes of nivolumab in patients with advanced NSCLC presenting with or without brain metastases: a retrospective cohort study. *Cancer Immunol Immunother* 2020;69:399-405.
 28. Grossi F, Genova C, Crinò L, et al. Real-life results from the overall population and key subgroups within the Italian cohort of nivolumab expanded access program in non-squamous non-small cell lung cancer. *Eur J Cancer* 2019;123:72-80.
 29. Hendriks LEL, Henon C, Auclin E, et al. Outcome of Patients with Non-Small Cell Lung Cancer and Brain Metastases Treated with Checkpoint Inhibitors. *J Thorac Oncol* 2019;14:1244-54.
 30. Gauvain C, Vauléon E, Chouaid C, et al. Intracerebral efficacy and tolerance of nivolumab in non-small-cell lung cancer patients with brain metastases. *Lung Cancer* 2018;116:62-6.
 31. Gadgeel SM, Lukas RV, Goldschmidt J, et al. Atezolizumab in patients with advanced non-small cell lung cancer and history of asymptomatic, treated brain metastases: Exploratory analyses of the phase III OAK study. *Lung Cancer* 2019;128:105-12.
 32. Dudnik E, Yust-Katz S, Nechushtan H, et al. Intracranial response to nivolumab in NSCLC patients with untreated or progressing CNS metastases. *Lung Cancer* 2016;98:114-7.
 33. Qiao M, Zhou F, Hou L, et al. Efficacy of immune-checkpoint inhibitors in advanced non-small cell lung cancer patients with different metastases. *Ann Transl Med* 2021;9:34.
 34. Miyawaki E, Kenmotsu H, Mori K, et al. Optimal Sequence of Local and EGFR-TKI Therapy for EGFR-Mutant Non-Small Cell Lung Cancer With Brain Metastases Stratified by Number of Brain Metastases. *Int J Radiat Oncol Biol Phys* 2019;104:604-13.
 35. Lim SH, Lee JY, Lee MY, et al. A randomized phase III trial of stereotactic radiosurgery (SRS) versus observation for patients with asymptomatic cerebral oligo-metastases in non-small-cell lung cancer. *Ann Oncol* 2015;26:762-8.
 36. Wang C, Lu X, Lyu Z, et al. Comparison of up-front radiotherapy and TKI with TKI alone for NSCLC with brain metastases and EGFR mutation: A meta-analysis. *Lung Cancer* 2018;122:94-9.
 37. Hubbeling HG, Schapira EF, Horick NK, et al. Safety

- of Combined PD-1 Pathway Inhibition and Intracranial Radiation Therapy in Non-Small Cell Lung Cancer. *J Thorac Oncol* 2018;13:550-8.
38. Kluger HM, Chiang V, Mahajan A, et al. Long-Term Survival of Patients With Melanoma With Active Brain Metastases Treated With Pembrolizumab on a Phase II Trial. *J Clin Oncol* 2019;37:52-60.
39. Alomari AK, Cohen J, Vortmeyer AO, et al. Possible Interaction of Anti-PD-1 Therapy with the Effects of Radiosurgery on Brain Metastases. *Cancer Immunol Res* 2016;4:481-7.
40. Colaco RJ, Martin P, Kluger HM, et al. Does immunotherapy increase the rate of radiation necrosis after radiosurgical treatment of brain metastases? *J Neurosurg* 2016;125:17-23.

Cite this article as: Guo T, Chu L, Chu X, Yang X, Li Y, Zhou Y, Xu D, Zhang J, Wang S, Hu J, Chu Q, Moran T, Cho WCS, Merrell KW, Rizzo S, Liu Y, Ni J, Zhu Z. Brain metastases, patterns of intracranial progression, and the clinical value of upfront cranial radiotherapy in patients with metastatic non-small cell lung cancer treated with PD-1/PD-L1 inhibitors. *Transl Lung Cancer Res* 2022;11(2):173-187. doi: 10.21037/tlcr-22-54

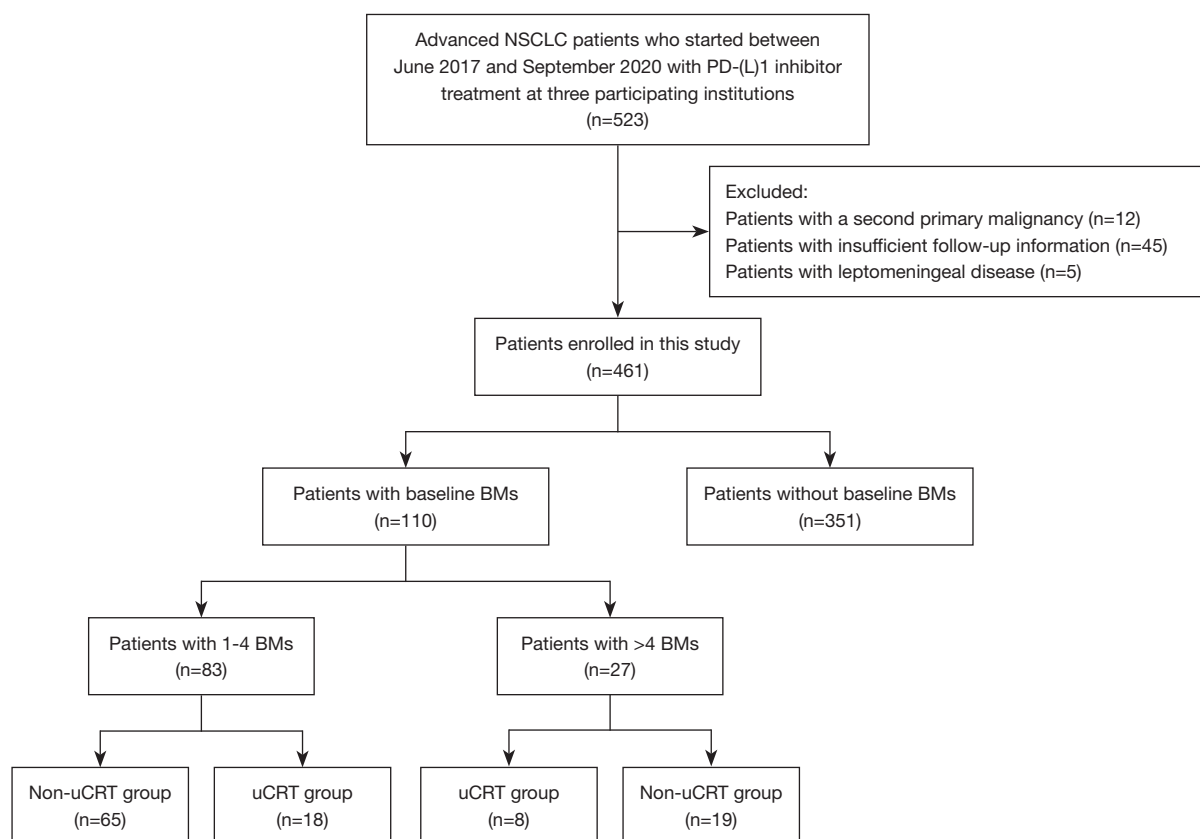


Figure S1 Flowchart of patient enrollment. BMs, brain metastases; NSCLC, non-small cell lung cancer; PD-(L)1, programmed death receptor (ligand) 1; uCRT, upfront cranial radiotherapy.

Table S1 Brain metastases and treatment characteristics of 110 patients with BMs at baseline

Characteristics	N=110
No. of BMs, n (%)	
1–4	83 (75.5)
>4	27 (24.5)
Diameter of largest BM, n (%)	
<10 mm	32 (29.1)
≥10 mm	78 (70.9)
Symptomatic BMs at PD-(L)1 inhibitor treatment initiation, n (%)	
Yes	22 (20.0)
No	88 (80.0)
Extracranial metastases, n (%)	
Yes	90 (81.8)
No	20 (18.2)
History of brain surgery, n (%)	
Yes	10 (9.1)
No	100 (90.9)
History of brain RT, n (%)	
Yes	
WBRT	26 (23.6)
SRT	14 (12.7)
SRS	6 (5.5)
No	64 (58.2)
uCRT*, n (%)	
Yes	
WBRT	6 (5.5)
SRT	12 (10.9)
SRS	8 (7.3)
No	84 (76.4)

*, uCRT was defined as the receipt of cranial irradiation at any point between the initiation of anti-PD-1/PD-L1 therapy and the first subsequent progression event. BMs, brain metastases; PD-(L)1, programmed death receptor (ligand) 1; RT, radiotherapy; uCRT, upfront cranial radiotherapy; SRS, stereotactic radiosurgery; SRT, stereotactic radiotherapy; WBRT, whole-brain radiation therapy.

Table S2 Cox proportional-hazards analyses for PFS in the whole study population

Variables	Univariate analysis			Multivariate analysis		
	HR	95% CI	P	HR	95% CI	P
Age (≤ 60 vs. > 60 years)	0.93	0.76-1.14	0.466			
Sex (male vs. female)	1.38	1.08-1.77	0.011	1.12	0.87-1.45	0.371
Smoking status (never vs. current or former)	1.10	0.98-1.23	0.111			
Histology (adenocarcinoma vs. non-adenocarcinoma)	1.04	0.84-1.29	0.733			
ECOG PS (≥ 2 vs. 0-1)	1.92	1.52-2.42	< 0.001	1.49	1.16-1.91	0.002
No. of organs harboring metastases (> 2 vs. ≤ 2)	2.60	2.06-3.29	< 0.001	1.94	1.48-2.53	< 0.001
Lines of PD-(L)1 inhibitor treatment (≥ 2 vs. 1)	1.71	1.39-2.11	< 0.001	1.53	1.22-1.91	< 0.001
Treatment regimen (monotherapy vs. combination therapy)	1.07	0.87-1.32	0.514			
BMs (yes vs. no)	1.52	1.20-1.91	< 0.001	1.13	0.88-1.44	0.353
PD-L1 status						
Positive	0.53	0.34-0.83	0.005	0.66	0.44-0.99	0.046
Unknown	0.65	0.44-0.97	0.033	0.67	0.42-1.06	0.085
Negative	Ref	-	-	Ref	-	-

BMs, brain metastases; CI, confidence interval; ECOG PS, Eastern Cooperative Oncology Group performance status; HR, hazard ratio; PD-(L)1, programmed death receptor (ligand) 1; PFS, progression-free survival.

Table S3 Cox proportional-hazards analyses for OS in the whole study population

Variables	Univariate analysis			Multivariate analysis		
	HR	95% CI	P	HR	95% CI	P
Age (≤ 60 vs. > 60 years)	0.93	0.70-1.24	0.623			
Sex (male vs. female)	1.17	0.99-1.39	0.063	1.19	0.84-1.68	0.340
Smoking status (never vs. current or former)	1.13	0.97-1.33	0.114			
Histology (adenocarcinoma vs. non-adenocarcinoma)	1.02	0.75-1.38	0.902			
ECOG PS (≥ 2 vs. 0-1)	1.87	1.37-2.54	< 0.001	1.36	0.96-1.94	0.089
No. of organs harboring metastases (> 2 vs. ≤ 2)	2.47	1.81-3.36	< 0.001	2.07	1.45-2.97	< 0.001
Line of PD-(L)1 inhibitor treatment (≥ 2 vs. 1)	1.31	0.98-1.74	0.071	1.14	0.84-1.55	0.393
Treatment regimen (monotherapy vs. combination therapy)	1.05	0.79-1.40	0.722			
BMs (yes vs. no)	1.24	0.90-1.70	0.182			
PD-L1 status						
Positive	0.69	0.39-1.24	0.214	0.97	0.53-1.77	0.918
Unknown	0.64	0.38-1.08	0.095	0.74	0.44-1.26	0.271
Negative	Ref	-	-	Ref	-	-

BM, brain metastases; CI, confidence interval; ECOG PS, Eastern Cooperative Oncology Group performance status; HR, hazard ratio; OS, overall survival; PD-(L)1, programmed death receptor (ligand) 1.

Table S4 Predictors of the development of BMs for patients without baseline BMs who were treated with anti-PD-(L)1 therapy

Variables	Univariate analysis			Multivariate analysis		
	HR	95% CI	P	HR	95% CI	P
Age (≤ 60 vs. > 60 years)	1.27	0.83-1.96	0.272			
Sex (female vs. male)	0.75	0.36-1.55	0.430			
Smoking status (never vs. current or former)	0.73	0.40-1.34	0.308			
Histology (adenocarcinoma vs. non-adenocarcinoma)	2.03	0.74-5.54	0.167			
ECOG PS (≥ 2 vs. 0-1)	1.59	0.53-4.76	0.405			
No. of organs harboring metastases (> 2 vs. ≤ 2)	5.60	1.88-16.67	0.002	5.07	1.70-15.10	0.004
Primary tumor size (> 2 vs. ≤ 2 cm)	6.39	1.88-21.71	0.003	5.79	1.70-19.69	0.005
Line of PD-(L)1 inhibitor treatment (≥ 2 vs. 1)	2.03	0.84-4.94	0.117			
Treatment regimen (monotherapy vs. combination therapy)	0.54	0.21-1.39	0.200			
N stage (N1-3 vs. N0)	1.63	0.55-4.84	0.381			
PD-L1 status						
Positive	0.59	0.18-1.96	0.388			
Unknown	0.42	0.14-1.23	0.112			
Negative	Ref	-	-			

BMs, brain metastases; CI, confidence interval; ECOG PS, Eastern Cooperative Oncology Group performance status; HR, hazard ratio; PD-(L)1, programmed death receptor (ligand) 1.

Table S5 Univariate and multivariate Cox proportional-hazards model for OS in patients with BMs

Variables	Univariate analysis			Multivariate analysis		
	HR	95% CI	P	HR	95% CI	P
Age (≤ 60 vs. > 60 years)	0.85	0.50-1.46	0.563			
Sex (female vs. male)	1.38	1.03-1.85	0.030	1.66	0.91-3.04	0.030
Smoking status (never vs. current or former)	1.00	0.74-1.36	0.995			
Histology (adenocarcinoma vs. non-adenocarcinoma)	0.93	0.66-1.31	0.674			
ECOG PS (≥ 2 vs. 0-1)	1.36	0.74-2.49	0.325			
Extracranial metastases (yes vs. no)	2.01	0.93-4.32	0.075	1.68	0.76-3.71	0.098
Lines of PD-(L)1 inhibitor treatment (≥ 2 vs. 1)	1.77	0.97-3.23	0.065	1.30	0.69-2.47	0.153
Treatment regimen (monotherapy vs. combination therapy)	1.21	0.71-2.08	0.478			
Symptomatic BMs (yes vs. no)	0.72	0.34-1.53	0.390			
Diameter of largest BM (≥ 10 vs. < 10 mm)	0.98	0.55-1.78	0.956			
Receipt of uCRT (yes vs. no)	0.50	0.25-0.99	0.045	0.55	0.28-1.10	0.055
PD-L1 status						
Positive	0.65	0.21-2.06	0.467			
Unknown	0.67	0.24-1.89	0.448			
Negative	Ref	-	-			

BMs, brain metastases; CI, confidence interval; ECOG PS, Eastern Cooperative Oncology Group performance status; HR, hazard ratio; OS, overall survival; PD-(L)1, programmed death receptor (ligand) 1; uCRT, upfront cranial radiotherapy.

Table S6 Baseline characteristics of patients with 1-4 BMs, stratified according to the receipt of uCRT

Characteristics	Total (N=83)	uCRT group (N=18)	Non-uCRT group (N=65)	P value [†]
Median age at initiation of PD-(L)1 inhibitor treatment, years (range)	60 (34-74)	60 (41-74)	61 (34-72)	0.891
Sex, n (%)				
Male	65 (78.3)	15 (83.3)	50 (76.9)	0.794
Female	18 (21.7)	3 (16.7)	15 (23.1)	
Smoking status at PD-(L)1 inhibitor treatment initiation, n (%)				
Current	26 (31.3)	7 (38.9)	19 (29.2)	0.491
Former	40 (48.2)	9 (50.0)	31 (47.7)	
Never	17 (20.5)	2 (11.1)	15 (23.1)	
ECOG PS, n (%)				
0-1	61 (73.5)	13 (72.2)	48 (73.8)	1.00
≥2	22 (26.5)	5 (27.8)	17 (26.2)	
Histology, n (%)				
Adenocarcinoma	71 (85.5)	15 (83.3)	56 (86.2)	0.473
Squamous cell	9 (10.8)	3 (16.7)	6 (9.2)	
NSCLC, other	3 (3.6)	0 (0.0)	3 (4.6)	
PD-L1 status, n (%)				
Positive	22 (26.5)	4 (22.2)	18 (27.7)	0.608
Negative	5 (6.0)	0 (0.0)	5 (7.7)	
Unknown	56 (67.5)	14 (77.8)	42 (64.6)	
Extracranial metastases, n (%)				
Yes	64 (77.1)	12 (66.7)	52 (80.0)	0.382
No	19 (22.9)	6 (33.3)	13 (20.0)	
PD-(L)1 inhibitor therapy line, range 1-7				
1	31 (37.3)	9 (50.0)	22 (33.8)	0.392
2	22 (26.5)	3 (16.7)	19 (29.2)	
≥3	30 (36.1)	6 (33.3)	24 (36.9)	
Type of inhibitor				
PD-1	77 (92.8)	15 (83.3)	62 (95.4)	0.113
PD-L1	6 (7.2)	3 (16.7)	3 (4.6)	
Monotherapy or combination				
Anti-PD-1/PD-L1 monotherapy				
1 st line	9 (10.8)	1 (5.6)	8 (12.3)	0.235
≥2 nd line	35 (42.2)	5 (27.8)	30 (46.2)	
Combination*				
1 st line	22 (26.5)	8 (44.4)	14 (21.5)	
≥2 nd line	17 (20.5)	4 (22.2)	13 (20.0)	
Diameter of largest BM, n (%)				
<10 mm	27 (32.5)	3 (16.7)	24 (36.9)	0.105
≥10 mm	56 (67.5)	15 (83.3)	41 (63.1)	
Symptomatic BMs at PD-(L)1 inhibitor treatment initiation, n (%)				
Yes	13 (15.7)	6 (33.3)	7 (10.8)	0.049
No	70 (84.3)	12 (66.7)	58 (89.2)	

[†], patients treated with and without upfront cranial radiotherapy are compared; *, combination of anti-PD-1/PD-L1 therapy and chemotherapy or anti-PD-1/PD-L1 therapy and EGFR-TKIs. BMs, brain metastases; ECOG PS, Eastern Cooperative Oncology Group performance status; NSCLC, non-small cell lung cancer; PD-(L)1, programmed death receptor (ligand) 1; uCRT, upfront cranial radiotherapy.