

Figure S1 The CT image of the liver metastasis after 6 treatment cycles (THP × 6), a hypodense nodule of about 0.8 cm × 0.5 cm in size in hepatic S8 (marked with arrow). CT, computed tomography; T, docetaxel; H, trastuzumab; P, pertuzumab.

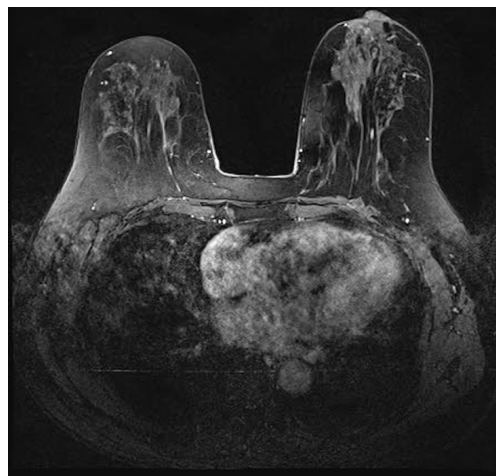


Figure S2 Breast MRI after 17 cycles of treatment demonstrated only mild patchy enhancement without a definitive lesion. MRI, magnetic resonance imaging.

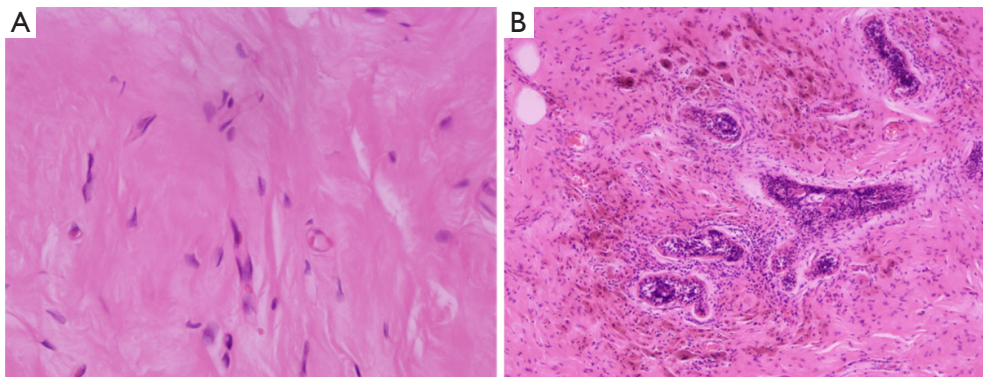


Figure S3 Photomicrographs of the specimen after left mastectomy. Interstitial fibrosis with vitreous degeneration (A, ×40 magnification) and lymphocytic infiltration (B, ×100 magnification) were stained with hematoxylin and eosin, with no evidence of cancer cells, indicating a complete pathological response.