

Cardiothoracic Surgery Registration Committee of the Netherlands Heart Registration

Dr. S Bramer, Amphia Hospital, Breda

Dr. WJP van Boven, Amsterdam University Medical Center, location AMC, Amsterdam

Dr. ABA Vonk, Amsterdam University Medical Center, location VUmc, Amsterdam

Drs. BMJA Koene, Catharina Hospital, Eindhoven

Dr. J.A. Bekkers, Erasmus Medical Center, Rotterdam

Dr. G.J.F. Hoohenkerk, Haga Hospital, The Hague

Dr. A.L.P. Markou, Isala Hospitals, Zwolle

Drs. A. de Weger, Leiden University Medical Center, Leiden

Dr. P Segers, Maastricht UMC+, Maastricht

Drs. F Porta, Medical Center Leeuwarden, Leeuwarden

Dr. R.G.H. Speekenbrink, Medical Spectrum Twente, Enschede

Dr. W Stooker, LVG, Amsterdam

Drs. W.W.L. Li, Radboud University Medical Center, Nijmegen

Drs. EJ Daeter, St. Antonius Hospital, Nieuwegein

Dr. NP van der Kaaij, University Medical Center Utrecht, Utrecht

Dr. Y. Douglas, University Medical Center Groningen, Groninge

**Table S1** Missing data specification

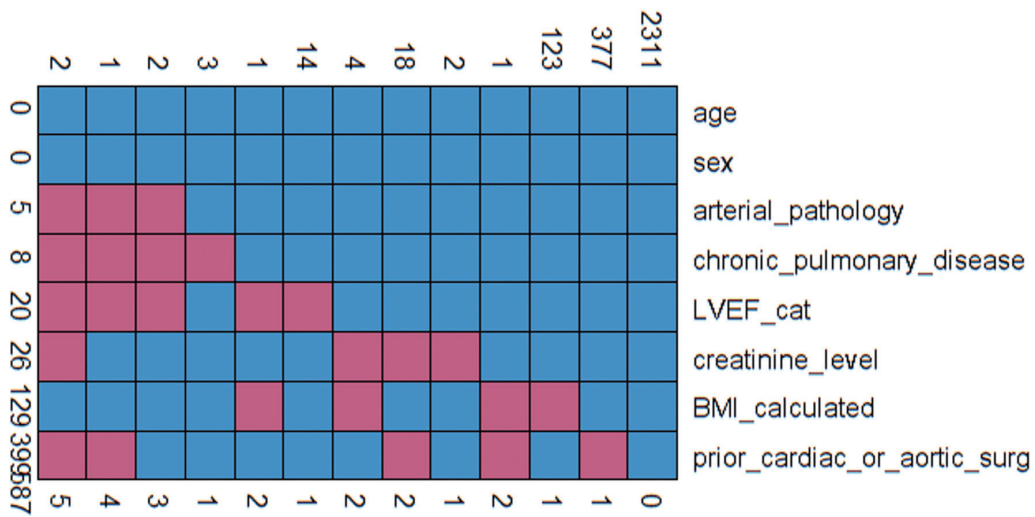
Variable	Missing percentage female population (N=887)	Missing percentage male population (N=1,972)
Age	0	0
Body mass index (kg/m <sup>2</sup> )	5.3	4.2
Creatinine level (μmol/L)	1.1	0.8
Creatinine (>200 μmol/L)	0	0
Logistic EuroSCORE	0.3	0.3
Diabetes mellitus	3.4	2.7
LVEF	0.6	0.8
Chronic pulmonary disease	0.5	0.2
Chronic arterial pathology	0.3	0.1
Neurological dysfunction	0.3	0.1
Active endocarditis	0.5	0.2
Recent myocardial infarction	0.3	0.2
PA pressure (mmHg)	1.2	1.5
Prior CVA	32.2	31.7
Dialysis	31.6	27.7
NYHA class	39.6	37.0
CCS class IV	30.4	26.2
Prior PCI	7.6	6.9
Prior aortic surgery	13.5	14.1
Prior cardiac surgery	0.2	0.1
Surgery type	0	0
Concomitant arch surgery	0.1	0
Concomitant descending aortic surgery	0	0
Concomitant CABG	0	0
Concomitant mitral valve surgery	0	0
Concomitant pulmonary valve surgery	0	0
Concomitant tricuspid valve surgery	0	0
Other concomitant surgery	0	0
Circulatory arrest performed	0.3	0.1
In-hospital mortality	0	0
Admission in days	0.2	0.4
Perioperative myocardial infarction	36	33.6
Pneumonia	11.7	12.7
Urinary tract infection	11.7	12.7

**Table S1** (continued)

**Table S1** (continued)

Variable	Missing percentage female population (N=887)	Missing percentage male population (N=1,972)
Reintubation during admission	11.6	12.8
Extended intubation (exceeding 24 hours)	0.6	0.4
Readmission to ICU	0.9	1.1
CVA with permanent damage	0.6	0.5
CVA without permanent damage	12.4	13.6
Renal failure	0.7	0.5
Gastrointestinal complications	0.6	0.4
Vascular complications	0.9	0.5
Heart rhythm complications	2.7	3.3
Rethoracotomy	33.8	33.8
Deep sternal wound infection	37.8	38.4

CABG, coronary artery bypass grafting; CCS, Canadian Cardiovascular Society; CPB, cardiopulmonary bypass; CVA, cerebrovascular accident; LVEF, left ventricular ejection fraction; NYHA, New York Heart Association; PA, pulmonary artery; PCI, percutaneous coronary intervention.



**Figure S1** Missing data pattern plot.

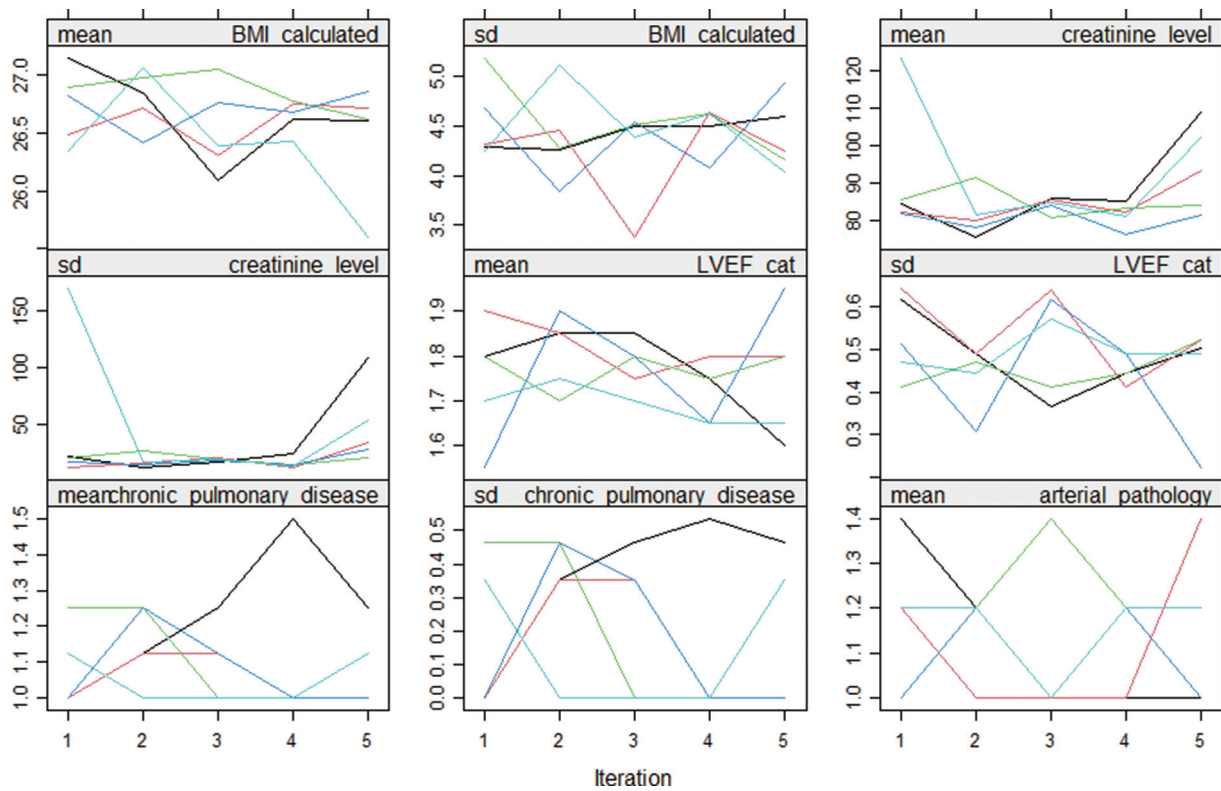


Figure S2 Imputation plots 1/2.

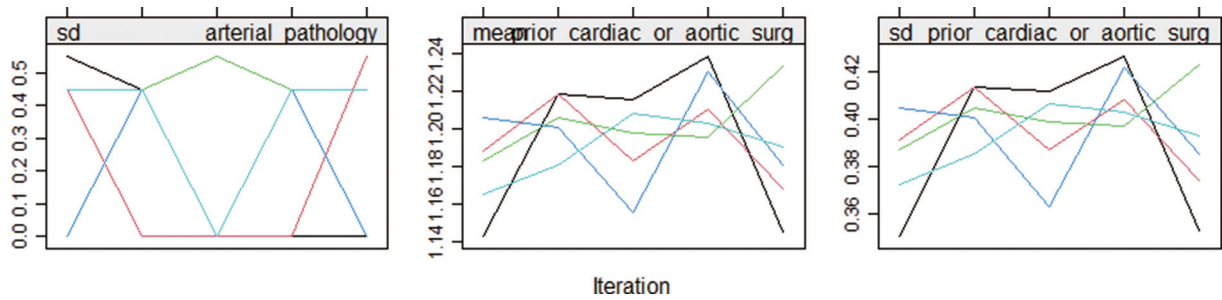


Figure S3 Imputation plots 2/2.

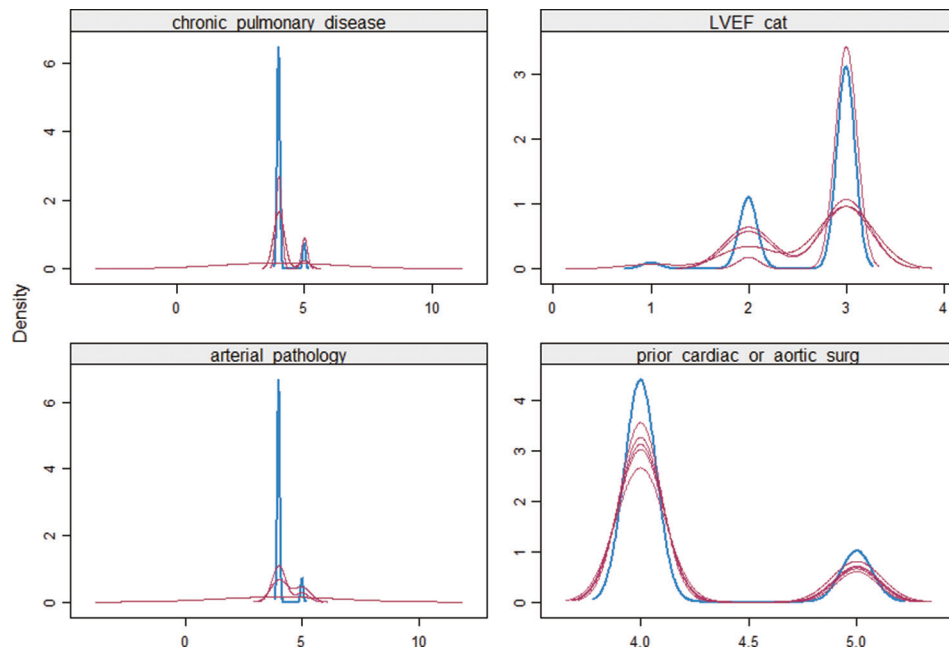


Figure S4 Density plot of imputed data.

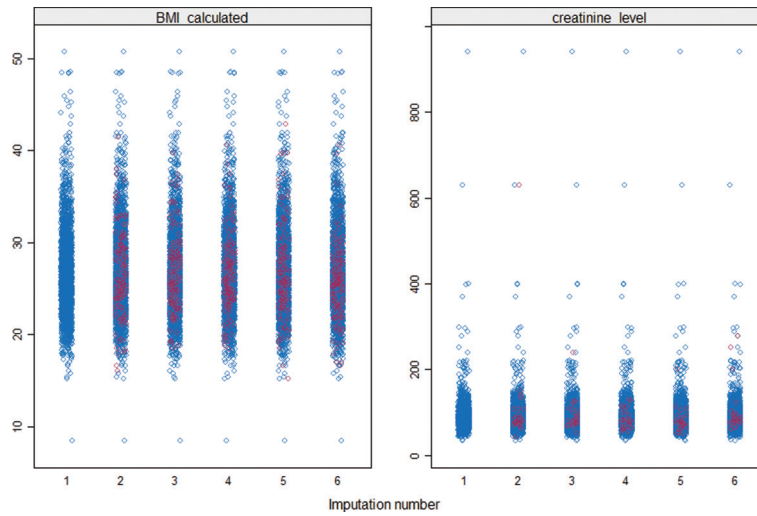


Figure S5 Stripplot of imputed data.