

Figure S1 PRISMA flow diagram.

		Risk of bias domains							
		D1	D2	D3	D4	D5	D6	D7	Overall
Study	Adams, 2024	+	+	+	+	+	-	+	-
	Blasco-Turrion, 2024	+	+	+	+	+	-	+	-
	Donal, 2025	+	+	+	+	+	-	+	-
	Kitamura, 2021	+	+	+	+	+	-	+	-
	Kodali, 2023 (Dec)	+	+	+	+	+	-	+	-
	Kodali, 2023 (May)	+	+	-	-	+	-	+	-
	Lurz, 2024	+	+	-	+	+	-	+	-
	Lurz, 2021	+	+	-	-	+	-	-	-
	Naik, 2025	+	+	-	+	+	-	+	-
	Nickenig, 2021	+	+	+	+	+	-	+	-
	Sorajja, 2023	+	+	+	+	+	-	+	-
	Tang, 2025	+	+	+	+	+	-	+	-
	Webb, 2022	+	+	+	+	-	-	+	-

Domains:
D1: Bias due to confounding.
D2: Bias due to selection of participants.
D3: Bias in classification of interventions.
D4: Bias due to deviations from intended interventions.
D5: Bias due to missing data.
D6: Bias in measurement of outcomes.
D7: Bias in selection of the reported result.

Judgement
- Moderate
+ Low

Figure S2 ROBINS-I V2 assessment for risk of bias.

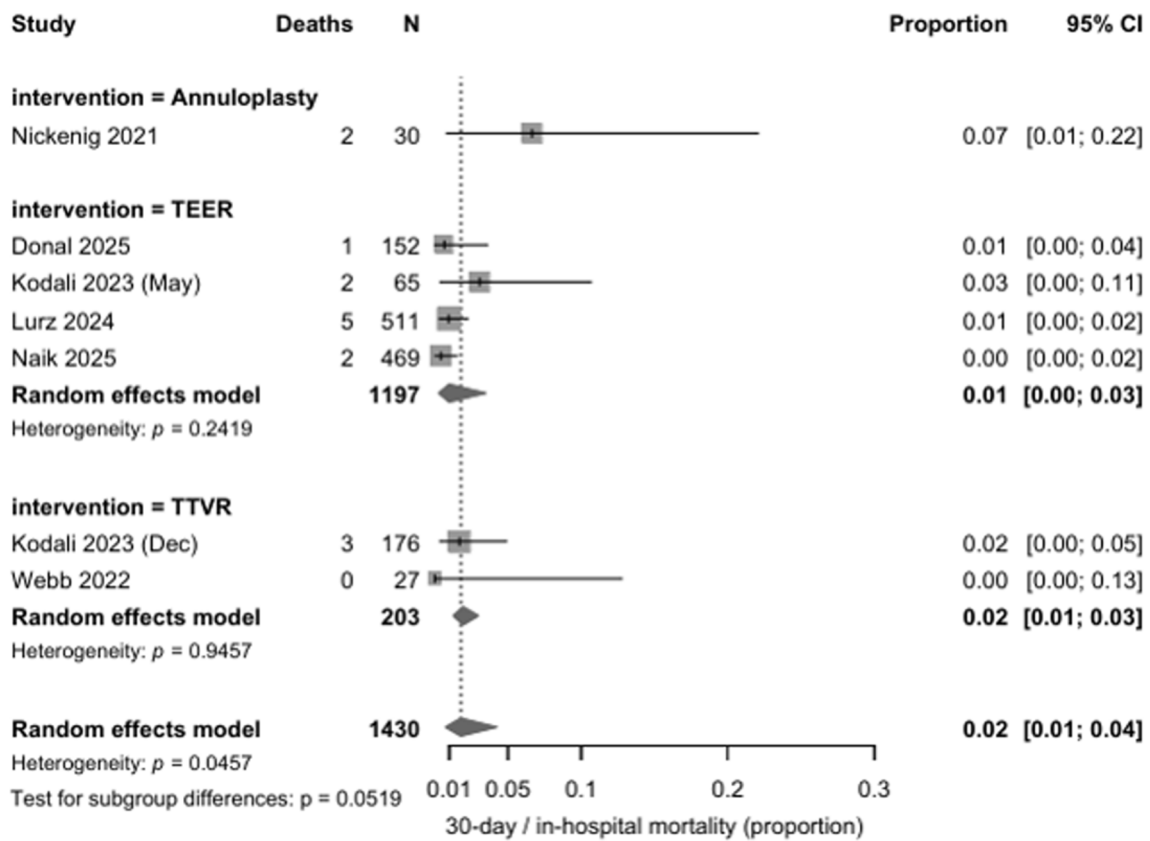


Figure S3 Forest plot: 30-day or in-hospital mortality.

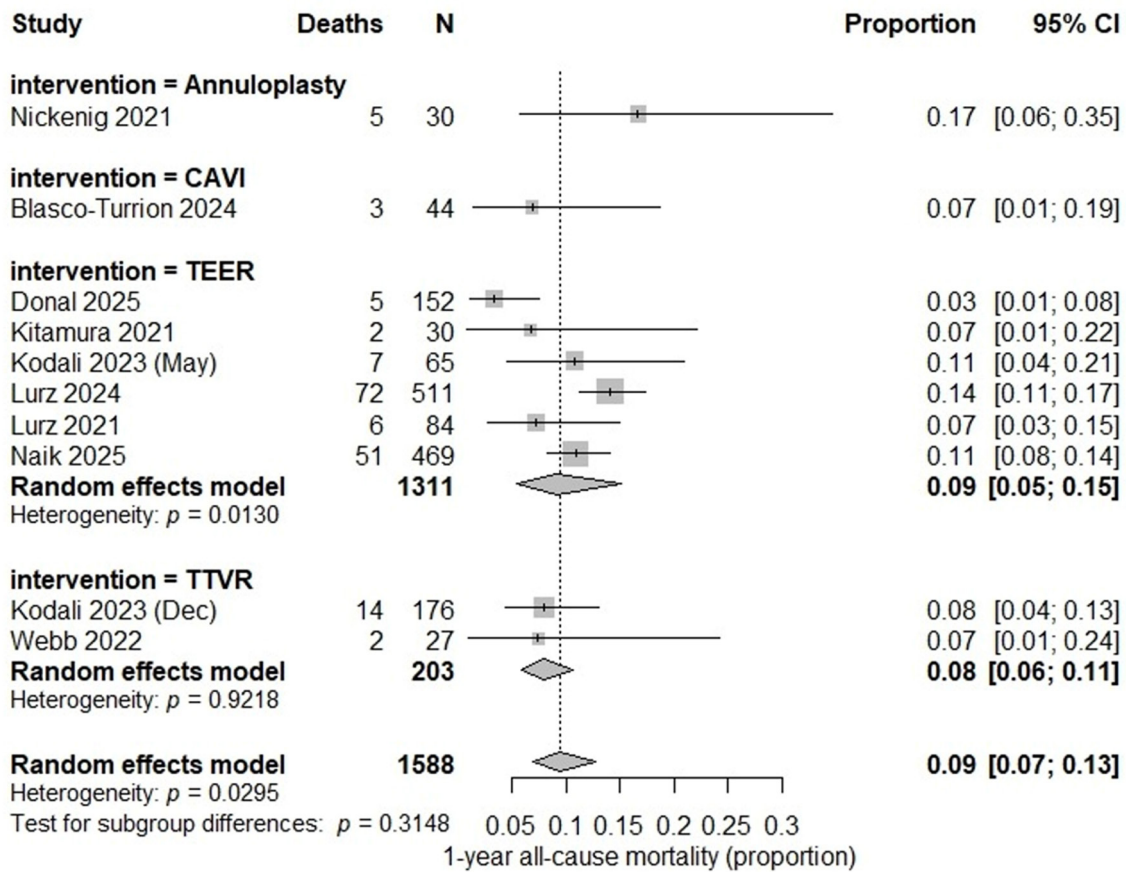


Figure S4 Forest plot: 1 year mortality.

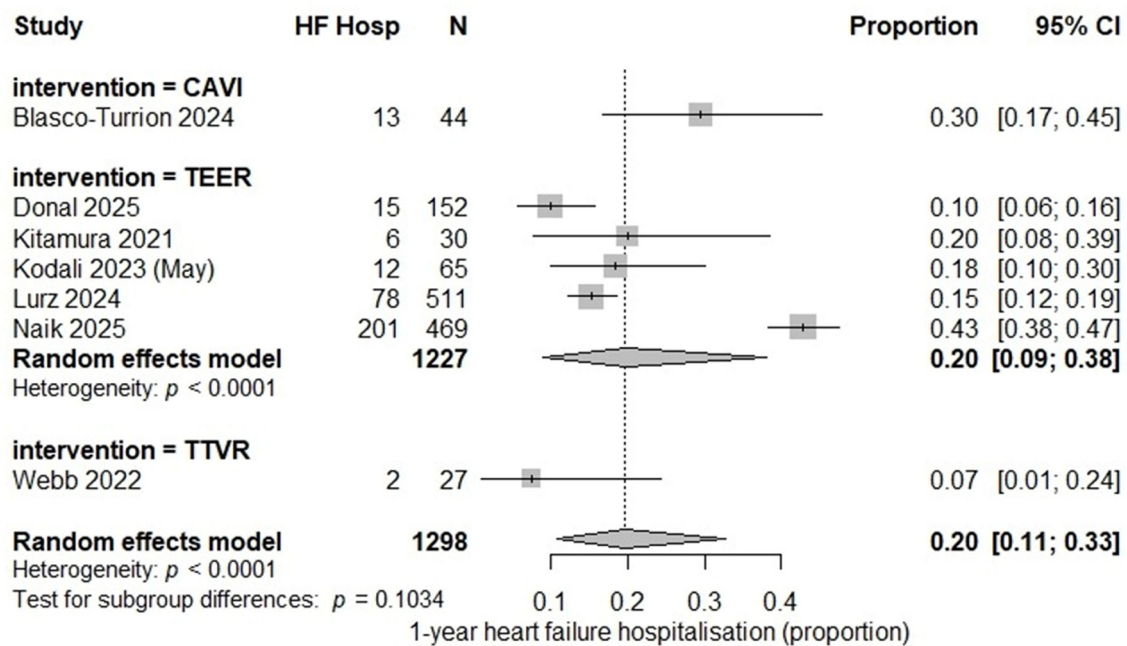


Figure S5 Forest plot: 1 year heart failure hospitalization.

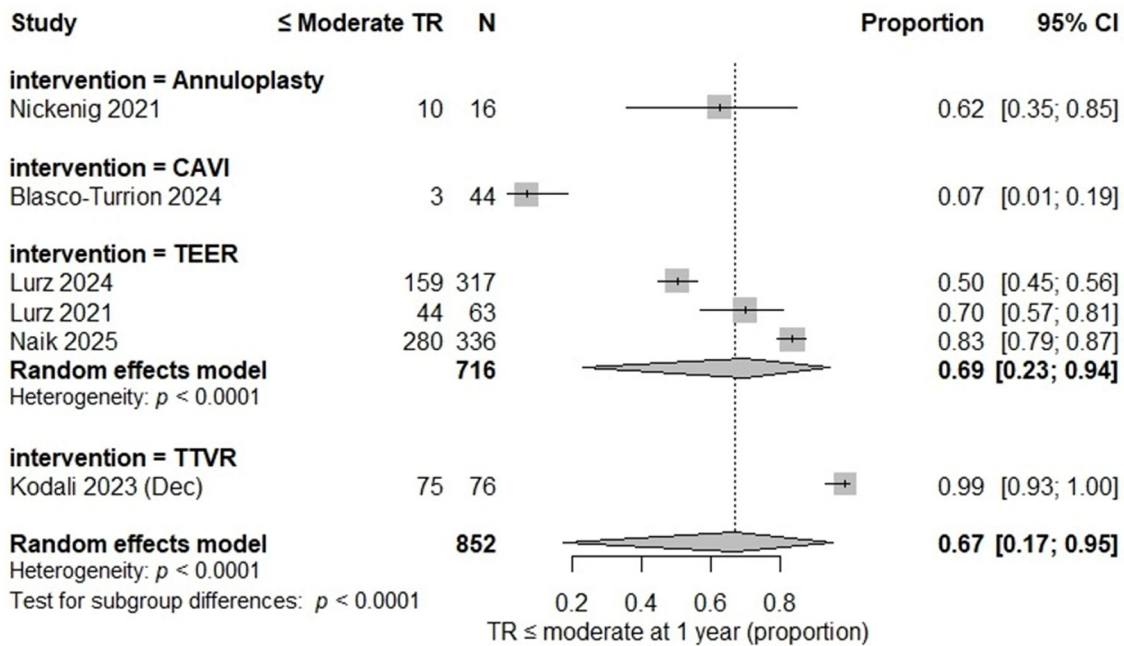


Figure S6 Forest plot: tricuspid regurgitation moderate or less at 1 year.

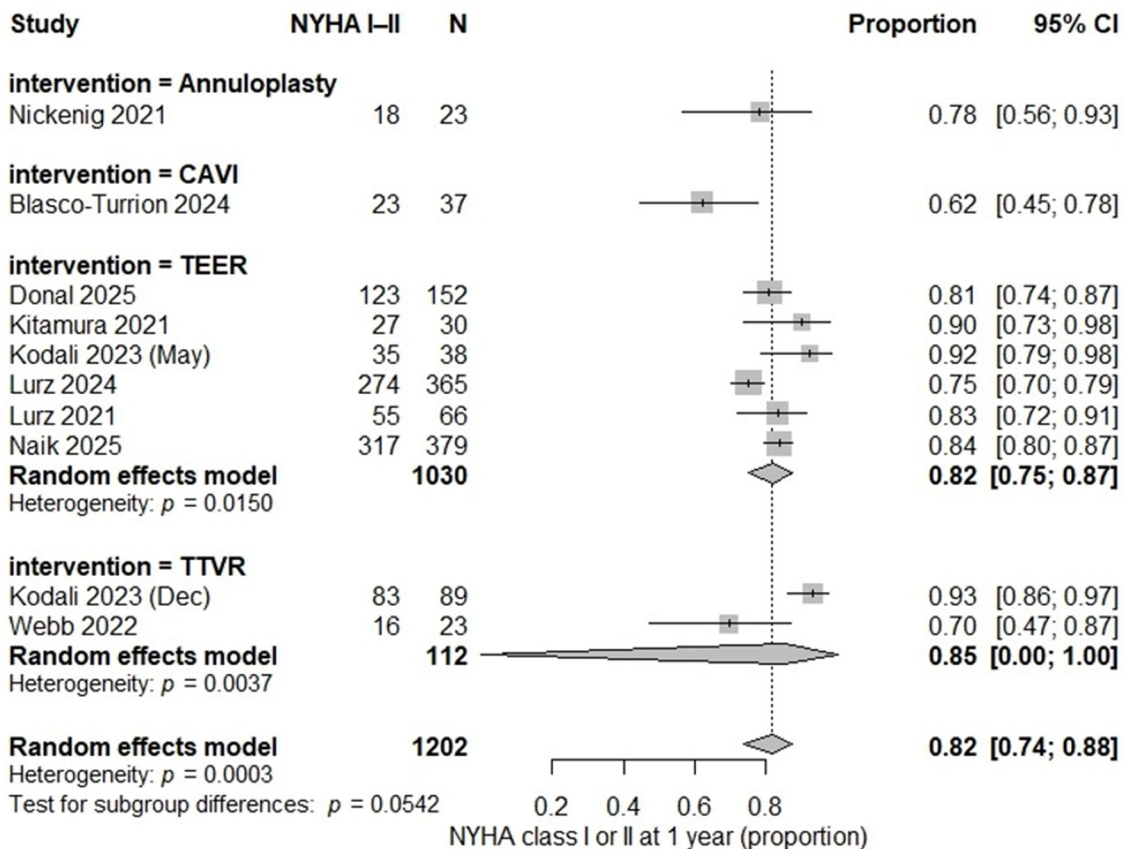


Figure S7 Forest plot NYHA I-II at 1 year.

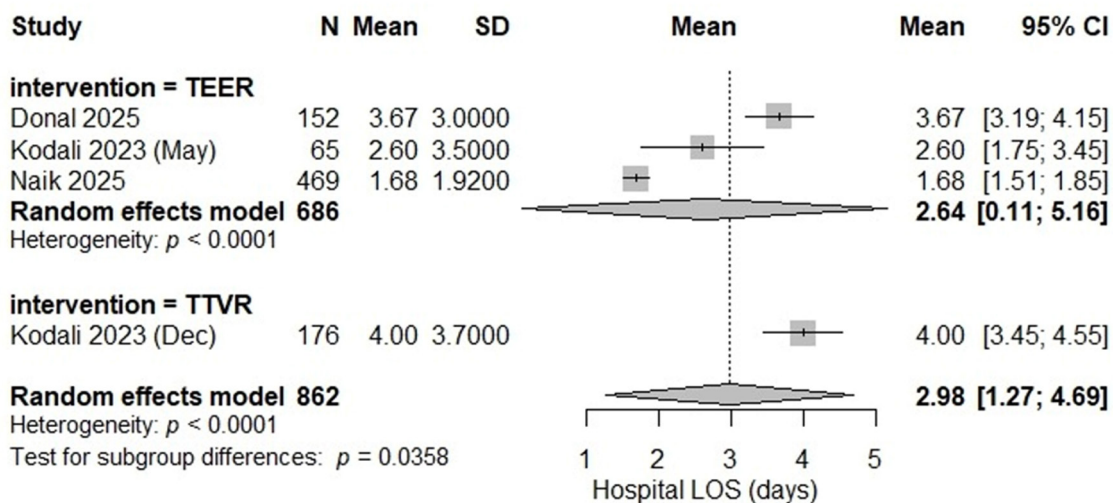


Figure S8 Forest plot mean hospital length of stay.

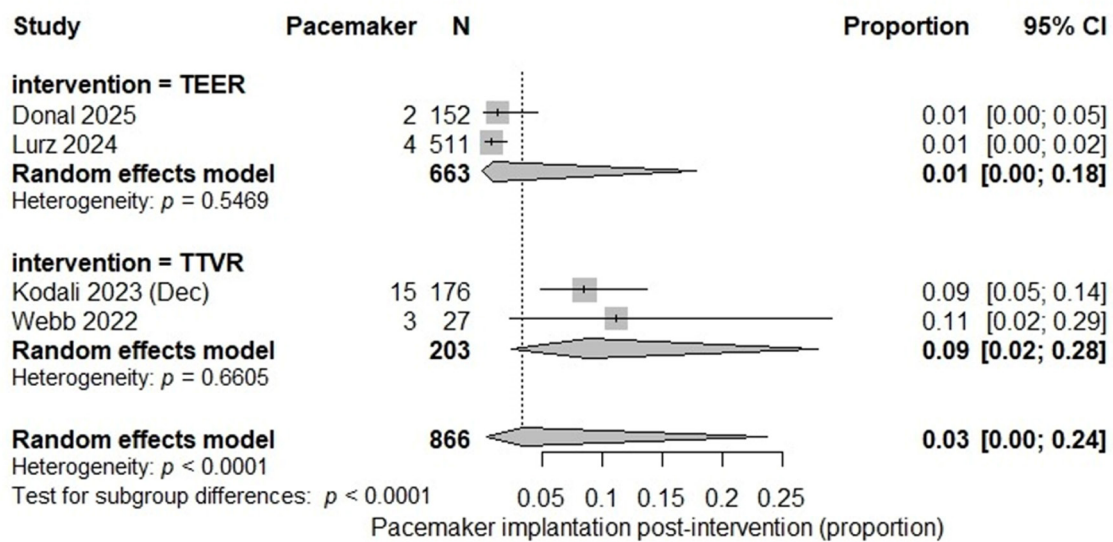


Figure S9 Forest plot: pacemaker implantation rates post TTVI.

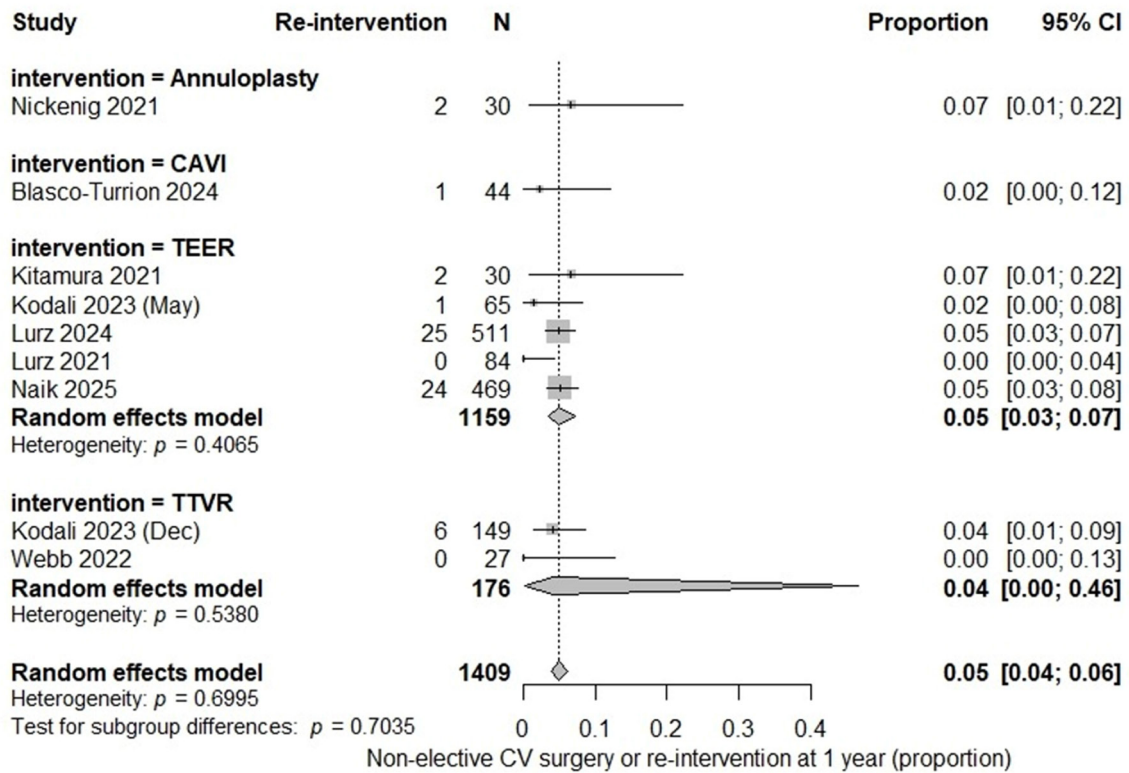


Figure S10 Forest plot: rates of non-elective cardiovascular surgery or re-intervention at 1 year.

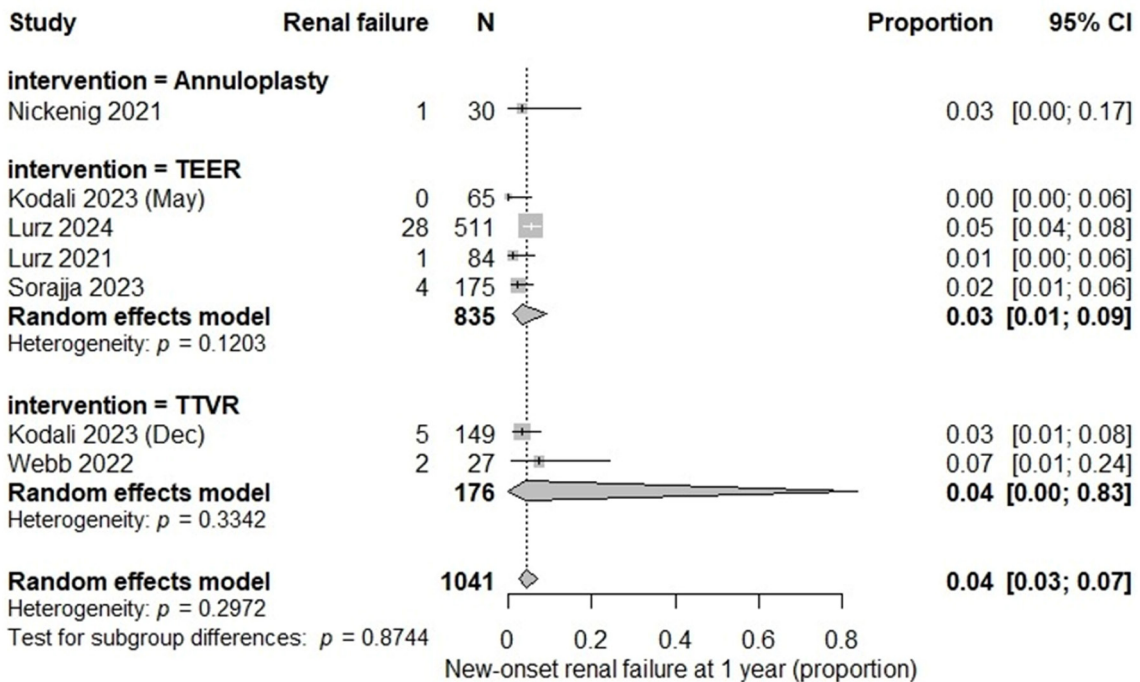


Figure S11 Forest plot: new onset renal failure at 1 year.

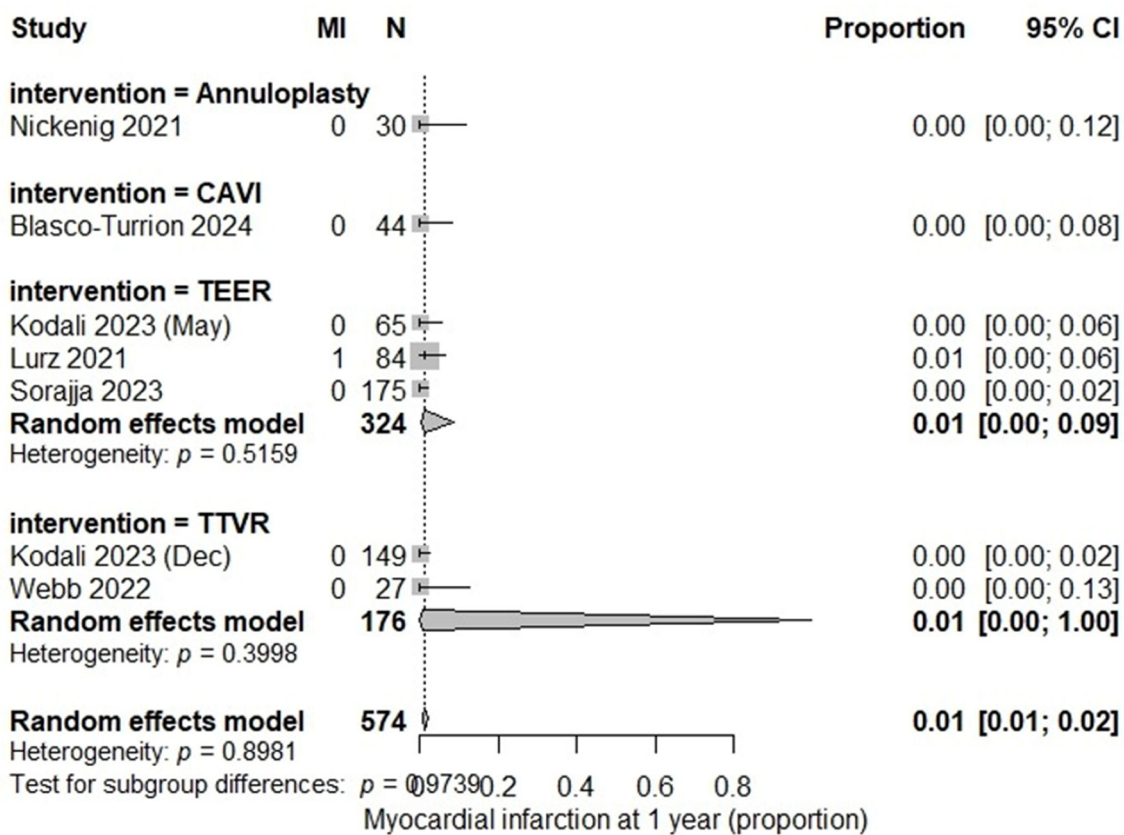


Figure S12 Forest plot: myocardial infarction at 1 year.

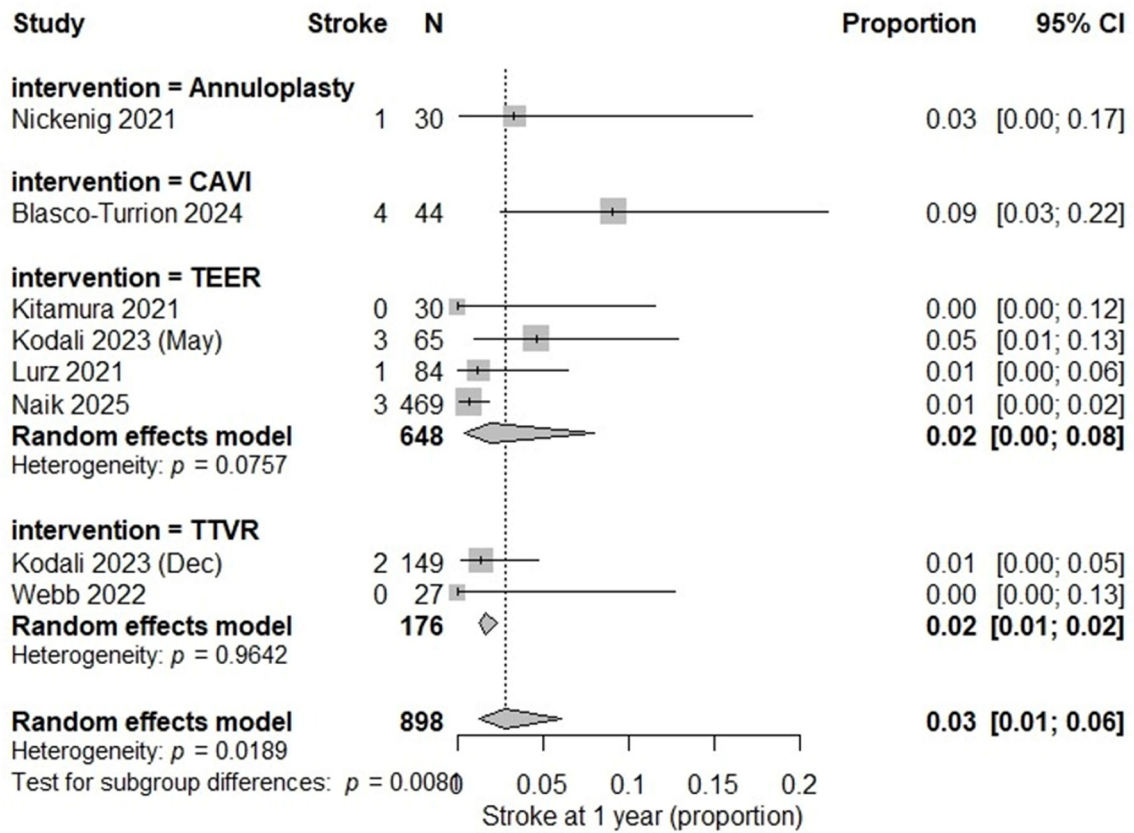


Figure S13 Forest plot: stroke rate at 1 year.

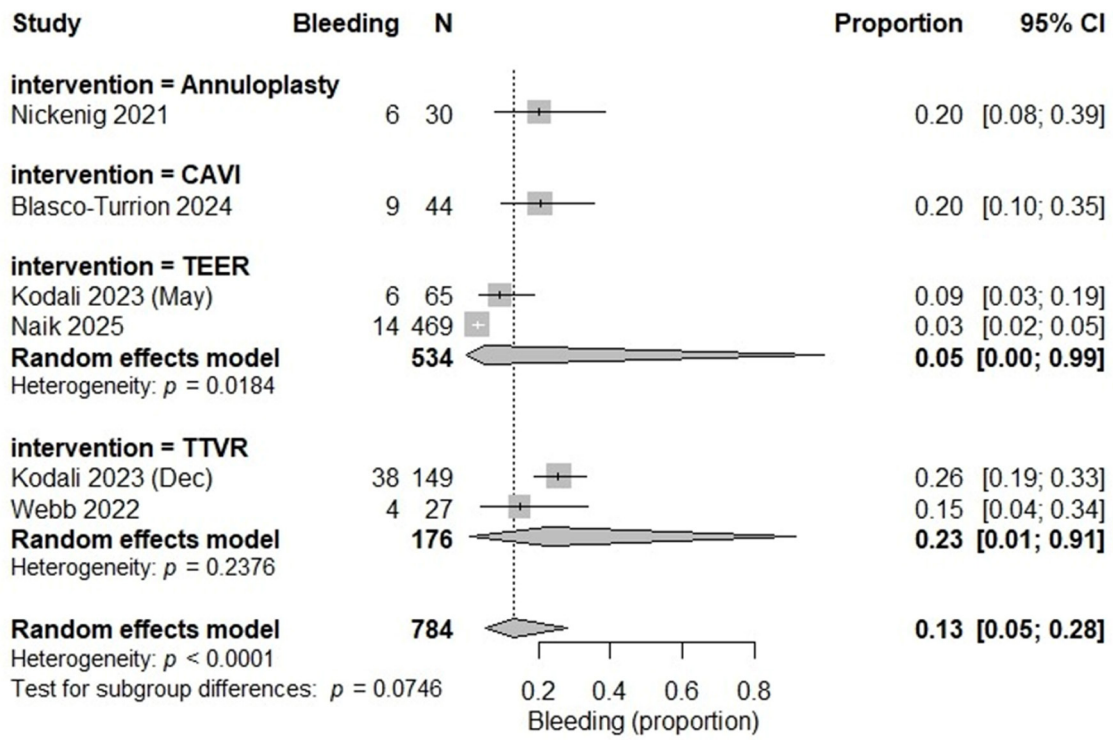


Figure S14 Forest plot: major bleeding at 1 year.

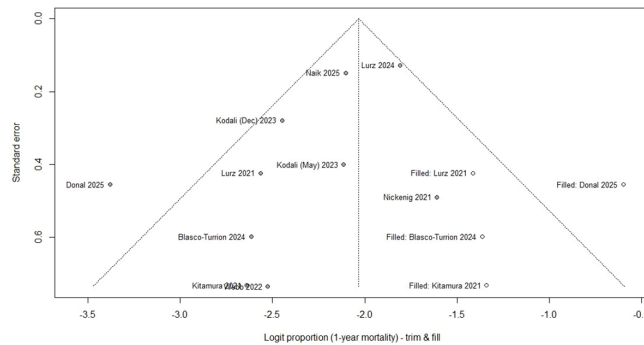


Figure S15 Trim-and-fill analysis of 1 year mortality rates.

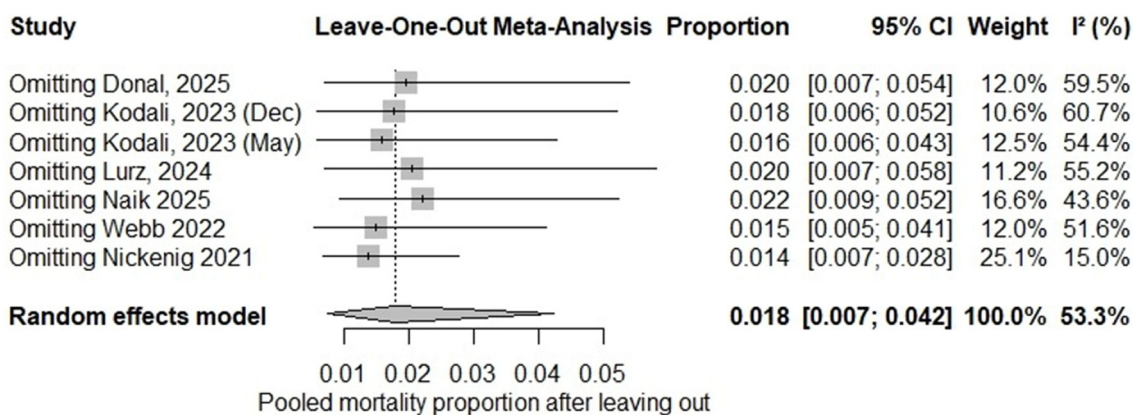


Figure S16 Leave-one-out analyses for 30-day mortality.

Leave-One-Out Meta-Analysis: 1-Year All-Cause Mortality

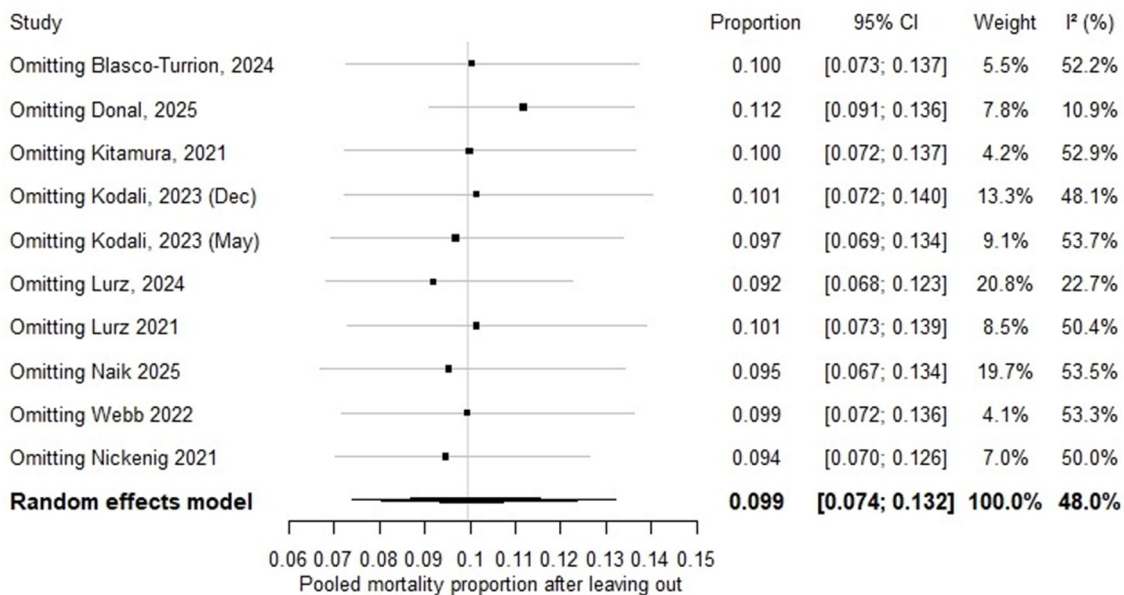


Figure S17 Leave-one-out analyses for 1 year mortality.

Leave-One-Out Meta-Analysis: 1-Year Heart Failure Hospitalisation

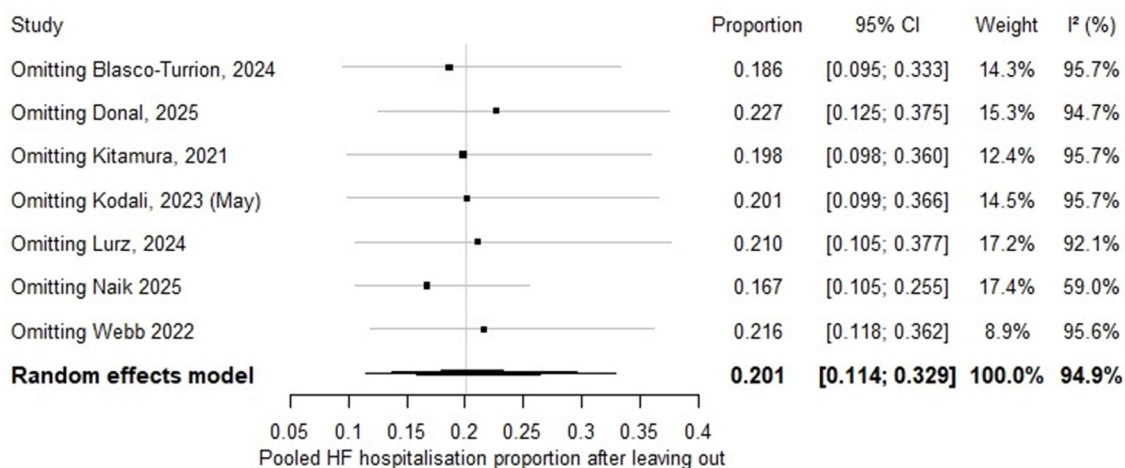


Figure S18 Leave-one-out analyses for 1 year heart failure hospitalization.

Leave-One-Out Meta-Analysis: TR ≤ Moderate at 1 Year

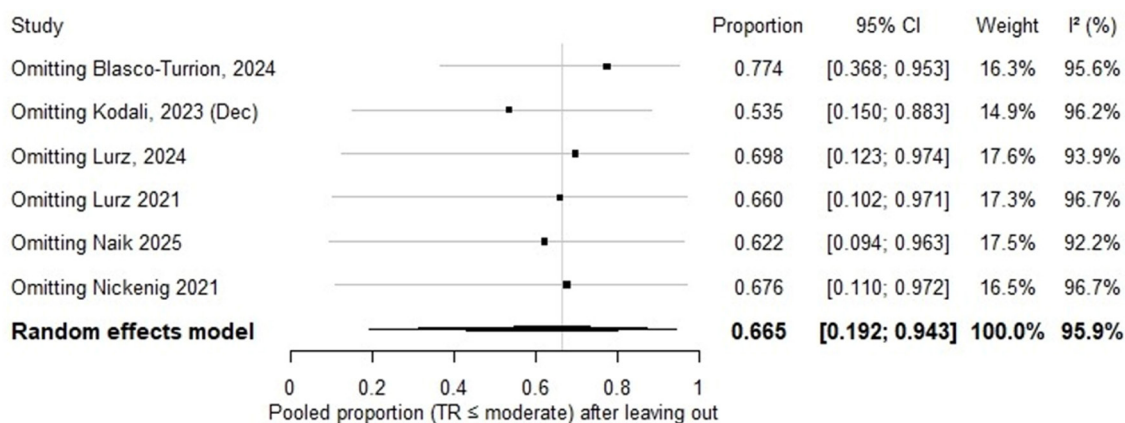


Figure S19 Leave-one-out analyses for rates of tricuspid regurgitation moderate or less at 1 year.

Leave-One-Out Meta-Analysis

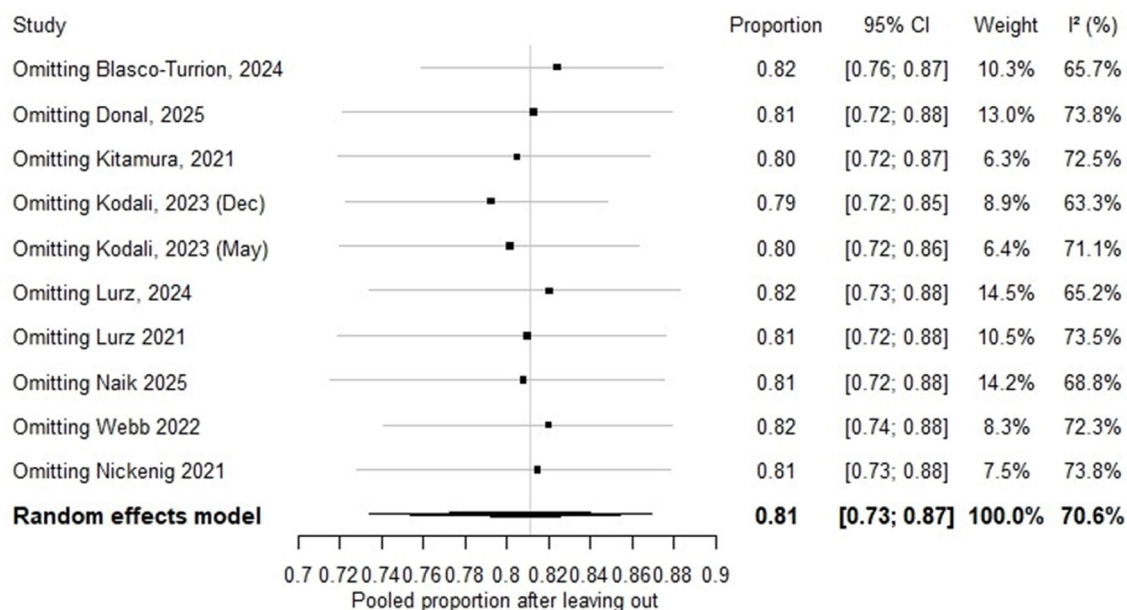


Figure S20 Leave-one-out analyses for NYHA I-II classification at 1 year.

Leave-One-Out Meta-Analysis: Hospital Length of Stay

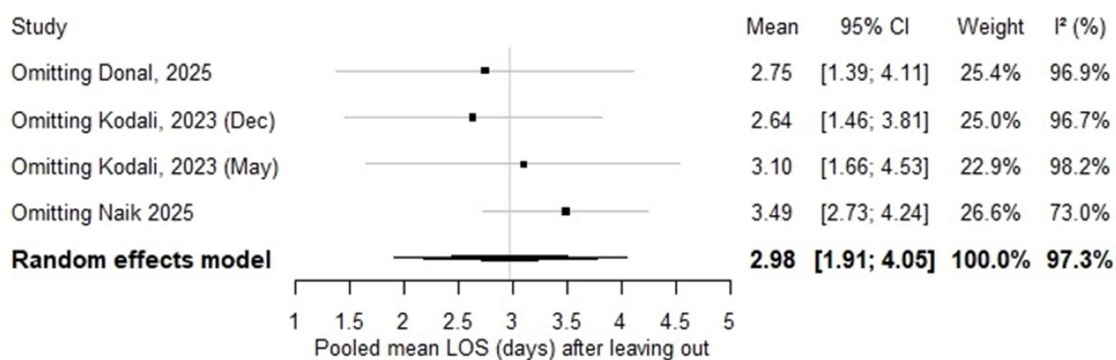


Figure S21 Leave-one-out analyses for hospital length of stay.

Leave-One-Out Meta-Analysis: Pacemaker Implantation

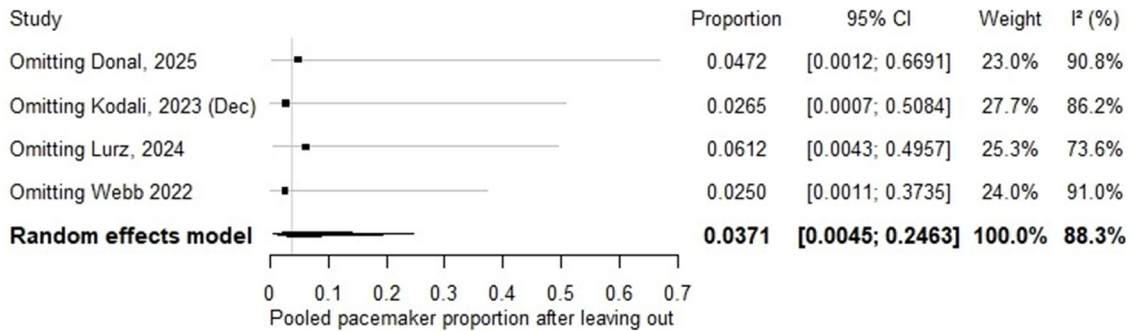


Figure S22 Leave-one-out analyses for pacemaker implantation rates.

Leave-One-Out Meta-Analysis: Stroke at 1 Year

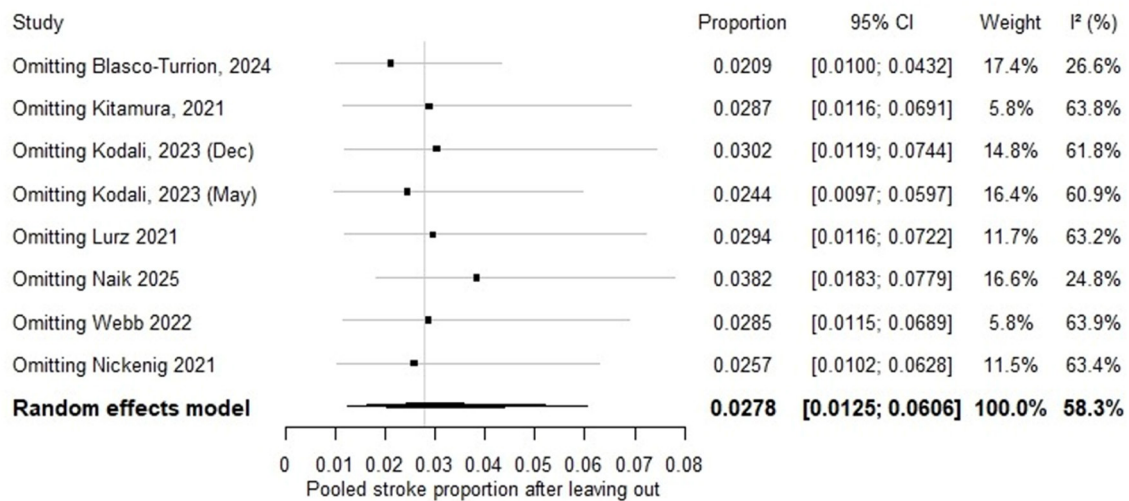


Figure S23 Leave-one-out analyses for strokes at 1 year.

Leave-One-Out Meta-Analysis: Bleeding

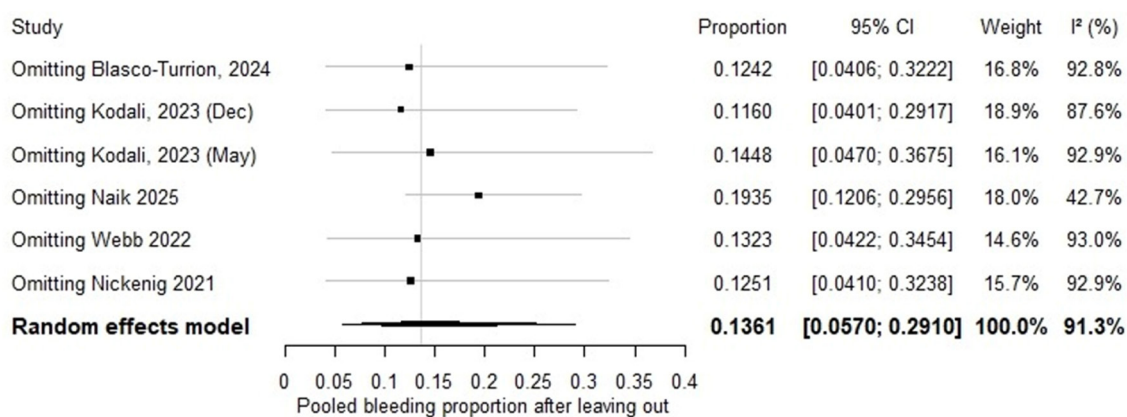


Figure S24 Leave-one-out analyses for severe bleeding at 1 year.