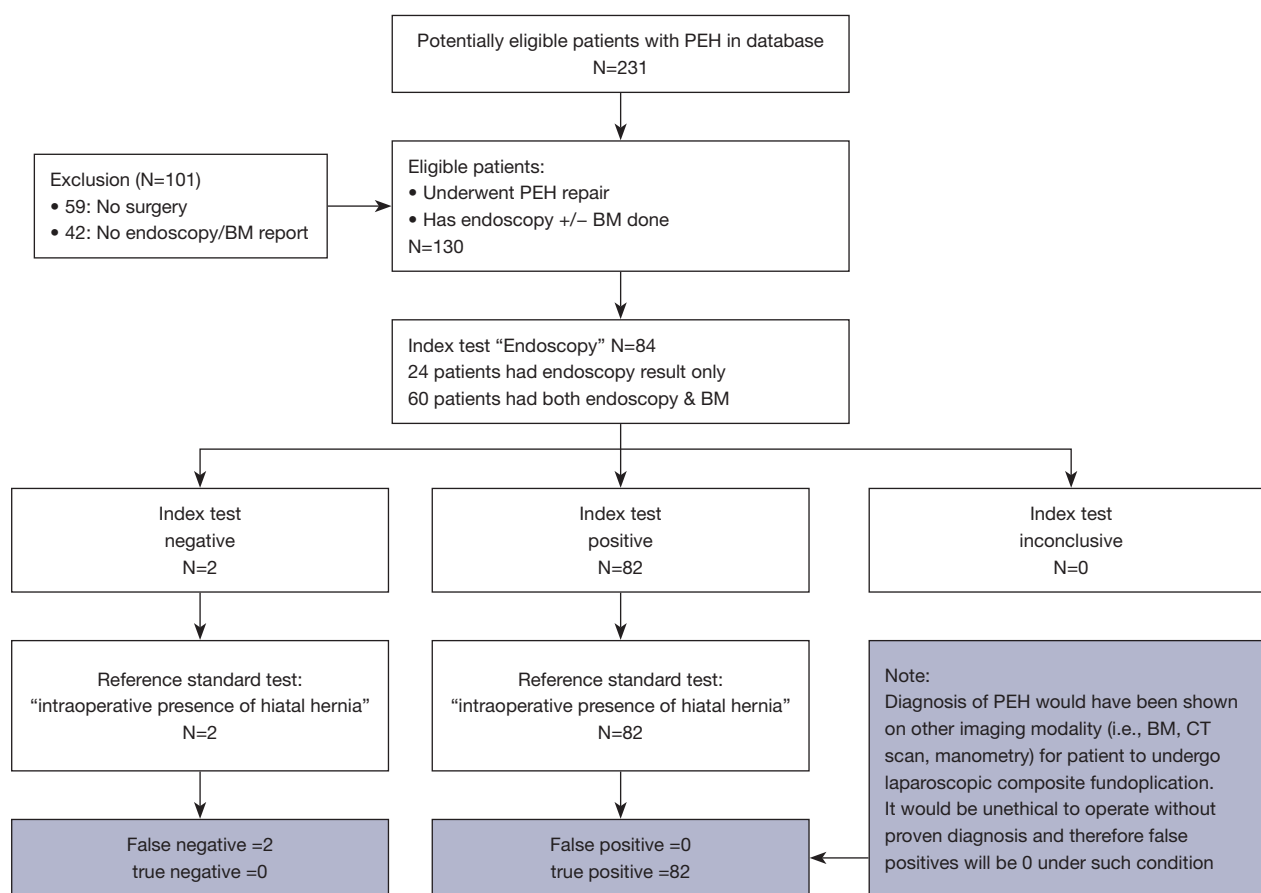


Table S1 Explanatory legend

Abbreviation	Meaning
AGV	Acute gastric volvulus
BM	Barium meal study
CD	Crural diaphragm
CGV	Chronic gastric volvulus
COJ	Gastroesophageal junction
GORD	Gastroesophageal reflux disease
HH	Hiatus hernia
LOS	Lower oesophageal sphincter
PEH	Paraesophageal hiatus hernia (hiatus hernia type 2–4)

**Figure S1** Flowsheet: endoscopy (index test) and intraoperative presence of HH (reference standard test). PEH, paraesophageal hiatus hernia; BM, barium meal contrast study; CT, computerised tomography; HH, hiatus hernia.

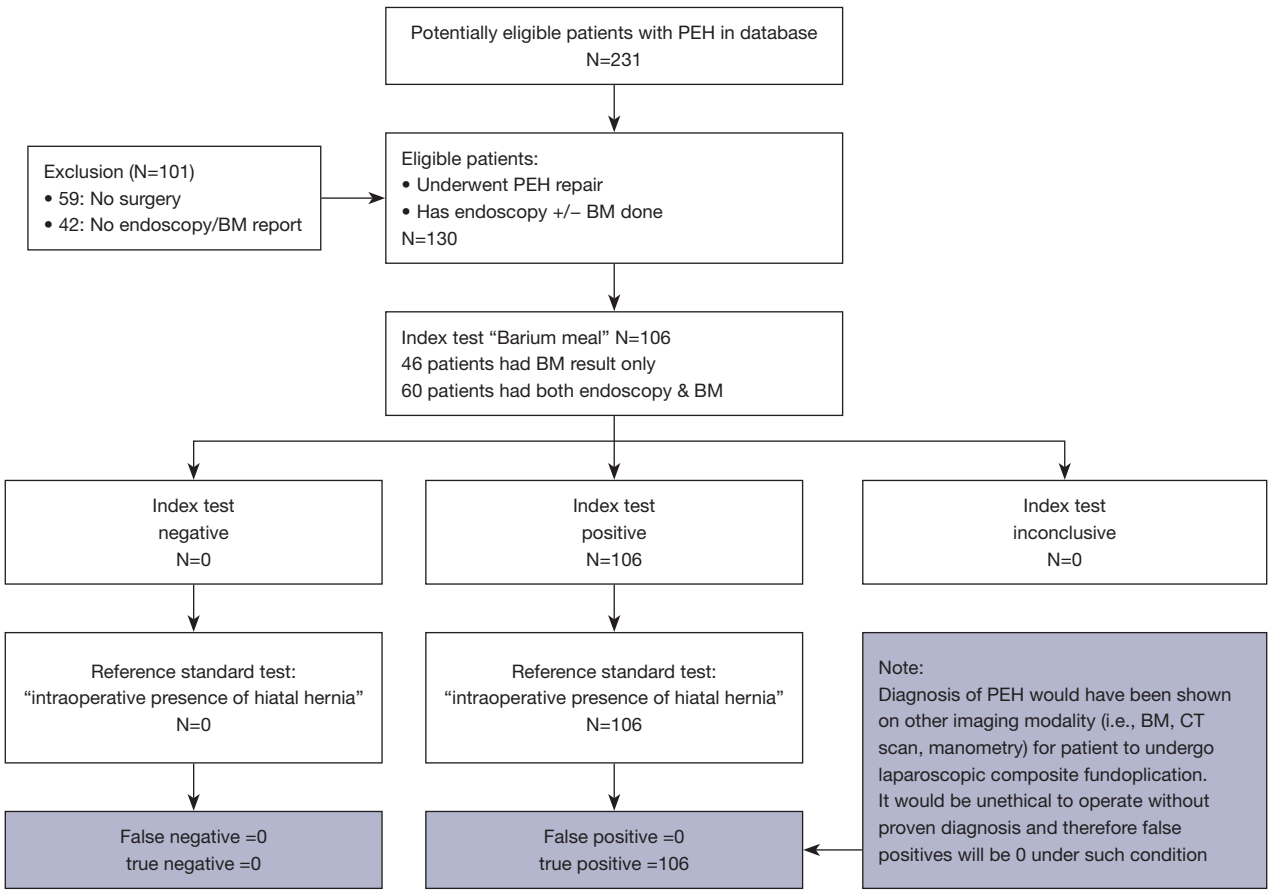


Figure S2 Flowsheet: barium meal (index test) and intraoperative presence of HH (reference standard test). PEH, paraoesophageal hiatus hernia; BM, barium meal contrast study; CT, computerised tomography; HH, hiatus hernia.

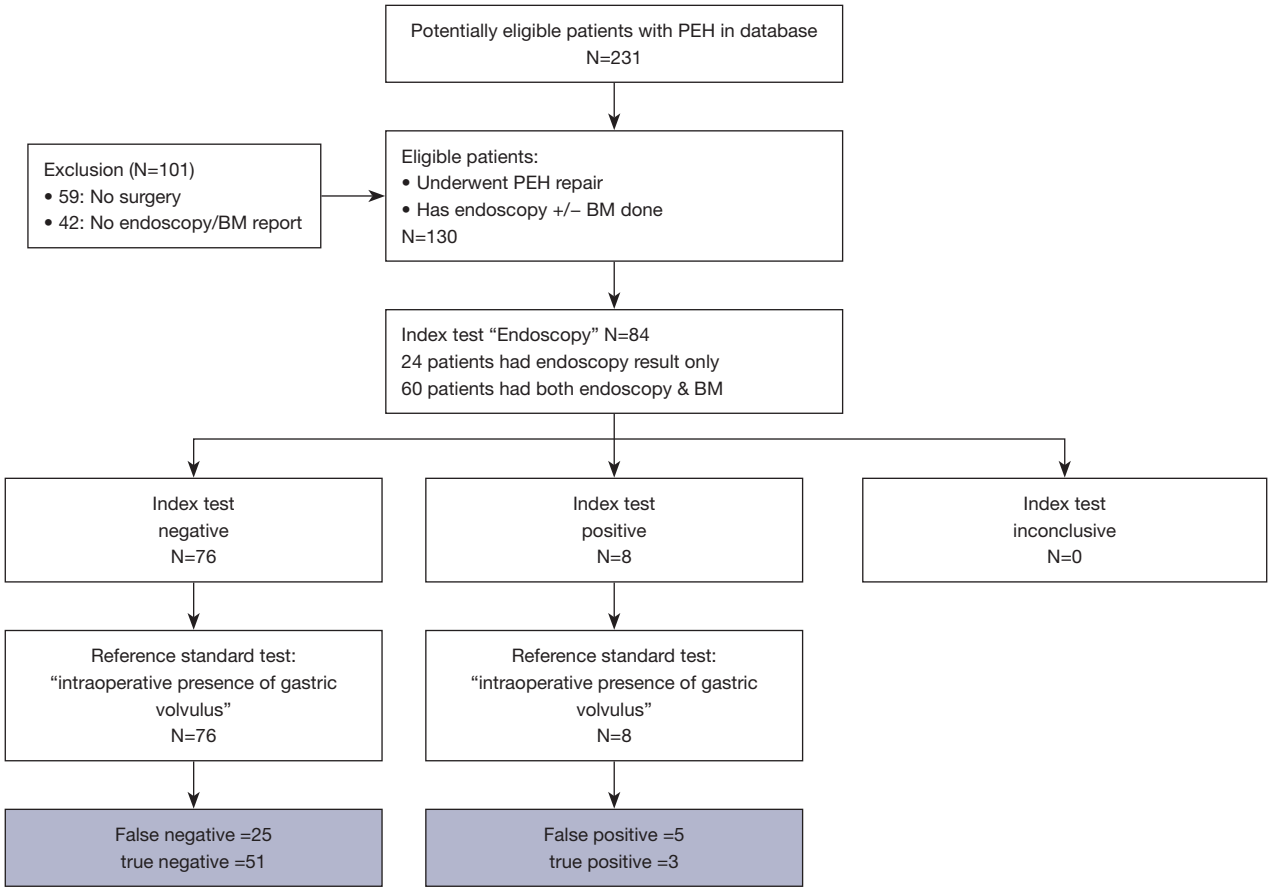


Figure S3 Flowsheet: endoscopy (index test) and intraoperative presence of GV (reference standard test). PEH, paraoesophageal hiatus hernia; BM, barium meal contrast study; GV, gastric volvulus.

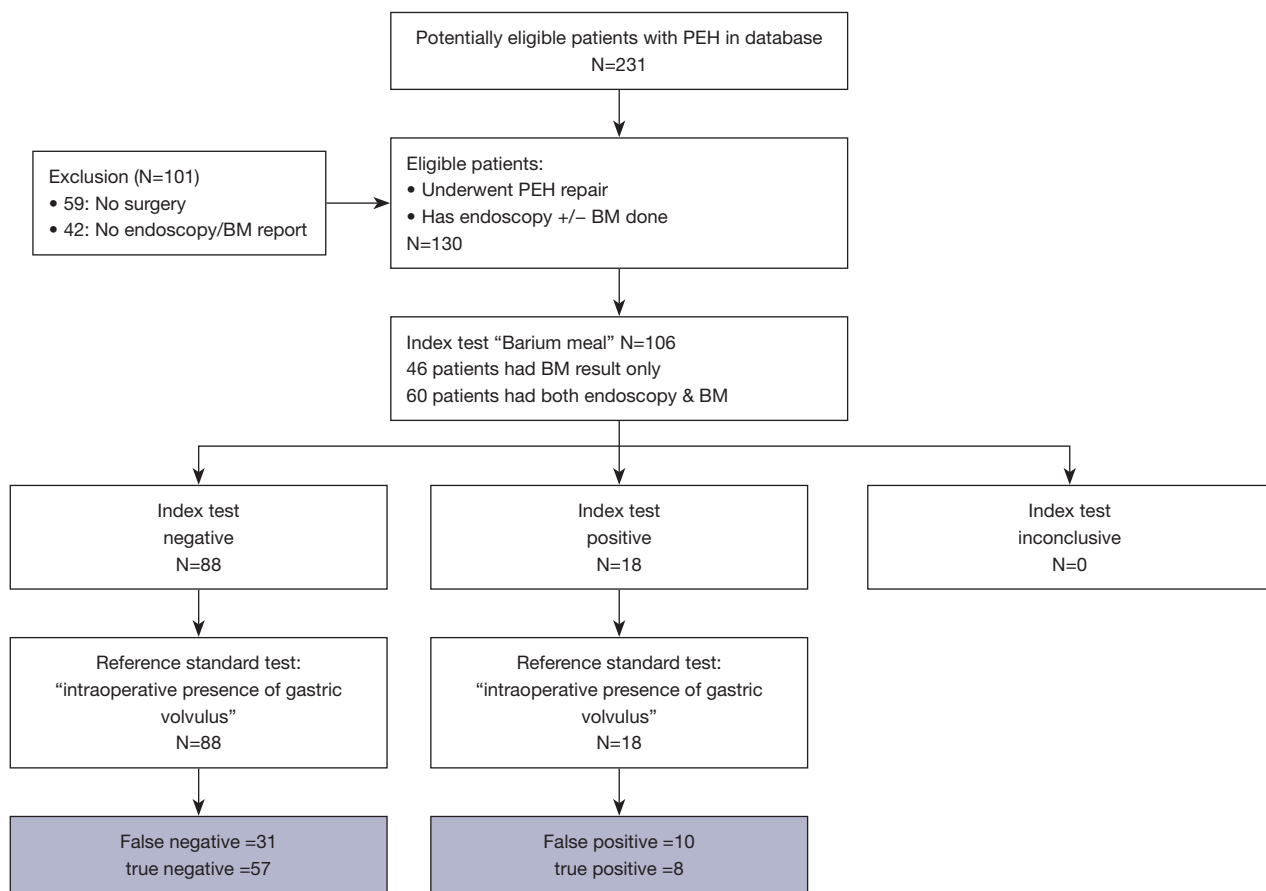


Figure S4 Flowsheet: barium meal (index test) and intraoperative presence of GV (reference standard test). PEH, paraesophageal hiatus hernia; BM, barium meal contrast study; GV, gastric volvulus.