

Figure S1 Forest plots of the number of dissected LNs showing significant differences between LG and OG. (A) Number of dissected LNs in proximal gastrectomy; (B) number of metastatic LNs dissected. LG, laparoscopic gastrectomy; OG, open gastrectomy; SD, standard deviation; IV, inverse variance; CI, confidence interval; LN, lymph node.

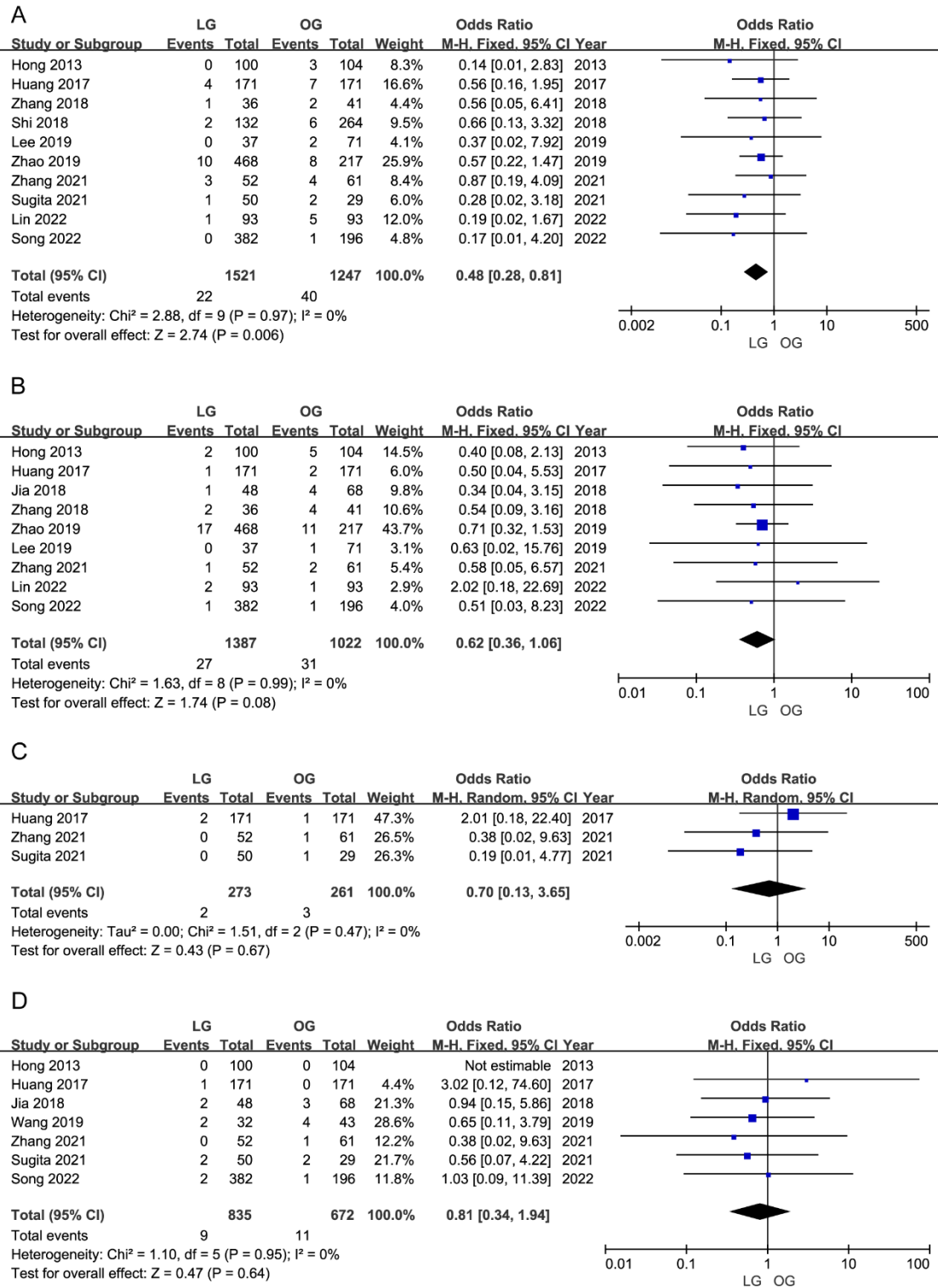


Figure S2 Forest plots of perioperative outcomes showing significant differences between LG and OG. (A) Postoperative pneumonia; (B) wound infection; (C) anastomotic site bleeding; (D) anastomotic stricture. LG, laparoscopic gastrectomy; OG, open gastrectomy; M-H, Mantel-Haenszel; CI, confidence interval.

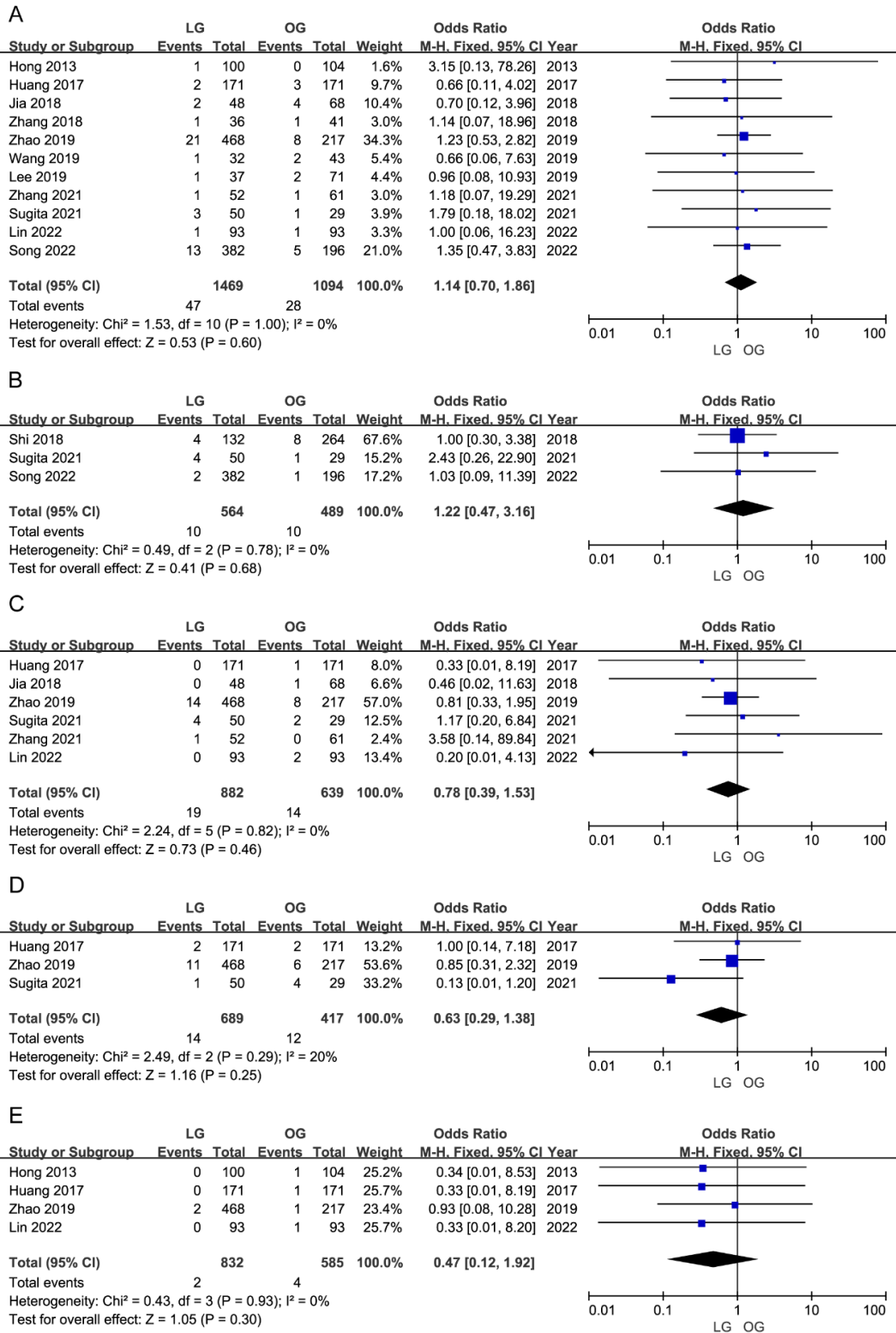


Figure S3 Forest plots of perioperative outcomes showing significant differences between LG and OG. (A) Anastomotic leakage; (B) abdominal abscess; (C) intestinal obstruction; (D) pancreatic fistula; (E) mortality at 30 days. LG, laparoscopic gastrectomy; OG, open gastrectomy; M-H, Mantel-Haenszel; CI, confidence interval.