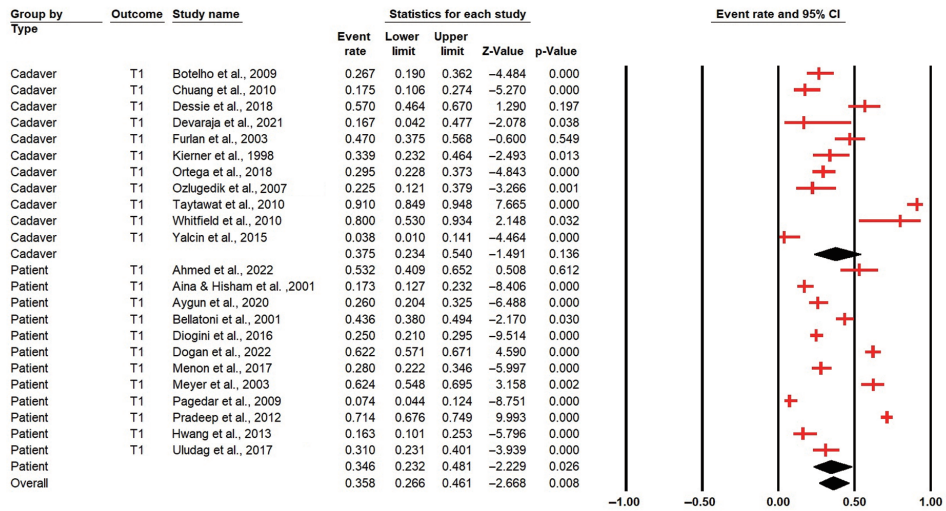


Table S1 The excluded 17 studies

No.	Study, year	Main reason	Citations
1	Liebermann-Meffert, 1999	Not external laryngeal nerve	Liebermann-Meffert DM, Walbrun B, Hiebert CA, Siewert JR. Recurrent and superior laryngeal nerves: a new look with implications for the esophageal surgeon. <i>The Annals of Thoracic Surgery</i> . 1999;67(1):217-23
2	Cernea, 1992	Wrong design	Cernea CR, Ferraz AR, Furlani J, Monteiro S, Nishio S, Hojaij FC, Dutra Jr A, Marques LA, Pontes PA, Bevilacqua RG. Identification of the external branch of the superior laryngeal nerve during thyroidectomy. <i>The American Journal of Surgery</i> . 1992;164(6):634-9
3	Estrela, 2011	Not Cernea classification	Estrela F, Záquia Leão H, Pereira Jotz G. Anatomic relation between the external branch of the superior laryngeal nerve and the thyroid gland. <i>Brazilian Journal of Otorhinolaryngology</i> . 2011;77:249-58
4	Lifante, 2009	Not external laryngeal nerve	Lifante JC, McGill J, Murry T, Aviv JE, Inabnet III WB. A prospective, randomized trial of nerve monitoring of the external branch of the superior laryngeal nerve during thyroidectomy under local/regional anesthesia and IV sedation. <i>Surgery</i> . 2009;146(6):1167-73
5	Arslan, 2018	Wrong design	Arslan K, Erenoglu B, Dogru O, Ovet G, Turan E, Atay A, Koksai H. Is the superior laryngeal nerve really safe when using harmonic focus in total thyroidectomy? A prospective randomized study. <i>Asian Journal of Surgery</i> . 2018;41(3):222-8
6	Stopar-Pintaric, 2015	Not external laryngeal nerve	Stopar-Pintaric T, Vlassakov K, Azman J, Cvetko E. The thyrohyoid membrane as a target for ultrasonography-guided block of the internal branch of the superior laryngeal nerve. <i>Journal of Clinical Anesthesia</i> . 2015;27(7):548-52
7	Dackiw, 2002	Not Cernea classification	Dackiw AP, Rotstein LE, Clark OH. Computer-assisted evoked electromyography with stimulating surgical instruments for recurrent/external laryngeal nerve identification and preservation in thyroid and parathyroid operation. <i>Surgery</i> . 2002;132(6):1100-8
8	Zhou, 2020	Not Cernea classification	Zhou B, Zhai Y, Hei H, Zhang S, Li C, Wang C, Gong W, Zhang R, Zheng C, Qin J. The strap intermuscular approach can significantly increase the exposure rate of the external branch of the superior laryngeal nerve during thyroid surgery. <i>Surgical Oncology</i> . 2020;35:56-61
9	Jonas, 2000	Not Cernea classification	Jonas J, Bähr R. Neuromonitoring of the external branch of the superior laryngeal nerve during thyroid surgery. <i>The American Journal of Surgery</i> . 2000;179(3):234-6
10	Yalcin, 2013	Not Cernea classification	Yalcin B, Develi S, Tubbs RS, Poyrazoglu Y. A detailed study of the relationship between the external laryngeal nerve and superior thyroid artery, including its glandular branches. <i>Clinical Anatomy</i> . 2013;26(7):814-22
11	Sreedharan, 2018	Not Cernea classification	Sreedharan R, Krishna L, Shetty A. Origin of superior thyroid artery: under the surgeon's knife. <i>Jornal Vascular Brasileiro</i> . 2018;17:290-5
12	Poyraz, 2001	Not Cernea classification	Poyraz M, Calguner E. Bilateral investigation of the anatomical relationships of the external branch of the superior laryngeal nerve and superior thyroid artery, and also the recurrent laryngeal nerve and inferior thyroid artery. <i>Okajimas Folia Anatomica Japonica</i> . 2001;78(2-3):65-74
13	Melamed, 2002	Not Cernea classification	Melamed H, Harris MB, Awasthi D. Anatomic considerations of superior laryngeal nerve during anterior cervical spine procedures. <i>Spine</i> . 2002;27(4):E83-6
14	Lu, 2015	Not Cernea classification	Lu WT, Sun SQ, Huang J, Zhong Y, Xu J, Gan SW, Guo L, Mo TT. An applied anatomical study on the external laryngeal nerve loop and the superior thyroid artery in the neck surgical region. <i>Anatomical Science International</i> . 2015;90:209-15
15	Friedman, 2009	Not Cernea classification	Friedman M, Wilson MN, Ibrahim H. Superior laryngeal nerve identification and preservation in thyroidectomy. <i>Operative Techniques in Otolaryngology-Head and Neck Surgery</i> . 2009;20(2):145-51
16	Haller, 2011	Not Cernea classification	Haller JM, Iwanik M, Shen FH. Clinically relevant anatomy of high anterior cervical approach. <i>Spine</i> . 2011;36(25):2116-21
17	Dedivitis, 2005	Not Cernea classification	Dedivitis RA, Guimarães AV. Identification of the external branch of the superior laryngeal nerve during minimally invasive video-assisted thyroidectomy. <i>Revista Brasileira de Otorrinolaringologia</i> . 2005;71:326-8

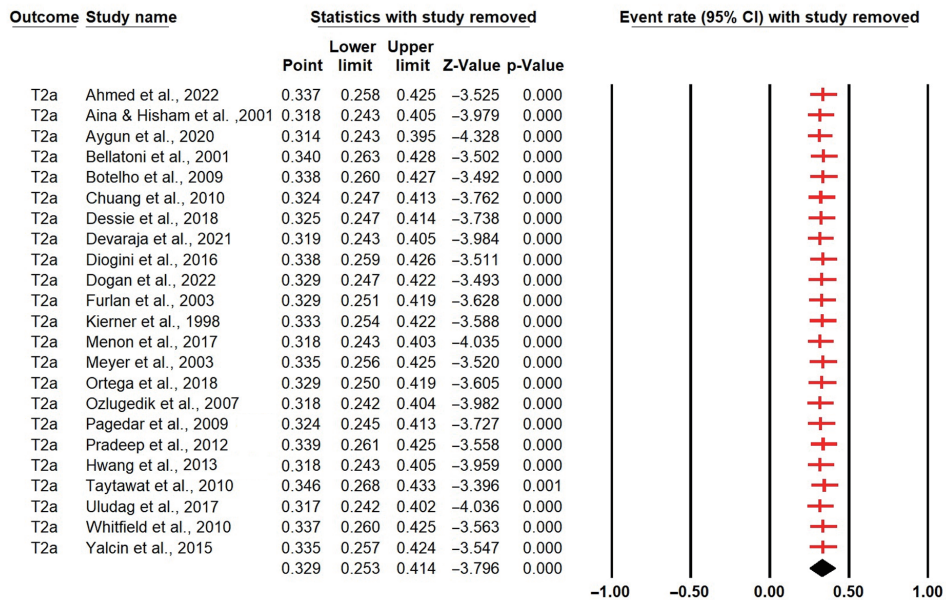
Cerneia Type T1



Meta Analysis

Figure S1 Forest T1 moderator. CI, confidence interval.

Cerneia Type T2a



Meta Analysis

Figure S2 Sensitivity T2a. CI, confidence interval.