

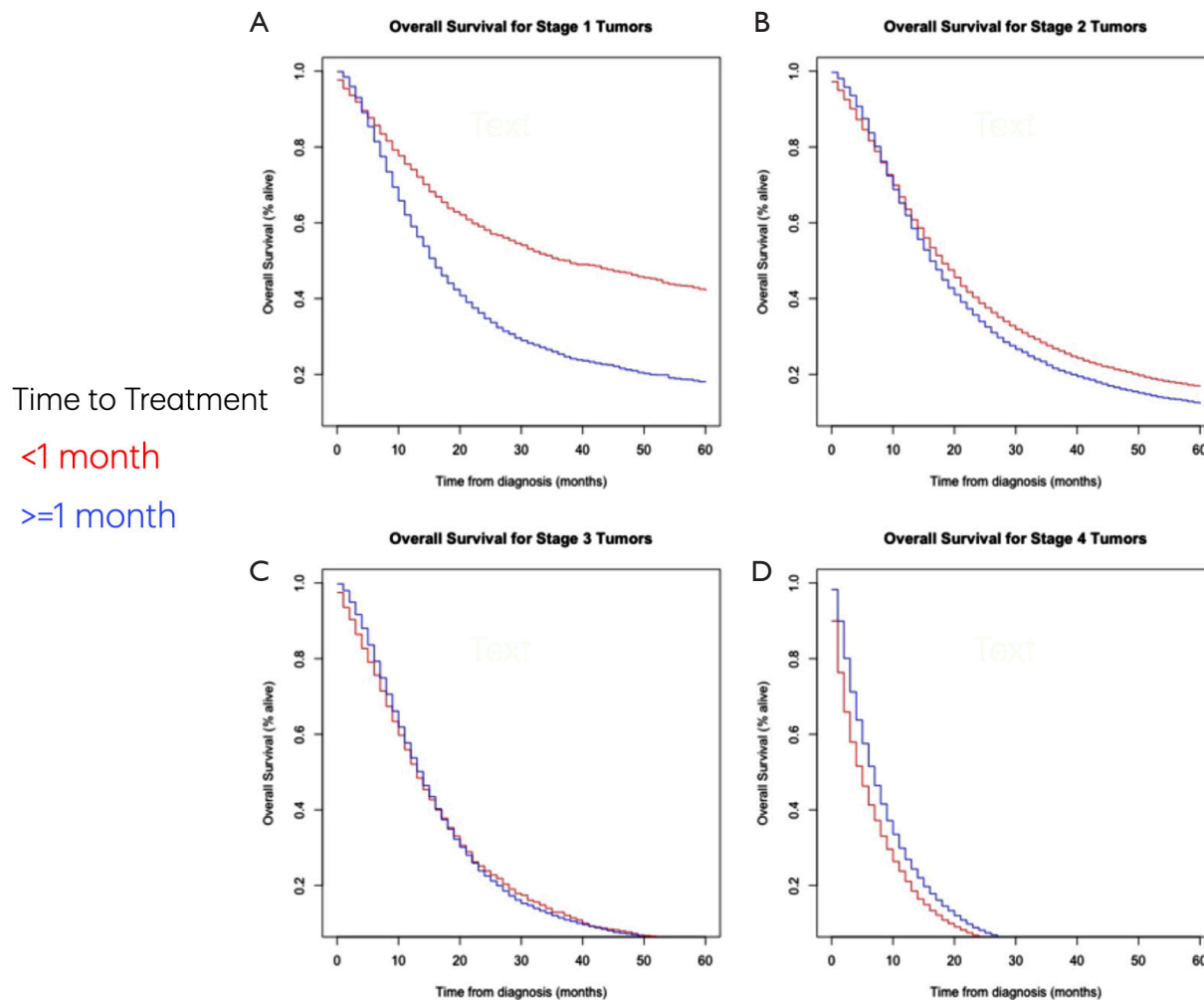
Figure S1 Time to treatment by treatment modality.

Table S1 Demographics, tumor characteristics, and treatment by selected times to treatment

Variable	Overall (n=64,382)	<2 months (n=50,272)	≥2 months (n=14,110)	P	<3 months (n=60,358)	≥3 months (n=4,024)	P
Age (years), mean (SD)	66.99 (10.79)	66.71 (10.73)	67.96 (10.93)	<0.001	66.93 (10.75)	67.82 (11.29)	<0.001
Male, n (%)	33,686 (52.3)	26,349 (52.4)	7,337 (52.0)	0.389	31,578 (52.3)	2,108 (52.4)	0.95
Race/ethnicity, n (%)				<0.001			<0.001
Hispanic White	7,370 (11.4)	5,423 (10.8)	1,947 (13.8)		6,750 (11.2)	620 (15.4)	
Non-Hispanic White	44,488 (69.1)	227 (0.5)	102 (0.7)		299 (0.5)	30 (0.7)	
Black	6,980 (10.8)	4,011 (8.0)	1,116 (7.9)		4,789 (7.9)	338 (8.4)	
Asian or Pacific Islander	5,127 (8.0)	5,043 (10.0)	1,937 (13.7)		6,353 (10.5)	627 (15.6)	
American Indian/Alaska Native	329 (0.5)	74 (0.1)	14 (0.1)		81 (0.1)	7 (0.2)	
Unknown race	88 (0.1)	35,494 (70.6)	8,994 (63.7)		42,086 (69.7)	2,402 (59.7)	
Median household income, n (%)				<0.001			<0.001
<35 k	585 (0.9)	445 (0.9)	140 (1.0)		545 (0.9)	40 (1.0)	
35–<55 k	9,121 (14.2)	7,063 (14.0)	2,058 (14.6)		8,520 (14.1)	601 (14.9)	
55–75 k	25,856 (40.2)	19,955 (39.7)	5,901 (41.8)		24,089 (39.9)	1,767 (43.9)	
>75 k	28,820 (44.8)	22,809 (45.4)	6,011 (42.6)		27,204 (45.1)	1,616 (40.2)	
Diagnosis year, n (%)				<0.001			0.02
2010–2013	19,958 (31.0)	15,981 (31.8)	3,977 (28.2)		18,745 (31.1)	1,213 (30.1)	
2014–2017	23,867 (37.1)	18,636 (37.1)	5,231 (37.1)		22,421 (37.1)	1,446 (35.9)	
2018–2020	20,557 (31.9)	15,655 (31.1)	4,902 (34.7)		19,192 (31.8)	1,365 (33.9)	
Clinical stage, n (%)				<0.001			<0.001
Stage I	6,881 (10.7)	4,933 (9.8)	1,948 (13.8)		6,220 (10.3)	661 (16.4)	
Stage II	18,244 (28.3)	14,582 (29.0)	3,662 (26.0)		17,224 (28.5)	1,020 (25.3)	
Stage III	8,275 (12.9)	6,228 (12.4)	2,047 (14.5)		7,707 (12.8)	568 (14.1)	
Stage IV	28,132 (43.7)	22,456 (44.7)	5,676 (40.2)		26,629 (44.1)	1,503 (37.4)	
Unknown	2,850 (4.4)	2,073 (4.1)	777 (5.5)		2,578 (4.3)	272 (6.8)	
Tumor size (mm), mean (SD)	48.08 (47.55)	48.18 (47.31)	47.69 (48.48)	0.426	48.12 (47.41)	47.31 (49.81)	0.45
Tumor grade, n (%)				0.001			<0.001
Well differentiated (grade 1)	2,432 (11.3)	1,943 (11.0)	489 (12.9)		2,263 (11.1)	169 (15.8)	
Moderately differentiated (grade 2)	10,625 (49.5)	8,742 (49.5)	1,883 (49.7)		10,115 (49.6)	510 (47.7)	
Poorly differentiated (grade 3)	8,388 (39.1)	6,970 (39.5)	1,418 (37.4)		7,998 (39.3)	390 (36.5)	
Initial surgical treatment, n (%)				<0.001			<0.001
No surgery	44,808 (69.6)	33,810 (67.3)	10,998 (77.9)		41,612 (68.9)	3,196 (79.4)	
Non-curative/local resection	141 (0.2)	124 (0.2)	17 (0.1)		133 (0.2)	8 (0.2)	
Pancreatoduodenectomy (Whipple)	13,856 (21.5)	11,697 (23.3)	2,159 (15.3)		13,322 (22.1)	534 (13.3)	
Distal pancreatectomy	2,994 (4.7)	2,504 (5.0)	490 (3.5)		2,832 (4.7)	162 (4.0)	
Total pancreatectomy	2,128 (3.3)	1,770 (3.5)	358 (2.5)		2,031 (3.4)	97 (2.4)	
Pancreatectomy, NOS	405 (0.6)	336 (0.7)	69 (0.5)		381 (0.6)	24 (0.6)	
Unknown	50 (0.1)	31 (0.1)	19 (0.1)		47 (0.1)	3 (0.1)	
Received radiation (%)	14,162 (22.0)	10,874 (21.6)	3,288 (23.3)	<0.001	13,185 (21.8)	977 (24.3)	<0.001
Received chemotherapy, n (%)	56,143 (87.2)	43,828 (87.2)	12,315 (87.3)	0.772	52,831 (87.5)	3,312 (82.3)	<0.001
Survival time (months), mean (SD)	14.82 (17.90)	14.96 (18.64)	14.32 (14.95)	<0.001	14.79 (18.07)	15.33 (15.05)	0.063

**Table S2** Survival outcomes by selected times to treatment

Variable	Overall (n=63,361)	<2 months (n=49,510)	≥2 months (n=13,851)	P	<3 months (n=59,422)	≥3 months (n=3,939)	P
Survival months, mean (SD)	14.84 (17.93)	14.98 (18.68)	14.32 (14.90)	<0.001	14.80 (18.10)	15.33 (14.99)	0.071
Status at follow up, n (%)				0.003			0.021
Alive	12,257 (19.3)	9,511 (19.2)	2,746 (19.8)		11,470 (19.3)	787 (20.0)	
Dead from cancer	48,076 (75.9)	37,696 (76.1)	10,380 (74.9)		45,144 (76.0)	2,932 (74.4)	
Dead from non-cancer	3,028 (4.8)	2,303 (4.7)	725 (5.2)		2,808 (4.7)	220 (5.6)	
OM (% dead), n (%)							
6-month	20,332 (32.1)	16,726 (33.8)	3,606 (26.0)	<0.001	19,548 (32.9)	784 (19.9)	<0.001
12-month	33,196 (52.4)	26,277 (53.1)	6,919 (50.0)	<0.001	31,341 (52.7)	1,855 (47.1)	<0.001
24-month	44,978 (71.0)	35,158 (71.0)	9,820 (70.9)	0.801	42,238 (71.1)	2,740 (69.6)	0.044
Overall	51,104 (80.7)	39,999 (80.8)	11,105 (80.2)	0.108	47,952 (80.7)	3,152 (80.0)	0.307
CSM (% dead), n (%)							
12-month	31,322 (49.4)	24,832 (50.2)	6,490 (46.9)	<0.001	29,587 (49.8)	1,735 (44.0)	<0.001
Overall	48,076 (75.9)	37,696 (76.1)	10,380 (74.9)	0.004	45,144 (76.0)	2,932 (74.4)	0.03
NCM (% dead), n (%)							
12-month	1,874 (3.0)	1,445 (2.9)	429 (3.1)	0.285	1,754 (3.0)	120 (3.0)	0.771
Overall	3,028 (4.8)	2,303 (4.7)	725 (5.2)	0.005	2,808 (4.7)	220 (5.6)	0.016



**Figure S2** Kaplan-Meier curves for overall survival by individual stage (A: stage 1, B: stage 2, C: stage 3, D: stage 4). Log-rank test: A,  $P < 0.001$ ; B,  $P < 0.001$ ; C,  $P = 0.6$ ; D,  $P < 0.001$ .