

Table S1 Bias risk assessment

Study	①	②	③	④	⑤	⑥	⑦	⑧	Score
Liu W	2	2	2	2	2	1	1	0	12
Chen C	2	2	2	2	2	0	0	0	10
Tian S	2	2	2	2	2	1	2	0	13
Li K	2	2	2	2	2	0	0	0	10
Xu YH	2	1	2	2	2	1	2	0	12
Yang W	2	2	2	2	2	1	2	0	13
Guan WJ	2	2	2	2	2	2	2	0	14
Wu J	2	2	2	2	2	1	2	0	13
Mo P	2	2	2	2	2	1	2	0	13
Zhou F	2	2	2	2	2	2	2	0	14
Liu K	2	2	2	2	2	1	2	0	13
Xu T	2	2	2	2	2	1	2	0	13
Wang Z	2	2	2	2	2	1	2	0	13
Xu XW	2	2	2	2	2	1	2	0	13
Ruan Q	2	1	2	2	2	0	0	0	9
Chen J	2	2	2	2	2	1	2	0	13
Lin D	2	2	2	2	2	0	0	0	10
Li Y	2	2	2	2	2	0	0	0	10
COVID-19 team Australia	2	2	2	2	2	0	0	0	10
Zhou S	2	2	2	2	2	0	0	0	10
Wang J	2	2	2	2	2	0	0	0	10
Qin C	2	2	2	2	2	0	0	0	10
Han R	2	2	2	2	2	0	0	0	10
Sun WW	2	1	2	2	2	0	0	0	9
Dong XC	2	1	2	2	2	0	0	0	9
Xiao F	2	2	2	2	2	0	0	0	10
Fan BE	2	2	2	2	2	0	0	0	10
Shi Y	2	1	2	2	2	1	2	0	12
Xu X	2	2	2	2	2	1	2	0	13
He XW	2	2	2	2	2	0	0	0	10
Wu J	2	1	2	2	2	0	0	0	9
Han H	2	2	2	2	2	0	0	0	10
Shi H	2	2	2	2	2	1	2	0	13
Zhao W	2	1	2	2	2	0	0	0	9

Table S1 (continued)

Table S1 (continued)

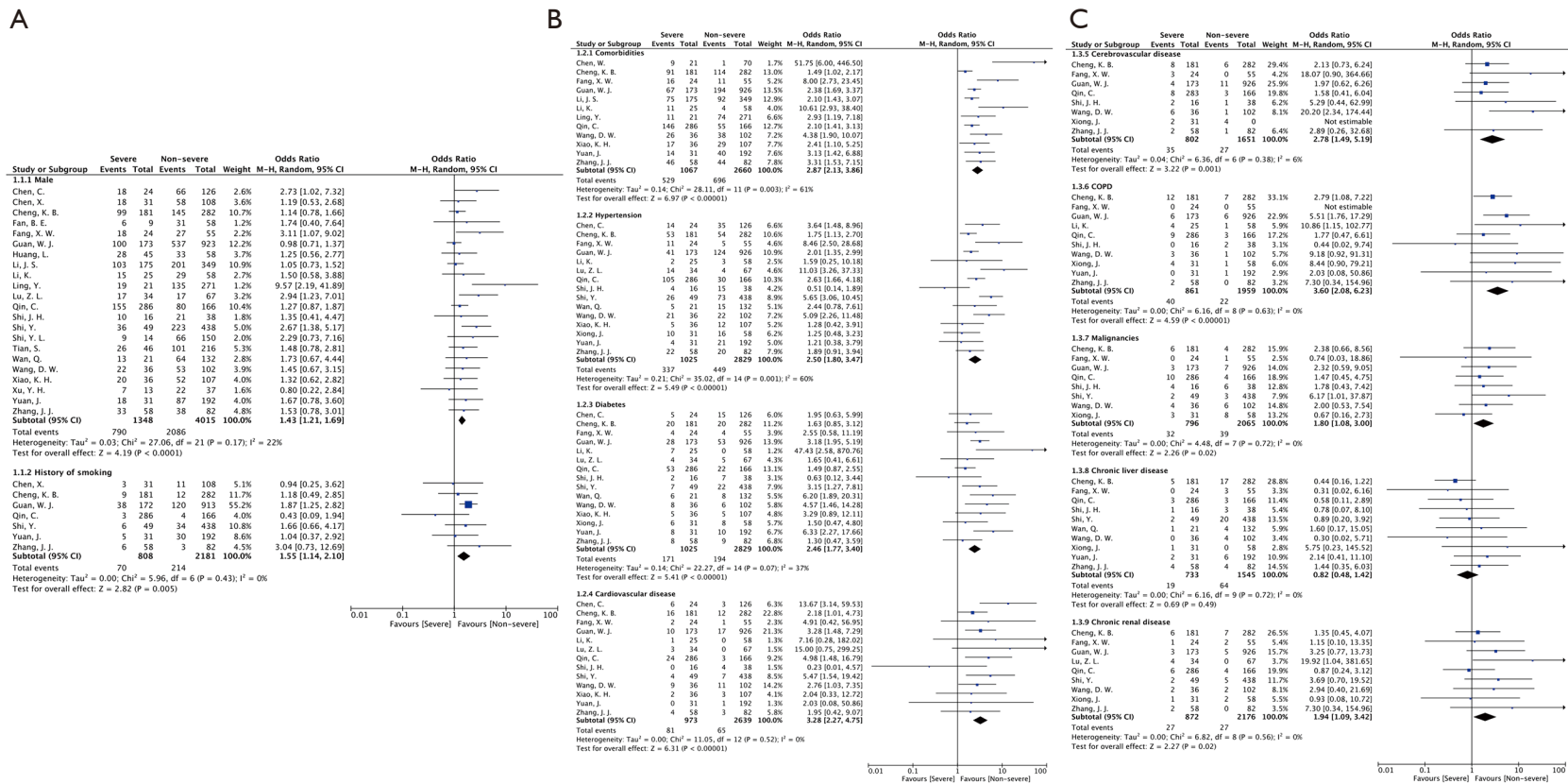
Study	①	②	③	④	⑤	⑥	⑦	⑧	Score
Wu C	2	2	2	2	2	1	2	0	13
Wang SH	2	2	2	2	2	0	0	0	10
Shi JH	2	2	2	2	2	1	2	0	13
Zhao Y	2	2	2	2	2	0	0	0	10
Ling Y	2	2	2	2	2	0	0	0	10
Cheng JL	2	2	2	2	2	0	0	0	10
Huang L	2	2	2	2	2	0	0	0	10
Lu XF	2	2	2	2	2	0	0	0	10
Liu HF	2	2	2	2	2	0	0	0	10
Yu CC	2	2	2	2	2	0	0	0	10
Li XH	2	2	2	2	2	1	1	0	12
Hu R	2	2	2	2	2	1	1	0	12
Lu ZB	2	2	2	2	2	1	2	0	13
Li Y	2	2	2	2	2	0	0	0	10
Shi YL	2	2	2	2	2	0	0	0	10
Li RQ	2	2	2	2	2	0	0	0	10
Bai P	2	2	2	2	2	1	2	0	13
Sun DW	2	2	2	2	2	0	0	0	10
Wan Q	2	2	2	2	2	1	2	0	13
Lu YF	2	1	2	2	2	0	0	0	9
Yu SM	2	2	2	2	2	0	0	0	10
Yang K	2	2	2	2	2	1	2	0	13
Xu S	2	2	2	2	2	1	2	0	13
Ma PQ	2	2	2	2	2	0	0	0	10
Zhao CC	2	2	2	2	2	0	0	0	10
Chen X	2	2	2	2	2	0	0	0	10
Fang L	2	2	2	2	2	0	0	0	10
Fang XW	2	2	2	2	2	1	2	0	13
Zhong Q	2	2	2	2	2	0	0	0	10
Ran J	2	2	2	2	2	0	0	0	10
Yuan J	2	2	2	2	2	1	2	0	13
Xiao KH	2	2	2	2	2	1	2	0	13
Wang AH	2	2	2	2	2	0	0	0	10
Wang XJ	2	2	2	2	2	0	0	0	10
Li JS	2	2	2	2	2	0	0	0	10

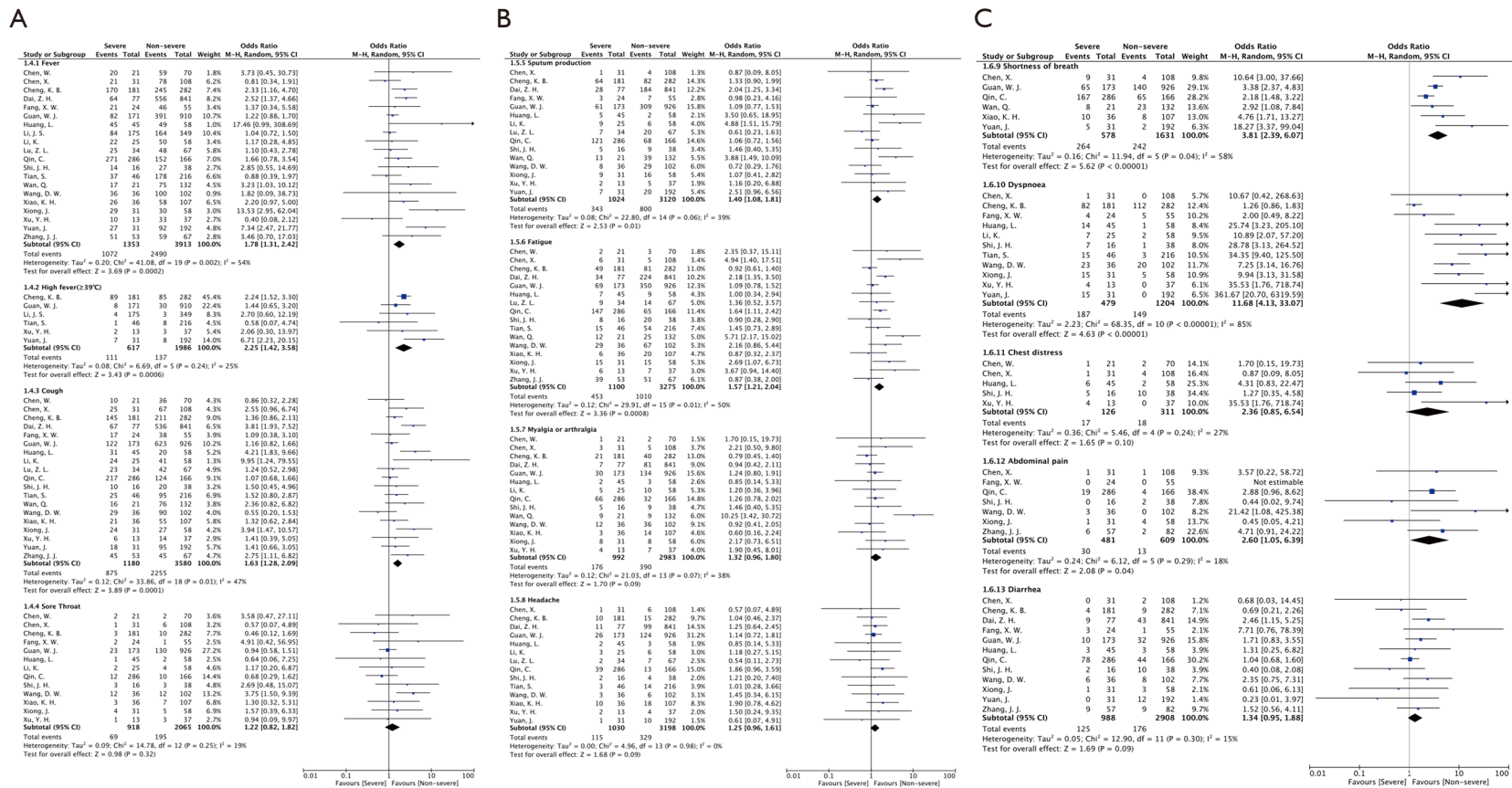
Table S1 (continued)

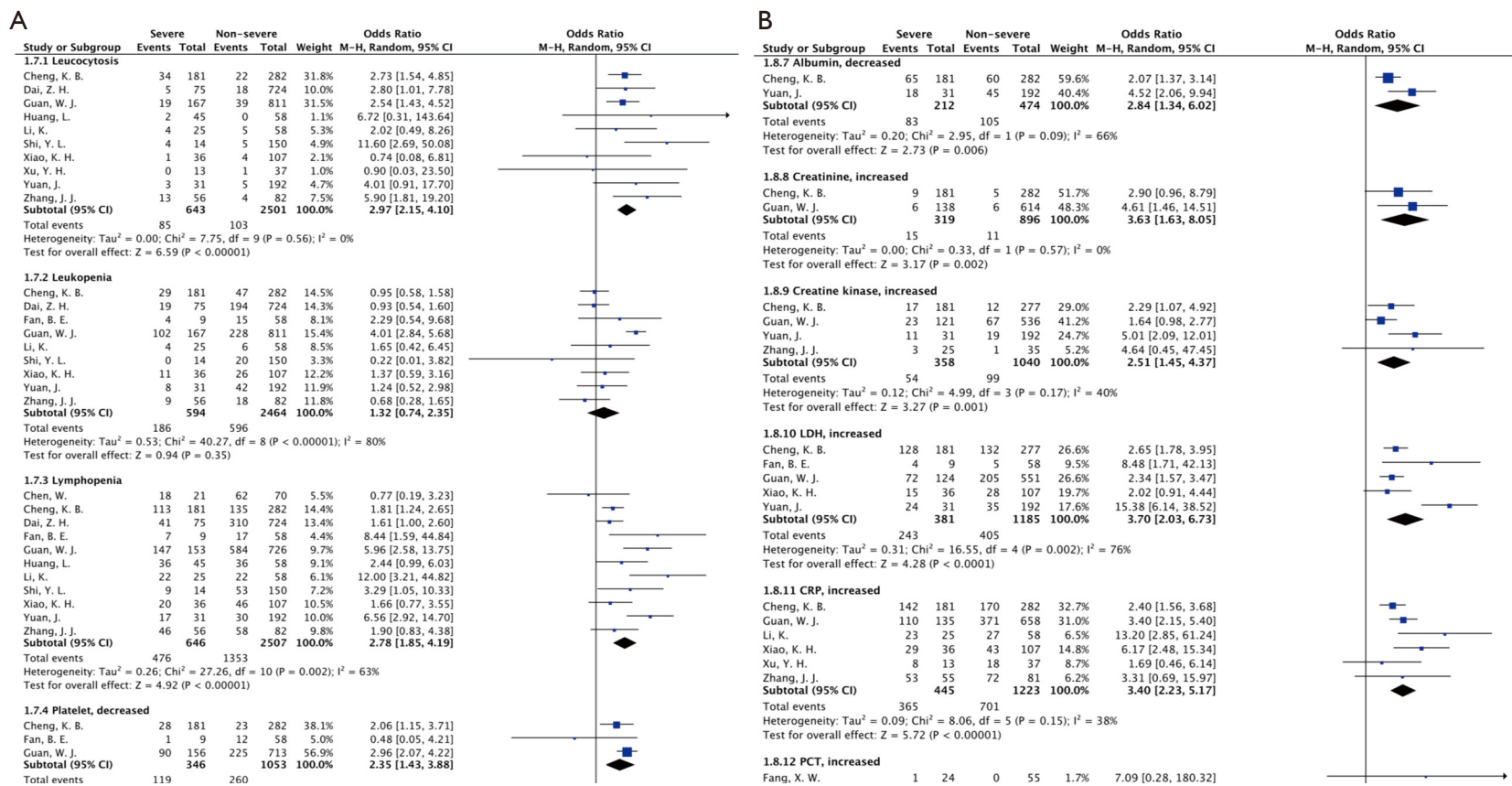
Table S1 (continued)

Study	①	②	③	④	⑤	⑥	⑦	⑧	Score
Han J	2	2	2	2	2	0	0	0	10
Dai ZH	2	2	2	2	2	0	0	0	10
Chen W	2	2	2	2	2	0	0	0	10
Cheng KB	2	2	2	2	2	1	2	0	13
COVID-19 team Shandong	2	2	2	2	2	0	0	0	10
Sui HY	2	2	2	2	2	0	0	0	10
Zhou YP	2	2	2	2	2	0	0	0	10
Ding Y	2	2	2	2	2	0	0	0	10
Xiong J	2	2	2	2	2	1	2	0	13
Hou KK	2	2	2	2	2	1	2	0	13
Chen ZY	2	2	2	2	2	0	0	0	10
Chang ZY	2	2	2	2	2	0	0	0	10
Qian ZC	2	2	2	2	2	1	2	0	13
Lu ZL	2	2	2	2	2	0	0	0	10
Chen NS	2	2	2	2	2	2	2	0	14
Liang W	2	2	2	2	2	1	2	0	13
Yang XB	2	2	2	2	2	2	2	0	14
Wang DW	2	2	2	2	2	2	2	0	14
Liu K	2	2	2	2	2	1	2	0	13
Pan YY	2	2	2	2	2	0	0	0	10
Zhang JJ	2	2	2	2	2	1	2	0	13

① A clearly stated aim; ② Inclusion of consecutive patients; ③ Prospective collection of data; ④ Endpoints appropriate to the aim of the study; ⑤ Unbiased assessment of the study endpoint; ⑥ Follow-up period appropriate to the aim of the study; ⑦ Loss to follow-up less than 5%; ⑧ Prospective calculation of the study size. The items are scored 0 (not reported), 1 (reported but inadequate), or 2 (reported and adequate). The global ideal score being 16 for non-comparative studies.







**Figure S3** Meta-analysis of laboratory abnormalities according to COVID-19 severity. ALT, alanine aminotransferase; AST, aspartate aminotransferase; LDH, lactic dehydrogenase; CRP, C-reactive protein; PCT, procalcitonin.

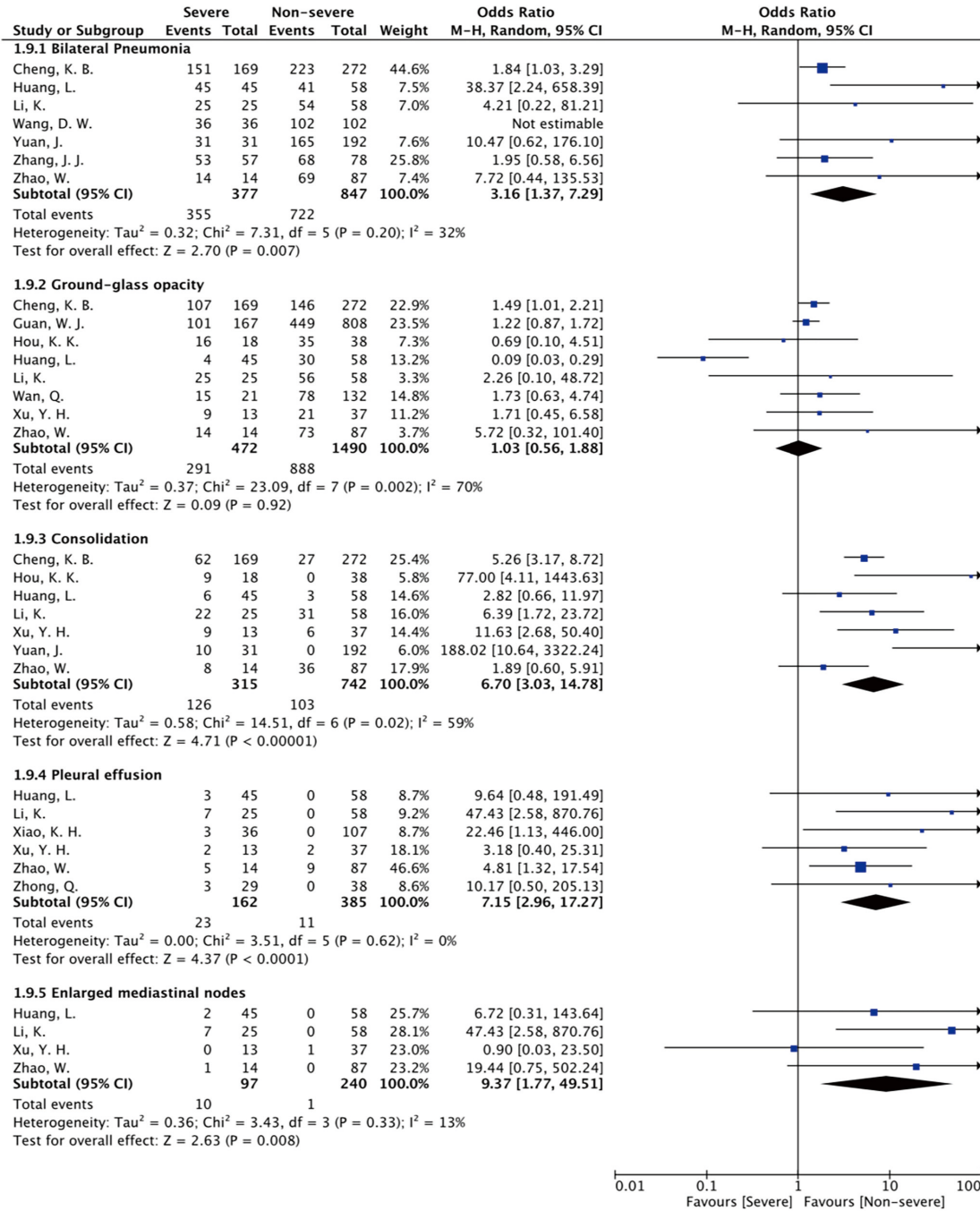


Figure S4 Meta-analysis of CT findings according to COVID-19 severity.