

Table S1 The age and gender distribution of healthy controls and SLE patients

Characteristic	Healthy control (n=44)	SLE patients (n=100)	P value
Age, years (mean \pm SEM)	33.636 \pm 7.409	33.680 \pm 12.900	0.983
Gender (male/female)	4/40	10/90	0.865

Continuous variables are presented as mean \pm SEM, P values were calculated by unpaired Student's test, as appropriate. The P value for the categorical variable was calculated by χ^2 test, or Fisher's exact test, as appropriate. SLE, systemic lupus erythematosus.

Table S2 Demographics and clinical characteristics in SLE patients

Characteristic	Inactive SLE (n=50)	Active SLE (n=50)	P value
Age, years	33.280 \pm 12.265	34.080 \pm 13.618	0.758
Gender (male/female)	4/46	6/44	0.505
Disease duration, years	2.2 \pm 3.4	2.4 \pm 3.2	0.832
Lupus nephritis (n=48)	12/50 (24%)	36/50 (72%)	<0.001***
Laboratory findings			
24-hour urinary protein, g	0.252 \pm 0.138	1.771 \pm 2.152	<0.001***
Scr, μ mol/L	50.240 \pm 17.354	76.080 \pm 49.168	0.001***
CRP, mg/L	1.112 \pm 1.021	18.406 \pm 26.868	<0.001***
ESR, mm/h	9.320 \pm 7.322	16.760 \pm 12.227	<0.001***
dsDNA, IU/mL	92.942 \pm 94.086	163.934 \pm 102.240	0.030 [†]
C3, g/L	0.831 \pm 0.131	0.727 \pm 0.254	0.046 [†]
C4, g/L	0.158 \pm 0.079	0.146 \pm 0.061	0.486

Categorical variables are presented as n (%), P values were calculated by χ^2 test, or Fisher's exact test, as appropriate. Continuous variables are presented as mean \pm SEM, P values were calculated by unpaired Student's test, as appropriate (*, P<0.05; ***, P<0.001). SLE, systemic lupus erythematosus; Scr, serum creatinine; CRP, C-reactive protein; ESR, erythrocyte sedimentation rate; dsDNA, double-stranded DNA; C3, complement 3; C4, complement 4.

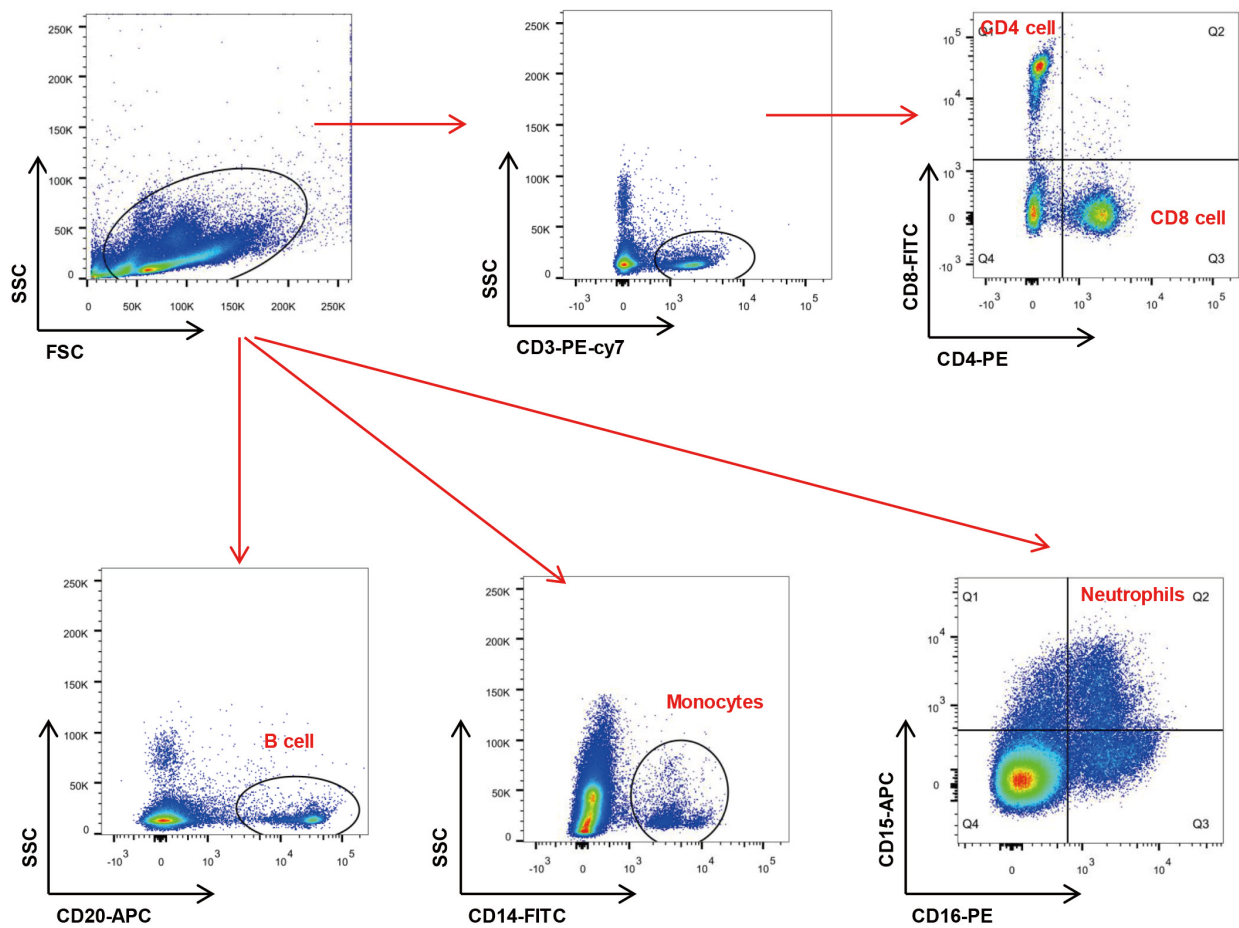


Figure S1 Gating strategies for sorted cells. Gating strategies for CD4 T cells (CD3⁺ CD4⁺), CD8 T cells (CD3⁺ CD8⁺), B cells (CD20⁺), monocytes (CD14^{hi}) and neutrophils (CD15⁺CD16⁺) are shown.