

Search strategies

Systematic search for systematic reviews

Database	Medline (via Ovid)
Date	September 03, 2018
Hits	134
Search strategy	<ol style="list-style-type: none"> exp Attitude to Death/or exp Right to Die/or exp Suicide, Assisted/or exp Euthanasia/or exp Euthanasia, Active/ ("hasten* death" or "hasten* dying" or ((desire or wish) adj2 (die or death or dying))).mp. 1 or 2 exp Suicide, Attempted/or exp Suicidal Ideation/or exp Suicide/ suicid*.mp. 4 or 5 exp Terminal Care/ exp Hospices/ exp Palliative Care/ exp Terminally Ill/ (palliati* or hospice\$ or "terminal care" or "terminally ill" or dying or "end of life" or "end-of-life").mp. or/7-11 exp neoplasms/ (cancer* or malignan* or carcino* or neoplasm* or tumor* or tumour* or oncolog*).mp. 13 or 14 6 and 12 and 15 3 or 16 Meta-Analysis as Topic/ meta analy\$.tw. metaanaly\$.tw. Meta-Analysis/ (systematic adj (review\$1 or overview\$1)).tw. exp Review Literature as Topic/ or/18-23 cochrane.ab. embase.ab. (psychlit or psychlit).ab. (psychinfo or psychinfo).ab. (cinahl or cinhal).ab. science citation index.ab. bids.ab. cancerlit.ab. or/25-32 reference list\$.ab. bibliograph\$.ab. hand-search\$.ab. relevant journals.ab. manual search\$.ab. or/34-38 selection criteria.ab. data extraction.ab. 40 or 41 Review/ 44 and 43 24 or 33 or 39 or 44 exp animals/not humans.sh. 45 not 46 exp child/not adult.sh. 49, 47 not 48 50. (erratum or editorial).pt. 49 not 50 17 and 51 exp animals/not humans.sh. 52 not 53 exp child/not adult.sh. 54 not 55 57. (erratum or editorial).pt. 56 not 57 59. Limit 58 to yr="2008-current"
Handsearch	Blades <i>et al.</i> 2018, DeCou <i>et al.</i> 201
Sentinel papers	Bellido-Perez <i>et al.</i> 2017, Rodriguez-Prat <i>et al.</i> 2017

Systematic search for primary studies: dealing with patients' desire to die

Database	Medline (via Ovid)	PsycINFO (via Ovid)	Cochrane Library
Date	October 08, 2018	October 08, 2018	October 08, 2018
Hits	568	69	129
Search strategy	<ol style="list-style-type: none"> exp Attitude to Death/or exp Right to Die/ or exp Suicide, Assisted/or exp Euthanasia/ or exp Euthanasia, Active/ ("hasten* death" or "hasten* dying" or ((desire or wish) adj2 (die or death or dying))).mp. 1 or 2 exp Suicide, Attempted/or exp Suicidal Ideation/or exp Suicide/ suicid*. mp. 4 or 5 exp Terminal Care/ exp Hospices/ exp Palliative Care/ 10. exp Terminally Ill/ (palliati* or hospice\$ or "terminal care" or "terminally ill" or dying or "end of life" or "end-of-life").mp. or/7-11 exp neoplasms/ 14. (cancer* or malignan* or carcino* or neoplasm* or tumor* or tumour* or oncolog*).mp. 13 or 14 6 and 12 and 15 17. 3 or 16 Randomized Controlled Trials as Topic/ Randomized controlled trial/ Random Allocation/21. Double Blind Method/ Single Blind Method/ clinical trial/ clinical trial, phase i.pt. clinical trial, phase ii.pt. clinical trial, phase iii.pt. clinical trial, phase iv.pt. controlled clinical trial.pt. randomized controlled trial.pt. multicenter study.pt. clinical trial.pt. exp Clinical Trials as topic/ (clinical adj trial\$).tw. ((singl\$ or doubl\$ or treb\$ or tripl\$) adj (blind\$ or mask\$3)).tw. placebos/ placebo\$.tw. randomly allocated.tw. (allocated adj2 random\$).tw. or/18-38 case report.tw. historical article/42. or/40-41 39 not 42 17 and 43 	<ol style="list-style-type: none"> exp "DEATH AND DYING"/or exp DEATH ATTITUDES/ ("hasten* death" or "hasten* dying" or ((desire or wish) adj2 (die or death or dying))).mp. 1 or 2 exp ATTEMPTED SUICIDE/or exp ASSISTED SUICIDE/or exp SUICIDE PREVENTION/or exp SUICIDE/ suicid*.mp. 4 or 5 exp Terminally Ill Patients/or exp PALLIATIVE CARE/or exp "Death and Dying"/or exp Hospice/ ("hasten* death" or "hasten* dying" or ((desire or wish) adj2 (die or death or dying))).mp. 7 or 8 exp Neoplasms/ 11. (cancer* or malignan* or carcino* or neoplasm* or tumor* or tumour* or oncolog*). mp. 10 or 11 6 and 9 and 12 3 or 13 limit 14 to "0300 clinical trial" 	<ol style="list-style-type: none"> MeSH descriptor: [Attitude to Death] explode all trees MeSH descriptor: [Right to Die] explode all trees MeSH descriptor: [Euthanasia] explode all trees ("hasten* death" or "hasten* dying" or ((desire or wish) near/2 (die or death or dying)):ti.ab,kw #1 or #2 #3 or #4 MeSH descriptor: [Suicide] explode all trees suicid*:ti.ab,kw #6 or #7 MeSH descriptor: [Terminal Care] explode all trees MeSH descriptor: [Palliative Care] explode all trees MeSH descriptor: [Hospices] explode all trees MeSH descriptor: [Terminally Ill] explode all trees (palliati* or hospice* or "terminal care" or "terminally ill" or dying or "end of life" or "end-of-life"):ti.ab,kw #9 or #10 or #11 or #12 or #13 MeSH descriptor: [Neoplasms] explode all trees (cancer* or malignan* or carcino* or neoplasm* or tumor* or tumour* or oncolog*):ti.ab,kw #15 or #16 #8 and #14 and #17 In: Trials
Handsearch	Breitbart <i>et al.</i> 2018		
Sentinel papers	Breitbart <i>et al.</i> 2015		

Inclusion and exclusion criteria for systematic searches

Systematic search for systematic reviews

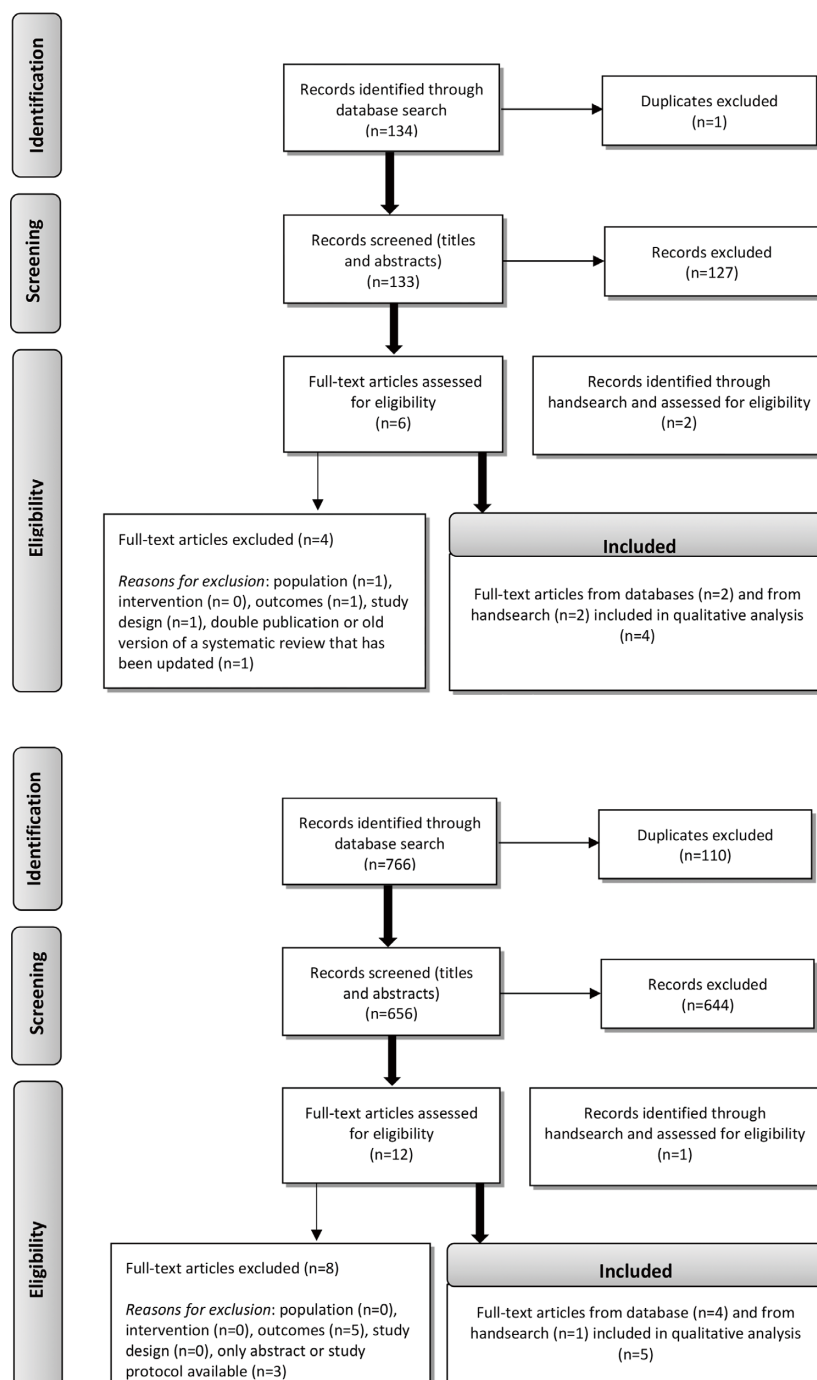
Inclusion criteria	<ol style="list-style-type: none"> Population: adult patients with a desire to die or suicidality and an incurable cancer Intervention: <ul style="list-style-type: none"> Assessment of desire to die Dealing with desire to die Qualitative description of desire to die Outcome: <ul style="list-style-type: none"> For assessment: validity/reliability, sensitivity/specificity of assessment instruments For dealin with desire to die: Increase, decrease or other change in suicidality/desire to die Qualitative description of desire to die Study type: systematic review
Exclusion criteria	<ol style="list-style-type: none"> Only abstract available Double publication or old version of an updated systematic review

Systematic search for primary studies: dealing with patients' desire to die

Inclusion criteria	1. Population: adult patients with potential suicidality or a potential desire to die
	2. Intervention: any type of pharmaceutical or non-pharmaceutical procedure teste das an RCT
	3. Outcome: decrease of desire to die/suicidality related burden
	4. Study type: RCTs, CCTs
Exclusion criteria	Only abstract or study protocol available

PRISMA charts

PRISMA flow diagram for the inclusion of systematic reviews



PRISMA Flow diagram for the inclusion of primary studies: dealing with patients' desire to die