

Figure S1 Kaplan-Meier survival curves of overall graft and patient in study period. Graft failure was defined as death or retransplantation. (A) Graft survival rate at 12-month follow-up; (B) overall patient survival rate at 12-month follow-up.

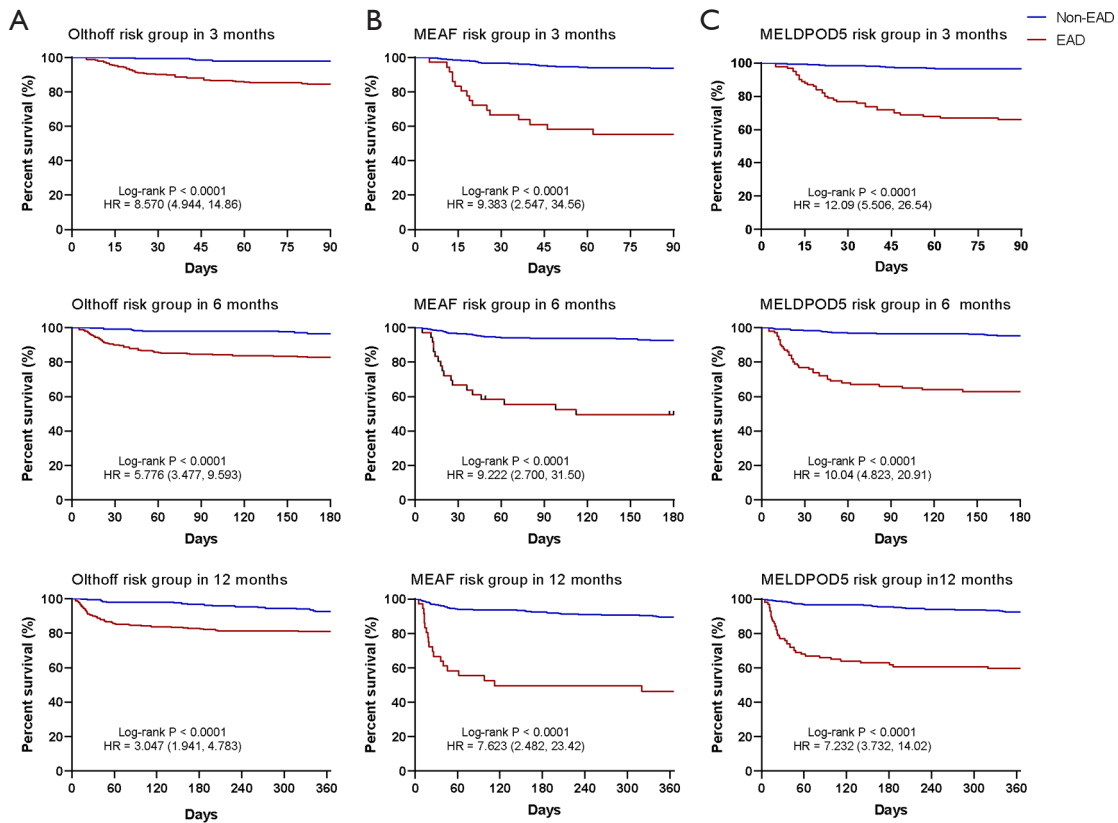


Figure S2 Comparison of Kaplan-Meier patient survival curves between three EAD definitions at 3-month, 6-month, and 12-month follow-up. (A) Olthoff risk group; (B) MEAF risk group was defined as MEAF >8; (C) MELDPOD5 risk group was defined as MELDPOD5 >18.9. MEAF, Model for Early Allograft Function Scoring; MELDPOD5, Model for End-Stage Liver Disease score on postoperative day 5; EAD, early allograft dysfunction.

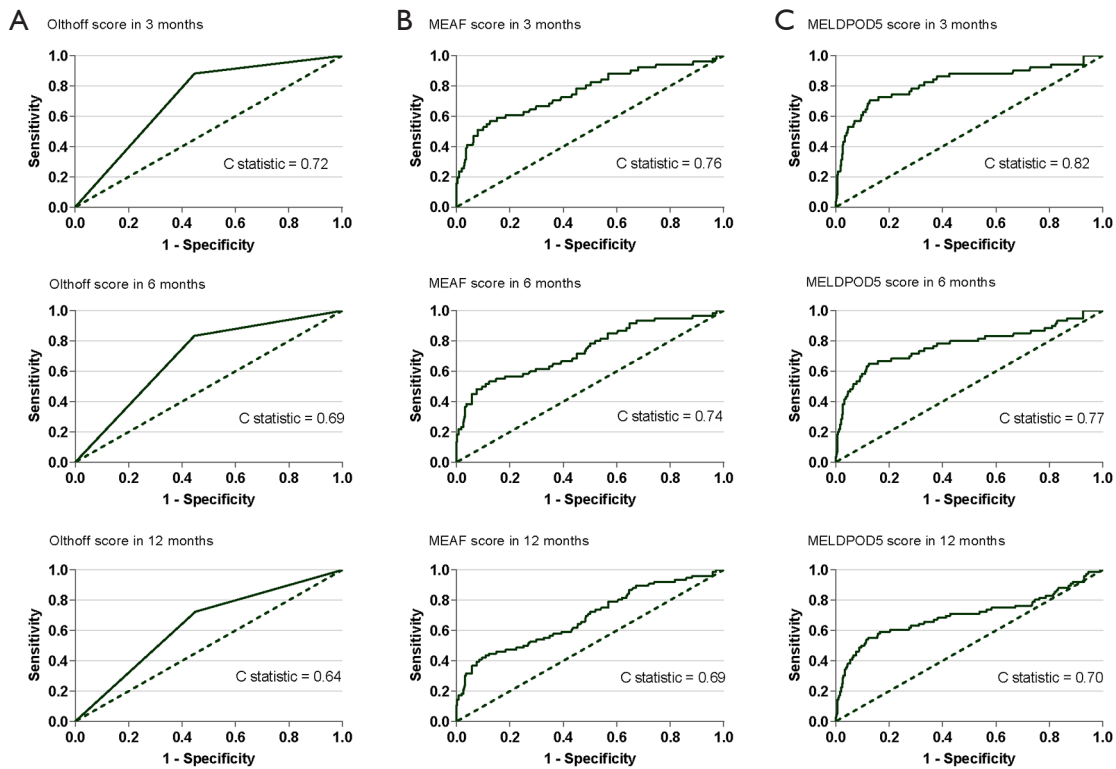


Figure S3 Comparison of the AUROC curve among three models of EAD to predict the patient survival at 3-month, 6-month, and 12-month follow-up. AUROC, area under the receiver operating characteristic; MEAF, Model for Early Allograft Function Scoring; MELDPOD5, Model for End-Stage Liver Disease score on Postoperative Day 5; EAD, early allograft dysfunction.

Table S1 The cutoff values of MELDPOD5 in different follow-ups

	Graft survival			Patient survival		
	3-month	6-month	12-month	3-month	6-month	12-month
Cutoff	18.2	18.2	18.2	18.2	18.2	18.2
Sensitivity	0.691	0.656	0.558	0.706	0.650	0.553
Specificity	0.874	0.877	0.879	0.872	0.876	0.878
Positive predictive value	0.340	0.372	0.402	0.336	0.339	0.393
Negative predictive value	0.968	0.958	0.932	0.970	0.962	0.932
Positive likelihood ratio	5.484	5.333	4.612	5.516	5.242	4.533
Negative likelihood ratio	0.354	0.392	0.503	0.337	0.400	0.509

MELDPOD5, the Model for End-Stage Liver Disease score on Postoperative Day 5.

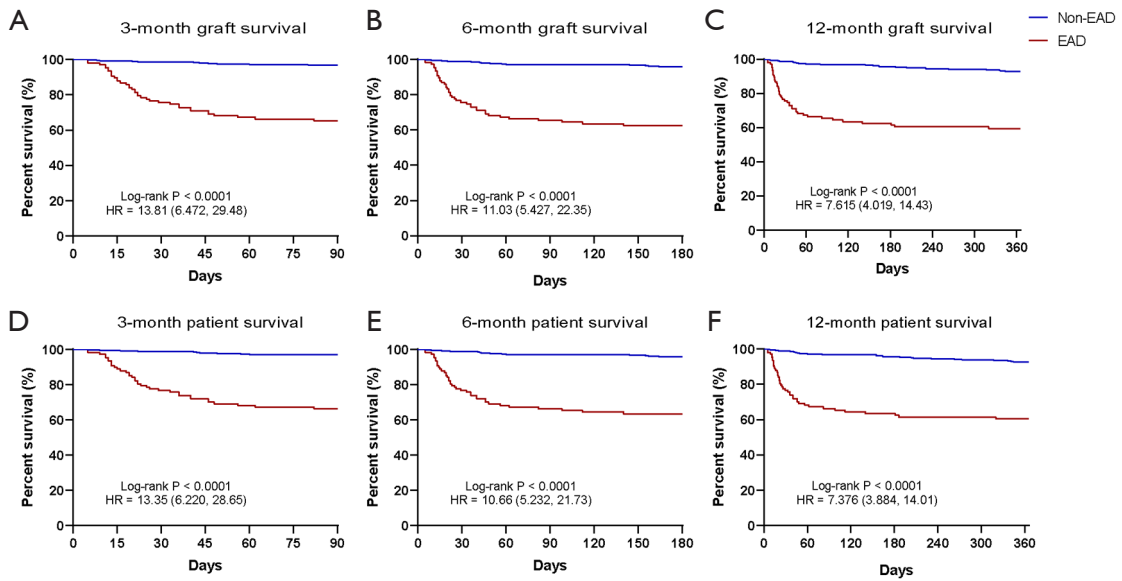


Figure S4 Kaplan-Meier survival curves of EAD defined by MELDPOD5 >18.2. Graft failure was defined as death or need for retransplantation during the period of observation. EAD, early allograft dysfunction; MELDPOD5, Model for End-Stage Liver Disease score on Postoperative Day 5.