

Table S1 Baseline characteristics of included patients

First Author; Year	Group	Age (years)	Male (%)	Hypertension (%)	Hyperlipidemia (%)	Diabetes (%)	Smoking (%)	Heart rate (beats/min)	SBP (mm Hg)	LVEF	Three vessel disease (%)
Cavender (15), 2009	CO-PCI; MV-PCI	66.312.8; 66.413.0	64.7; 64.2	63.4; 59.8	50.7; 50.6	27.3; 30.5	62.1; 56.1	NA	NA	NA	NA
van der Schaaf (16), 2010	CO-PCI; MV-PCI	67.411.4; 67.13.3	67.7; 81.1	25.8; 29.7	24.2; 24.3	21.8; 24.3	29.8; 29.7	NA	NA	NA	53.2; 62.2
Bauer (17), 2012	CO-PCI; MV-PCI	65.412.2; 67.212.2	68; 71	67; 60	55; 47	35; 40	54; 55	NA	NA	NA	46; 51
Cavender (18), 2013	CO-PCI; MV-PCI	6613; 6314	62; 72	79; 72	24; 16	31; 35	71; 67	8521; 9427	10726; 10623	3214; 249	52; 51
Mylotte (19), 2013	CO-PCI; MV-PCI	68.511.8; 6512.4	71.9; 75.8	48.5; 53	40.8; 45.5	25.2; 25.8	31.1; 34.8	9821.2; 9520	8321.2; 8215.7	30.39; 319.6	47.6; 51.5
Jaguszewski (20), 2013	CO-PCI; MV-PCI	6511.2; 64.711.7	74.7; 77.6	61.1; 56.5	57.9; 39.7	25; 26.1	54.5; 57.1	NA	NA	NA	NA
Yang (21), 2014	CO-PCI; MV-PCI	70; 57	57.9; 63.3	57.9; 50	23.4; 21.7	16.5; 21.7	35.6; 40	66.532.7; 71.835.2	8339; 87.633.8	45.913.9; 48.515.3	44.2; 46.7
Zeymer (22), 2015	CO-PCI; MV-PCI	70; 68	71; 72	78; 81	69; 69	35; 39	39; 32	NA	NA	NA	62; 70
Park (23), 2015	CO-PCI; MV-PCI	68; 65.5	65.8; 71	54.5; 53.7	9.7; 9.8	23.3; 25.6	46.6; 47.6	62; 66	80; 80	50.311.1; 49.815.3	39.9; 46
Hambraeus (24), 2016	CO-PCI; MV-PCI	71.310.9; 68.211.8	65.4; 67.2	39.5; 38.8	16.7; 22.4	23.6; 26.9	41.9; 49.3	NA	NA	NA	51.3; 25.4
Zeymer (25), 2017	CO-PCI; MV-PCI	6812; 6912	29.9; 26.3	75.1; 67.5	39.9; 42.2	32.4; 40.1	36.2; 28.3	9026; 9627	9223; 9722	3514.8; 34.613.7	62; 72.5
McNeice (26), 2018	CO-PCI; MV-PCI	NA	75.4; 75.3	58.6; 59.5	41.6; 46.5	29.9; 34.6	27.4; 19.1	NA	NA	29.3; 30.9	NA
Lee (12), 2019	CO-PCI; MV-PCI	67.312.8; 66.212.4	74.9; 73.5	54.6; 52.3	46.6; 46.9	40.9; 41.2	36.3; 40.4	NA	NA	4712.7; 44.313.2	33.3; 33.8
Petrovic (27), 2019	CO-PCI; MV-PCI	64.5; 70.0	89.3; 52.1	50.0; 60.6	32.1; 19.7	28.6; 30.3	21.4; 34.5	NA	NA	35.0; 35.0	NA
Lemor (28), 2020	CO-PCI; MV-PCI	63.311.6; 64.811.8	76.4; 81.8	NA	NA	55.1; 55.4	NA	95; 99	98; 95	NA	50.7; 49.2
Khera (29), 2020	CO-PCI; MV-PCI	66.6; 65.9	68.2; 68.5	71.4; 71.9	58.0; 59.8	31.7; 35.0	34.5; 31.4	NA	NA	NA	NA
Rathod (30), 2020	CO-PCI; MV-PCI	68.112.9; 66.513.2	76.6; 82.7	48.7; 41.6	3.7; 34.0	20.7; 19.5	37.1; 35.2	NA	NA	NA	45.0; 43.3
Vergara (31), 2021	CO-PCI; MV-PCI	70.512.7; 69.712.4	68.6; 66.7	45.3; 39.8	27.7; 30.1	23.3; 29.0	30.8; 28.0	NA	NA	29.59.6; 29.68.2	49.7; 62.4
Thiele (2,9), 2018	CO-PCI; MV-PCI	70; 70	74.9; 78.1	59; 61.5	33.1; 34.8	30.3; 34.6	25.4; 27.4	90; 91	85-130; 83-120	33; 30	63.6; 63.2

CO-PCI, culprit-only percutaneous coronary intervention; LVEF, left ventricular ejection fraction; MV-PCI, multivessel percutaneous coronary intervention; NA, not available; SBP, systolic blood pressure.

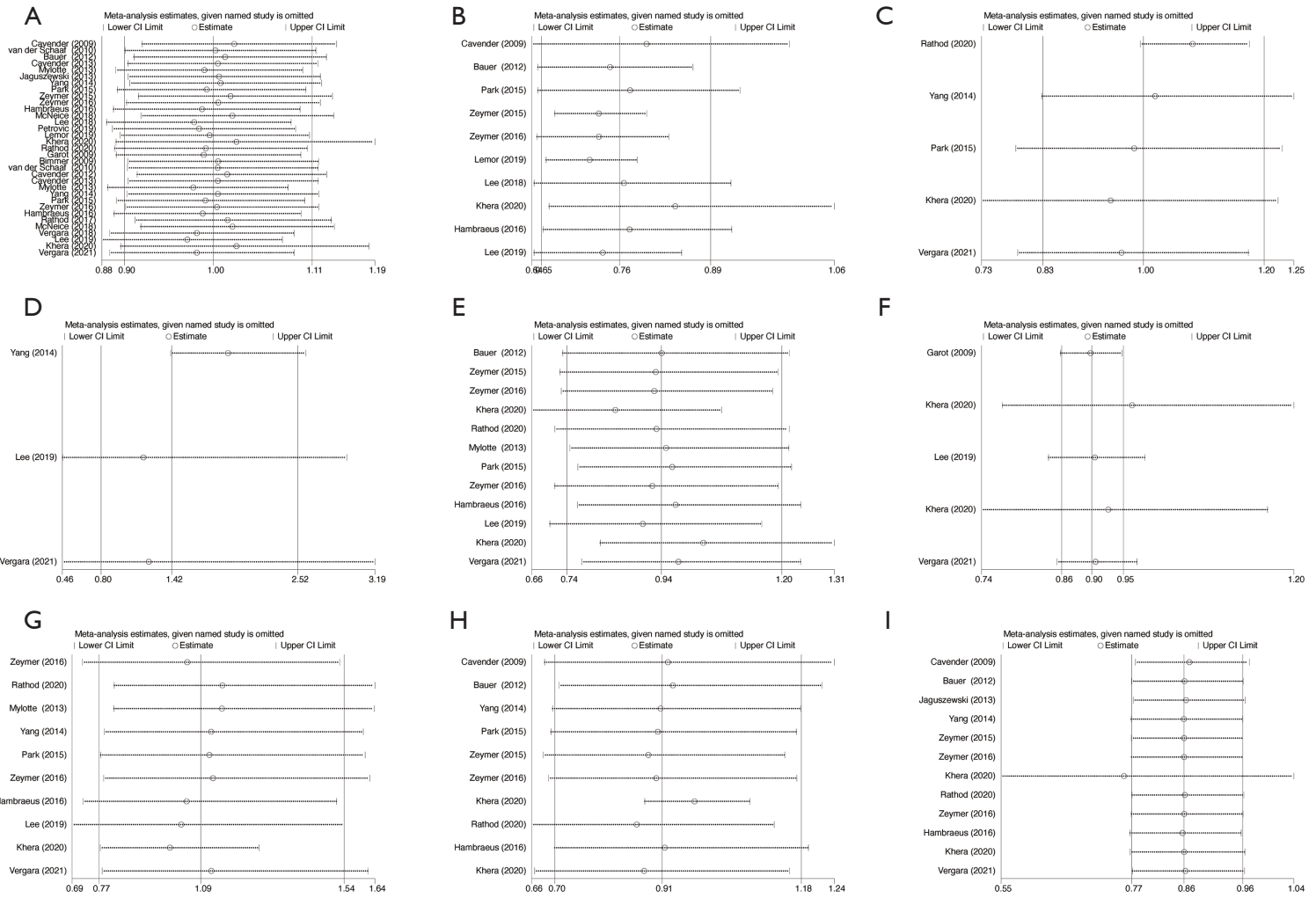


Figure S1 Sensitivity analyses of all-cause mortality (A), renal failure (B), major adverse cardiovascular events (C), cardiac death (D), myocardial infarction (E), heart failure (F), revascularization (G), bleeding (H), and stroke (I).

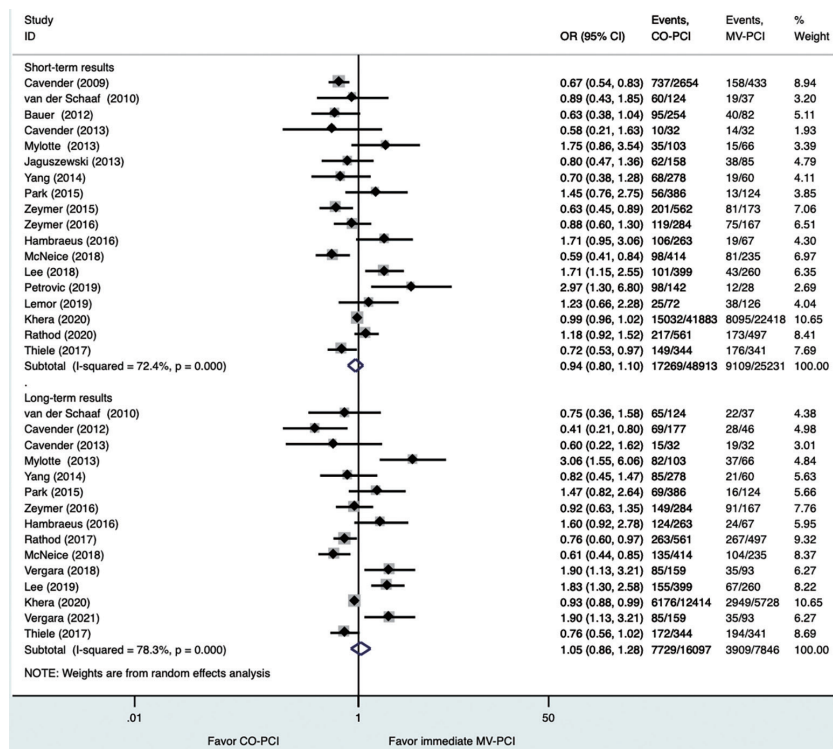


Figure S2 Analysis of all-cause mortality after adding randomized trial.

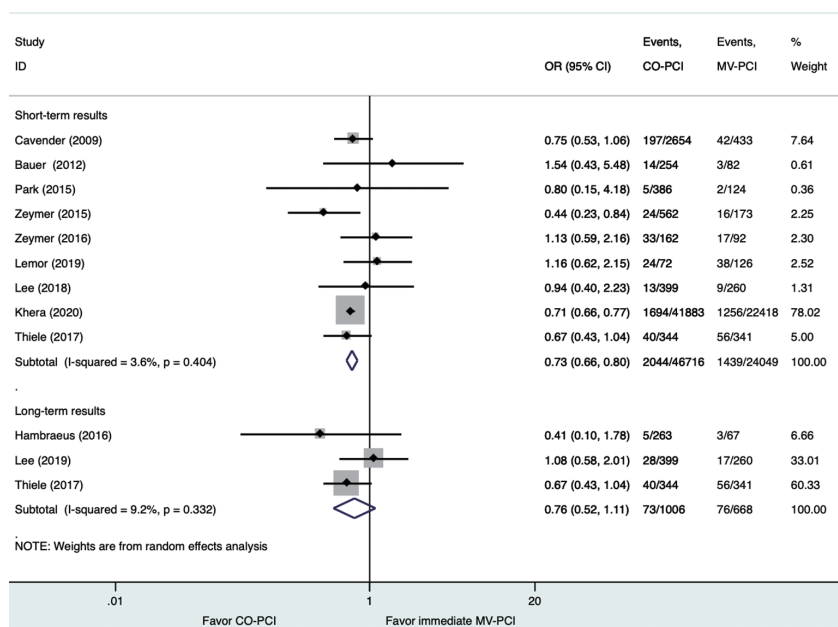


Figure S3 Analysis of renal failure after adding randomized trial.

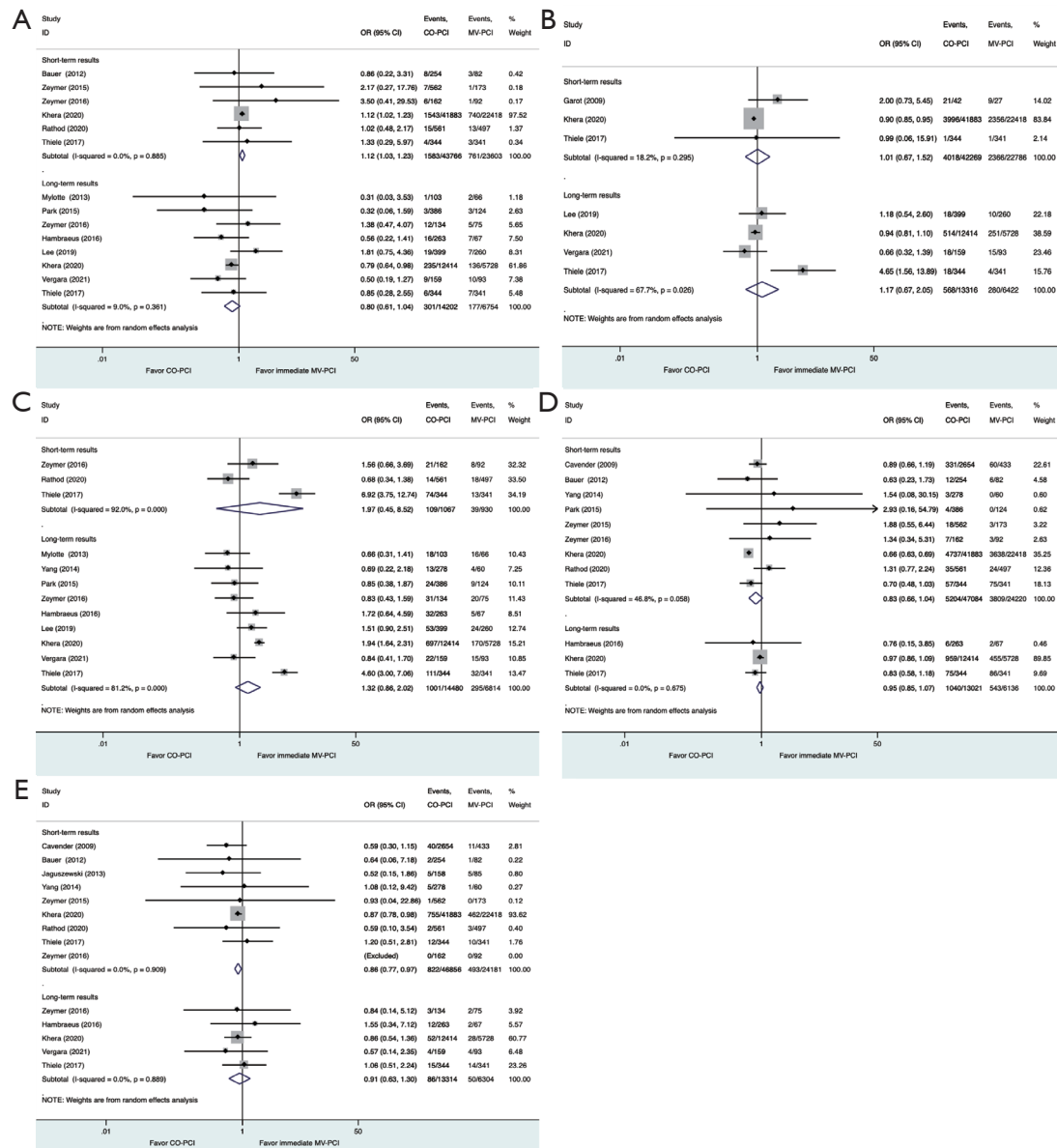


Figure S4 Analysis of myocardial infarction (A), heart failure (B), revascularization (C), bleeding (D), and stroke (E) after adding randomized trial.

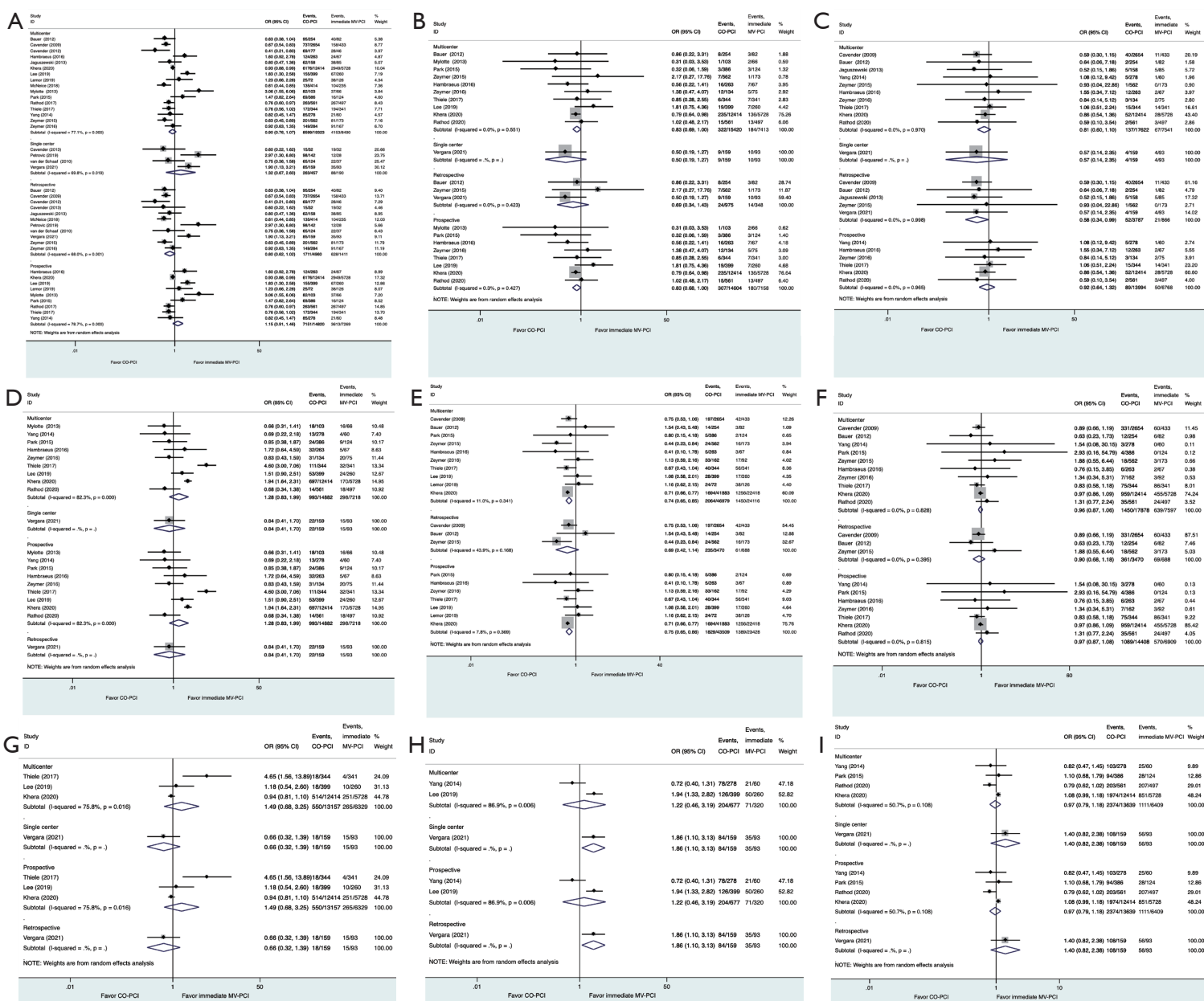


Figure S5 Subgroups analyses of all-cause death (A), myocardial infarction (B), stroke (C), revascularization (D), renal failure (E), bleeding (F), heart failure (G), cardiac death (H), and major adverse cardiovascular events (I) based on prospective versus retrospective, single center versus multicenter studies.

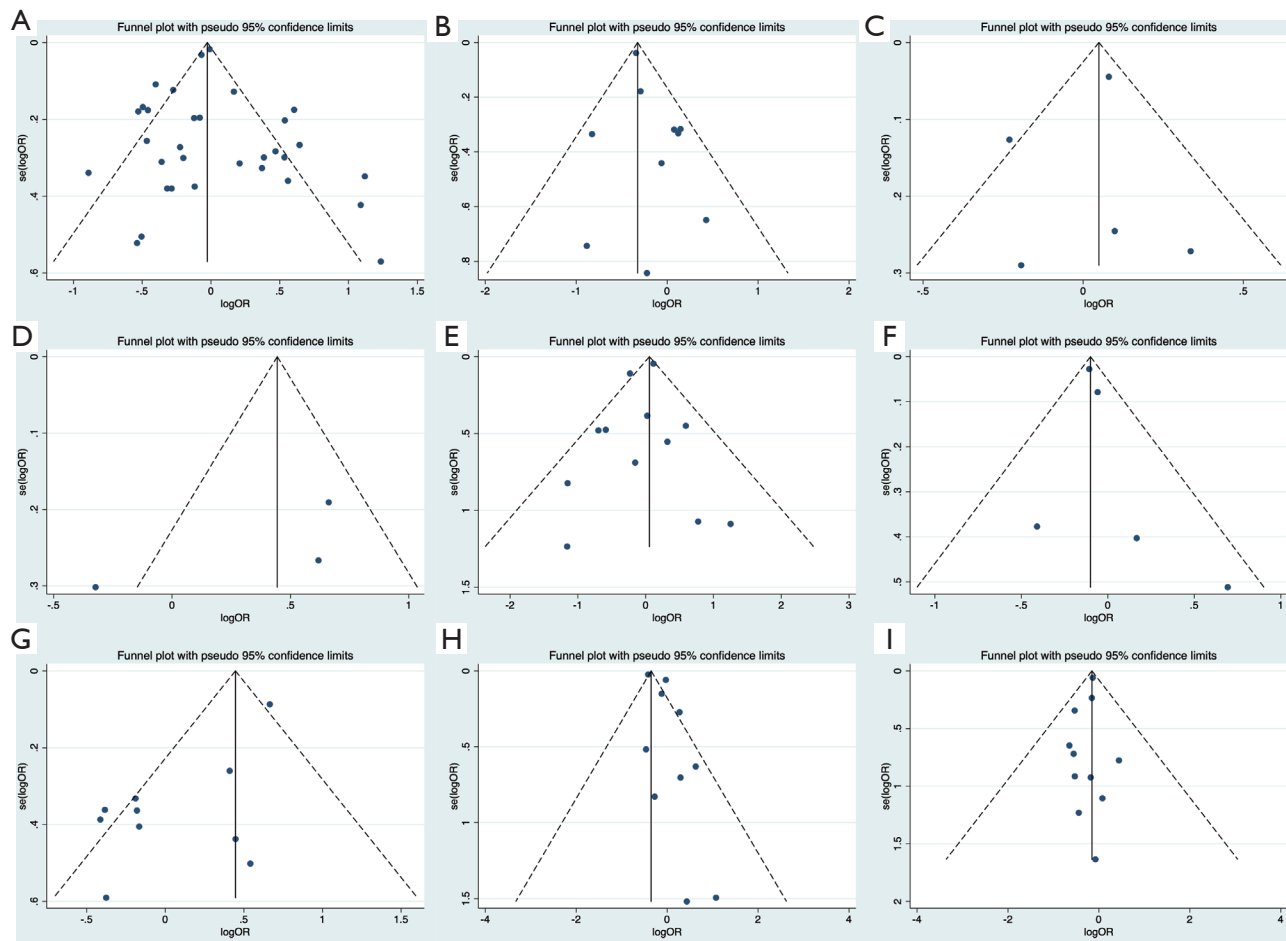


Figure S6 Funnel plot of all-cause mortality (A), renal failure (B), major adverse cardiovascular events (C), cardiac death (D), myocardial infarction (E), heart failure (F), revascularization (G), bleeding (H), and stroke (I).

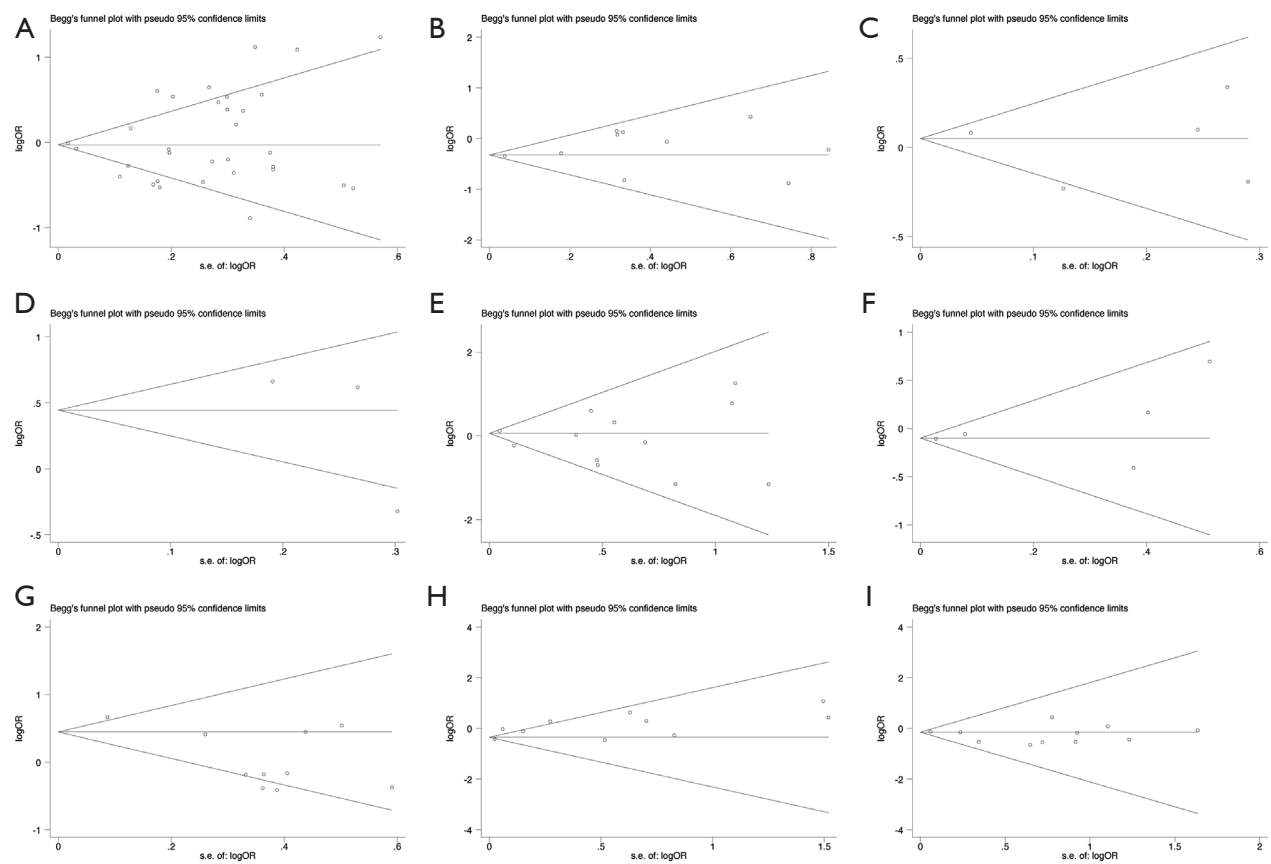


Figure S7 Begg's test of all-cause mortality (A), renal failure (B), major adverse cardiovascular events (C), cardiac death (D), myocardial infarction (E), heart failure (F), revascularization (G), bleeding (H), and stroke (I).