

Table S1 Clinical features of patients and control people

ID number	Type	Age(years)	Gender
1	IPF	72	Female
2	IPF	74	Male
3	IPF	57	Female
4	IPF	54	Male
5	IPF	77	Female
6	IPF	64	Male
7	IPF	59	Female
8	IPF	66	Female
9	IPF	59	Female
10	IPF	42	Male
11	IPF	46	Male
12	IPF	58	Female
13	IPF	66	Female
14	IPF	41	Male
15	IPF	59	Female
16	IPF	73	Female
17	IPF	52	Male
18	IPF	57	Female
19	Control	37	Male
20	Control	52	Male
21	Control	58	Female
22	Control	49	Male
23	Control	45	Male
24	Control	57	Female
25	Control	39	Male
26	Control	59	Male
27	Control	45	Female
28	Control	47	Female
29	Control	68	Female
30	Control	72	Male
31	Control	55	Male
32	Control	68	Female
33	Control	67	Female
34	Control	54	Male
35	Control	47	Male
36	Control	64	Female
37	Control	59	Male
38	Control	49	Female
39	Control	67	Male

IPF, Idiopathic pulmonary fibrosis.

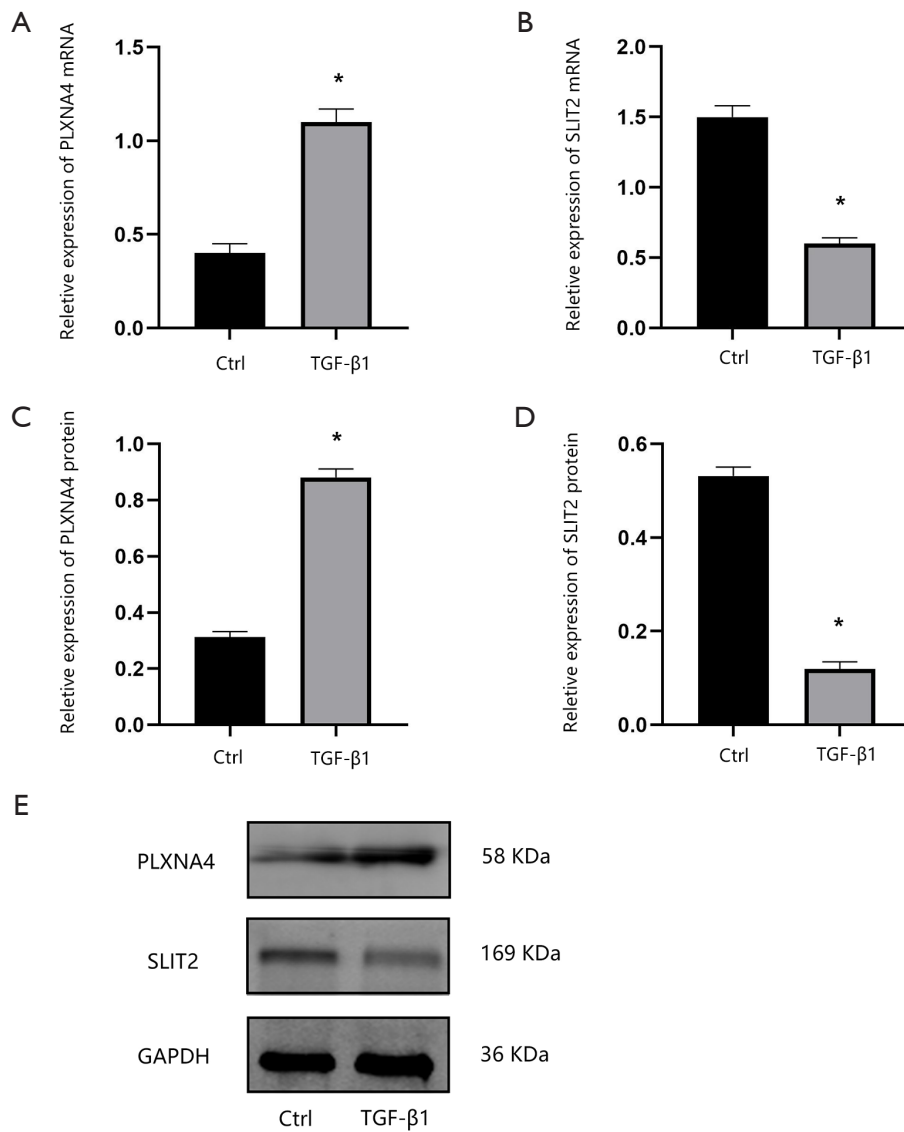


Figure S1 Expression of *PLXNA4* and *SLIT2* in human bronchial epithelial cells treated with TGF-β1. (A-B) mRNA levels of *PLXNA4* (A) and *SLIT2* (B) in human bronchial epithelial cells were detected by RT-qPCR; (C-E) Western blotting analysis of the effects of TGF-β1 on *PLXNA4* and *SLIT2* in human bronchial epithelial cells, *, $P < 0.05$. TGF-β1, transforming growth factor-β1; mRNA, messenger RNA; RT-qPCR, real-time quantitative polymerase chain reaction.