

Figure S1 Cochrane risk of bias summary for all included trials.

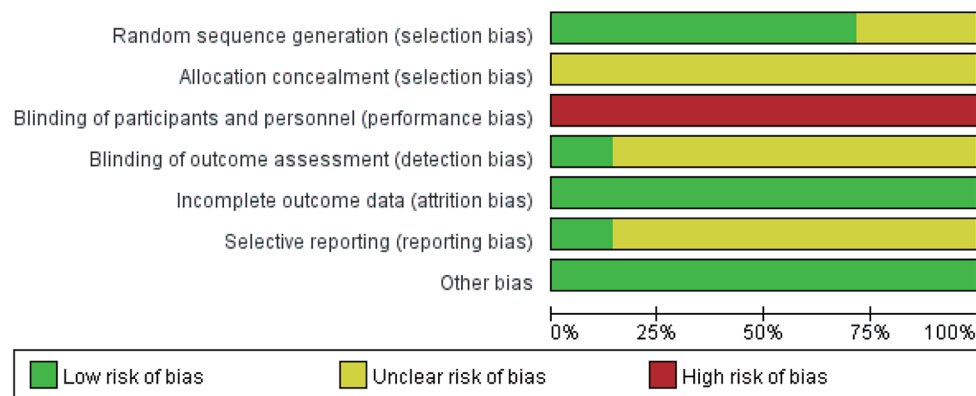
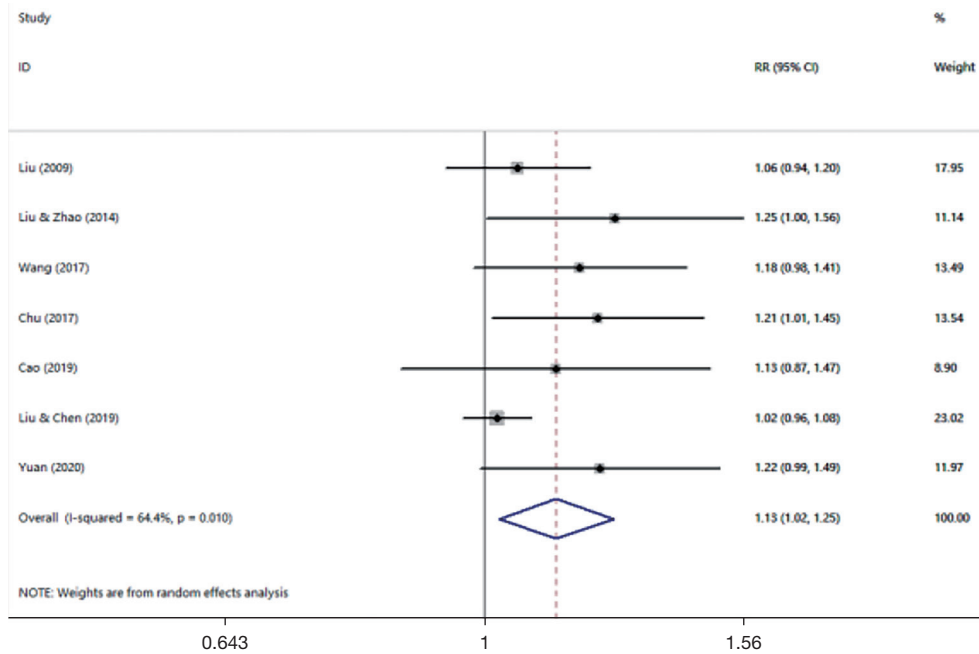
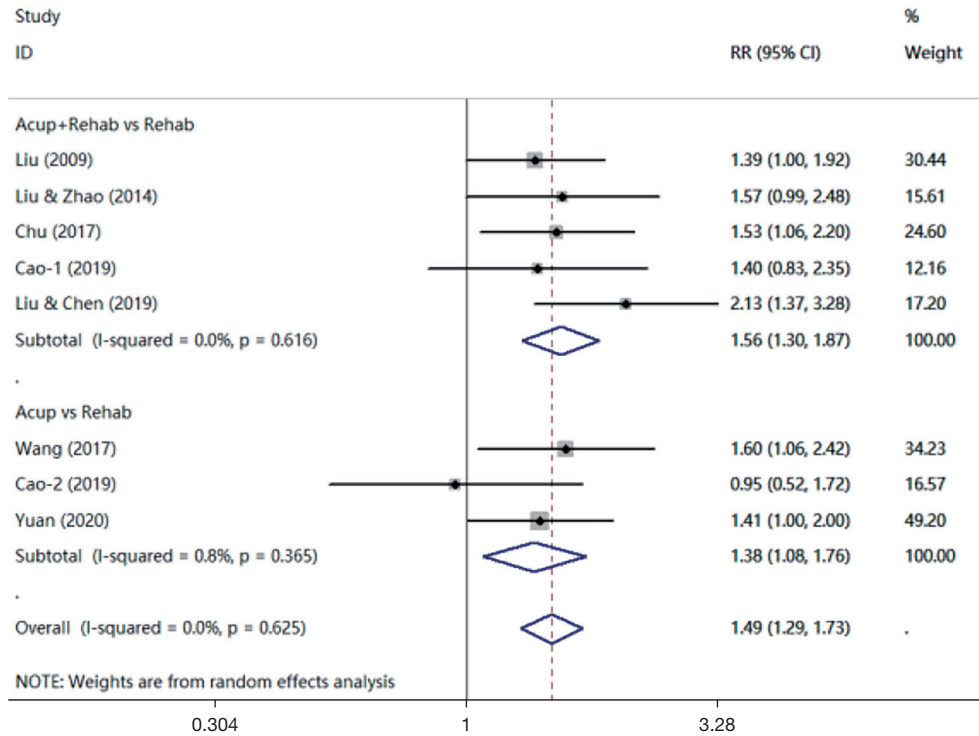


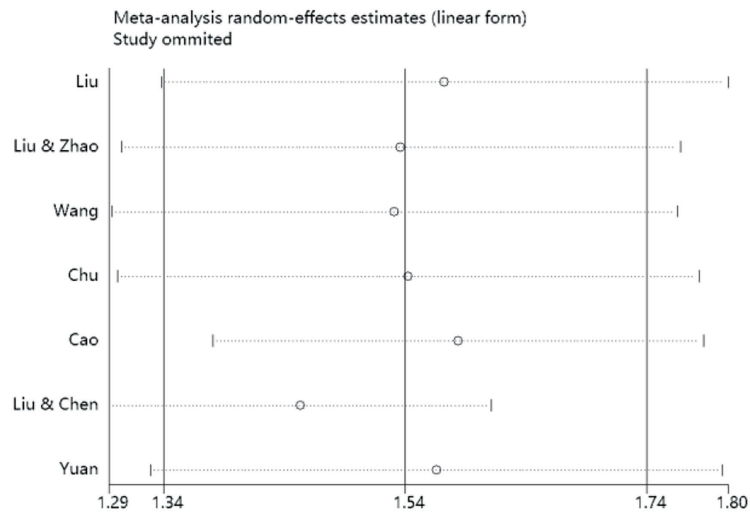
Figure S2 Risk of bias proportion for all included trials.



**Figure S3** Forest plot of the estimated RRtotal in dysphagia caused by pseudobulbar paralysis poststroke with acupuncture compared with rehabilitation. RR, risk ratio; CI, confidence interval.



**Figure S4** Subgroup analyses. RR, risk ratio; CI, confidence interval.



**Figure S5** Sensitivity analyses.

**Table S1** Acupoint summary

Study	Acupoints
Liu, 2009	GB20, LR3, KI3, ST40, LI4, RN6, SP10
Liu & Zhao, 2014	GB20, CV23, SJ17, Shanglianquan, EX-HN12
Wang, 2017	GB20, Aqiang, Zhiqiang, Tunyan, Tiyan, PC6, EX-HN12
Chu, 2017	GB20, CV23, EX-HN14, Gongxue, Zhiqiang, Tunyan, Fayin, Waijinjinyuye GB20
Cao, 2019	GB20, Shanglianquan, Ashi, GV15, DU20, CV22
Liu & Chen, 2019	GB20, CV23, EX-HN14, Gongxue, Zhiqiang, Tunyan, Fayin, Waijinjinyuye GB20
Yuan, 2020	CV23, GB12, GV26, PC6, ST36