

Figure S1 Funnel plot.

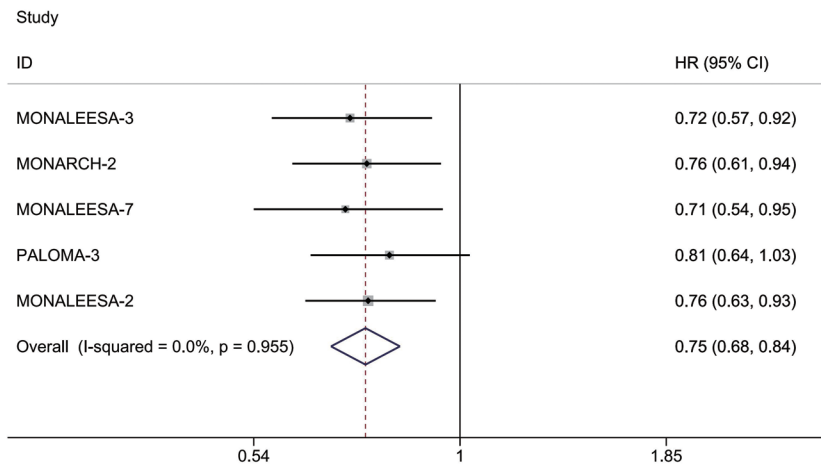


Figure S2 Sensitivity analysis of overall survival.

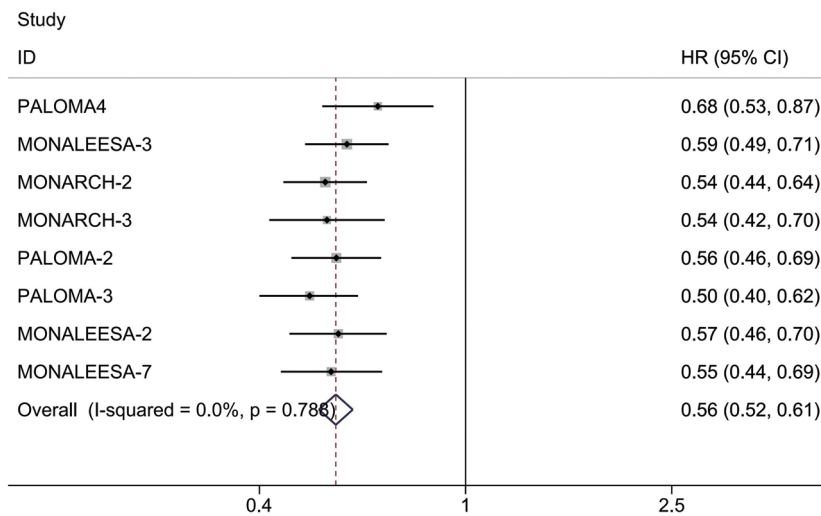


Figure S3 Sensitivity analysis of progression-free survival.

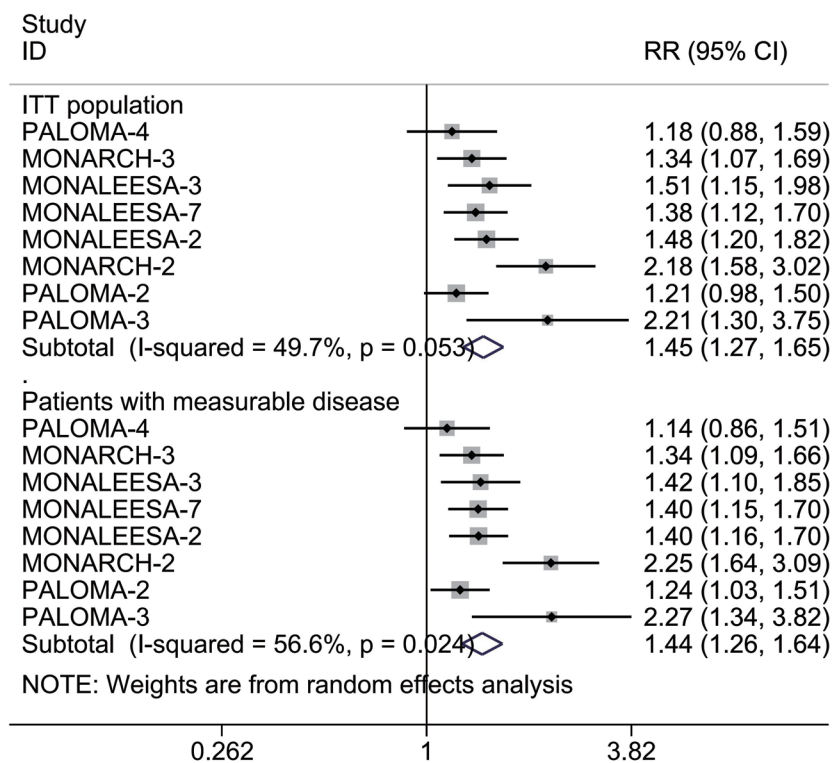


Figure S4 Sensitivity analysis of ORR in ITT population and patients with measurable disease. ORR, objective response rate; ITT, intention-to-treat.

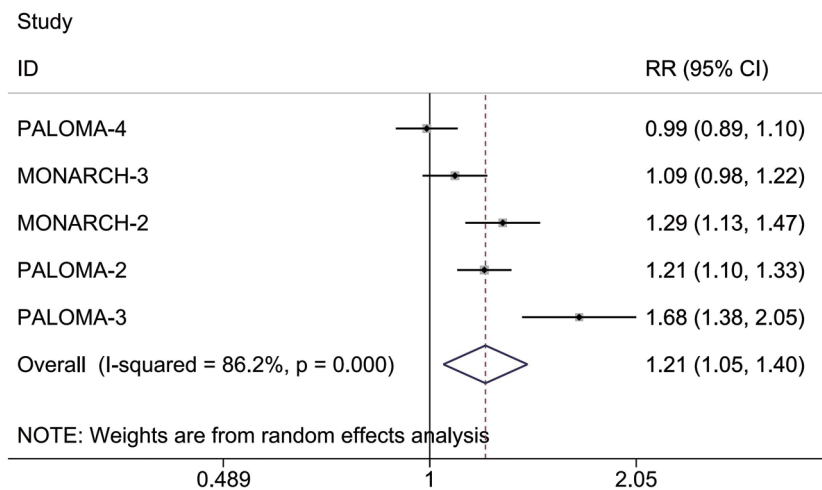


Figure S5 Sensitivity analysis of clinical benefit rate.