

## Appendix 1

## Search strategy PubMed

Set	Terms
#1	"Neoplasms"[Mesh] OR "Neoplasia"[tiab] OR "Neoplasias"[tiab] OR "Neoplasm"[tiab] OR "Tumors"[tiab] OR "Tumor"[tiab] OR "Cancer"[tiab] OR "Cancers"[tiab] OR "Malignancy"[tiab] OR "Malignancies"[tiab] OR "Malignant Neoplasms"[tiab] OR "Malignant Neoplasm"[tiab] OR "Neoplasm, Malignant"[tiab] OR "Neoplasms, Malignant"[tiab]
#2	"Palliative Care"[Mesh] OR "Hospice and Palliative Care Nursing"[Mesh] OR "Palliative Medicine"[Mesh] OR "Care, Palliative"[tiab] OR "Palliative Treatment"[tiab] OR "Palliative Treatments"[tiab] OR "Treatment, Palliative"[tiab] OR "Treatments, Palliative"[tiab] OR "Therapy, Palliative"[tiab] OR "Palliative Therapy"[tiab] OR "Palliative Supportive Care"[tiab] OR "Supportive Care, Palliative"[tiab] OR "Palliative Surgery"[tiab] OR "Surgery, Palliative"[tiab] OR "Palliative Nursing"[tiab] OR "Palliative Care Nursing"[tiab] OR "Hospice Nursing"[tiab] OR "Hospice Nursings"[tiab] OR "Nursing, Hospice"[tiab] OR "Nursings, Hospice"[tiab] OR "Palliative Care Medicine"[tiab] OR "Medicine, Palliative Care"[tiab] OR "Medicine, Palliative"[tiab]
#3	"Psychological Distress"[Mesh] OR "Anxiety"[Mesh] OR "Depression"[Mesh] OR "Quality of Life"[Mesh] OR "Distress, Psychological"[tiab] OR "Emotional Distress"[tiab] OR "Distress, Emotional"[tiab] OR "Emotional Stress"[tiab] OR "Stress, Emotional"[tiab] OR "Angst"[tiab] OR "Nervousness"[tiab] OR "Hypervigilance"[tiab] OR "Anxiousness"[tiab] OR "Social Anxiety"[tiab] OR "Anxieties, Social"[tiab] OR "Anxiety, Social"[tiab] OR "Social Anxieties"[tiab] OR "Depressions"[tiab] OR "Depressive Symptoms"[tiab] OR "Depressive Symptom"[tiab] OR "Symptom, Depressive"[tiab] OR "Symptoms, Depressive"[tiab] OR "Emotional Depression"[tiab] OR "Depression, Emotional"[tiab] OR "Depressions, Emotional"[tiab] OR "Emotional Depressions"[tiab] OR "Life Quality"[tiab] OR "Health-Related Quality Of Life"[tiab] OR "Health Related Quality Of Life"[tiab] OR "HRQOL"[tiab]
#4	((("randomized controlled trial"[pt] OR "Controlled Clinical Trial"[pt] OR "randomized"[tiab] OR "randomised"[tiab] OR "randomization"[tiab] OR "randomisation"[tiab] OR "placebo"[tiab] OR "randomly"[tiab] OR "trial"[tiab] OR "groups"[tiab] OR "Comparative Study"[pt] OR "Controlled Clinical Trial"[pt] OR "Nonrandom"[tiab] OR "Nonrandom"[tiab] OR "nonrandomized"[tiab] OR "non-randomized"[tiab] OR "nonrandomised"[tiab] OR "quasi experiment"[tiab] OR "quasiexperiment"[tiab] OR "quasirandom"[tiab] OR "quasi random"[tiab] OR "quasi control"[tiab] OR "quasicontrol"[tiab] OR ("controlled"[tiab] AND ("trial"[tiab] OR "study"[tiab]))) NOT ("animals"[Mesh] NOT "humans"[Mesh])) NOT ("Editorial"[pt] OR "Letter"[pt] OR "case reports"[pt] OR "Comment"[pt])
#5	#1 AND #2 AND #3 AND #4

## Search strategy EMBASE

('advanced cancer'/exp OR 'terminal cancer'/exp OR 'malignant neoplasm'/exp OR 'cancer' OR 'cancers' OR 'malignant neoplasia' OR 'malignant neoplasm' OR 'malignant neoplastic disease' OR 'malignant tumor' OR 'malignant tumour' OR 'neoplasia, malignant' OR 'tumor, malignant' OR 'tumour, malignant') AND ('palliative therapy'/exp OR 'palliation' OR 'palliative care' OR 'palliative consultation' OR 'palliative medicine' OR 'palliative radiotherapy' OR 'palliative surgery' OR 'palliative therapy' OR 'palliative treatment' OR 'symptomatic treatment') AND ('mental disease assessment'/exp OR 'mental disease assessment' OR 'psychiatric disorder assessment') AND ('randomized controlled trial'/exp OR 'controlled trial, randomized' OR 'randomised controlled study' OR 'randomised controlled trial' OR 'randomized controlled study' OR 'randomized controlled trial' OR 'trial, randomized controlled')

## Search strategy Cochrane Library

- #1 MeSH descriptor: [Neoplasms] explode all trees 83,592
- #2 (Neoplasia):ti,ab,kw (Word variations have been searched) 3,038
- #3 (Tumor):ti,ab,kw (Word variations have been searched) 76,773
- #4 (cancer):ti,ab,kw (Word variations have been searched) 172,435
- #5 (Malignancy):ti,ab,kw (Word variations have been searched) 27,817
- #6 #1 OR #2 OR #3 OR #4 OR #5 231,645
- #7 (Palliative Care):ti,ab,kw (Word variations have been searched) 4,959

- #8 (Psychological Distress):ti,ab,kw (Word variations have been searched) 8,562
- #9 (Depression):ti,ab,kw (Word variations have been searched) 91,972
- #10 (Anxiety):ti,ab,kw (Word variations have been searched) 56,170
- #11 (Quality of Life):ti,ab,kw (Word variations have been searched) 127,645
- #12 #8 OR #9 OR #10 OR #11 228,516
- #13 #6 AND #7 AND #12 1,711

***Search strategy psycINFO***

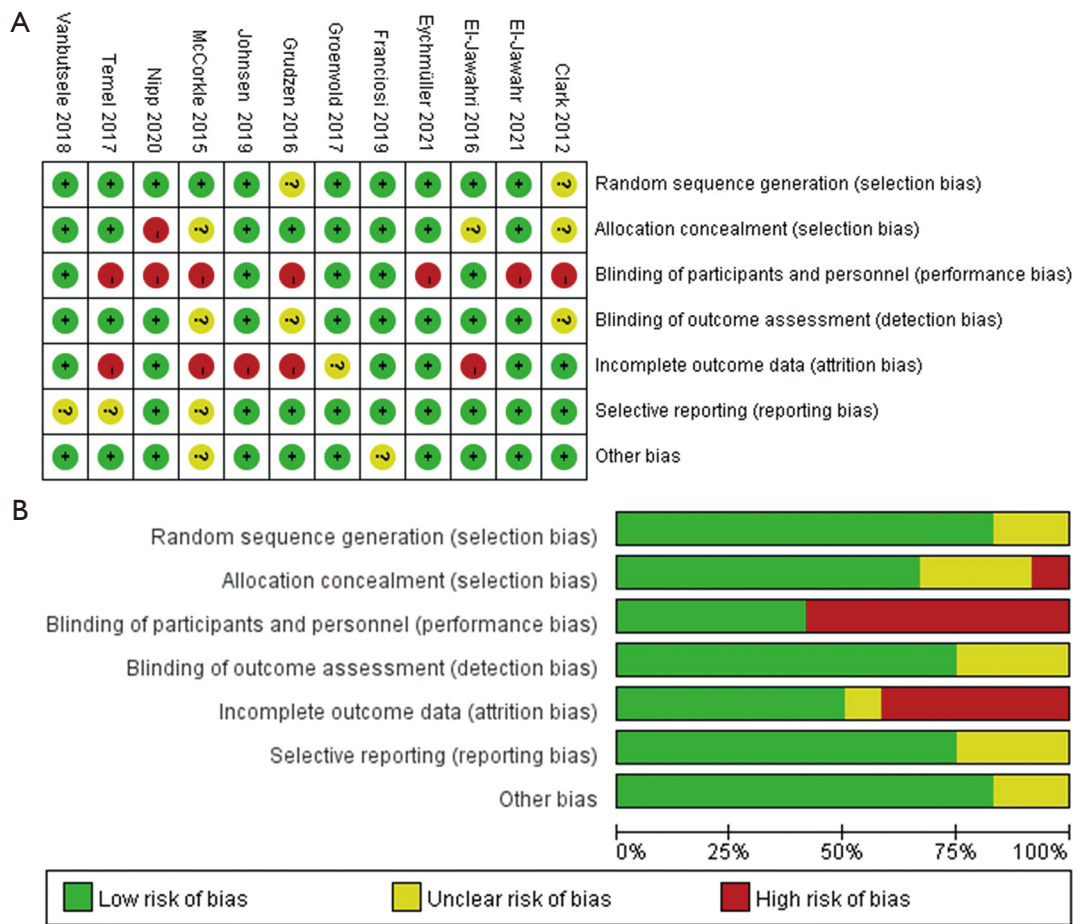
**The qualified condition is RCT**

((terminal cancer) OR (advanced cancer) OR Malignancy OR Tumor OR Neoplasms) AND ((Palliative Care) OR (Hospice and Palliative Care Nursing) OR (Palliative Medicine) OR (Palliative Treatment)) AND ((Psychological Distress) OR (Anxiety) OR (Depression) OR (Quality of Life) OR (Emotional Distress))

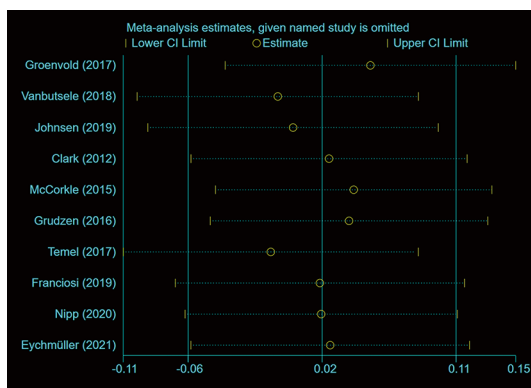
***Search strategy CINAHL***

**Qualifications - English; Research papers; Do not include the Pre - CINAHL; Exclude MEDLINE records; Humans; Age group: All Adult Search mode - Boolean logic/phrase**

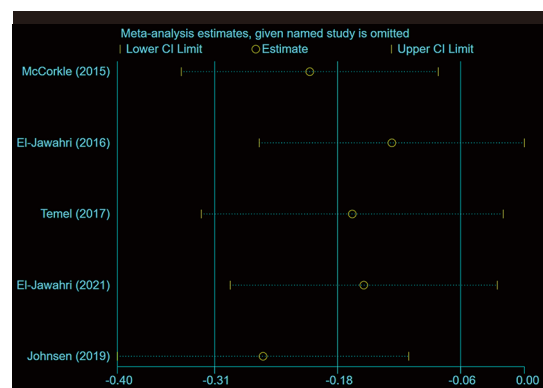
((terminal cancer) OR (advanced cancer) OR Malignancy OR Tumor OR Neoplasms) AND ((Palliative Care) OR (Hospice and Palliative Care Nursing) OR (Palliative Medicine) OR (Palliative Treatment)) AND ((Psychological Distress) OR (Anxiety) OR (Depression) OR (Quality of Life) OR (Emotional Distress))



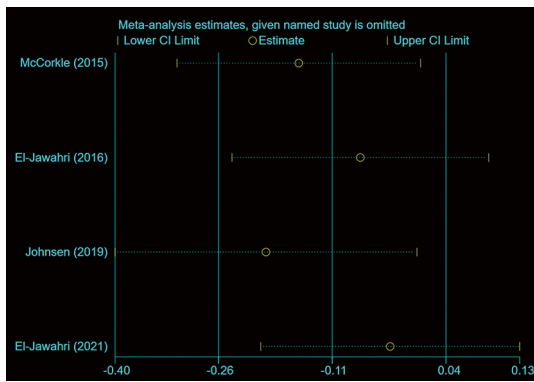
**Figure S1** Quality assessment of RCTs. (A) Risk of bias summary: review authors' judgments about each risk of bias item for each included study. (B) Risk of bias graph: review authors' judgments about each risk of bias item presented as percentages across all included studies.



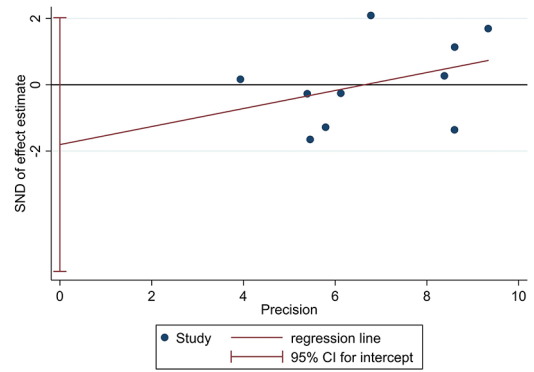
**Figure S2** The forest plot of the sensitivity analysis of IPC on overall QoL.



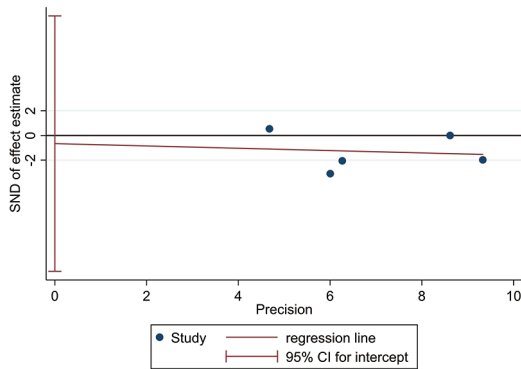
**Figure S3** The forest plot of the sensitivity analysis of IPC on depression symptom.



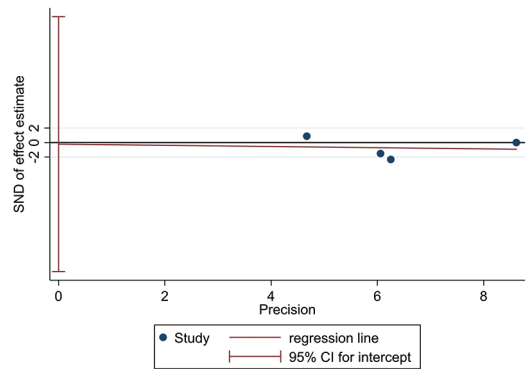
**Figure S4** The forest plot of the sensitivity analysis of IPC on anxiety symptom.



**Figure S5** Funnel plot for publication bias on overall QoL.



**Figure S6** Funnel plot for publication bias on depression symptom.



**Figure S7** Funnel plot for publication bias on anxiety symptom.