

Figure S1 Forest plot of four analyses. (A) Respiratory symptoms; (B) nasal symptoms; (C) fever; (D) cough. CI, confidence interval.

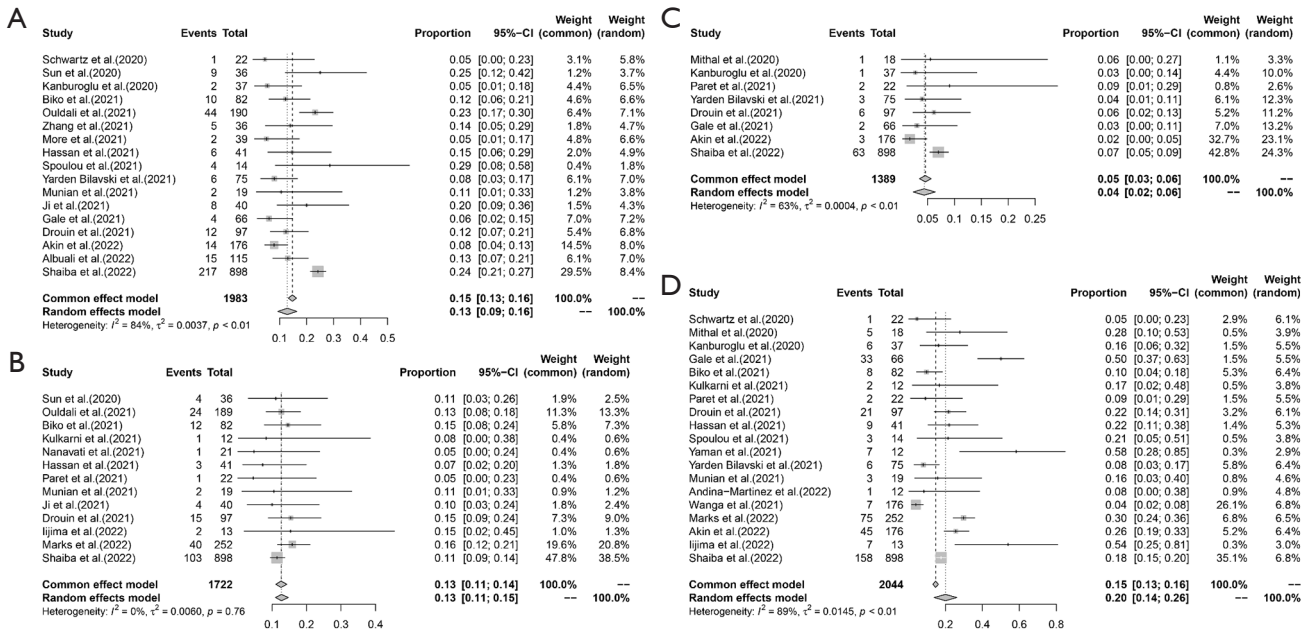


Figure S2 Forest plot of four analyses. (A) Diarrhea; (B) vomit; (C) rash; (D) feeding difficulty. CI, confidence interval.

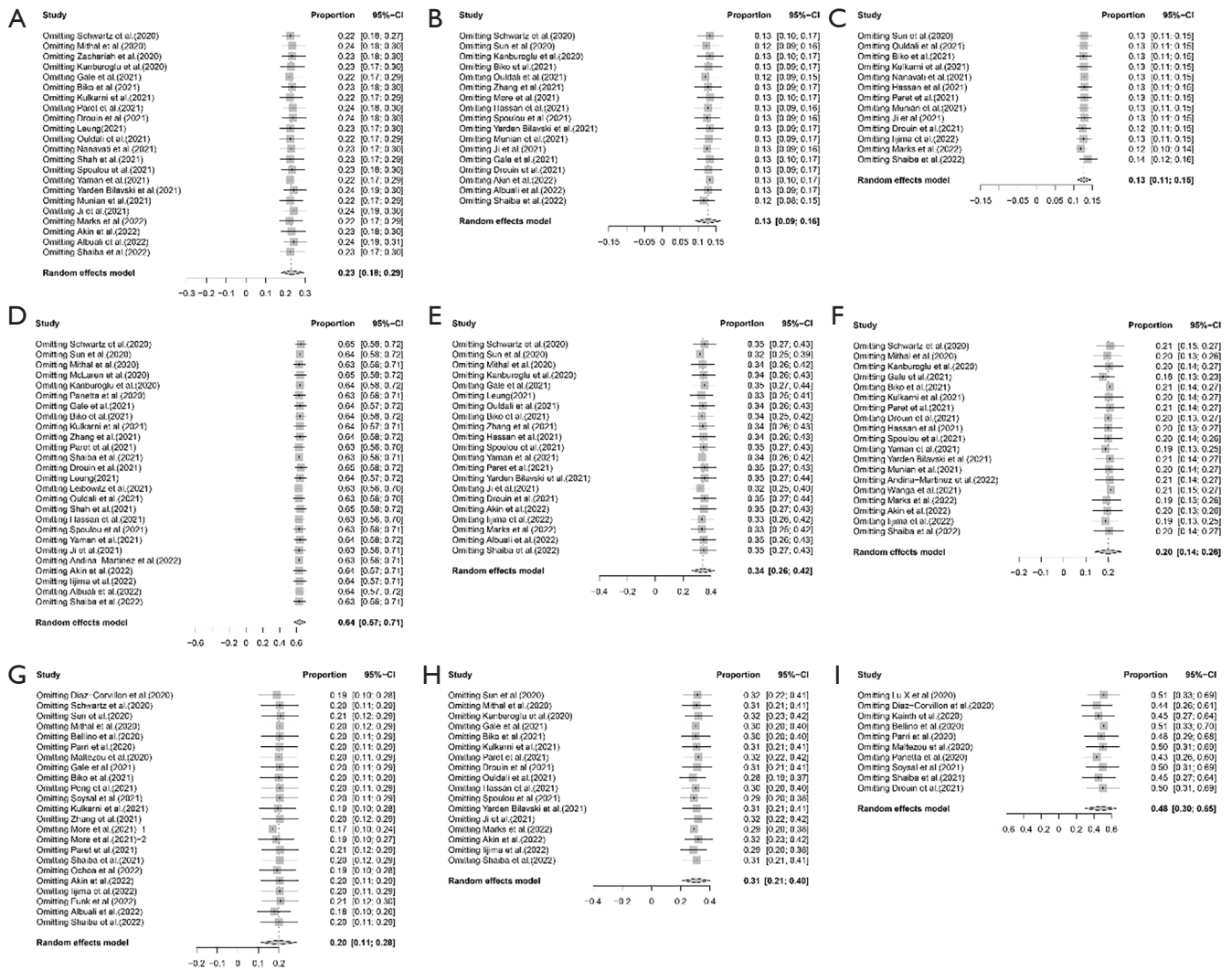


Figure S3 Sensitive analysis. (A) respiratory symptoms; (B) diarrhea; (C) vomit; (D) fever; (E) cough; (F) feeding difficulty; (G) asymptomatic infection; (H) nasal symptoms; (I) mild symptoms. CI, confidence interval.

Table S1 Quality assessment of included studies by tool for evaluating the methodological quality of case reports and case series

Author	Year	Type of study	Selection	Ascertainment		Causality	Reporting
			Q1	Q2	Q3	Q4	Q5
Lu <i>et al.</i>	2020	Case reports and case series	*	*	*	*	.
Díaz-Corvillón <i>et al.</i>	2020	Case reports and case series	*	*	*	*	*
Zachariah <i>et al.</i>	2020	Case reports and case series	*	*	*	*	*
McLaren <i>et al.</i>	2020	Case reports and case series	*	*	*	*	*
Sun <i>et al.</i>	2020	Case reports and case series	*	*	*	*	*
Mithal <i>et al.</i>	2020	Case reports and case series	*	*	*	*	*
Bellino <i>et al.</i>	2020	Case reports and case series	*	*	*	*	.
Leung	2021	Case reports and case series	*	*	*	*	*
Parri <i>et al.</i>	2020	Case reports and case series	*	*	*	*	*
Biko <i>et al.</i>	2021	Case reports and case series	*	*	*	*	.
Maltezou <i>et al.</i>	2020	Case reports and case series	*	*	*	*	.
Peng <i>et al.</i>	2021	Case reports and case series	*	*	*	*	*
Soysal <i>et al.</i>	2021	Case reports and case series	*	*	*	*	*
Ouldali <i>et al.</i>	2021	Case reports and case series	*	*	*	*	*
Bayesheva <i>et al.</i>	2021	Case reports and case series	*	*	*	*	.
Panetta <i>et al.</i>	2020	Case reports and case series	*	*	*	*	*
Kulkarni <i>et al.</i>	2021	Case reports and case series	*	*	*	*	.
Zhang <i>et al.</i>	2021	Case reports and case series	*	*	*	*	*
Shah <i>et al.</i>	2021	Case reports and case series	*	*	*	*	.
More <i>et al.</i>	2021	Case reports and case series	*	*	*	*	.
Spoulou <i>et al.</i>	2021	Case reports and case series	*	*	*	*	*
Paret <i>et al.</i>	2021	Case reports and case series	*	*	*	*	*
Shaiba <i>et al.</i>	2021	Case reports and case series	*	*	*	*	.
Munian <i>et al.</i>	2021	Case reports and case series	*	*	*	*	.
Ji <i>et al.</i>	2021	Case reports and case series	*	*	*	*	*
Drouin <i>et al.</i>	2021	Case reports and case series	*	*	*	*	*
Ochoa <i>et al.</i>	2022	Case reports and case series	*	*	*	*	.
Wanga <i>et al.</i>	2022	Case reports and case series	*	*	*	*	*
Akin <i>et al.</i>	2022	Case reports and case series	*	*	*	*	*
Iijima <i>et al.</i>	2022	Case reports and case series	*	*	*	*	.
Marks <i>et al.</i>	2022	Case reports and case series	*	*	*	*	*

In the tool for evaluating the methodological quality of case reports and case series, “*” represents “Yes” and “.” represents “No”. Q1: Does the patient(s) represent(s) the whole experience of the investigator (centre) or is the selection method unclear to the extent that other patients with similar presentation may not have been reported? Q2: Was the exposure adequately ascertained? Q3: Was the outcome adequately ascertained? Q4: Was follow-up long enough for outcomes to occur? Q5: Is the case(s) described with sufficient details to allow other investigators to replicate the research or to allow practitioners make inferences related to their own practice?

Table S2 Quality assessment of included studies by Newcastle-Ottawa scale

Author	Year	Type of study	Selection	Comparability	Exposure	Scores
Gale <i>et al.</i>	2021	Prospective cohort study	***	*	*	5
Schwartz <i>et al.</i>	2022	Retrospective cohort study	***	*	**	6
Kainth <i>et al.</i>	2020	Retrospective cohort study	****	*	*	6
Kanburoglu <i>et al.</i>	2020	Prospective multicentered cohort study	***	*	*	5
Leibowitz <i>et al.</i>	2021	Retrospective single-center study	****	**	**	8
Nanavati <i>et al.</i>	2021	Retrospective, single-center observational study	***	**	*	6
Hassan <i>et al.</i>	2021	Retrospective study	***	**	*	6
Yaman <i>et al.</i>	2021	Cohort study	***	*	*	5
Yarden Bilavski <i>et al.</i>	2021	Cohort study	***	*	*	5
Andina-Martinez <i>et al.</i>	2022	Prospective multicenter cohort	***	**	*	6
Funk <i>et al.</i>	2022	Prospective cohort study	****	**	**	8
Albuali <i>et al.</i>	2022	Retrospective cohort multicenter study	****	**	*	7
Shaiba <i>et al.</i>	2022	Prospective cohort study	***	*	*	5

In Newcastle-Ottawa scale, a “*” represents “a score”.