

Table S1 OS data of the studied population based on different variables (study population, palliative care assessment, age, sex, PD-L1 expression, ECOG, and histology)

Variables	OS (95% CI) (months)	P value	
		P _{log-rank}	P _{Breslow}
Study population	8 (6.32–9.67)		
Palliative care referrals		0.10	<0.001
PCU derivatives	13 (7.7–18.2)		
No derivatives	6 (4.6–7.4)		
Age (years)		0.12	0.038
≥75	6 (4.8–71)		
<75	10 (7.8–12.2)		
Sex		0.63	0.56
Man	8 (5.4–10.6)		
Woman	7 (3.9–10.1)		
PD-L1 expression		0.87	0.12
≥50%	6 (3.9–8.1)		
<50%	8 (5.3–10.7)		
ECOG at diagnosis		<0.001	<0.001
0	18 (8.9–27.1)		
1	9 (6.4–11.6)		
2	4 (2.4–5.6)		
Histology		0.15	0.41
Adenocarcinoma	8 (6.2–9.8)		
Epidermoid	12 (1.7–22.3)		
Undifferentiated	6 (4.3–7.6)		

OS, overall survival; PD-L1, programmed death-ligand 1; ECOG, Eastern Cooperative Oncology Group; CI, confidence interval; PCU, palliative care unit.

Table S2 Data on the time between the last treatment cycle and patient death, expressed in days, based on different variables analyzed in the study (palliative care assessment, age, PD-L1 expression, histology, and ECOG)

Variables	Distance LC and exitus (days)	P value	
		P _{log-rank}	P _{Breslow}
Study population	38 (30.6–45.4)		
Referral to palliative care		<0.001	<0.001
PCU derivative	56 (41.6–70.4)		
Not derived PCU	27 (19.4–34.5)		
Age (years)		<0.001	0.046
≥75	47 (33.9–60.1)		
<75	34 (24.9–43.1)		
PD-L1 expression		0.034	0.10
≥50%	32 (21.1–42.8)		
<50%	43 (29.0–57.0)		
Histology		0.49	0.52
Adenocarcinoma	38 (29.3–46.7)		
Epidermoid	43 (21.2–64.8)		
Undifferentiated	31 (27.7–34.3)		
ECOG last cycle		0.87	0.94
ECOG 0	34 (0.0–74.0)		
ECOG 1	34 (28.3–39.7)		
ECOG 2	43 (30.3–55.7)		
ECOG 3	36 (26.2–45.8)		

Data are expressed as median (95% CI). PD-L1, programmed death-ligand 1; ECOG, Eastern Cooperative Oncology Group; LC, last cycle; PCU, palliative care unit; CI, confidence interval.

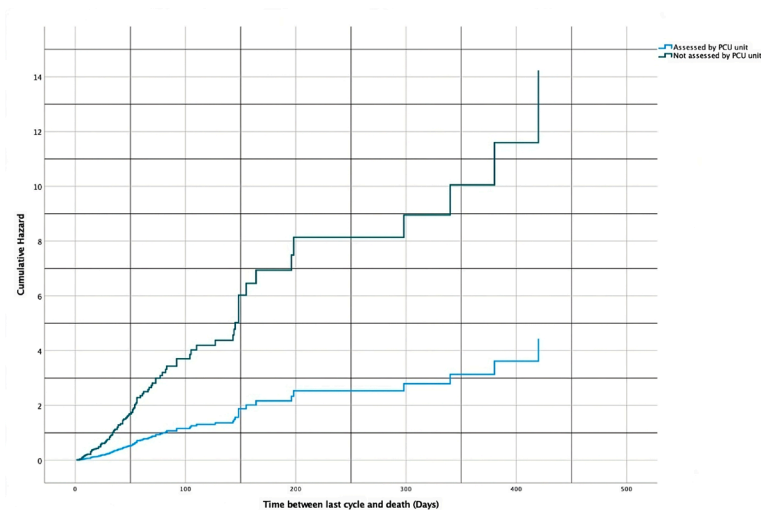


Figure S1 Hazard function obtained in Cox regression. PCU. PCU, palliative care unit.