

Figure S1 The gating strategy for ICOS⁺, HLA-DR⁺, and naive CD4⁺T cells. The threshold for HLA-DR and ICOS is defined via the method of fluorescence minus one (FMO).

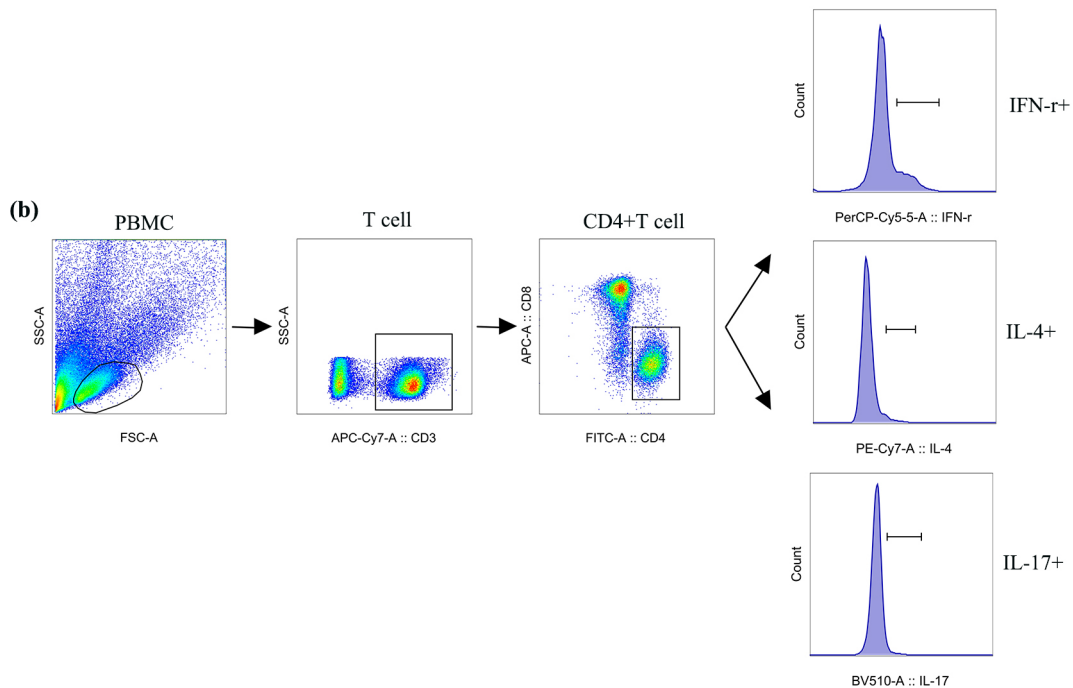


Figure S2 The gating strategy for IFN- γ ⁺, IL-4⁺, and IL-17⁺ CD4⁺T cells after stimulation by Phorbol-12-myristate-13-acetate (PMA) *in vitro*.

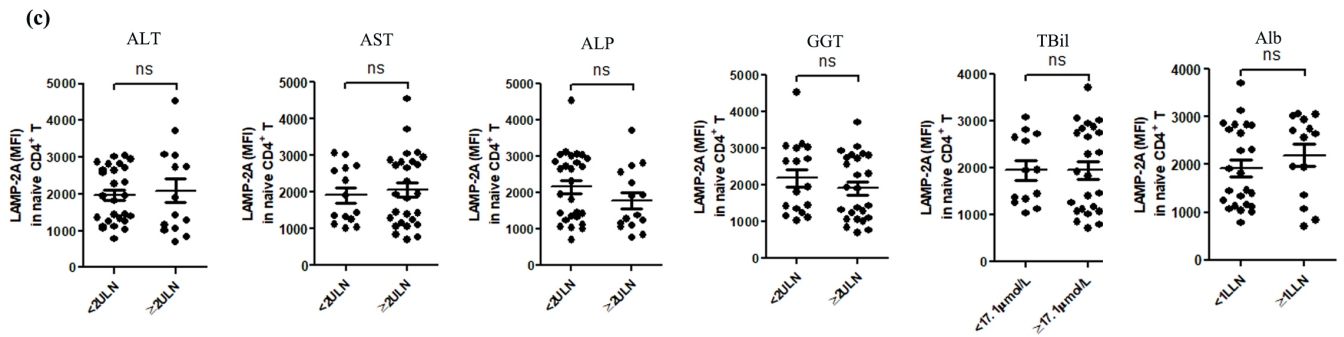


Figure S3 The LAMP-2A expression in naïve CD4⁺T cells was independent of hepatic biochemical indices, including alanine aminotransferase (ALT), aspartate transaminase (AST), alkaline phosphatase (ALP), gamma-glutamyl transpeptidase (GGT), total bilirubin (TBil), and albumin (Alb) [upper limit of normal (ULN), lower limits of normal (LLN)].