

Supplementary

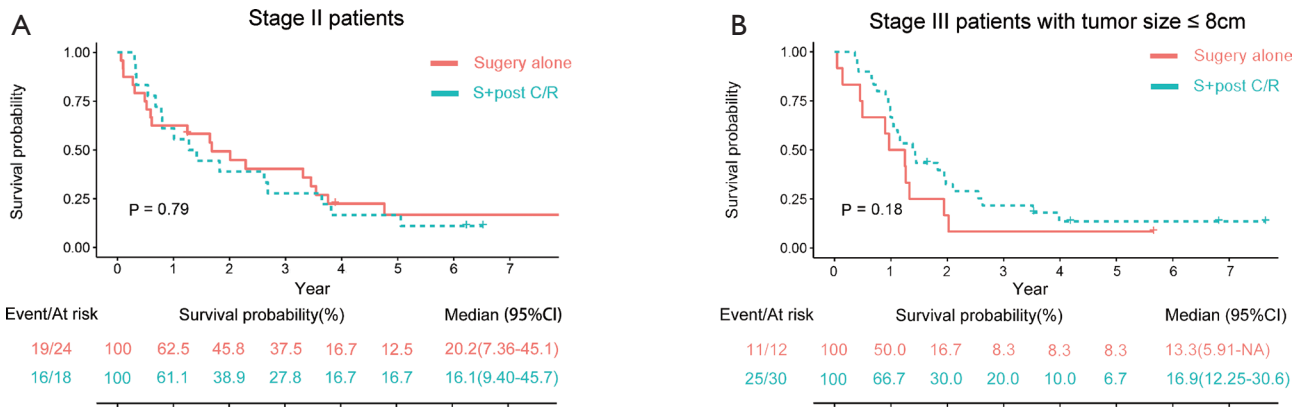


Figure S1 Survival curves according to treatment strategies. (A) OS of stage II patients; (B) OS of stage III patients whose tumor size is equal to or less than 8 cm. OS, overall survival; S + post C/R, surgery with postoperative chemotherapy and/or radiotherapy.

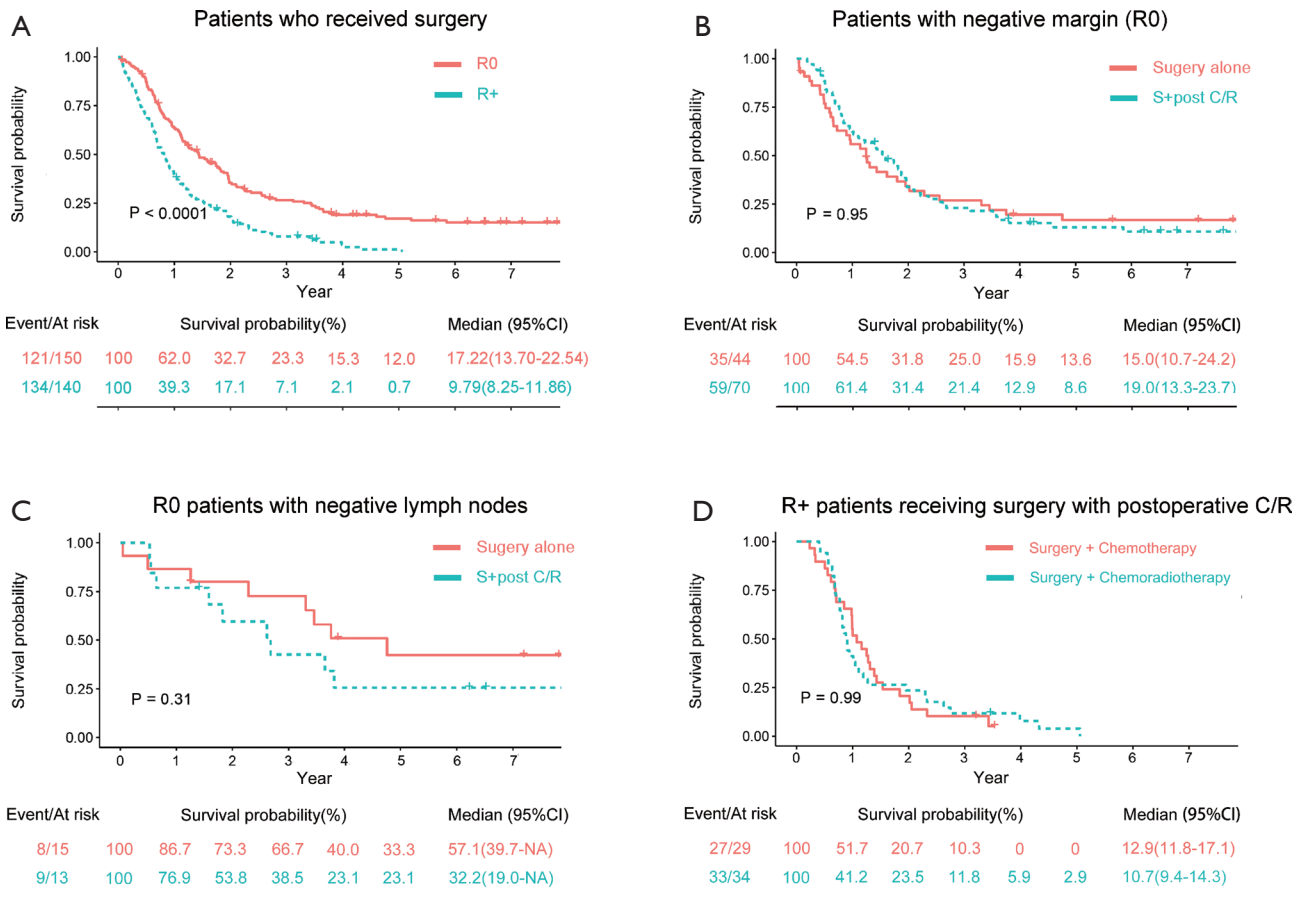


Figure S2 Survival curves for different subgroups. (A) OS of patients with negative margins (R0) versus positive margins (R+); (B) OS of R0 patients according to treatment strategies; (C) OS of R0 patients with negative lymph nodes according to treatment strategies; (D) overall survival of R+ patients who received surgery with postoperative C/R according to treatment strategies. OS, overall survival; S + post C/R, surgery with postoperative chemotherapy and/or radiotherapy.