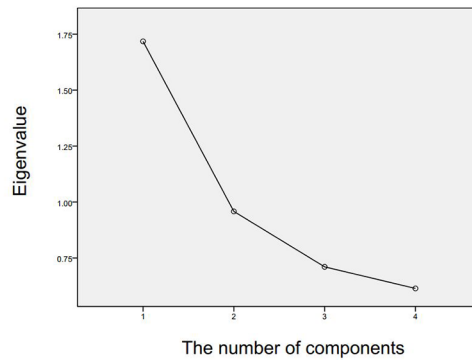


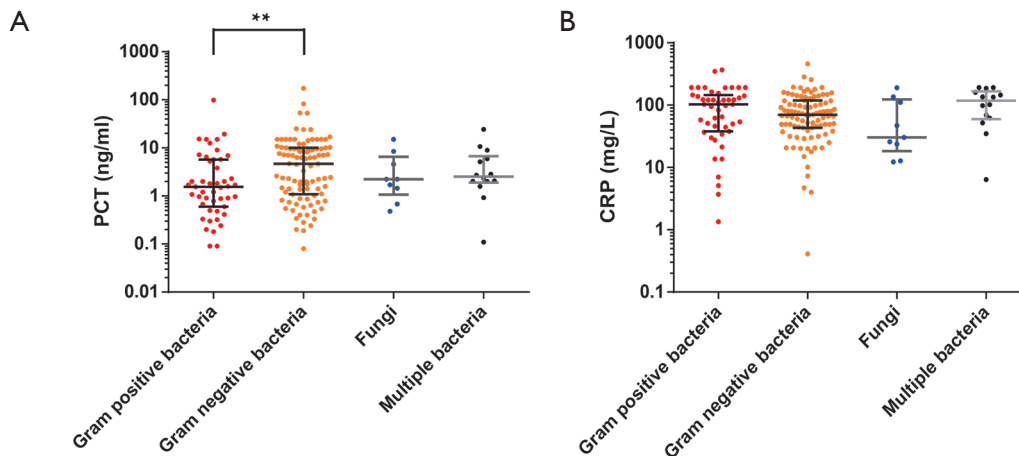
**Table S1** Scoring system for infection biomarkers

Scores	PCT (ng/mL)	CRP (mg/dL)	WBC ( $10^9/L$ )	N%
0	0–0.25	0–10.00	4.01–10.00	50.01–70.00
1	0.25–0.50	10.00–50.00	10.01–20.00 or 2.01–4.00	70.01–80.00 or 40.01–50.00
2	0.50–2.00	50.00–100.00	20.01–30.00 or 1.01–2.00	80.10–90.00 or 30.01–40.00
3	2.00–5.00	100.00–160.00	30.01–40.00 or 0.51–1.00	90.01–95.00 or 20.01–30.00
4	5.00–10.00	>160.00	>40.01 or <0.50	>95.00 or <20.00
5	>10.00	–	–	–

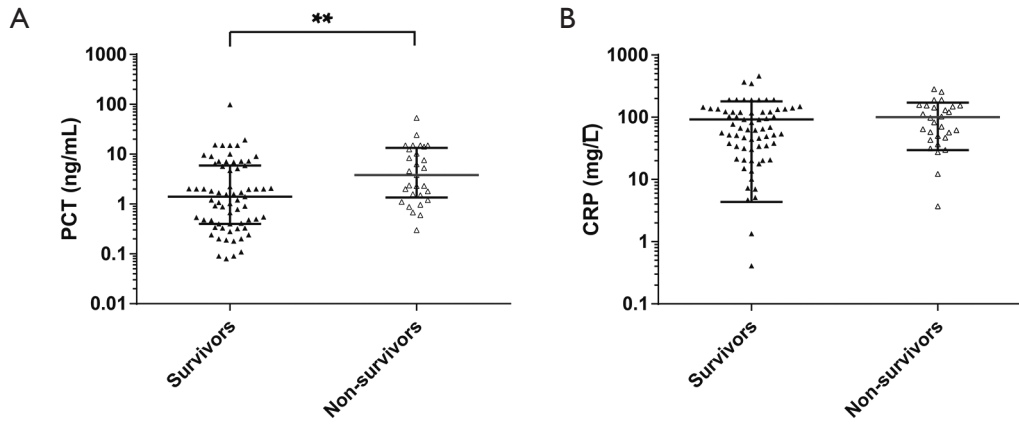
PCT, procalcitonin; CRP, C-reactive protein; WBC, white blood cells; N%, neutrophil percentages.



**Figure S1** The scree plot for the eigenvalues of components. The coordinates in horizontal axis represents order of the components. The coordinates in vertical axis represents eigenvalue for each component. Only the components with an eigenvalue larger than 0.9 are retained in subsequent analysis.



**Figure S2** Serum PCT and CRP levels in patients with positive blood cultures according to different types of microorganisms. Each ● represents an episode of positive blood culture identified as Gram-positive bacteria. Each ● represents an episode of positive blood culture identified as Gram-negative bacteria. Each ● represents an episode of positive blood culture identified as fungi. Each ● represents an episode of positive blood culture identified as multiple bacteria. PCT, procalcitonin; CRP, C-reactive protein.



**Figure S3** Serum PCT and CRP levels in survivors and non-survivors with positive blood cultures. The blood samples for detecting PCT and CRP were drawn at the same time with the sampling of the last episode of positive blood culture. Each ▲ represents a survivor and each △ represents a non-survivor. \*\*,  $P < 0.01$ . PCT, procalcitonin; CRP, C-reactive protein.