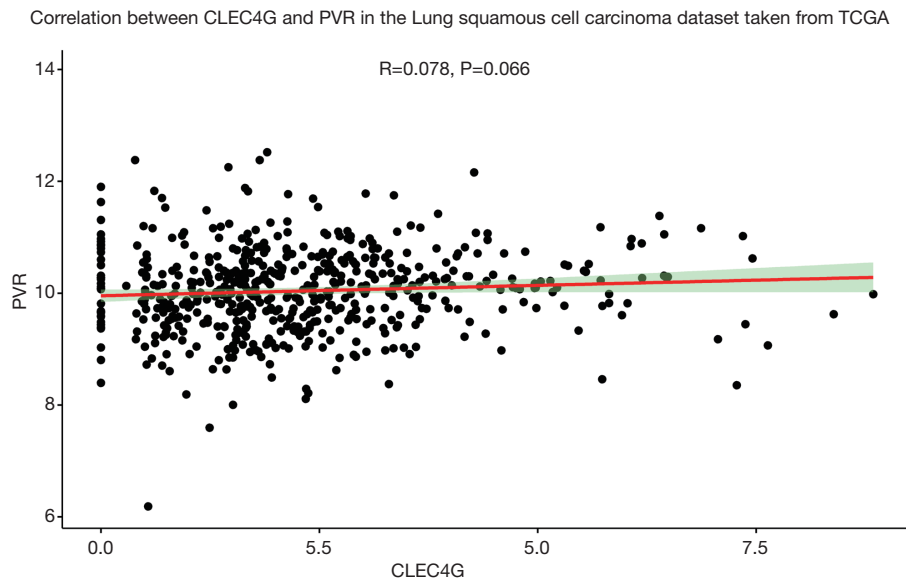
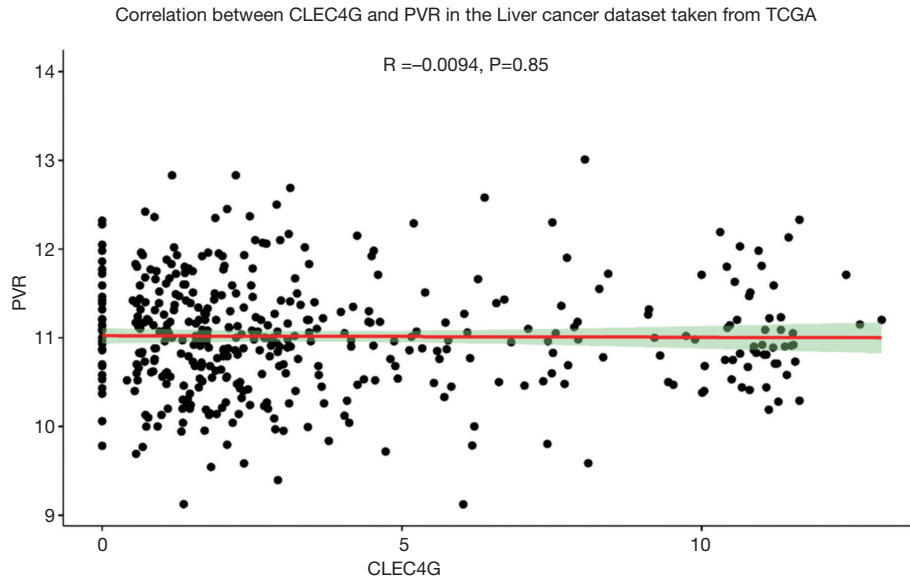


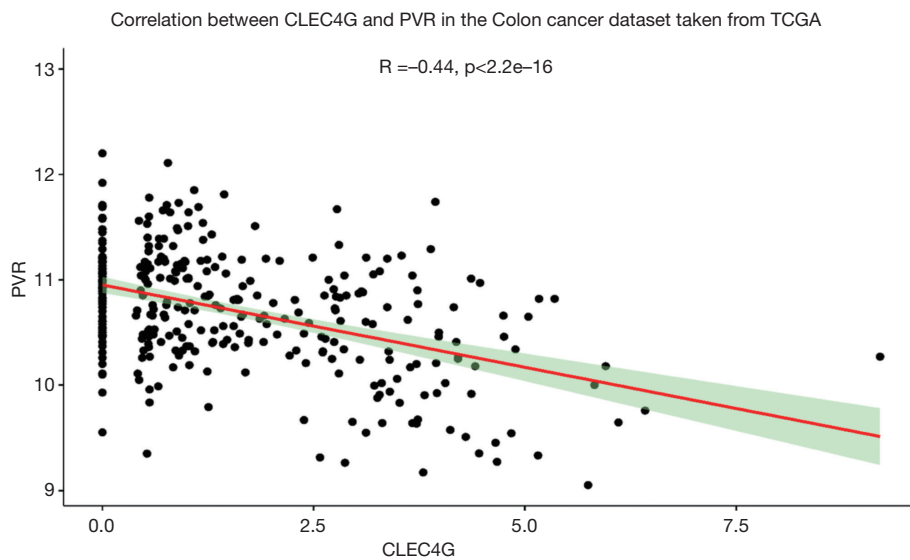
**Figure S1** Correlation between expression of LSECtin and PVR in lung adenocarcinoma. LSECtin, liver and lymph node sinusoidal endothelial cell C-type lectin; PVR, poliovirus receptor; CLEC4G, C-type lectin domain family 4 member G.



**Figure S2** Correlation between expression of LSECtin and PVR in lung squamous cell carcinoma. LSECtin, liver and lymph node sinusoidal endothelial cell C-type lectin; PVR, poliovirus receptor; CLEC4G, C-type lectin domain family 4 member G.



**Figure S3** Correlation between expression of LSECTin and PVR in liver cancer. LSECTin, liver and lymph node sinusoidal endothelial cell C-type lectin; PVR, poliovirus receptor; CLEC4G, C-type lectin domain family 4 member G.



**Figure S4** Correlation between expression of LSECTin and PVR in colon cancer. LSECTin, liver and lymph node sinusoidal endothelial cell C-type lectin; PVR, poliovirus receptor; CLEC4G, C-type lectin domain family 4 member G.

**Table S1** Association of LSECTin and PVR expression in NSCLC Patients in different pathological pattern

	Pathological pattern			
	LUAD		LUSC	
	LSECTin positive	LSECTin negative	LSECTin positive	LSECTin negative
PVR positive	30	7	8	7
PVR negative	8	5	6	27
$\chi^2$	2.014		6.168	
P value	0.156		0.013	

LSECTin, liver and lymph node sinusoidal endothelial cell C-type lectin; PVR, poliovirus receptor; LUAD, lung adenocarcinoma; LUSC, lung squamous cell carcinoma; NSCLC, non-small cell lung cancer.