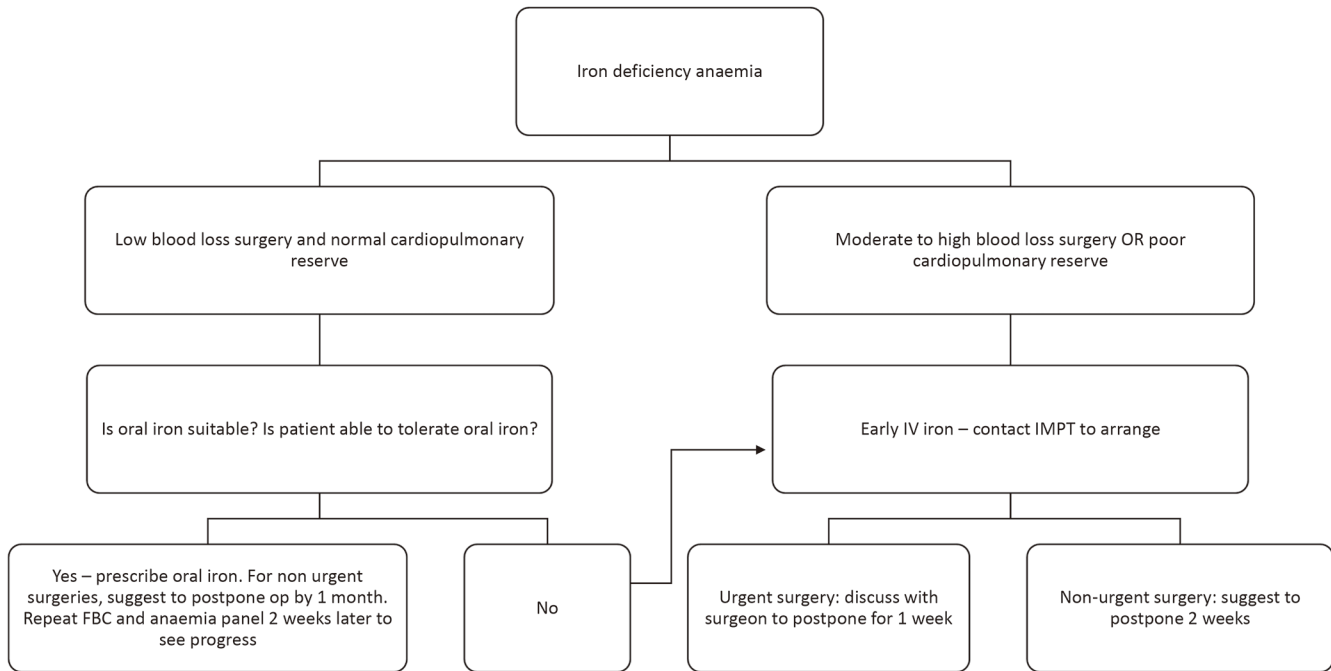


**Figure S1** Triage of anemic patients in the Singapore General Hospital Preoperative Evaluation Clinic. DIM, Department of Internal Medicine; CRP, C-reactive protein; FBC, full blood count. Adapted from the Guidelines on Anemia, v.5.0, issued on 2/9/20, by Perioperative Services, Singapore General Hospital.



**Figure S2** Treatment of patients with preoperative iron-deficiency anaemia in the Singapore General Hospital Preoperative Evaluation Clinic. FBC, Full blood count; IMPT, Internal Medicine Perioperative Team. Adapted from the Guidelines on Anemia, v.5.0, issued on 2/9/20, by Perioperative Services, Singapore General Hospital.