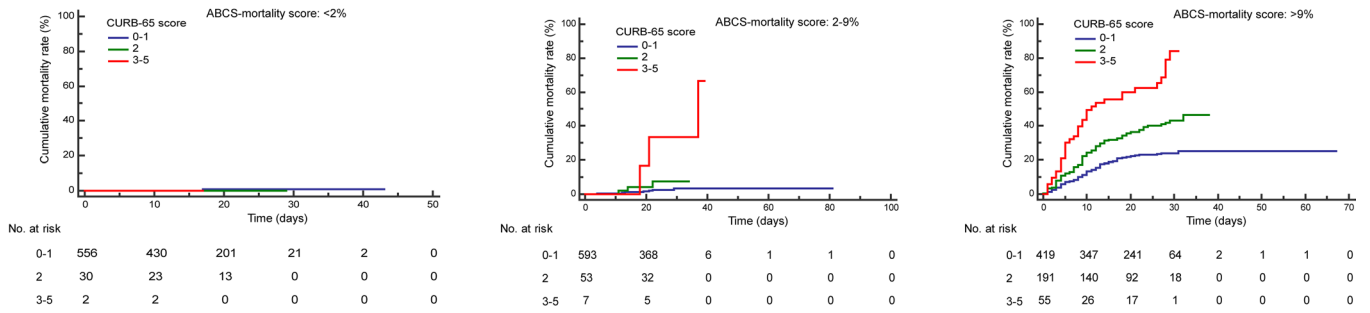
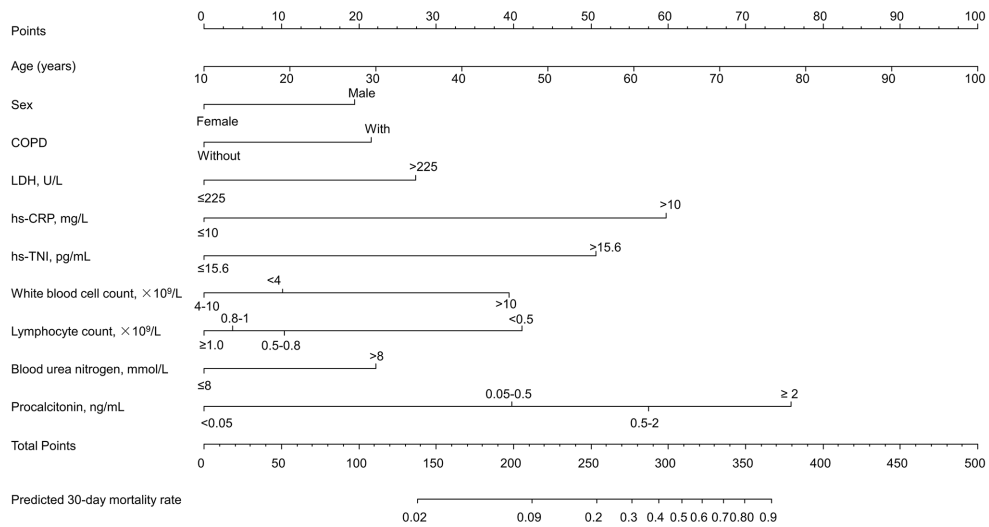


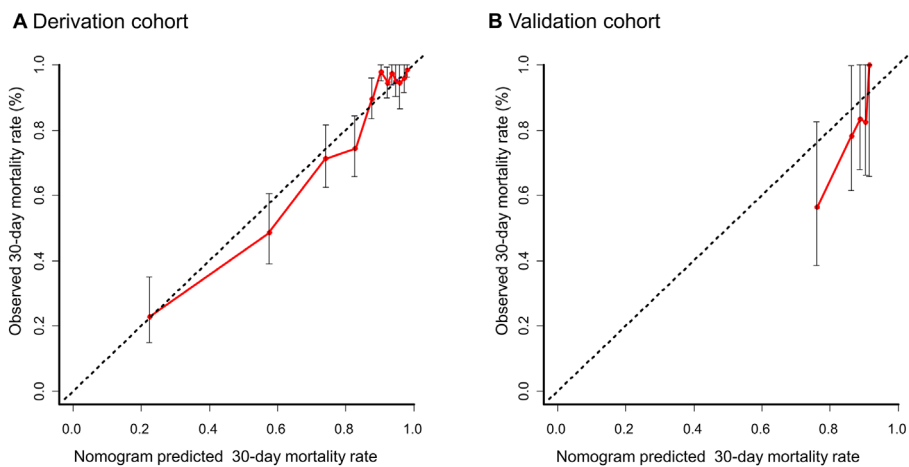
Supplementary



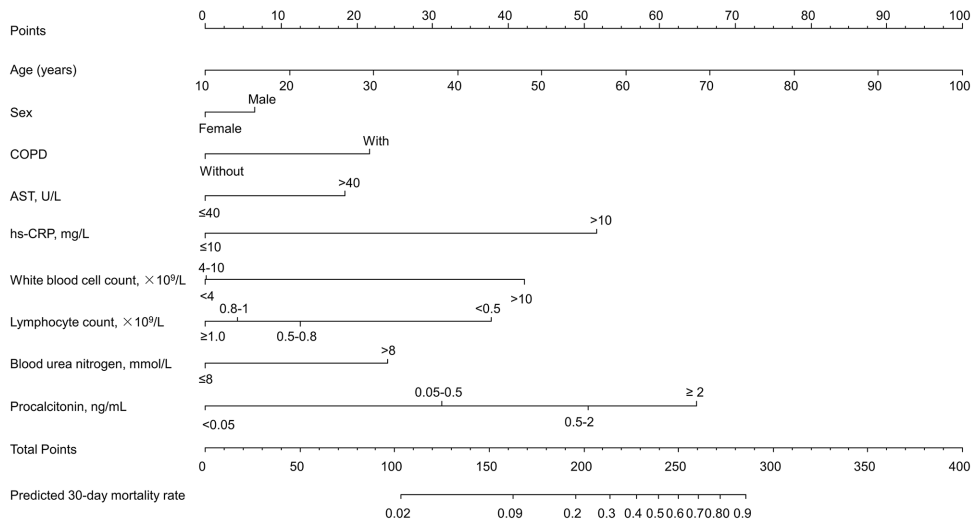
**Figure S1** Kaplan-Meier estimated cumulative event rate by the three CURB-65 risk classes (0–1 point, 2 points, 3–5 points) for the ABCS-mortality risk groups (low, intermediate, and high).



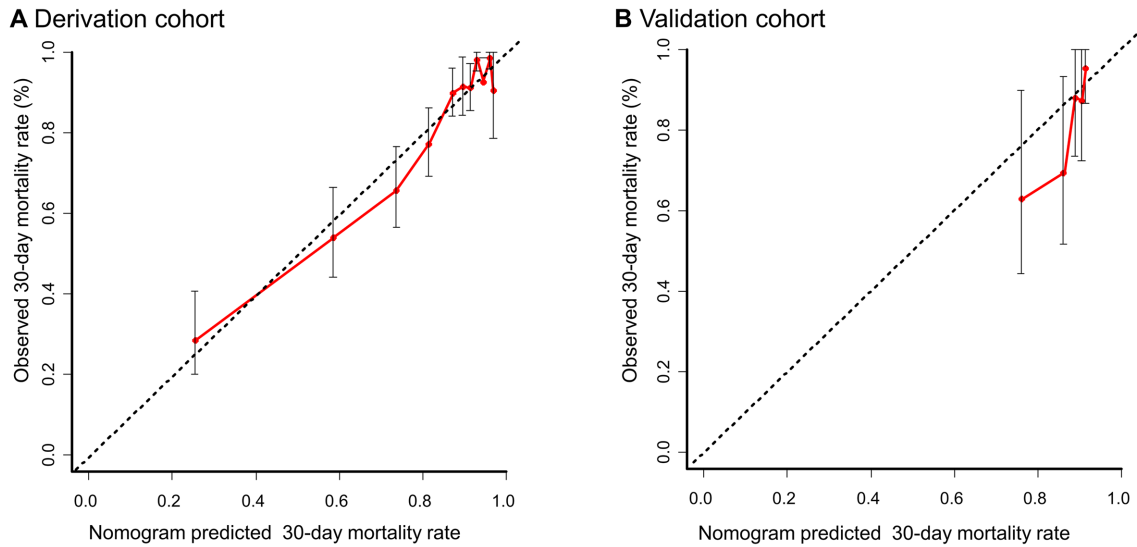
**Figure S2** The ABCS-mortality score using LDH instead of AST. COPD, chronic obstructive pulmonary disease; LDH, lactate dehydrogenase; AST, aspartate aminotransferase; hs-CRP, high sensitivity C-reactive protein; hs-TnI, high-sensitivity troponin I.



**Figure S3** Calibration plots for the ABCS-mortality score using LDH instead of AST in the derivation (A) and external validating cohort (B). LDH, lactate dehydrogenase; AST, aspartate aminotransferase.



**Figure S4** The ABCS-mortality score without hs-TnI. COPD, chronic obstructive pulmonary disease; AST, aspartate aminotransferase; hs-CRP, high sensitivity C-reactive protein; hs-TnI, high-sensitivity troponin I.



**Figure S5** Calibration plots for the ABCS-mortality score without hs-TnI in the derivation (A) and external validating cohort (B). hs-TnI, high-sensitivity troponin I.

**Table S1** Point assignment and prognostic score for ABCS-mortality score using LDH instead of AST

Variables	Points	Probability of 30-day mortality
Age (years)		
10	0	
20	11	
30	22	
40	33	
50	44	
60	56	
70	67	
80	78	
90	89	
100	100	
hs-CRP, mg/L		
≤10.0	0	
>10.0	60	
White blood cell count, 10 <sup>9</sup> /L		
4–10	0	
<4	10	
>10	39	
Blood urea nitrogen, mmol/L		
≤8	0	
>8	22	
Sex		
Female	0	
Male	19	
COPD		
No	0	
Yes	22	
LDH, U/L		
≤225	0	
>225	27	
hs-TnI, pg/mL		
≤15.6	0	
>15.6	51	

**Table S1** (continued)

**Table S1** (continued)

Variables	Points	Probability of 30-day mortality
Lymphocyte count, 10 <sup>9</sup> /L		
≥1.0	0	
≥0.8 to <1.0	4	
≥0.5 to <0.8	10	
<0.5	41	
Procalcitonin, ng/mL		
<0.05	0	
≥0.05 to <0.5	40	
≥0.5 to <2	57	
≥2	76	
Total points		
138		0.02
212		0.09
254		0.20
277		0.30
294		0.40
309		0.50
322		0.60
335		0.70
349		0.80
367		0.90

LDH, lactate dehydrogenase; AST, aspartate aminotransferase; COPD, chronic obstructive pulmonary disease; hs-CRP, hypersensitive C-reactive protein; hs-TnI, high-sensitivity troponin I.

**Table S2** Point assignment and prognostic score for ABCS-mortality score without hs-TnI

Variables	Points	Probability of 30-day mortality
Age (years)		
10	0	
20	11	
30	22	
40	33	
50	44	
60	56	
70	67	
80	78	
90	89	
100	100	
hs-CRP, mg/L		
≤10.0	0	
>10.0	52	
White blood cell count, 10 <sup>9</sup> /L		
4–10	0	
<4	0	
>10	42	
Blood urea nitrogen, mmol/L		
≤8	0	
>8	24	
Sex		
Female	0	
Male	6	
COPD		
No	0	
Yes	22	
AST, U/L		
≤40	0	
>40	18	
Lymphocyte count, 10 <sup>9</sup> /L		
≥1.0	0	
≥0.8 to <1.0	4	

**Table S2** (continued)

**Table S2** (continued)

Variables	Points	Probability of 30-day mortality
≥0.5 to <0.8	12	
<0.5	38	
Procalcitonin, ng/mL		
<0.05	0	
≥0.05 to <0.5	31	
≥0.5 to <2	51	
≥2	65	
Total points		
103		0.02
163		0.09
196		0.20
214		0.30
228		0.40
239		0.50
250		0.60
264		0.70
272		0.80
286		0.90

hs-TnI, high-sensitivity troponin I; COPD, chronic obstructive pulmonary disease; AST, aspartate aminotransferase; hs-CRP, hypersensitive C-reactive protein.