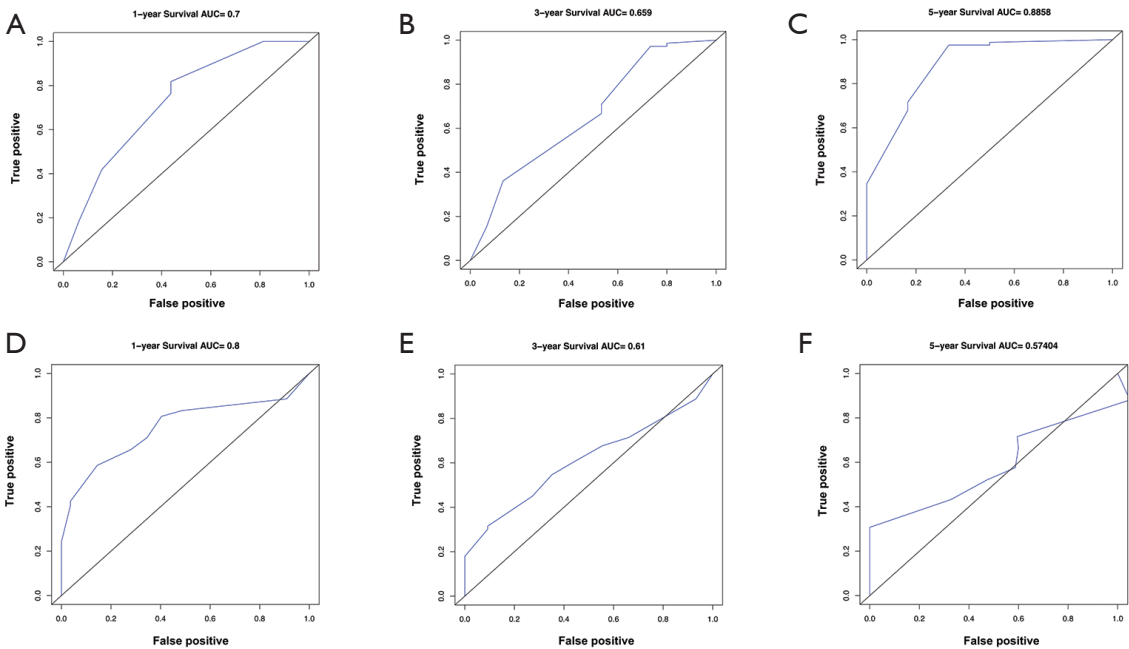
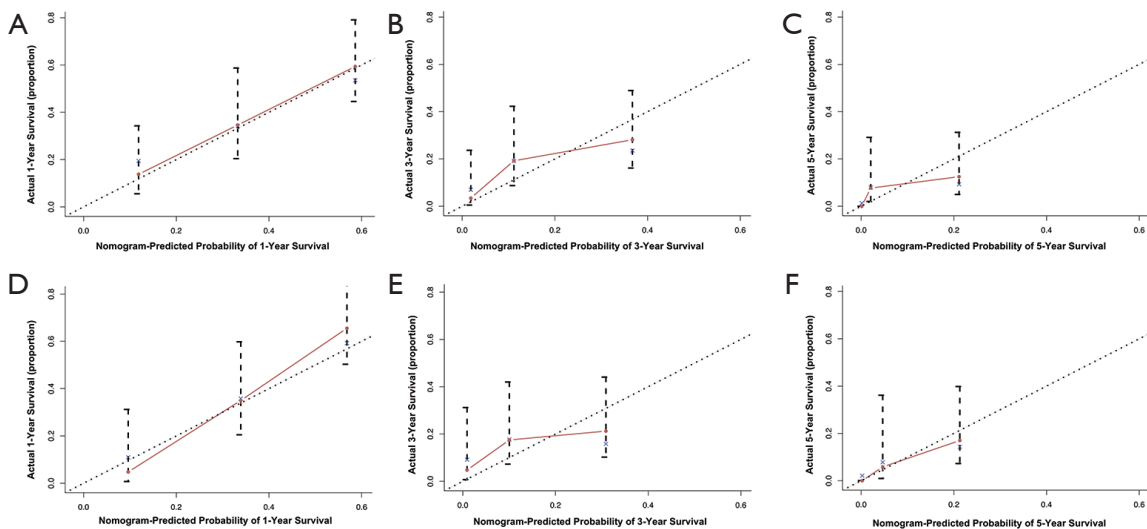


**Figure S1** Nomograms for predicting 1-, 3-, and 5-year OS of POSRCC patients from 1990 to 2002 (A) and from 2003 to 2016 (B). OS, overall survival; POSRCC, primary ovarian signet-ring cell carcinoma.



**Figure S2** ROC curve analyses with estimated AUCs for 1-, 3-, and 5-year OS of POSRCC patients from 1990 to 2002 (A,B,C) and from 2003 to 2016 (D,E,F). ROC, receiver operating characteristic; AUC, area under the curve; OS, overall survival; POSRCC, primary ovarian signet-ring cell carcinoma.



**Figure S3** Calibration curves for predicting the OS of POSRCC patients at 1, 3, and 5 years from 1990 to 2002 (A,B,C) and from 2003 to 2016 (D,E,F). OS, overall survival; POSRCC, primary ovarian signet-ring cell carcinoma.