

Figure S1 Kaplan-Meier survival analysis (24 months follow-up) on germline and tumor *BRCA1/2* mutations in HGSOC. (A) Progression-free survival (PFS) with and without germline mutation. (B) PFS with and without tumor mutation. (C) Overall survival (OS) with and without germline mutation. (D) OS with and without tumor mutation.

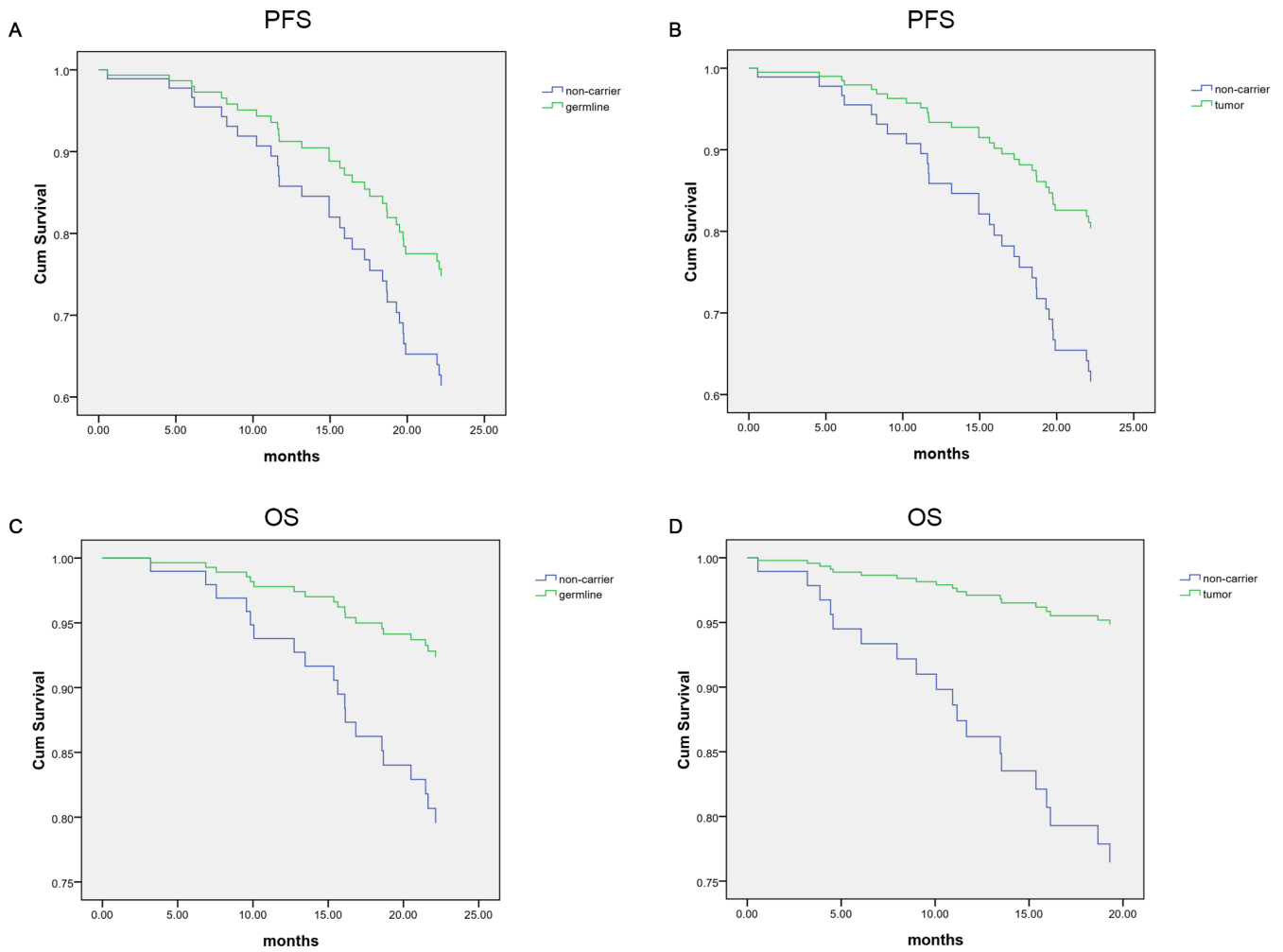


Figure S2 Cox regression analysis (24 months follow-up) on germline and tumor *BRCA1/2* mutations in HGSOEC. (A) Progression-free survival (PFS) with and without germline mutation. (B) PFS with and without tumor mutation. (C) Overall survival (OS) with and without germline mutation. (D) OS with and without tumor mutation.