

FIGURE 1D

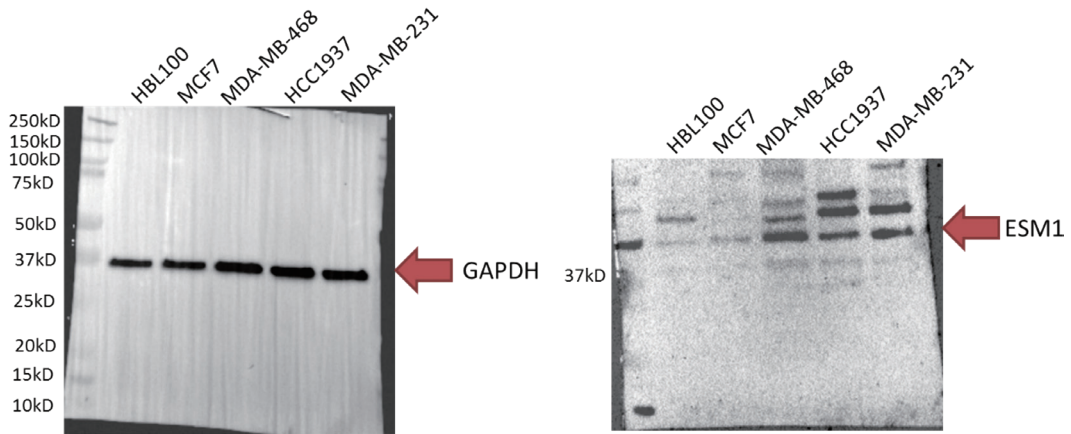


FIGURE 5A

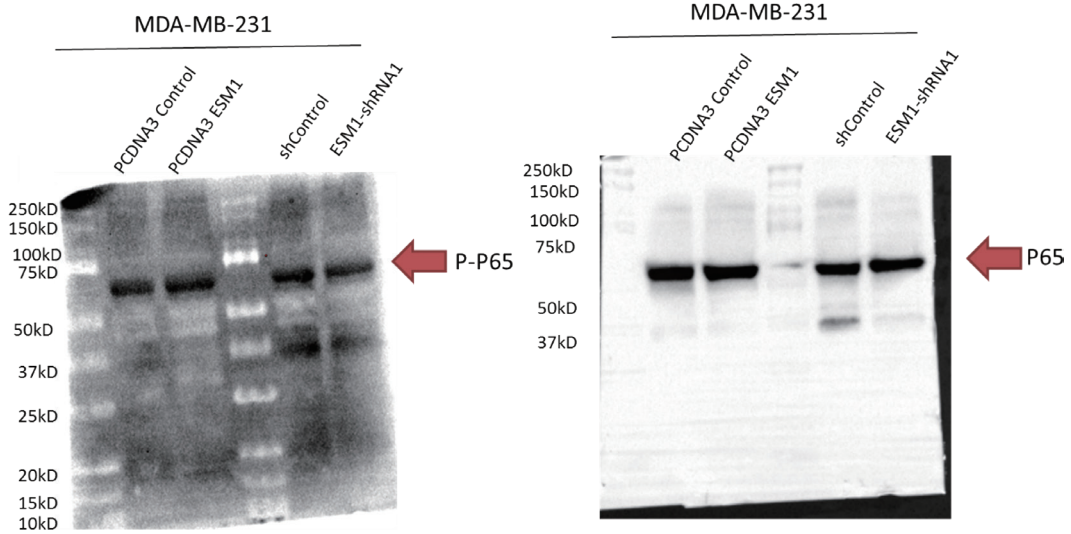


FIGURE 5A

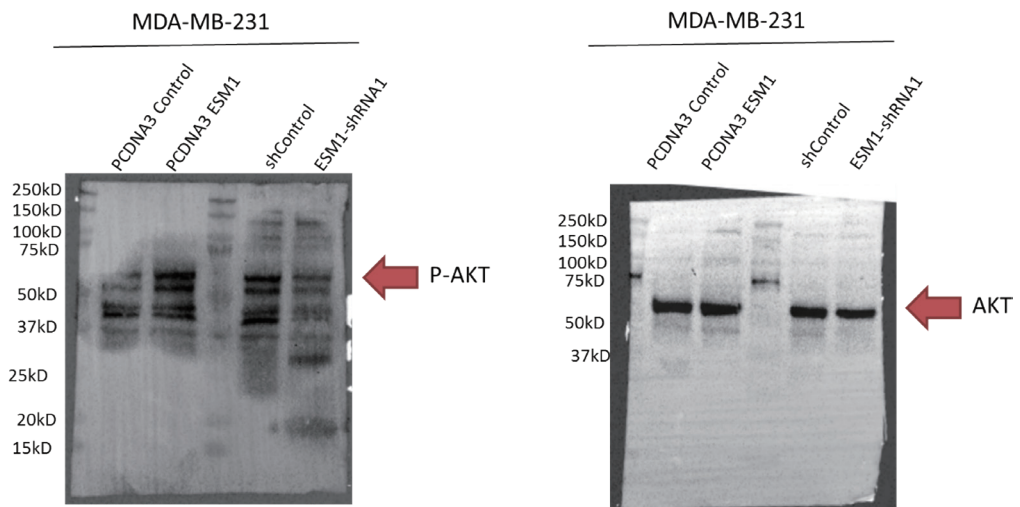


FIGURE 5A

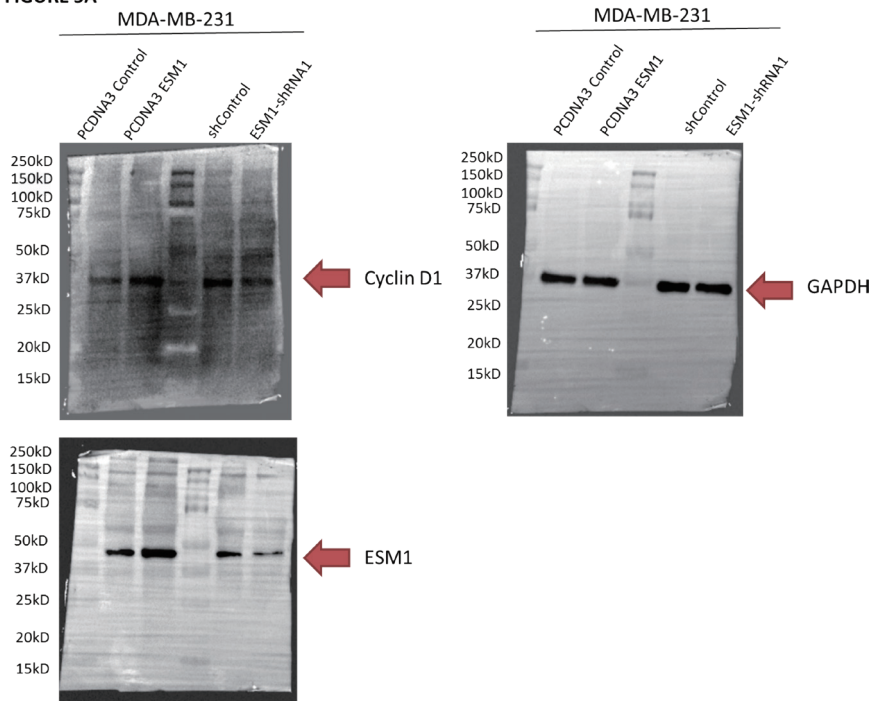


FIGURE 5B

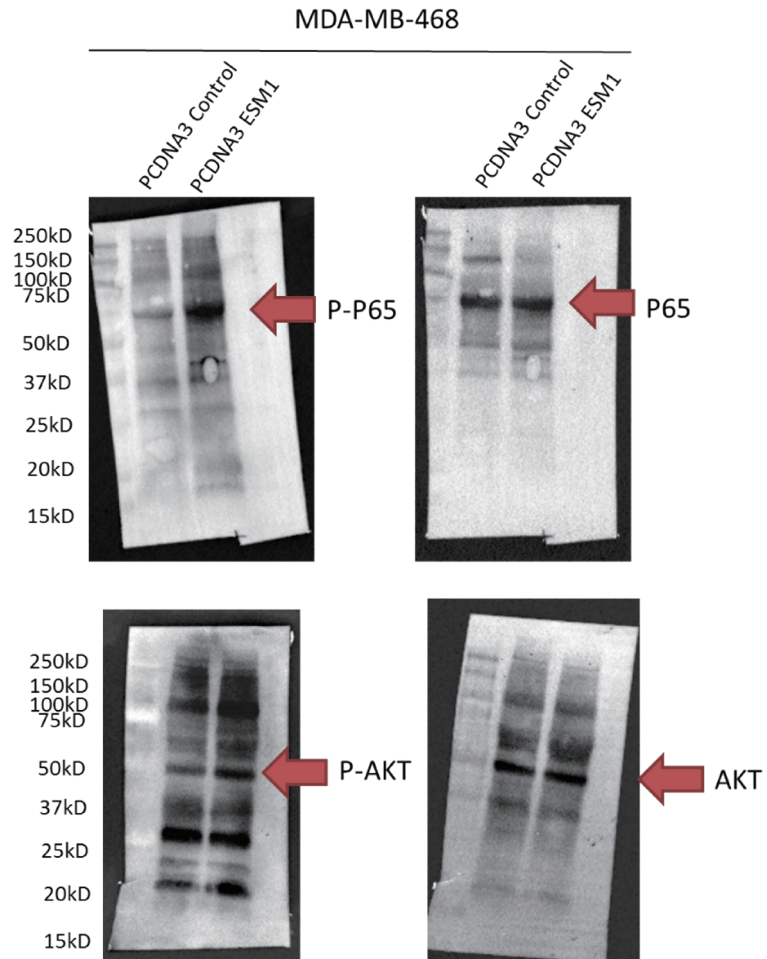


FIGURE 5B

MDA-MB-468

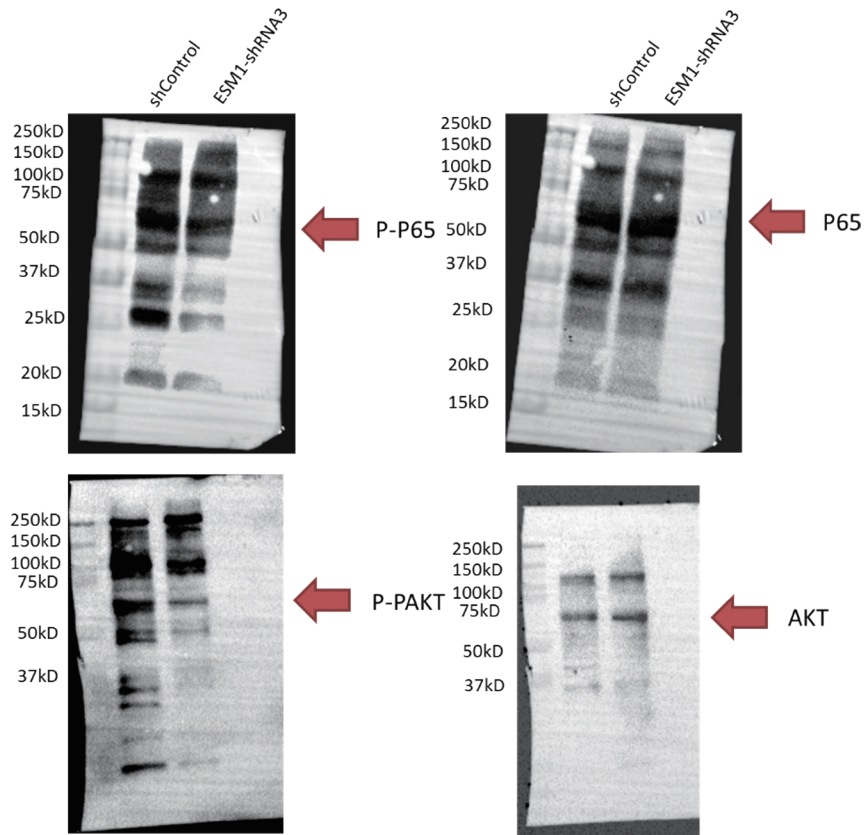


FIGURE 5B

MDA-MB-468

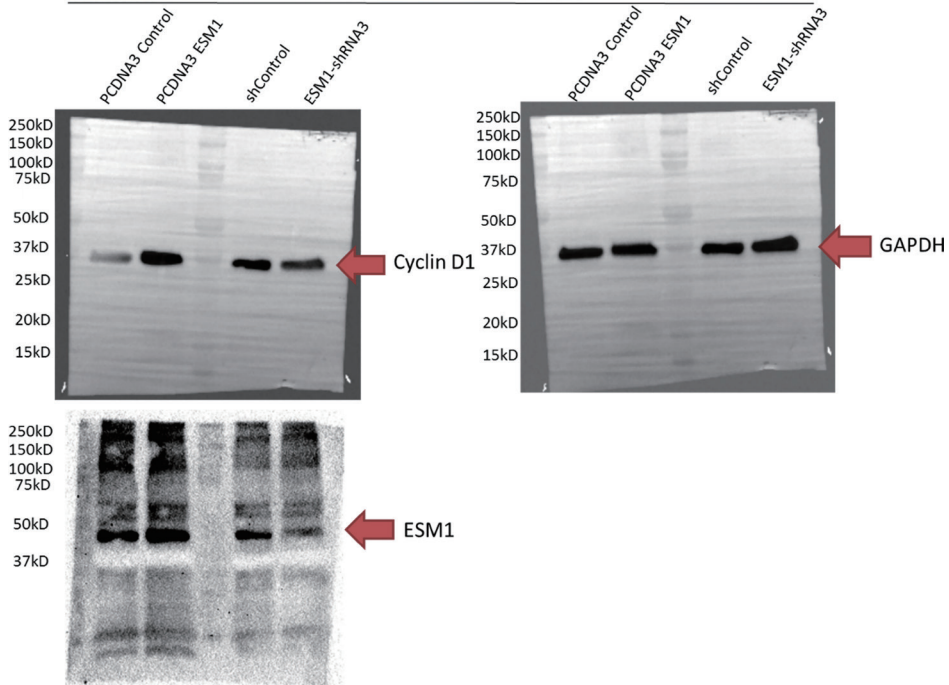


FIGURE 6E

MDA-MB-231 PCDNA3-ESM1

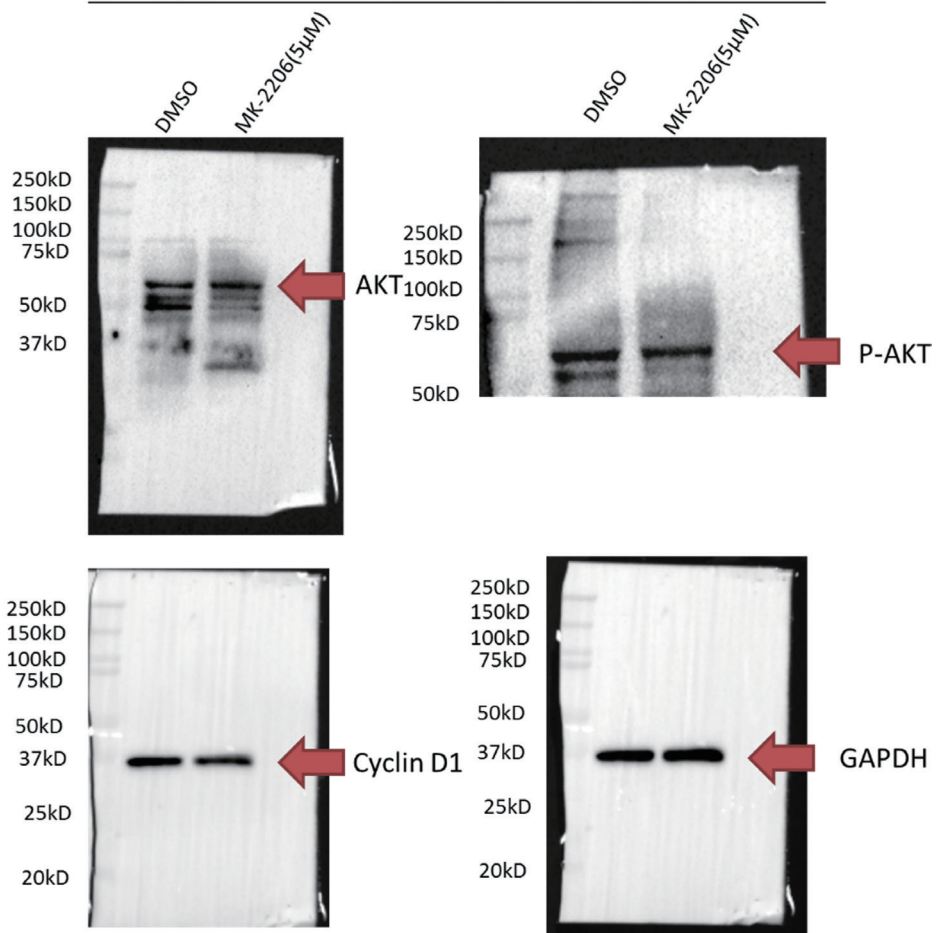


FIGURE 6E

MDA-MB-468 PCDNA3-ESM1

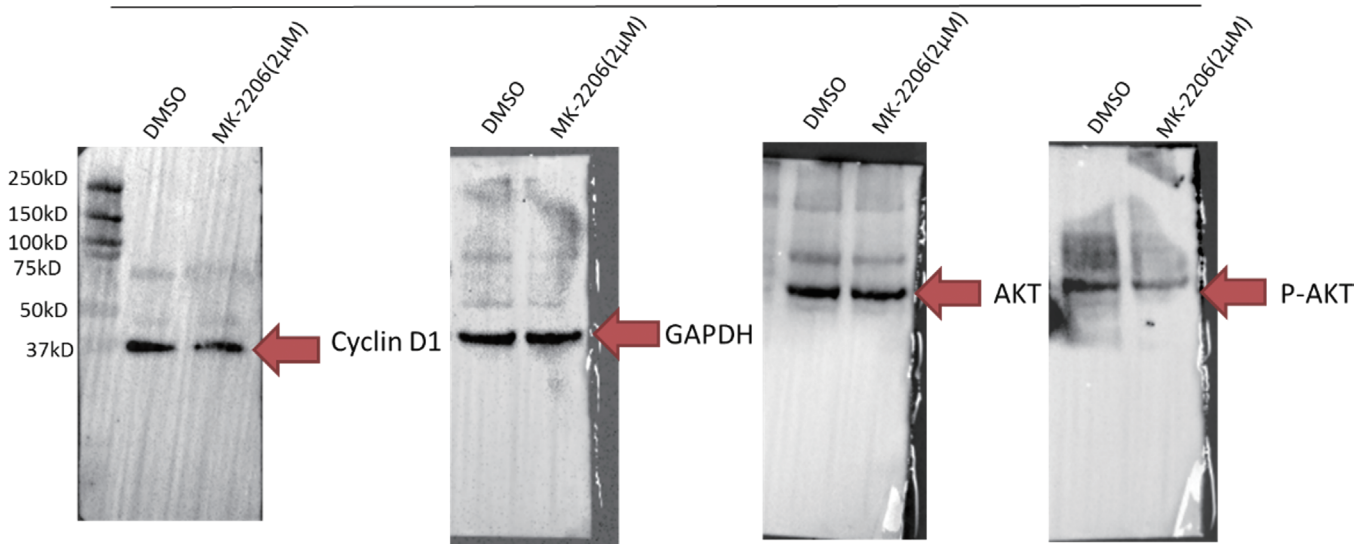


FIGURE 6F

MDA-MB-231 PCDNA3-ESM1

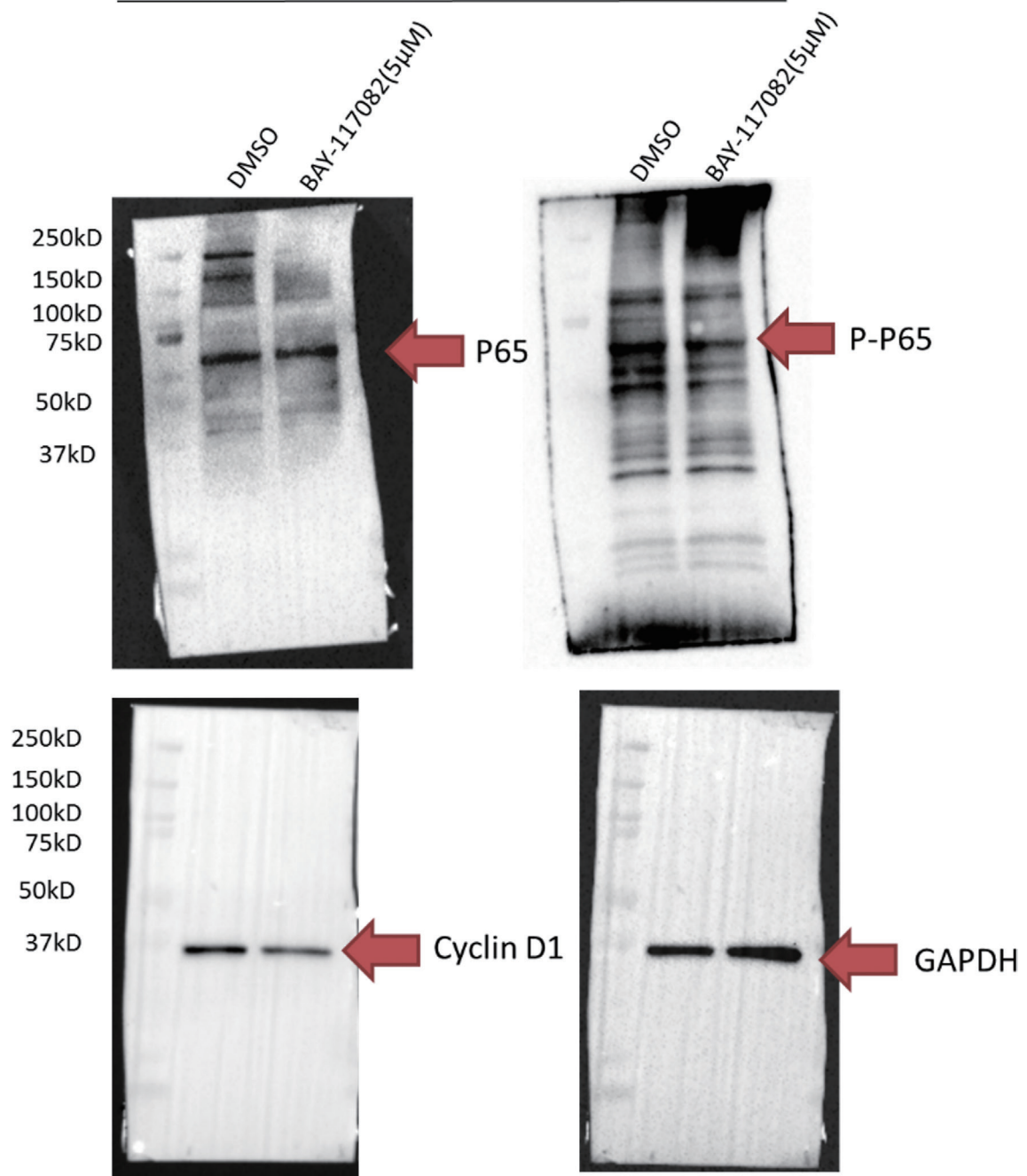


FIGURE 6F

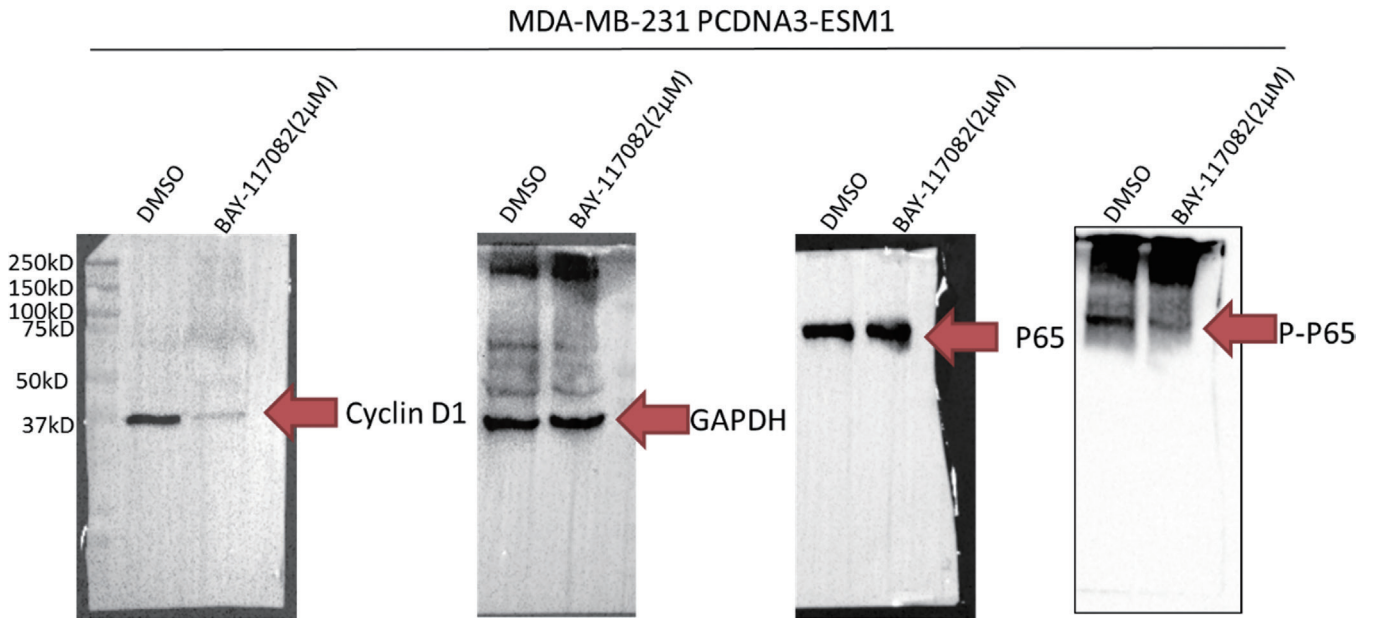


Figure S1 Original blots of the Western blot shown *Figures 1,2* and *Figures 5,6*.

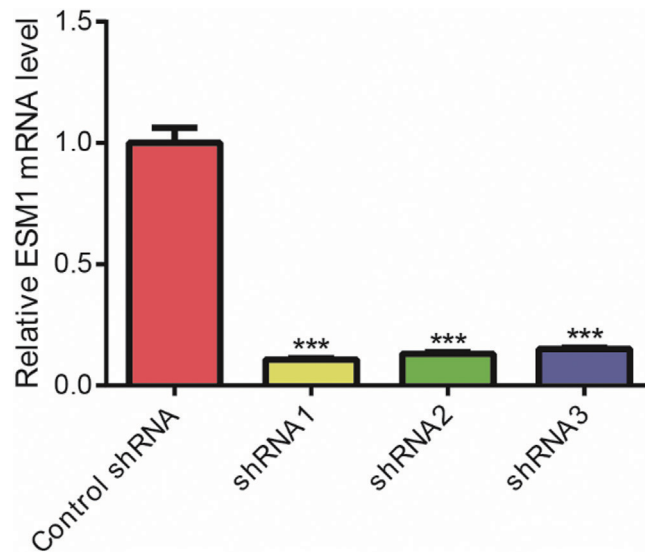


Figure S2 *ESM1* mRNA expression in MDA-MB-231 cells was efficiently knocked down by all three shRNAs.

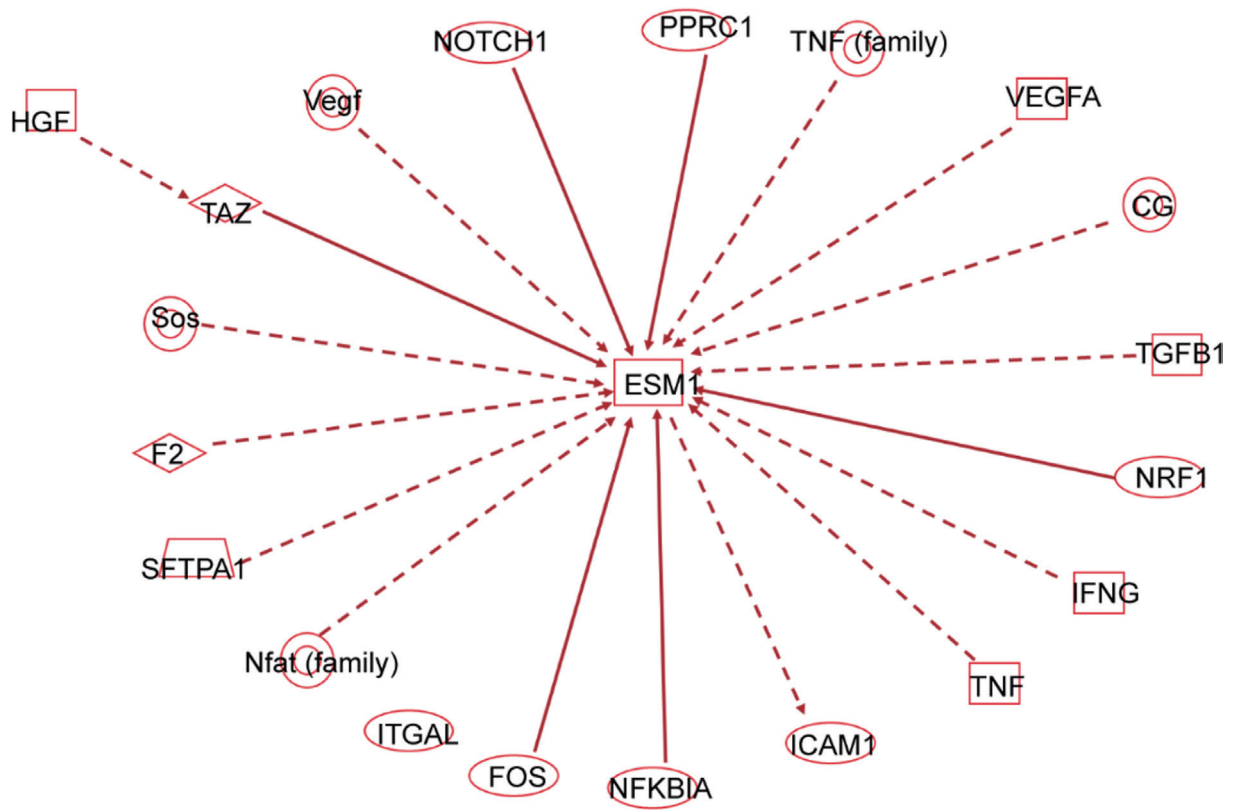


Figure S3 Bioinformatic analysis predicts the regulation network of ESM1. Regulation network of ESM1 was constructed using QIAGEN's Ingenuity® Pathway Analysis tools.