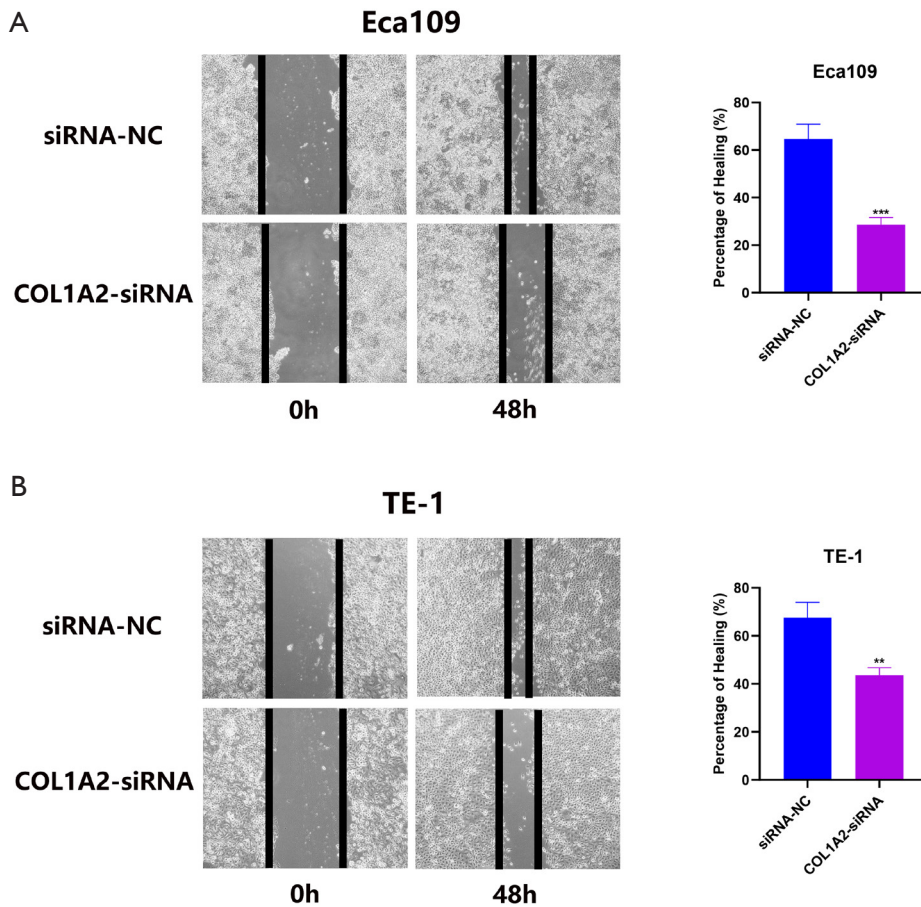


**Figure S1** The protein levels of *COL1A2* in Eca109, and TE-1 cells after *COL1A2*-siRNA were examined through Western blot analysis. GAPDH was the housekeeping gene used for normalization.



**Figure S2** The ability of wound-healing in Eca109 (A) and TE-1 (B) cell lines after *COL1A2*-siRNA and NC-siRNA infection. Five different fields of view were chosen randomly, and images were acquired at 100×magnification.