

Figure S1 Correlation between total RNA input and the internal control Ct values obtained by qPCR. The blue line highlights the trendline with the 95% confidence interval presented in the shaded area. Pearson correlation has been used to calculate the correlation between the values.

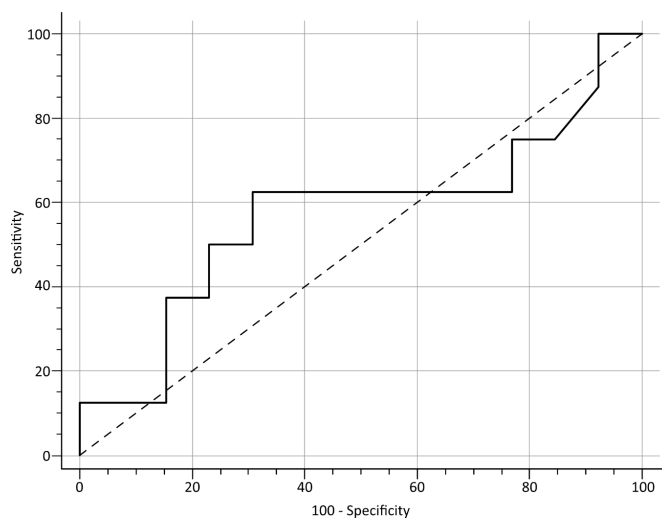


Figure S2 ROC curve for the association of the ratio of *ALK* rearranged positive cells in the FISH analysis on tissue sections and positive outcome in the qPCR test in the baseline patients with known *ALK* rearrangements. ROC, receiver operator characteristics; *ALK*, anaplastic lymphoma kinase; FISH, fluorescence in-situ hybridization.

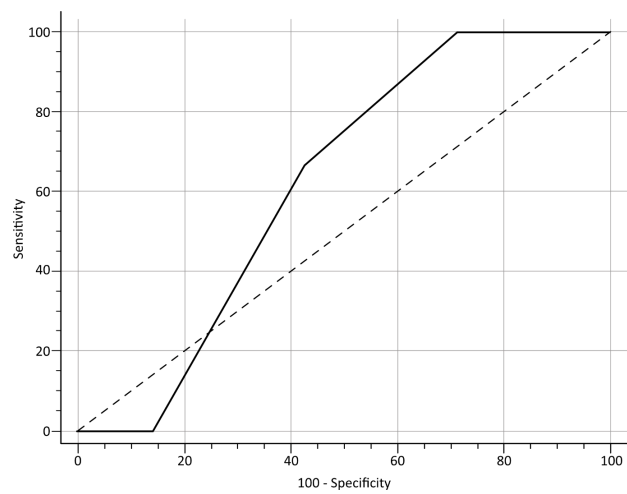


Figure S3 ROC curve for the association of the primary tumor size and positive outcome in the qPCR test in the baseline patients with known *ALK* rearrangements. ROC, receiver operator characteristics; *ALK*, anaplastic lymphoma kinase.