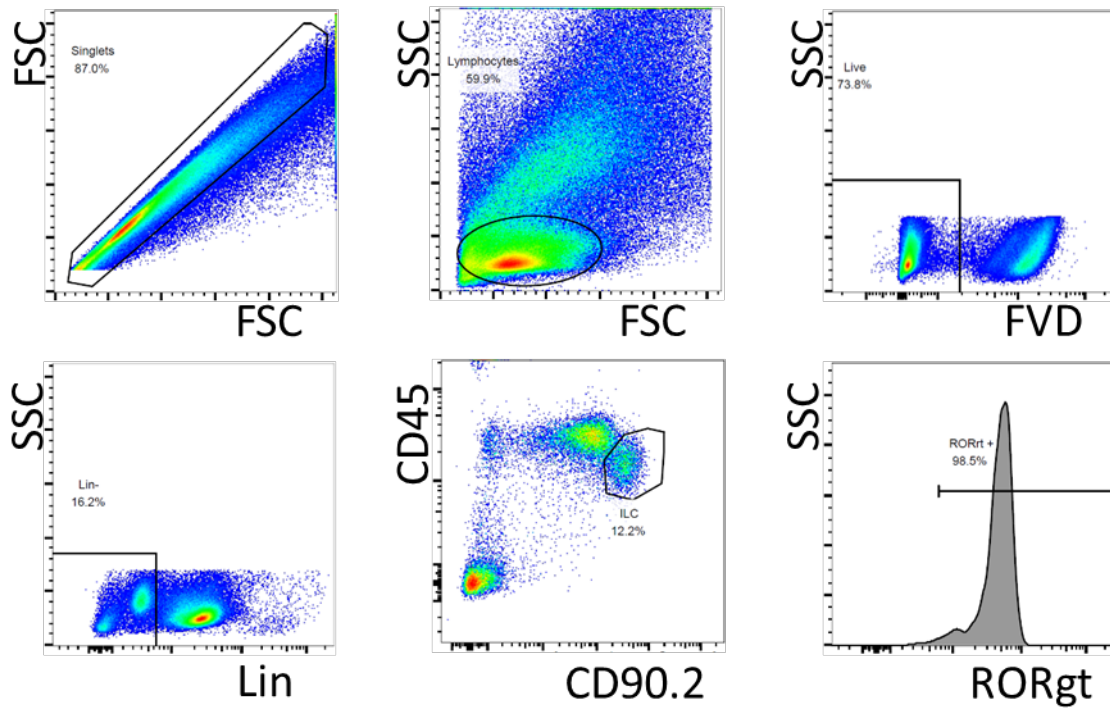
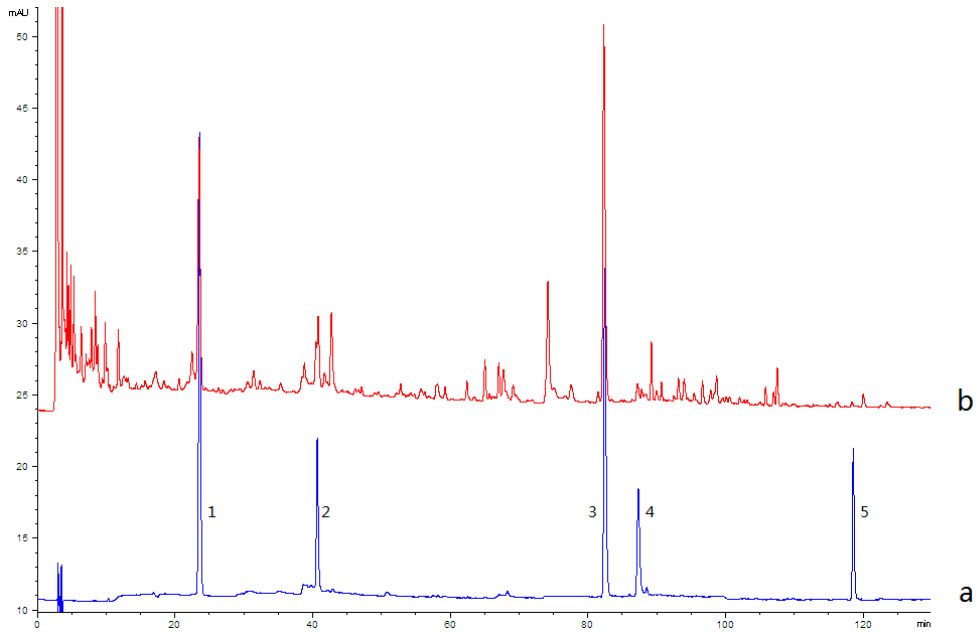


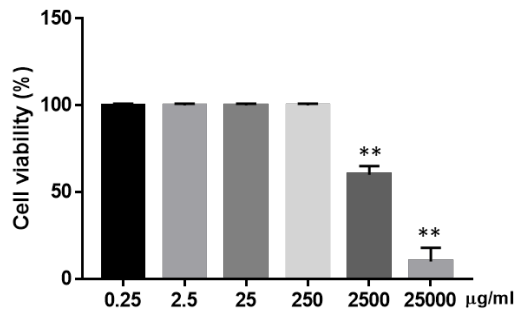
**Figure S1** The experimental protocol for the establishment of the mouse model of obese asthma and intervention with Linggan Wuwei Jiangxin (LGWWJX).



**Figure S2** Innate lymphoid cell 3 (ILC3) were prepared by isolation of intestinal lamina propria lymphocytes dissected from *Rag*<sup>-/-</sup> mice and then sorted as Lin<sup>-</sup> CD45<sup>low</sup> CD90.2<sup>high</sup> cells and identified by nuclear RORγt staining.



**Figure S3** High performance liquid chromatography (HPLC) chromatograms of Linggan Wuwei Jiangxin (LGWWJX). Representative chromatograms of standard reference compounds (a) and LGWWJX (b) are shown. The numbers from 1 to 5 in (a) represent liquiritin, isoliquiritin, glycyrrhizinic acid, schizandrin, and deoxyschizandrin, respectively.



**Figure S4** The concentration-dependent effects of Linggan Wuwei Jiangxin (LGWWJX) on the viability of innate lymphoid cell 3 (ILC3) cells in vitro. The values are presented as mean  $\pm$  SEM (n=4 per group). \*\*P<0.01 compared with the cell viability.