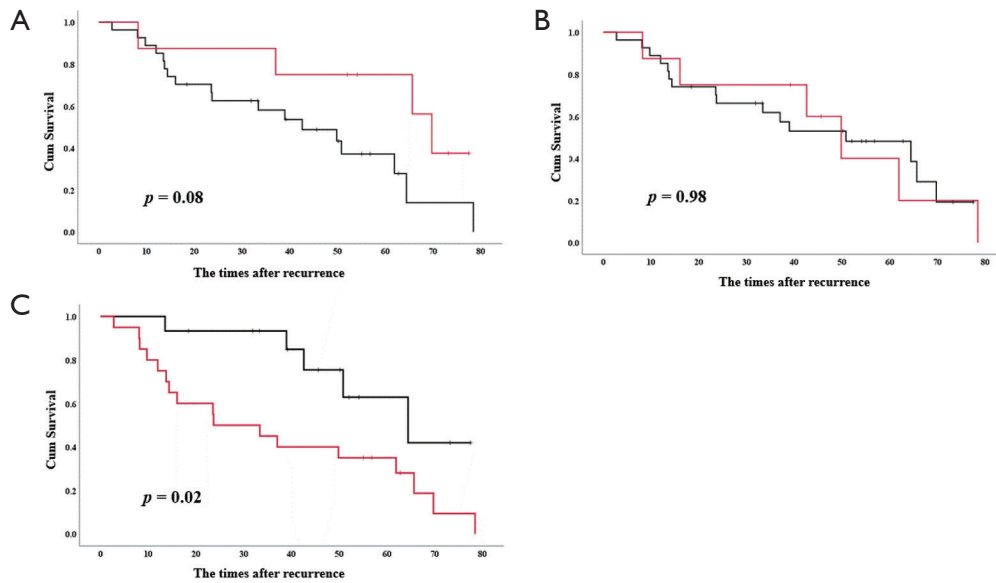


**Figure S1** The proportion of the efficacious evaluation of immune checkpoint inhibitors Gray: Progressive Disease; Lattice: Stable Disease; and Black: Partial Response.



**Figure S2** Kaplan-Meier curves. (A) The therapeutic outcomes after recurrence stratified by with (Red) and without (Black) *EGFR* or *ALK*. (B) those stratified by with (Red) and without (Black) radiation therapy before immune checkpoint inhibitors. *EGFR*: Epidermal growth factor receptor, and *ALK*, Anaplastic lymphoma kinase. (C) those stratified by DCR (Red) and no DCR (Black). The  $P < 0.05$  means a significance.