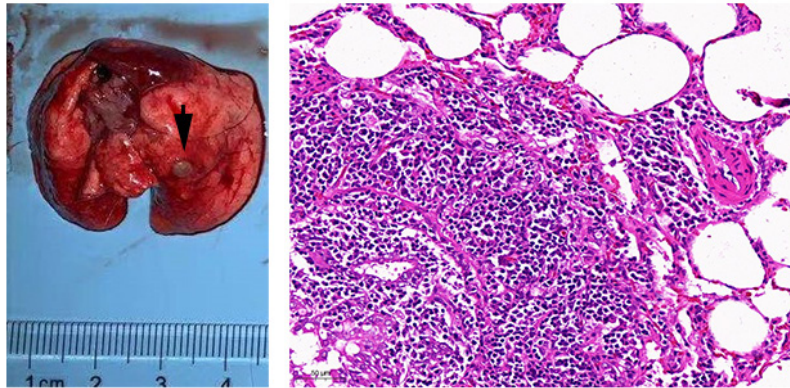


A



B

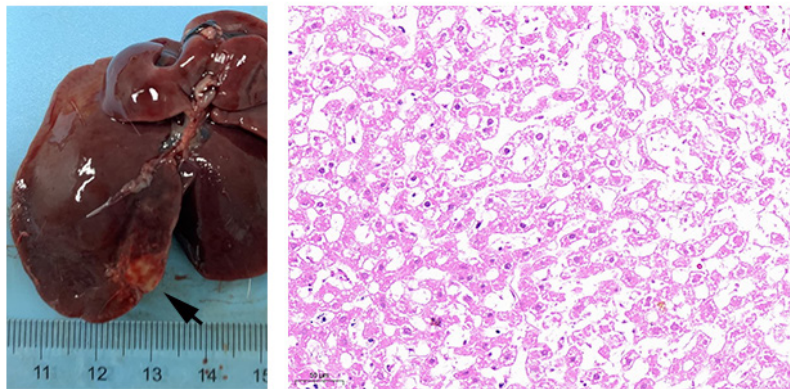


Figure S1 Metastasis was not found during the experiment, although one case of inflammation in the lung tissue and one regional necrosis in the liver were observed. Gross appearance and hematoxylin-eosin staining ($\times 200$) of lung (A) and liver (B).

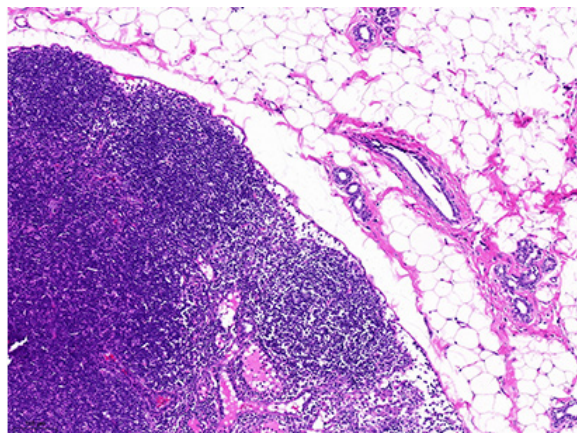


Figure S2 Lymph node without tumor observed in the intraductal (i.duc) group (HE staining, $\times 200$).